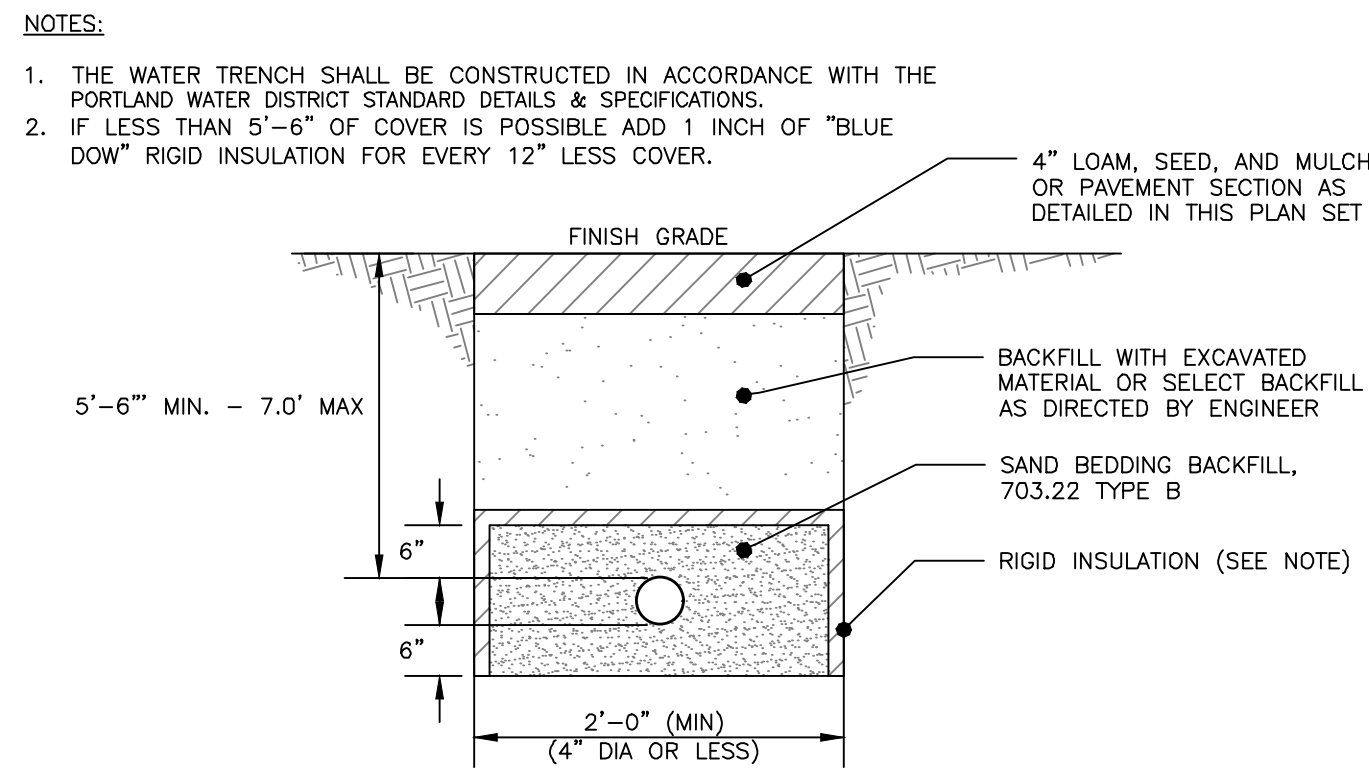
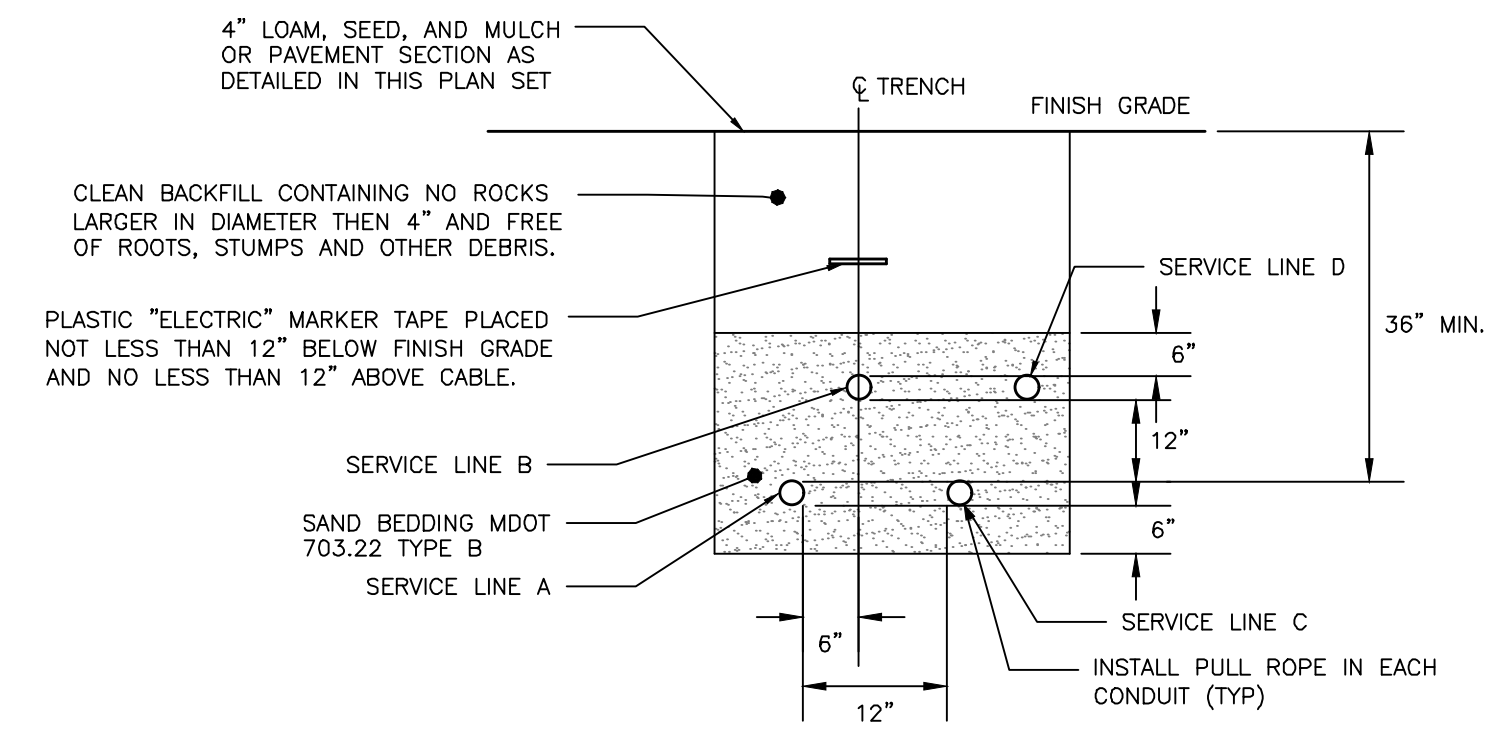


**VALVE BOX & COVER**  
NOT TO SCALE



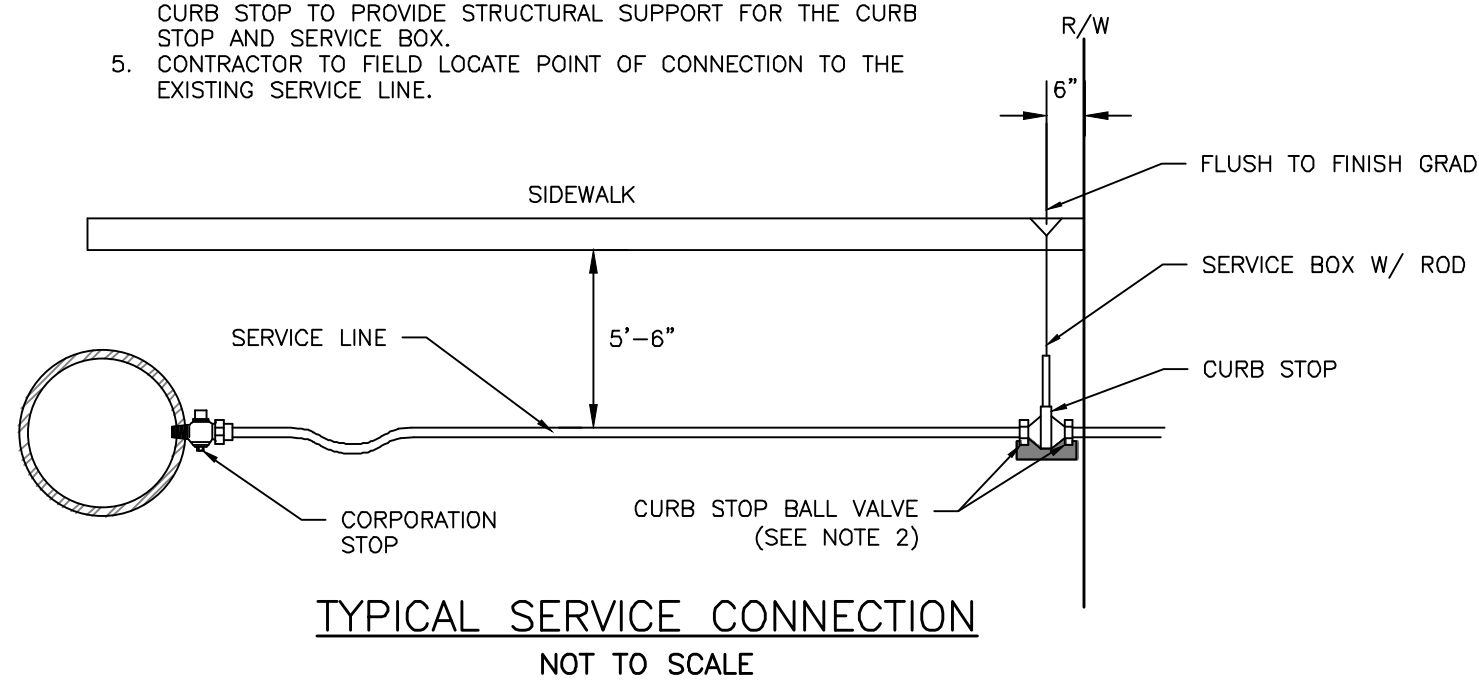
**WATER SERVICE TRENCH SECTION DETAIL**  
NOT TO SCALE



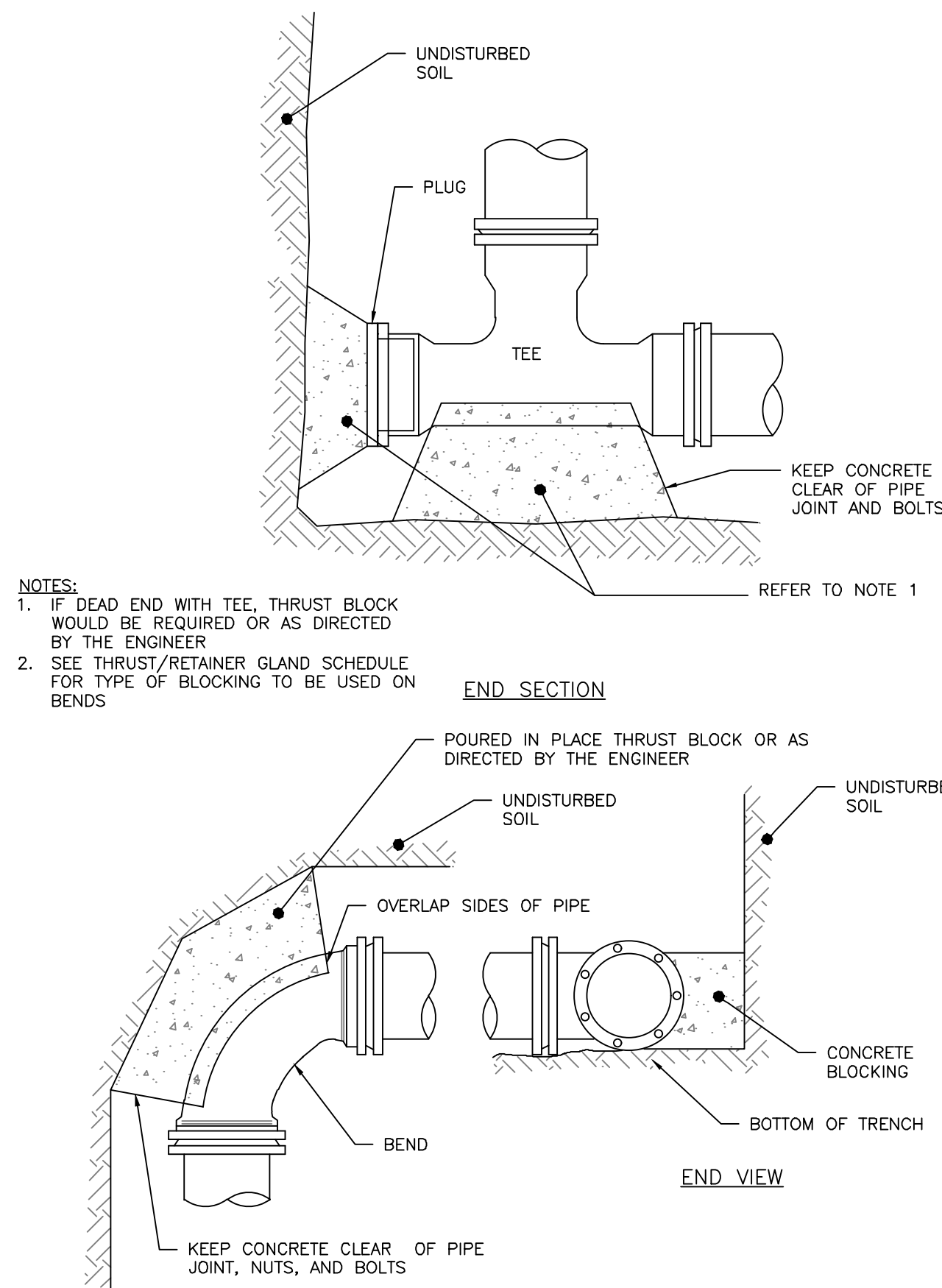
SERVICE	CONDUIT SIZE	CONDUIT TYPE		REMARKS
		GRASS AND PAVED AREAS	UTILITY	
A	2-5"	SCHEDULE 40 PVC ELECTRICAL GRADE	PRIMARY POWER	SEE NOTE 1
B	2-4"	SCHEDULE 40 PVC	COMMUNICATION	-
C	2-4"	SCHEDULE 40 PVC ELECTRICAL GRADE	SPARE	IF REQUIRED
D	2-4"	SCHEDULE 40 PVC	CABLE	-

- NOTES:  
1. ONE CONDUIT CAPPED FOR SPARE. PROVIDE GALVANIZED STEEL LONG SWEEP AT RISER POLE AND EXTEND GALVANIZED CONDUIT TO 10" ABOVE GRADE AT POLE WITH STAND-OFF BRACKETS.  
2. MINIMUM SEPARATION OF 24 INCHES BETWEEN PRIMARY CABLE/CONDUIT AND GAS LINES SHALL BE MAINTAINED.

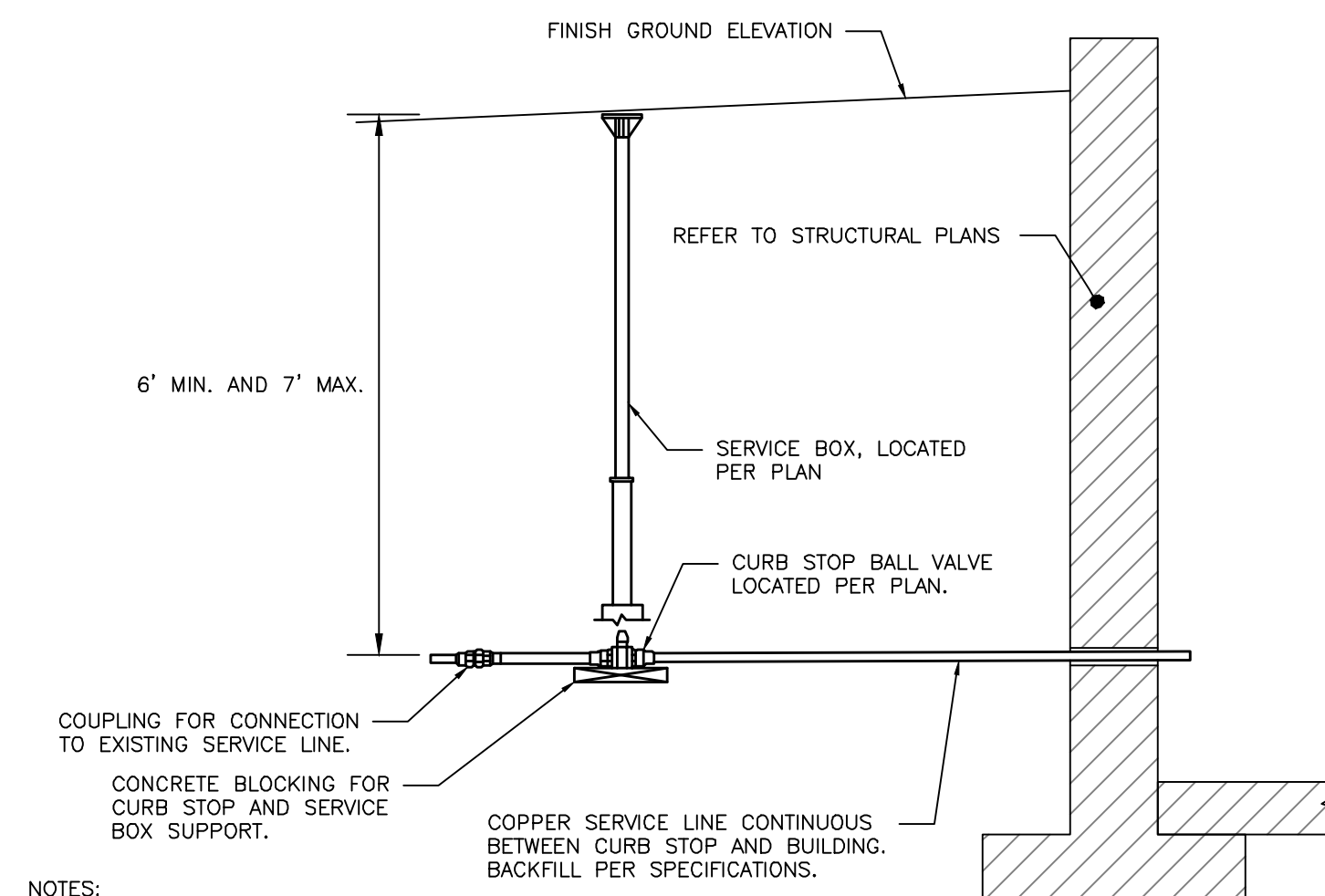
**UTILITY TRENCH: PRIMARY AND SECONDARY POWER, TELEPHONE, AND CABLE**  
NOT TO SCALE



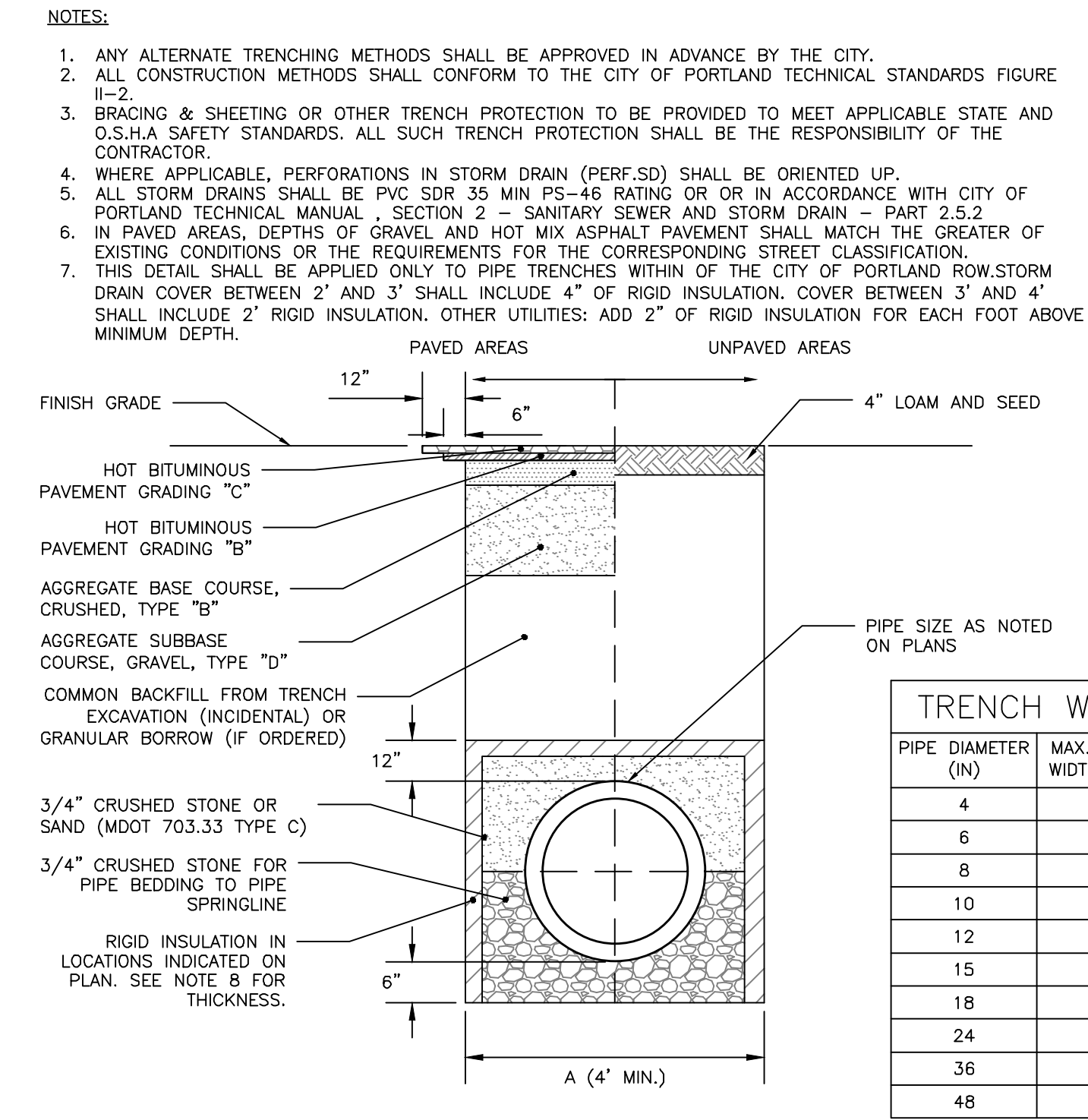
**TYPICAL SERVICE CONNECTION**  
NOT TO SCALE



**THRUST BLOCKING: REGULAR BEND**  
NOT TO SCALE



**SERVICE INSTALLATION DETAIL**  
NOT TO SCALE



**CITY OF PORTLAND TYPICAL PIPE TRENCH DETAIL**  
NOT TO SCALE

PERMIT LEVEL  
NOT ISSUED FOR  
CONSTRUCTION

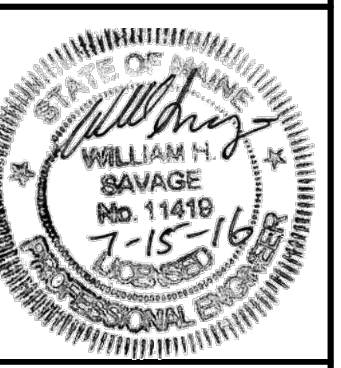
ISSUED FOR	BY
FINAL APPLICATION	WHS
BUILDING PERMIT	WHS
	7/15/16
	7/15/16

UTILITY DETAILS  
THE BLACK BOX AT 93 WASHINGTON  
COTTON STREET HOLDINGS, LLC  
75 WASHINGTON AVE SUITE 2H PORTLAND, ME 04101

ACORN ENGINEERS, INC.  
158 BANGOR ST. PORTLAND, MAINE 04102  
(207) 775-2655

EN INEER INC

FILE: 1073\_CIVIL  
JN: 1073  
SCALE: NTS  
DESIGNED BY: WHS  
DRAWN BY: SUL  
CHECKED BY: WHS



DRAWING NO.  
**C-41**