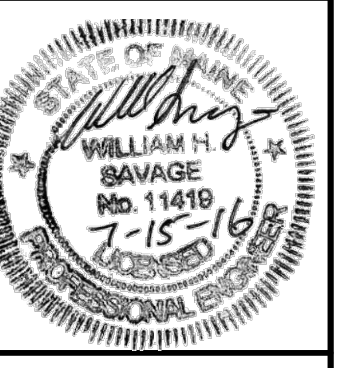


ISSUED FOR	BY
FINAL APPLICATION	WHS
BUILDING PERMIT	WHS
	DATE
	7/15/16
	7/15/16
	7/15/16

DRAWING NAME: **SITE DETAILS**  
 PROJECT NAME: **THE BLACK BOX AT 93 WASHINGTON**  
 CLIENT: **COTTON STREET HOLDINGS, LLC**  
 75 WASHINGTON AVE SUITE 2H PORTLAND, ME 04101

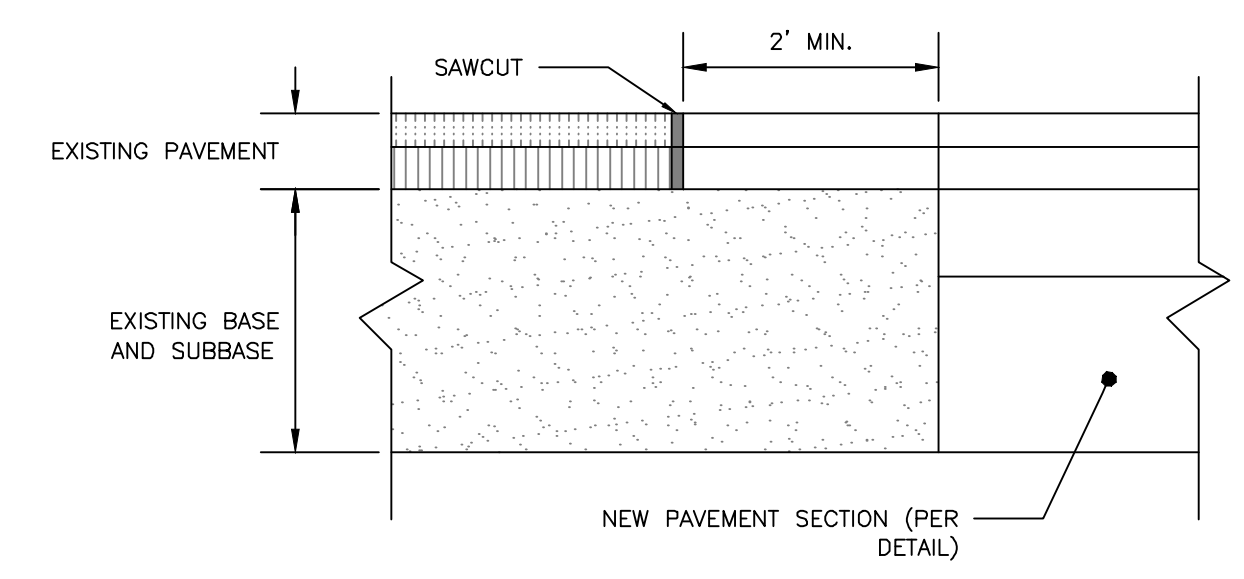
ACCOR EN INEER INC  
 158 BANGOR ST PORTLAND MAINE 04102  
 (207) 775-2655  
 I am a duly licensed Professional Engineer in the State of Maine, authorized to seal and sign drawings prepared by me or under my direct supervision and to take responsibility for the engineering work shown on these drawings.

FILE: 1073\_CIVIL  
 JN: 1073  
 SCALE: NTS  
 DESIGNED BY: WHS  
 DRAWN BY: SUL  
 CHECKED BY: WHS

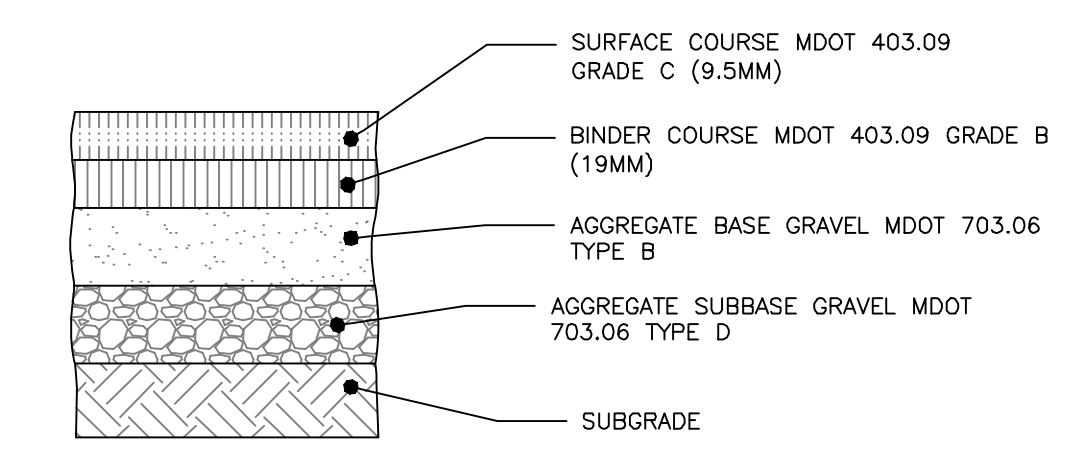


DRAWING NO.  
**C-40**

- NOTES:
- SAWCUT EXISTING PAVEMENT AND REMOVE 2' STRIP OF EXISTING PAVEMENT. APPLY BITUMINOUS TACK COAT PRIOR TO PLACEMENT OF NEW BITUMINOUS PAVEMENT.
  - THE NEW PAVEMENT SECTION SHALL MEET THE CITY OF PORTLAND ARTERIAL BITUMINOUS PAVEMENT SECTION DETAIL AT A MINIMUM OR THE THE EXISTING PAVEMENT AND AGGREGATE BASE AND SUBBASE DEPTH WHICHEVER IS GREATER.



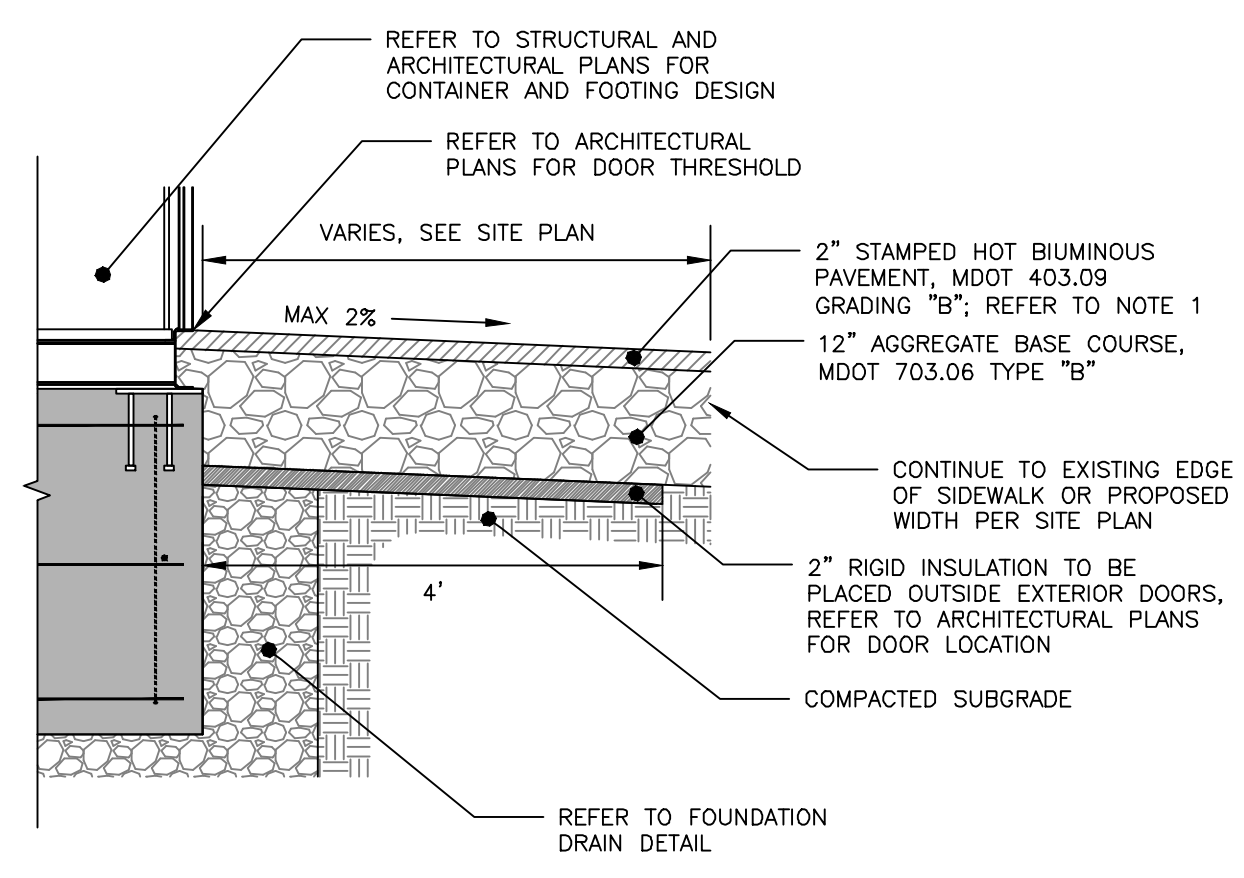
**PAVEMENT SAWCUT DETAIL**  
NOT TO SCALE



- NOTES:
- COMPACT SUBGRADE TO 95% MAXIMUM DRY DENSITY IN ACCORDANCE WITH ASTM D-1557
  - LOCAL BITUMINOUS PAVEMENT PROFILE APPLIES TO THE SITE PAVEMENT & MARION STREET

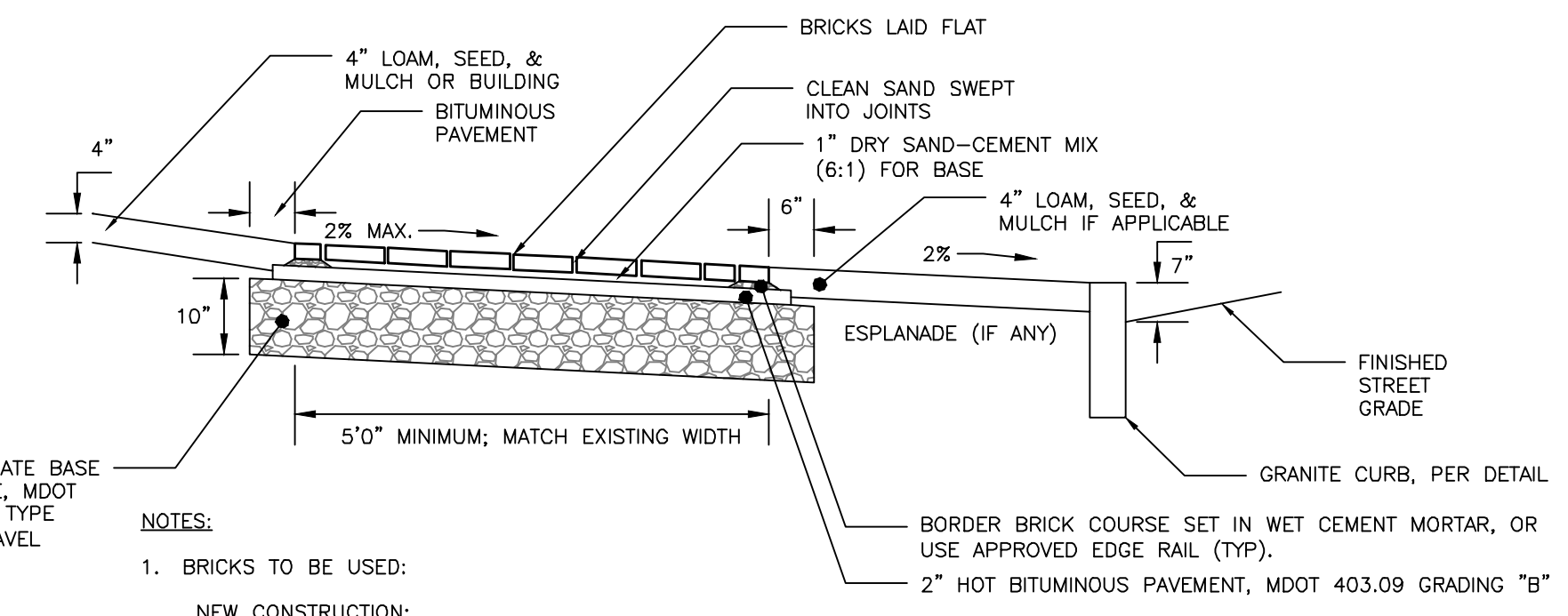
STANDARD	THICKNESS OF LAYERS	LAYERS
1-1/2"		SURFACE COURSE MDOT 403.09 GRADE C (9.5mm)
2"		BINDER COURSE MDOT 403.09 GRADE B (19mm)
3"		AGGREGATE BASE GRAVEL MDOT 703.06 TYPE B
15"		AGGREGATE SUBBASE GRAVEL MDOT 703.06 TYPE D

**LOCAL BITUMINOUS PAVEMENT PROFILE**  
NOT TO SCALE



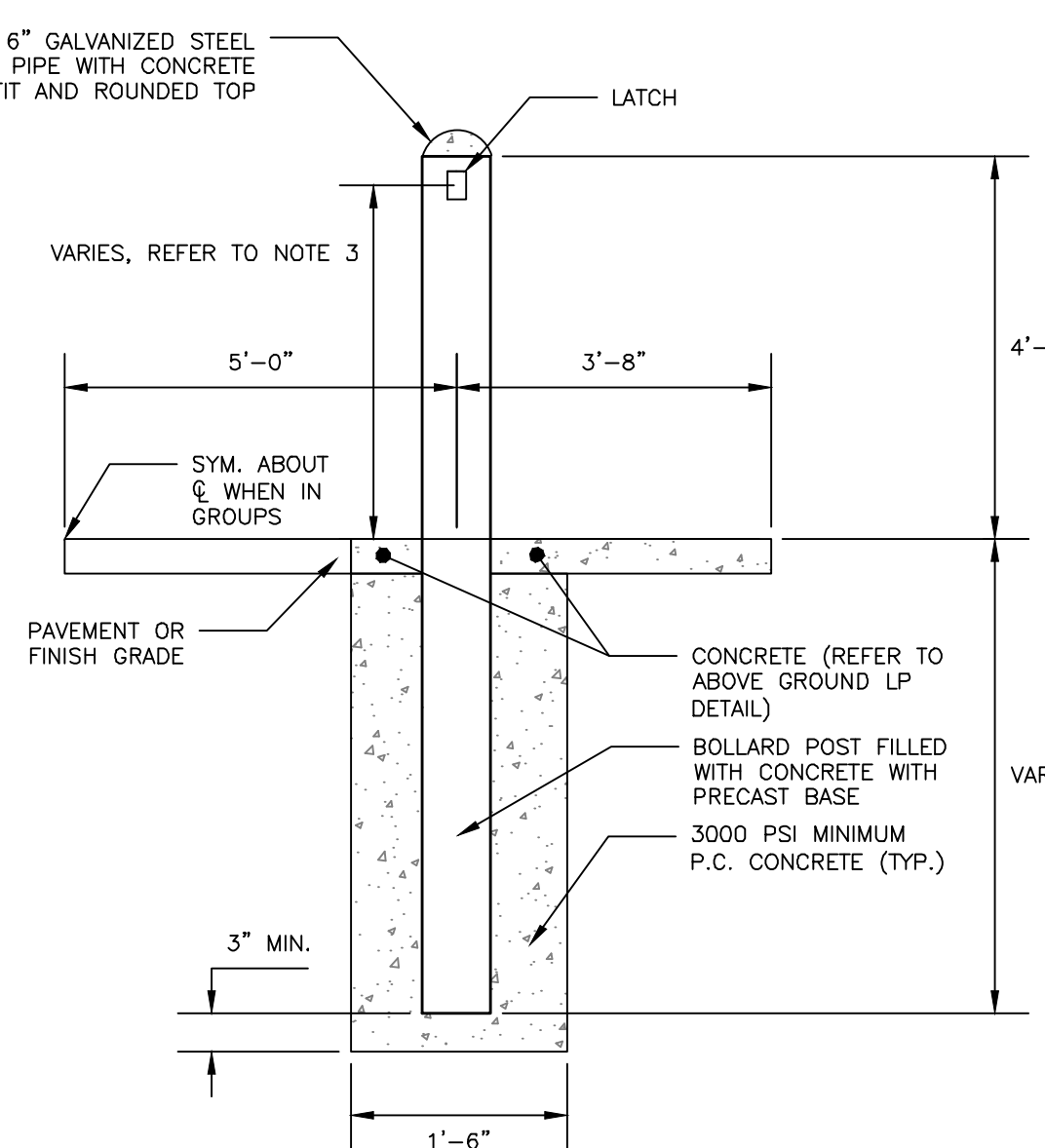
- NOTES:
- PAVEMENT TO BE STAMPED IN ACCORDANCE WITH MANUFACTURER'S INSTALLATION PROCEDURES AND SPECIFICATIONS.
  - PAVEMENT NOT DESIGNED FOR H-20 WHEEL LOADING.

**STAMPED PAVEMENT DETAIL**  
NOT TO SCALE



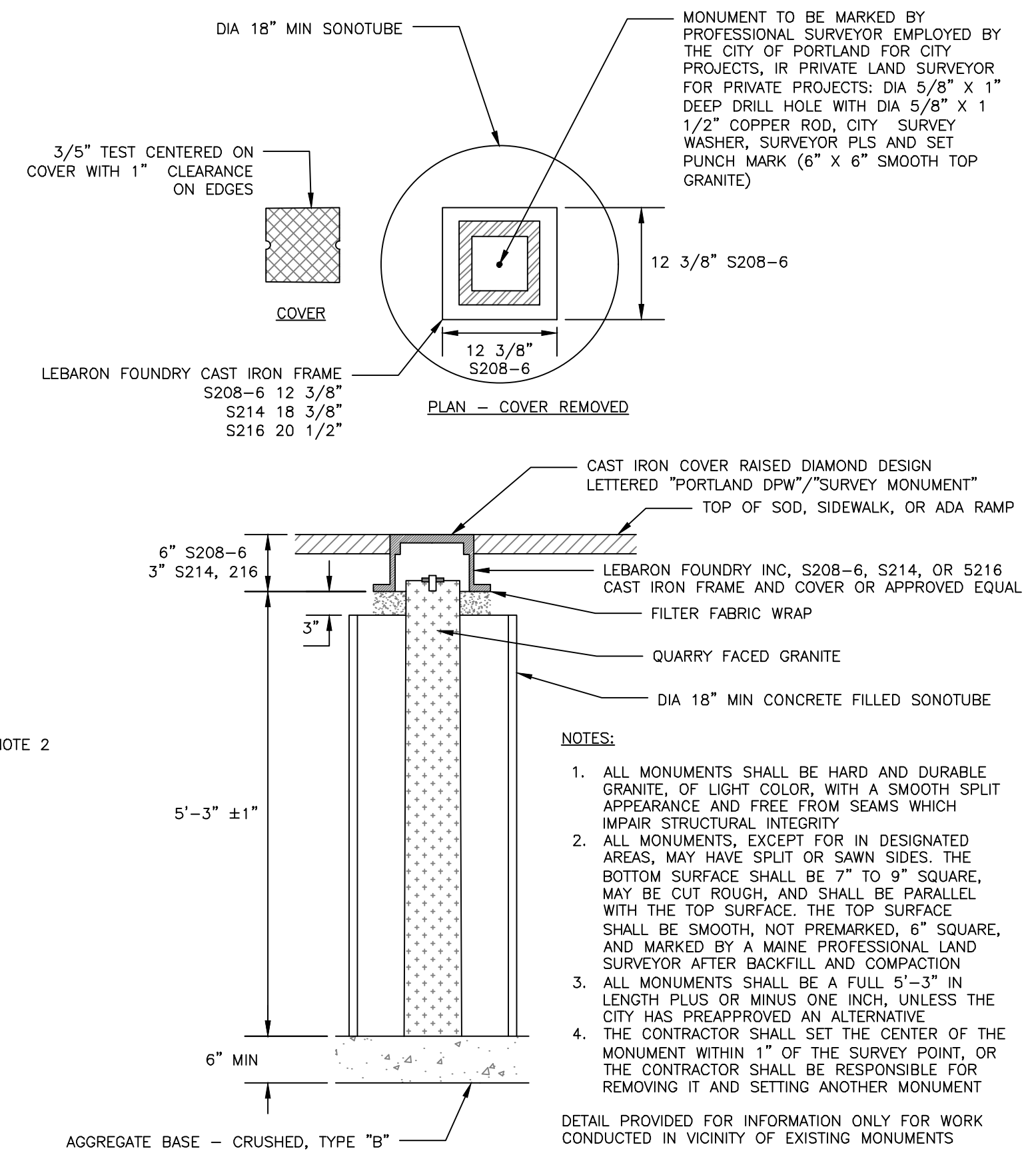
- NOTES:
- BRICKS TO BE USED:  
**NEW CONSTRUCTION:**  
 4"x8" PINE HALL PATHWAY PAVER BRICK; MFG. BY PINE HALL BRICK CO., MADISON, NORTH CAROLINA. LACHANCE ITEM #193623; PINE HALL PATHWAY PAVER BRICK.  
**EXISTING:**  
 2" HOT BITUMINOUS PAVEMENT, MDOT 403.09 GRADING "B"
  - INSTALL BRICK FLUSH UP TO BUILDING, PAVEMENT, STAIRS, CONCRETE SURFACES, CURB OR LANDSCAPED AREAS.

**BRICK SIDEWALK WITH BITUMINOUS BASE DETAIL**  
NOT TO SCALE



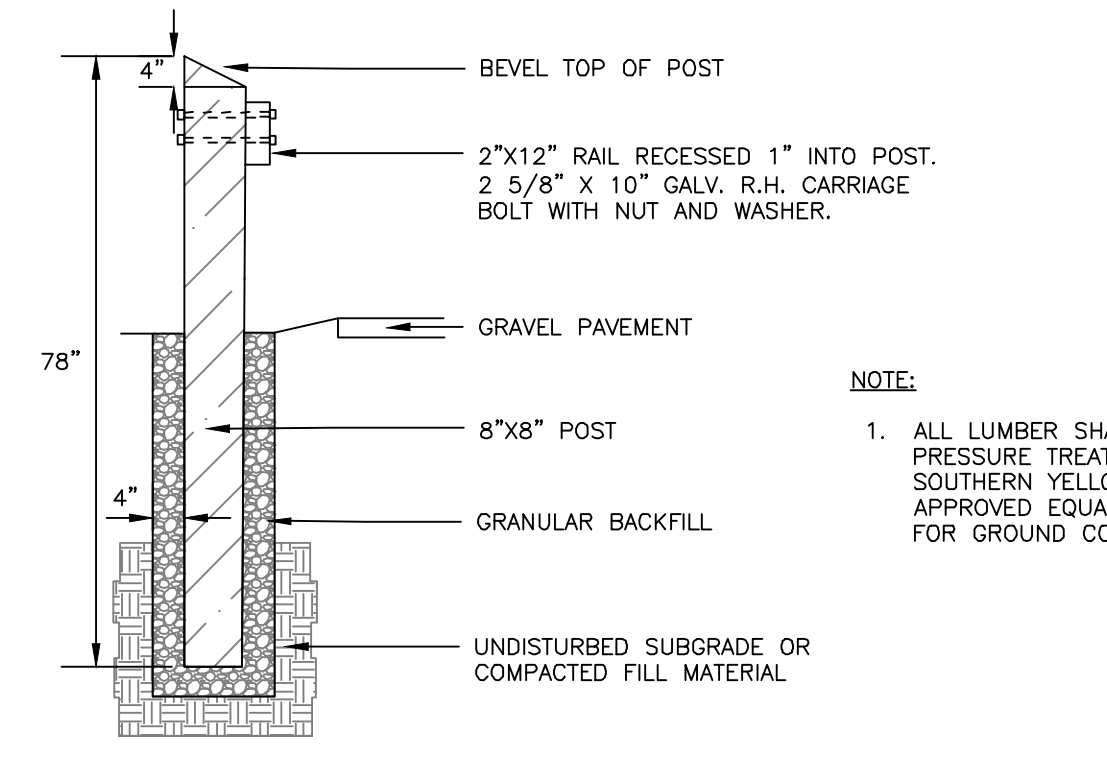
- NOTES:
- ALL PIPES SHALL BE PAINTED IN TRAFFIC YELLOW.
  - BOLLARDS TO BE BURIED TO FROST DEPTH.
  - LATCH TO BE COMPATIBLE WITH BIFOLD-DOOR SYSTEM AND INSTALLED TO THE AS-BUILT HEIGHT CONDITIONS.

**PIPE BOLLARD**  
NOT TO SCALE



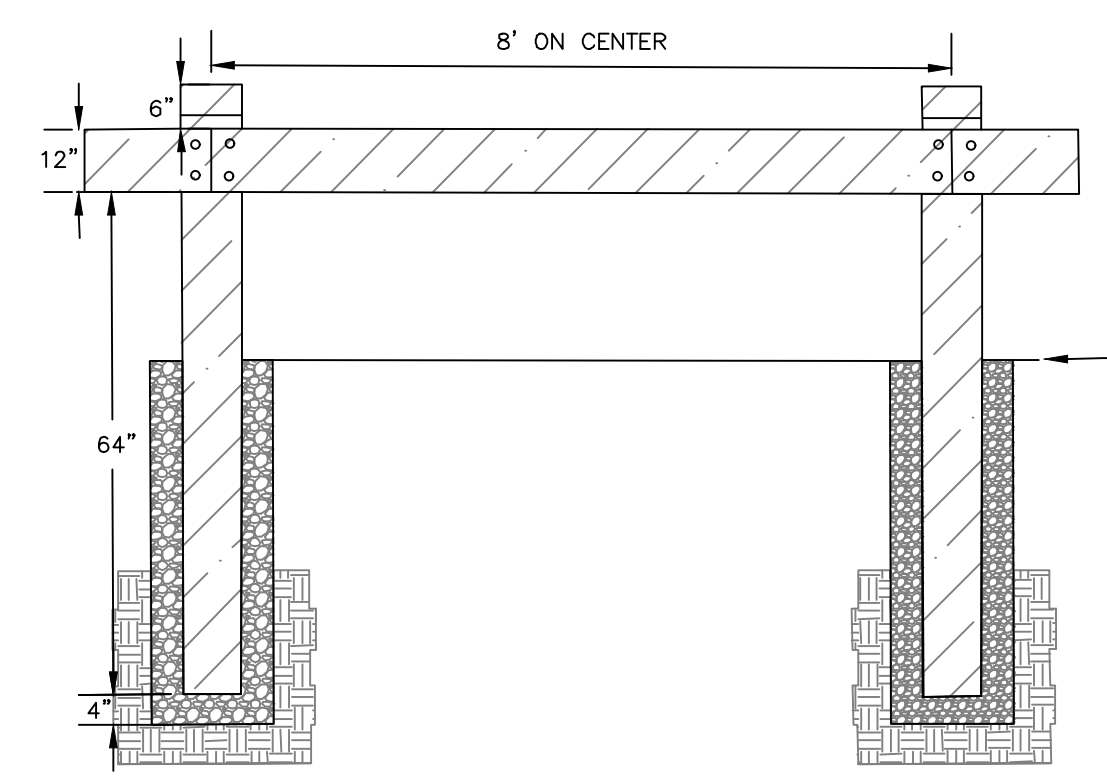
- NOTES:
- ALL MONUMENTS SHALL BE HARD AND DURABLE GRANITE, OF LIGHT COLOR, WITH A SMOOTH SPLIT APPEARANCE AND FREE FROM SEAMS WHICH IMPAIR STRUCTURAL INTEGRITY
  - ALL MONUMENTS, EXCEPT FOR IN DESIGNATED AREAS, MAY HAVE SPLIT OR SAWN SIDES. THE BOTTOM SURFACE SHALL BE 7" TO 9" SQUARE, MAY BE CUT ROUGH, AND SHALL BE PARALLEL WITH THE TOP SURFACE. THE TOP SURFACE SHALL BE SMOOTH, NOT PREMARKED, 6" SQUARE, AND MARKED BY A MAINE PROFESSIONAL LAND SURVEYOR AFTER BACKFILL AND COMPACTION
  - ALL MONUMENTS SHALL BE A FULL 5'-3" IN LENGTH PLUS OR MINUS ONE INCH, UNLESS THE CITY HAS PREAPPROVED AN ALTERNATIVE
  - THE CONTRACTOR SHALL SET THE CENTER OF THE MONUMENT WITHIN 1" OF THE SURVEY POINT, OR THE CONTRACTOR SHALL BE RESPONSIBLE FOR REMOVING IT AND SETTING ANOTHER MONUMENT

**GRANITE STREET MONUMENT**  
NOT TO SCALE



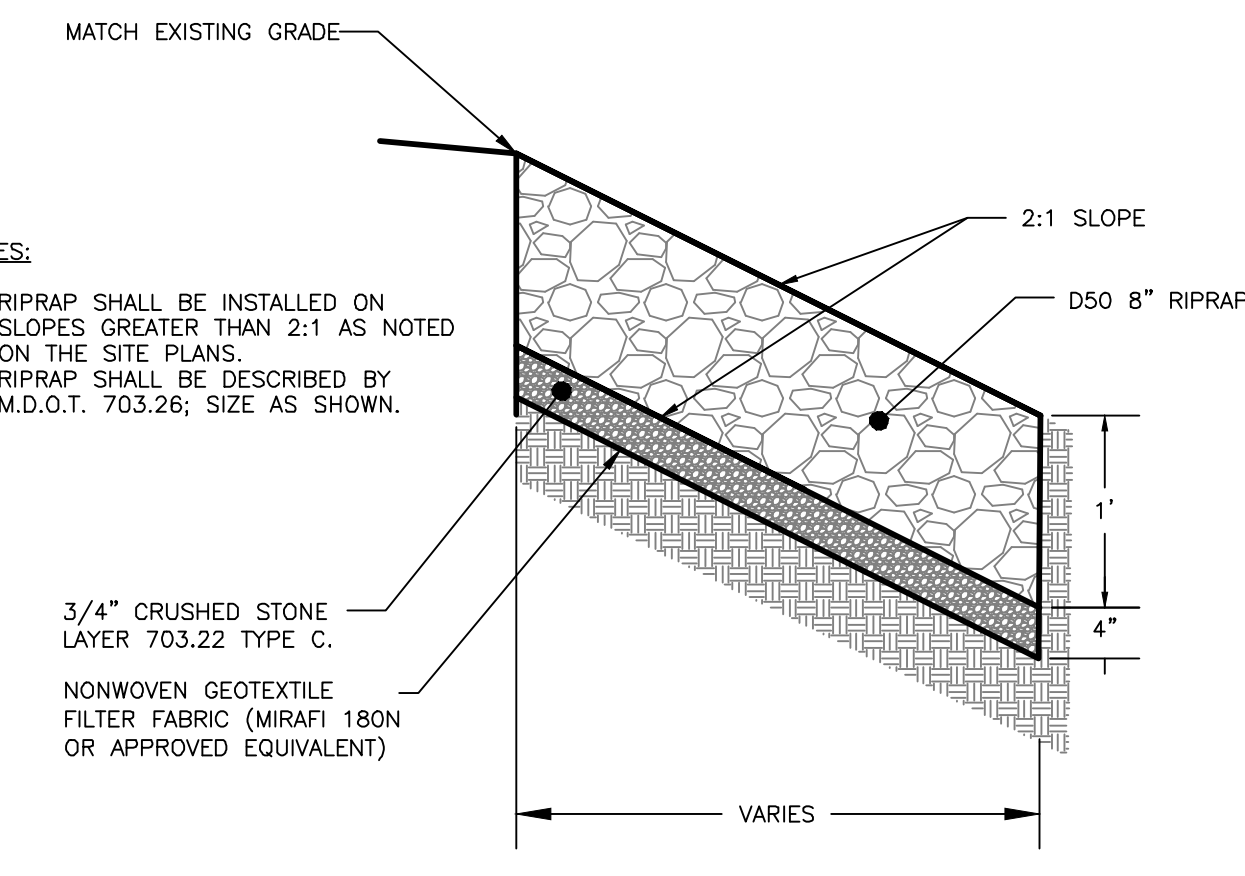
- NOTE:
- ALL LUMBER SHALL BE PRESSURE TREATED SOUTHERN YELLOW PINE OR APPROVED EQUAL RATED FOR GROUND CONTACT

**SIDE ELEVATION**



**FRONT ELEVATION**

**WOODEN GUARDRAIL DETAIL**  
NOT TO SCALE



- NOTES:
- RIPRAP SHALL BE INSTALLED ON SLOPES GREATER THAN 2:1 AS NOTED ON THE SITE PLANS
  - RIPRAP SHALL BE DESCRIBED BY M.D.O.T. 703.26; SIZE AS SHOWN.

**RIPRAP CROSS-SECTION**  
NOT TO SCALE

PERMIT LEVEL  
 NOT ISSUED FOR  
 CONSTRUCTION