

6" SAN. PIPING TO 5 FT OUTSIDE BUILDING WALL. SEE SITE PLANS FOR CONTINUATION.

RUN TIGHT TO CEILING, PITCH AT 1/4"/FT.

**GENERAL PLUMBING NOTES:**

1. ALL WASTE AND VENT PIPING LOCATED BELOW THE FLOOR SHALL BE INSTALLED ON THE WARM SIDE OF THE INSULATION.

**KEYED PLUMBING NOTES:**

1. 1" CW - DROP AND PROVIDE MASTER DOMESTIC WATER SHUT-OFF VALVE TO APARTMENT.

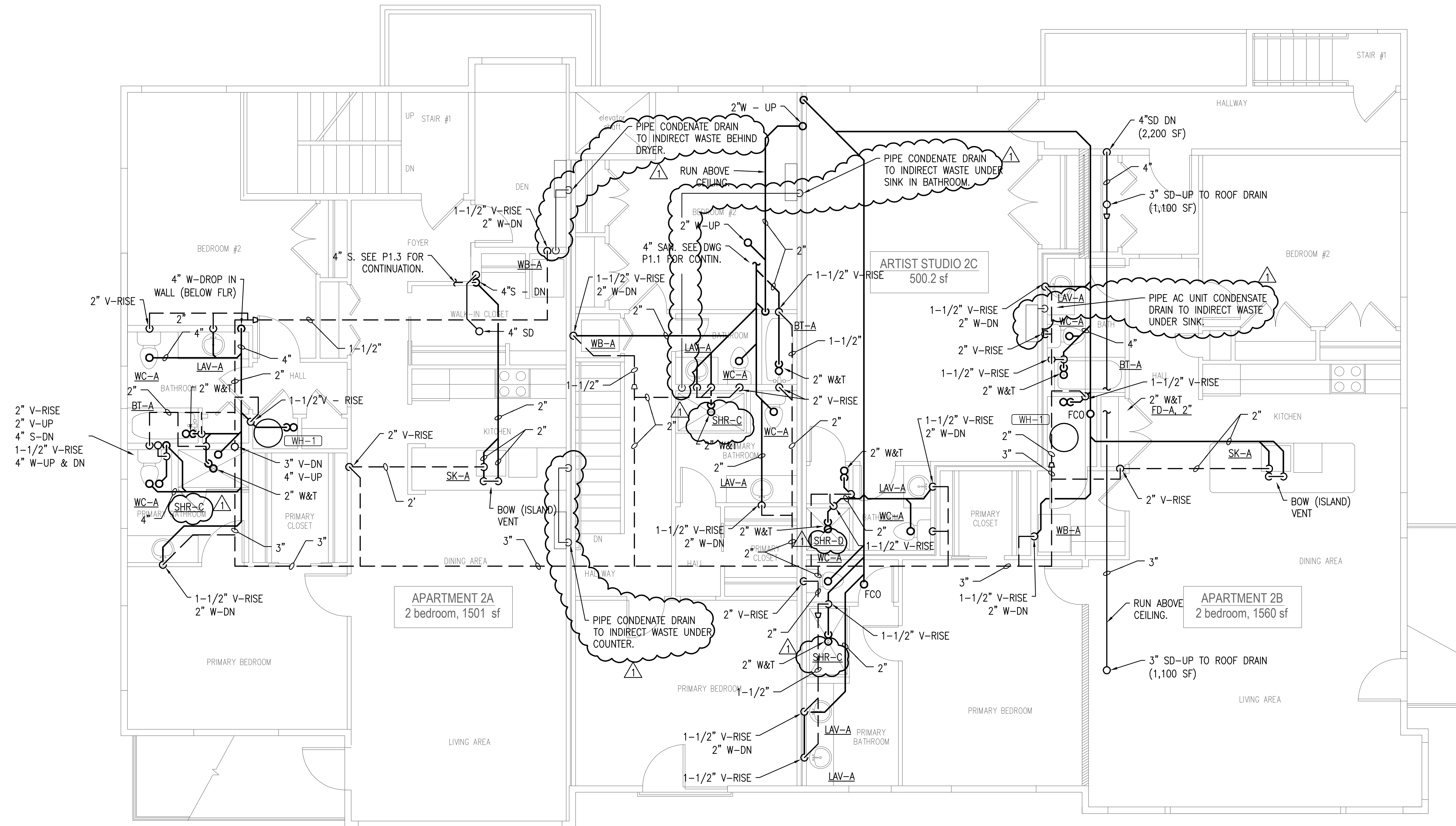
2. 3/4" HW AND 1/2" CW. DROP IN WALL AND ROUTE WITHIN CABINETS. CONNECT 1/2" CW AND 1/2" HW EACH TO SINK. CONNECT 1/2" HW TO DISHWASHER.

3. PIPE CONDENSATE DRAIN FROM FAN COIL UNIT TO INDIRECT WASTE UNDER CABINET.

**1 1st Floor Plumbing Plan**  
1/4" = 1'-0"



Prepared For: <b>New Day Farm LLC</b> Gorham Maine	Consultant: <b>VIRIDIS ENGINEERING</b> <small>20 Mechanics Street          Telephone: (207) 222-0044          www.viridisengineering.com</small>	Architect: <b>ARCHETYPE architects</b> <small>48 Union Wharf Portland, Maine 04101          (207) 772-6022 Fax (207) 772-4056</small>	Project: <b>Sheridan Street Townhouses</b> <small>152 Sheridan Street          Portland Maine 04101</small>	Revisions: <table border="1" style="width: 100%; border-collapse: collapse;"> <tr> <td style="width: 5%;"> </td> <td style="width: 15%;"> </td> <td style="width: 15%;"> </td> <td style="width: 15%;"> </td> <td style="width: 15%;"> </td> <td style="width: 15%;"> </td> </tr> <tr> <td> </td> <td> </td> <td> </td> <td> </td> <td> </td> <td> </td> </tr> </table>													Scale: 1/4" = 1'-0" Date: February 28, 2014 <b>FIRST FLOOR DRAINAGE, WASTE AND VENT PIPING PLAN</b> 1. ADDENDUM #1
<p style="font-size: 2em; margin: 0;"><b>p1.1</b></p>																	



1 2nd Floor Plan (gross floor area: 4632 s.f.)  
1/4" = 1'-0"



Prepared For:  
**New Day Farm LLC**  
Gorham Maine

Consultant:  
**VIRIDIS ENGINEERING**  
20 Mechanic Street  
Portland, ME 04101  
Telephone: (207) 222-0014  
www.viridisengineering.com

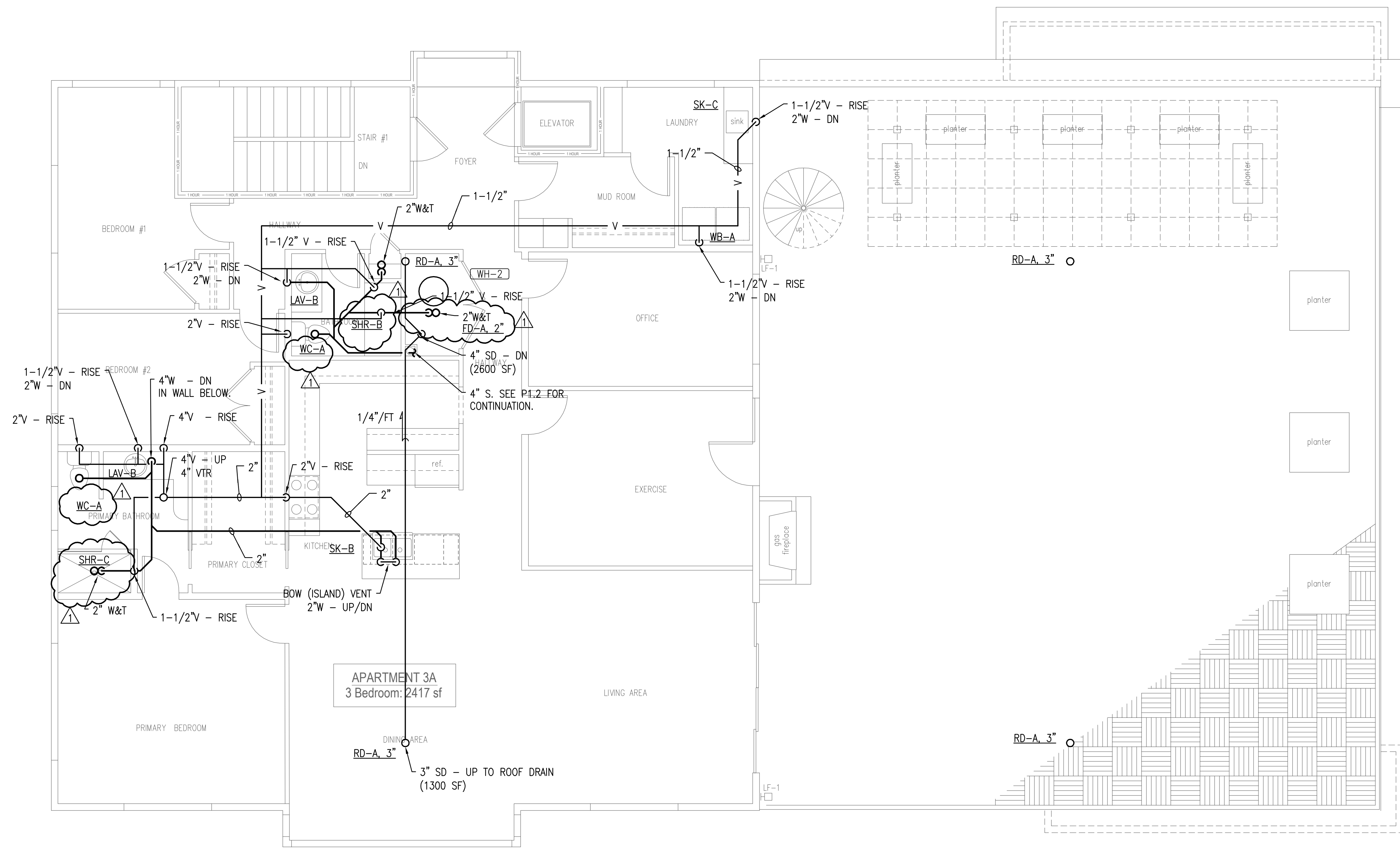
Architect:  
**ARCHETYPE architects**  
48 Union Wharf Portland, Maine 04101  
(207) 772-6022 Fax (207) 772-4056

Project:  
**Sheridan Street Townhouses**  
152 Sheridan Street  
Portland Maine 04101

Revisions:  
1. ADDENDUM #1

Date: February 28, 2014  
Scale: 1/4" = 1'-0"  
**SECOND FLOOR DRAINAGE, WASTE AND VENT PIPING PLAN**

**p1.2**

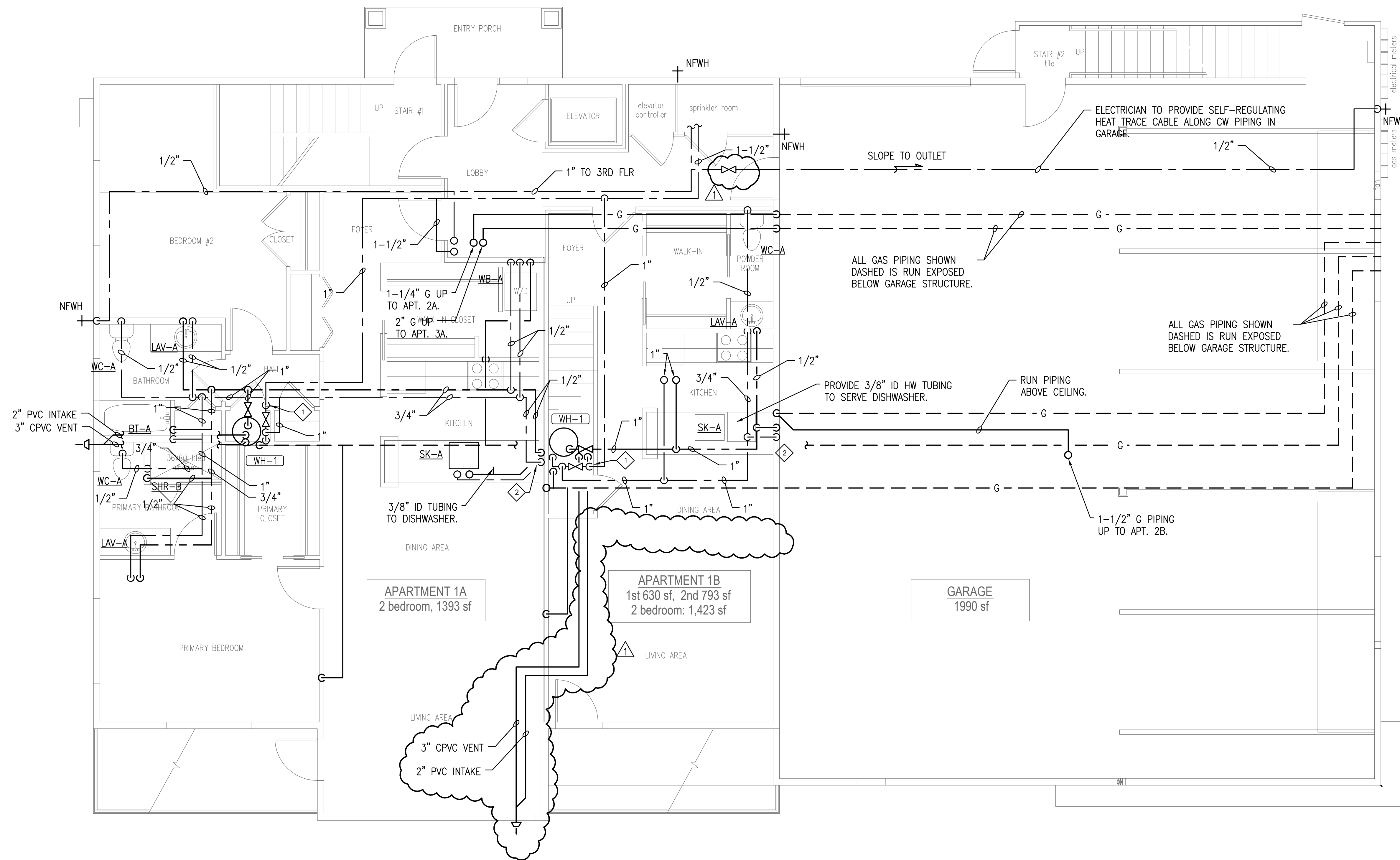


1 3rd Floor Plan (gross floor area: 2481 s.f.)  
1/4" = 1'-0"



project north

Date: February 28, 2014	Scale: 1/4" = 1'-0"	<b>THIRD FLOOR</b> <b>DRAINAGE, WASTE AND</b> <b>VENT PIPING PLAN</b>	Revisions: 1. ADDENDUM #1	Project: <b>Sheridan Street</b> <b>Townhouses</b> 152 Sheridan Street Portland Maine 04101	Architect: <b>ARCHETYPE</b> <b>architects</b> 48 Union Wharf Portland, Maine 04101 (207) 772-6022 Fax (207) 772-4056	Consultant: <b>VIRIDIS</b> <b>ENGINEERING</b> 20 Mechanic Street Portland, ME 04101 Telephone: (207) 222-0044 www.viridisengineering.com	Prepared For: <b>New Day Farm LLC</b> Gorham Maine
				<p style="text-align: center; font-size: 2em; font-weight: bold;">p1.3</p>			



**KEYED PLUMBING NOTES:**

- 1 1" CW - DROP AND PROVIDE MASTER DOMESTIC WATER SHUT-OFF VALVE TO APARTMENT.
- 2 3/4" HW AND 1/2" CW. DROP IN WALL AND ROUTE WITHIN CABINETRY. CONNECT 1/2" CW AND 1/2" HW EACH TO SINK. CONNECT 1/2" HW TO DISHWASHER.



Prepared For:  
**New Day Farm LLC**  
Gorham Maine

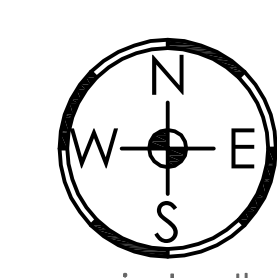
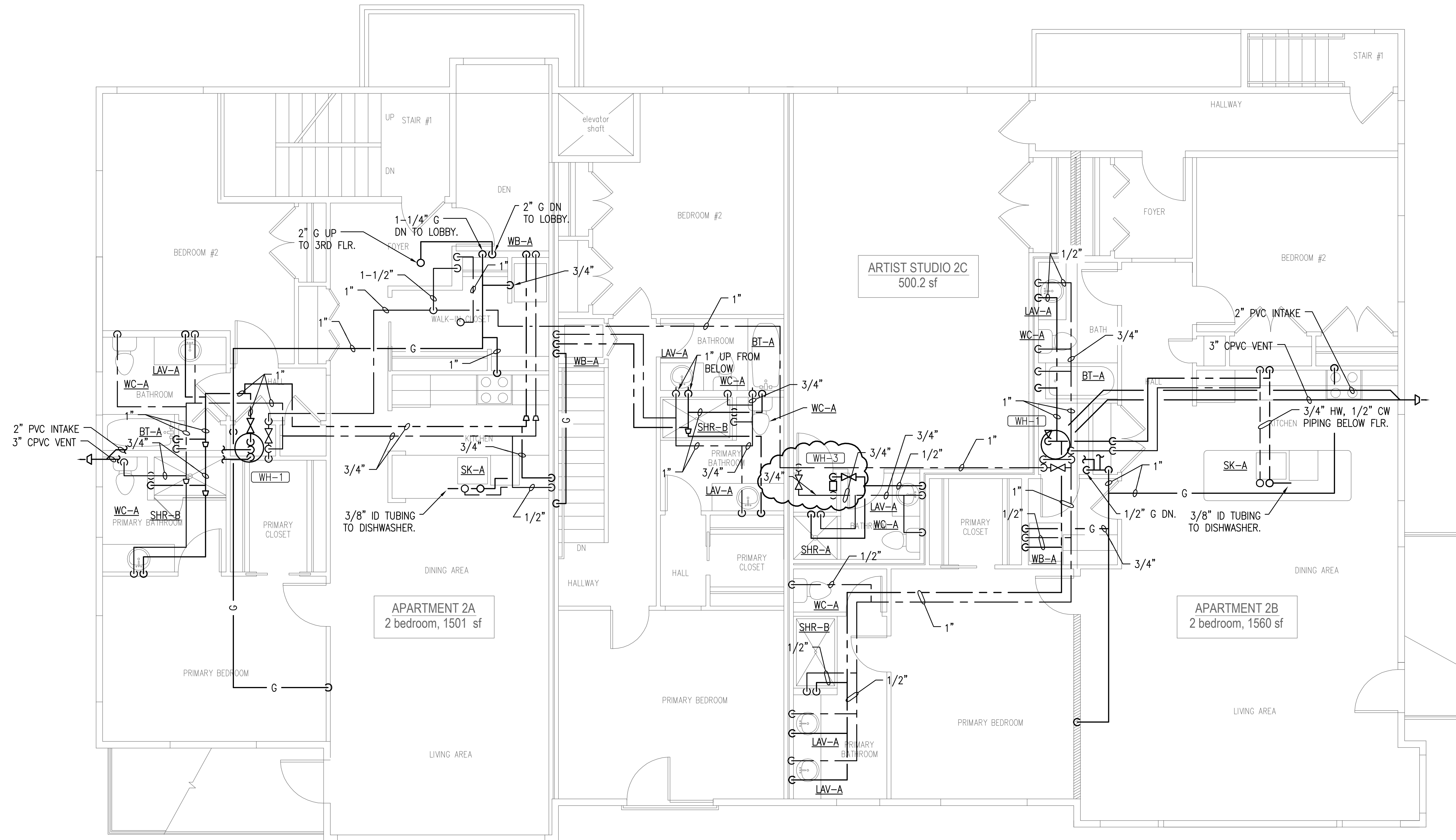
Consultant:  
**VIRIDIS ENGINEERING**  
20 Mechanic Street  
Portland, ME 04101  
Telephone: (207) 222-0014  
www.viridisengineering.com

Architect:  
**ARCHETYPE architects**  
48 Union Wharf Portland, Maine 04101  
(207) 772-6022 Fax (207) 772-4056

Project:  
**Sheridan Street Townhouses**  
152 Sheridan Street  
Portland Maine 04101

Revisions:  
1. ADDENDUM #1

Date: February 28, 2014  
Scale: 1/4" = 1'-0"  
**FIRST FLOOR PLUMBING SUPPLY PIPING PLAN**



project north

Date: February 28, 2014	Scale: 1/4" = 1'-0"	<b>SECOND FLOOR PLUMBING SUPPLY PIPING PLAN</b>	Revisions:  1. ADDENDUM #1	Project: <b>Sheridan Street Townhouses</b> 152 Sheridan Street Portland Maine 04101	Architect: <b>ARCHETYPE architects</b> 48 Union Wharf Portland, Maine 04101 (207) 772-6022 Fax (207) 772-4056	Consultant: <b>VIRIDIS ENGINEERING</b> 20 Mechanic Street Telephone: (207) 222-0044 www.viridisengineering.com	Prepared For: <b>New Day Farm LLC</b> Gorham Maine
				p2.2			

### DOMESTIC WATER HEATER SCHEDULE

TAG	FUEL	INPUT MBH	RECOVERY RATE 100" RISE (GPH)	STORAGE TANK SIZE/GAL.	ELECTRICAL DATA		FLUE CONN. (in.)	OPERATING WEIGHT (lbs.)	TYPICAL UNIT MFR. & MODEL NO.	NOTES
					HP	VOLT/Ø				
WH-1	NAT. GAS	76	92	50	6KW	120/1	3"	700	AO SMITH GPHE-50	1,2,3
WH-2	NAT. GAS	100	129	50	6KW	120/1	3"	700	AO SMITH GPHE-50	1,2,3
WH-3	ELECTRIC	9.6 kW	1.0 GPM INSTANTANEOUS	TANKLESS	9600W	240/1	-	-	CHRONOMITE M-40	1,2

NOTES: 1. PROVIDE ONE EXPANSION TANK ON CW INLET, AMTROL #ST-5 OR EQUAL.  
 2. SET HW OUTLET TEMPERATURE AT 120F.  
 3. PROVIDE CPVC PIPE FOR EXHAUST. PVC PIPE FOR COMBUSTION AIR AND CONCENTRIC VENT TERMINATION PIPE IN ACCORDANCE WITH MANUFACTURER'S RECOMMENDATIONS.  
 4. HOT WATER TEMPERATURE RISE IS 65F AT 1 GPM FLOW.

### PLUMBING FIXTURE CONNECTION SCHEDULE

FIXTURE	CW	HW	WASTE	VENT	NOTES
TANK TYPE WATER CLOSET	1/2"	-	4"	2"	
LAVATORY	1/2"	1/2"	1-1/2"	1-1/2"	
KITCHEN SINK	1/2"	1/2"	1-1/2"	1-1/2"	
LAUNDRY SINK	1/2"	1/2"	1-1/2"	1-1/2"	
CLOTHES WASHER	1/2"	1/2"	1-1/2"	1-1/2"	
DISHWASHER	-	1/2"	5/8" FLEX TUBING	AIR GAP FITTING	
SHOWER	1/2"	1/2"	1-1/2"	1-1/2"	

NOTES:

### PLUMBING SPECIALTIES SCHEDULE

TAG	APPLICATION	TYPICAL UNIT MFG & MODEL NO.	DESCRIPTION	NOTES
WB-A	WASHING MACHINE WALL BOX	IPS-GUY GRAY #BBED200TS	GALVANIZED STEEL, RECESSED LAUNDRY BOX WITH DOMESTIC HW AND CW VALVES, DRAIN CONNECTION.	
WH-A	EXTERIOR WALL HYDRANT	ZURN #Z1315-PB-VB-WC	FREEZE RESISTANT, POLISHED BRONZE PLATE, ADAPTER BACKFLOW PREVENTER, WALL CLAMP, 3/4" CONNECTION.	
HB-A	INTERIOR HOSE BIBB UNFINISHED SPACES	CHICAGO #998	INTEGRAL VACUUM BREAKER, LOOSEKEY, ROUGH CHROME FINISH, 3/4" CONNECTION.	

NOTES:

### PLUMBING FIXTURE SCHEDULE

TAG	DESCRIPTION	FIXTURE	FAUCET/DRAIN	TRIM	SUPPORT	NOTES
WC-A	WALL MOUNTED WATER CLOSET	KOHLER #K-3754 KELSTON, VITREOUS CHINA, ELONGATED BOWL, 1.6GPF	--	CHURCH #885N1SL ELONGATED MOLDED WOOD SEAT - WHITE	--	
LAV-A	COUNTER MOUNTED LAVATORY	PROVIDED BY COUNTERTOP SUPPLIER.	MOEN SINGLE HANDLE LAVATORY FAUCET. L4600 SERIES.	MCGUIRE ANGLE STOPS, P-TRAP, ESCUTCHEONS AND RISERS-CHROME PLATED	INTEGRAL	
LAV-B	COUNTER MOUNTED LAVATORY	PROVIDED BY COUNTERTOP SUPPLIER.	MOEN SINGLE HANDLE LAVATORY FAUCET. L4600 SERIES.	MCGUIRE ANGLE STOPS, P-TRAP, ESCUTCHEONS AND RISERS-CHROME PLATED	INTEGRAL	
SK-A	KITCHEN SINK	PROVIDED BY COUNTERTOP SUPPLIER.	MOEN CHATEAU MODEL #7430 SINGLE HANDLE W/ SPRAY ELKAY #LK335 DRAIN WITH REMOVABLE STRAINER BASKET	MCGUIRE ANGLE STOPS, P-TRAP, ESCUTCHEONS AND RISERS-CHROME PLATED	INTEGRAL	
SK-B	KITCHEN SINK	PROVIDED BY COUNTERTOP SUPPLIER.	MOEN CHATEAU MODEL #7430 SINGLE HANDLE W/ SPRAY ELKAY #LK335 DRAIN WITH REMOVABLE STRAINER BASKET	MCGUIRE ANGLE STOPS, P-TRAP, ESCUTCHEONS AND RISERS-CHROME PLATED	INTEGRAL	
SK-C	LAUNDRY SINK	PROVIDED BY COUNTERTOP SUPPLIER.	MOEN CHATEAU MODEL #7430 SINGLE HANDLE W/ SPRAY ELKAY #LK335 DRAIN WITH REMOVABLE STRAINER BASKET	MCGUIRE ANGLE STOPS, P-TRAP, ESCUTCHEONS AND RISERS-CHROME PLATED	INTEGRAL	
BT-A	BATHTUB/SHOWER UNIT	AMERICAN STANDARD ACRYLUX 60"x30" TUB W/ INTEGRAL APRON. MODEL NO. 6030Y1.	SYMMONS C-96			
BT-B	BATHTUB/SHOWER UNIT	AMERICAN STANDARD ACRYLUX 60"x30" TUB W/ INTEGRAL APRON. MODEL NO. 6030Y1.	SYMMONS C-96			
SHR-A	SHOWER UNIT	AMERICAN STANDARD 36"x36" SHOWER BASE. MODEL NO. TR3636STC.	SYMMONS C-96			
SHR-B	SHOWER UNIT	AMERICAN STANDARD 60"x30" SHOWER BASE. MODEL NO. TR6030STS LEFT OR RIGHT HAND AS REQUIRED.	SYMMONS C-96			
SHR-C	SHOWER UNIT	AMERICAN STANDARD 60"x32" SHOWER BASE. MODEL NO. TR6030STS LEFT OR RIGHT HAND AS REQUIRED.	SYMMONS C-96			
SHR-D	SHOWER UNIT	AMERICAN STANDARD 36"x36" SHOWER BASE. MODEL NO. TR3636STC.	SYMMONS C-96 WITH 1 GPM SHOWER HEAD.			

NOTES: REFER TO ARCHITECTURAL DRAWINGS FOR SHOWER HEAD MOUNTING HEIGHT.

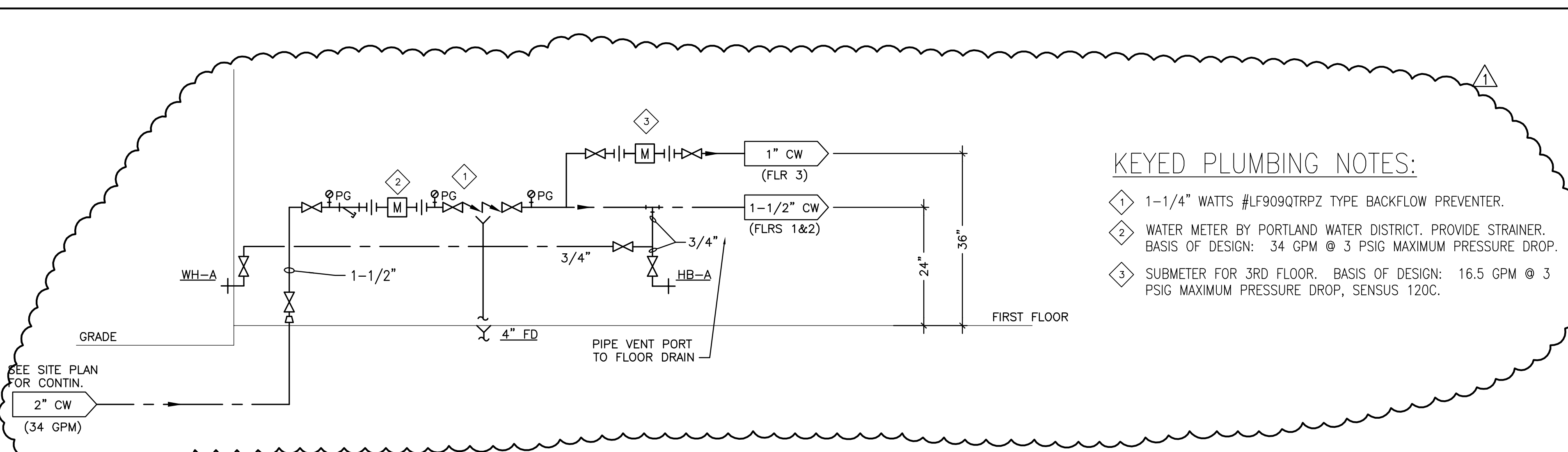
### DRAIN SCHEDULE

TAG	APPLICATION	TYPICAL UNIT MFG & MODEL NO.	DESCRIPTION	TRAP PRIMER	NOTES
FD-A	UNFINISHED EQUIPMENT SPACES	ZURN Z-415B	LIGHT-DUTY DRAIN, CAST IRON BODY & GRATE, 3/4" TRAP PRIMER CONNECTION	PRECISION PLUMBING PRODUCTS #PR-500	1
RD-A	ROOF DRAIN	ZURN ZA-100-DP	"TOP-SET" ROOF DRAIN, ALUMINUM DOME, COATED CAST IRON BODY	-	2

NOTES: 1. SLAB ON GRADE - CAULK OUTLET.  
 2. MEZZANINE/ROOF - NO HUB OUTLET.

### KEYED PLUMBING NOTES:

- 1 1-1/4" WATTS #LF909QTRPZ TYPE BACKFLOW PREVENTER.
- 2 WATER METER BY PORTLAND WATER DISTRICT. PROVIDE STRAINER. BASIS OF DESIGN: 34 GPM @ 3 PSIG MAXIMUM PRESSURE DROP.
- 3 SUBMETER FOR 3RD FLOOR. BASIS OF DESIGN: 16.5 GPM @ 3 PSIG MAXIMUM PRESSURE DROP, SENSUS 120C.



A1 WATER ENTRANCE SCHEMATIC

NO SCALE

Prepared For: New Day Farm LLC  
Gorham Maine

Consultant: VIRIDIS ENGINEERING  
20 Mechanics Street  
Telephone: (207) 222-0044  
www.viridisesengineering.com

Architect: ARCHETYPE architects  
48 Union Wharf Portland, Maine 04101  
(207) 772-6022 Fax: (207) 772-4056

Project: Sheridan Street Townhouses  
152 Sheridan Street  
Portland Maine 04101

Revisions:

Scale: 1/4" = 1'-0"

Date: February 28, 2014

PLUMBING DETAILS AND SCHEDULES

p3.0