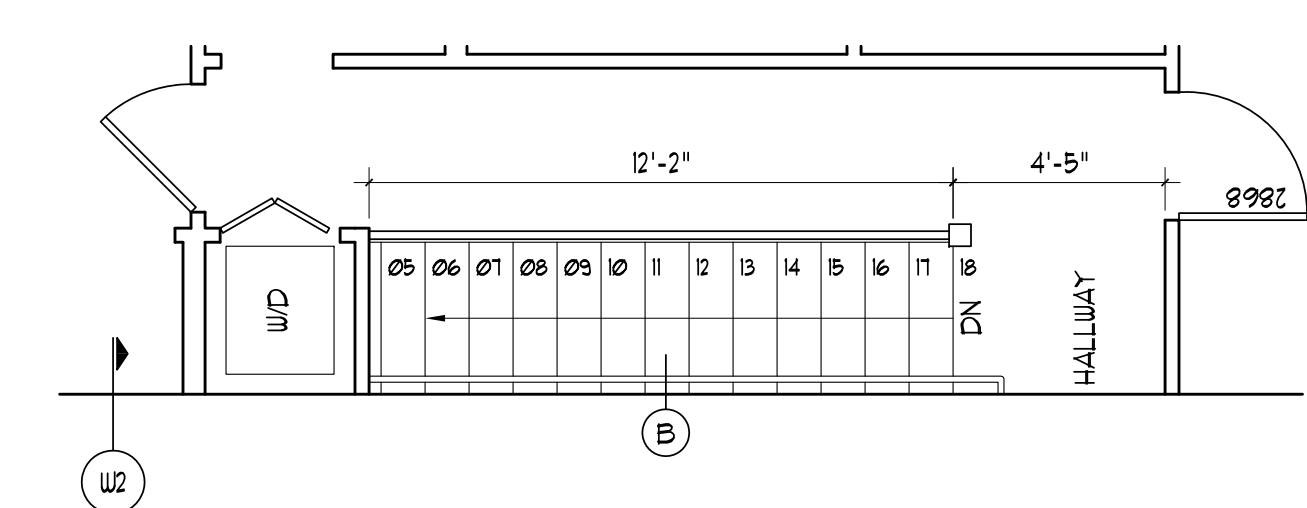
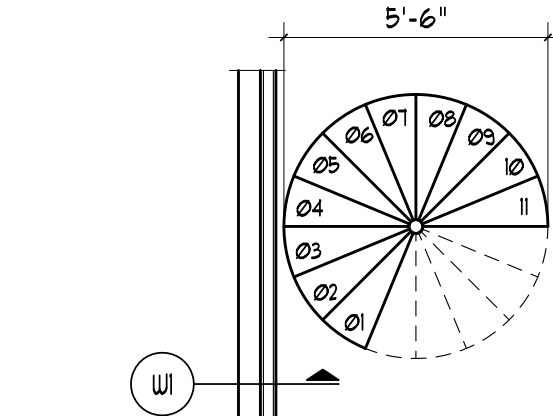
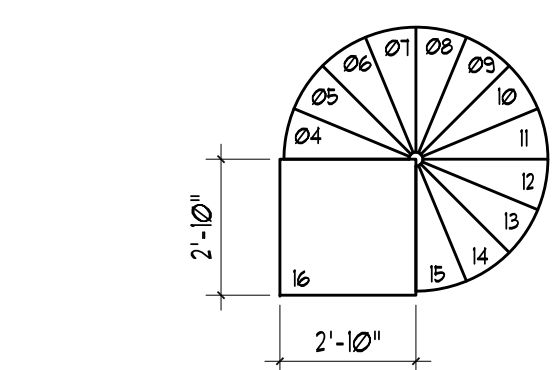
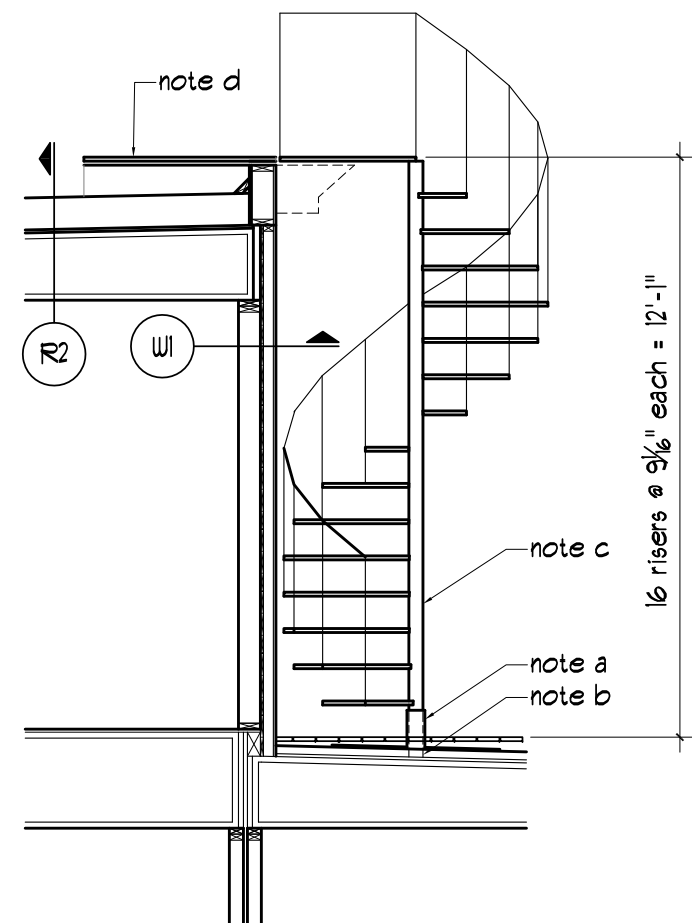


2a Stair at duplex unit cross section
1/4" = 1'-0"

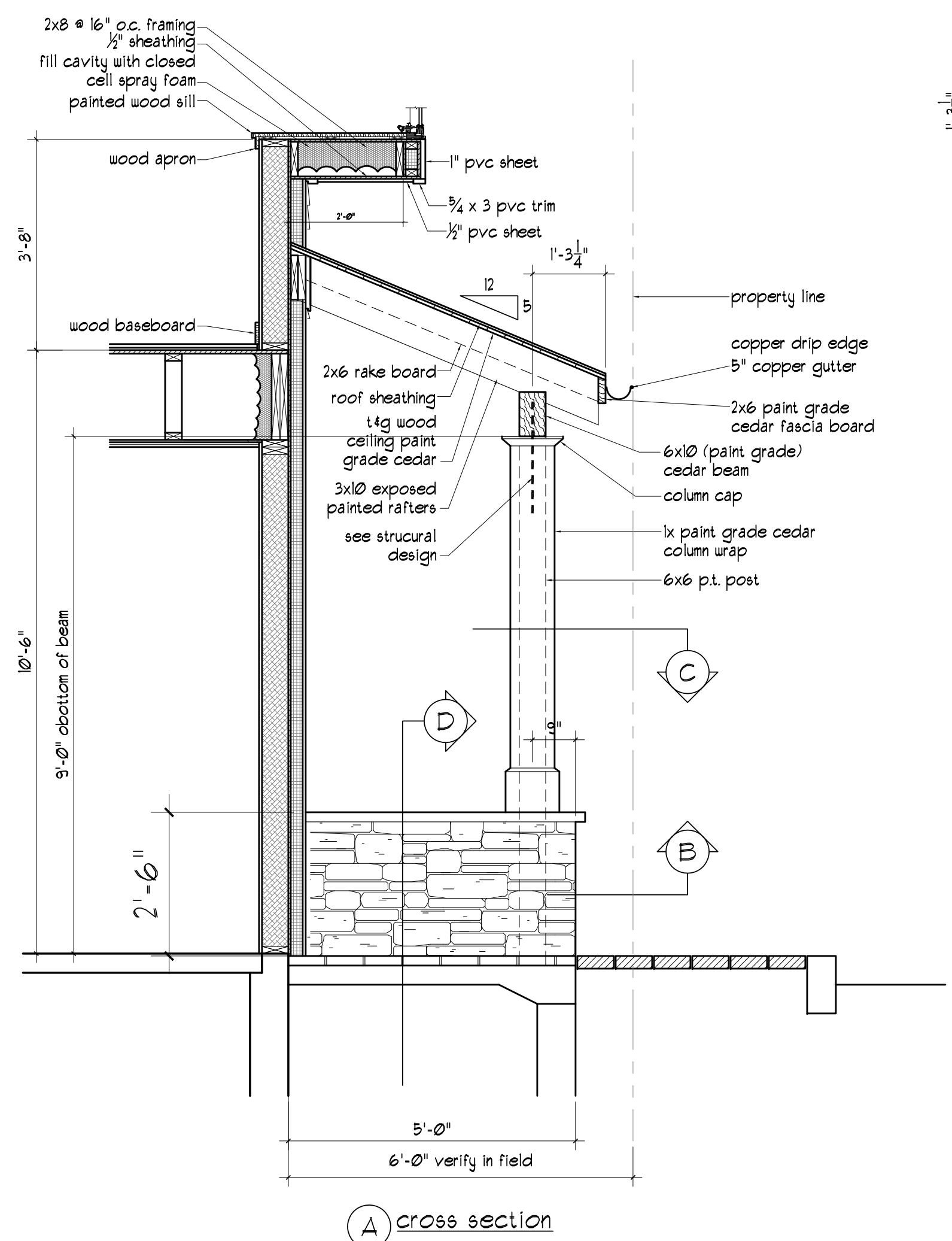


2 Stair at duplex unit plan
1/4" = 1'-0"

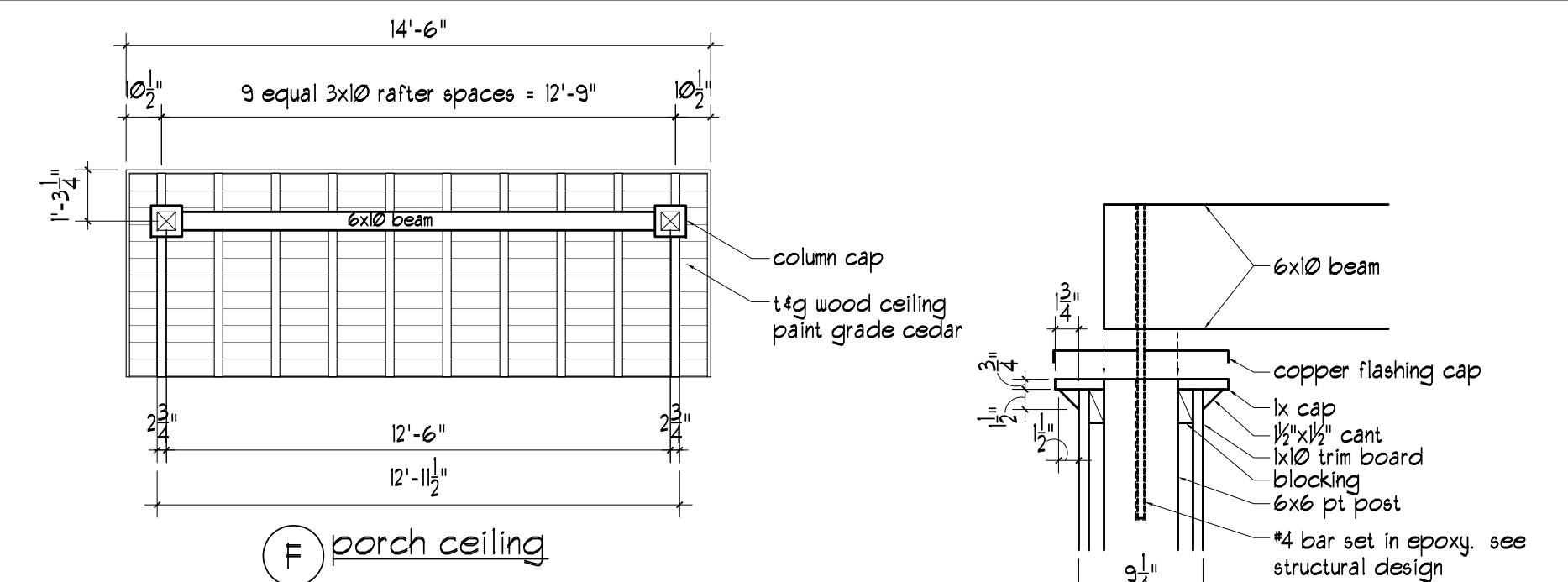
Spiral Stair Notes:
 a. provide flashing boot according to roofing manufacturer's standard details
 b. See structural drawings for fastening support pole to roof framing.
 c. 6" diameter metal spiral stair as manufactured by The Iron Shop®. Provide shop drawings for stair showing compliance with requirements of IBC 2009 and NFPA 101 Life Safety Handbook
 d. provide 3'x3' platform to match elevation level of stair landing



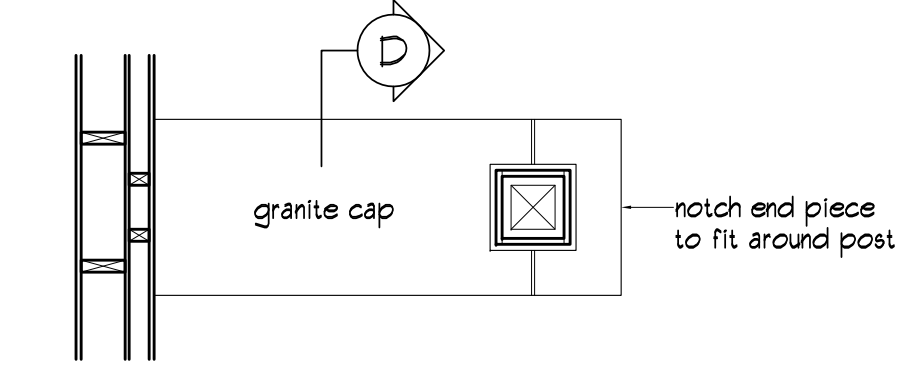
4 Spiral Stair at 3rd floor deck
1/4" = 1'-0"



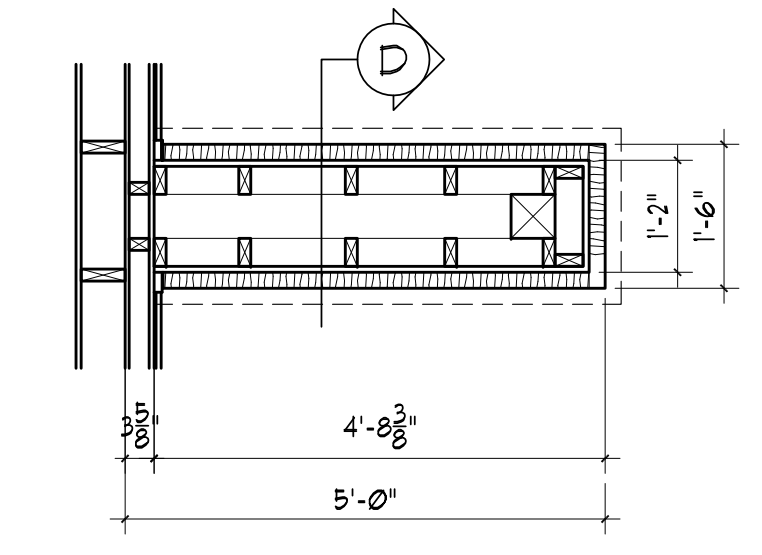
A cross section



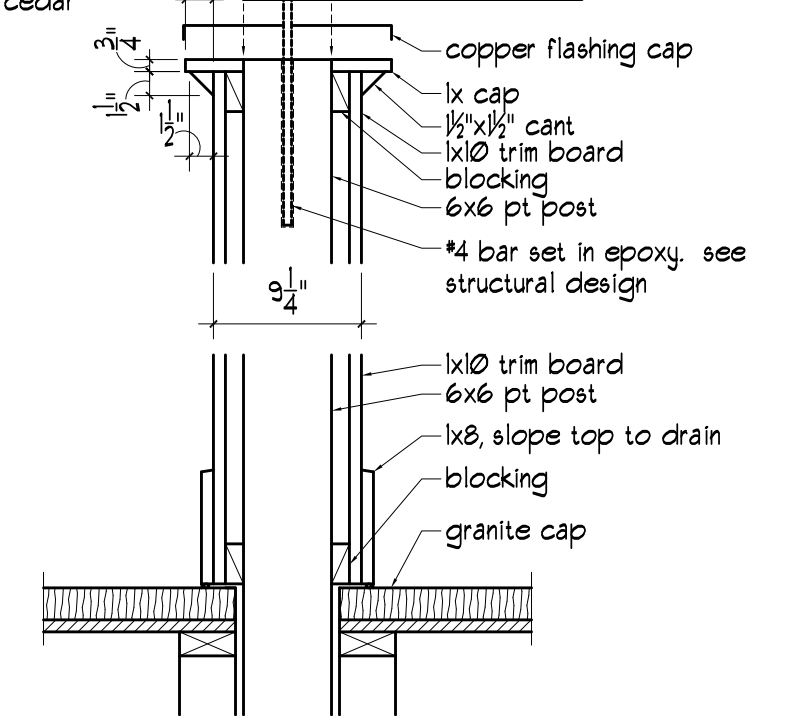
F porch ceiling



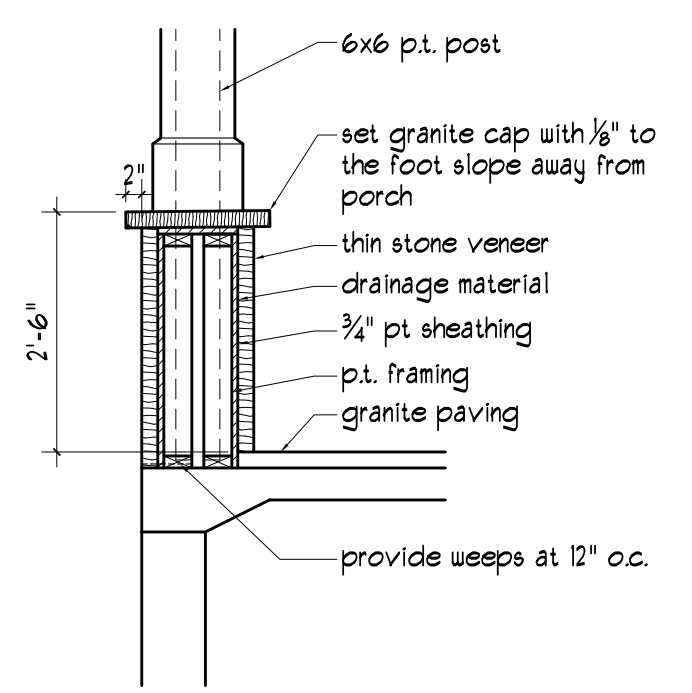
C plan detail



B plan detail

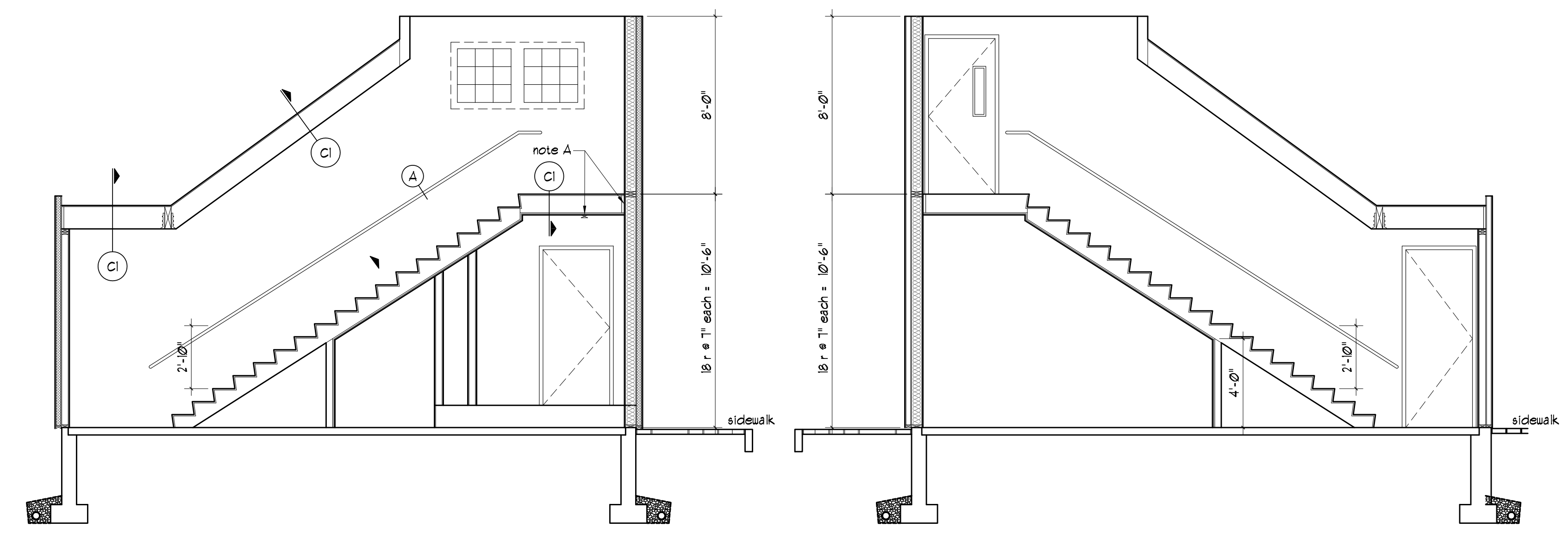


E column cap and base

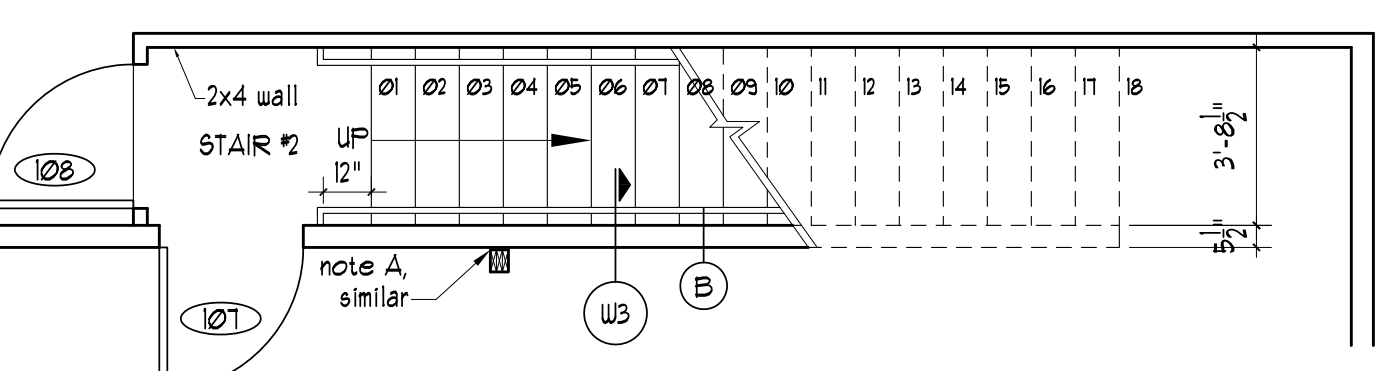


D section at wall

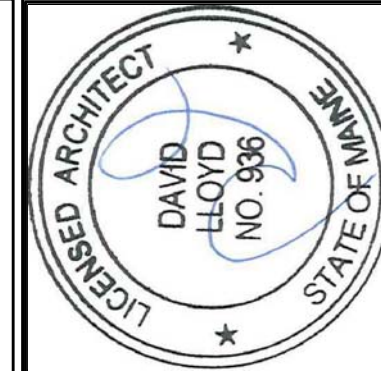
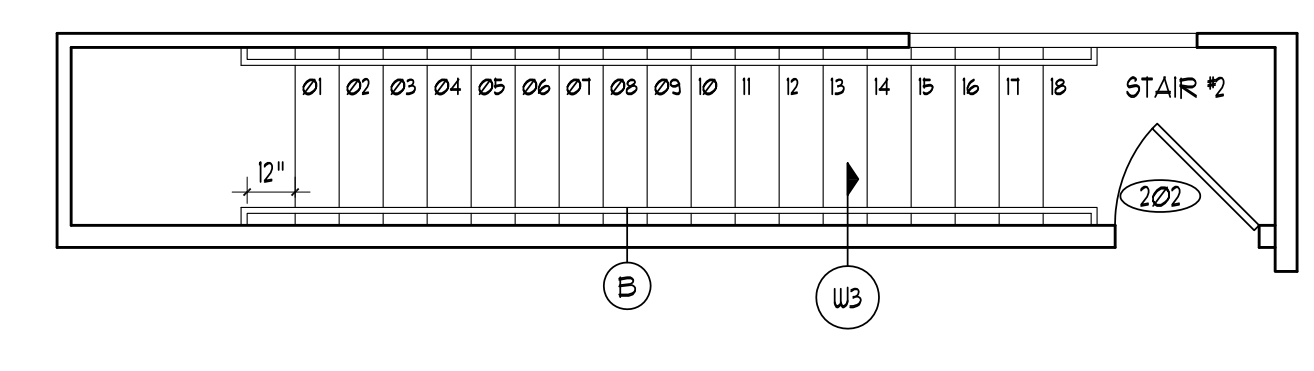
3 Porch Details
1/2" = 1'-0"



1a Stair #2 Cross Section
1/4" = 1'-0"



1 Stair #2 Plan
1/4" = 1'-0"



Prepared For:
New Day Farm LLC
Gorham Maine

Architect:
ARCHETYPE architects
48 Union Wharf Portland, Maine 04101
(207) 772-6022 Fax (207) 772-4056

Project:
Sheridan Street Townhouses
152 Sheridan Street
Portland Maine 04101

Scale:
1/4" = 1'-0"
Date:
March 10, 2014

STAIRS
a3.5