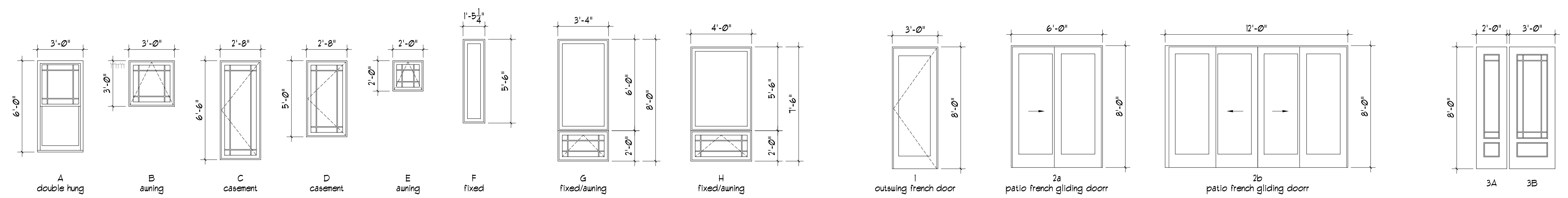
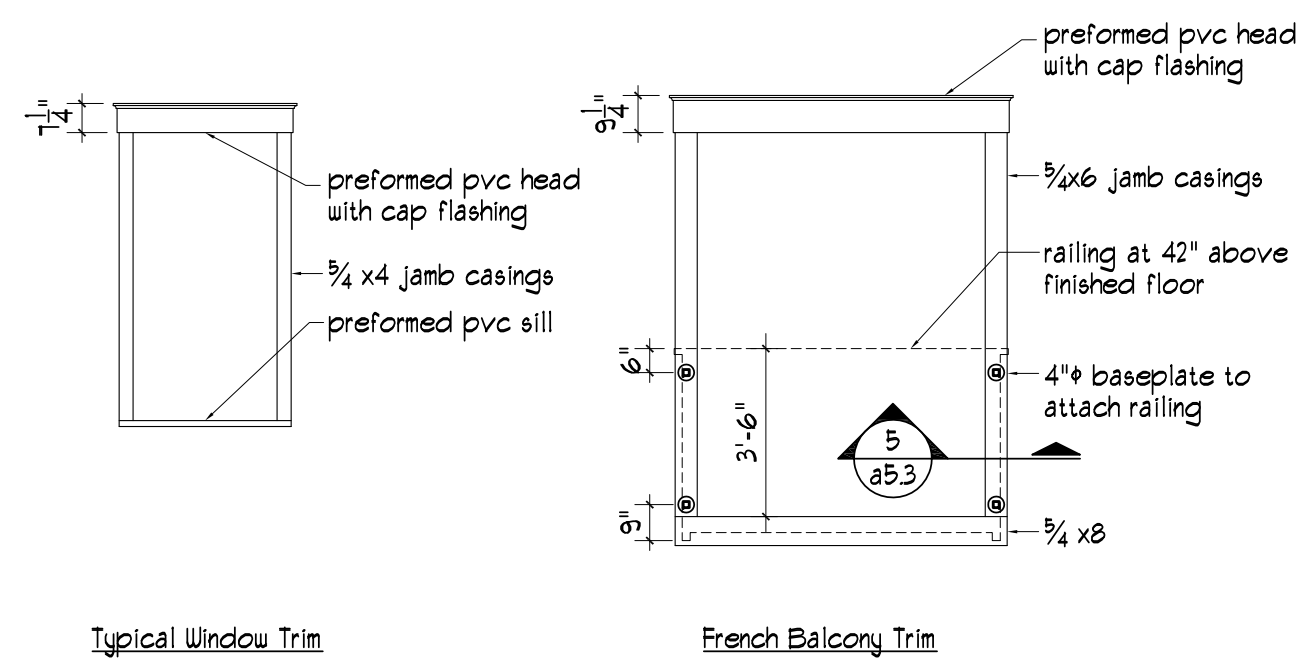


**1 North Elevation (Sheridan Street)**  
1/4" = 1'-0"

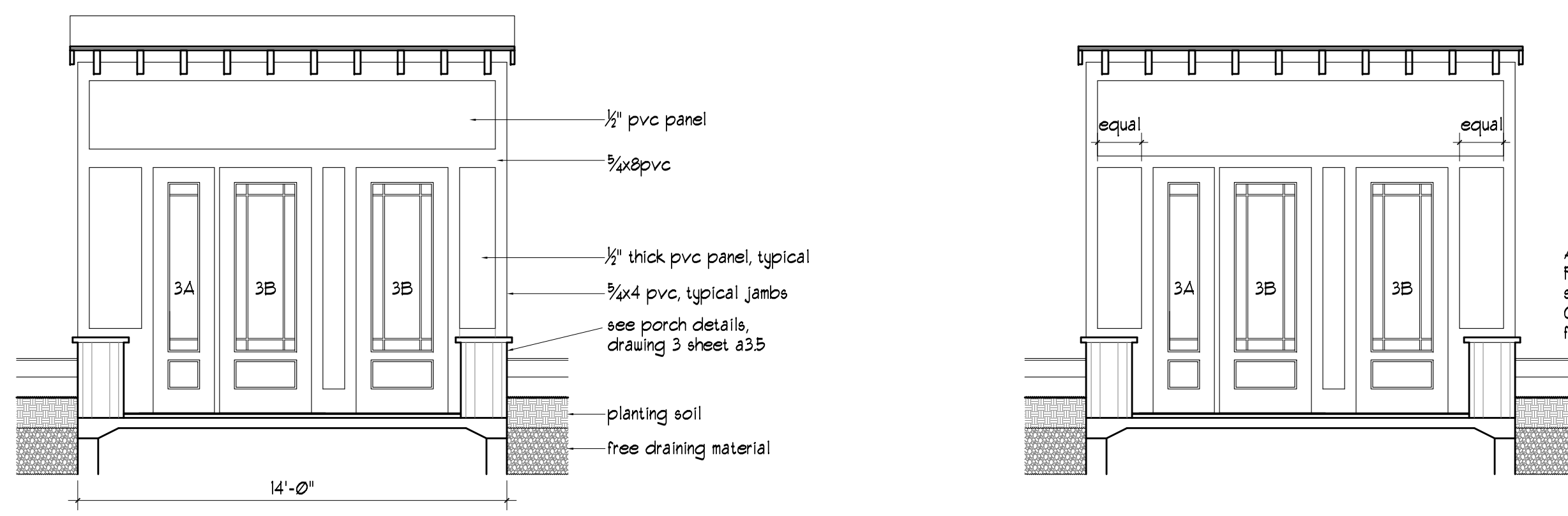
**1a Side of Bay**  
1/4" = 1'-0"



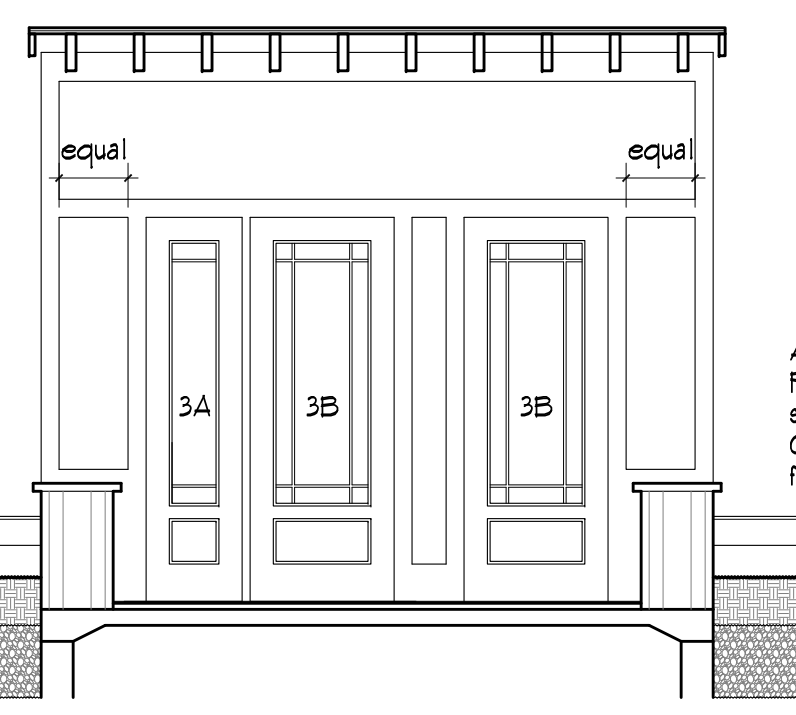
- WINDOW SCHEDULE**
- All Windows are Anderson E Series Eagle brand aluminum clad windows
  - Doors 1 and 2 are Anderson E Series Eagle brand aluminum clad windows
  - Sizes shown are nominal
  - Windows set up for drywall returns or jamb extensions for 5/8" gypsum board
  - Standard exterior finish
  - Standard pine interior finish
  - Standard Hardware
  - Standard low e glass
  - 1/8" Colonial modern divided light
  - Standard insect screens
  - Bottom units at F&H, are tempered (within 18" of floor)
  - Doors 3A and 3B to be Simpson or Rogue Valley



**2 Window Schedule**  
1/4" = 1'-0"



**3 Elevation at Porch**  
1/4" = 1'-0"



**3a Elevation at Porch Alternate**  
1/4" = 1'-0"

Alternate:  
Porch location to be moved right, so that end panels are equal width. Coordinate change in location with foundation plan