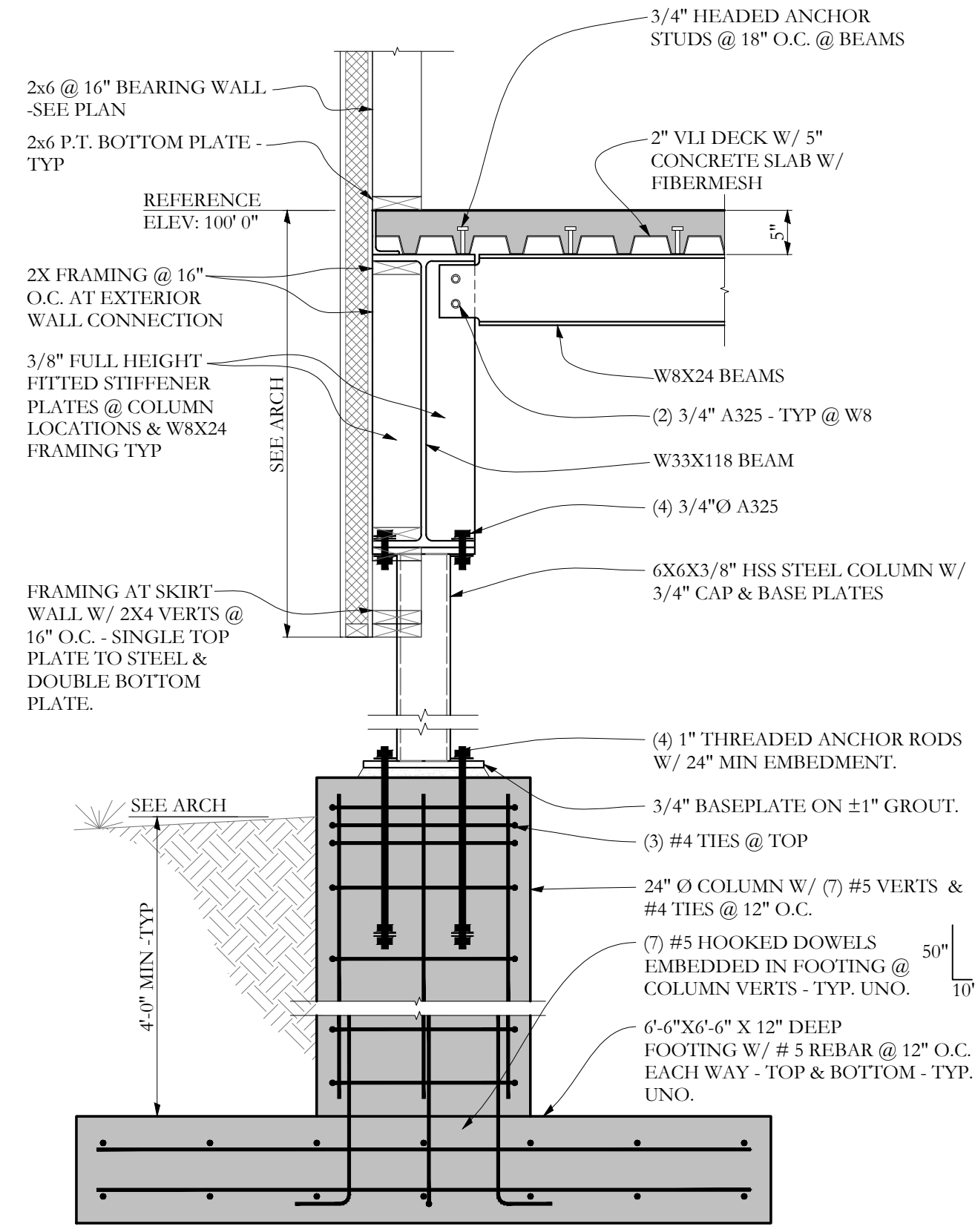
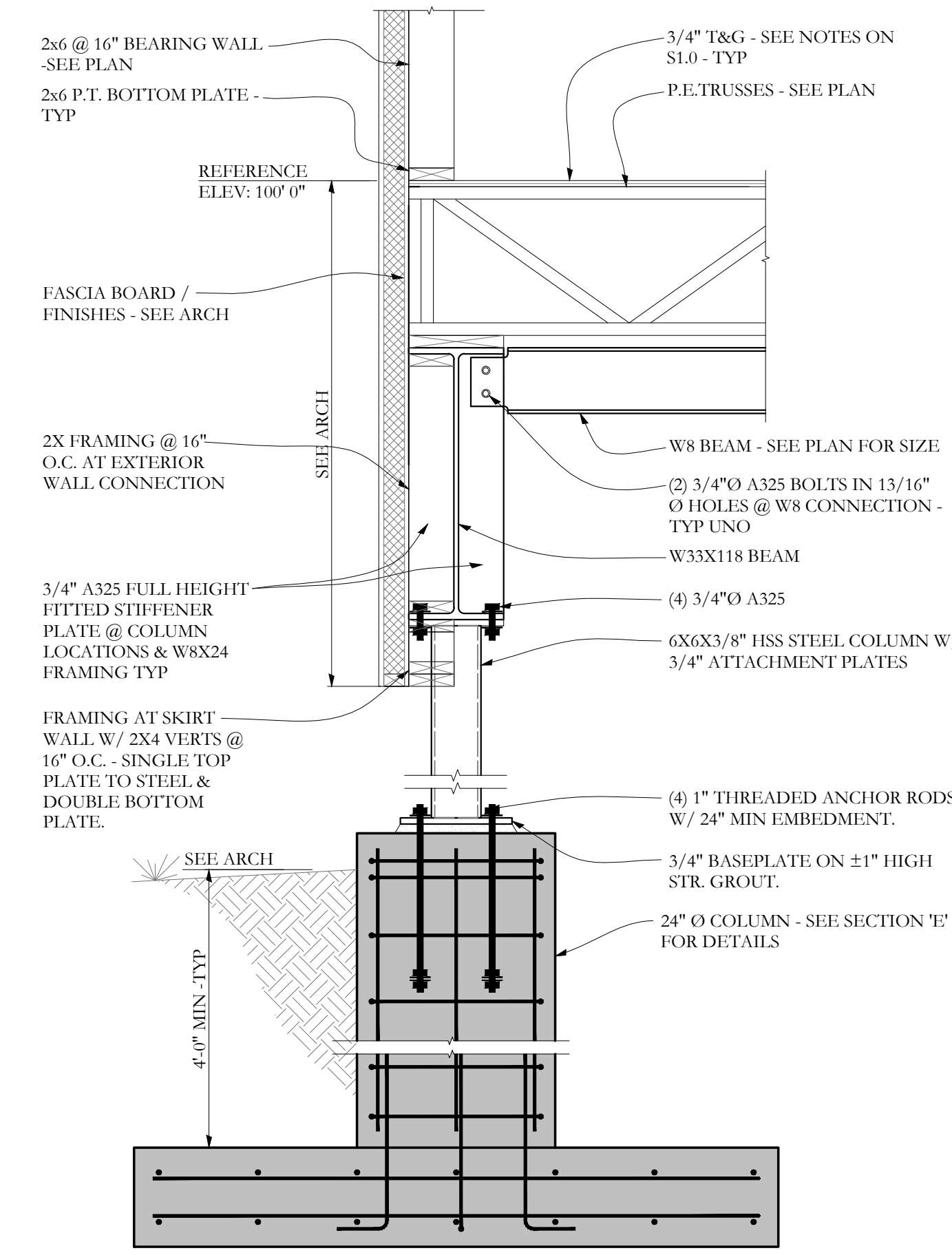


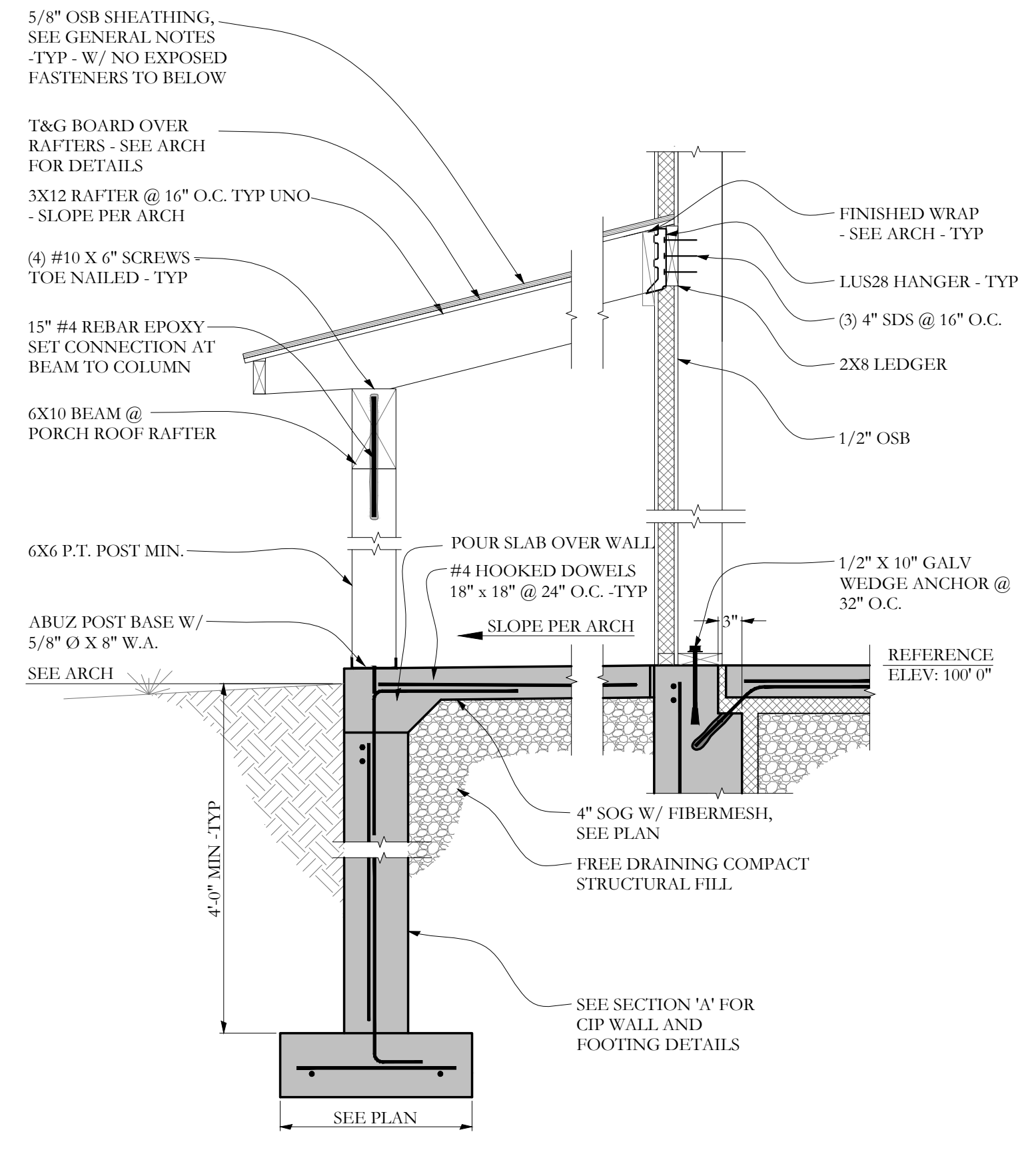
SECTION **E** S2.1 3/4"=1'-0



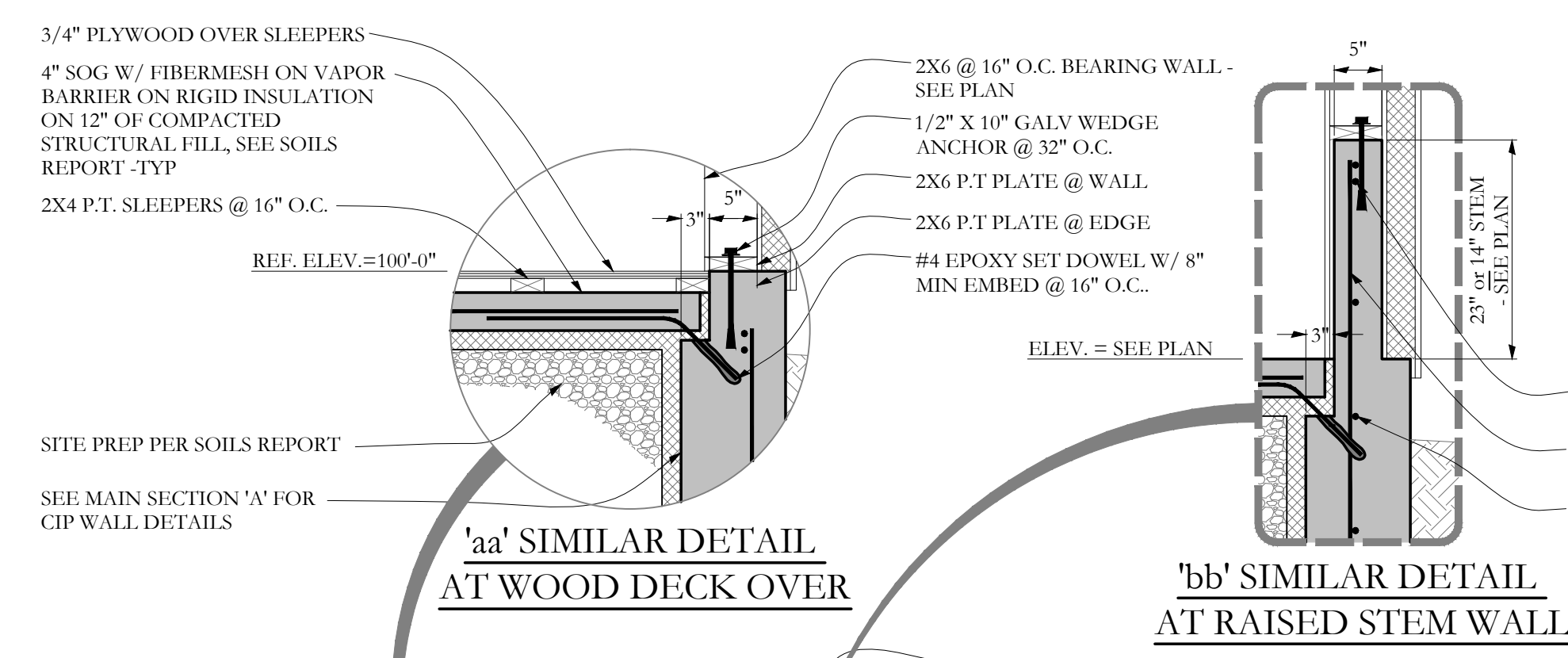
SECTION **F** S2.1 3/4"=1'-0



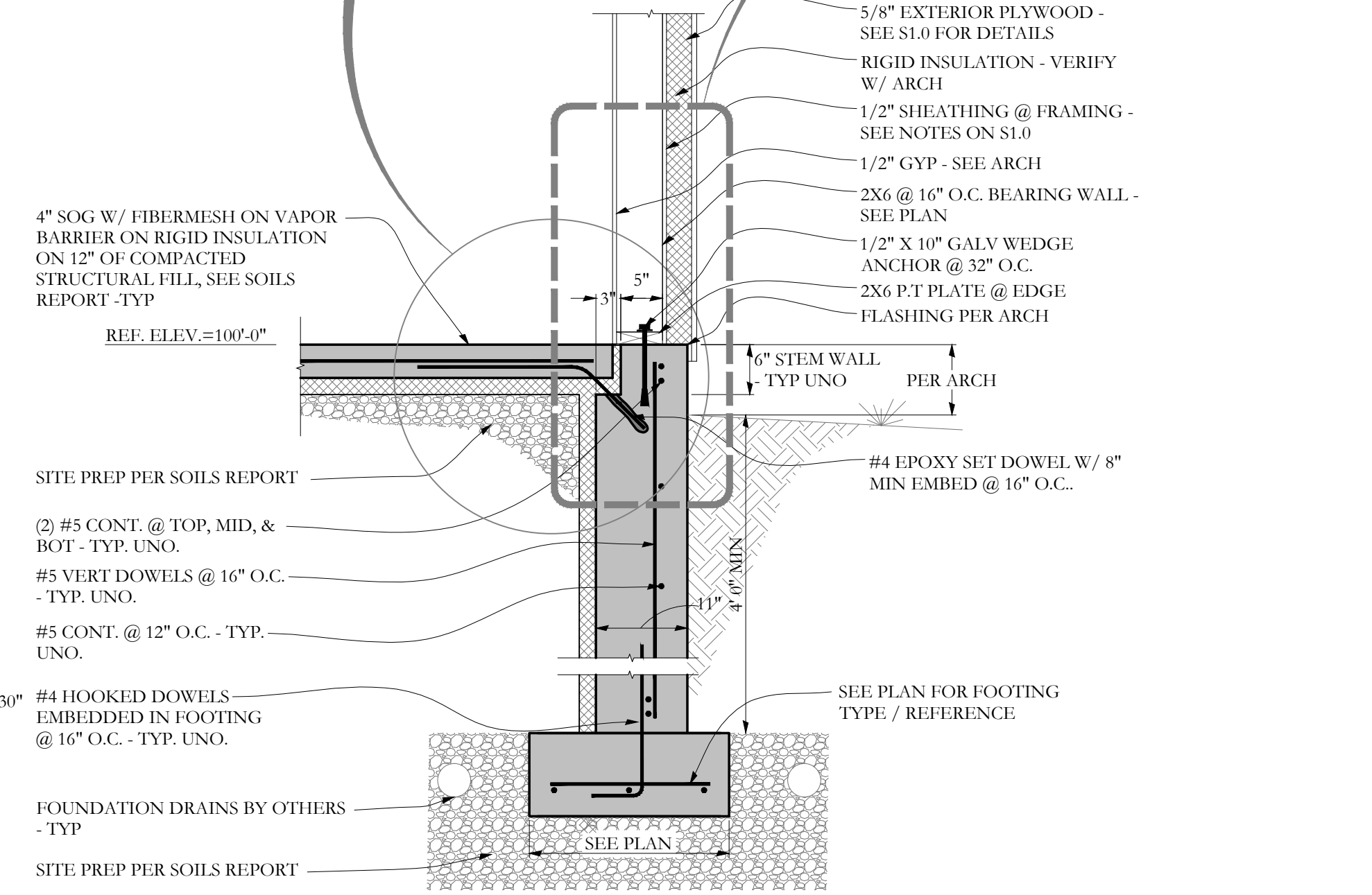
SECTION **G** S2.1 3/4"=1'-0



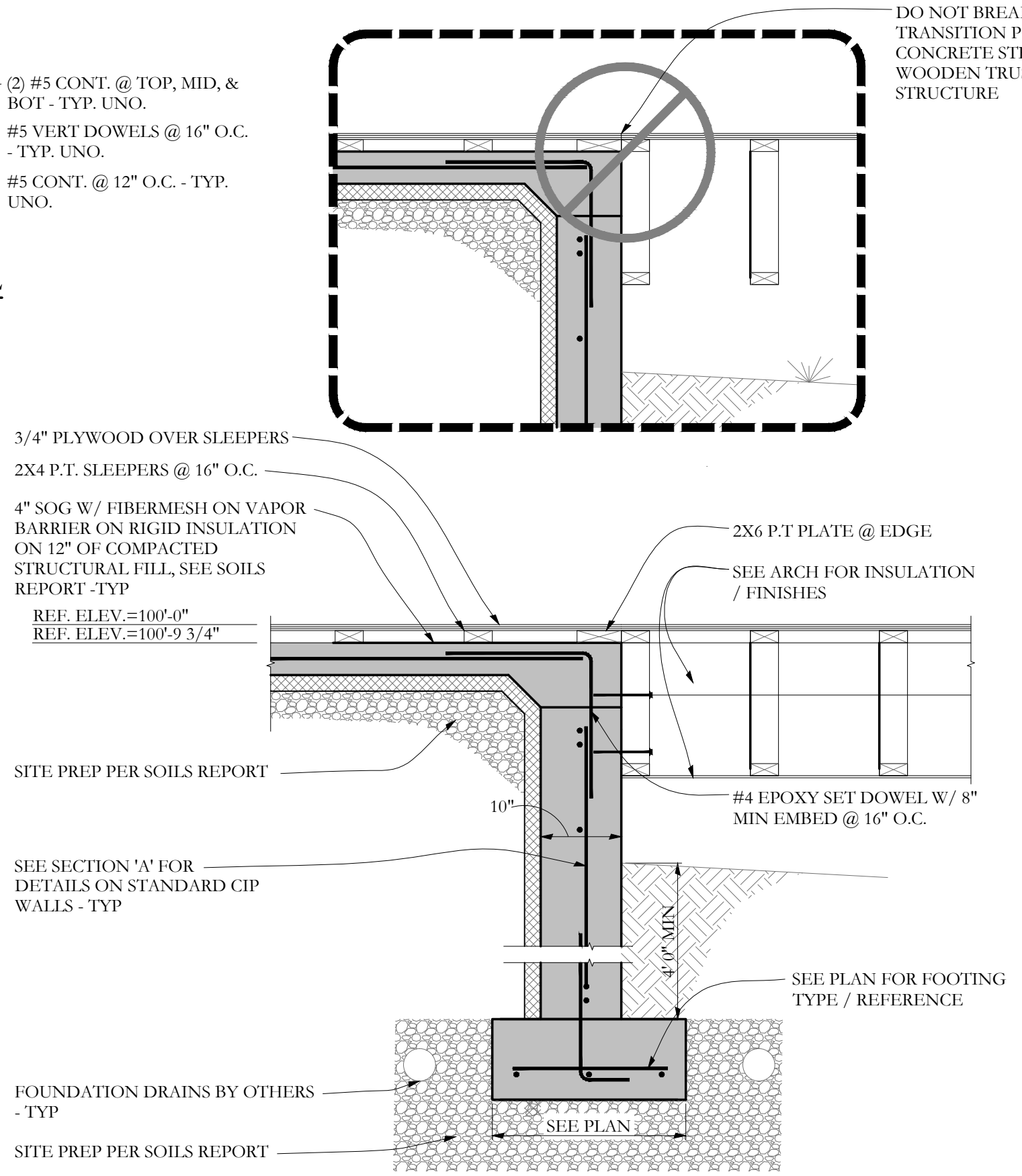
SECTION **H** S2.1 3/4"=1'-0



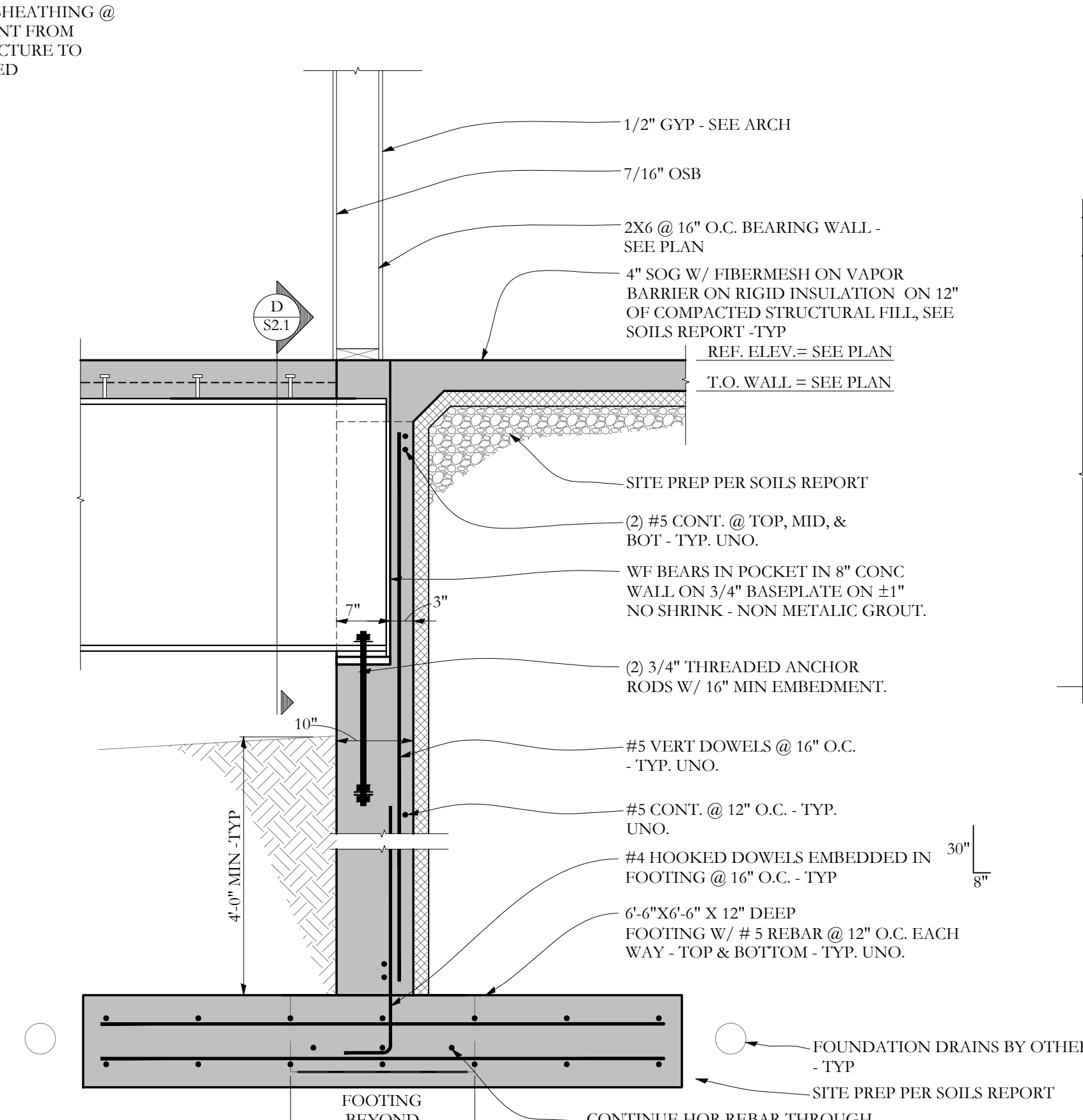
SECTION **A** S2.1 3/4"=1'-0



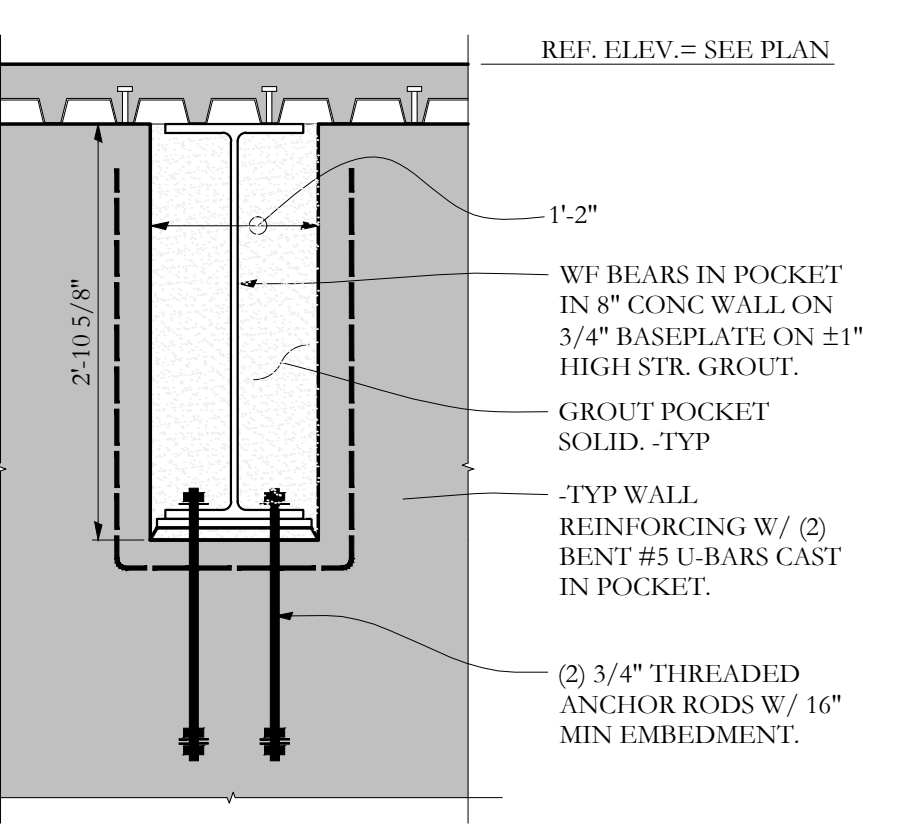
SECTION **B** S2.1 3/4"=1'-0



SECTION **C** S2.1 3/4"=1'-0

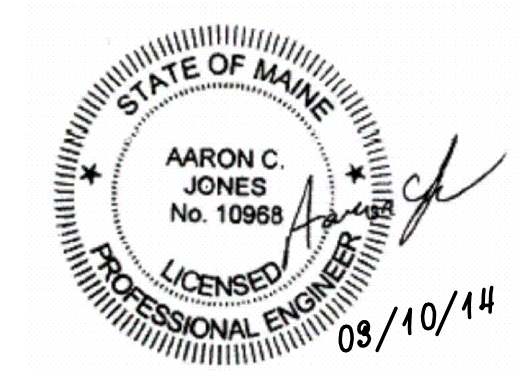


SECTION **D** S2.1 3/4"=1'-0



SECTION **D** S2.1 3/4"=1'-0

Architect:	ARCHETYPE architects 48 Union Wharf - Portland, Maine 04101 (207) 772-6022 Fax (207) 772-4056
Project:	SHERIDAN STREET SHERIDAN STREET PORTLAND, MAINE
Scale:	AS NOTED
Date:	10 March 2014
Revisions:	
Prepared For:	
Consulting Engineer:	
SECTION	S2.1



Structural Integrity
Consulting Engineers, Inc.
77 Oak Street
Portland, ME, 04101
p. 207-774-4614
f. 866-793-7835
www.structuralinteg.com
BUILD WITH CONFIDENCE
© 2014 Structural Integrity Consulting Engineers, Inc.

SI # 13-0139