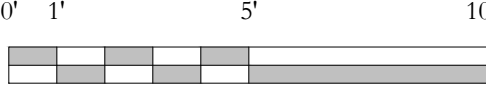
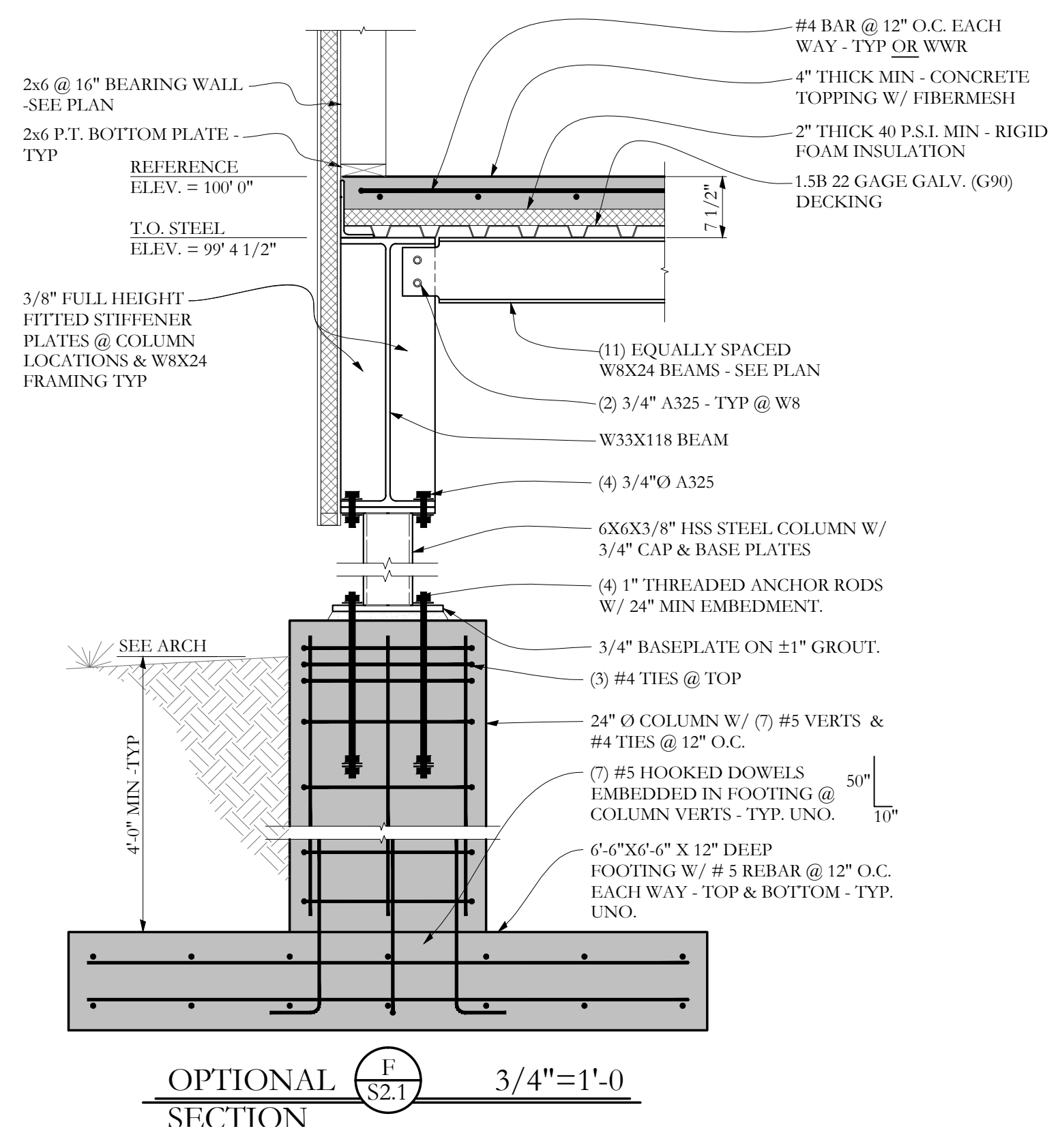


**FOUNDATION / OPTIONAL GARAGE STRUCTURE PLAN**

SCALE 1/4"=1'-0"



- NOTES:
1. ALL FOOTINGS ARE 10" DEEP 2'-0" WIDE x CONT. WITH (2) # 4 BARS LONGITUDINAL, AND #4 CROSS TIES @ 32" O.C. TYP. UNO
  2. STEP IN TOP OF FOUNDATION WALL IS INDICATED THUS: AND SHOWS LOWER SIDE OF WALL.
  3. SEE S1.1 FOR STRUCTURAL GENERAL NOTES
  4. FOOTING TO BEAR 4'-6" MIN BELOW GRADE T.O. FOOTINGS ARE INDICATED THUS: (XX'-XX")
  5. STEP IN TOP OF FOOTING IS INDICATED THUS: AND SHOWS LOWER FOOTING.
  6. [TS = XXX-XX] INDICATES TOP OF STEEL ELEVATION.
  7. ALL W8 AND W33 @ VLI DECKING TO HAVE 3/4" H.A.S. @ 18" MAX - TYP
  8. COORDINATE OPTIONAL DECK WITH ADJACENT FLOOR SYSTEMS.

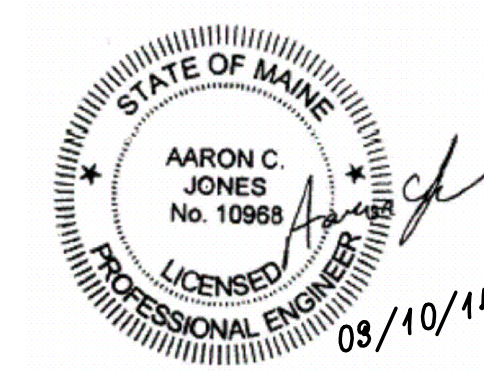


OPTIONAL SECTION F/S2.1 3/4"=1'-0"

**Structural Integrity**  
Consulting Engineers, Inc.

77 Oak Street  
Portland, ME, 04101  
p. 207-774-4614  
f. 866-793-7835  
[www.structuralinteg.com](http://www.structuralinteg.com)

BUILD WITH CONFIDENCE  
© 2014 Structural Integrity Consulting Engineers, Inc.



Prepared For:	
Consulting Engineer:	<b>ARCHETYPE</b> Architects 48 Union Wharf Portland, Maine 04101 (207) 772-6022 Fax (207) 772-4056
Architect:	<b>SHERIDAN STREET</b> SHERIDAN STREET PORTLAND, MAINE
Project:	
Revisions:	
Date:	10 March 2014
Scale:	AS NOTED
	<b>GARAGE DECK OPTION</b>
SI # 13-0139	<b>S1.5</b>