

# PLANTING SPECIFICATIONS

## DESCRIPTION

Work under this Section shall include all labor, materials, services, equipment and accessories necessary to furnish and install plant material in complete accordance with these specifications and applicable Drawings.

## QUALITY ASSURANCE

- 1) Installer's Personnel Qualifications: Reputable landscape contractor with a min. 5 years experience in landscape construction and licensed to perform work as described in this section.
- 2) Comply with all applicable federal, state and local regulations governing landscape materials and work.

## WARRANTY

- 1) All Plants shall be guaranteed by the landscape contractor for one full year from date of acceptance by the Owner's Representative.
- 2) All replacement stock shall be subject to the same warranty requirements as the original stock.

## MATERIALS

- 1) All plant stock shall be nursery grown and comply with ANSI Z60.1 (American Standard for Nursery Stock).
- 2) All stock shall be container grown stock unless otherwise indicated.
- 3) Damaged plants and plants that do not meet requirements will be rejected.
- 4) Topsoil/Planting Soils: Topsoil or manufactured topsoil shall consist of 3 parts loam amended with 1 part peat humus. Provide friable natural topsoil free of rocks, stones, brush, clay, lumps, twigs, litter, extraneous material, noxious weeds and seeds.
- 5) Fertilizer: Slow release packets or tablets containing the following composition: Nitrogen 16%, Phosphoric acid 8%, and Potash 16% (one per shrub at 6-8" depth).
- 6) Mulch: Nutri-Mulch from New England Organics ([www.earthlifegrows.com](http://www.earthlifegrows.com)) or approved equal.
- 7) Erosion Control Seed Mix: New England Erosion Control/restoration mix from New England Wetland Plants, Inc. or approved equal.

## INSTALLATION

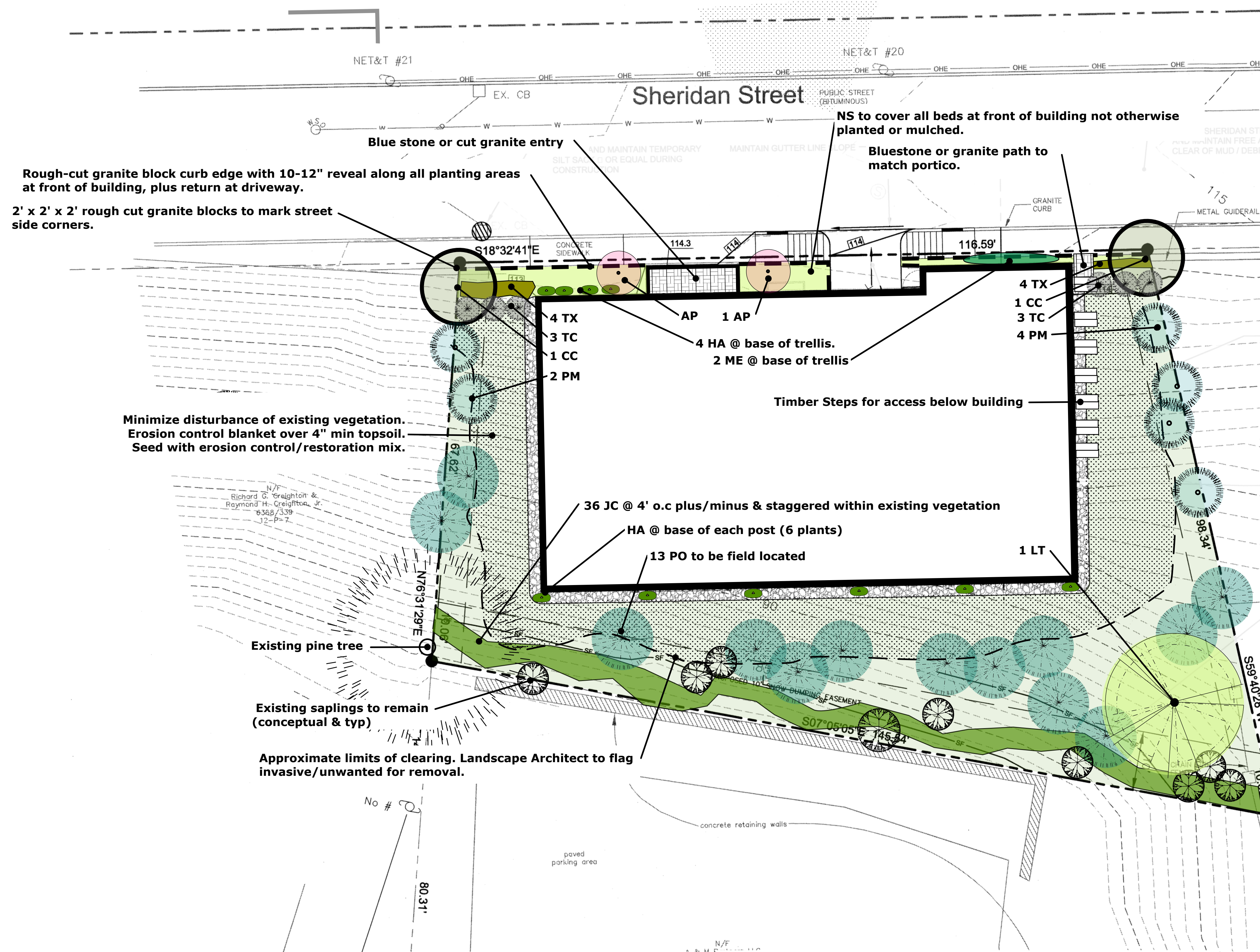
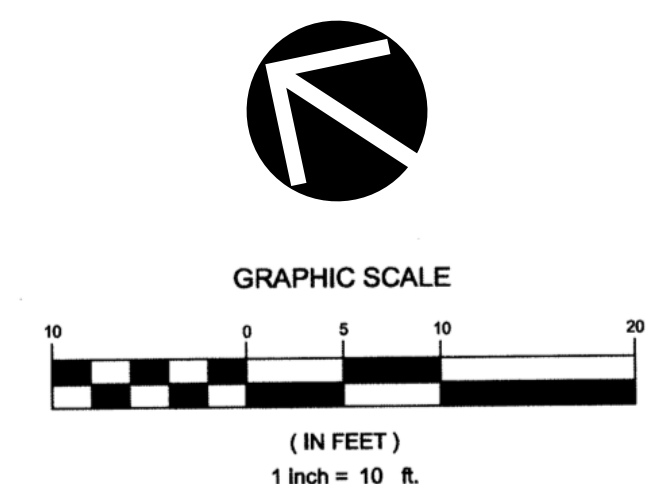
- 1) Modifications of Plan: Any changes to the planting plan or plant list shall be approved by the Landscape Architect.
- 2) Site Preparation: The landscape contractor shall notify the Owner's Representative a minimum of 48 hours prior to installation to coordinate installation and location of plant material.
- 3) Soil Amendments: In locations of high clay content apply gypsum additives to break down the clay.
- 4) Planting: All planting shall be done as shown on drawings and as specified herein and in strict accordance with standard horticultural practices.
- 5) Pruning: All dead or damaged branches shall be removed from plants. Prune an additional 1/4 of remaining branches to encourage root growth.
- 6) Mulch: Each plant shall be individually mulched with 3"-4" or approved material.
- 7) Clean-up: The Contractor shall remove all debris, construction equipment, excess fill, rocks, and other excess material caused by this work, from the site upon completion of work.
- 8) Maintenance: All plants shall be maintained in accordance with standard practices and guaranteed for one year from date of installation.

## END OF SECTION

Richard G. Creighton &  
Raymond H. Creighton, Jr.  
6368/339  
12-P-28

N/F  
Edward F. Cogswell  
21263/261  
12-P-27

N/F  
Shane Dobson  
23075/190  
12-P-25



Rough-cut granite block curb edge with 10-12" reveal along all planting areas at front of building, plus return at driveway.

2' x 2' x 2' rough cut granite blocks to mark street side corners.

NS to cover all beds at front of building not otherwise planted or mulched.

Bluestone or granite path to match portico.

Minimize disturbance of existing vegetation. Erosion control blanket over 4" min topsoil. Seed with erosion control/restoration mix.

N/F  
Richard G. Creighton &  
Raymond H. Creighton, Jr.  
6368/339  
12-P-28

Existing pine tree  
Existing saplings to remain (conceptual & typ)

Approximate limits of clearing. Landscape Architect to flag invasive/unwanted for removal.

### New England Erosion Control/Restoration Mix For Dry Sites

BOTANICAL NAME	COMMON NAME	IND.
<i>FESTUCA RUBRA</i>	CREeping RED FESCUE	FACU
<i>ELYMUS CANADENSIS</i>	CANADA WILD RYE	FACU+
<i>LOLIUM MULTIFLORUM</i>	ANNUAL RYEGRASS	NI
<i>LOLIUM PERENNE</i>	PERENNIAL RYEGRASS	NI
<i>BOUTELOUA GRACILIS</i>	BLUE GRAMA	NI
<i>SCHIZACHYRIUM SCOPARIUM</i>	LITTLE BLUESTEM	FACU
<i>SORGHASTRUM NUTANS</i>	INDIAN GRASS	UPL
<i>AGROSTIS SCABRA</i>	ROUGH BENTGRASS/TICKLEGRASS	FAC
<i>AGROSTIS PERENNANS</i>	UPLAND BENTGRASS	FACU

Symbol	Latin Name	Common Name	#	Size	Notes
AP	<i>Acer palmatum</i> 'Katsura'	Katsura Japanese Maple	2	#7	Protect trunk of tree with rodent protection
CC	<i>Magnolia acuminata</i> 'Ultimate Yellow'	Magnolia Hybrid 'Ultimate Yellow'	2	1.5'	Protect trunk of tree with rodent protection
HA	<i>Hydrangea anomala</i> petiolaris	Climbing hydrangea	10	#7	
JC	<i>Juniperus chinensis</i> 'Blue Pfitzer'	Blue Pfitzer Juniper	36	#3	
LT	<i>Liriodendron tulipifera</i>	Tulip Tree	1	6-8'	Protect trunk of tree with rodent protection
NS	Native sod to include blueberry, bunchberry, & hay scented fern.				
ME	<i>Malus espalier</i>	Espaliered Apple	2	#15	Gala, 'Honeycrisp' and 'Liberty'
PM	<i>Pinus Mugo</i> 'Montana'	Montana Mugo Pine	6	2-2.5'	
PO	<i>Picea omorika</i>	Serbian Spruce	13	4-5' & 5-6'	App. equal number of each size; plant randomly.
TC	<i>Taxus cuspidata</i> 'Capitata'	Upright Japanese Yew	6	3-3.5'	
TX	<i>Taxus x media</i> 'Tauntonii'	Taunton Yew	8	15-18"	

**pbla**  
peter burke landscape architecture  
207-632-7372 info@peterburkedesign.com

**FST** ENGINEERS  
FAY, SPOFFORD & THORNDIKE, INC.  
ENGINEERS · PLANNERS · SCIENTISTS  
5 BURLINGTON WOODS, BURLINGTON, MA 01803

Prepared For: <b>NEW DAY FARM, LLC</b>	Project: <b>SHERIDAN STREET TOWNHOUSES</b>	Revisions: Minor changes for planning board 1-16-14 Minor changes per city arborist 1-23-14
GORHAM, ME 04038	152 SHERIDAN STREET PORTLAND, MAINE	
Architect: <b>ARCHETYPE Architects</b>	12-10-2013	Scale: 1" = 10'
48 Union Wharf Portland, Maine 04101 (207) 772-6022 Fax (207) 772-4056	<b>Landscape Plan</b>	<b>L-1</b>