

© 2016 RYAN SENATORE ARCHITECTURE

123 WASHINGTON
123 WASHINGTON AVENUE
PORTLAND, MAINE



RYAN SENATORE
ARCHITECTURE
565 CONGRESS STREET
PORTLAND, MAINE 04101
207-650-6414
senatorearchitecture.com

CONSULTANTS:

REVISIONS:

DATE: DECEMBER 05, 2016

PROJECT No. 1638

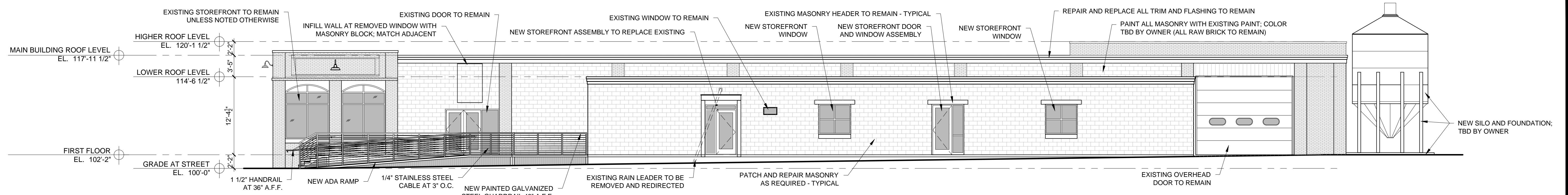
DRAWN BY: JPF

CHECKED BY: RJS

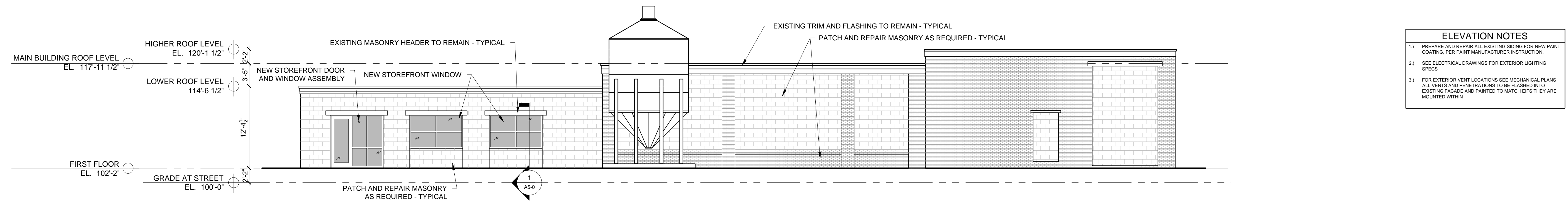
SCALE: AS NOTED

SHEET TITLE:
EXTERIOR
ELEVATIONS

A2-0

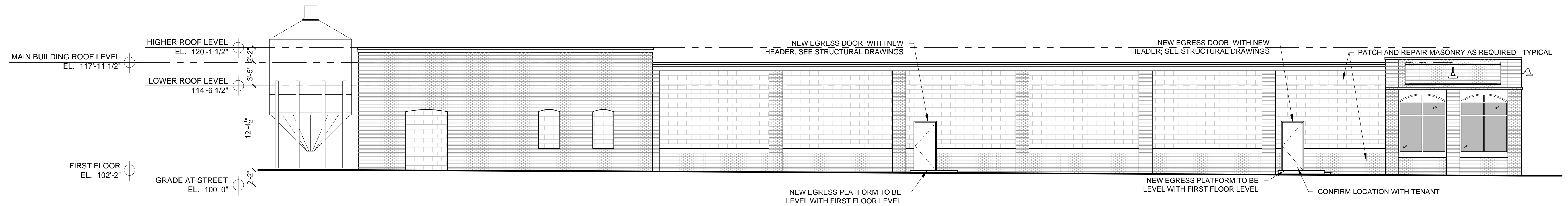


4 SOUTH EXTERIOR ELEVATION
1/4" = 1'-0"

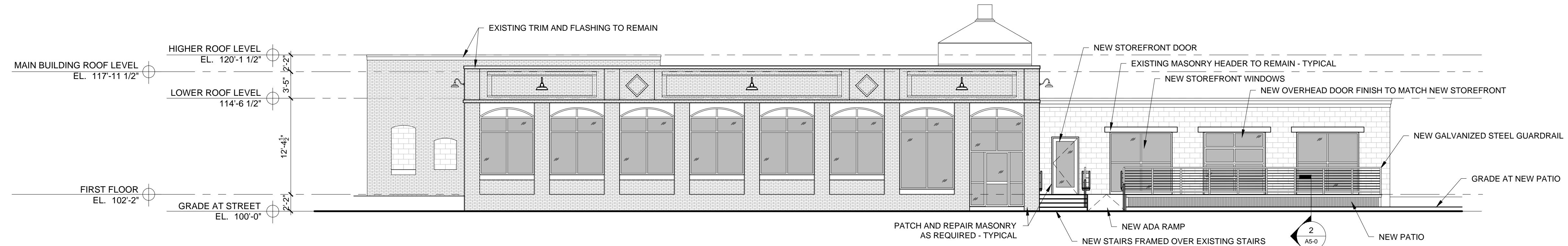


- ELEVATION NOTES**
- 1) PREPARE AND REPAIR ALL EXISTING SIDING FOR NEW PAINT COATING, PER PAINT MANUFACTURER INSTRUCTION.
 - 2) SEE ELECTRICAL DRAWINGS FOR EXTERIOR LIGHTING SPECS
 - 3) FOR EXTERIOR VENT LOCATIONS SEE MECHANICAL PLANS ALL VENTS AND PENETRATIONS TO BE FLASHED INTO EXISTING FACADE AND PAINTED TO MATCH EPS; THEY ARE MOUNTED WITHIN

3 EAST EXTERIOR ELEVATION
1/4" = 1'-0"



2 NORTH EXTERIOR ELEVATION
1/4" = 1'-0"



1 WEST EXTERIOR ELEVATION
1/4" = 1'-0"