



© 2016 RYAN SENATORE ARCHITECTURE

123 WASHINGTON
123 WASHINGTON AVENUE
PORTLAND, MAINE



RYAN SENATORE ARCHITECTURE
565 CONGRESS STREET
PORTLAND, MAINE 04101
207-650-6414
senatorearchitecture.com

CONSULTANTS:

REVISIONS:

DATE: DECEMBER 05, 2016

PROJECT No. 1638

DRAWN BY: JPF

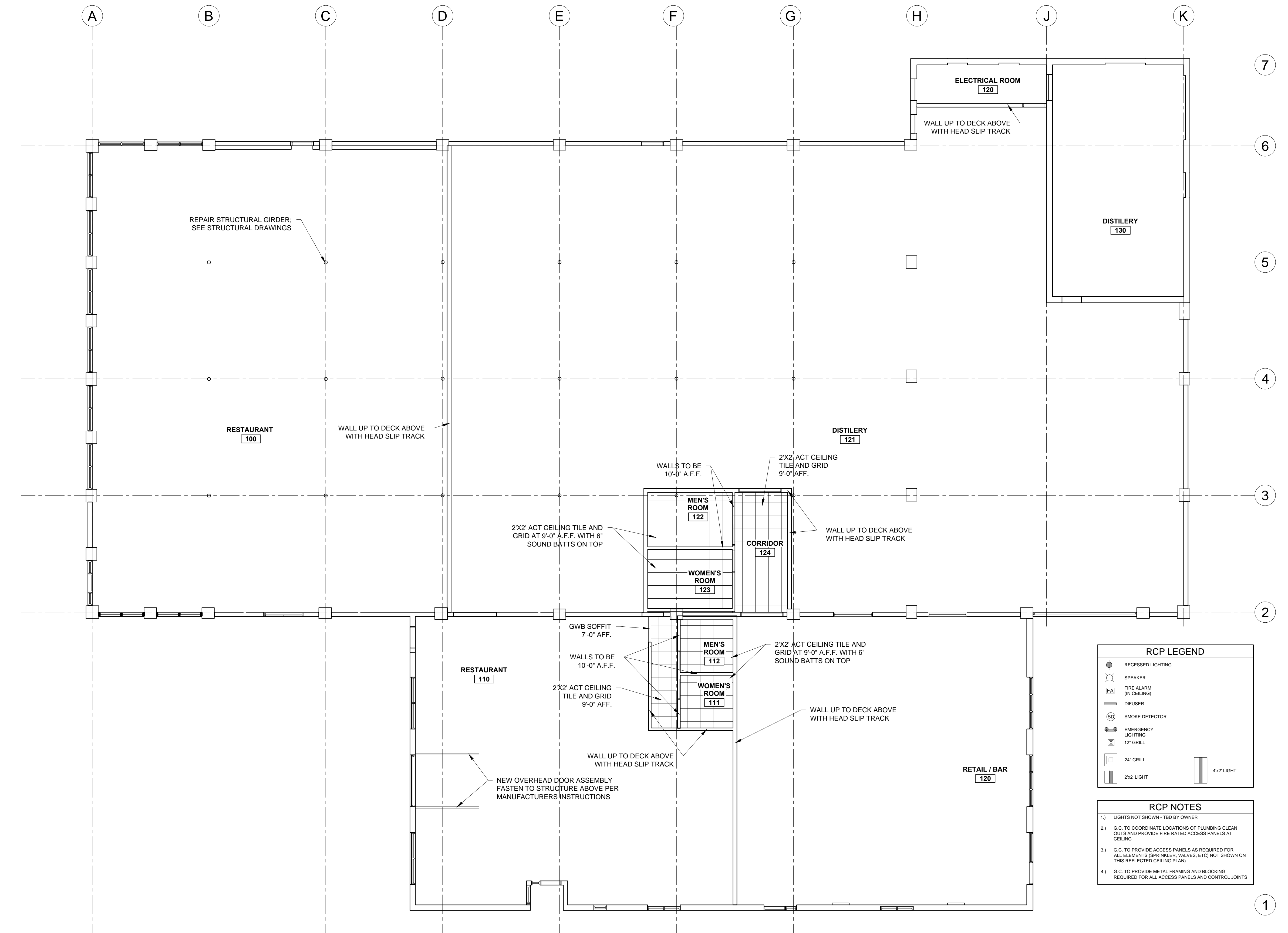
CHECKED BY: RJS

SCALE: AS NOTED

SHEET TITLE:

REFLECTED CEILING PLAN

A1-1



RCP LEGEND	
	RECESSED LIGHTING
	SPEAKER
	FIRE ALARM (IN CEILING)
	DIFFUSER
	SMOKE DETECTOR
	EMERGENCY LIGHTING
	12" GRILL
	24" GRILL
	2'X2' LIGHT
	4'X2' LIGHT

- | RCP NOTES | |
|-----------|--|
| 1.) | LIGHTS NOT SHOWN - TBD BY OWNER |
| 2.) | G.C. TO COORDINATE LOCATIONS OF PLUMBING CLEAN OUTS AND PROVIDE FIRE RATED ACCESS PANELS AT CEILING |
| 3.) | G.C. TO PROVIDE ACCESS PANELS AS REQUIRED FOR ALL ELEMENTS (SPRINKLER, VALVES, ETC) NOT SHOWN ON THIS REFLECTED CEILING PLAN |
| 4.) | G.C. TO PROVIDE METAL FRAMING AND BLOCKING REQUIRED FOR ALL ACCESS PANELS AND CONTROL JOINTS |

1 FIRST FLOOR - REFLECTED CEILING PLAN
1/8" = 1'-0"