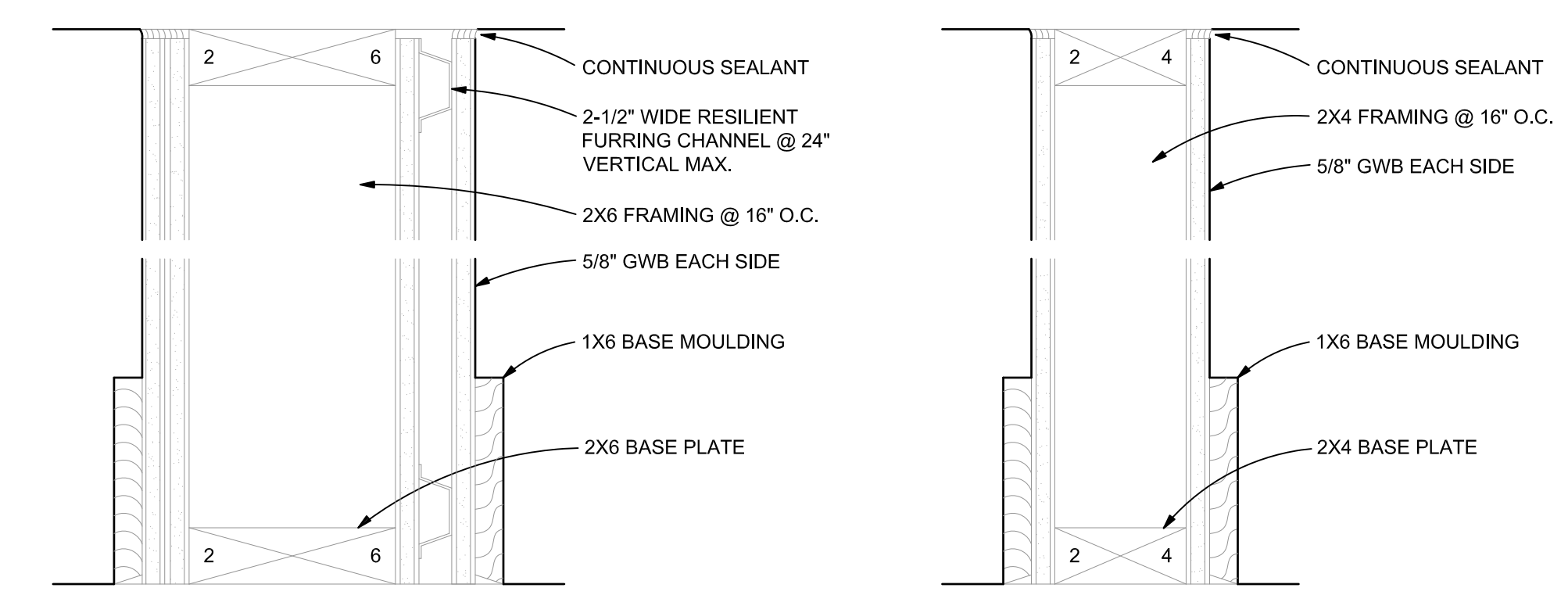


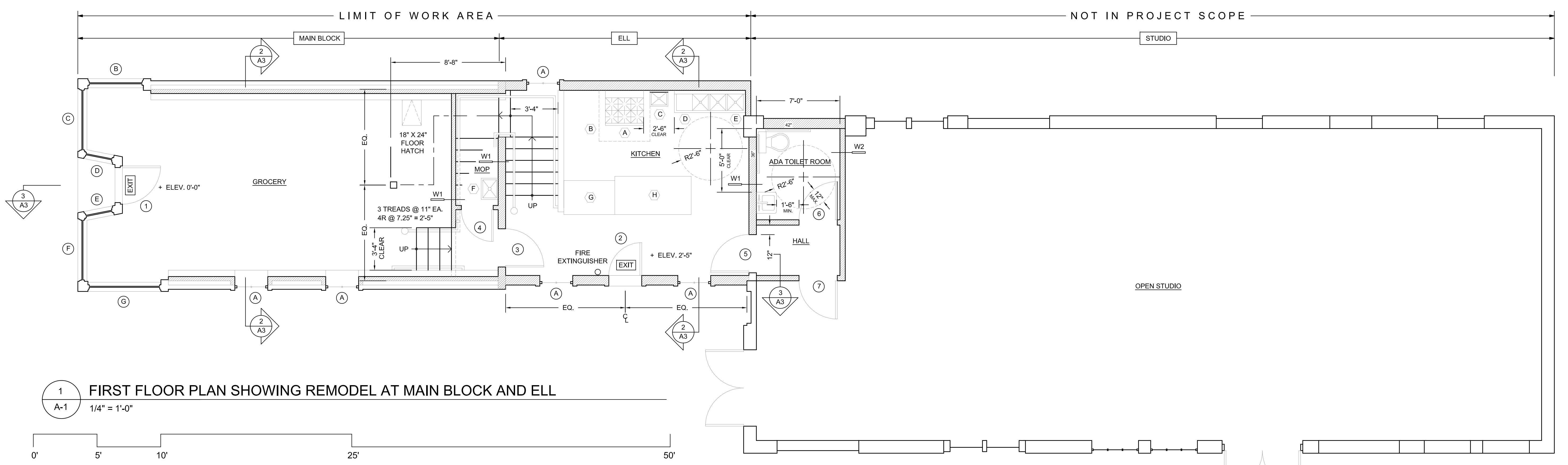
2 SECOND FLOOR PLAN SHOWING REMODEL AT MAIN BLOCK AND ROOF OF ELL
A-1 1/4" = 1'-0"

WALL TYPES 3" = 1'-0"



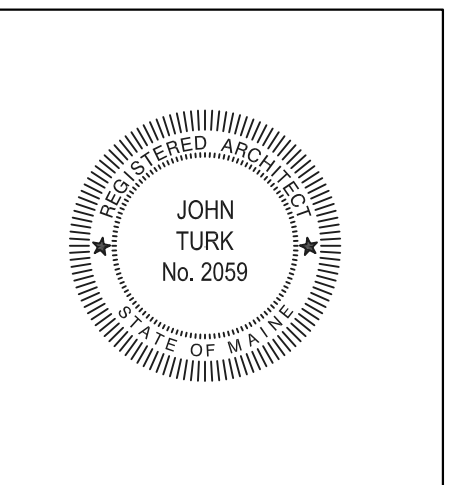
W1 UL #334 - 2 HOUR FIRE RATED ASSEMBLY
W2 NO RATING

- KITCHEN FIXTURE SCHEDULE**
- A RESERVED FOR POSSIBLE FUTURE RANGE
 - B RESERVED FOR POSSIBLE FUTURE FIRE RATED EXHAUST HOOD
 - C 17" X 15" STAINLESS STEEL HANDWASHING SINK
 - D 66.5" X 21" 3-BAY STAINLESS STEEL SINK
 - E SURFACE MOUNTED GREASE TRAP
 - F 16" X 20" FLOOR MOUNTED MOP SINK
 - G 32" X 48" PREP TABLE
 - H REFRIGERATOR



1 FIRST FLOOR PLAN SHOWING REMODEL AT MAIN BLOCK AND ELL
A-1 1/4" = 1'-0"

tll-architects, llc
28 DANFORTH STREET
SUITE 213
PORTLAND, MAINE 04101
TEL. 207.761.9662
FAX. 207.761.9696



Rehabilitation of the Main Block and Ell at
131 Washington Avenue
A&C Grocery
Portland, Maine

Date: 13 June 2016
Scale: As Shown
Revisions: 13 January 2017

Title:
Proposed
Floor Plans

Sheet No: **A-1**

BUILDER'S SET