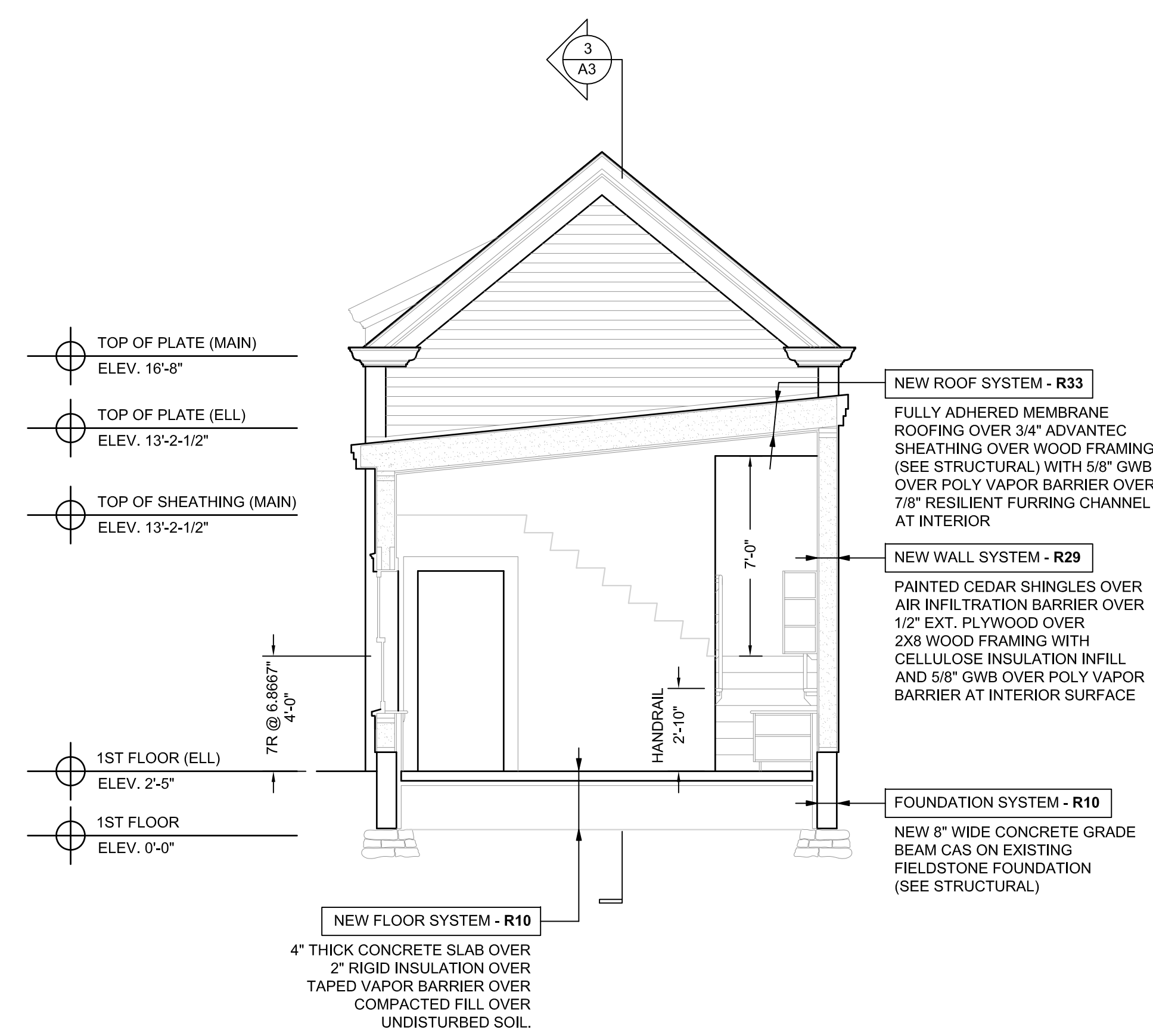
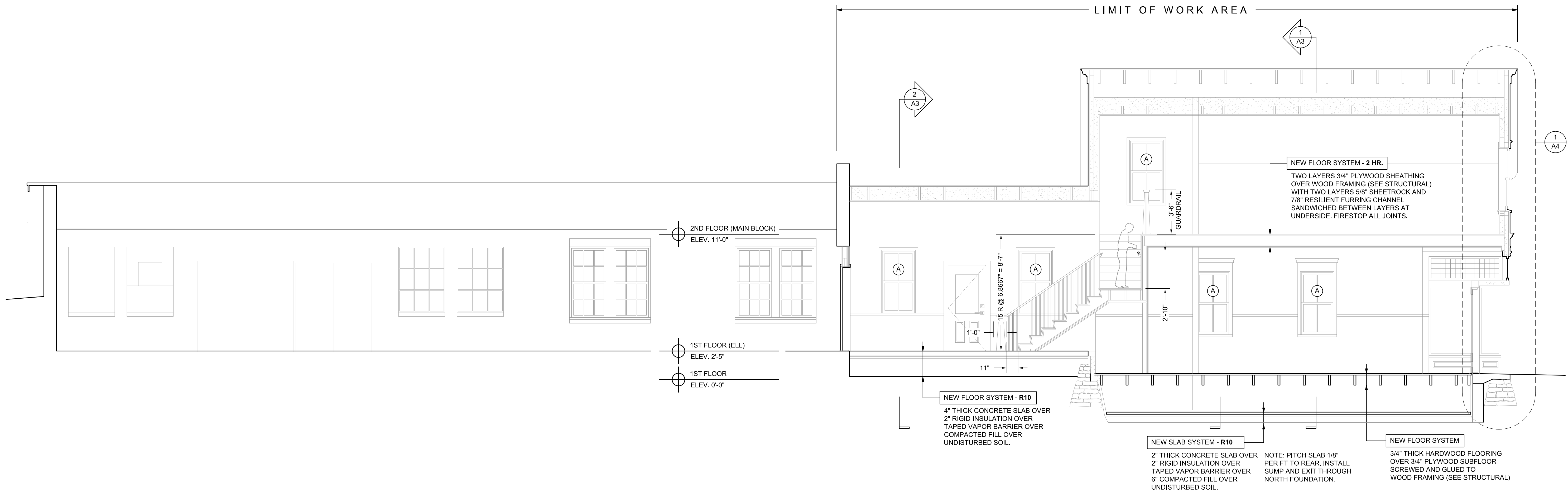


1 SECTION THROUGH MAIN BLOCK LOOKING EAST
 A-3 1/4" = 1'-0"



2 SECTION THROUGH SHOP LOOKING WEST
 A-3 1/4" = 1'-0"



3 LONGITUDINAL SECTION LOOKING SOUTH
 A-3 1/4" = 1'-0"

