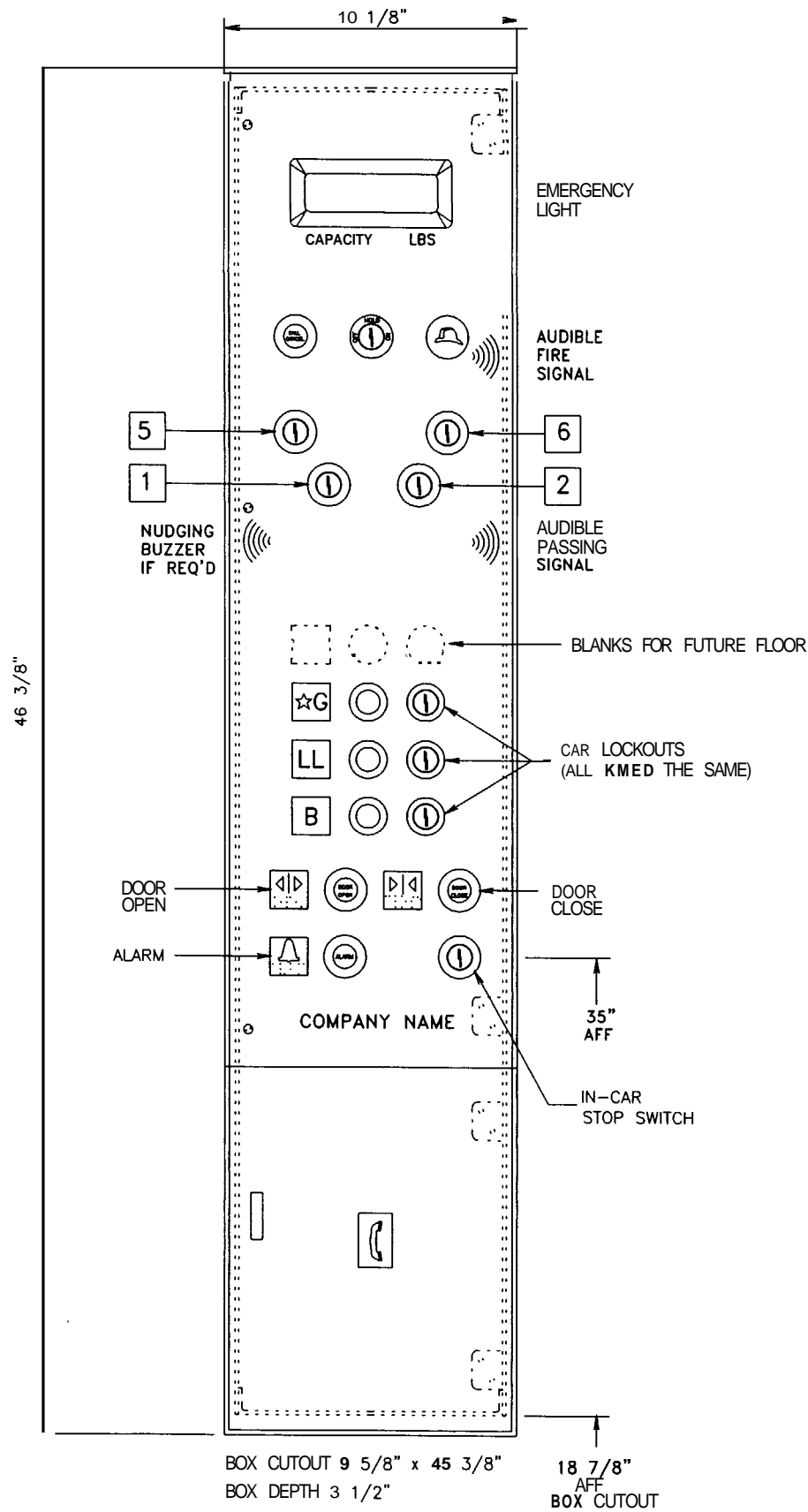


CAR OPERATING PANEL



BOX CUTOUT 9 5/8" x 45 3/8"
BOX DEPTH 3 1/2"

18 7/8" AFF
BOX CUTOUT

1046-TE C.O.P.

THIS DRAWING DEPICTS GENERAL DESIGN INTENT ONLY. ACTUAL AS-BUILT DETAILS MAY VARY.

VOLTAGE
 120V AC 48V AC OTHER: _____

COVER MATERIAL
 1/8" SATIN FINISH STAINLESS STEEL BRONZE

PUSH BUTTONS
 STANDARD RWB (WHITE BUTTON - BLACK HALO) VP (METAL BUTTON - CENTER ILLUMINATED)
 VANDAL RESISTANT

NUMBER OF OPENINGS 4

FLOOR MARKINGS B LL ☆G -

CIRCLE EGRESS (☆) FLOOR
 SINGLE COLUMN FOR UP TO 5 LANDINGS.
 DOUBLE COLUMN FOR 6 TO 10 LANDINGS.

KEY SWITCHES
 G.A.L. STANDARD CHICAGO MEDECO (VANDAL RESISTANT)

1 LIGHT 2 FAN (1 SP.) 3 OFF/LIGHT /FAN (1 SP.) 4 ELECTRICAL EYE IND. SERV. 5 KEY SWT.

6 ACCESS ON/OFF 7 DOOR HOLD 8 MASS EMT AND 9 "MEDICAL EMERGENCY" LIGHT 10 _____

CHOOSE UP TO 5 KEY SWITCHES.
 (A LIGHT-UP INDICATOR MAY BE SUBSTITUTED)

STOP SWITCH
 OTOGGLE PULL TO STOP KEY OPERATED

FIRE SERVICE
 \$1 REQ'D NOT REQ'D
 WHEN USED INCLUDES KEY SWITCH, JEWEL, AUDIBLE SIGNAL & CALL CANCEL P.B.
 \$1 ASME/ANSI FOR A17.1-2000 CODE
 SPECIAL KEY REQ'D FOR MAINE (YALE #3502)
 OTHER CODE REQUIREMENTS. PLEASE ADVISE _____

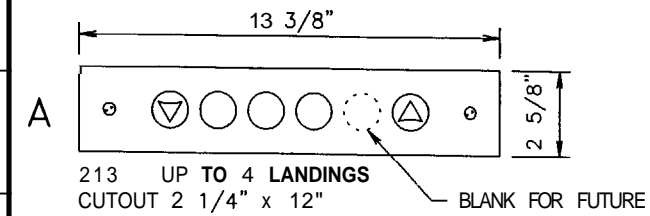
TELEPHONE
 PHONE COMPARTMENT (PHONE UNIT BY CANTON)
 G.A.L. HANDS FREE PHONE, INSIDE COMPARTMENT (INCLUDES PUSH TO CALL BUTTON & HELP IS ON THE WAY)
 G.A.L. HANDS FREE PHONE. COVER MOUNTED

ENGRAVING LOGO
 CAPACITY 2000# NAME PINE STATE ELEVATOR

HINGE AS SHOWN OPPOSITE

NUDGING BUZZER
 NOT REQ'D REQ'D

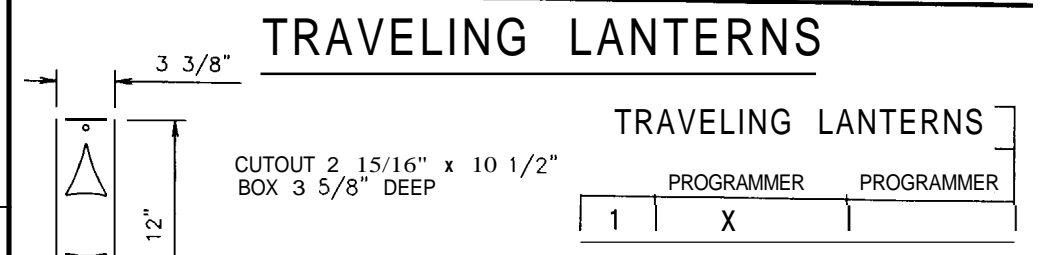
CAR POSITION INDICATORS



213 UP TO 4 LANDINGS
 CUTOUT 2 1/4" x 12" BLANK FOR FUTURE

CAR PC

QTY.	TYPE	w/o SIGNAL	FLOOR DESIGNATIONS
1	B		B LL G -



CANTON ELEVATOR

DETAIL **CAB FIXTURES**
 C.O.P.-10 LEVELS(MAX)/5 KEY SW's

**ROOT CELLAR
 PORTLAND, ME**

CONTRACT No. **11064** SHEET No. **1 OF 2**

No. OF C.O.P.'s 1

DATE	ewd	ORIGINAL
5-17-05		