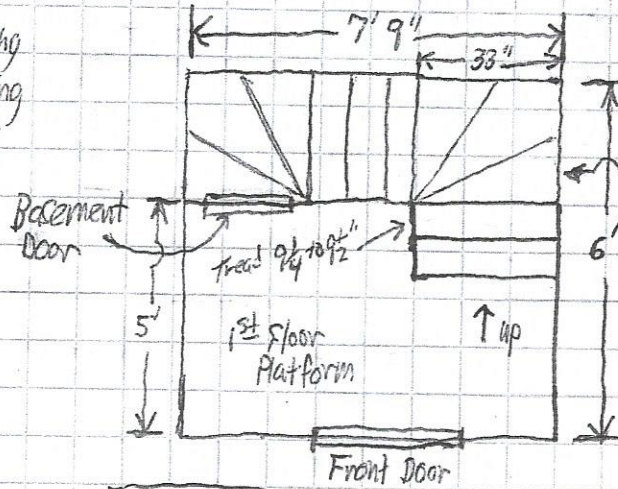
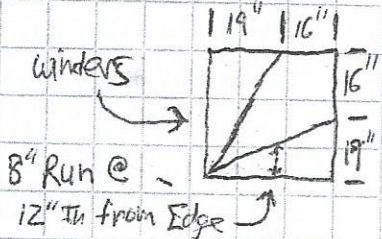


# 27 Green leaf St.

## Front Stair Detail First Floor to Second and Second to Third

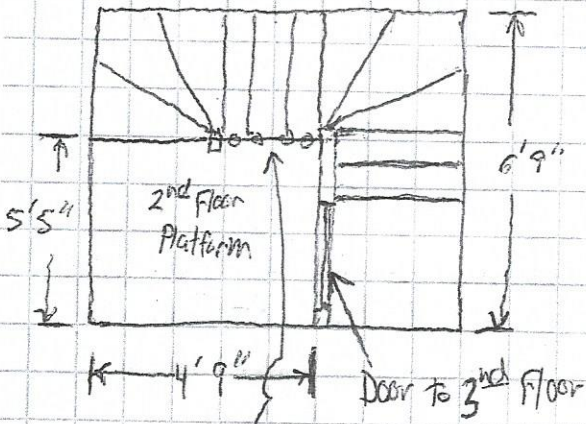
Note: We are Not changing Stair Structure at all. we are just Replacing Treads ~~to Remove~~ <sup>Lead Hazard</sup> to Remove

Tread:  $9\frac{1}{4}$  to  $9\frac{1}{2}$ " Run  $\rightarrow$  Existing  
 Rise:  $8\frac{1}{4}$  to  $8\frac{3}{4}$ " Rise  $\rightarrow$  Existing  
 Nose:  $5/8$ " to  $3/4$ "  $\rightarrow$  Existing

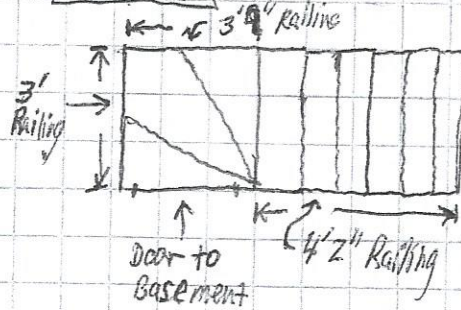


6 Treads  
 6 Winders  
 16' of Railing  
 @ 36" from  
 Nose of Tread  
 Height

### 2nd Floor Platform

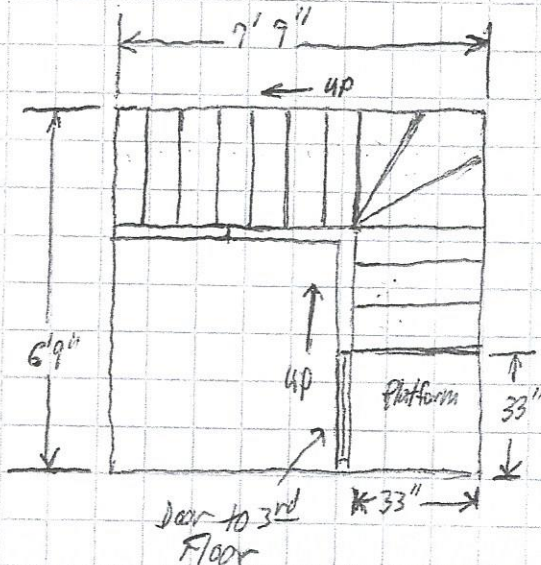


### Basement



Basement steps get Railing  
 only No Treads  
 11' of Railing total  
 @ 36" Height from the  
 Nose edge of Step

### 2nd Floor Platform to 3rd Floor



16' of Handrailing  
 36" Height from  
 Nose edge of Tread  
 and New Treads  
 only

\* Note: Railing Guard for  
 Platform is  $2'2\frac{1}{2}$ " Long  
 and 31" High existing  
 we will remove and make  
 it 42" High

Scale  $\frac{1}{4}" = 1'$