

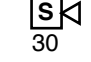
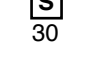


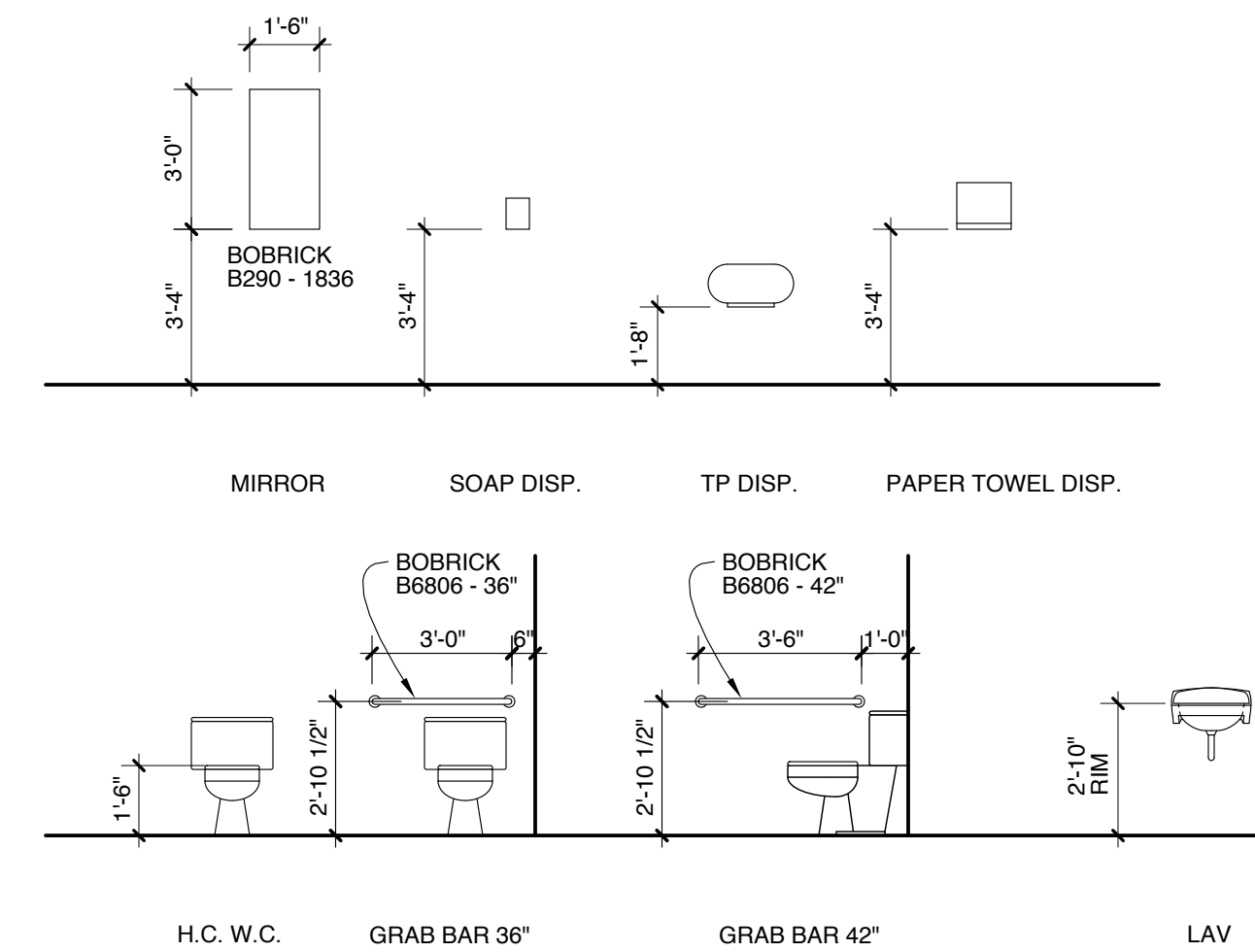
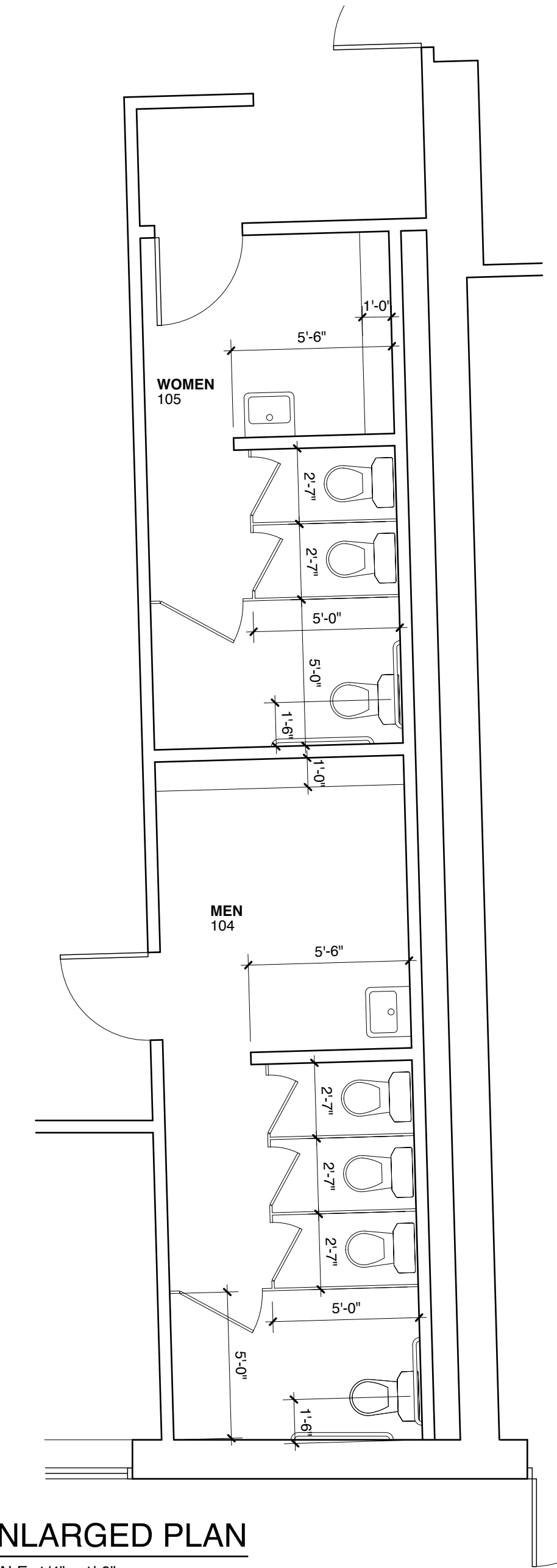


**1 FLOOR PLAN**  
SCALE: 1/8" = 1'-0"  
2' 4' 8' 16'

**LIFE SAFETY LEGENE**

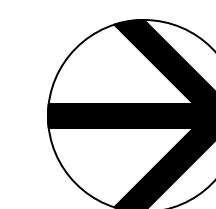
-  EMERGENCY LIGHT
-  EXIT SIGN
-  HORN STROBE - NUMBER INDICATES CANDELA RATING
-  STROBE - NUMBER INDICATES CANDELA RATING
-  FIRE ALARM PULL STATION
-  FIRE EXTINGUISHER 10# DRY CHEMICAL TYPE

**2 ENLARGED PLAN**  
SCALE: 1/4" = 1'-0"  
1' 2' 4' 8'



**3 BATHROOM FIXTURE MOUNTING HEIGHTS**  
SCALE: 1/4" = 1'-0"  
3' 6' 1' 2'

- FIXTURE AND ACCESSORY NOTES:**
1. PROVIDE SOLID WOOD BLOCKING IN WALL FOR MOUNTING OF ALL WALL-MOUNTED ITEMS.



**Title**

LIFE SAFETY  
PLAN AND  
DETAILS

**Scale:** AS NOTED

**Date:** 6/30/11

**Revisions**

**Sheet**

**A2**