

98 WASHINGTON AVE
 98 1st Floor Proposed
 (office in rear, food service in front)

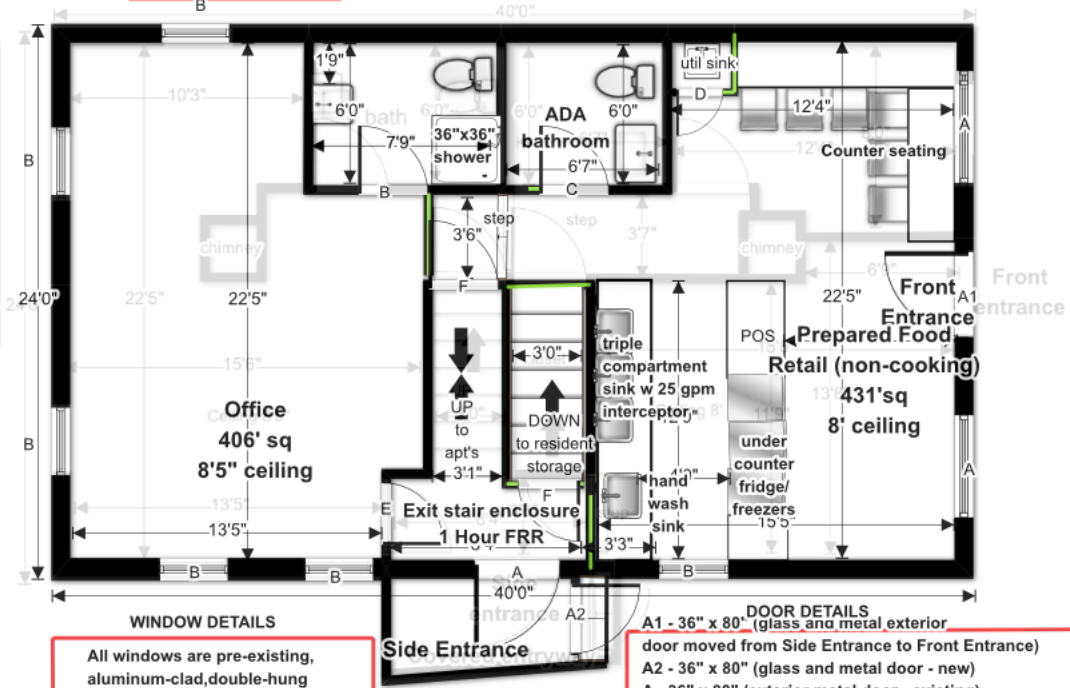
Mount Joy LLC
 49 Merrill Street
 Portland, ME 04101
 8.27.15

LEGEND

-  existing wall
-  removed wall
-  new wall

STAIR DETAIL

- Stair Details (1st to 2nd fl)
- 8 3/4" tread
- 8 7/8" rise
- Headroom
- 87" at bottom
- 88" midway
- 87" at top
- Stair Details (1st to Bsmt)
- see details on Basement Plan



WINDOW DETAILS

- All windows are pre-existing, aluminum-clad, double-hung
- A - 42" x 54"
- B - 28" x 54"

DOOR DETAILS

- A1 - 36" x 80" (glass and metal exterior door moved from Side Entrance to Front Entrance)
- A2 - 36" x 80" (glass and metal door - new)
- A - 36" x 80" (exterior metal door - existing)
- B - 32" x 80" (solid pine 6-panel - existing)
- C - 36" x 80" (hollow core - new)
- D - 24" x 80" (hollow core - new)
- E - 32" x 80" 1 hour FRR (existing)
- F - 32" x 80" 1 hour FRR (new)

