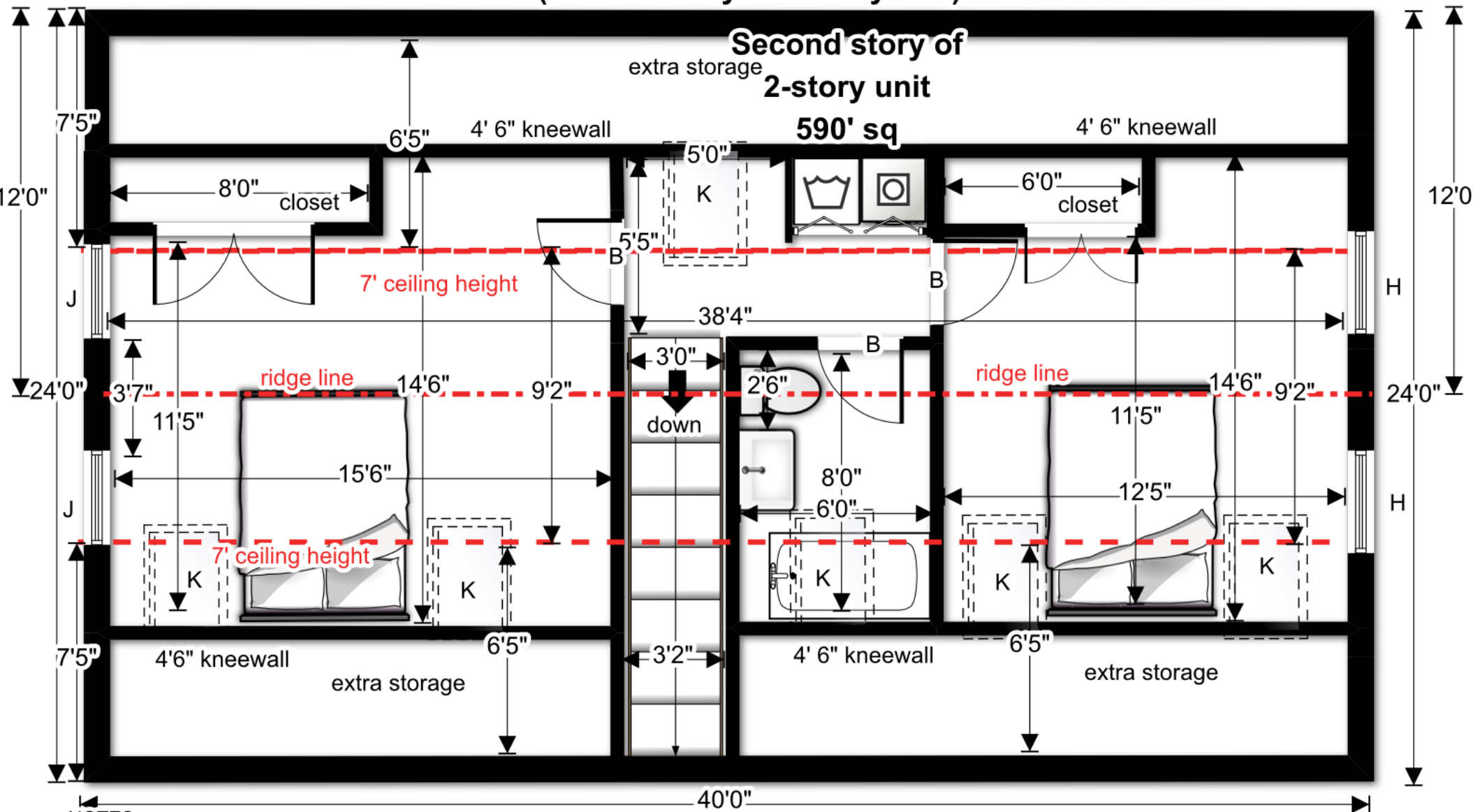


Windows:
 H 29" x 54.5"
 J 26" x 43"
 K 31" x 46" skylight

Doors
 B 32" x 80"

98 Washington Ave
4th Floor Proposed
(second story of 2-story unit)

Mount Joy LLC
 49 Merrill Street
 Portland, ME 04101



NOTES:

- reinforce rafters
- install 6 skylights (bathroom skylight achieves 7' clearance beneath showerhead)
- remove wall dividing small front rooms to create larger bedroom
- raise knee walls and add closets

