

98 WASHINGTON AVE

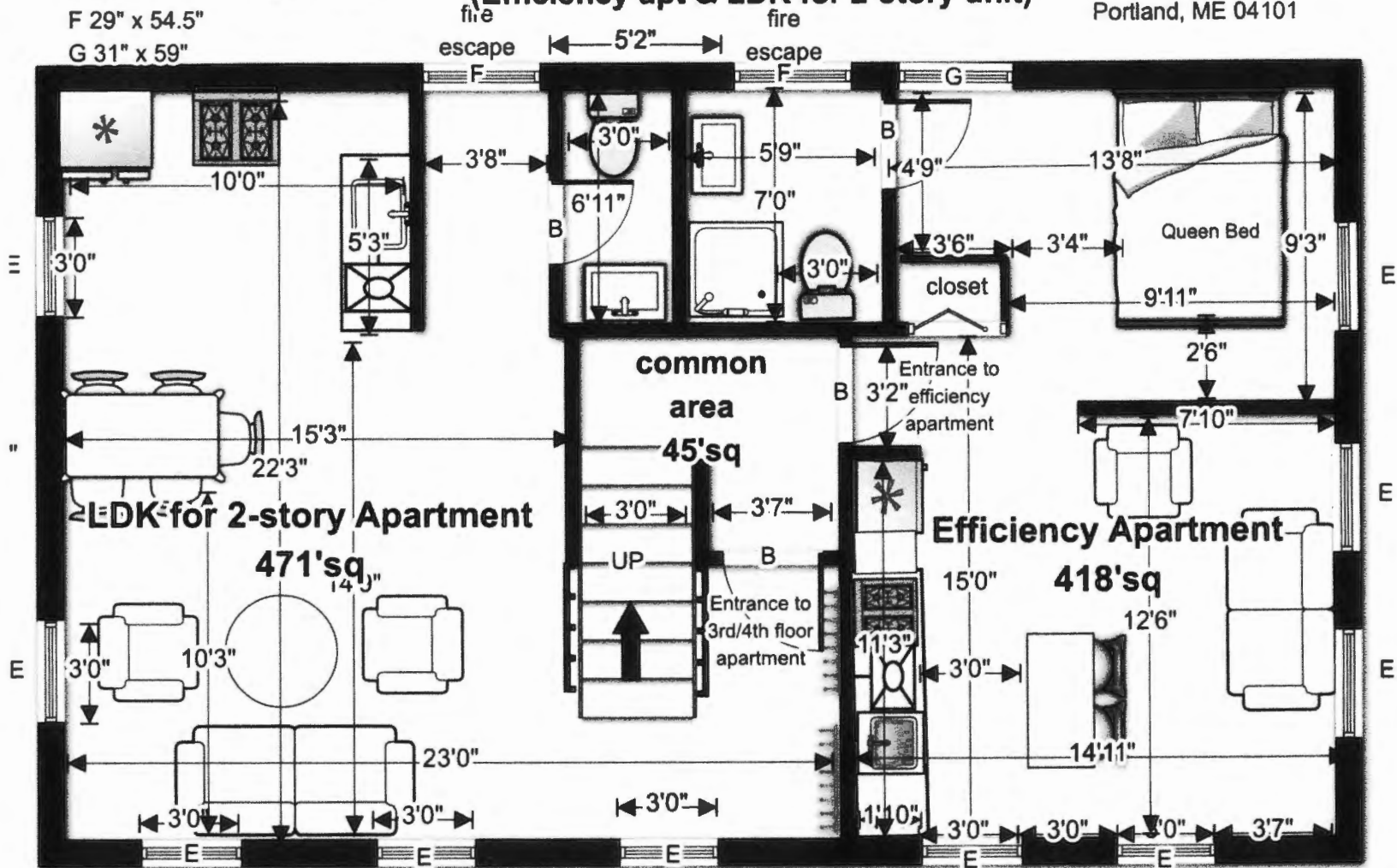
3rd Floor Proposed

(Efficiency apt & LDK for 2-story unit)

Mount Joy LLC  
49 Merrill Street  
Portland, ME 04101

Windows:  
E 28.5" x 54.5"  
F 29" x 54.5"  
G 31" x 59"

Doors:  
B 32" x 80"



NOTES on LDK:

- ∴ entrance to have fire rated transom window
- remove walls and install banister on lower stairs

NOTES on efficiency:

- 27" fridge
- 24" range
- 22' sink
- 24" DW

