

RECEIVED  
 MAY 12 2012  
 Dept. of Building Inspections  
 City of Portland, Maine

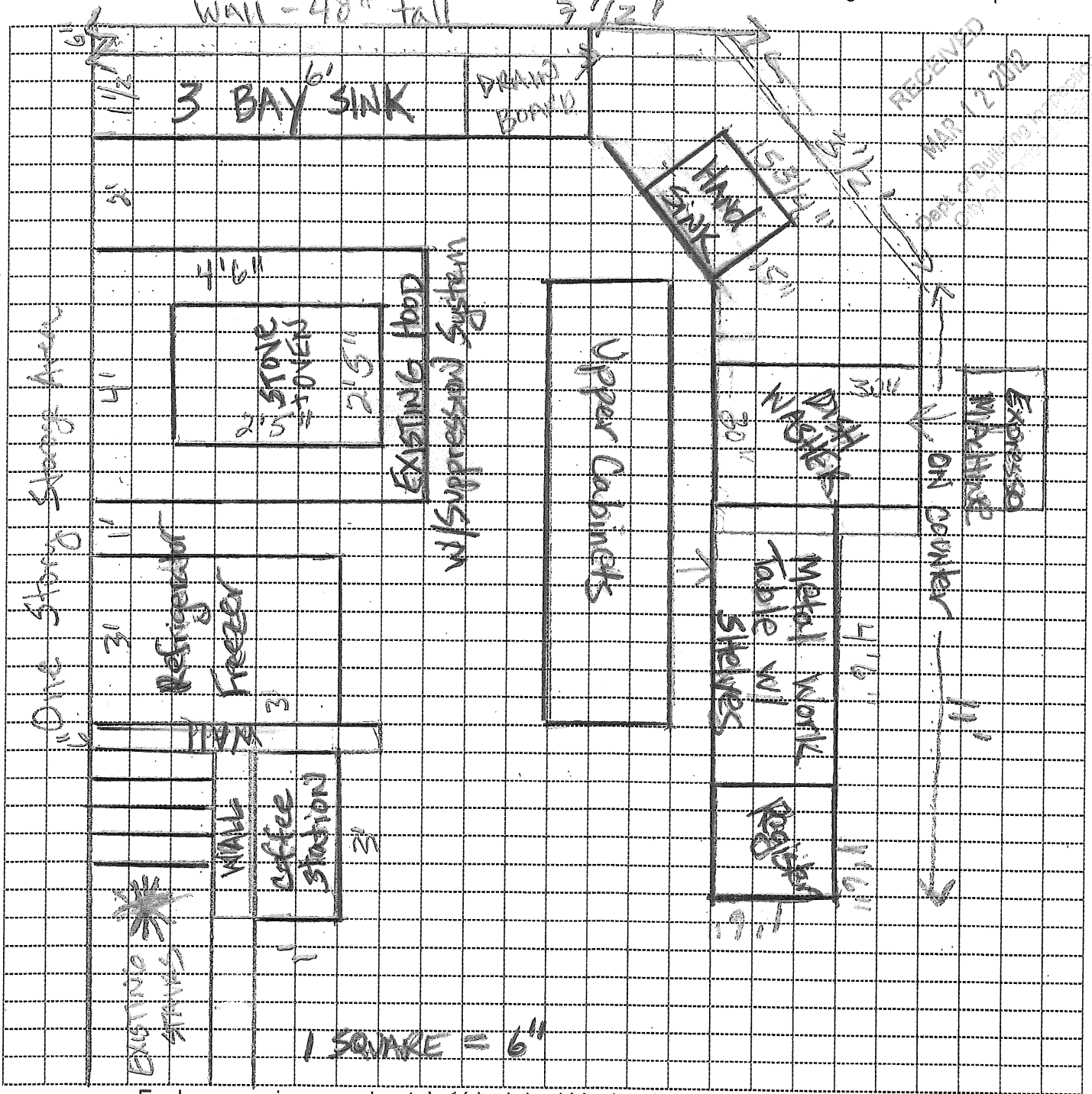
Scale: 1/8"=1'  
 10/5/11

Portland Pottery #1  
 Proposed Layout

122 Washington Ave  
 Portland, ME

# PORTLAND POTTERY CAFE AREA DETAIL

Use this grid to draw a floor plan including square footage, or provide an engineered floor plan.



Each square is approximately 1/4 inch by 1/4 inch. Please include square Footage.

Floor plan should include the following items:

WASHINGTON AVE

Sinks:	Toilet Facilities:	Refrigeration:	Facilities:
1. Hand Washing	1. Water Closets	1. Walk-in Coolers	1. Food Preparation Areas
2. Ware Washing	2. Lavatories	2. Walk-in Freezers	2. Food Storage Areas
3. Utility	3. Urinals	3. Freestanding Coolers	3. Trash/Refuse/Redemption Areas
4. Food Prep	4. Other	4. Freestanding Freezers	4. Dining Areas
5. Dipper Wells		5. Other	5. Break Rooms/Office
6. Other			6. Equipment/Counters/Seats/Tables
			7. Dry Storage/All Other Storage