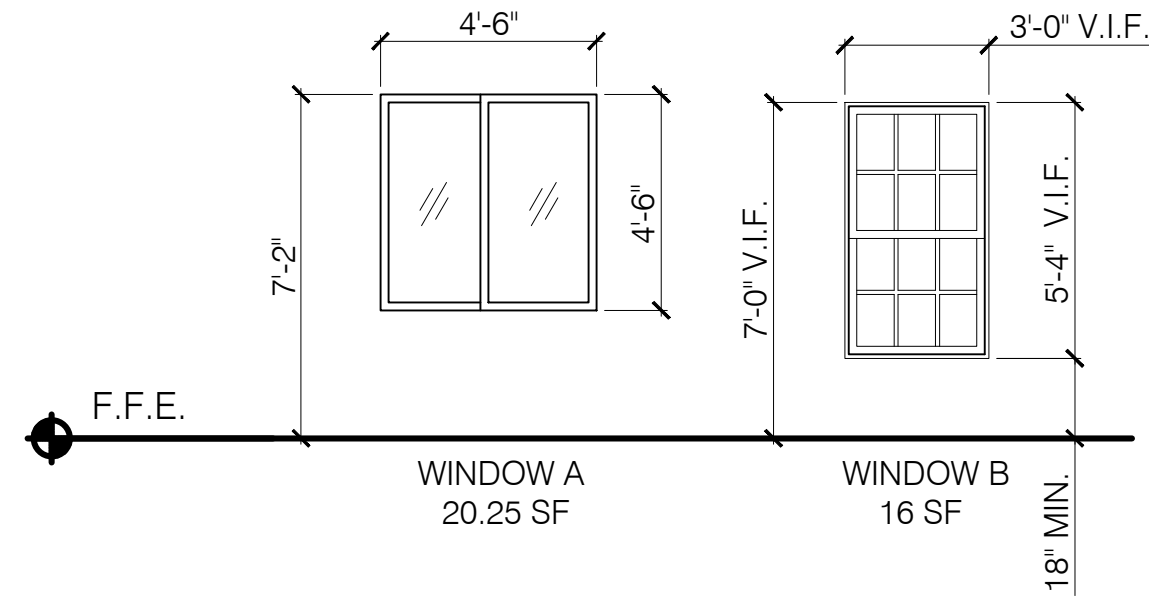


WINDOW SCHEDULE				
TYPE	SIZE (ROUGH OPENING)	MATERIAL	OPERATION	NOTES
A	4'-6" X 4'-6"	ALUMINUM	SLIDING (SERVICE WINDOW)	1
B	3'-0" X 5'-4"	ALUMINUM CLAD WOOD	DOUBLE HUNG	1, 2

NOTES:
 1. WINDOW TO BE THERMALLY BROKEN.
 2. VERIFY EXISTING ROUGH OPENING IN FIELD.

WINDOW SCHEDULE NOTES:

- WINDOW TO BE THERMALLY BROKEN.
- VERIFY EXISTING ROUGH OPENING IN FIELD.



WINDOW SPECIFICATIONS:

- Size and window configuration. See Window Schedule
- Color options. Bronze Preferred
- Factory Mulling Capability. Preferred
- Design Pressure Rating. 25
- U Factor. 0.35 or lower
- Material. See Window Schedule
- Glazing Type. Triple glazing Preferred (best financial value for the lowest U-factor)
- Hardware type. Brushed nickel
- Exterior Washing Capability. Washing from interior preferred
- Warranty (Window & glazing units). 10 years
- Insect Screens. Standard Insect Screens

DOOR SCHEDULE									
DOOR #	FROM	TO	SIZE	DOOR MATERIAL	DOOR TYPE	DOOR RATING	FRAME	HARDWARE SET	NOTES
101	RETAIL	OUTSIDE	3'-0" X 7'-2"	ALUMINUM	I	-	ALUMINUM	02	
102	APARTMENT	OUTSIDE	2'-4" X 6'-10"	STEEL	II	-	HM	01	1

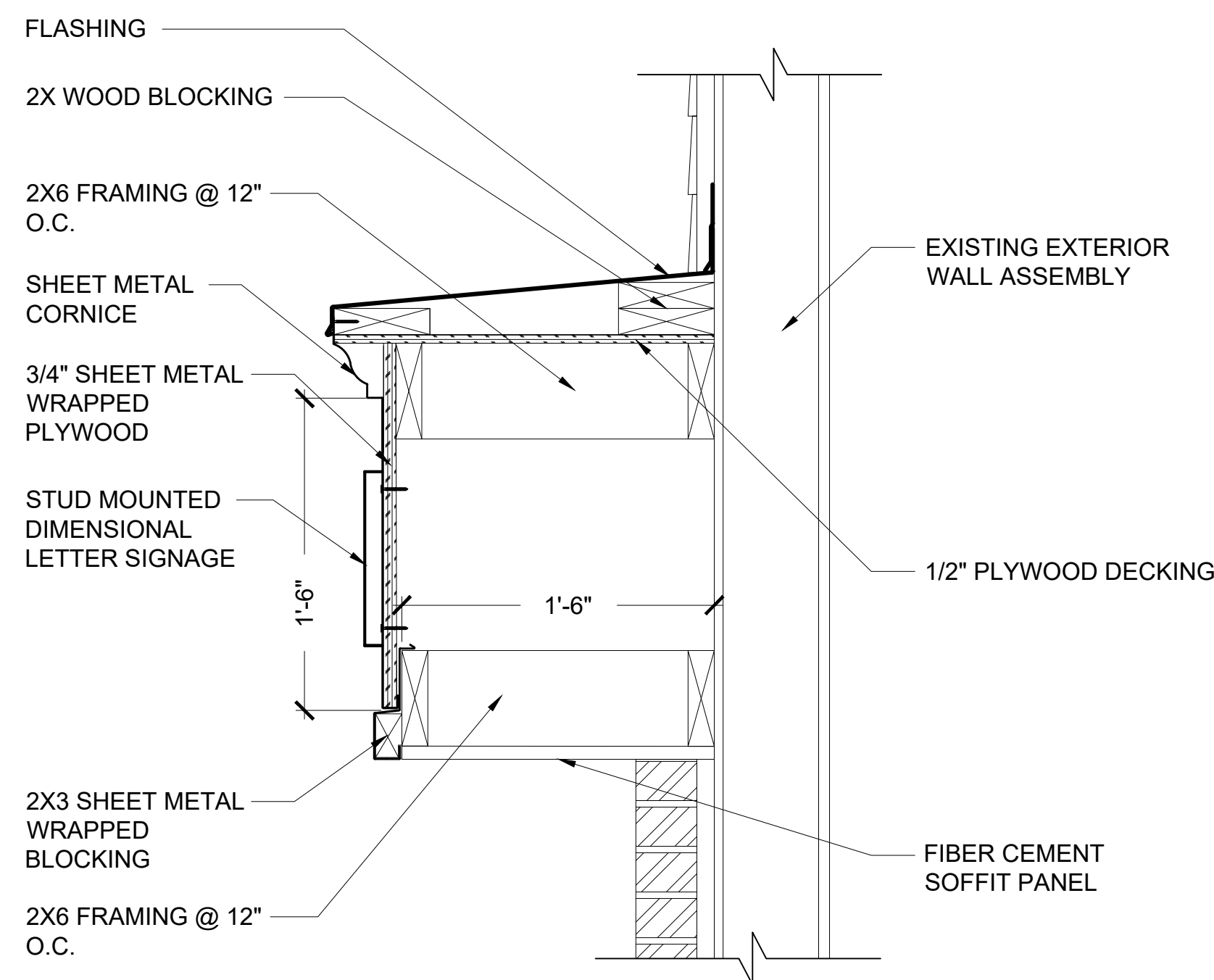
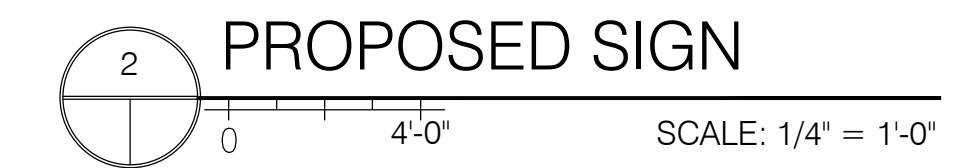
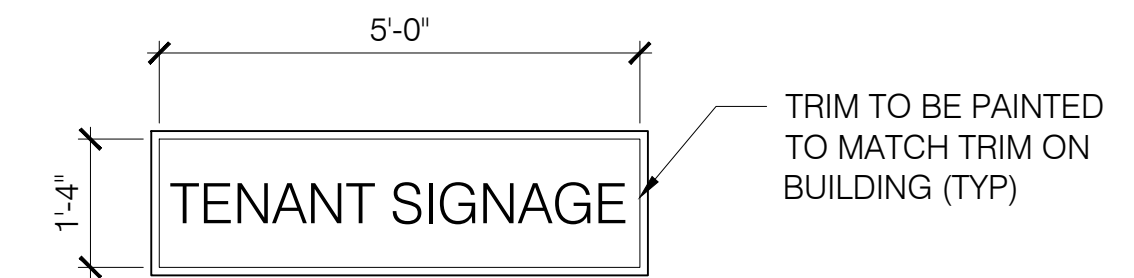
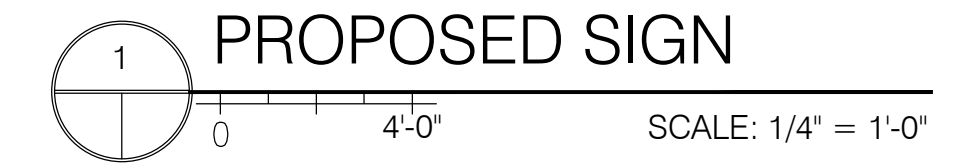
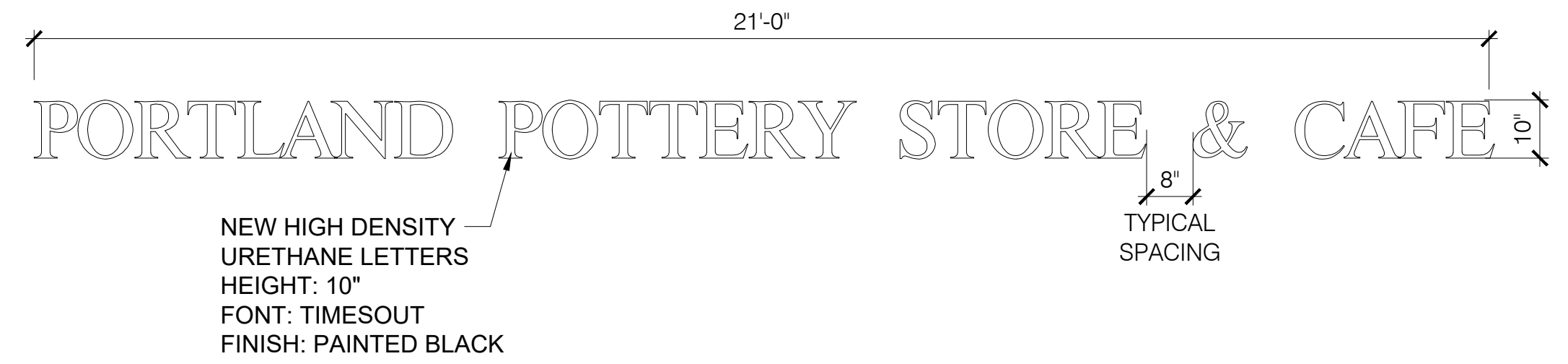
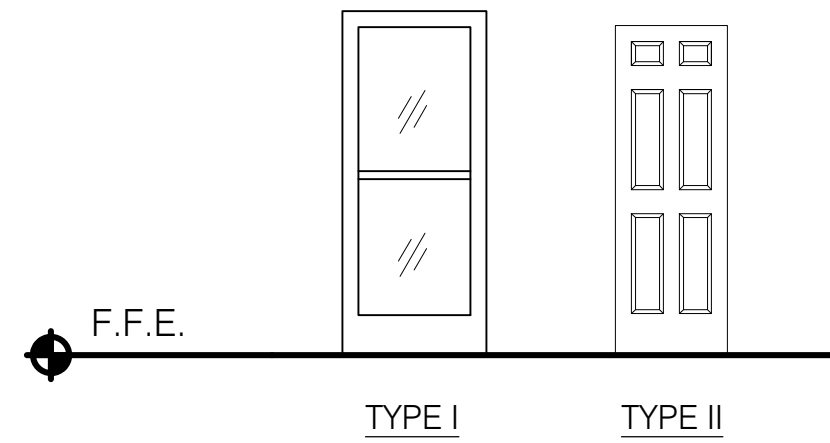
NOTES:
 1. FIELD VERIFY SIZE OF EXISTING DOOR OPENING.

GENERAL DOOR SCHEDULE NOTES:

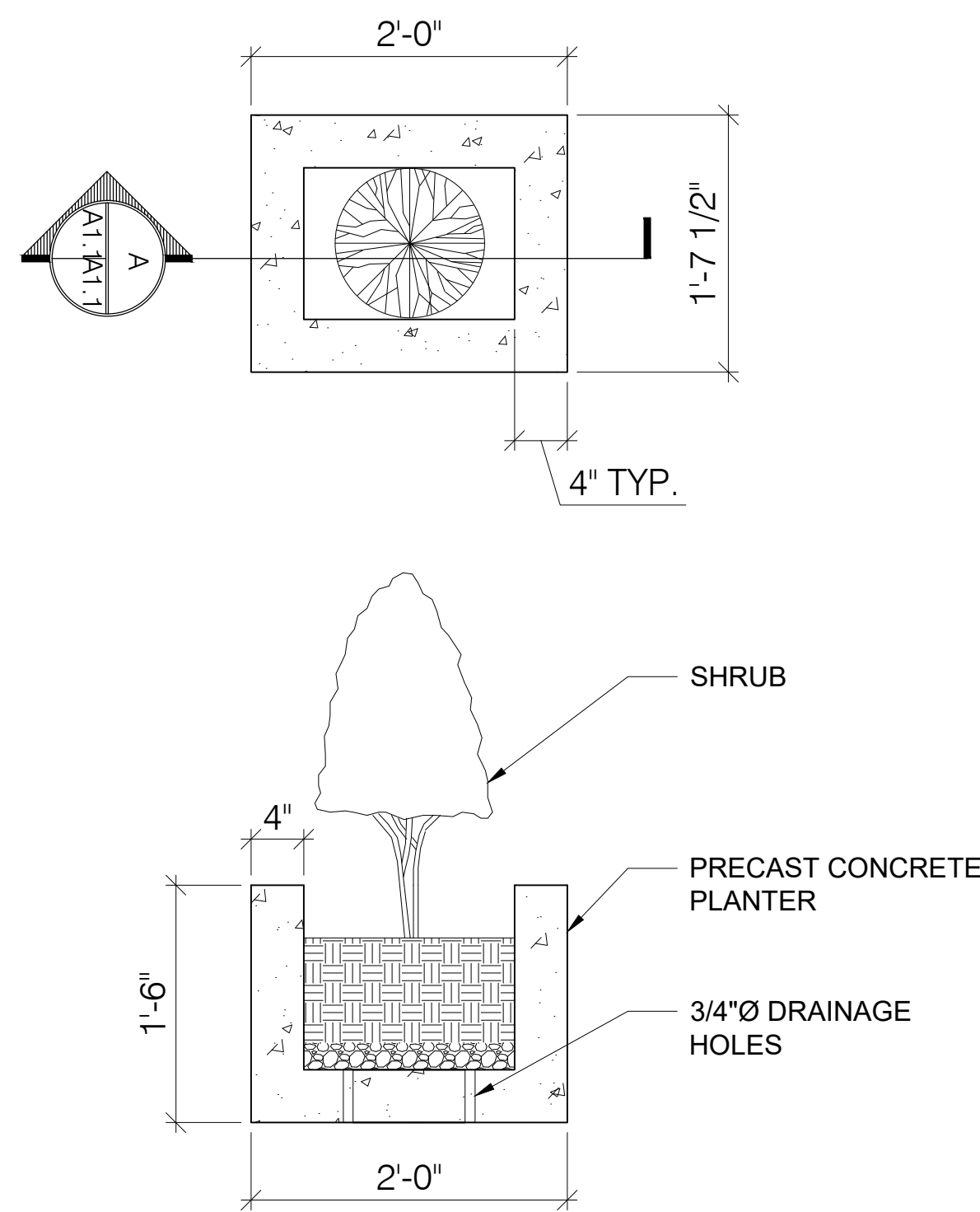
- ALL DOOR HARDWARE AND ACCESSORIES TO BE ADA COMPLIANT.
- COORDINATE DOOR HARDWARE FINISHES AND DESIGNS WITH OWNER.
- GLAZING TO BE TEMPERED SAFETY GLASS.

HARDWARE SETS:

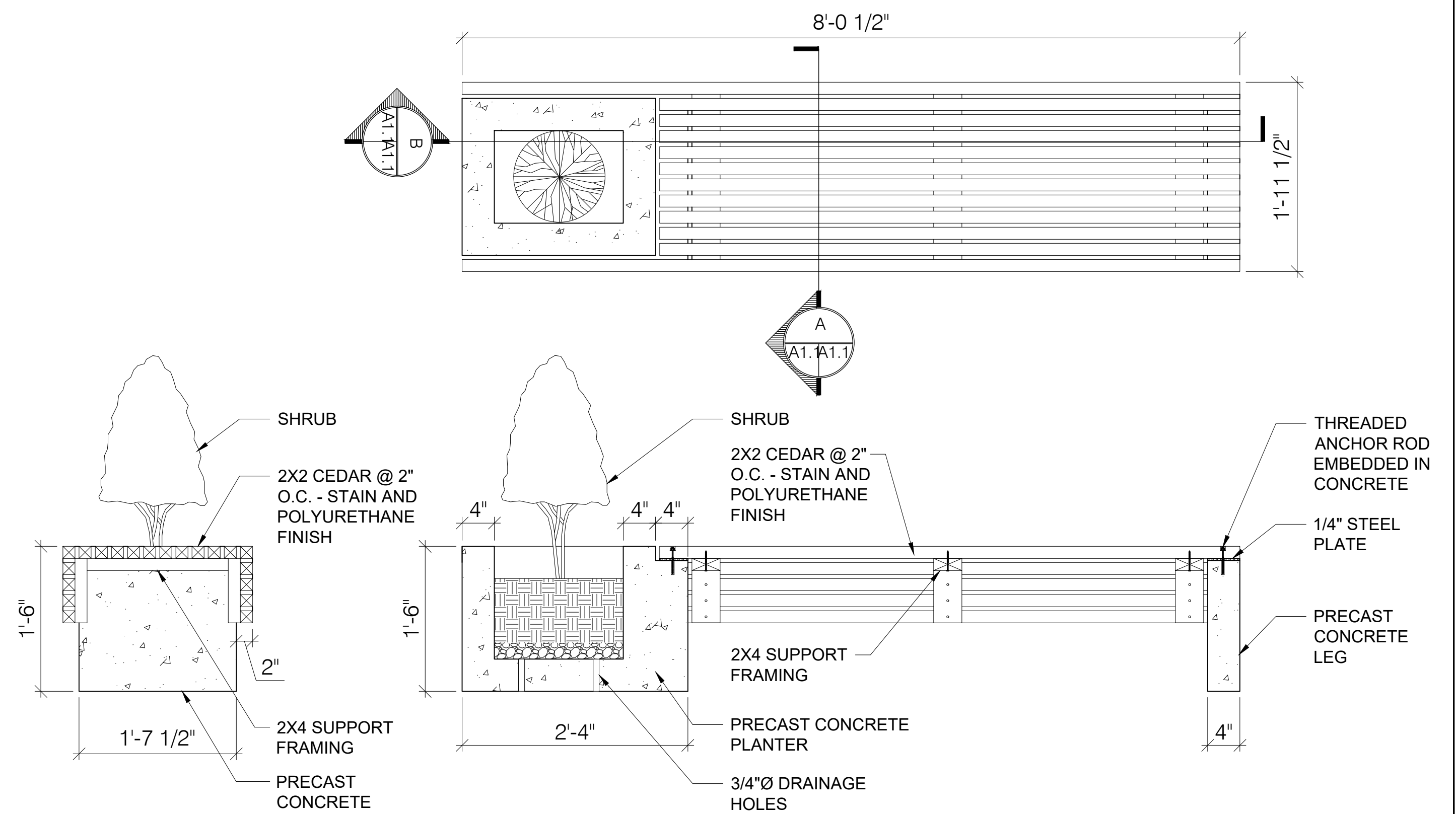
- 01 UNIT ENTRY DOORS: PEEP HOLE, (3) HINGES, SOFT CLOSE DAMPER, STRIKE, DOOR STOP, SINGLE CYLINDER DEADBOLT, LOCKSET, THROW-BOLT, LATCH ASSEMBLY, LEVER, CLOSER, DOOR CHIME
- 02 EXIT DOOR: (3) CLEAR OFFSET HINGES, CLOSER, STRIKE, LATCH ASSEMBLY, LOCKSET, ADA THRESHOLD, DOOR PULL, PANIC BAR EXIT



3 CORNICE DETAIL
SCALE: 1 1/2" = 1'-0"



4 PLANTER DETAIL
SCALE: 1" = 1'-0"



5 BENCH DETAIL
SCALE: 1" = 1'-0"