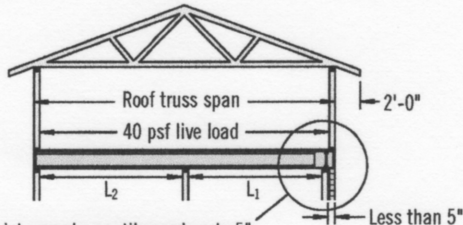


## Cantilevers Less than 5" (Brick Ledge)

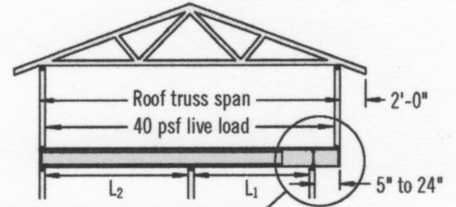
See Section A of cantilever table on page 11



- TJI® joists may be cantilevered up to 5" when supporting roof load, assuming:
- simple or continuous span
  - $L_1 \leq L_2$
  - minimum backspan = 2x cantilever length

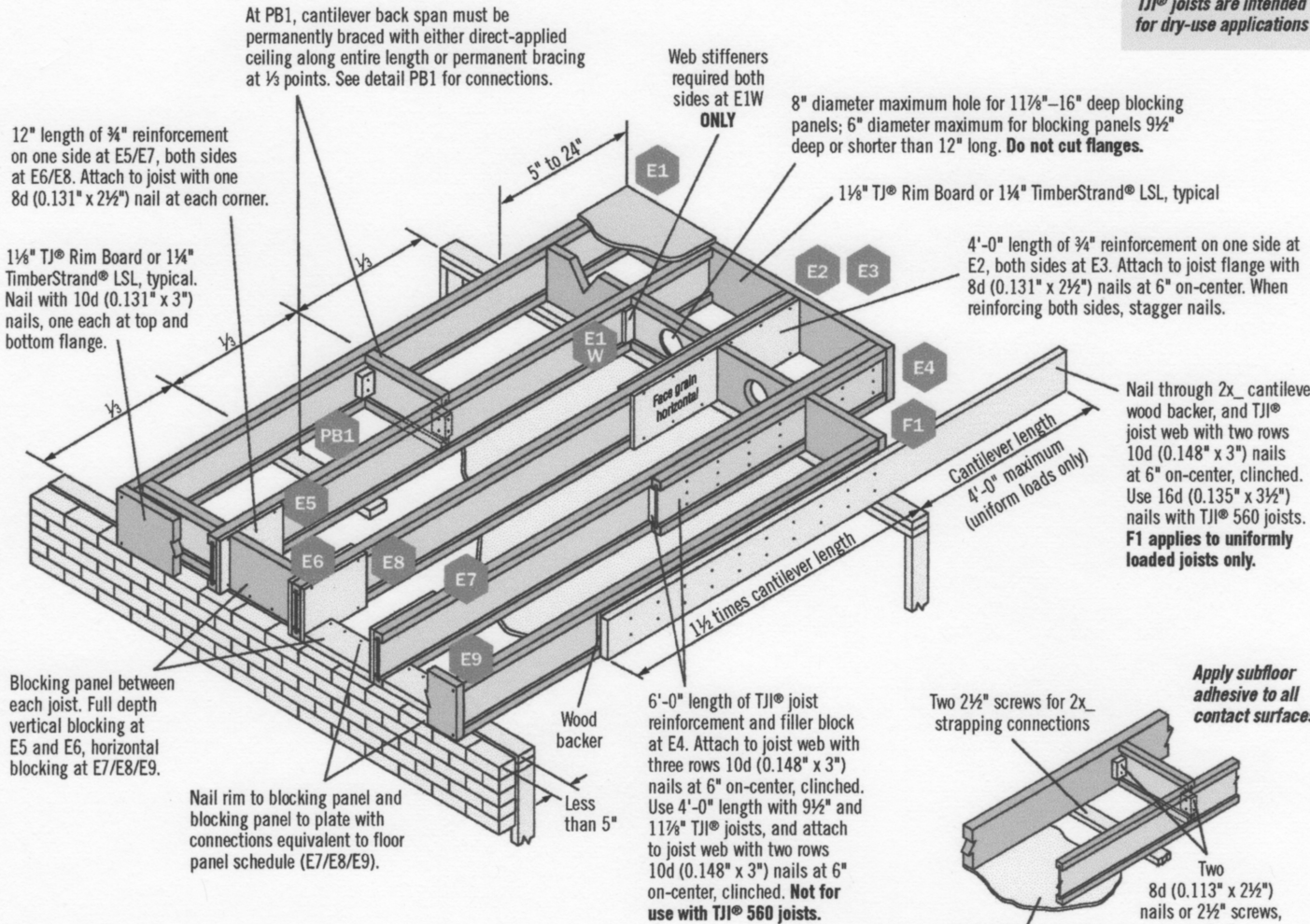
## Cantilevers 5" to 24"

See Section B of cantilever table on page 11



- TJI® joists may be cantilevered 5" to 24" when supporting roof load, assuming:
- simple or continuous span
  - $L_1 \leq L_2$
  - minimum backspan = 2x cantilever length

**TJI® joists are intended for dry-use applications**

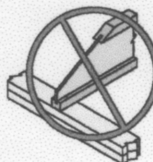


**PB1** When specified on the layout, one of the above bracing options is required

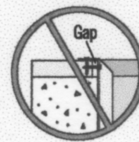
### These Conditions are **NOT** Permitted:



**DO NOT** use sawn lumber for rim board or blocking as it may shrink after installation. Use only engineered lumber



**DO NOT** bevel cut joist beyond inside face of wall.



**DO NOT** install hanger overhanging face of plate or beam. Flush bearing plate with inside face of wall or beam.