

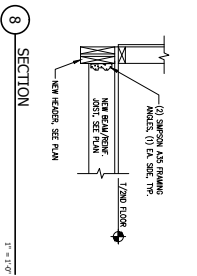
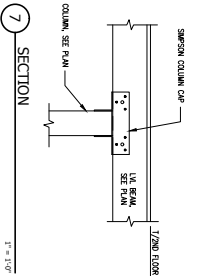
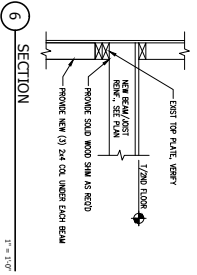
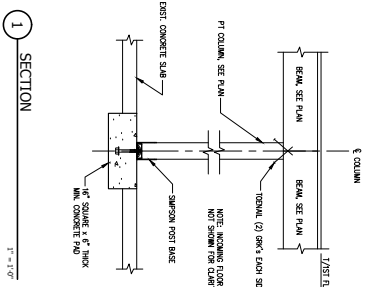
**GENERAL NOTES**

1. REFER TO ARCHITECTURAL PLANS FOR DIMENSIONS NOT SHOWN. REFER TO MECHANICAL, ELECTRICAL, AND APPOINTMENT PLANS FOR SIZES AND LOCATIONS OF WALL AND SLAB OPENINGS, SLOTTED JOISTS, OR OTHERS ON THE DRAWINGS. THE FINISHER SHALL BE NOTIFIED PRIOR TO CONSTRUCTION.
2. EXISTING DIMENSIONS AND CONDITIONS ARE FOR REFERENCE ONLY. CONSTRUCTION SHALL VERIFY ALL DIMENSIONS AND CONDITIONS PRIOR TO CONSTRUCTION. VERIFY DIMENSIONS AND CONDITIONS PRIOR TO CONSTRUCTION. VERIFY DIMENSIONS AND CONDITIONS PRIOR TO CONSTRUCTION.
3. THE CONTRACTOR SHALL VERIFY THE DIMENSIONS, FINISHES AND CONDITIONS ARE REFERRED TO THE CONTRACT DOCUMENTS. VERIFY DIMENSIONS AND CONDITIONS PRIOR TO CONSTRUCTION. VERIFY DIMENSIONS AND CONDITIONS PRIOR TO CONSTRUCTION.
4. THE CONTRACTOR SHALL VERIFY THE DIMENSIONS, FINISHES AND CONDITIONS ARE REFERRED TO THE CONTRACT DOCUMENTS. VERIFY DIMENSIONS AND CONDITIONS PRIOR TO CONSTRUCTION. VERIFY DIMENSIONS AND CONDITIONS PRIOR TO CONSTRUCTION.
5. THE CONTRACTOR SHALL VERIFY THE DIMENSIONS, FINISHES AND CONDITIONS ARE REFERRED TO THE CONTRACT DOCUMENTS. VERIFY DIMENSIONS AND CONDITIONS PRIOR TO CONSTRUCTION. VERIFY DIMENSIONS AND CONDITIONS PRIOR TO CONSTRUCTION.
6. THE CONTRACTOR SHALL VERIFY THE DIMENSIONS, FINISHES AND CONDITIONS ARE REFERRED TO THE CONTRACT DOCUMENTS. VERIFY DIMENSIONS AND CONDITIONS PRIOR TO CONSTRUCTION. VERIFY DIMENSIONS AND CONDITIONS PRIOR TO CONSTRUCTION.
7. REFER TO THE PROJECT SPECIFICATIONS FOR MATERIAL, MANUFACTURE AND INSTALLATION INFORMATION NOT COVERED IN THESE NOTES (WHERE APPLICABLE).

**GENERAL NOTES**

1. BUILDING CODES: ALL BUILDING CODES SHALL BE THE LATEST EDITIONS OF THE INTERNATIONAL BUILDING CODE (IBC) AND OTHER APPLICABLE CODES. VERIFY DIMENSIONS AND CONDITIONS PRIOR TO CONSTRUCTION. VERIFY DIMENSIONS AND CONDITIONS PRIOR TO CONSTRUCTION.
2. LIFE LOADS: ALL LIFE LOADS SHALL BE AS SPECIFIED IN THE IBC. VERIFY DIMENSIONS AND CONDITIONS PRIOR TO CONSTRUCTION. VERIFY DIMENSIONS AND CONDITIONS PRIOR TO CONSTRUCTION.
3. SNOW LOADS: ALL SNOW LOADS SHALL BE AS SPECIFIED IN THE IBC. VERIFY DIMENSIONS AND CONDITIONS PRIOR TO CONSTRUCTION. VERIFY DIMENSIONS AND CONDITIONS PRIOR TO CONSTRUCTION.
4. WIND LOADS: ALL WIND LOADS SHALL BE AS SPECIFIED IN THE IBC. VERIFY DIMENSIONS AND CONDITIONS PRIOR TO CONSTRUCTION. VERIFY DIMENSIONS AND CONDITIONS PRIOR TO CONSTRUCTION.
5. SEISMIC LOADS: ALL SEISMIC LOADS SHALL BE AS SPECIFIED IN THE IBC. VERIFY DIMENSIONS AND CONDITIONS PRIOR TO CONSTRUCTION. VERIFY DIMENSIONS AND CONDITIONS PRIOR TO CONSTRUCTION.
6. THE CONTRACTOR SHALL VERIFY THE DIMENSIONS, FINISHES AND CONDITIONS ARE REFERRED TO THE CONTRACT DOCUMENTS. VERIFY DIMENSIONS AND CONDITIONS PRIOR TO CONSTRUCTION. VERIFY DIMENSIONS AND CONDITIONS PRIOR TO CONSTRUCTION.
7. THE CONTRACTOR SHALL VERIFY THE DIMENSIONS, FINISHES AND CONDITIONS ARE REFERRED TO THE CONTRACT DOCUMENTS. VERIFY DIMENSIONS AND CONDITIONS PRIOR TO CONSTRUCTION. VERIFY DIMENSIONS AND CONDITIONS PRIOR TO CONSTRUCTION.
8. THE CONTRACTOR SHALL VERIFY THE DIMENSIONS, FINISHES AND CONDITIONS ARE REFERRED TO THE CONTRACT DOCUMENTS. VERIFY DIMENSIONS AND CONDITIONS PRIOR TO CONSTRUCTION. VERIFY DIMENSIONS AND CONDITIONS PRIOR TO CONSTRUCTION.
9. THE CONTRACTOR SHALL VERIFY THE DIMENSIONS, FINISHES AND CONDITIONS ARE REFERRED TO THE CONTRACT DOCUMENTS. VERIFY DIMENSIONS AND CONDITIONS PRIOR TO CONSTRUCTION. VERIFY DIMENSIONS AND CONDITIONS PRIOR TO CONSTRUCTION.
10. THE CONTRACTOR SHALL VERIFY THE DIMENSIONS, FINISHES AND CONDITIONS ARE REFERRED TO THE CONTRACT DOCUMENTS. VERIFY DIMENSIONS AND CONDITIONS PRIOR TO CONSTRUCTION. VERIFY DIMENSIONS AND CONDITIONS PRIOR TO CONSTRUCTION.
11. THE CONTRACTOR SHALL VERIFY THE DIMENSIONS, FINISHES AND CONDITIONS ARE REFERRED TO THE CONTRACT DOCUMENTS. VERIFY DIMENSIONS AND CONDITIONS PRIOR TO CONSTRUCTION. VERIFY DIMENSIONS AND CONDITIONS PRIOR TO CONSTRUCTION.
12. THE CONTRACTOR SHALL VERIFY THE DIMENSIONS, FINISHES AND CONDITIONS ARE REFERRED TO THE CONTRACT DOCUMENTS. VERIFY DIMENSIONS AND CONDITIONS PRIOR TO CONSTRUCTION. VERIFY DIMENSIONS AND CONDITIONS PRIOR TO CONSTRUCTION.
13. THE CONTRACTOR SHALL VERIFY THE DIMENSIONS, FINISHES AND CONDITIONS ARE REFERRED TO THE CONTRACT DOCUMENTS. VERIFY DIMENSIONS AND CONDITIONS PRIOR TO CONSTRUCTION. VERIFY DIMENSIONS AND CONDITIONS PRIOR TO CONSTRUCTION.
14. THE CONTRACTOR SHALL VERIFY THE DIMENSIONS, FINISHES AND CONDITIONS ARE REFERRED TO THE CONTRACT DOCUMENTS. VERIFY DIMENSIONS AND CONDITIONS PRIOR TO CONSTRUCTION. VERIFY DIMENSIONS AND CONDITIONS PRIOR TO CONSTRUCTION.
15. THE CONTRACTOR SHALL VERIFY THE DIMENSIONS, FINISHES AND CONDITIONS ARE REFERRED TO THE CONTRACT DOCUMENTS. VERIFY DIMENSIONS AND CONDITIONS PRIOR TO CONSTRUCTION. VERIFY DIMENSIONS AND CONDITIONS PRIOR TO CONSTRUCTION.
16. UNLESS NOTED ON DRAWINGS, FILL OUT DIMENSIONS FOR SPACED JOISTS OF REMOVED BAYS.

**A STRUCTURAL NOTES**



**CONCRETE NOTES**

1. ALL WORK SHALL CONFORM TO RC 2009 REVISIONS OF THE BUILDING CODE REQUIREMENTS FOR CONSTRUCTION MATERIAL AND TEST METHODS. VERIFY DIMENSIONS AND CONDITIONS PRIOR TO CONSTRUCTION. VERIFY DIMENSIONS AND CONDITIONS PRIOR TO CONSTRUCTION.
2. REINFORCED CONCRETE (PART 05 20) AND SPECIFICATIONS FOR STRUCTURAL CONCRETE (PART 05 20) SHALL BE USED TO DETERMINE THE FOLLOWING:
 

LOCATION	MIN. W/C RATIO	f <sub>c</sub>	WATER-REDUCING ADJUTANT
INT. WALLS/SLABS	50	3000 PSI	25 ± 1%*
FOUNDATION WALLS	45	4200 PSI	6 ± 1%*
INT. SLAB-ON-GRADE	45	4200 PSI	25 ± 1%*
EXT. SLAB-ON-GRADE	45	4200 PSI	6 ± 1%*
3. MAXIMUM AGGREGATE SIZE SHALL BE 3/4" IN CONFORMANCE WITH ASTM C33.
4. COLDWATER OR ADMIXTURES CONTAINING COLDWATER IS NOT PERMITTED.
5. MAXIMUM SLUMP AFTER THE ACTION OF A WATER-REDUCING ADJUTANT IS 9 INCHES.
6. CONCRETE SHALL NOT PLACED CONCRETE ON FRESH CONCRETE OR ON WET, ADJUTANT EQUIPMENT SHALL BE KEPT OFF CONCRETE UNTIL IT IS FULLY SET. VERIFY DIMENSIONS AND CONDITIONS PRIOR TO CONSTRUCTION. VERIFY DIMENSIONS AND CONDITIONS PRIOR TO CONSTRUCTION.
7. REINFORCING BARS SHALL BE PLACED IN CONTACT WITH PRESSURE TREATED LUMBER.
8. REINFORCING BARS SHALL BE PLACED IN CONTACT WITH PRESSURE TREATED LUMBER.
9. REINFORCING BARS SHALL BE PLACED IN CONTACT WITH PRESSURE TREATED LUMBER.
10. REINFORCING BARS SHALL BE PLACED IN CONTACT WITH PRESSURE TREATED LUMBER.
11. REINFORCING BARS SHALL BE PLACED IN CONTACT WITH PRESSURE TREATED LUMBER.
12. REINFORCING BARS SHALL BE PLACED IN CONTACT WITH PRESSURE TREATED LUMBER.
13. REINFORCING BARS SHALL BE PLACED IN CONTACT WITH PRESSURE TREATED LUMBER.
14. REINFORCING BARS SHALL BE PLACED IN CONTACT WITH PRESSURE TREATED LUMBER.
15. REINFORCING BARS SHALL BE PLACED IN CONTACT WITH PRESSURE TREATED LUMBER.
16. UNLESS NOTED ON DRAWINGS, FILL OUT DIMENSIONS FOR SPACED JOISTS OF REMOVED BAYS.

**WOOD NOTES**

1. ALL WOOD SHALL BE IN ACCORDANCE WITH RC 2009 REVISIONS OF THE IBC. VERIFY DIMENSIONS AND CONDITIONS PRIOR TO CONSTRUCTION. VERIFY DIMENSIONS AND CONDITIONS PRIOR TO CONSTRUCTION.
2. ALL FRAMING SHALL BE SPECIFIED: S-P-F, K-2 OR BETTER GRADE AND HAVE A MINIMUM MOISTURE CONTENT OF 19%.
3. ALL WOOD IN CONTACT WITH MASONRY OR CONCRETE OR EXPOSED TO WEATHER SHALL BE PRESSURE TREATED.
4. WOOD SHALL BE TREATED IN ACCORDANCE WITH THE FOLLOWING:
 

MINIMUM ALLOWABLE STRESS	TREATMENT
f <sub>v</sub> = 2000 PSI	f <sub>c</sub> = 2000 PSI (PARALLEL TO GRAIN)
f <sub>t</sub> = 2000 PSI	f <sub>c</sub> = 2000 PSI (PERPENDICULAR TO GRAIN)
f <sub>t</sub> = 2000 PSI	f <sub>c</sub> = 2000 PSI (PERPENDICULAR TO GRAIN)
f <sub>t</sub> = 2000 PSI	f <sub>c</sub> = 2000 PSI (PERPENDICULAR TO GRAIN)
5. WOOD SHALL BE TREATED IN ACCORDANCE WITH THE FOLLOWING:
 

MINIMUM ALLOWABLE STRESS	TREATMENT
f <sub>v</sub> = 2000 PSI	f <sub>c</sub> = 2000 PSI (PARALLEL TO GRAIN)
f <sub>t</sub> = 2000 PSI	f <sub>c</sub> = 2000 PSI (PERPENDICULAR TO GRAIN)
f <sub>t</sub> = 2000 PSI	f <sub>c</sub> = 2000 PSI (PERPENDICULAR TO GRAIN)
f <sub>t</sub> = 2000 PSI	f <sub>c</sub> = 2000 PSI (PERPENDICULAR TO GRAIN)
6. ALL DIMENSIONED LUMBER SHALL BE EXPOSED TO WEATHER SHALL BE KAYMAZED.
7. ALL FLOOR SHEATHING SHALL BE 3/4" THICK AND GRADE, QUAD AND NATED TO FLOOR FRAMING WITH 6" MIN. SPACING AT 16" O.C. AT SUPPORTED PANEL EDGES, 12" O.C. AT INTERMEDIATE SUPPORTS UNLESS NOTED OTHERWISE ON DRAWINGS.
8. WOOD SHALL BE TREATED IN ACCORDANCE WITH THE FOLLOWING:
 

MINIMUM ALLOWABLE STRESS	TREATMENT
f <sub>v</sub> = 2000 PSI	f <sub>c</sub> = 2000 PSI (PARALLEL TO GRAIN)
f <sub>t</sub> = 2000 PSI	f <sub>c</sub> = 2000 PSI (PERPENDICULAR TO GRAIN)
f <sub>t</sub> = 2000 PSI	f <sub>c</sub> = 2000 PSI (PERPENDICULAR TO GRAIN)
f <sub>t</sub> = 2000 PSI	f <sub>c</sub> = 2000 PSI (PERPENDICULAR TO GRAIN)
9. SHEATHING SHALL BE DIMENSIONED WITH LONG DIMENSION PERPENDICULAR TO THE SUPPORTS AND BE SPACED TO PROVIDE A MINIMUM OF 1/4" CLEARANCE BETWEEN SHEATHING AND SUPPORTS. VERIFY DIMENSIONS AND CONDITIONS PRIOR TO CONSTRUCTION. VERIFY DIMENSIONS AND CONDITIONS PRIOR TO CONSTRUCTION.
10. SHEATHING SHALL BE DIMENSIONED WITH LONG DIMENSION PERPENDICULAR TO THE SUPPORTS AND BE SPACED TO PROVIDE A MINIMUM OF 1/4" CLEARANCE BETWEEN SHEATHING AND SUPPORTS. VERIFY DIMENSIONS AND CONDITIONS PRIOR TO CONSTRUCTION. VERIFY DIMENSIONS AND CONDITIONS PRIOR TO CONSTRUCTION.
11. SHEATHING SHALL BE DIMENSIONED WITH LONG DIMENSION PERPENDICULAR TO THE SUPPORTS AND BE SPACED TO PROVIDE A MINIMUM OF 1/4" CLEARANCE BETWEEN SHEATHING AND SUPPORTS. VERIFY DIMENSIONS AND CONDITIONS PRIOR TO CONSTRUCTION. VERIFY DIMENSIONS AND CONDITIONS PRIOR TO CONSTRUCTION.
12. SHEATHING SHALL BE DIMENSIONED WITH LONG DIMENSION PERPENDICULAR TO THE SUPPORTS AND BE SPACED TO PROVIDE A MINIMUM OF 1/4" CLEARANCE BETWEEN SHEATHING AND SUPPORTS. VERIFY DIMENSIONS AND CONDITIONS PRIOR TO CONSTRUCTION. VERIFY DIMENSIONS AND CONDITIONS PRIOR TO CONSTRUCTION.
13. SHEATHING SHALL BE DIMENSIONED WITH LONG DIMENSION PERPENDICULAR TO THE SUPPORTS AND BE SPACED TO PROVIDE A MINIMUM OF 1/4" CLEARANCE BETWEEN SHEATHING AND SUPPORTS. VERIFY DIMENSIONS AND CONDITIONS PRIOR TO CONSTRUCTION. VERIFY DIMENSIONS AND CONDITIONS PRIOR TO CONSTRUCTION.
14. SHEATHING SHALL BE DIMENSIONED WITH LONG DIMENSION PERPENDICULAR TO THE SUPPORTS AND BE SPACED TO PROVIDE A MINIMUM OF 1/4" CLEARANCE BETWEEN SHEATHING AND SUPPORTS. VERIFY DIMENSIONS AND CONDITIONS PRIOR TO CONSTRUCTION. VERIFY DIMENSIONS AND CONDITIONS PRIOR TO CONSTRUCTION.
15. SHEATHING SHALL BE DIMENSIONED WITH LONG DIMENSION PERPENDICULAR TO THE SUPPORTS AND BE SPACED TO PROVIDE A MINIMUM OF 1/4" CLEARANCE BETWEEN SHEATHING AND SUPPORTS. VERIFY DIMENSIONS AND CONDITIONS PRIOR TO CONSTRUCTION. VERIFY DIMENSIONS AND CONDITIONS PRIOR TO CONSTRUCTION.
16. UNLESS NOTED ON DRAWINGS, FILL OUT DIMENSIONS FOR SPACED JOISTS OF REMOVED BAYS.

NFS

ISSUED

NO.	DESCRIPTION	DATE
1	ISSUED FOR CONSTRUCTION	2-1-16

DESIGNED BY: [Signature]

CHECKED BY: [Signature]

DATE: 2-1-16

STRUCTURAL NOTES & FRAMING DETAILS

DATE: 2-1-16

PROJECT NUMBER: 15-000

**TAYLOR RESIDENCE**

38 FOX STREET

PORTLAND, MAINE

**RESIDENTIAL RENOVATION**

**CASCO BAY ENGINEERING**

434 Fox Street  
Portland, ME 04101  
Phone: 207.642.2800  
www.cascobayengineering.com

**BETHANN TAYLOR**

53 DEER HILL AVENUE  
WESTPORT, ME 04091