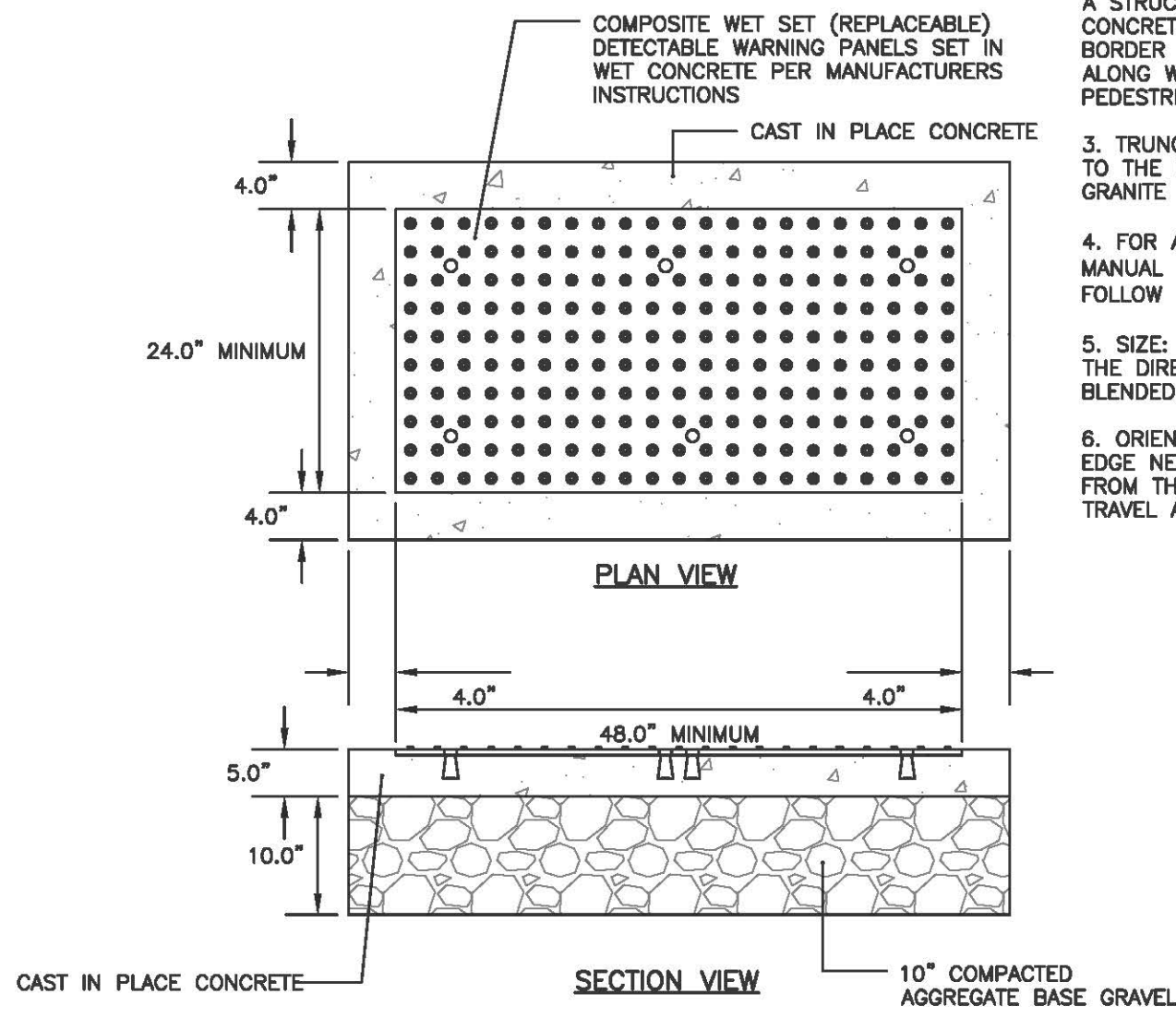
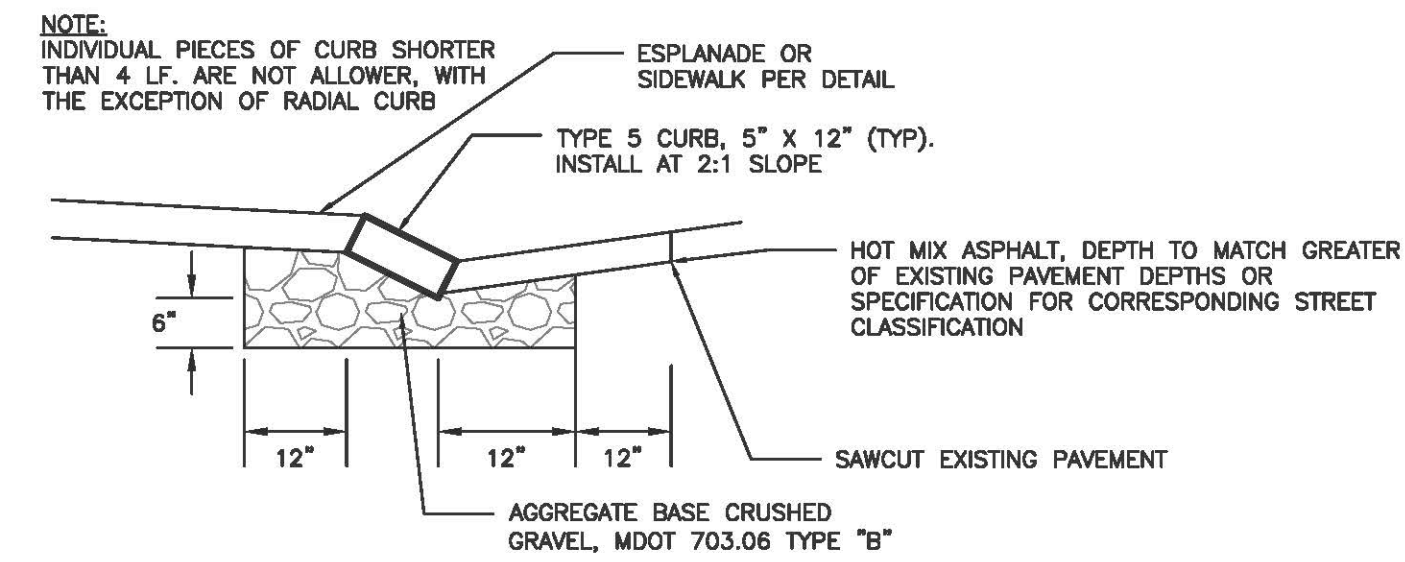


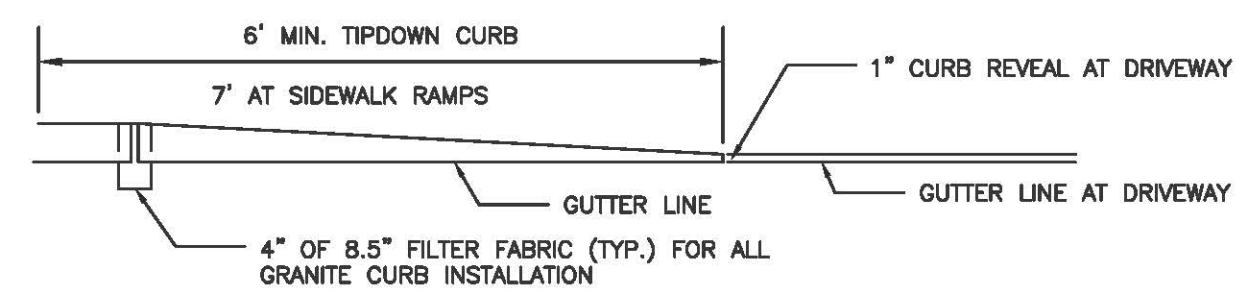
- NOTES:**
1. COMPOSITE WET SET (REPLACEABLE) DETECTABLE WARNING PANELS SHALL BE AS MANUFACTURED BY ADA SOLUTIONS, INC. (WWW.ADATILE.COM) OR APPROVED EQUAL.
 2. CAST IN PLACE CONCRETE SHALL MEET SPECIFICATIONS FOR MAINE D.O.T. CLASS A STRUCTURAL CONCRETE. MINIMUM COMPRESSIVE STRENGTH 4,000 PSI. THE CONCRETE SHALL BE SEALED PRIOR TO SETTING PANELS. THE EXPOSED CONCRETE BORDER SHALL RECEIVE A GROOVED EDGE BETWEEN THE PANEL AND CONCRETE, ALONG WITH A UNIFORM BROOM FINISH PERPENDICULAR TO THE FLOW OF PEDESTRIAN TRAFFIC.
 3. TRUNCATED DOMES SHALL BE ALIGNED IN ROWS, PARALLEL AND PERPENDICULAR TO THE PREDOMINANT DIRECTION OF TRAVEL. TRUNCATED DOME BRICKS AND GRANITE PAVERS ARE NOT ALLOWED.
 4. FOR ALL DETECTABLE WARNING PANELS (EXCEPT AS SPECIFIED IN TECHNICAL MANUAL 1.8.4.), FEDERAL YELLOW COLORED (#33538) PANEL(S) SHALL BE USED. FOLLOW MANUFACTURER'S INSTRUCTIONS FOR INSTALLATION.
 5. SIZE: THE DETECTABLE WARNING PANEL(S) SHALL EXTEND 24 INCHES MINIMUM IN THE DIRECTION OF TRAVEL AND THE FULL WIDTH OF THE CURB RAMP, LANDING, OR BLENDED TRANSITION TO THE STREET.
 6. ORIENTATION: THE DETECTABLE WARNING PANEL SHALL BE LOCATED SO THAT THE EDGE NEAREST TO THE CURB LINE IS 6 INCHES MINIMUM AND 8 INCHES MAXIMUM FROM THE CURB LINE. THE PANEL SHALL BE ORIENTED TO THE DIRECTION OF TRAVEL AS IDENTIFIED BY THE POINT OF EGRESS.



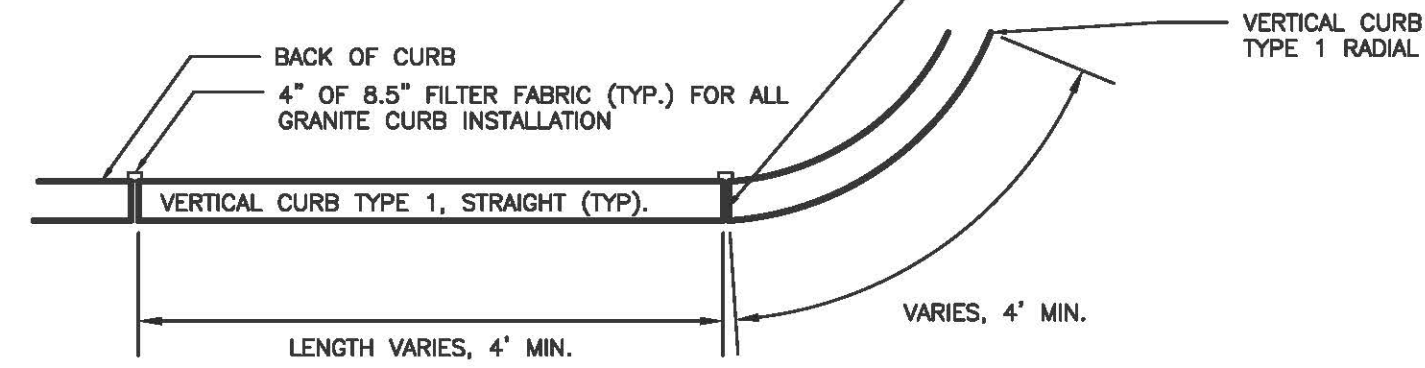
SIDEWALK RAMP DETECTABLE WARNING PANEL
NOT TO SCALE



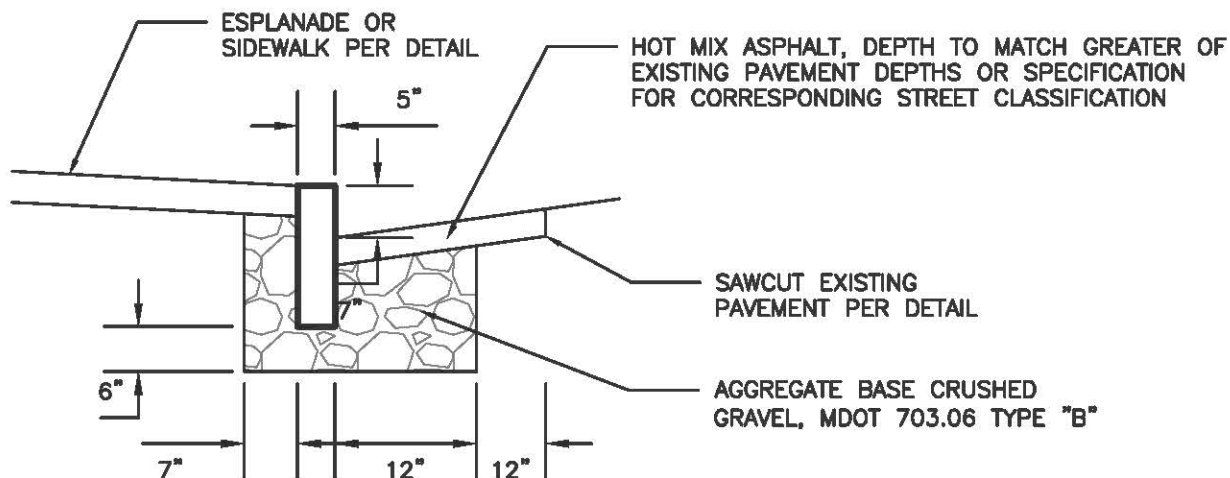
SLOPED GRANITE CURB



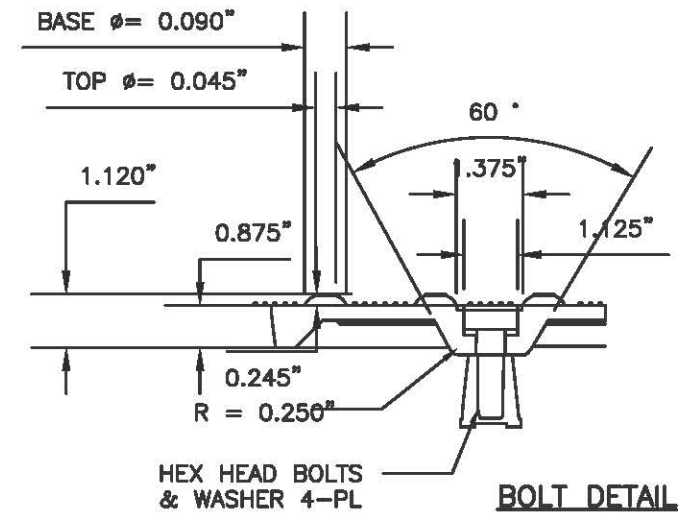
TIPDOWN CURB PROFILE



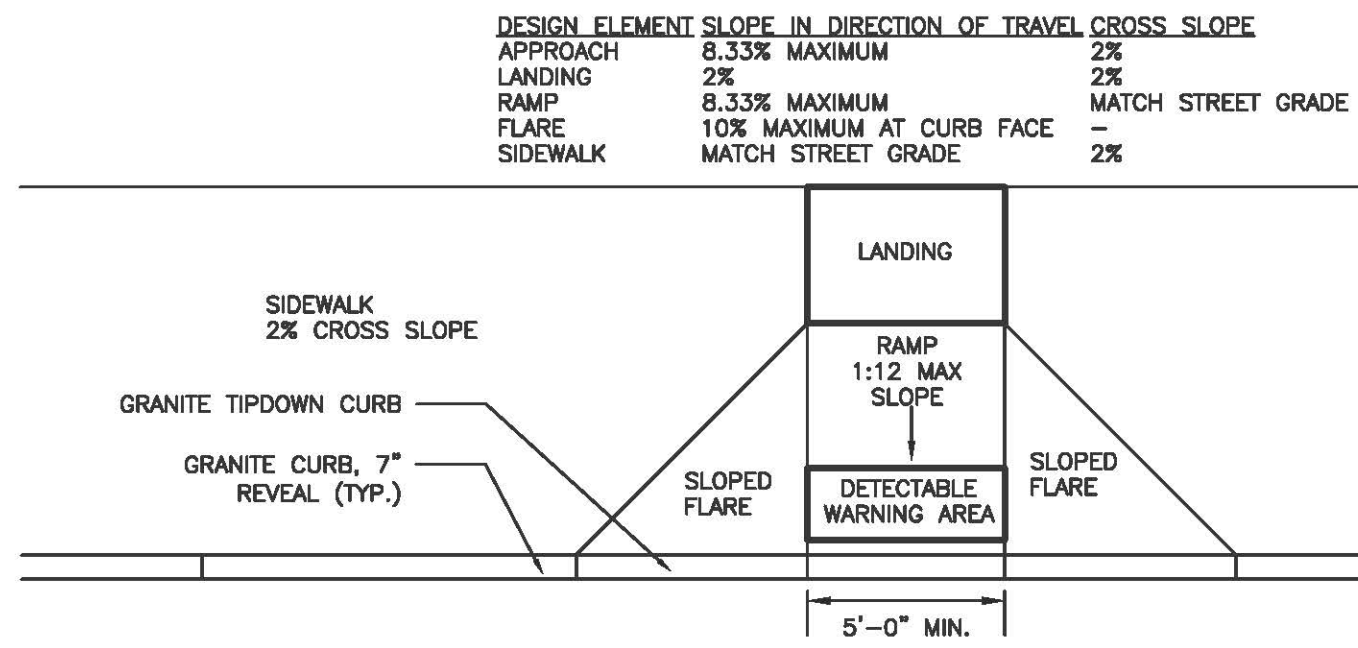
VERTICAL GRANITE CURB PLAN VIEW



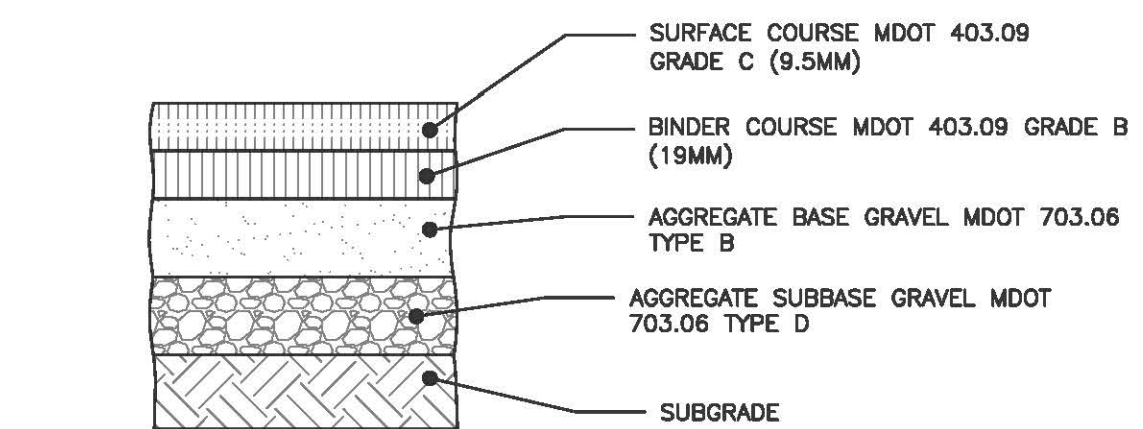
VERTICAL GRANITE CURB INSTALLATION IN EXISTING STREETS DETAIL
NOT TO SCALE



- NOTES:**
1. ALL RAMP SHALL COMPLY WITH ADA STANDARDS
 2. LANDING AREA MAY BE REQUIRED BASED ON SIDEWALK DIMENSIONS
 3. GRANITE CURB ADJACENT TO RAMP SHALL BE FLUSH WITH STREET
 4. SIDEWALK MATERIAL SHALL BE PER CITY SIDEWALK MATERIAL POLICY
 5. FLARED SECTIONS SHOULD MATCH SURFACE MATERIAL USED FOR SIDEWALK CONSTRUCTION



PREFERRED SIDEWALK RAMP LAYOUT ON FOX STREET FOR SIDEWALK WITHOUT ESPLANADE
NOT TO SCALE

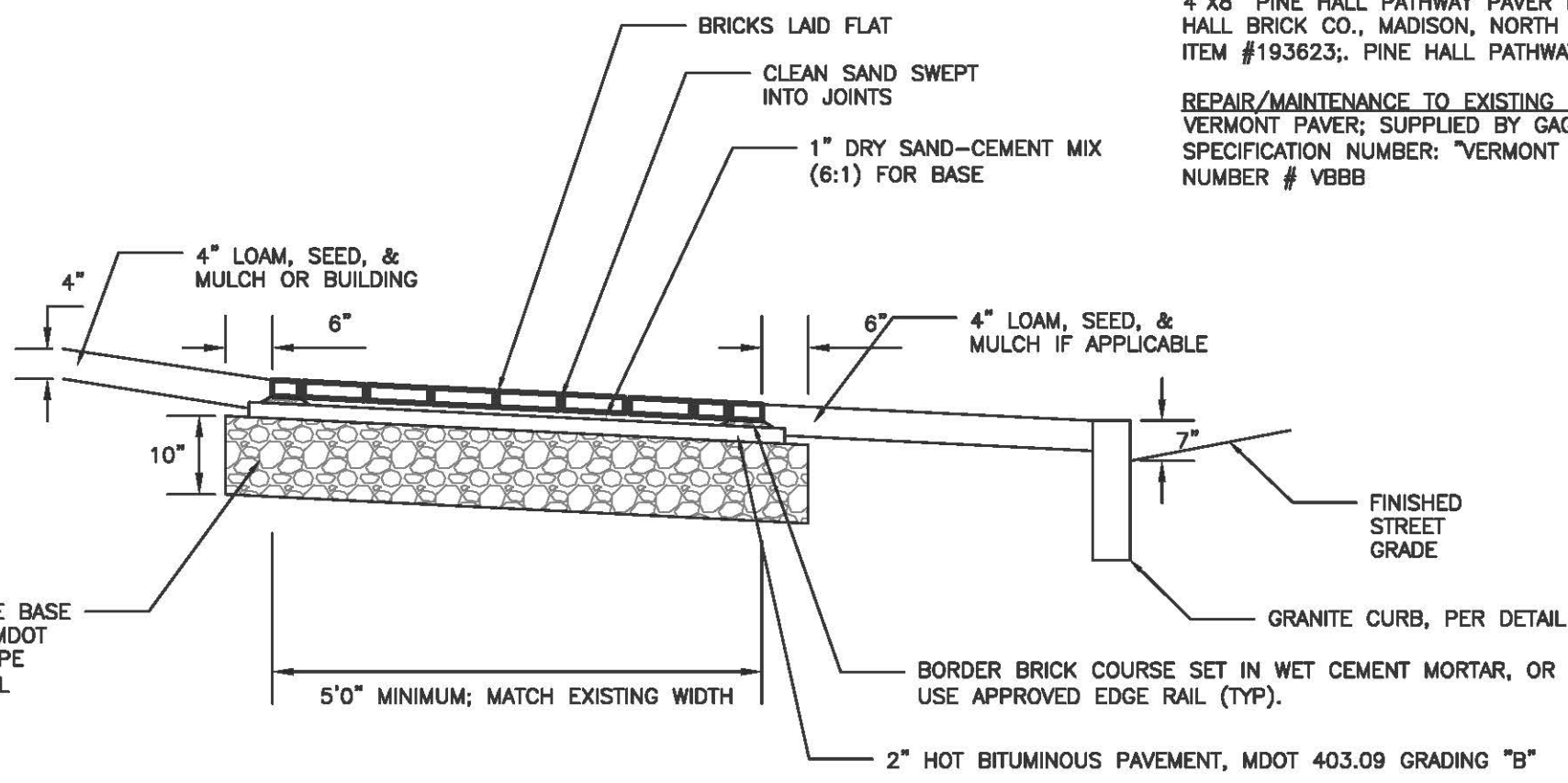


NOTE: COMPACT SUBGRADE TO 95% MAXIMUM DRY DENSITY IN ACCORDANCE WITH ASTM D-1557

STANDARD	THICKNESS OF LAYERS	LAYERS
1-1/2"	SURFACE COURSE MDOT 403.09 GRADE C (9.5mm)	
2"	BINDER COURSE MDOT 403.09 GRADE B (19mm)	
3"	AGGREGATE BASE GRAVEL MDOT 703.06 TYPE B	
15"	AGGREGATE SUBBASE GRAVEL MDOT 703.06 TYPE D	

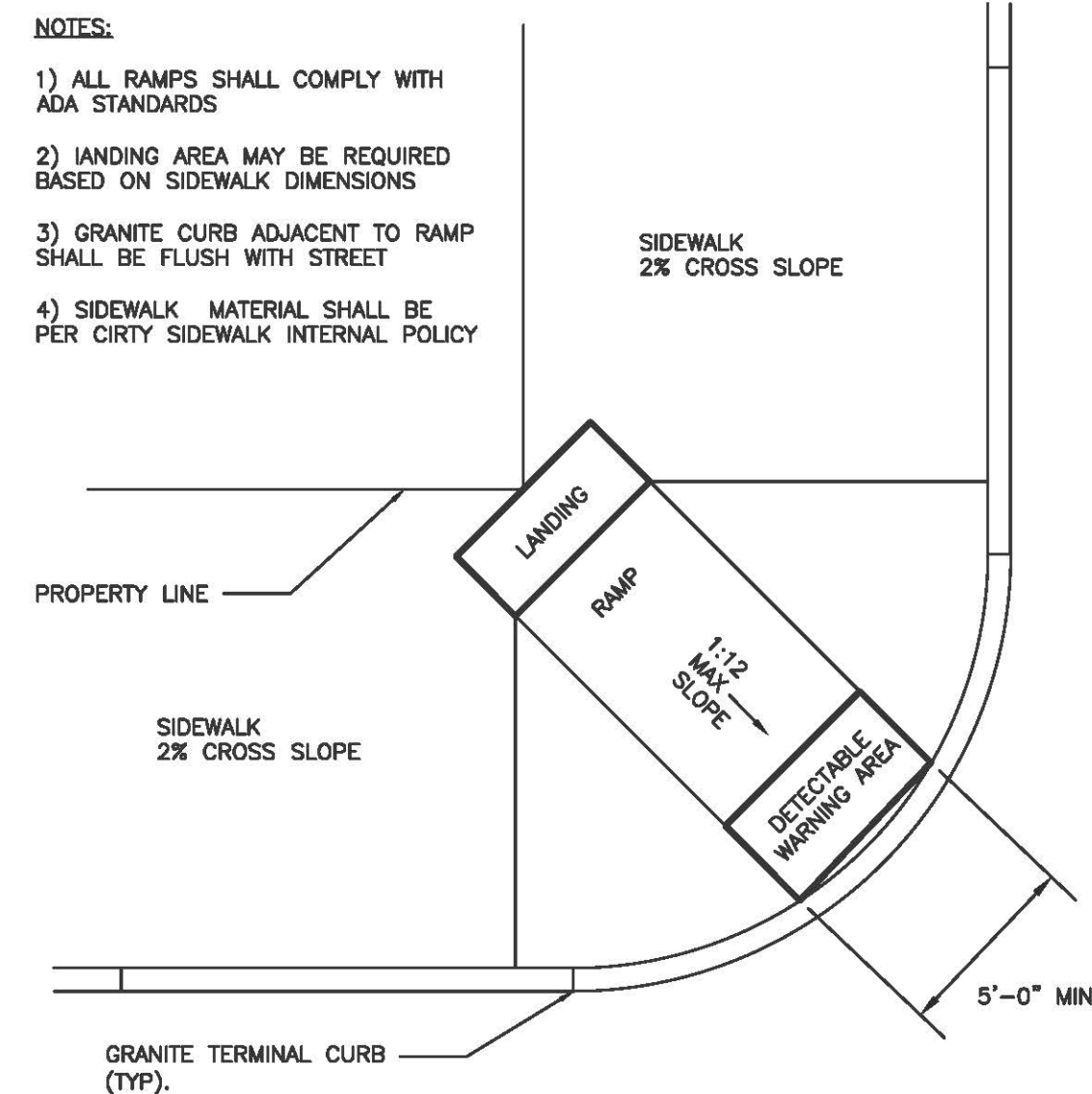
BITUMINOUS PAVEMENT PROFILE
NOT TO SCALE

- BRICKS TO BE USED:**
- NEW CONSTRUCTION:**
4"x8" PINE HALL PATHWAY PAVER BRICK; MFG. BY PINE HALL BRICK CO., MADISON, NORTH CAROLINA. LATCHANCE ITEM #193823; PINE HALL PATHWAY PAVER BRICK.
- REPAIR/MAINTENANCE TO EXISTING BRICK SIDEWALKS:**
VERMONT PAVER; SUPPLIED BY GAONE AND SONS. SPECIFICATION NUMBER: "VERMONT BACKER BRICK" ITEM NUMBER # VB88



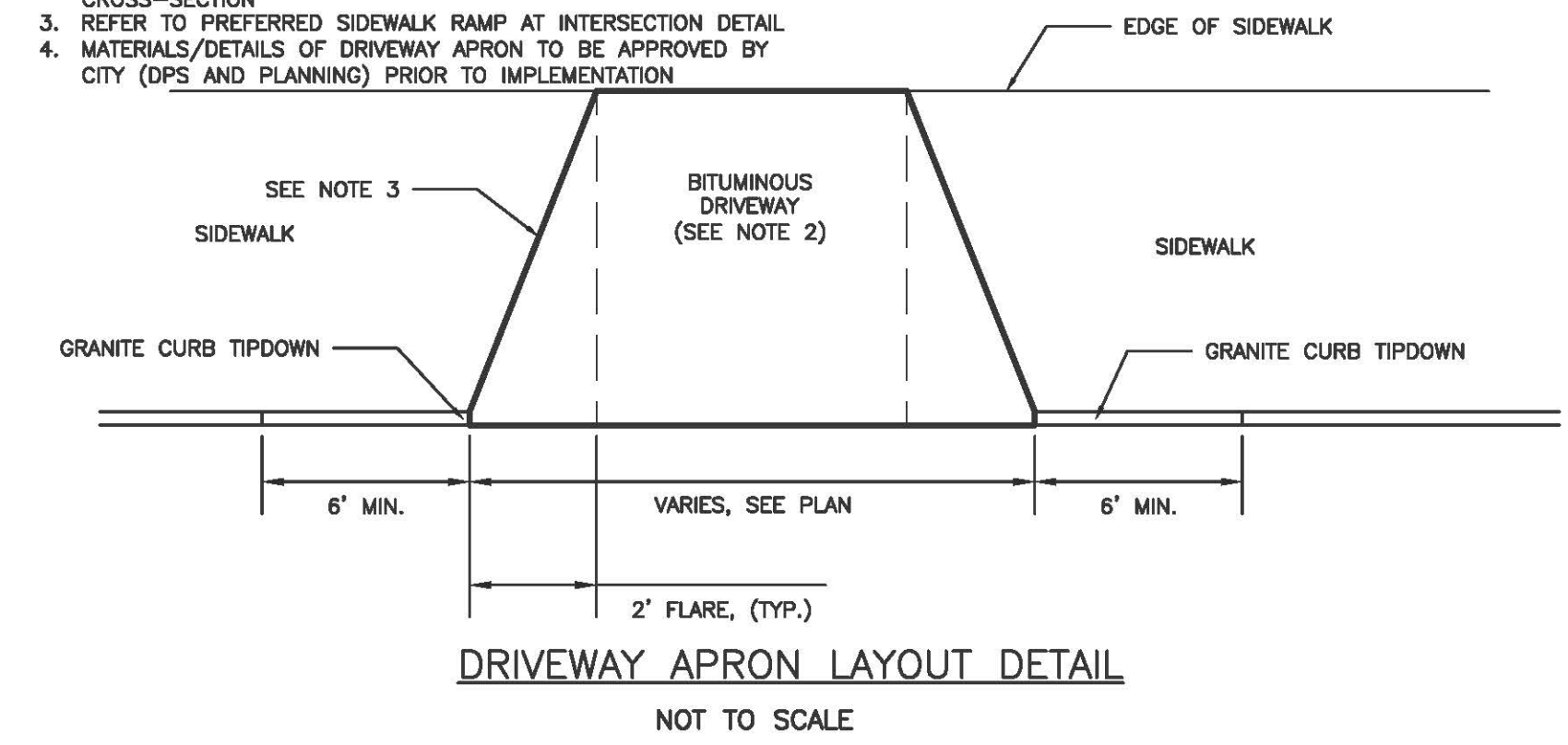
BRICK SIDEWALK WITH BITUMINOUS BASE DETAIL
NOT TO SCALE

- NOTES:**
- 1) ALL RAMP SHALL COMPLY WITH ADA STANDARDS
 - 2) LANDING AREA MAY BE REQUIRED BASED ON SIDEWALK DIMENSIONS
 - 3) GRANITE CURB ADJACENT TO RAMP SHALL BE FLUSH WITH STREET
 - 4) SIDEWALK MATERIAL SHALL BE PER CITY SIDEWALK INTERNAL POLICY



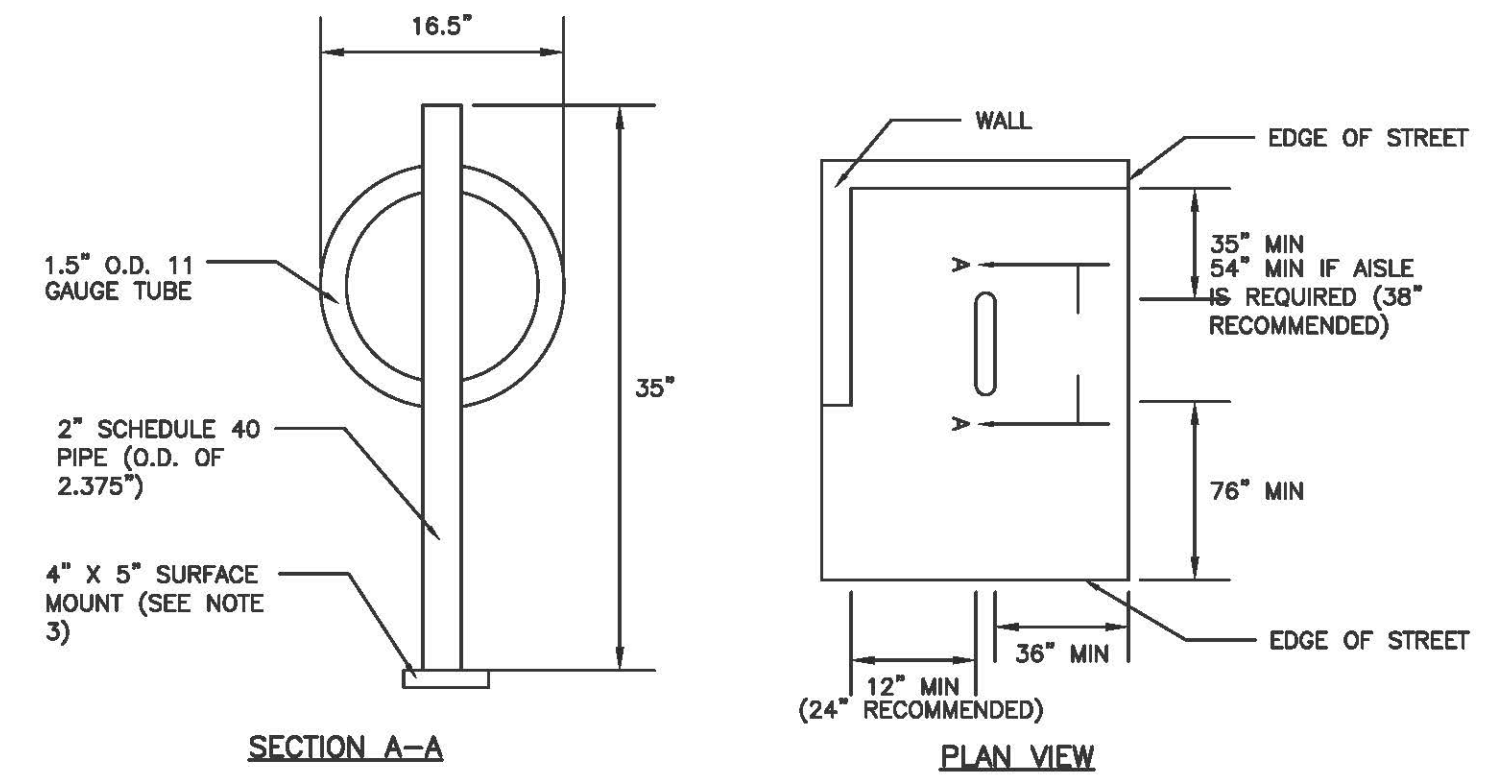
DIAGONAL SIDEWALK RAMP LAYOUT AT INTERSECTION FOR SIDEWALK WITHOUT ESPLANADE
NOT TO SCALE

- NOTES:**
1. REFER TO GRADING, DRAINAGE AND EROSION CONTROL PLAN FOR SITE GRADING
 2. REFER TO BITUMINOUS DRIVEWAY APRON DETAIL FOR APRON CROSS-SECTION
 3. REFER TO PREFERRED SIDEWALK RAMP AT INTERSECTION DETAIL
 4. MATERIALS/DETAILS OF DRIVEWAY APRON TO BE APPROVED BY CITY (DPS AND PLANNING) PRIOR TO IMPLEMENTATION

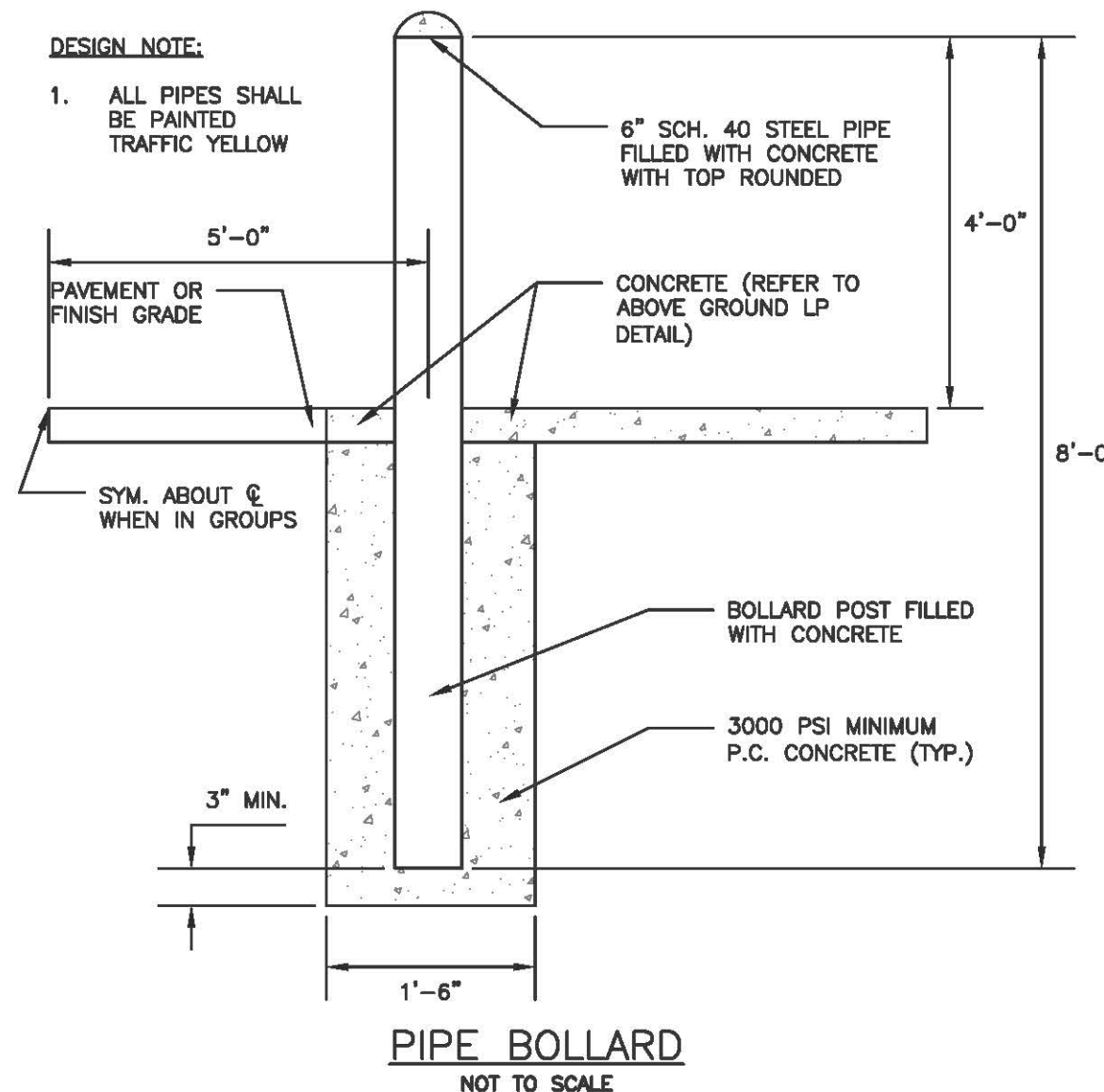


DRIVEWAY APRON LAYOUT DETAIL
NOT TO SCALE

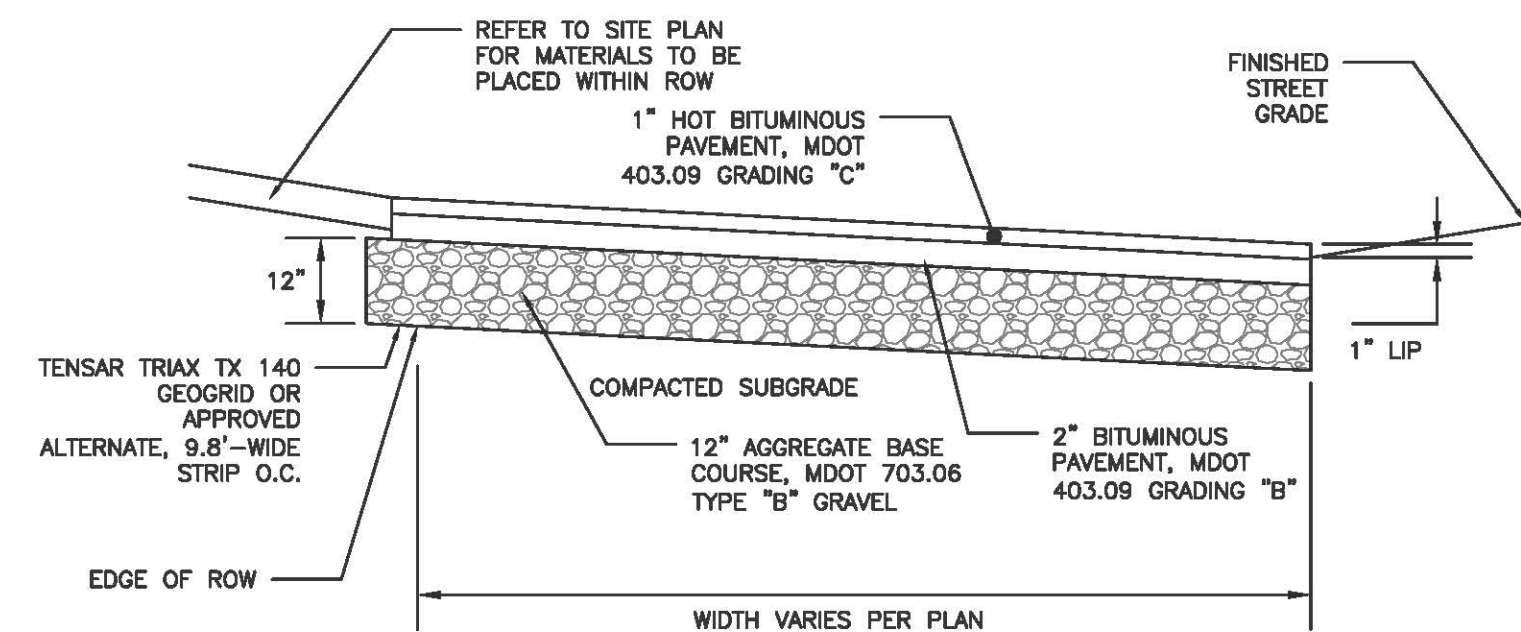
- NOTES:**
1. BICYCLE RACK SHALL HAVE CAPACITY FOR TWO BICYCLES.
 2. BICYCLE RACK PARTS SHALL BE OF UNIFORM COLOR AND SHALL BE FINISHED IN ACCORDANCE WITH PRODUCT SPECIFICATION.
 3. BICYCLE RACK SHALL BE INSTALLED IN ACCORDANCE WITH MANUFACTURER'S MOST RECENT INSTALLATION RECOMMENDATIONS, AND SHALL BE INSTALLED WITH A SURFACE MOUNT UNLESS OTHERWISE APPROVED BY ENGINEER.
 4. BICYCLE RACK SHALL BE "DERO BIKE HITCH", AS MANUFACTURED BY DERO BIKE RACKS.
 5. MINIMUM OFFSETS SHOWN. MANUFACTURER'S RECOMMENDED OFFSETS SHALL BE ENFORCED WHERE POSSIBLE.
 6. MINIMUM DISTANCE BETWEEN BICYCLE RACKS SHALL BE 24". RECOMMENDED DISTANCE BETWEEN BICYCLE RACKS SHALL BE 38".
 7. ALL OFFSETS ARE FROM OUTSIDE EDGES OF ITEMS.



BICYCLE RACK DETAIL
NOT TO SCALE



PIPE BOLLARD
NOT TO SCALE



BITUMINOUS DRIVEWAY APRON DETAIL
NOT TO SCALE

ISSUED FOR
PRE-APP

ISSUED FOR	BY
PRELIMINARY SUB	WHS
	7/12/15
REVISION	REV.
	DATE

SITE DETAILS
EAST BAYSIDE LOFTS
REDFERN MUNJOY, LLC.
P.O. BOX 8818 PORTLAND, ME 04104

ACORN ENGINEERING, INC.
158 DANFORTH STREET, PORTLAND, MAINE 04102
(207) 775-2655

FILE: 1053_DETAILS
DATE: 12/5/2014
JN: 1053
SCALE: NTS
DESIGNED BY: WHS
DRAWN BY: MAG
CHECKED BY: WHS

DRAWING NO.
C-40