

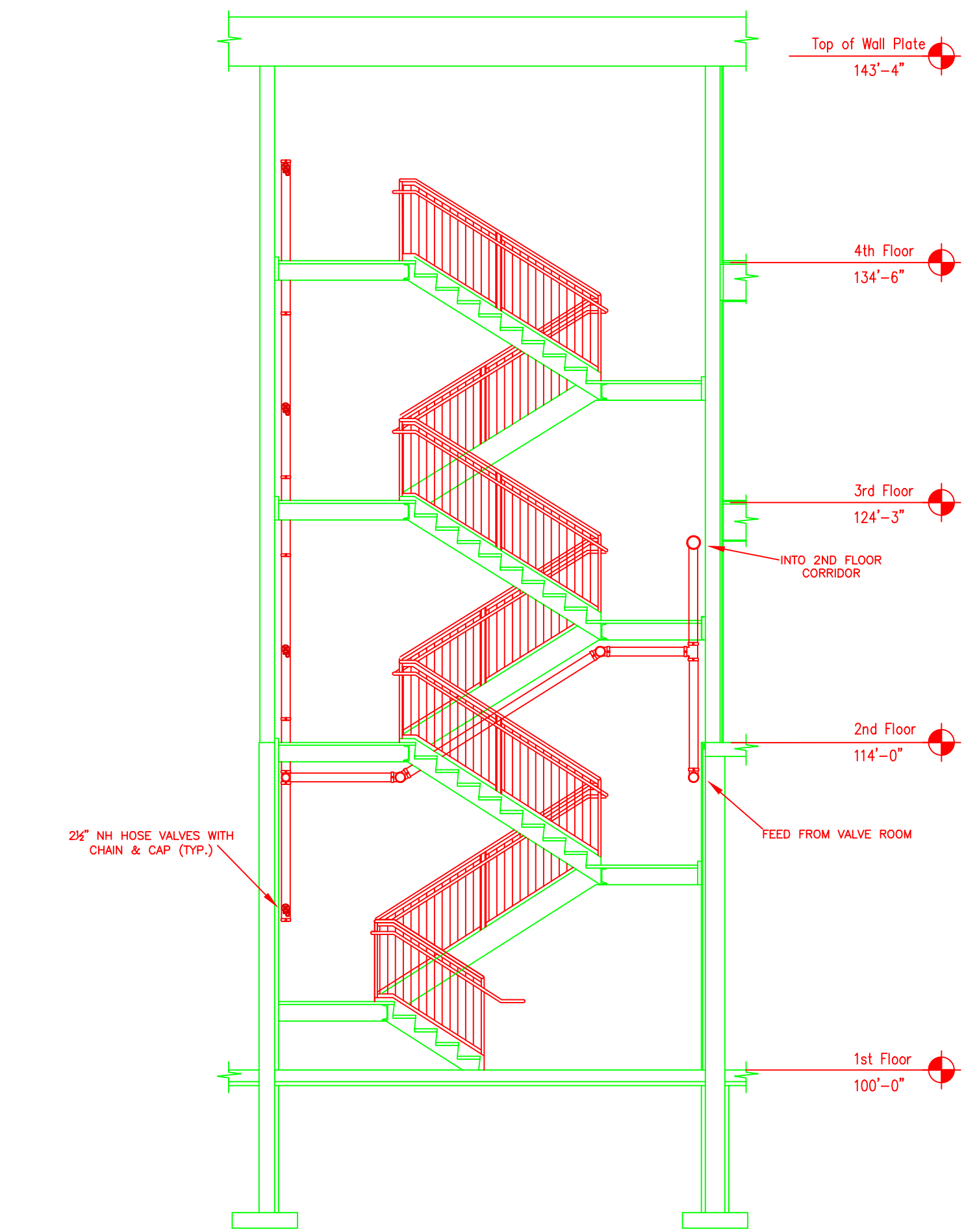
BUILDING SECTION "A"
SCALE: 1/8" = 1'-0"
FINISH FLOOR ELEV. 100.0'

NFPA 13R 2010 EXCLUSIONS

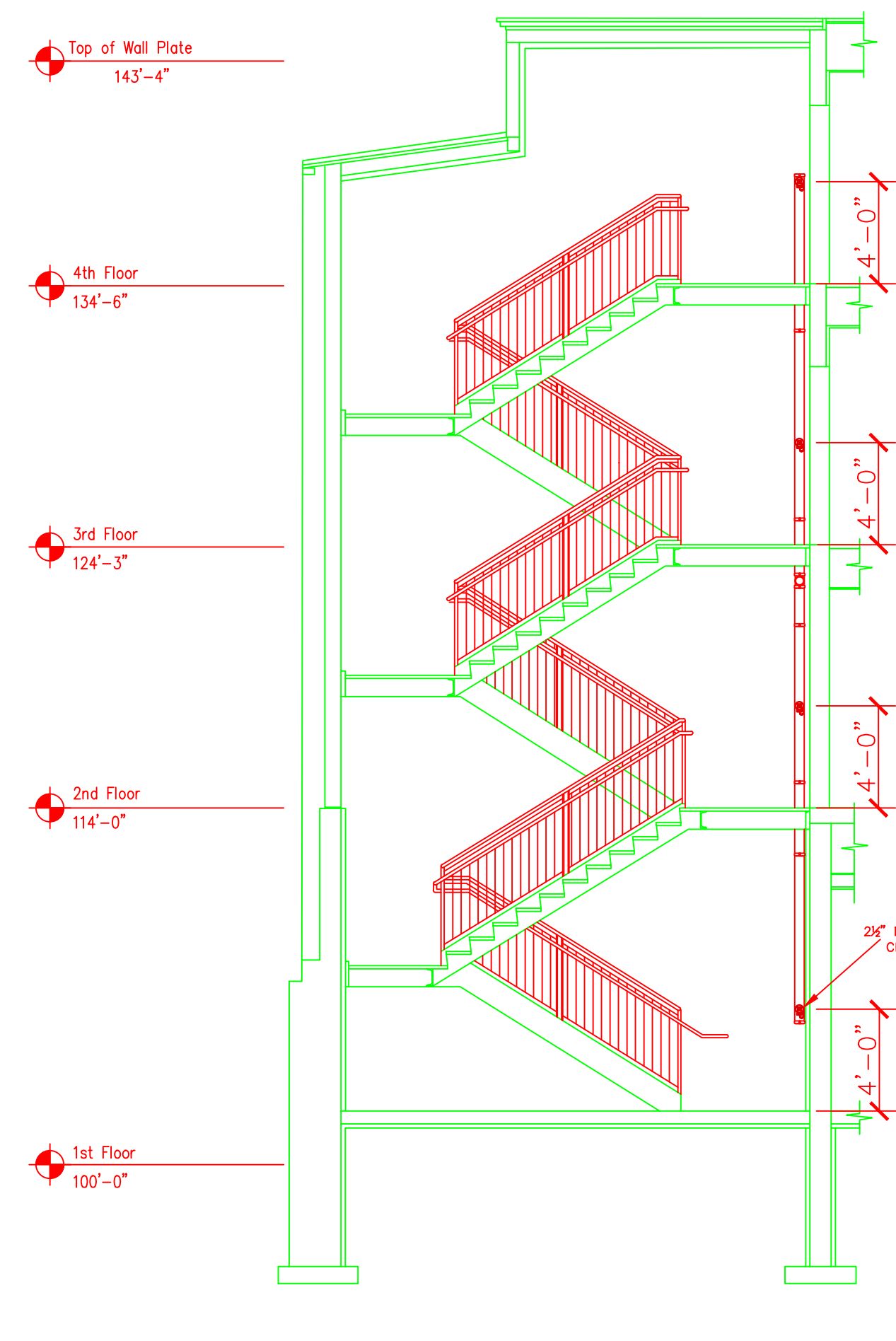
- 1 SECTION 6.6.2 Sprinklers shall not be required in bathrooms where the bathroom area does not exceed 55 ft² (5.1 m²).
- 2 SECTION 6.6.3 Except where specified in 6.6.4, sprinklers shall not be required in clothes closets, linen closets, and pantries within dwelling units that meet all of the following conditions:
(1) The area of the space does not exceed 24 ft² (2.2 m²).
(2) The least dimension does not exceed 3 ft (0.91 m).
(3) The walls and ceilings are surfaced with noncombustible or limited-combustible materials as defined by NFPA 220.
- 3 SECTION 6.6.4 Sprinklers shall be installed in any closet used for heating and air-conditioning equipment except as permitted by 6.6.7.
- 4 SECTION 6.6.5 Sprinklers shall not be required in any porches, balconies, corridors, carports, and stairs that are open and attached.
- 5 SECTION 6.6.6 Sprinklers shall not be required in penthouse equipment rooms, elevator machine rooms, concealed spaces dedicated exclusively to and containing only dwelling unit ventilation equipment, crawl spaces, floor/ceiling spaces, noncombustible elevator shafts where the elevator cars comply with ANSI A17.1, Safety Code for Elevators and Escalators, and other concealed spaces that are not used or intended for living purposes or storage and do not contain fuel-fired equipment.
- 6 SECTION 6.6.6.1 When fuel-fired equipment is present, at least one quick-response intermediate temperature sprinkler shall be installed above the equipment.
- 7 SECTION 6.6.7 Sprinklers shall not be required in closets (regardless of size) on exterior balconies and exterior breezeways/corridors, regardless of size, as long as the closet does not have doors or unprotected penetrations directly into the dwelling unit.

GENERAL NOTES:

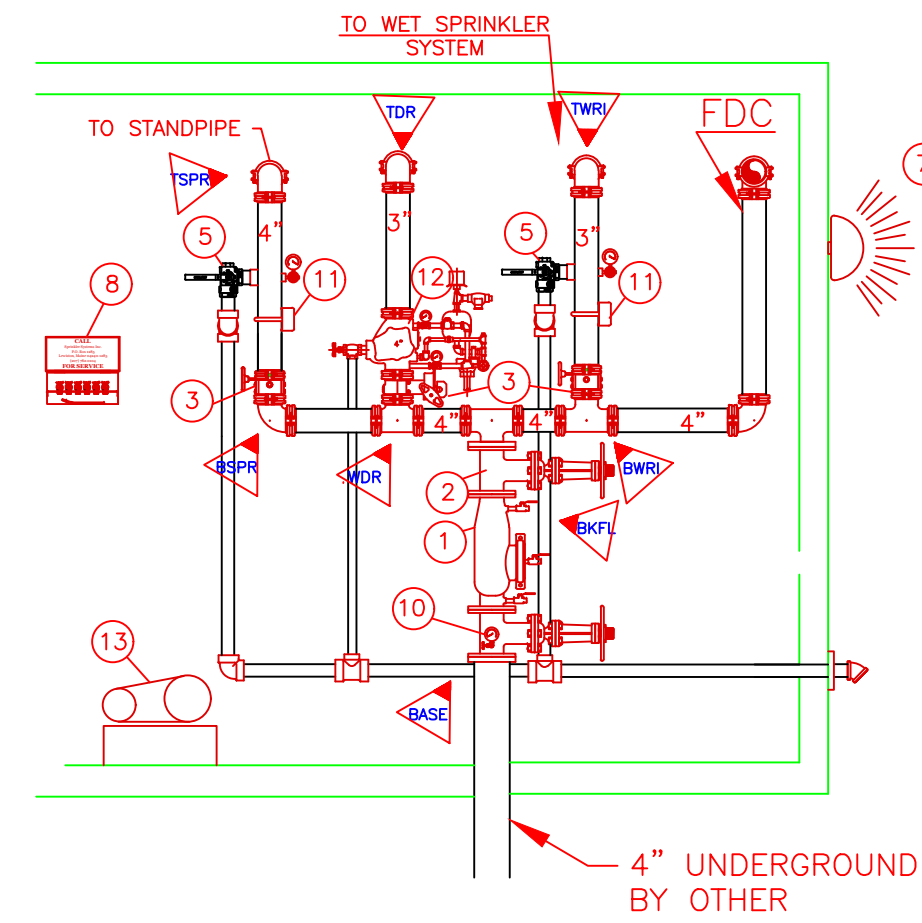
- IT IS THE BUILDING OWNERS RESPONSIBILITY TO PROVIDE ADEQUATE HEAT FOR ALL AREAS IN THE BUILDING PROTECTED BY WET SPRINKLER SYSTEMS AND FOR ALL WATER FILLED SUPPLY PIPES, VALVES AND SYSTEM RISERS IN ALL DRY PIPE SPRINKLER SYSTEMS.
- ALL NEW PIPING IS TO BE HYDROSTATICALLY TESTED AT NOT LESS THAN 200 PSI FOR 2 HOURS, OR AT 50 PSI IN EXCESS OF THE MAXIMUM PRESSURE, WHEN THE MAXIMUM PRESSURE TO BE MAINTAINED IS IN EXCESS OF 150 PSI. (PER NFPA 13)
- WHETHER OR NOT INDICATED ON DRAWINGS, THE FOLLOWING ITEMS ARE TO BE PROVIDED:
- SPARE HEAD CABINET WITH WRENCH (NFPA 13)
- PROVISIONS FOR FLUSHING CONNECTIONS AND DRAINING OF ALL PIPE.
- INSPECTORS TEST CONNECTION SHALL BE PROVIDED FOR EACH SYSTEM
A) FOR WET PIPE SYSTEMS SEE NFPA 13)
B) FOR DRY PIPE SYSTEMS SEE NFPA 13)
- AIR PRESSURE SHALL BE MAINTAINED ON ALL DRY PIPE SYSTEMS BY AN APPROVED AUTOMATIC AIR COMPRESSOR OR PLANT AIR SYSTEM SPECIFICALLY APPROVED FOR AND CAPABLE OF AUTOMATICALLY MAINTAINING THE REQUIRED AIR PRESSURE.
- WET PIPE SYSTEMS SHALL BE PROVIDED WITH A RELIEF VALVE NOT LESS THAN 1/2" IN SIZE. (NFPA 13).
- ALL PIPE 1" SHALL BE SCHEDULE 40 STEEL WITH MALLEABLE IRON FITTINGS.
- ALL PIPE 1 1/2" AND LARGER, SHALL BE SCHEDULE 10 STEEL, WITH GROOVED COUPLINGS AND VICTAULIC[®] MECHANICAL FITTINGS OR EQUIVALENT.
- ALL MECHANICAL TRADES ARE TO COORDINATE THEIR WORK WITH SPRINKLER WORK AS SHOWN ON THESE PLANS.
- ALL HANGERS AND LOCATIONS ARE TO BE IN ACCORDANCE WITH N.F.P.A. 13.
- ALL PIPING IS TO BE PITCHED IN ACCORDANCE WITH N.F.P.A. 13.
- HYDRAULIC DATA REFERENCE POINTS: (B) (12")
- CENTER LINE OF PIPE ABOVE FINISH FLOOR 12'-0" BELOW DECK 12"
- PROTECTIVE CAPS ARE TO REMAIN ON THE SPRINKLER HEADS UNTIL AFTER CEILING ARE INSTALLED.
- THE SCOPE OF WORK UNDER THIS CONTRACT IS TO DESIGN AND INSTALL A WET SPRINKLER SYSTEM PER NFPA 13.



SOUTH STAIRS STANDPIPE DETAIL
SCALE: 1/8" = 1'-0"
FINISH FLOOR ELEV. 100.0'



NORTH STAIRS STANDPIPE DETAIL
SCALE: 1/8" = 1'-0"
FINISH FLOOR ELEV. 100.0'

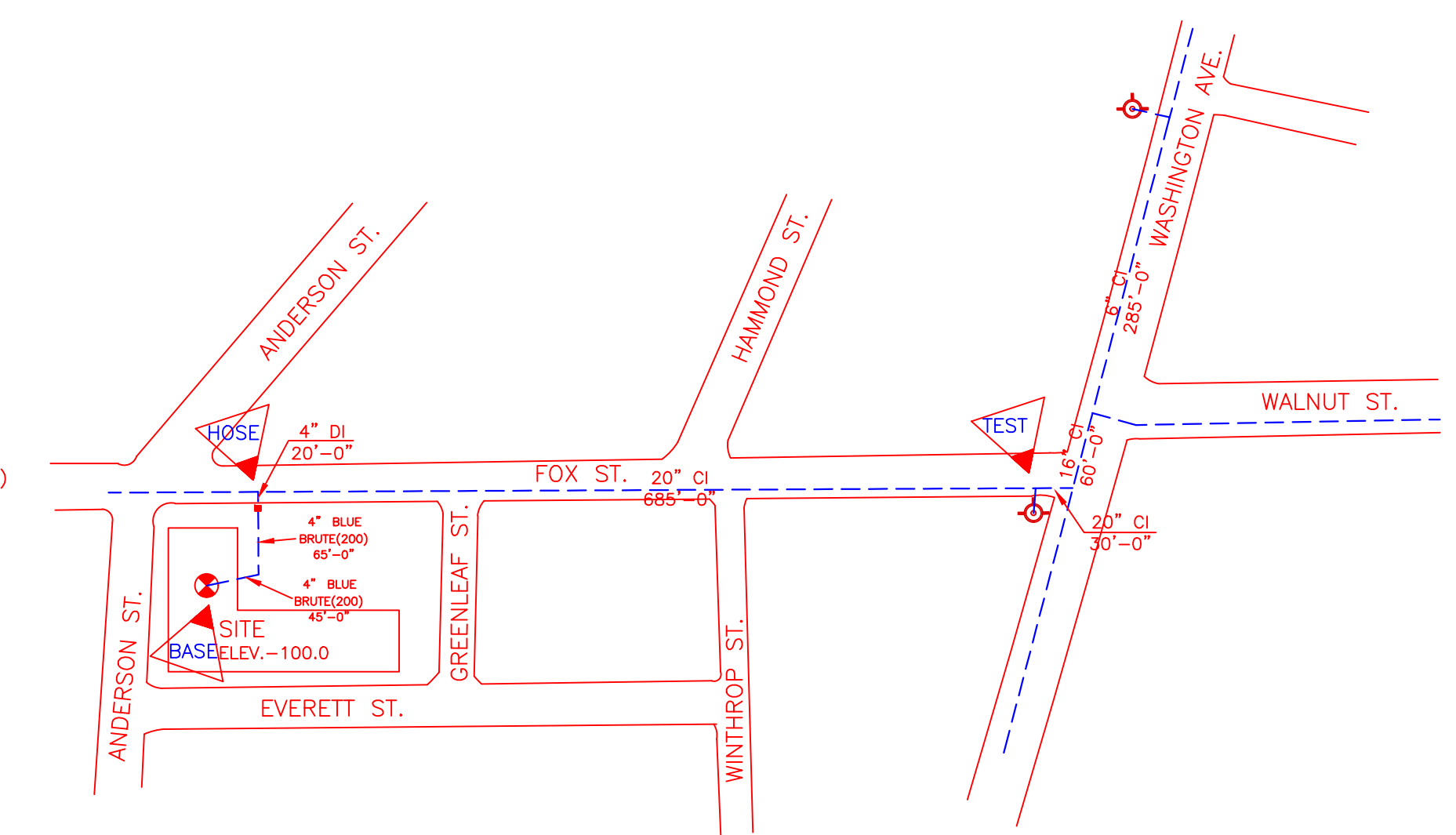


- 1 1 HP AIR COMPRESSOR JENNY
- 2 3" RELIABLE EX DRY VALVE
- 3 FLOW SWITCH
- 4 1" BALL DRIP VALVE (NOT SHOWN)
- 5 1/2" THREE WAY VALVE WITH PRESSURE GAUGE
- 6 1" BALL DRIP VALVE (NOT SHOWN)
- 7 SPARE HEAD AND WRENCH BOX
- 8 ELECTRIC ALARM BELL POTTER
- 9 (3) 2 1/2" FIRE DEPARTMENT CONNECTION ON A SINGLE BACK PLATE (NOT SHOWN)
- 10 TEST AND DRAIN VALVE
- 11 4" SWING CHECK VALVE VICTAULIC MODEL 717 (NOT SHOWN)
- 12 GROOVED BUTTERFLY VALVE-TAMPERS
- 13 4" OS&Y VALVE WITH TAMPERS SWITCH
- 14 4" DERINGER 20 DOUBLE CHECK BACK FLOW

DRY SYSTEM VOLUME = 176 GALLONS

HYDRAULIC DATA NAMEPLATE	HYDRAULIC DATA NAMEPLATE	HYDRAULIC DATA NAMEPLATE	HYDRAULIC DATA NAMEPLATE
This Building is protected by a hydraulically designed Automatic Sprinkler System Location AREA-1 No. of Sprinkler 4 Basis of design 1. Density .05 gpm/ft ² 2. Design area of discharge 4 HEADS/ft ² System Demand 1. Water Flow Rate 80.69 gpm 2. Residual Pressure 69.547 psi CUSHION = 42.11 psi	This Building is protected by a hydraulically designed Automatic Sprinkler System Location AREA-2 No. of Sprinkler 4 Basis of design 1. Density .05 gpm/ft ² 2. Design area of discharge 4 HEADS/ft ² System Demand 1. Water Flow Rate 80.69 gpm 2. Residual Pressure 69.547 psi CUSHION = 42.11 psi	This Building is protected by a hydraulically designed Automatic Sprinkler System Location AREA-3 No. of Sprinkler 3 Basis of design 1. Density .05 gpm/ft ² 2. Design area of discharge 3 HEADS/ft ² System Demand 1. Water Flow Rate 62.03 gpm 2. Residual Pressure 77.191 psi CUSHION = 34.59 psi	This Building is protected by a hydraulically designed Automatic Sprinkler System Location AREA-4 No. of Sprinkler 4 Basis of design 1. Density .15 gpm/ft ² 2. Design area of discharge 4 HEADS/ft ² System Demand 1. Water Flow Rate 80.04 gpm 2. Residual Pressure 62.715 psi CUSHION = 48.95 psi

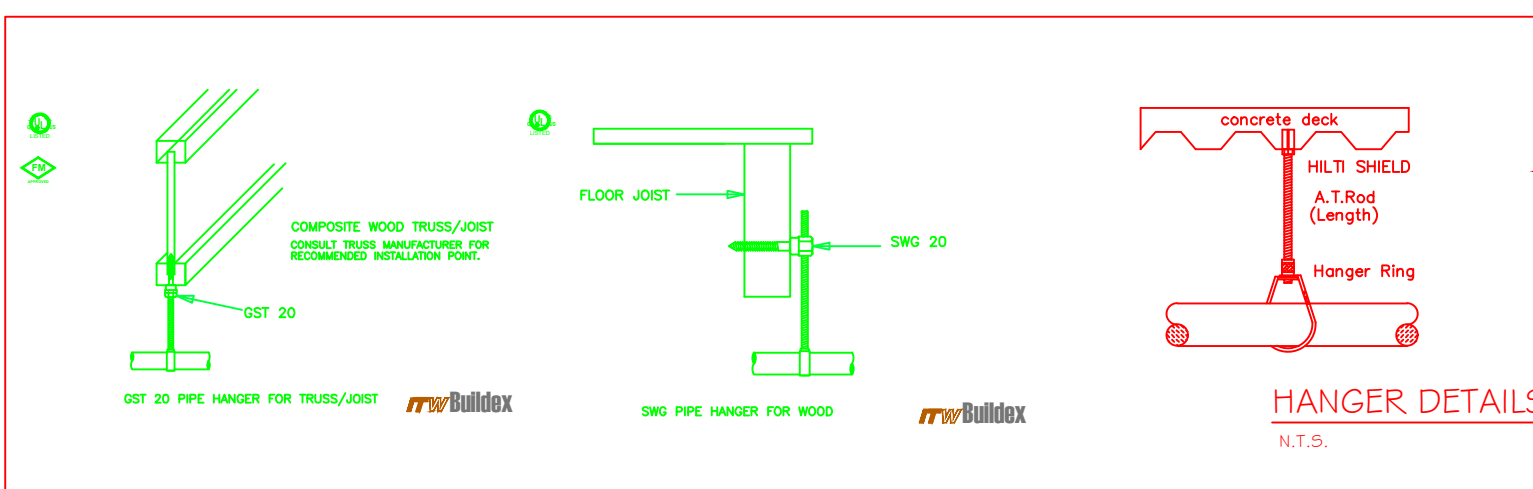
HYDRAULIC DATA NAMEPLATE	HYDRAULIC DATA NAMEPLATE	HYDRAULIC DATA NAMEPLATE
This Building is protected by a hydraulically designed Automatic Sprinkler System Location AREA-5 No. of Sprinkler 12 Basis of design 1. Density .20 gpm/ft ² 2. Design area of discharge 923 ft ² System Demand 1. Water Flow Rate 369.60 gpm 2. Residual Pressure 78.038 psi CUSHION = 78.038 psi HYDRAULICALLY MOST REMOTE	This Building is protected by a hydraulically designed Automatic Sprinkler System Location AREA-6 No. of Sprinkler 4 Basis of design 1. Density .05 gpm/ft ² 2. Design area of discharge 4 HEADS/ft ² System Demand 1. Water Flow Rate 75.86 gpm 2. Residual Pressure 67.031 psi CUSHION = 44.66 psi	This Building is protected by a hydraulically designed Automatic Sprinkler System Location AREA-1 No. of Sprinkler 20 Basis of design 1. Density .15 gpm/ft ² 2. Design area of discharge 1950 ft ² System Demand 1. Water Flow Rate 483.64 gpm 2. Residual Pressure 78.235 psi CUSHION = 22.24 psi HYDRAULICALLY MOST REMOTE



SITE PLAN
NOT TO SCALE

WATER DATA
 STATIC 86 PSI
 RESIDUAL 78 PSI
 FLOW 1299 GPM
 BY PORTLAND WATER DISTRICT
 DATE 5/23/15
 HYDRANT ELEV: 160.00' +/-

1. Type of Hazard OH2/LIGHT/RESIDENTIAL 2. Deflector Distance PER SPEC	3. Pipe Type Used BLK_SCH_10/40 4. Sprinkler Area PER SPEC
5. Type of Construction NON-COMBUSTIBLE	6. Maximum Spacing Allowed PER NFPA 13/NFPA 13R
7. PIPE SIZING METHOD: PIPE SCHEDULE <input type="checkbox"/> HYDRAULICALLY CALCULATED <input checked="" type="checkbox"/>	8. ALL HANGERS AND LOCATIONS TO BE IN ACCORDANCE WITH N.F.P.A. PAMPHLET NO. 13
9. HIGH DEGREE TEMPERATURE SPRINKLER HEADS TO BE INSTALLED IN ACCORDANCE WITH N.F.P.A. PAMPHLET NO. 13	



HANGERS	
AS SHOWN IN DETAIL	

ABBREVIATIONS	
B	Bottom of Beam
D	Bottom of Deck
P	Bottom of Pipe
HV	Hose Valve
N & C	Nipple and Cap
N	Not in Contract
NIS	Not to Scale
OB	Open Bar Joists
PRV	Pressure Red Valve
RM	Roof Membrane
SP	Standpipe
TB	Top of Beam
TOP	Top of Floor
TOP	Top of Steel
UN	Unless Otherwise Noted
CL	Centerline
NAS	No Automatic Sprinklers
OTA	Open to Above

CONTRACT RESPONSIBILITIES									
ITEM	FFC	OTHERS							
STREET CORN									
LOGG MAN									
EXCAVATION									
FLUSHING									
WIRING									
PAINTING									
TAMPERS SWITCHES									
FLOW SWITCHES									
STREET CORN									

SPRINKLER HEAD LEGEND										
SYMBOL	MAKE	MODEL	SIN	FINISH	TYPE	TEMP	NPT	ORIFICE	K-FACTOR	TOTAL
○	RELIABLE	F1FR 56	RA1425	BRONZE	UPRIGHT	200F	1/2"	1/2"	5.6	97
○	RELIABLE	F1FR 56	RA1414	WHITE	SOUR-RED PENDENT	155F	1/2"	1/2"	5.6	47
○	RELIABLE	F1FR 49	R3516	WHITE	SOUR-RED PENDENT	155F	1/2"	7/16"	4.9	260
○	RELIABLE	F1FR 44	R3531	WHITE	HORIZ. SIDEWALL	155F	1/2"	7/16"	4.4	84
○	RELIABLE	F1FR 56	RA1435	BRONZE	HORIZ. SIDEWALL	200F	1/2"	1/2"	5.6	2
TOTAL → 490										

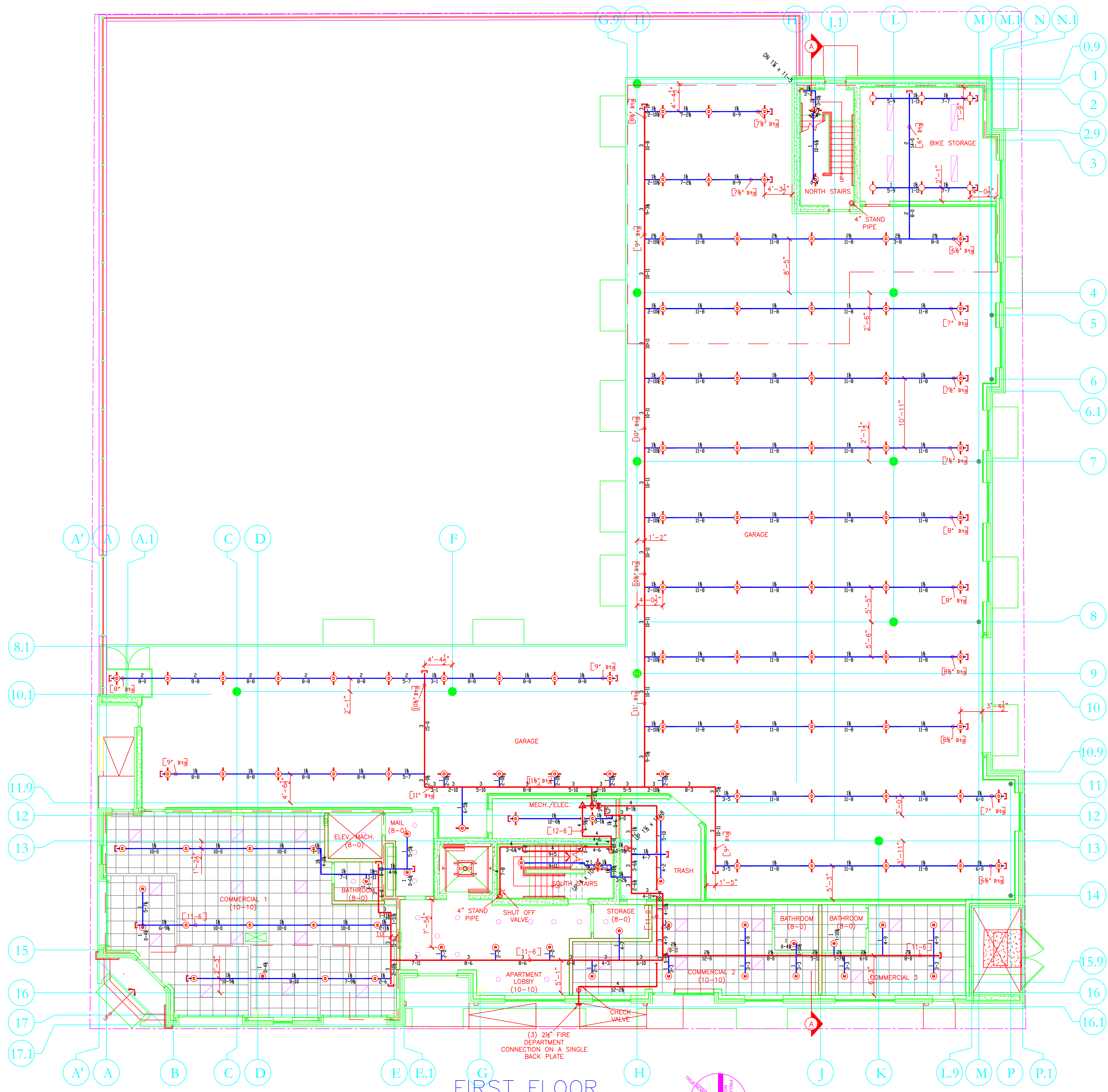
SUBMITTALS	
DATE SENT	DATE RECEIVED
03/30/12	
I.S.O.	
F.M.	
L.M.	
L.R.I.	
L.A.	
STATE FIRE	
LOCAL FIRE	
LOCAL WATER	
OWNER	

89 ANDERSON ST.
 89 ANDERSON ST.
 PORTLAND, ME 04101

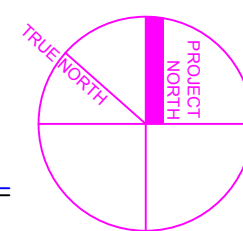
SPRINKLER SYSTEMS INC.
 P.O. BOX 1285
 LEWISTON, MAINE
 04243-1285

CONTRACT WITH ALLIED COOK		
NO.	DATE	DESCRIPTION
1		
2		
3		
4		
5		

AS NOTED	
DRAWN BY	CHECKED BY
RD	IDS
DATE	3/30/2016
TOTAL SPKRS ON JOB	490
SHEET#	1 of 5
JOB#	15126



**FIRST FLOOR
SPRINKLER PLAN**
SCALE: 1/8" = 1'-0"
FINISH FLOOR ELEV. 100.0'



SPRINKLER HEAD LEGEND										
SYMBOL	MAKE	MODEL	SIN	FINISH	TYPE	TEMP	NPT	ORIFICE	K-FACTOR	TOTAL
	RELIABLE	F1FR 56	RA1425	BRONZE	UPRIGHT	200° F	1/2"	1/2"	5.6	97
	RELIABLE	F1FR 56	RA1414	WHITE	SOUP-REC PENDING	155° F	1/2"	1/2"	5.6	47
	RELIABLE	F1FR 49	R3516	WHITE	SOUP-REC PENDING	155° F	1/2"	7/16"	4.9	260
	RELIABLE	F1FR 44	R3531	WHITE	HORIZ SOSPINAL	155° F	1/2"	7/16"	4.4	84
	RELIABLE	F1FR 56	RA1435	BRONZE	HORIZ SOSPINAL	200° F	1/2"	1/2"	5.6	2
										TOTAL → 490

LICENSE# 093
R.M.S.# 442

PERMIT # ?????

SPRINKLER SYSTEMS INC.
P.O. BOX 1285
LEWISTON MAINE
04243-1285

89 ANDERSON ST.
89 ANDERSON ST.
PORTLAND, ME 04101

CONTRACT WITH ALLIED COOK

SYSTEM TYPE	NO.	DATE	REVISIONS	DESCRIPTION
WET				
DRY				
DELUGE				
PREACTION				
ME. LIFE				
HYDRO-PRO				

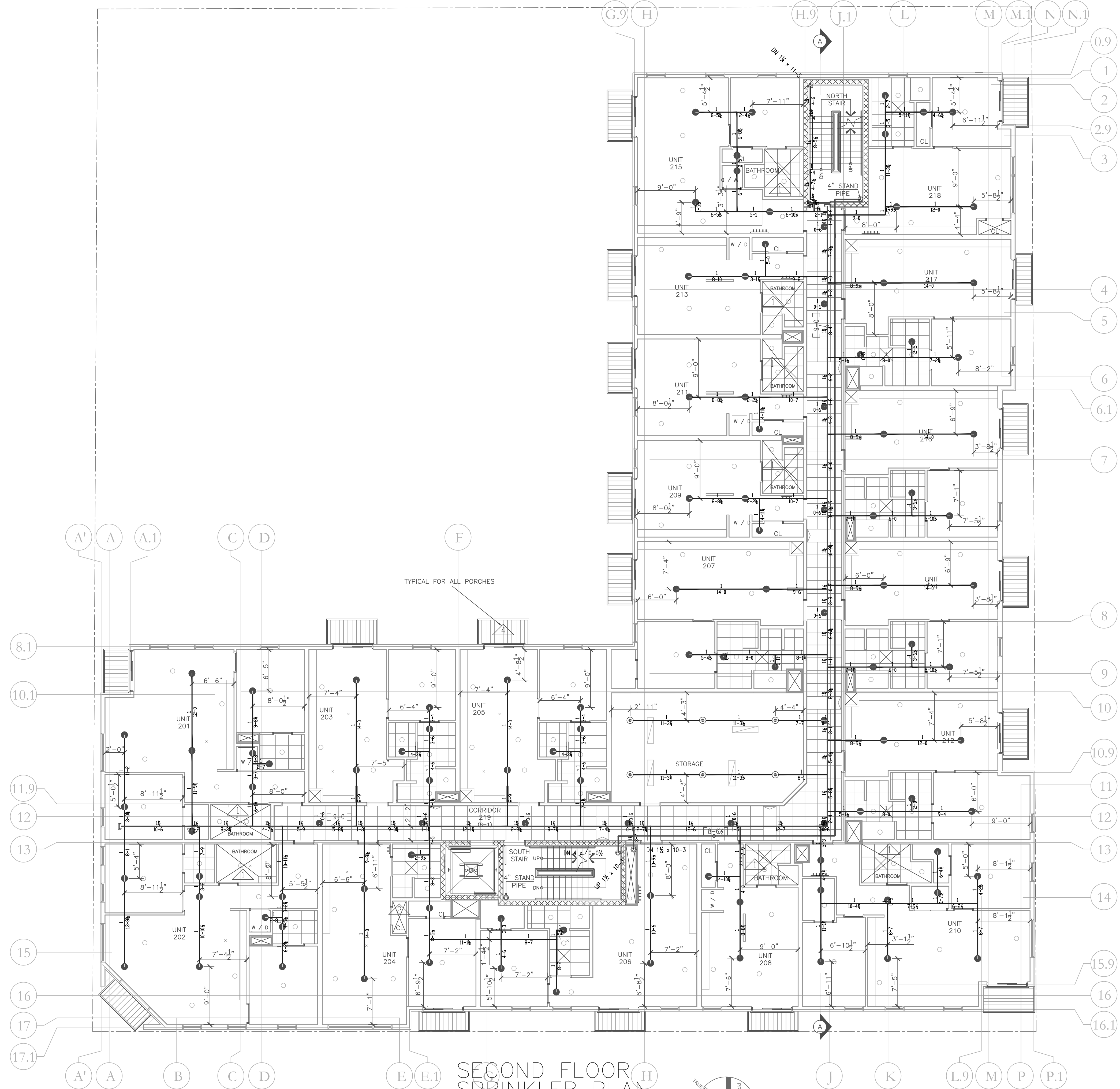
TOTAL SPKRS ON JOB 490

SHEET# 2 of 5

JOB# 15126

SUBMITTAL COPY

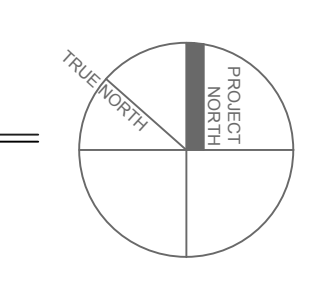




**SECOND FLOOR
SPRINKLER PLAN**

SCALE: 1/8" = 1'-0"
FINISH FLOOR ELEV. 114.0'

- ALL UNIT CEILING HEIGHTS ARE 8'-7" (Unless Otherwise Noted)
- ALL ACT. CEILING HEIGHTS ARE 8'-0" (Unless Otherwise Noted)



SPRINKLER HEAD LEGEND										
SYMBOL	MAKE	MODEL	SIN	FINISH	TYPE	TEMP	NPT	ORIFICE	K-FACTOR	TOTAL
○	RELIABLE	F1FR 56	RA1425	BRONZE	UPRIGHT	200° F	1/2"	1/2"	5.6	97
○	RELIABLE	F1FR 56	RA1414	WHITE	SEMI-REC PENDING	155° F	1/2"	1/2"	5.6	47
○	RELIABLE	F1FR 49	R3516	WHITE	SEMI-REC PENDING	155° F	1/2"	7/16"	4.9	260
○	RELIABLE	F1FR 44	R3531	WHITE	HORIZ SOSPINAL	155° F	1/2"	7/16"	4.4	84
○	RELIABLE	F1FR 56	RA1435	BRONZE	HORIZ SOSPINAL	200° F	1/2"	1/2"	5.6	2
TOTAL										490

LICENSE # 093 R.M.S.# 442 PERMIT # ????

P.O. BOX 1285
LEWISTON MAINE
04243-1285

SUBMITTAL COPY

89 ANDERSON ST.
89 ANDERSON ST.
PORTLAND, ME 04101

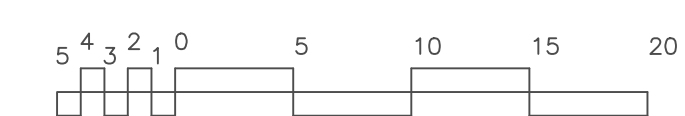
CONTRACT WITH ALLIED COOK

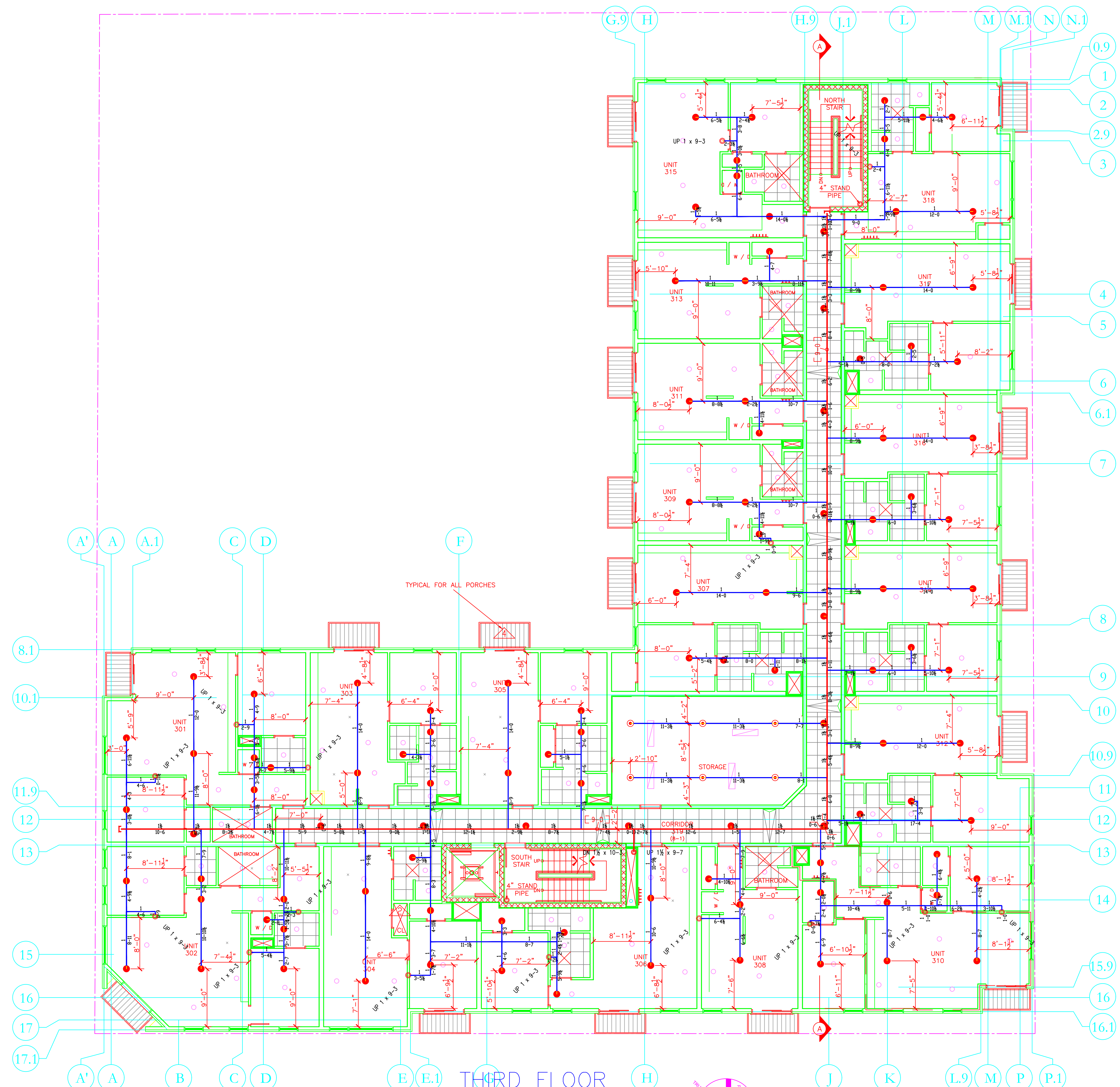
SYSTEM TYPE	NO.	DATE	REVISIONS	DESCRIPTION
WET				
DRY				
DELUGE				
PREACTION				
ME. LIFE				
HYDRO-PRO				

TOTAL SPKRS ON JOB: 490

SHEET # 3 of 5

JOB # 15126

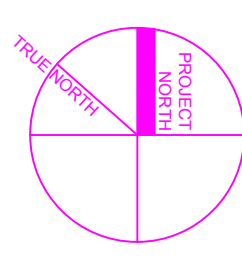




**THIRD FLOOR
SPRINKLER PLAN**

SCALE: 1/8" = 1'-0"
FINISH FLOOR ELEV. 124.25'

- ALL UNIT CEILING HEIGHTS ARE 8'-6" (Unless Otherwise Noted)
- ALL ACT. CEILING HEIGHTS ARE 8'-0" (Unless Otherwise Noted)



SPRINKLER HEAD LEGEND										
SYMBOL	MAKE	MODEL	SIN	FINISH	TYPE	TEMP	NPT	ORIFICE	K-FACTOR	TOTAL
	RELIABLE	F1FR 56	RA1425	BRONZE	UPRIGHT	200° F	1/2"	1/2"	5.6	97
	RELIABLE	F1FR 56	RA1414	WHITE	SOUL-REC PENDING	155° F	1/2"	1/2"	5.6	47
	RELIABLE	F1FR 49	R3516	WHITE	SOUL-REC PENDING	155° F	1/2"	7/16"	4.9	260
	RELIABLE	F1FR 44	R3531	WHITE	HORIZ SIGNAL	155° F	1/2"	7/16"	4.4	84
	RELIABLE	F1FR 56	RA1435	BRONZE	HORIZ SIGNAL	200° F	1/2"	1/2"	5.6	2
										TOTAL → 490

5 4 3 2 0 5 10 15 20

LICENSE# 093 442 R.M.S.# 442 PERMIT # ????

P.O. BOX 1285
LEWISTON MAINE
04243-1285

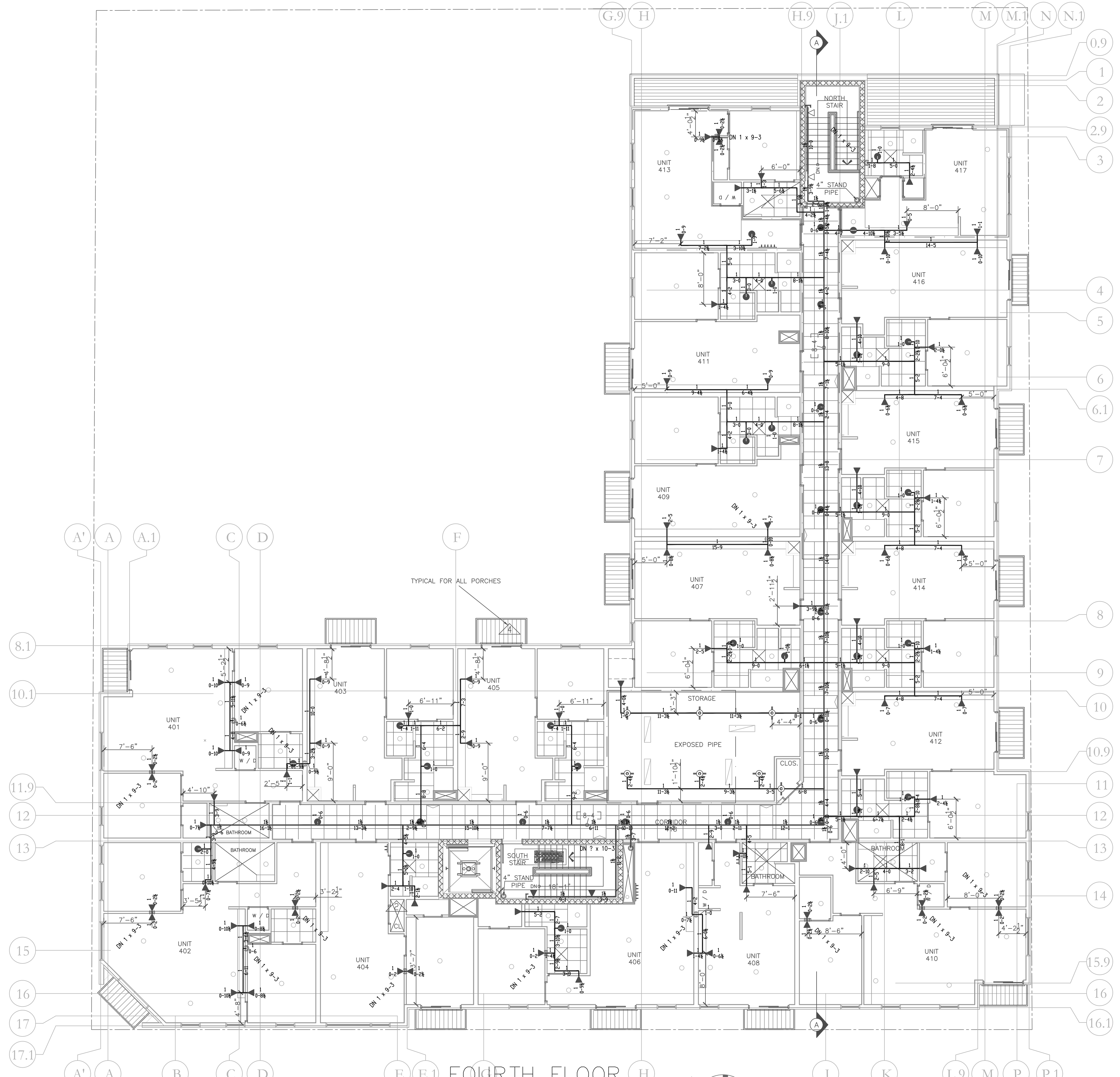
89 ANDERSON ST.
89 ANDERSON ST.
PORTLAND, ME 04101

CONTRACT WITH ALLIED COOK

SYSTEM TYPE	NO.	DATE	REVISIONS	DESCRIPTION
WET				
DRY				
DELUGE				
PREACTION				
ME LIFE				
HYDRO-PRO				

SCALE AS NOTED
DRAWN BY RDO
CHECKED BY CDS
DATE 3/30/2016
TOTAL SPKRS ON JOB 490
SHEET# 4 of 5
JOB# 15126

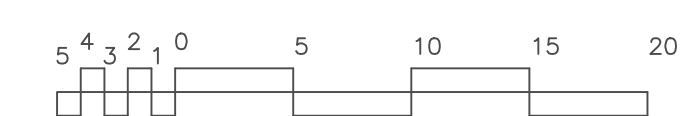
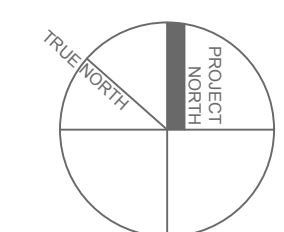
SUBMITTAL COPY



**FOURTH FLOOR
SPRINKLER PLAN**

SCALE: 1/8" = 1'-0"
FINISH FLOOR ELEV. 134.5'

- ALL UNIT CEILING HEIGHTS ARE 8'-5" (Unless Otherwise Noted)
- ALL ACT. CEILING HEIGHTS ARE 7'-6" (Unless Otherwise Noted)



SPRINKLER HEAD LEGEND										
SYMBOL	MAKE	MODEL	SIN	FINISH	TYPE	TEMP	NPT	ORIFICE	K-FACTOR	TOTAL
	RELIABLE	F1FR 56	RA1425	BRONZE	UPRIGHT	200° F	1/2"	1/2"	5.6	97
	RELIABLE	F1FR 56	RA1414	WHITE	SOUL-REC PENDING	155° F	1/2"	1/2"	5.6	47
	RELIABLE	F1RES 49	R3516	WHITE	SOUL-REC PENDING	155° F	1/2"	7/16"	4.9	260
	RELIABLE	F1RES 44	R3531	WHITE	HORIZ. SIDEWALL	155° F	1/2"	7/16"	4.4	84
	RELIABLE	F1FR 56	RA1435	BRONZE	HORIZ. SIDEWALL	200° F	1/2"	1/2"	5.6	2
										TOTAL → 490

LICENSE# 093 R.M.S.# 442 PERMIT # ????

P.O. BOX 1285
LEWISTON MAINE
04243-1285

SUBMITTAL COPY

89 ANDERSON ST.
89 ANDERSON ST.
PORTLAND, ME 04101

CONTRACT WITH ALLIED COOK

SYSTEM TYPE	NO.	DATE	REVISIONS	DESCRIPTION
WET				
DRY				
DELUGE				
PREACTION				
ME. LIFE				
HYDRO-PRO				

SCALE AS NOTED
DRAWN BY RDO
CHECKED BY CDS
DATE 3/30/2016
TOTAL SPKRS ON JOB 490
SHEET# 5 of 5
JOB# 15126