

© 2016 RYAN SENATORE ARCHITECTURE

RESTAURANT
91 ANDERSON STREET
PORTLAND, MAINE



RYAN SENATORE ARCHITECTURE
565 CONGRESS STREET
SUITE 304
PORTLAND, MAINE 04101
207-650-6414
senatorearchitecture.com

CONSULTANTS:
STRUCTURAL:
Structural Integrity
77 Oak Street
Portland, ME 04101
207-774-4614

REVISIONS:

DATE: JUNE 21, 2016

PROJECT No.

DRAWN BY: RRT / RJS

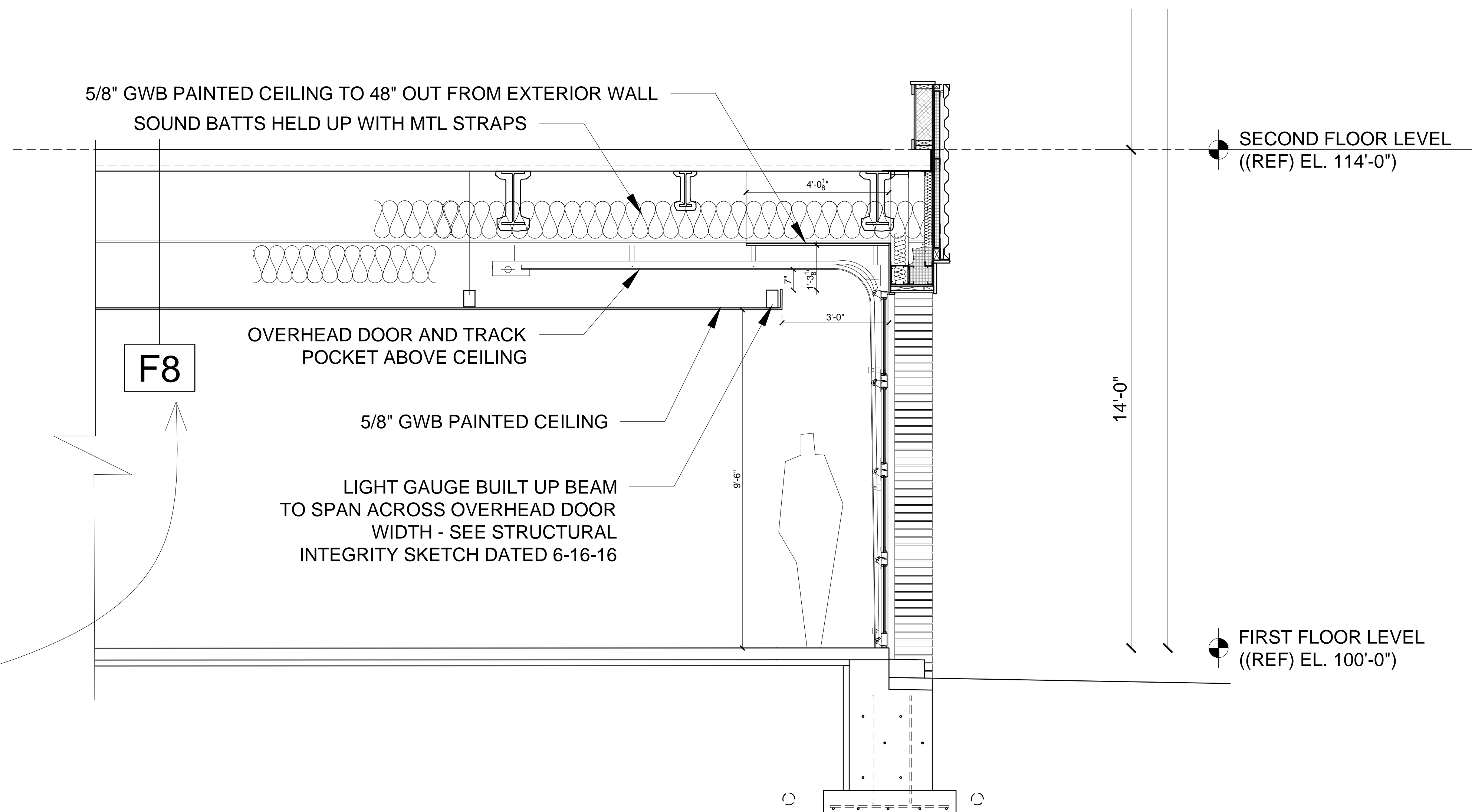
CHECKED BY: RJS

SCALE: AS NOTED

SHEET TITLE:

R1-2

GRAPHIC DEPICTION		DESCRIPTION			
		<ul style="list-style-type: none"> - REINFORCED CONCRETE COMPOSITE SLAB ON GALVANIZED STEEL CORRUGATED DECK (SEE STRUCTURAL DRAWINGS) - STEEL BEAMS (SEE STRUCTURAL DRAWINGS) WITH 3 HR SPRAYED ON FIREPROOFING - 12" SOUND BATT INSULATION - GALVANIZED STEEL HANGER WIRE ATTACHED TO STEEL DECK - STEEL FRAMING MEMBERS, MAIN RUNNERS 15/16" WIDE FACE 48" O.C. - CROSS CHANNELS 24" O.C. - LAYER OF 5/8" GWB ATTACHED PERPENDICULAR TO CHANNELS, JOINTS STAGGERED 			
		TYPE	FIRE RATING	UL NUMBER	STC RATING
F8		3 HR	D902	N/A	N/A



1 CEILING SECTION AT OVERHEAD DOORS
1/2" = 1'-0"