

© 2016 RYAN SENATORE ARCHITECTURE

**RESTAURANT**  
91 ANDERSON STREET  
PORTLAND, MAINE



RYAN SENATORE ARCHITECTURE  
565 CONGRESS STREET  
SUITE 304  
PORTLAND, MAINE 04101  
207-655-6414  
senatorearchitecture.com

CONSULTANTS:  
**STRUCTURAL:**  
Structural Integrity  
77 Oak Street  
Portland, ME 04101  
207-774-4614

REVISIONS:

DATE: JUNE 21, 2016

PROJECT No.

DRAWN BY: RRT / RJS

CHECKED BY: RJS

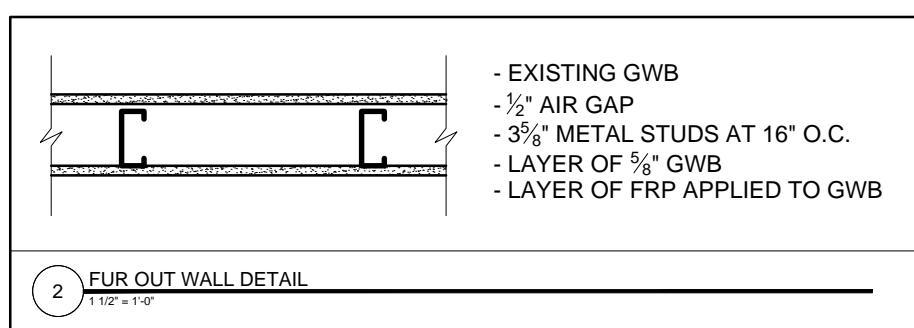
SCALE: AS NOTED

SHEET TITLE:

**R1-0**

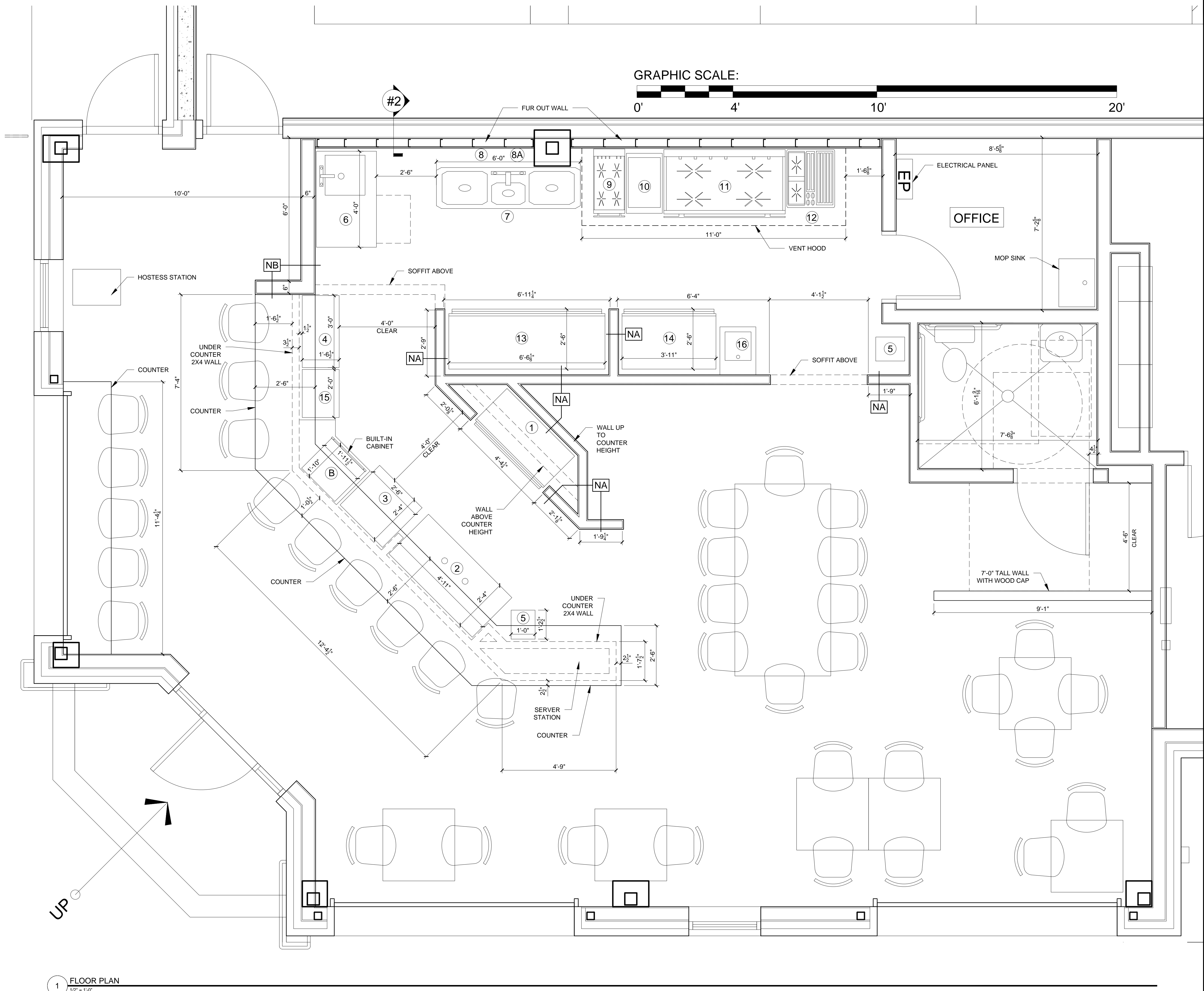
**RESTAURANT APPLIANCE SCHEDULE:**

#1)	BEER COOLER (TRUE): TBB-24GAL-48G-LD - 15 AMP DEDICATED OUTLET - 4'-0" W x 2'-6" D
#2)	TAP SYSTEM (TRUE): TDD-2 - 15 AMP DEDICATED OUTLET - 5'-0" W x 2'-6" D
#3)	ICE MAKER (MANITOWOC / NEO): U-310 - 15 AMP DEDICATED OUTLET - 2'-6" W x 2'-4" D - (RECOMMENDED 5" CLEARANCE) - NEED 3/8" INLET AND 1/2" DRAIN
#4)	3 BAY SINK (KROWNE): 1800 SERIES - 3'-0" W x 1'-6 1/2" D x 34" H
#5)	HANDWASH SINK (JOHN BOOS): PBHS-W-0909 - 1'-0" W x 1'-2 1/2" D x 10" TALL OFF COUNTER
#6)	DISH TABLE (ADVANCED TABCO): DTU-U60-48R - 4'-0" W x 2'-6" D
#7)	DISH WASHER SINK (JOHN BOOS): E3S8-15-14 - 4'-2 1/2" W x 1'-8 1/2" D
#8)	T & S BRASS: B-0133-CCB-CR
#8A)	T & S BRASS: B-0156
#9)	FRYER (PITCO): SG14R - NATURAL GAS HOOK UP REQUIRED - 1'-4" W x 3'-0" D (4'-0" DEEP WHEN DOOR OPEN)
#10)	VERTICAL BROILER (STAR): VBG 30 - NATURAL GAS HOOK UP REQUIRED - 1'-4 1/2" W x 2'-1" D x 2'-8" H
#11)	OVEN (SOUTH BEND): S60DD-2G/T - NATURAL GAS HOOK UP REQUIRED - 5'-1" W x 2'-10" D
#12)	GRILL - TABLE TOP (STAR): 6124RCBF - NATURAL GAS HOOK UP REQUIRED - 2'-0" W x 2'-5" D
#13)	REACH-IN REFRIGERATOR (TRUE): T-72 - 15 AMP DEDICATED OUTLET - 6'-6" W x 2'-6" D (4'-6" DEEP WHEN DOOR OPEN)
#14)	UNDER-COUNTER REFRIGERATOR (TRUE): TUC-48 - 15 AMP DEDICATED OUTLET???
#15)	ICE SINK (DRAIN REQUIRED BUT NOT WATER SUPPLY)
#16)	PRODUCE WASHING SINK



GRAPHIC DEPICTION	DESCRIPTION
	- LAYER OF 5/8" GWB - 3/8" LIGHT GAUGE METAL STUDS AT 16" O.C. - LAYER OF 5/8" GWB
TYPE	FIRE RATING   UL NUMBER   STC RATING   IC RATING
NA	N/A   N/A   N/A   N/A

GRAPHIC DEPICTION	DESCRIPTION
	- LAYER OF 5/8" GWB - 6" LIGHT GAUGE METAL STUDS AT 16" O.C. - LAYER OF 5/8" GWB
TYPE	FIRE RATING   UL NUMBER   STC RATING   IC RATING
NB	N/A   N/A   N/A   N/A



**1 FLOOR PLAN**  
1/2" = 1'-0"