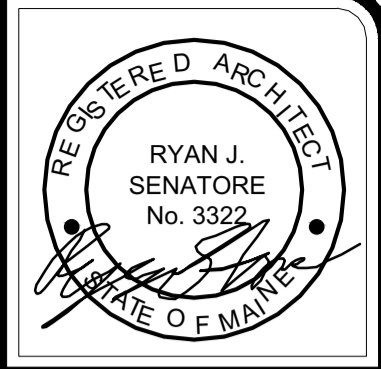


**REFLECTED CEILING PLAN NOTES**

- 1.) G.C. TO COORDINATE LOCATIONS OF PLUMBING CLEAN OUTS WITH ACCESS PANELS AS SHOWN ON REFLECTED CEILING PLANS
- 2.) G.C. TO PROVIDE ACCESS PANELS AS REQUIRED FOR ALL ELEMENTS (SPRINKLER, VALVES, ETC) NOT SHOWN ON THIS REFLECTED CEILING PLAN
- 3.) G.C. TO PROVIDE METAL FRAMING AND BLOCKING REQUIRED FOR ALL ACCESS PANELS AND CONTROL JOINTS



© 2015 RYAN SENATORE ARCHITECTURE

**APARTMENTS**  
89 ANDERSON STREET  
PORTLAND, MAINE



**RYAN SENATORE ARCHITECTURE**  
565 CONGRESS STREET  
PORTLAND, MAINE 04101  
207-650-6414  
senatorearchitecture.com

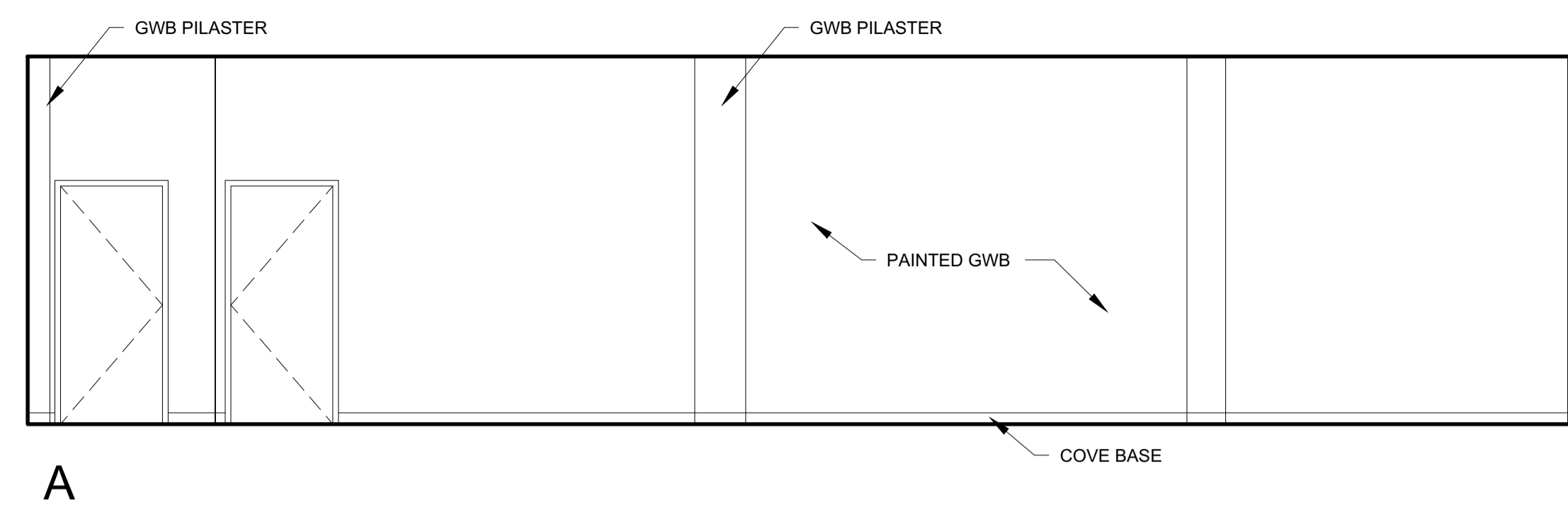
**CONSULTANTS:**  
**STRUCTURAL:**  
Structural Integrity  
77 Oak Street  
Portland, ME 04101  
207-774-4614

**REVISIONS:**

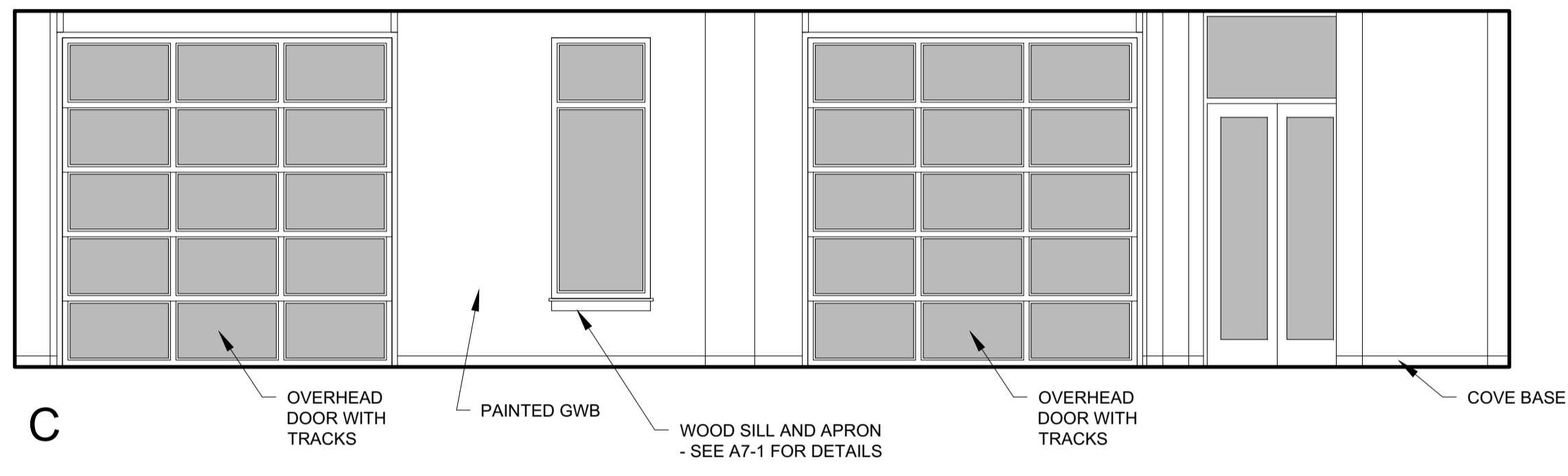
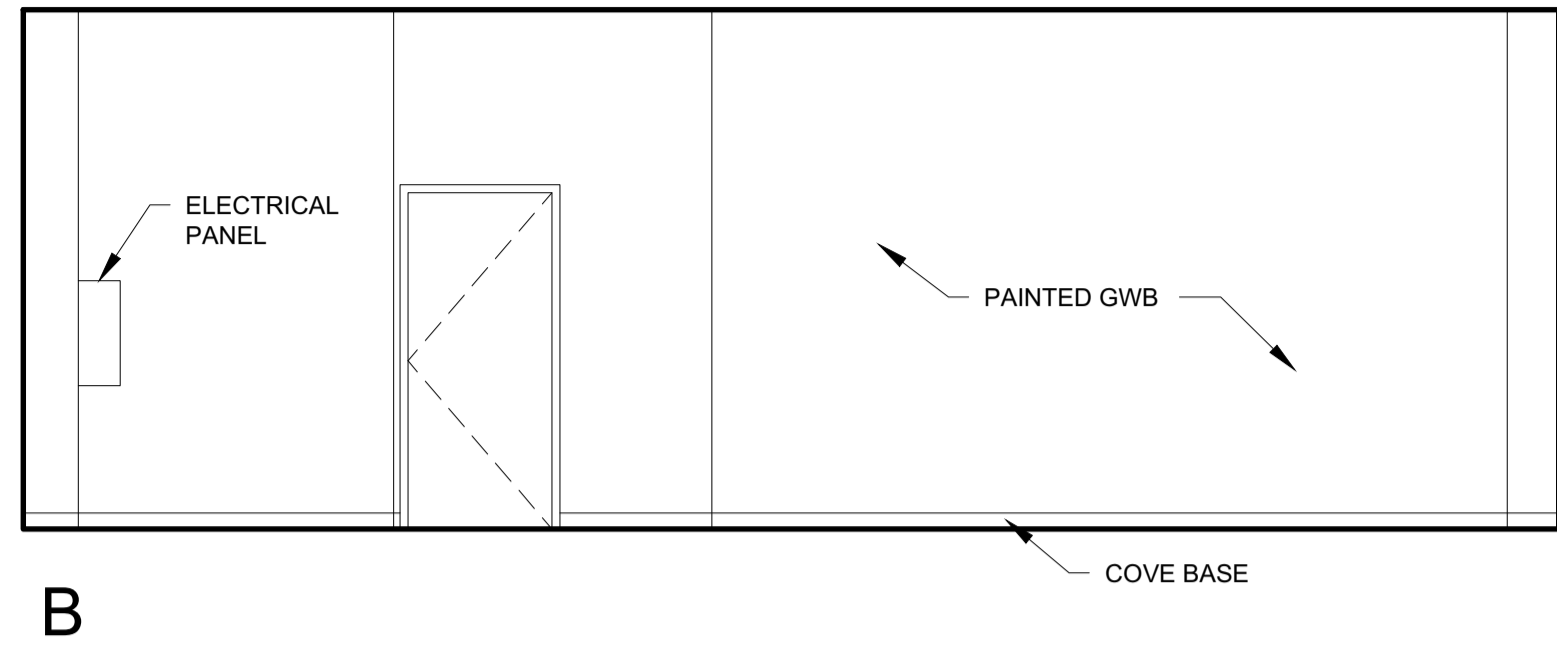
**DATE:** JULY 3, 2015  
**PROJECT No.:** 1415  
**DRAWN BY:** RRT / RJS  
**CHECKED BY:** RJS  
**SCALE:** AS NOTED

**SHEET TITLE:**  
**COMMERCIAL SPACE #1 (100) PLANS AND INTERIOR ELEVATIONS**

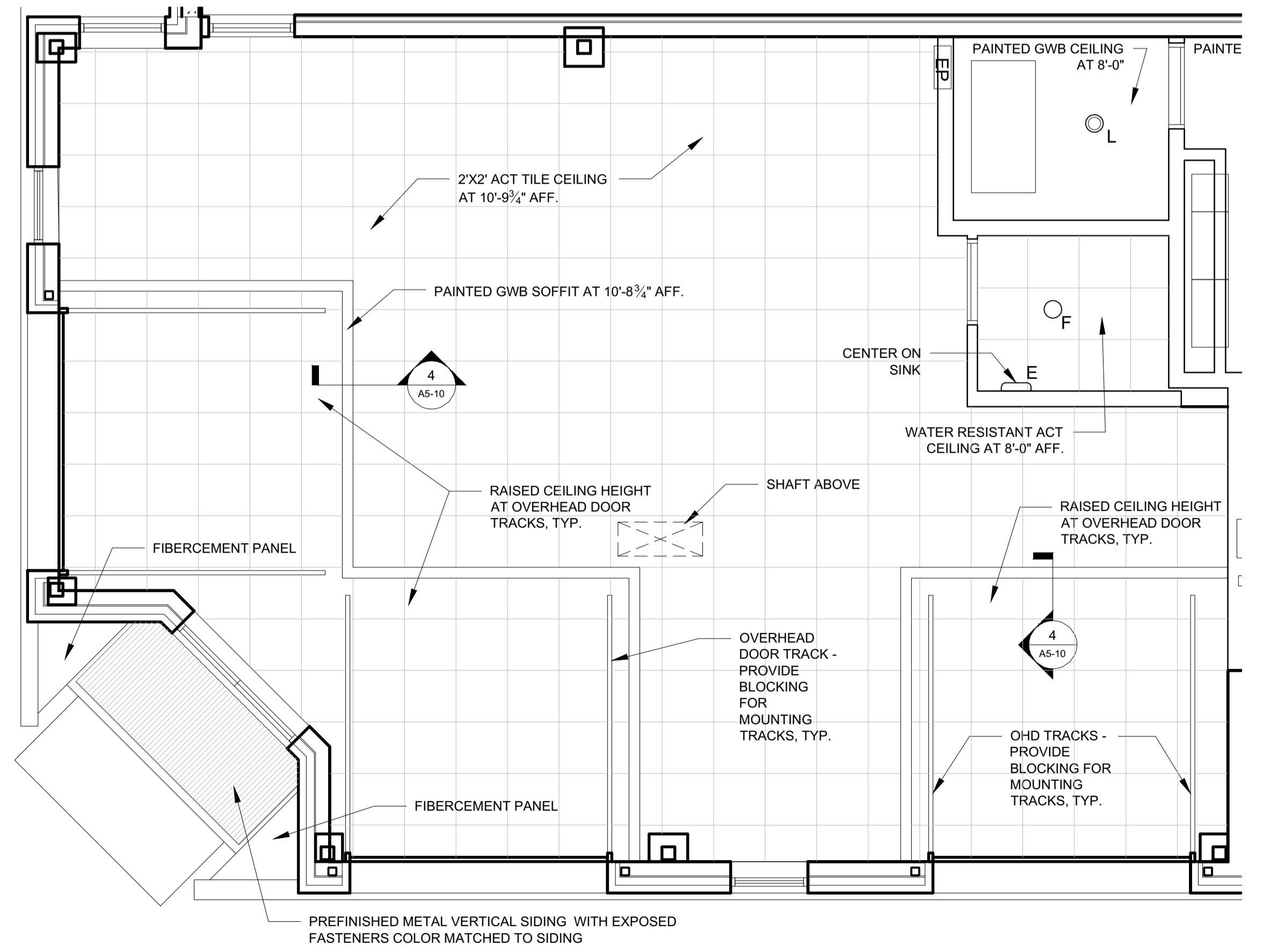
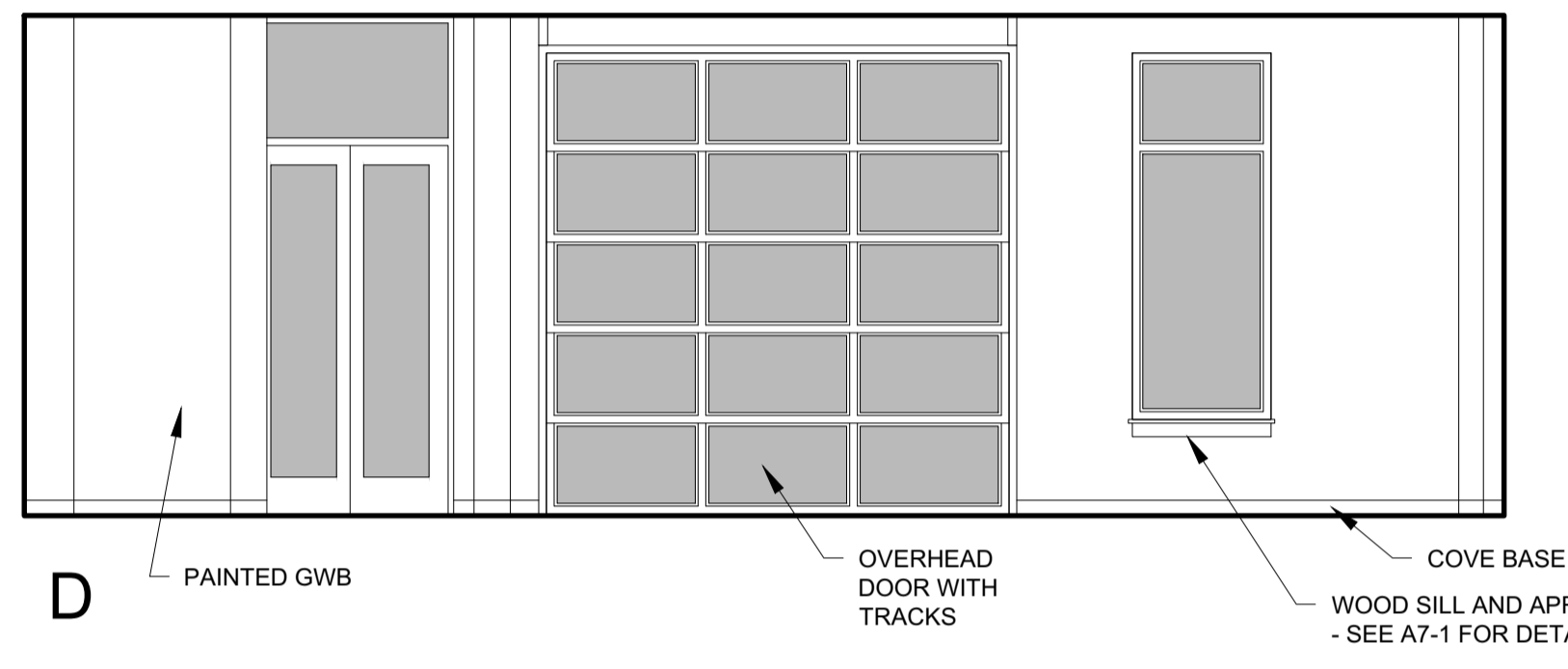
**A1-26**



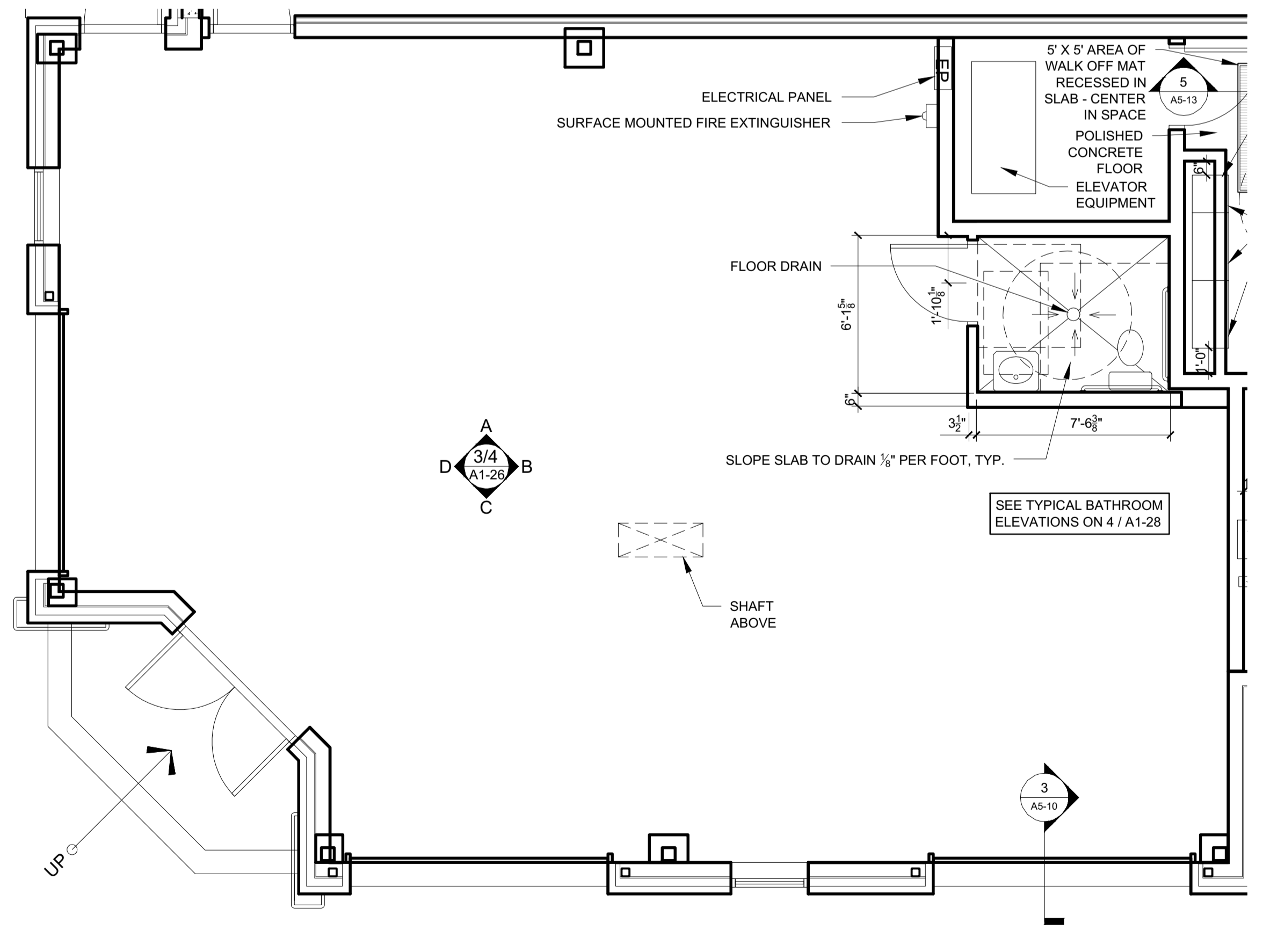
**3 COMMERCIAL SPACE #1 INTERIOR ELEVATIONS**  
1/4" = 1'-0"



**4 COMMERCIAL SPACE #1 INTERIOR ELEVATIONS**  
1/4" = 1'-0"



**2 COMMERCIAL SPACE #1 (100) REFLECTED CEILING PLAN**  
1/4" = 1'-0"



**1 COMMERCIAL SPACE #1 (100) PLANS**  
1/4" = 1'-0"

- UNIT NOTES**
- 1.) CEILING HEIGHTS, WINDOW HEAD AND SILL HEIGHTS VARY FROM FLOOR TO FLOOR. INTERIOR ELEVATIONS GRAPHICALLY DEPICT ONE FLOOR ONLY. FOR HEIGHT INFORMATION REFER TO BUILDING SECTIONS AND WALL SECTIONS
  - 2.) G.C. TO CONFIRM AND COORDINATE ALL ROUGH FRAMING DIMENSIONS FOR TUBS, SHOWERS, BUILT-IN FIXTURES ETC. G.C. TO CONFIRM AND COORDINATE ALL CABINETRY AND APPLIANCE DIMENSIONS
  - 3.) PROVIDE APPROPRIATE BLOCKING IN WALLS BEHIND ALL FIXTURES, PARTITIONS AND ACCESSORIES. BLOCKING FOR GRAB BARS TO BE PROVIDED IN WALLS OF BATHROOMS IN ALL UNITS
  - 4.) PROVIDE MOISTURE RESISTANT GWB AT ALL WALLS AND CEILINGS IN BATHROOMS TYPICAL
  - 5.) SET ALL CLOTHES WASHERS IN PANS WITH WATER SENSOR
  - 6.) REFER TO ELECTRICAL AND MECHANICAL DRAWINGS FOR ADDITIONAL INFORMATION REGARDING LIGHTING, DIFFUSERS, ETC.
  - 7.) PROVIDE FIRE EXTINGUISHER ON BRACKET IN BASE CABINET BELOW KITCHEN SINK - TYPICAL
  - 8.) HANG HOT WATER HEARER FROM CEILING ABOVE CLOTHES ROD IN CLOSET. PROVIDE UNISTRUT SUPPORTS ON TOP OF BOTTOM CHORDS OF TRUSSES PRIOR TO CEILING INSTALLATION
  - 9.) WHERE DROPPED SOFFITS AND CEILINGS ARE SHOWN, THESE ARE IN ADDITION TO THE FIRE RATED GWB CEILING ABOVE WHICH IS PART OF THE RATED ASSEMBLY
  - 10.) WHERE PLUMBING VALVES (TUB, SHOWER, ETC) ARE LOCATED IN FIRE RATED WALLS. PROVIDE FIRE RATED BOX IN WALL FOR VALVE TO BE INSTALLED WITHIN

- CABINETRY AND APPLIANCE ABBREVIATIONS**
- DB = DRAWER BASE
  - DRB = DOOR BASE
  - SB = SINK BASE
  - WC = WALL CABINET
  - WC(24) = WALL CABINET 24" DEEP
  - PU = PANTRY UNIT 24" DEEP
  - OS = OPEN SHELVES
  - RA = RANGE
  - DW = DISHWASHER
  - REF = REFRIGERATOR

**REFLECTED CEILING PLAN AND LIGHTING LEGEND**

SYMBOL	TAG	DESCRIPTION
●	A	TROSS IKEA SURFACE MOUNT
○	B	SURFACE MOUNTED - TBD
○	C	SURFACE MOUNT - IN CLOSETS
○	D	SURFACE MOUNTED ON WALL ABOVE DOOR
○	E	WALL SCONCE IN BATHROOM OVER VANITY
○	F	SURFACE MOUNT - WET LOCATION
○	H	SURFACE MOUNT CENTER IN BEDROOMS
○	J	RECESSED DOWN LIGHT - WET LOCATION
○	K	EXTERIOR CUT OFF DOWN LIGHT
○	L	RECESSED CAN LIGHT FIXTURE
■		CEILING GRILLE