

© 2015 RYAN SENATORE ARCHITECTURE

APARTMENTS  
89 ANDERSON STREET  
PORTLAND, MAINE



RYAN SENATORE  
ARCHITECTURE  
565 CONGRESS STREET  
SUITE 304  
PORTLAND, MAINE 04101  
207-650-6414  
senatorearchitecture.com

CONSULTANTS:  
STRUCTURAL:  
Structural Integrity  
77 Oak Street  
Portland, ME 04101  
207-774-4614

REVISIONS:

DATE: JULY 3, 2015

PROJECT No. 1415

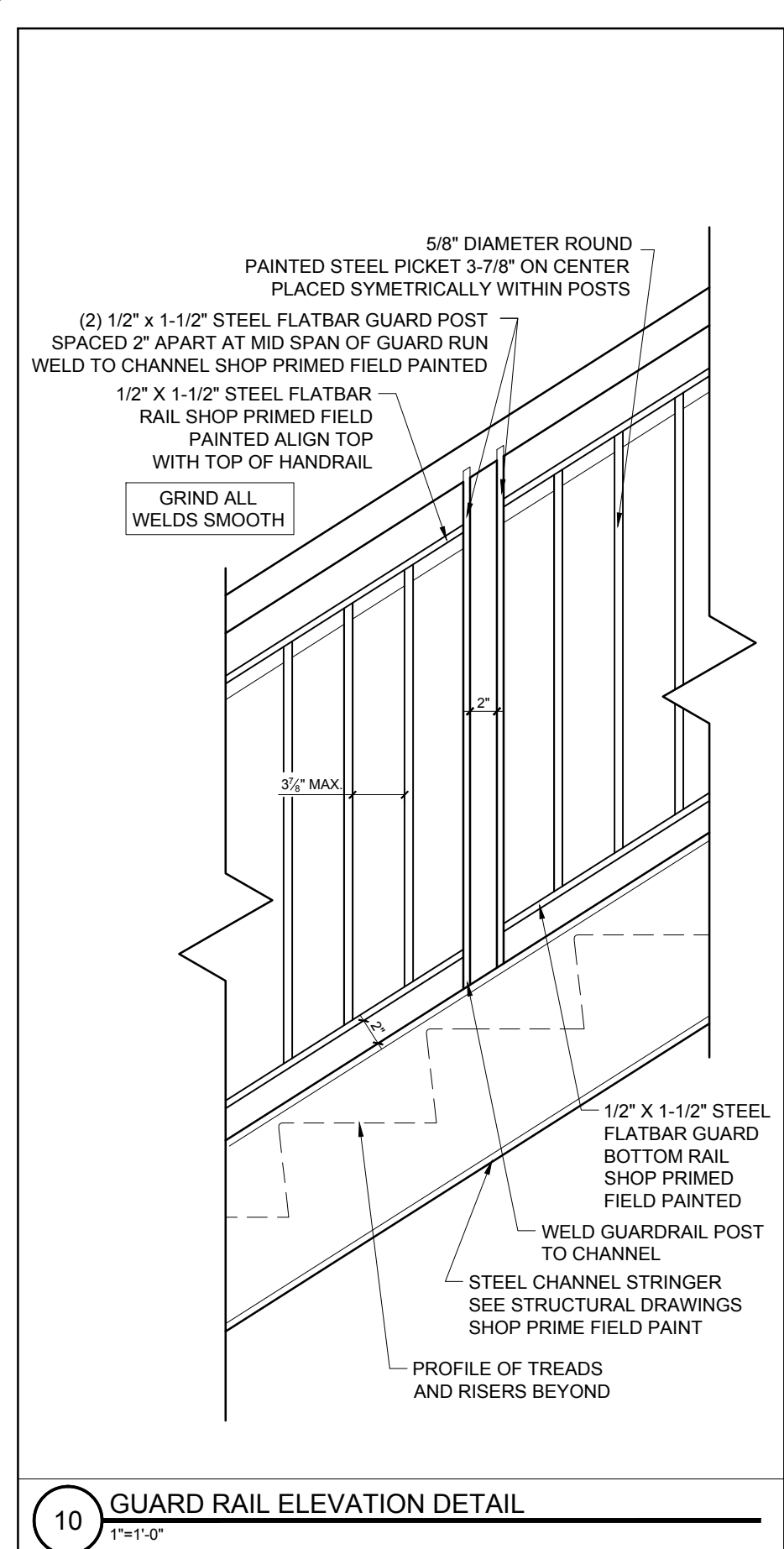
DRAWN BY: RRT / RJS

CHECKED BY: RJS

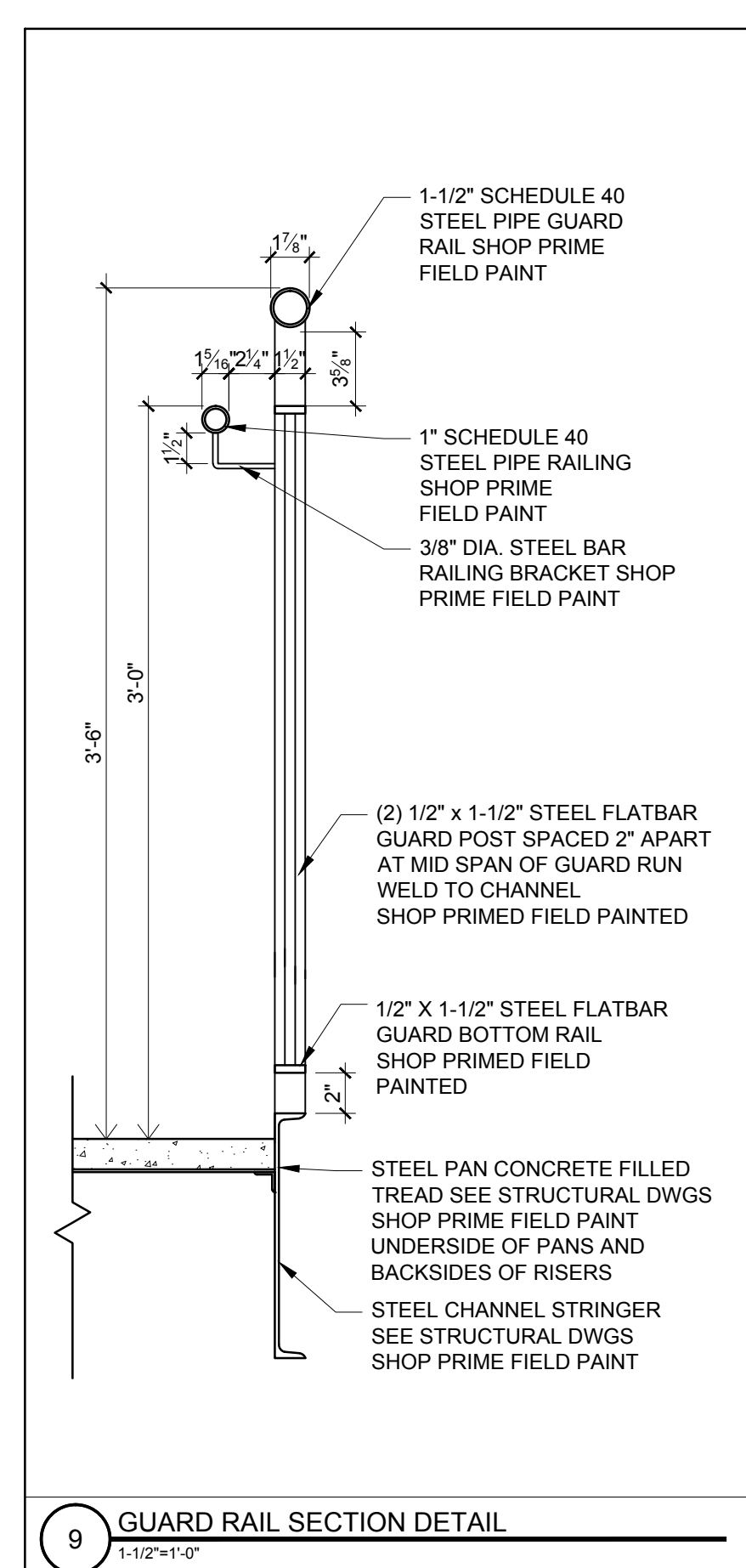
SCALE: AS NOTED

SHEET TITLE:  
SOUTH STAIR  
DETAILS

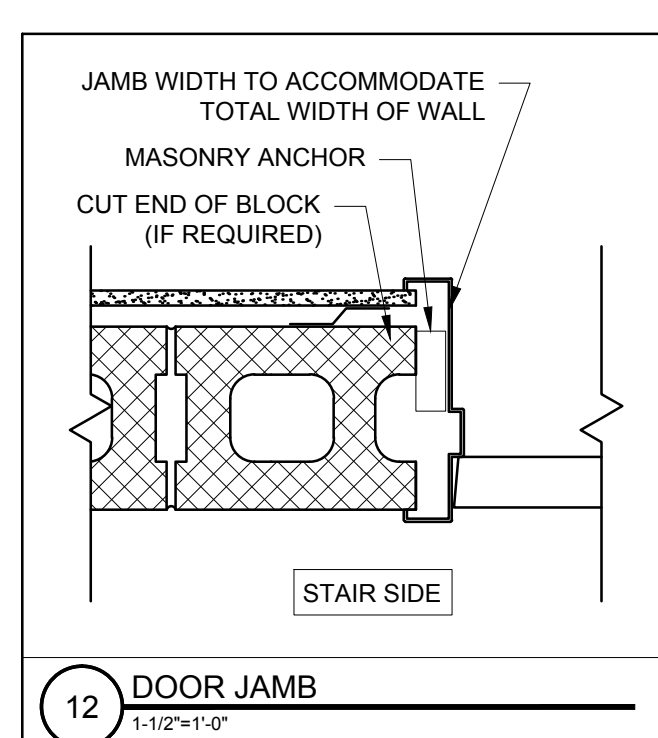
A6-1



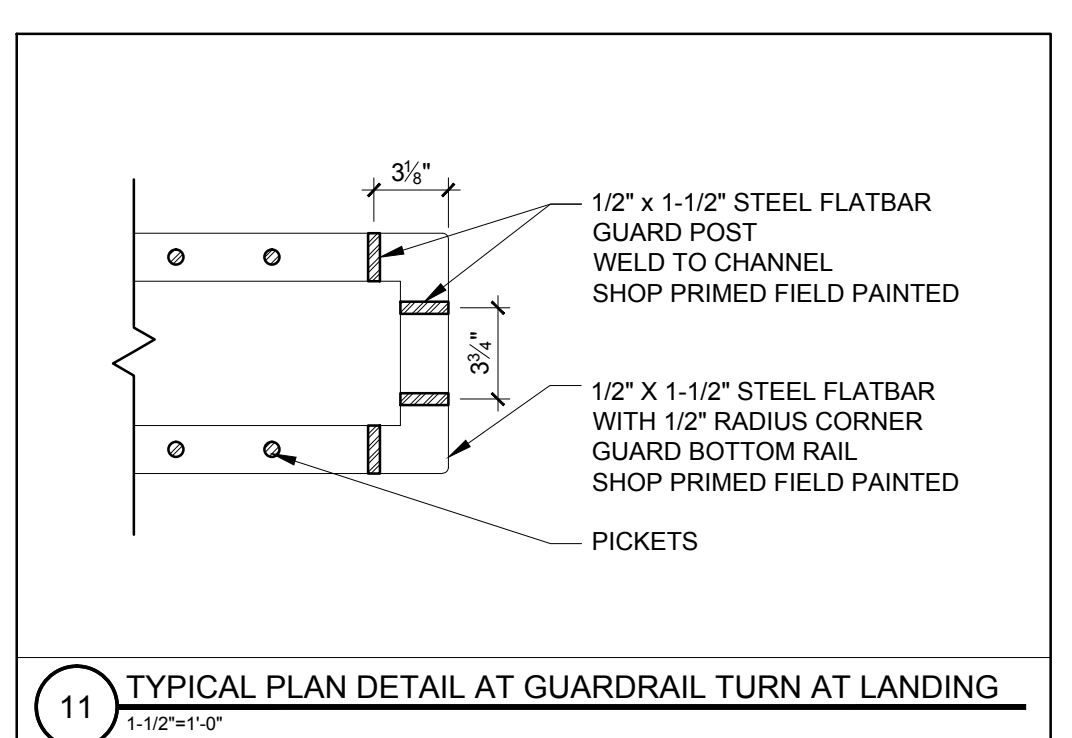
10 GUARD RAIL ELEVATION DETAIL  
1/4\"/>



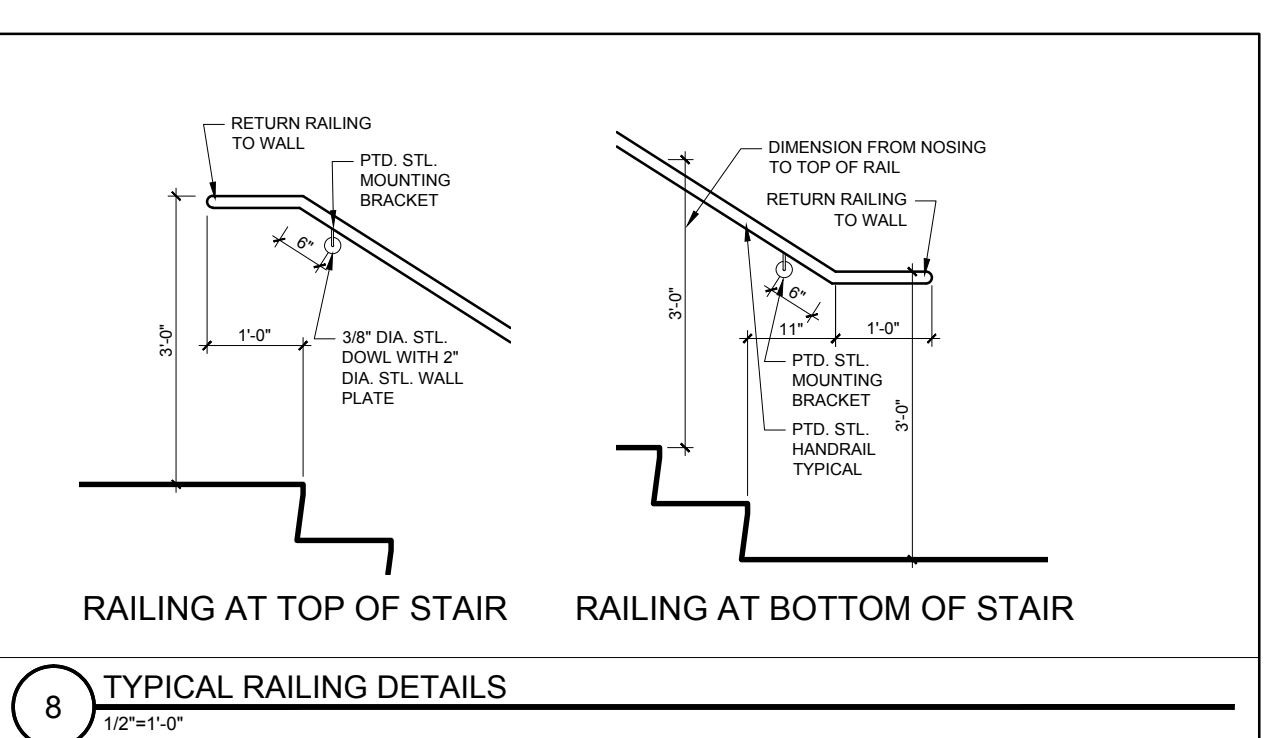
9 GUARD RAIL SECTION DETAIL  
1-1/2\"/>



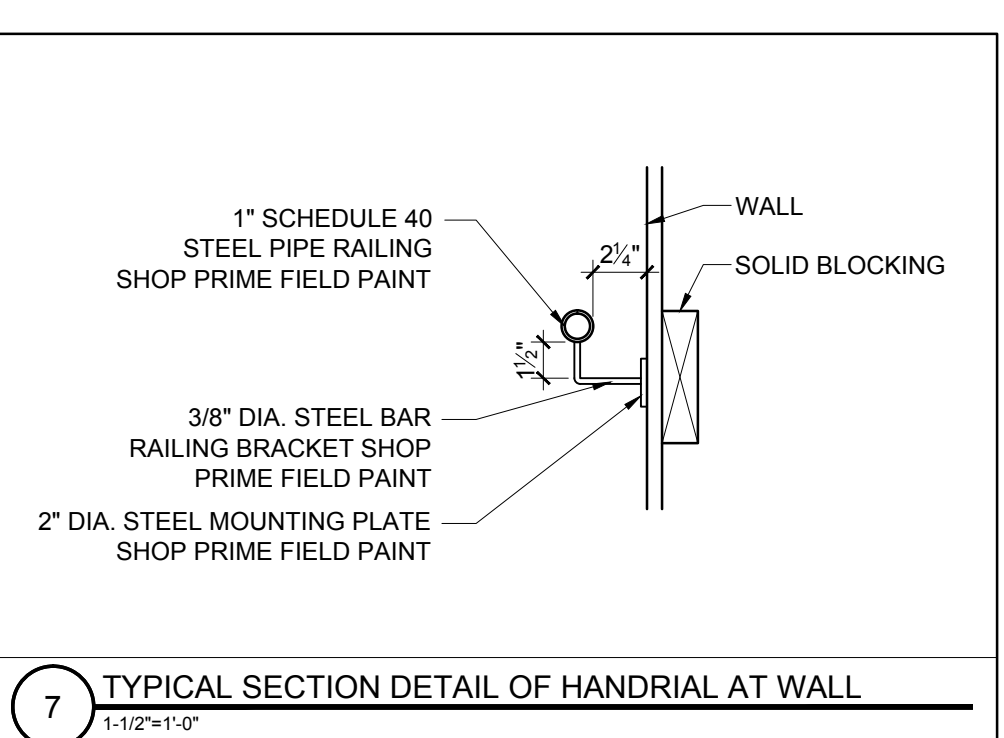
12 DOOR JAMB  
1-1/2\"/>



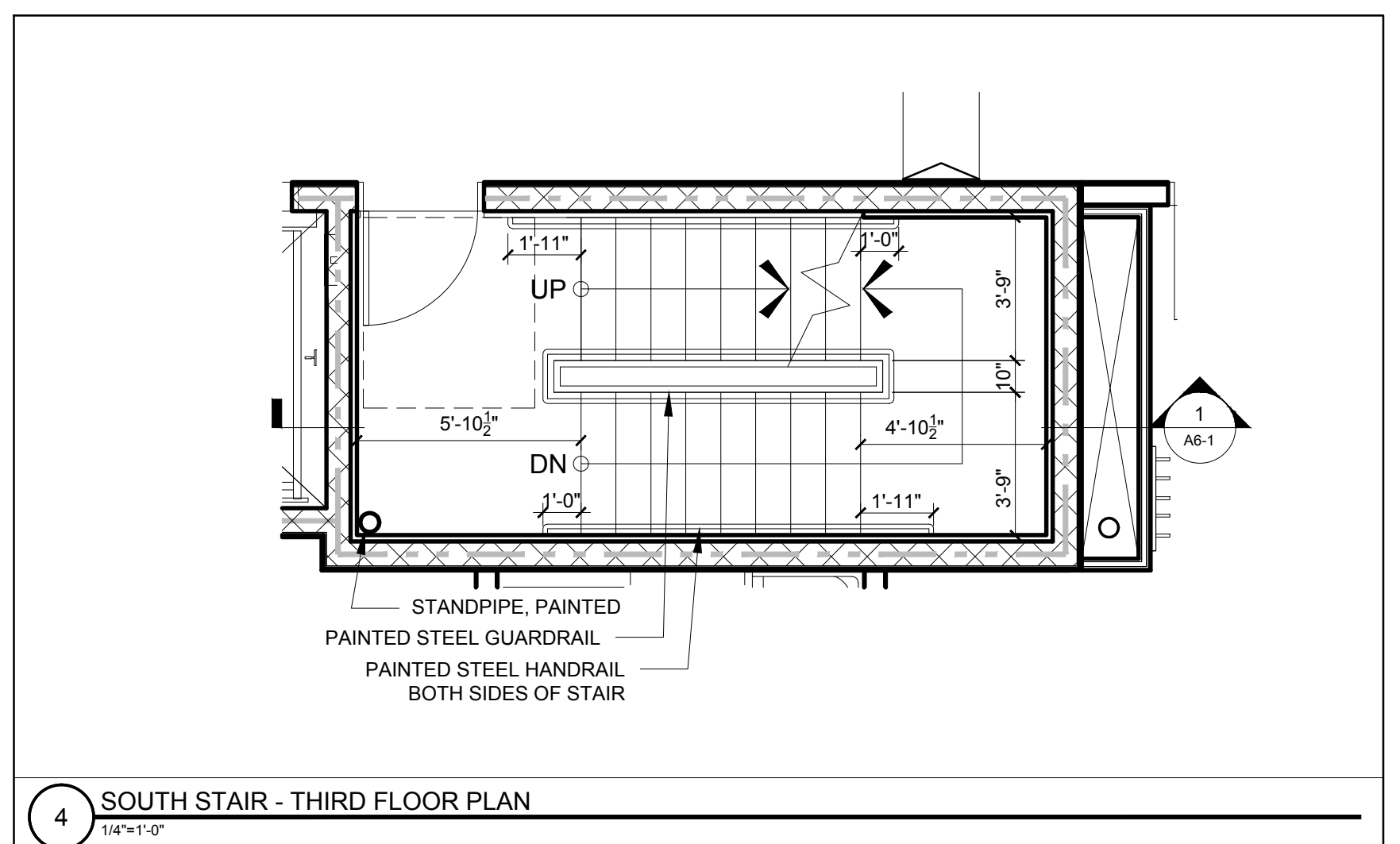
11 TYPICAL PLAN DETAIL AT GUARDRAIL TURN AT LANDING  
1-1/2\"/>



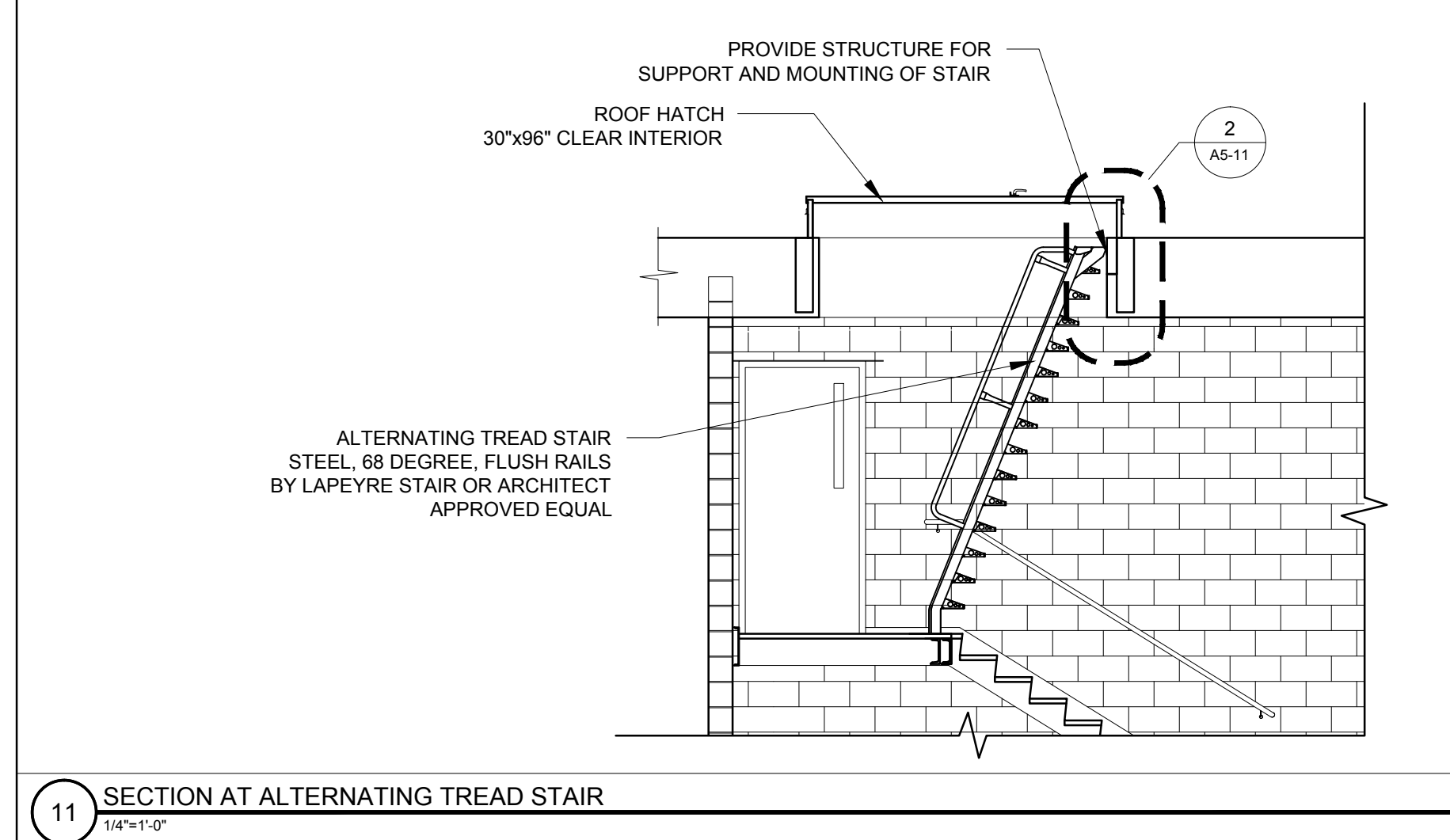
8 TYPICAL RAILING DETAILS  
1/2\"/>



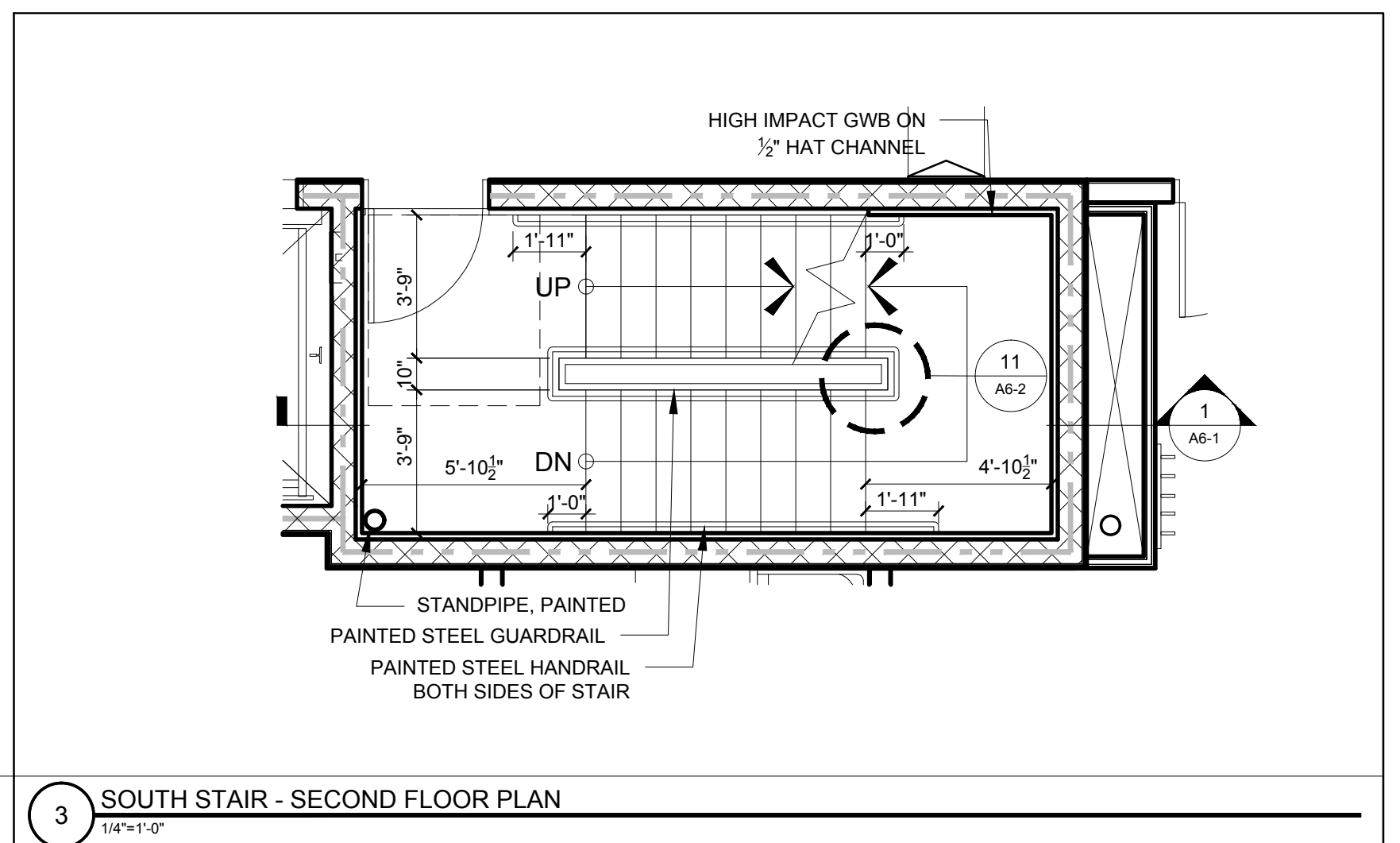
7 TYPICAL SECTION DETAIL OF HANDRAIL AT WALL  
1-1/2\"/>



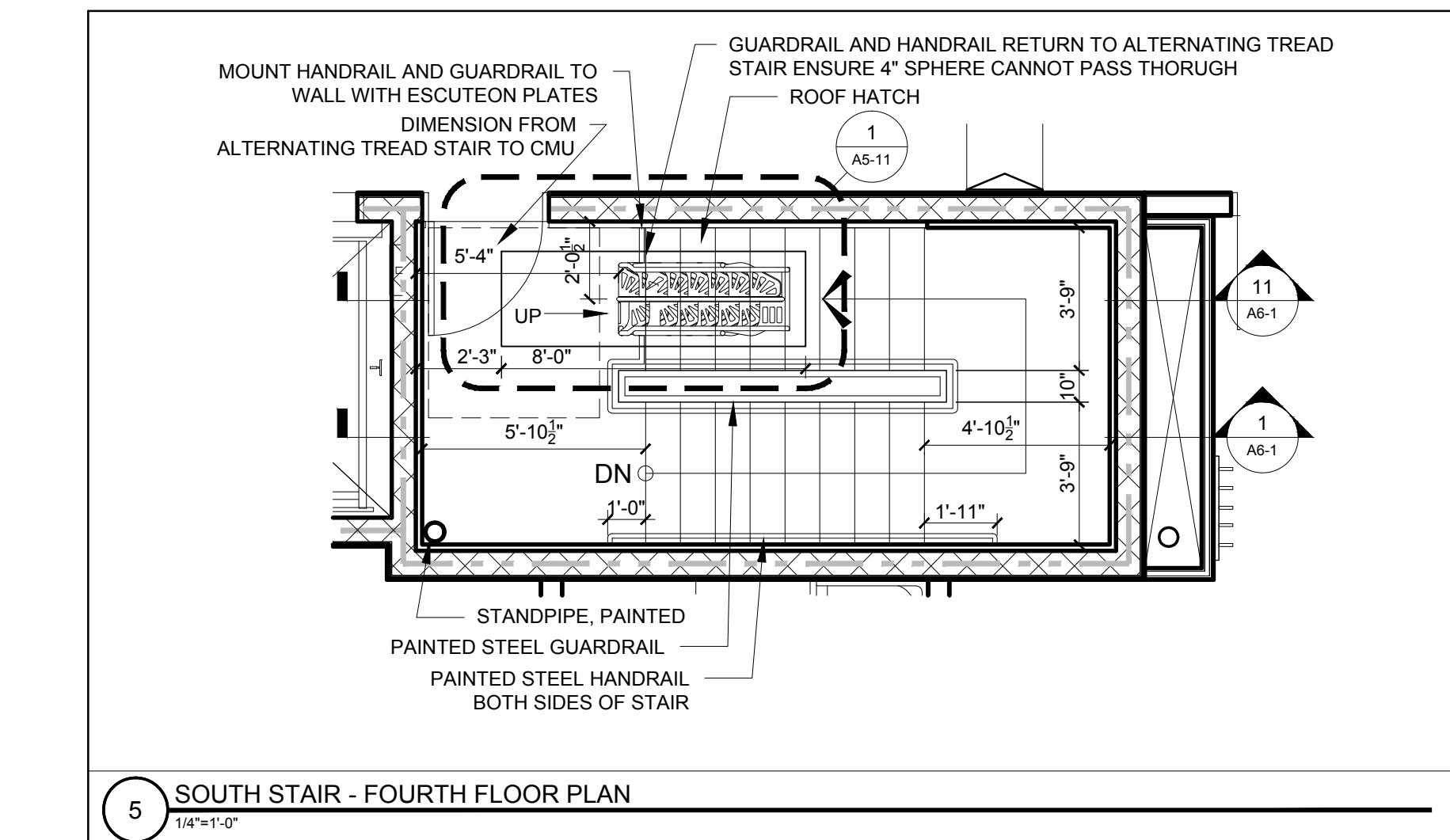
4 SOUTH STAIR - THIRD FLOOR PLAN  
1/4\"/>



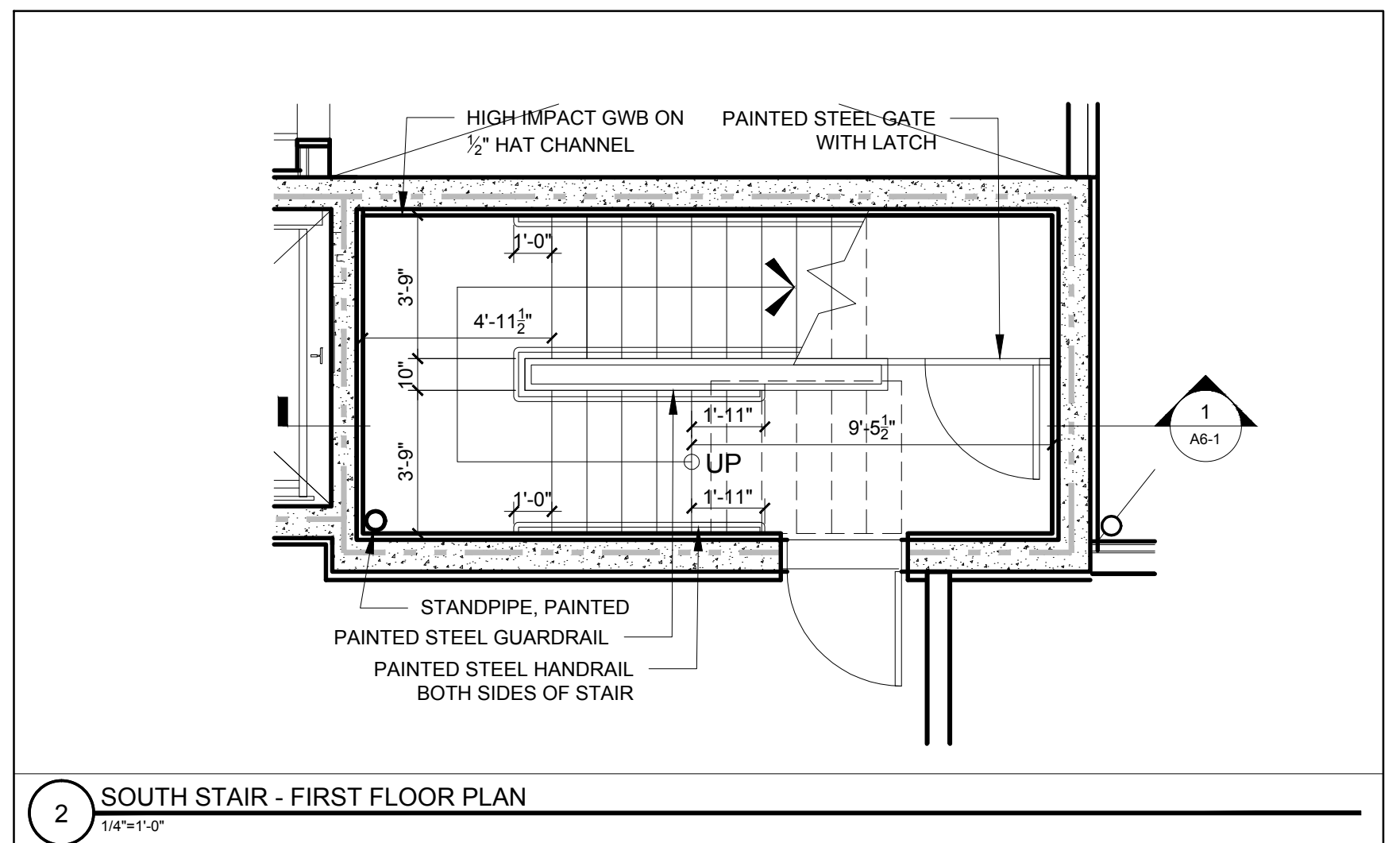
11 SECTION AT ALTERNATING TREAD STAIR  
1/4\"/>



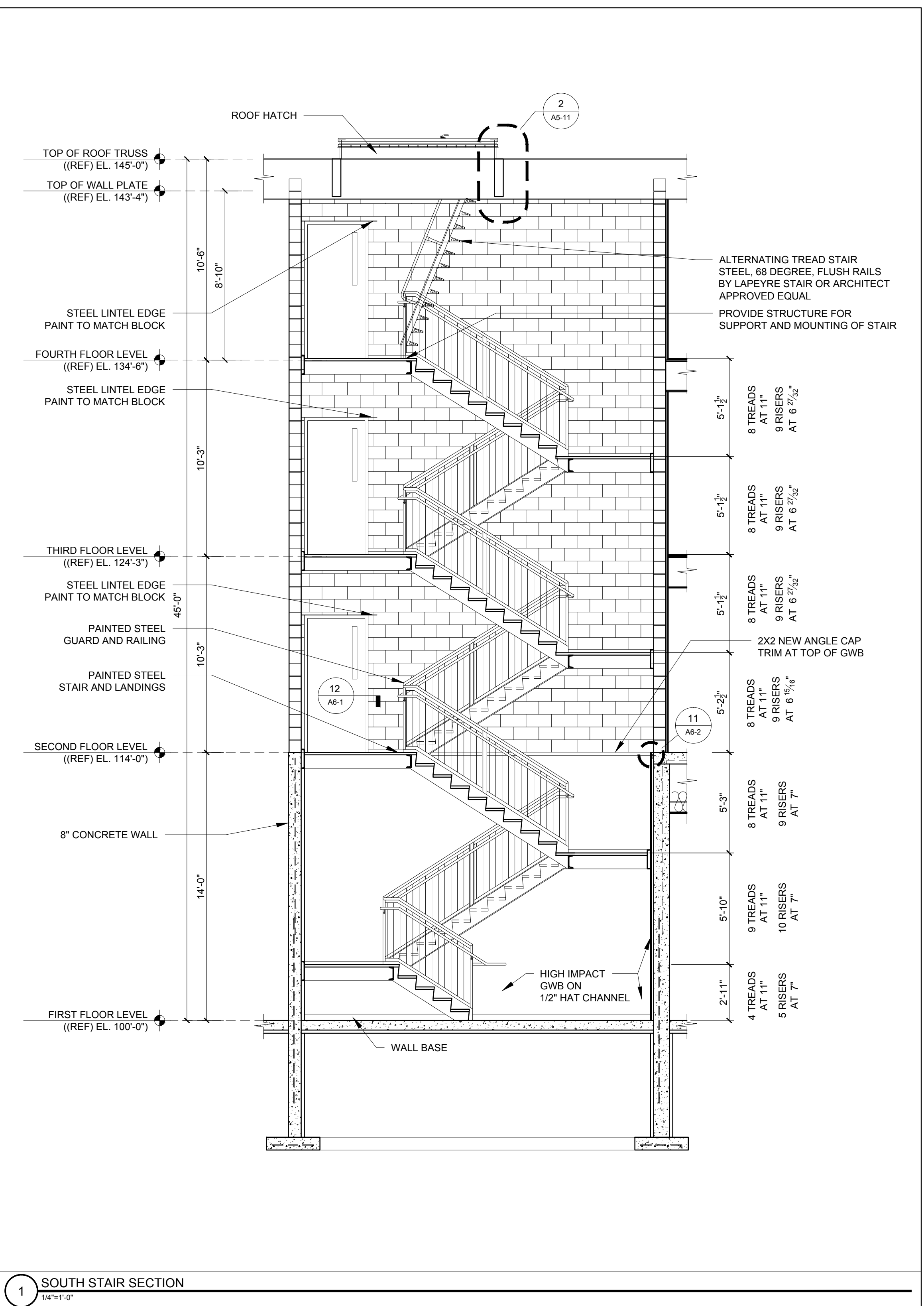
3 SOUTH STAIR - SECOND FLOOR PLAN  
1/4\"/>



5 SOUTH STAIR - FOURTH FLOOR PLAN  
1/4\"/>



2 SOUTH STAIR - FIRST FLOOR PLAN  
1/4\"/>



1 SOUTH STAIR SECTION  
1/8\"/>