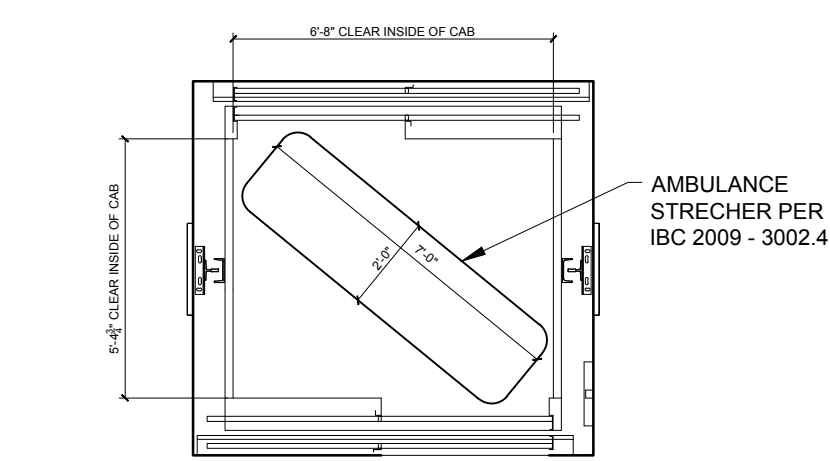
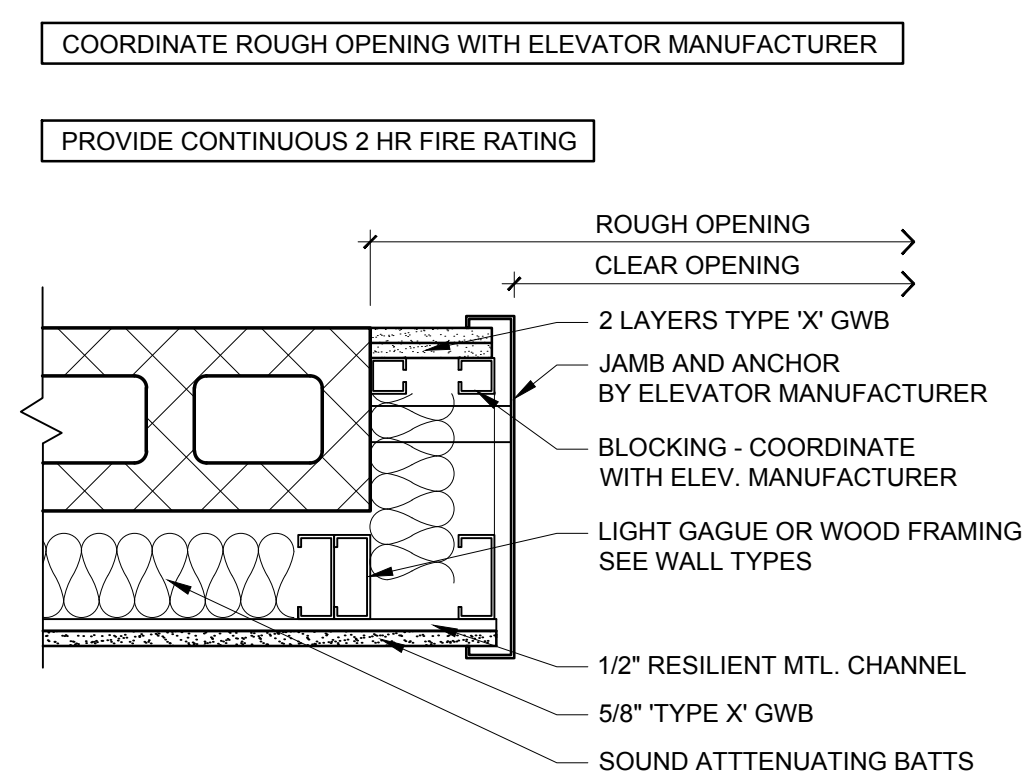


10 ELEVATOR SECTION  
1/4" = 1'-0"

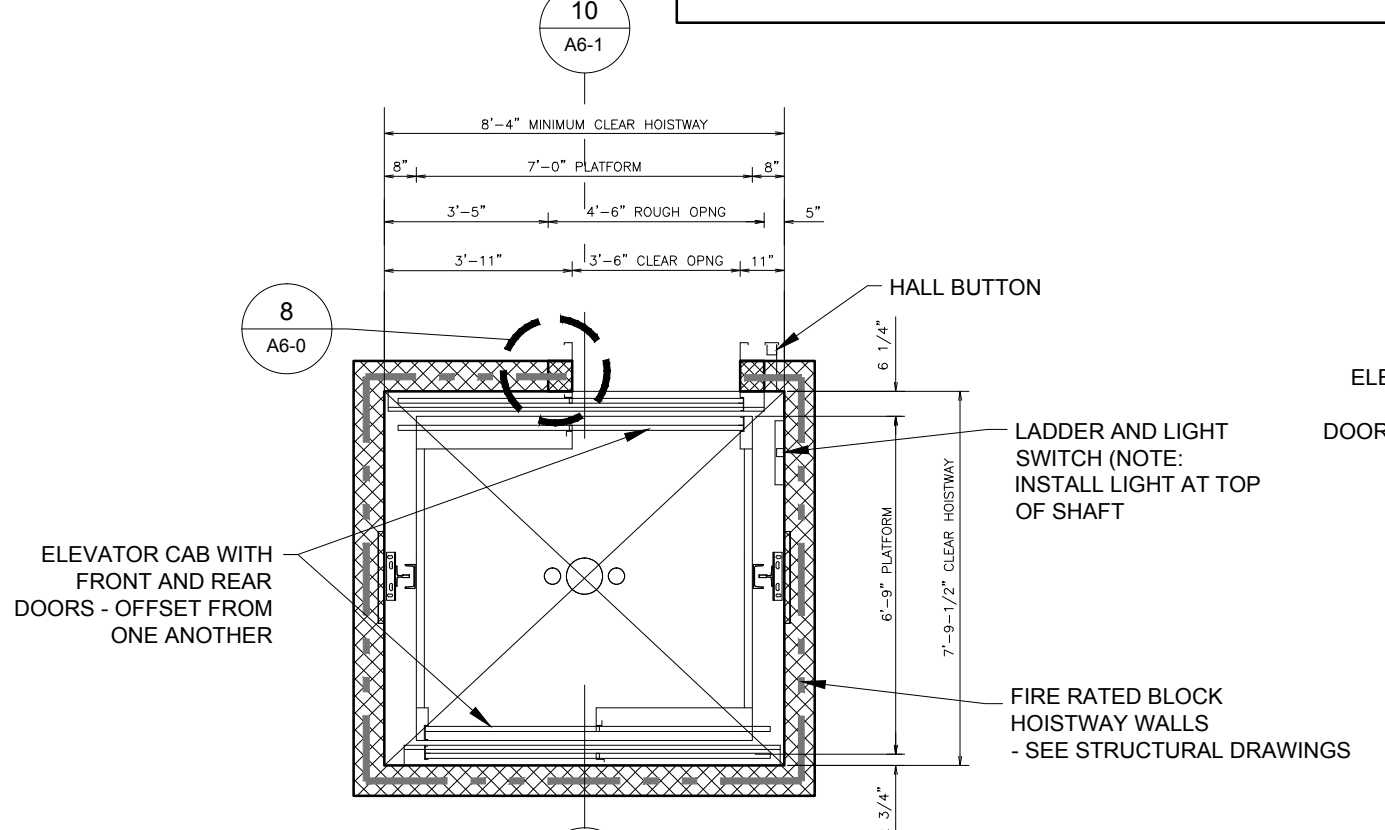


9 ELEVATOR CAB PLAN  
1/4" = 1'-0"

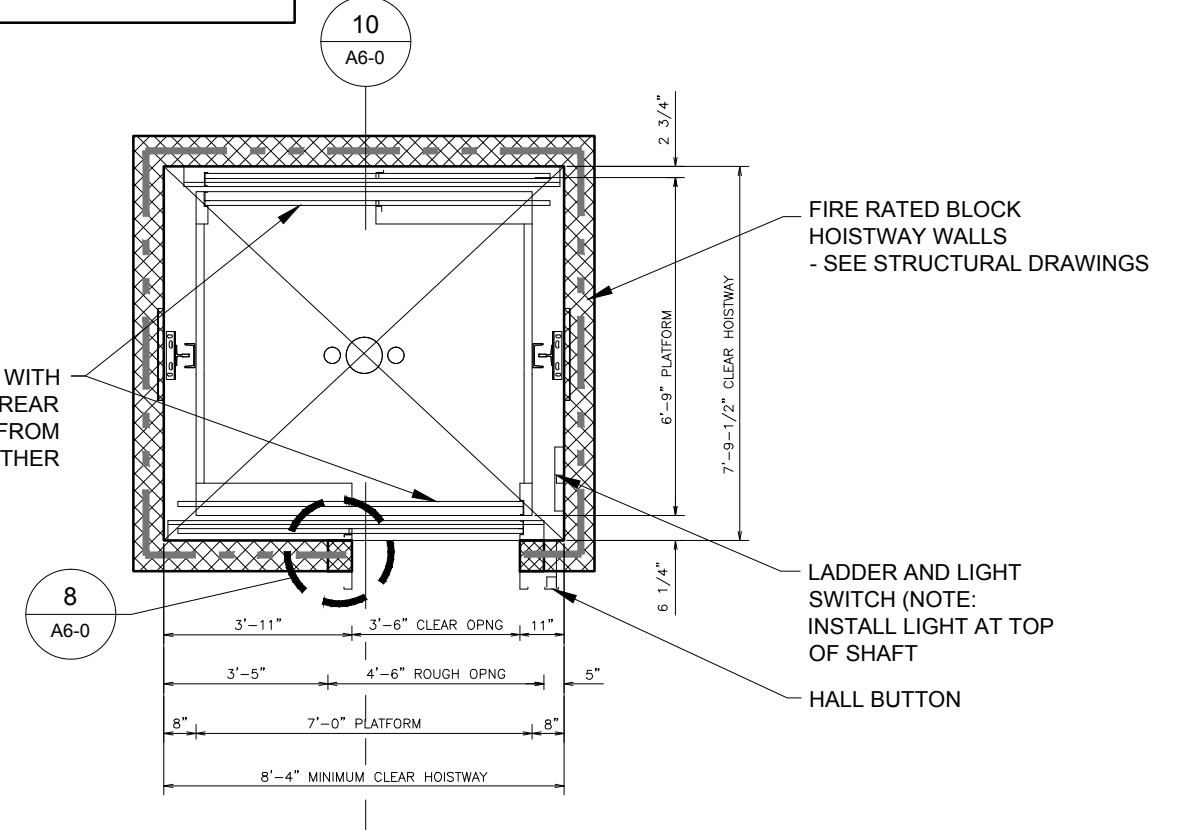


8 TYPICAL ELEVATOR JAMB PLAN DETAIL  
1-1/2" = 1'-0"

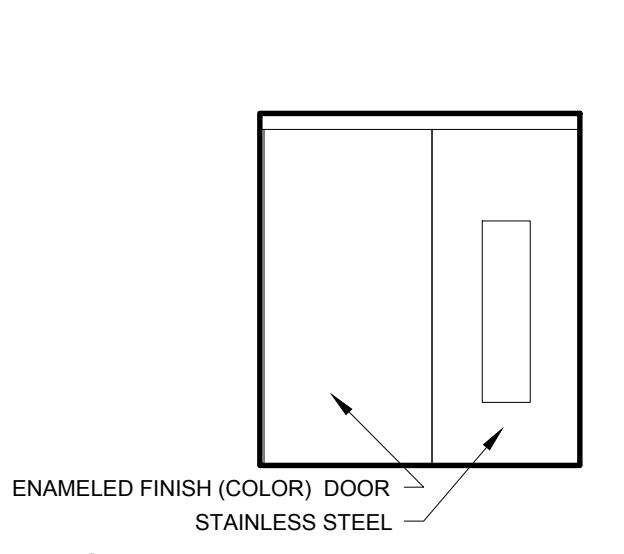
- ELEVATOR NOTES**
- LAYOUT BASED ON 3500LB HOLED HYDRAULIC ELEVATOR WITH FRONT AND REAR DOORS
  - COORDINATE BLOCKWORK WITH ELEVATOR MANUFACTURERS HOISTWAY REQUIREMENTS
  - COORDINATE ROUGH OPENINGS WITH ELEVATOR MANUFACTURERS HOISTWAY REQUIREMENTS
  - ELEVATOR MUST MEET ADA ACCESSIBILITY REQUIREMENTS
  - ELEVATOR DOORS TO HAVE KEY FAB ACCESS CONTROL FOR RESIDENTIAL USES



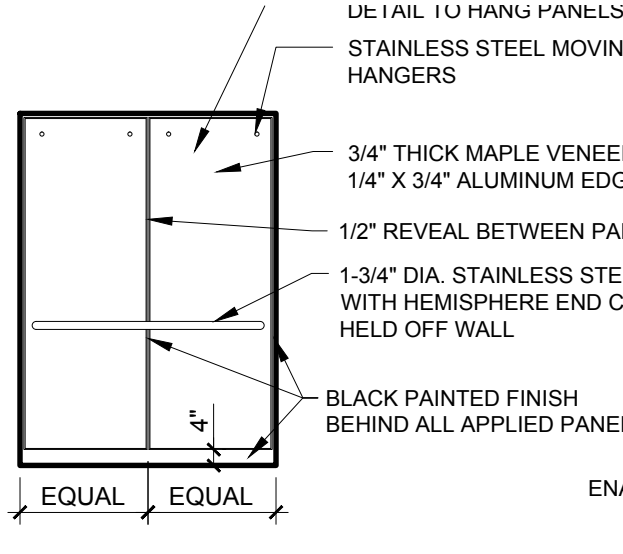
7 SECOND, THIRD AND FOURTH FLOOR ELEVATOR PLAN  
1/4" = 1'-0"



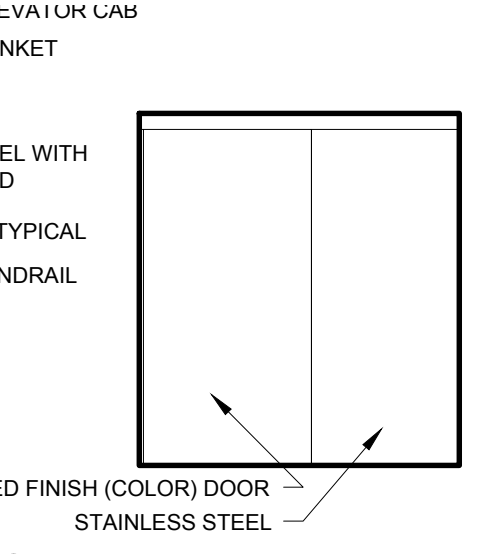
6 FIRST FLOOR ELEVATOR PLAN  
1/4" = 1'-0"



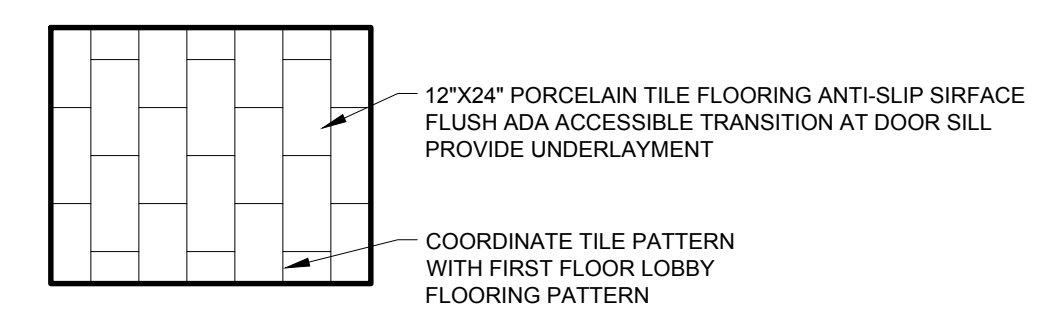
5 FRONT CAB ELEVATION  
1/4" = 1'-0"



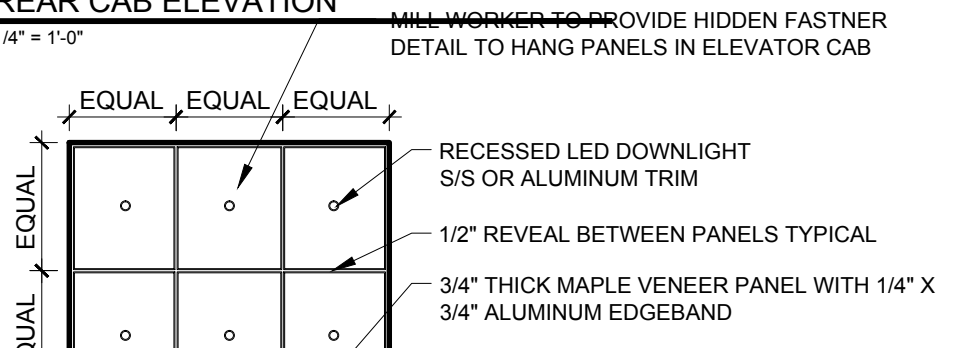
3 SIDE CAB ELEVATION  
1/4" = 1'-0"



2 REAR CAB ELEVATION  
1/4" = 1'-0"



4 FLOORING PLAN  
1/4" = 1'-0"



1 ELEVATOR REFLECTED CEILING PLAN  
1/4" = 1'-0"



© 2015 RYAN SENATORE ARCHITECTURE

**APARTMENTS**  
89 ANDERSON STREET  
PORTLAND, MAINE



**RYAN SENATORE ARCHITECTURE**  
565 CONGRESS STREET  
SUITE 304  
PORTLAND, MAINE 04101  
207-650-6414  
senatorearchitecture.com

CONSULTANTS:

**STRUCTURAL:**  
Structural Integrity  
77 Oak Street  
Portland, ME 04101  
207-774-4614

REVISIONS:

DATE: JULY 3, 2015

PROJECT No. 1415

DRAWN BY: RRT / RJS

CHECKED BY: RJS

SCALE: AS NOTED

SHEET TITLE:  
**ELEVATOR DETAILS**

**A6-0**