



© 2015 RYAN SENATORE ARCHITECTURE

APARTMENTS
89 ANDERSON STREET
PORTLAND, MAINE



RYAN SENATORE
ARCHITECTURE
565 CONGRESS STREET
PORTLAND, MAINE 04101
207-650-6414
senatorearchitecture.com

CONSULTANTS:

STRUCTURAL:
Structural Integrity
77 Oak Street
Portland, ME 04101
207-774-4614

REVISIONS:

DATE: JULY 3, 2015

PROJECT No. 1415

DRAWN BY: RRT / RJS

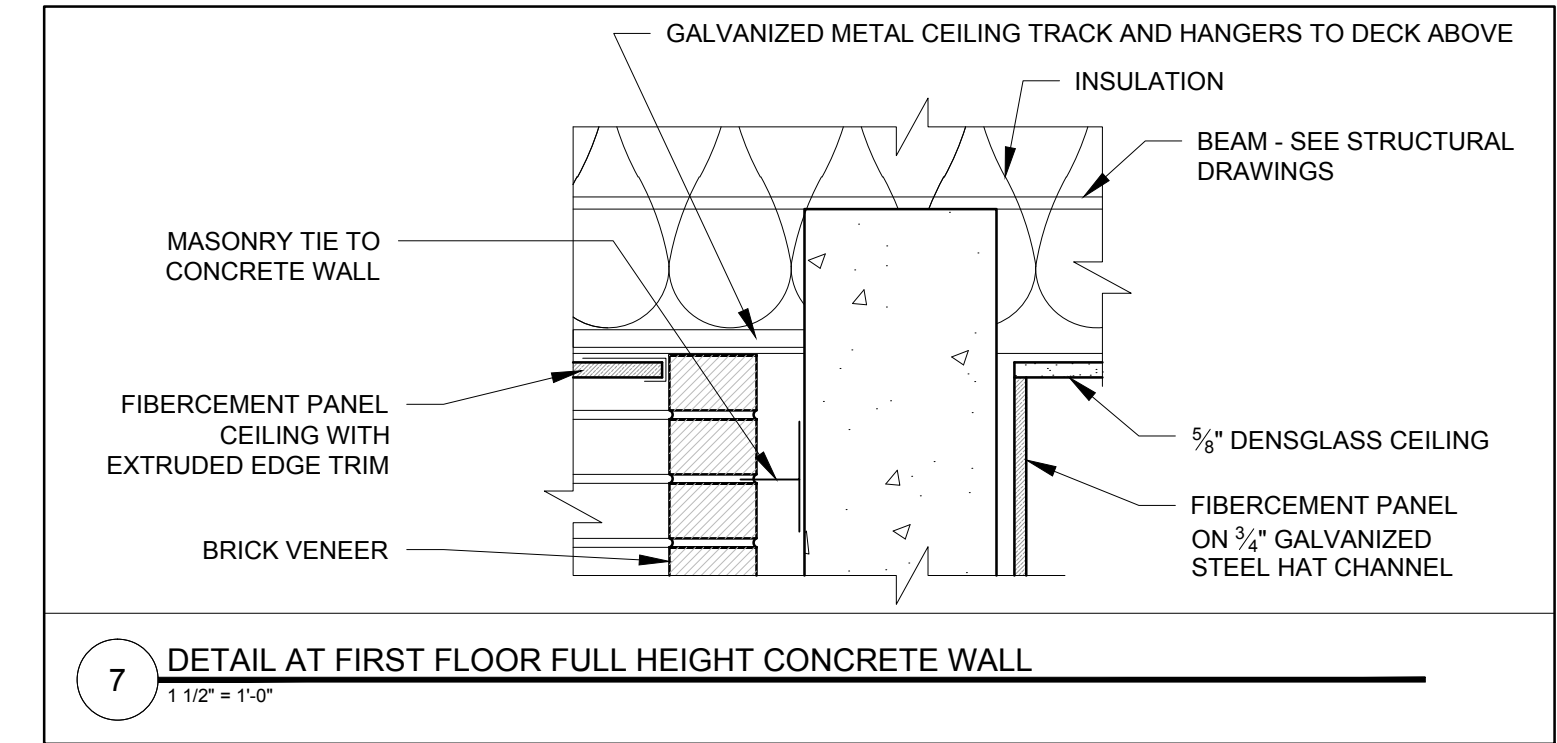
CHECKED BY: RJS

SCALE: AS NOTED

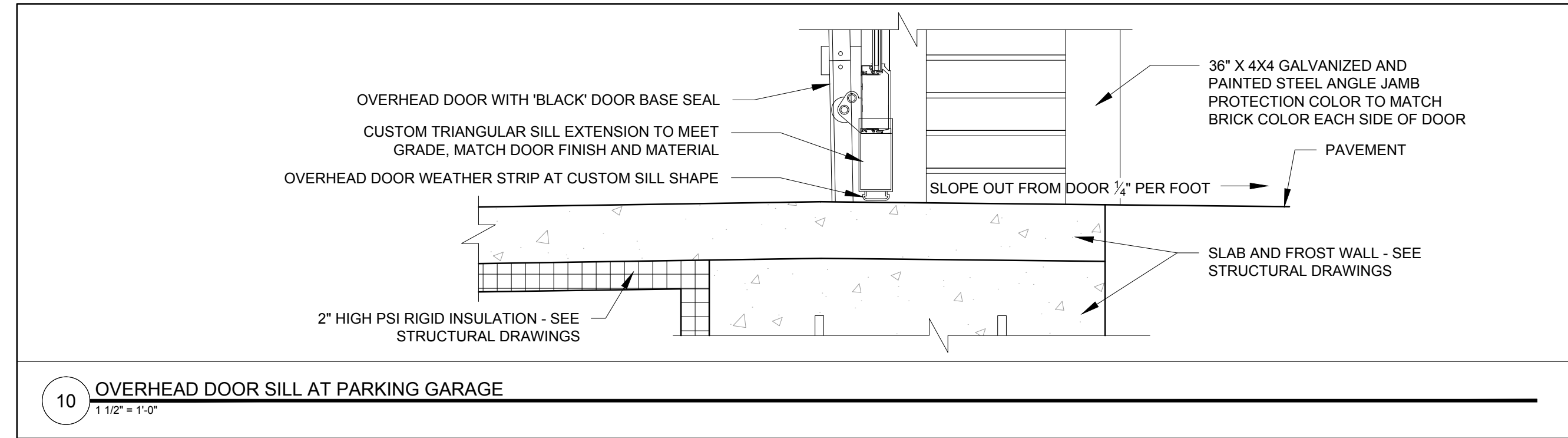
SHEET TITLE:

DETAILS

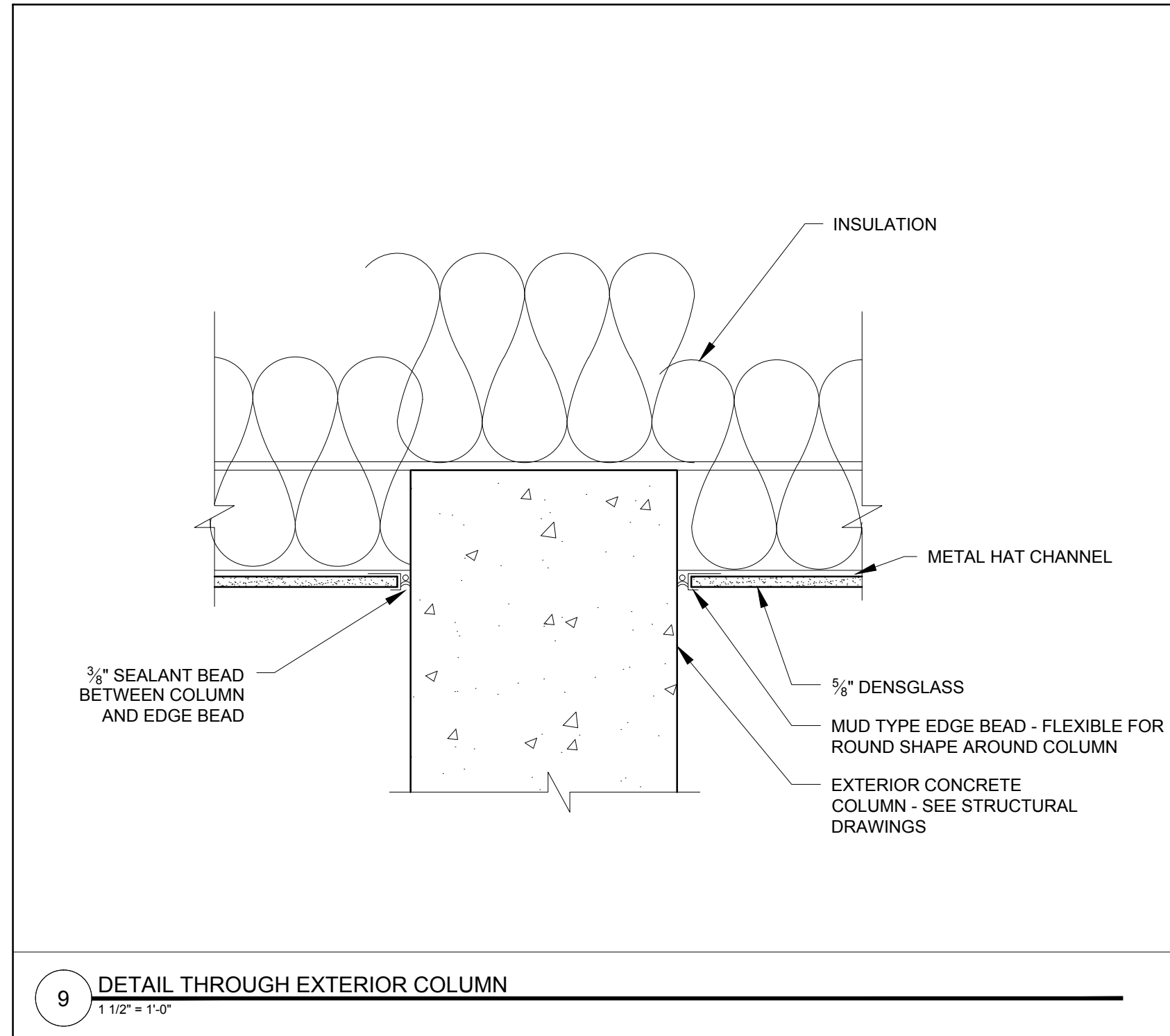
A5-9



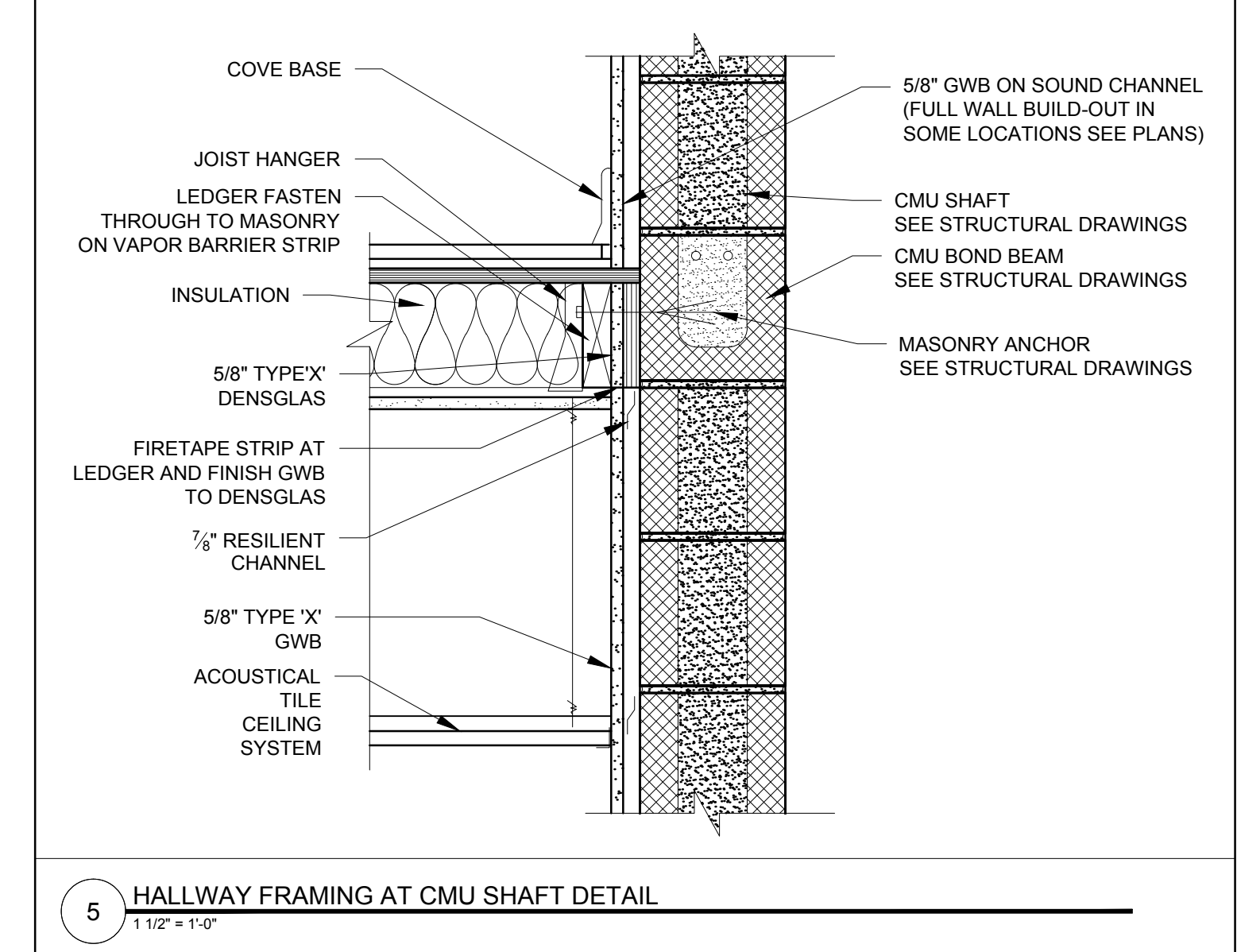
7 DETAIL AT FIRST FLOOR FULL HEIGHT CONCRETE WALL
1 1/2" = 1'-0"



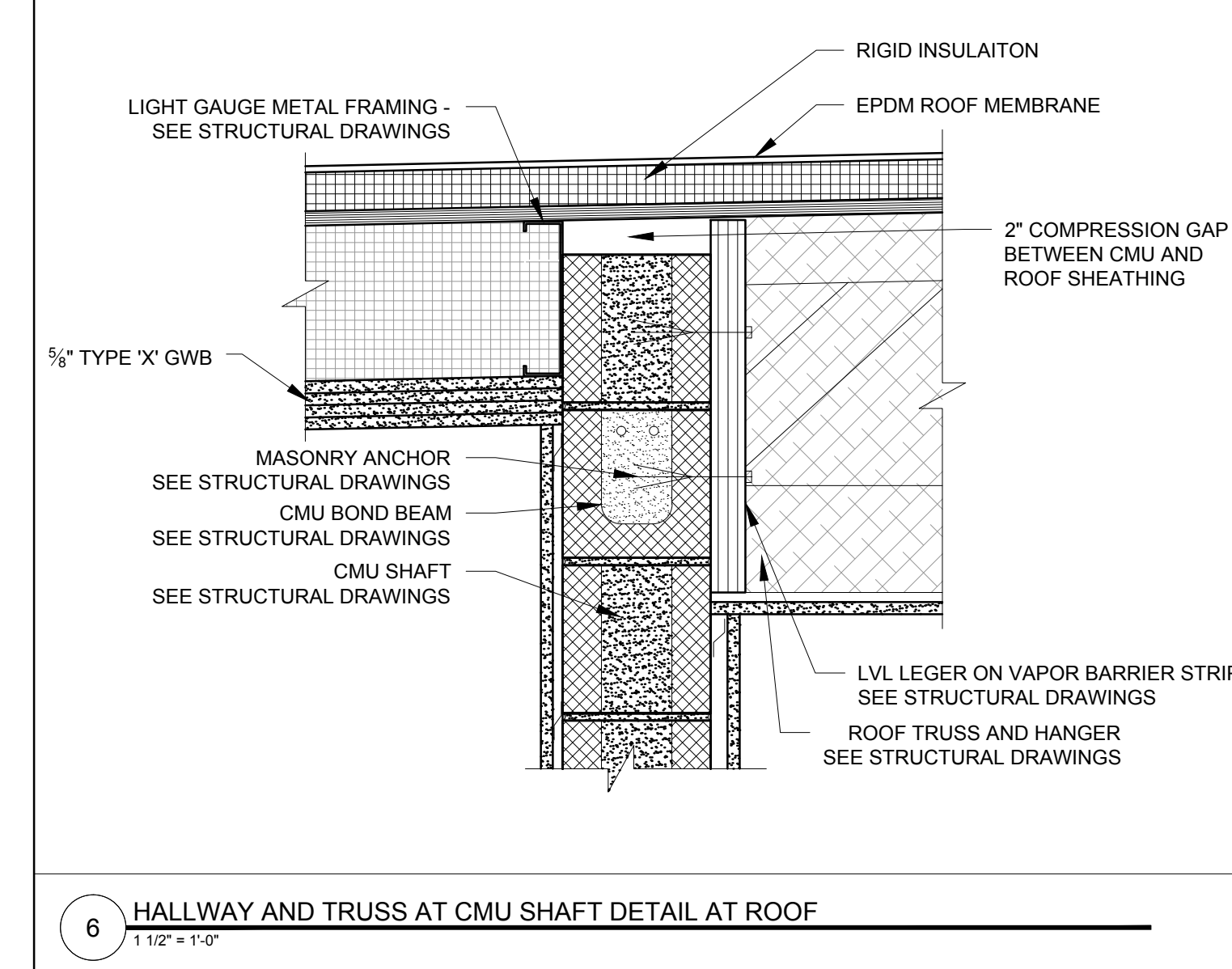
10 OVERHEAD DOOR SILL AT PARKING GARAGE
1 1/2" = 1'-0"



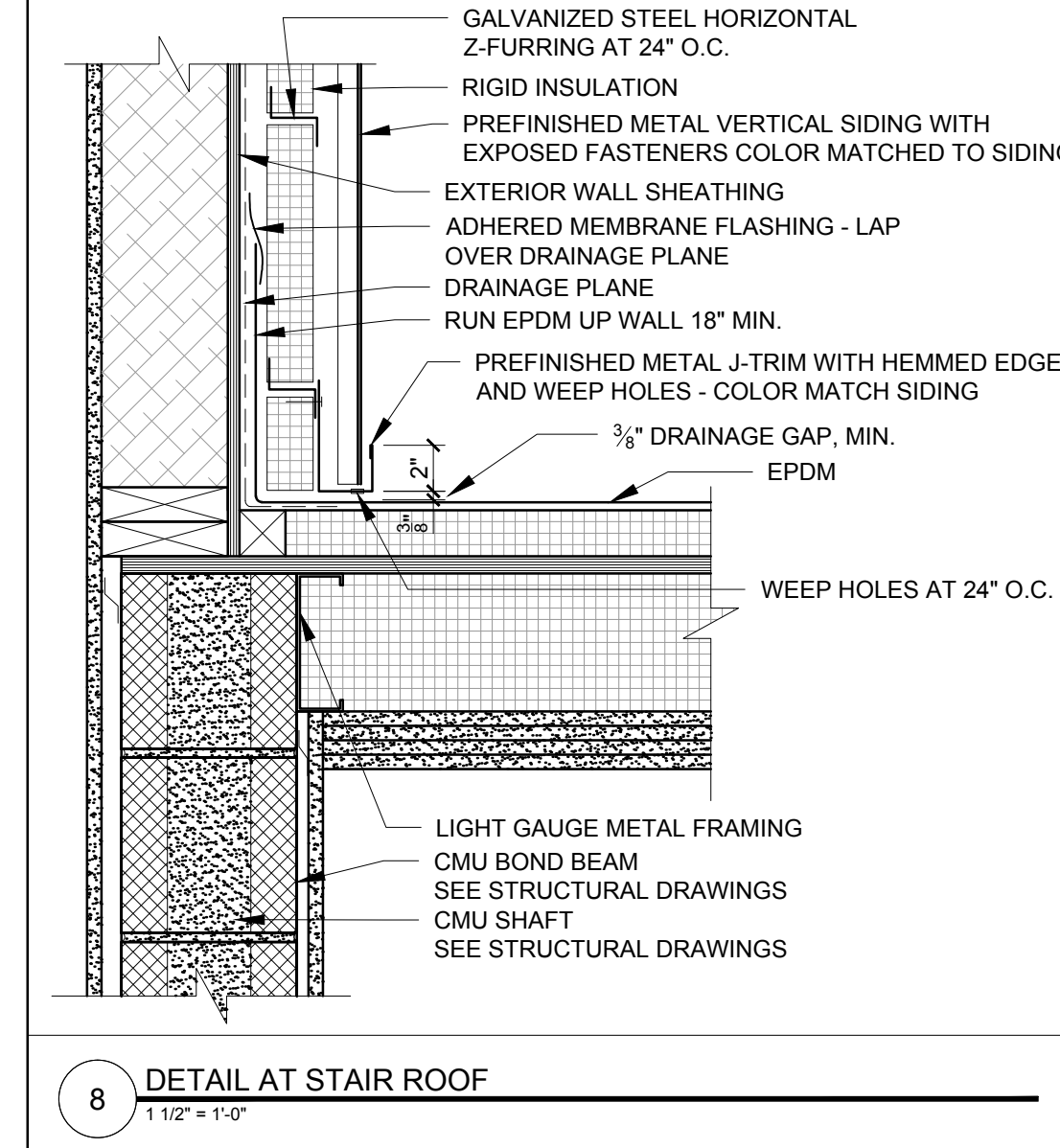
9 DETAIL THROUGH EXTERIOR COLUMN
1 1/2" = 1'-0"



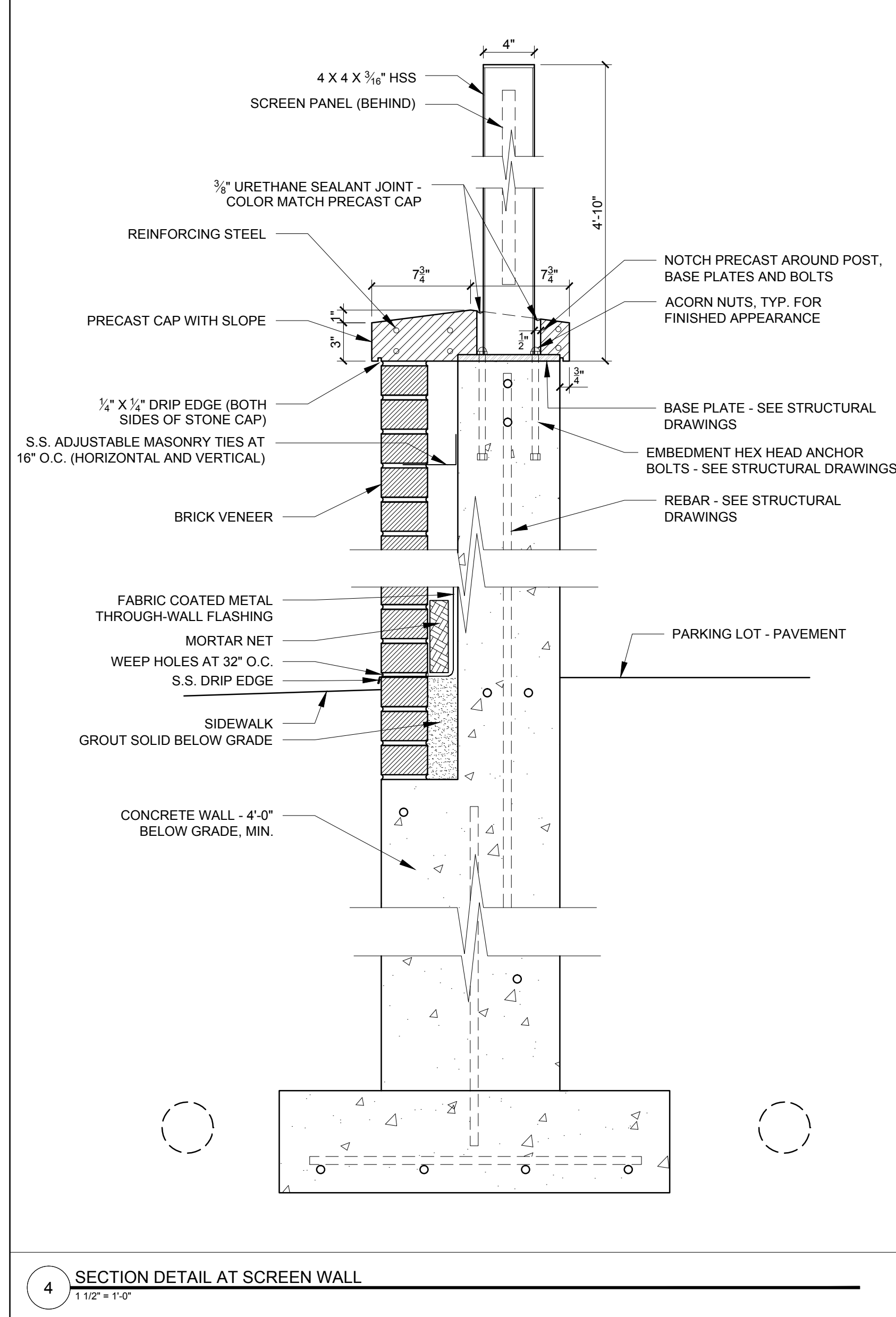
5 HALLWAY FRAMING AT CMU SHAFT DETAIL
1 1/2" = 1'-0"



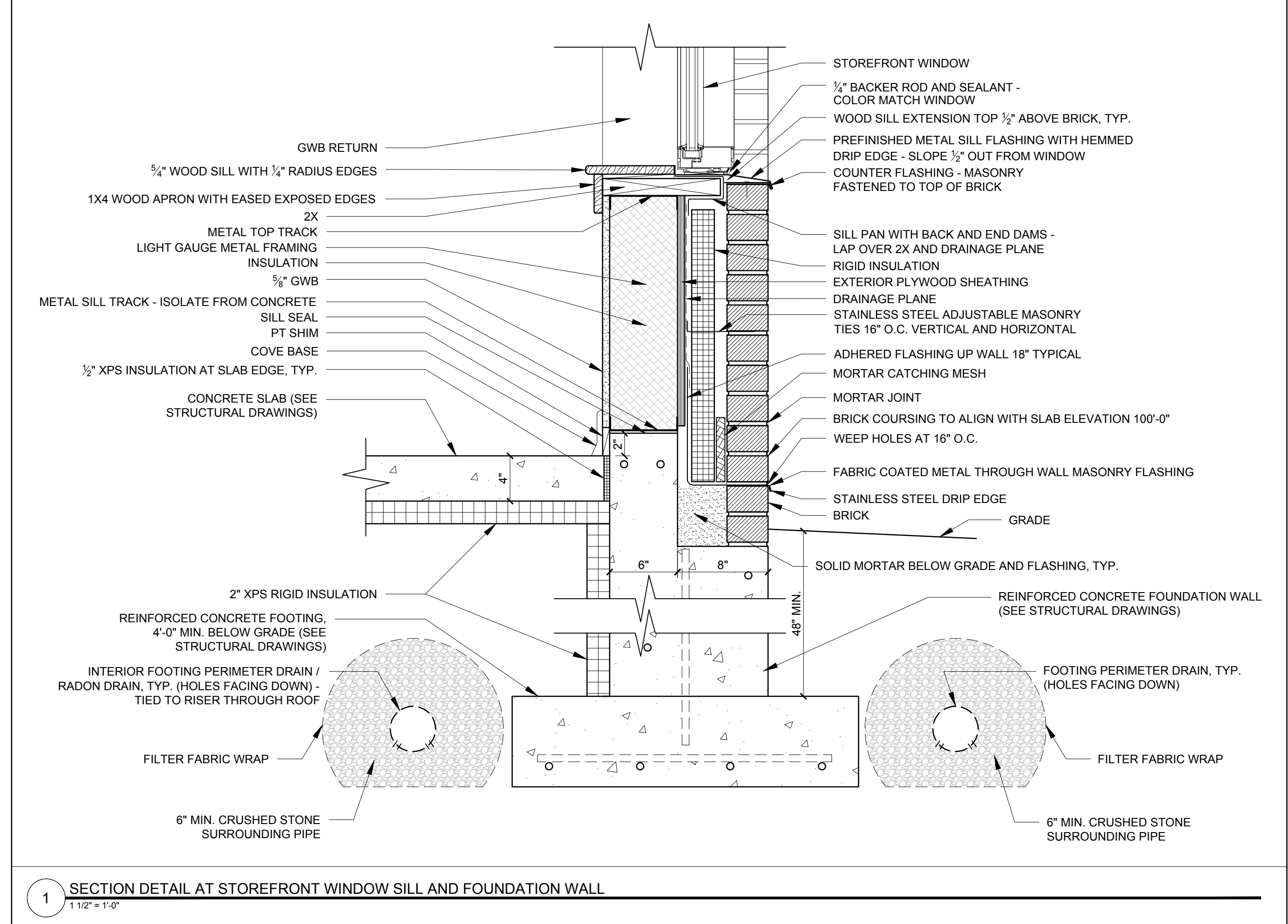
6 HALLWAY AND TRUSS AT CMU SHAFT DETAIL AT ROOF
1 1/2" = 1'-0"



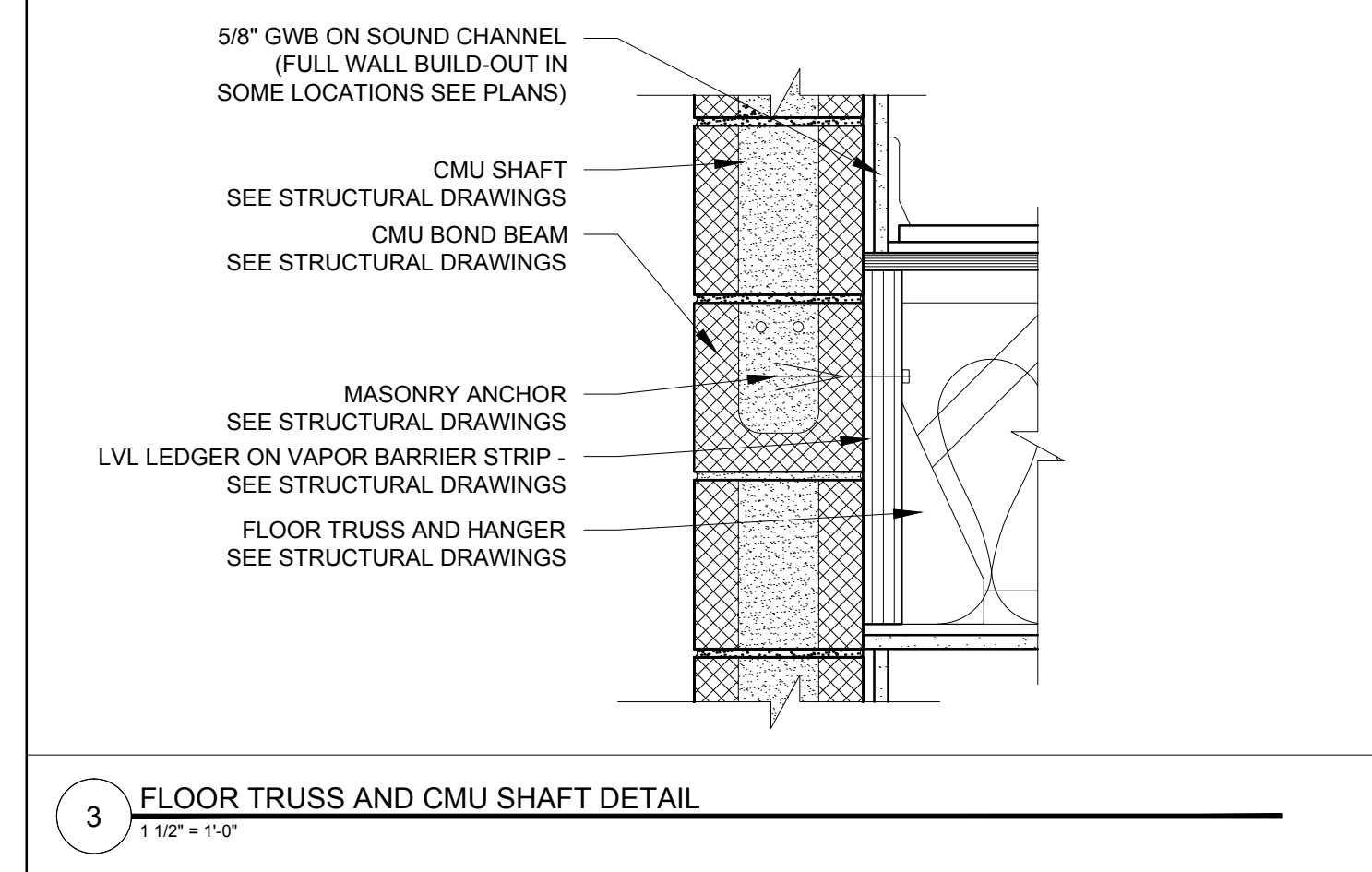
8 DETAIL AT STAIR ROOF
1 1/2" = 1'-0"



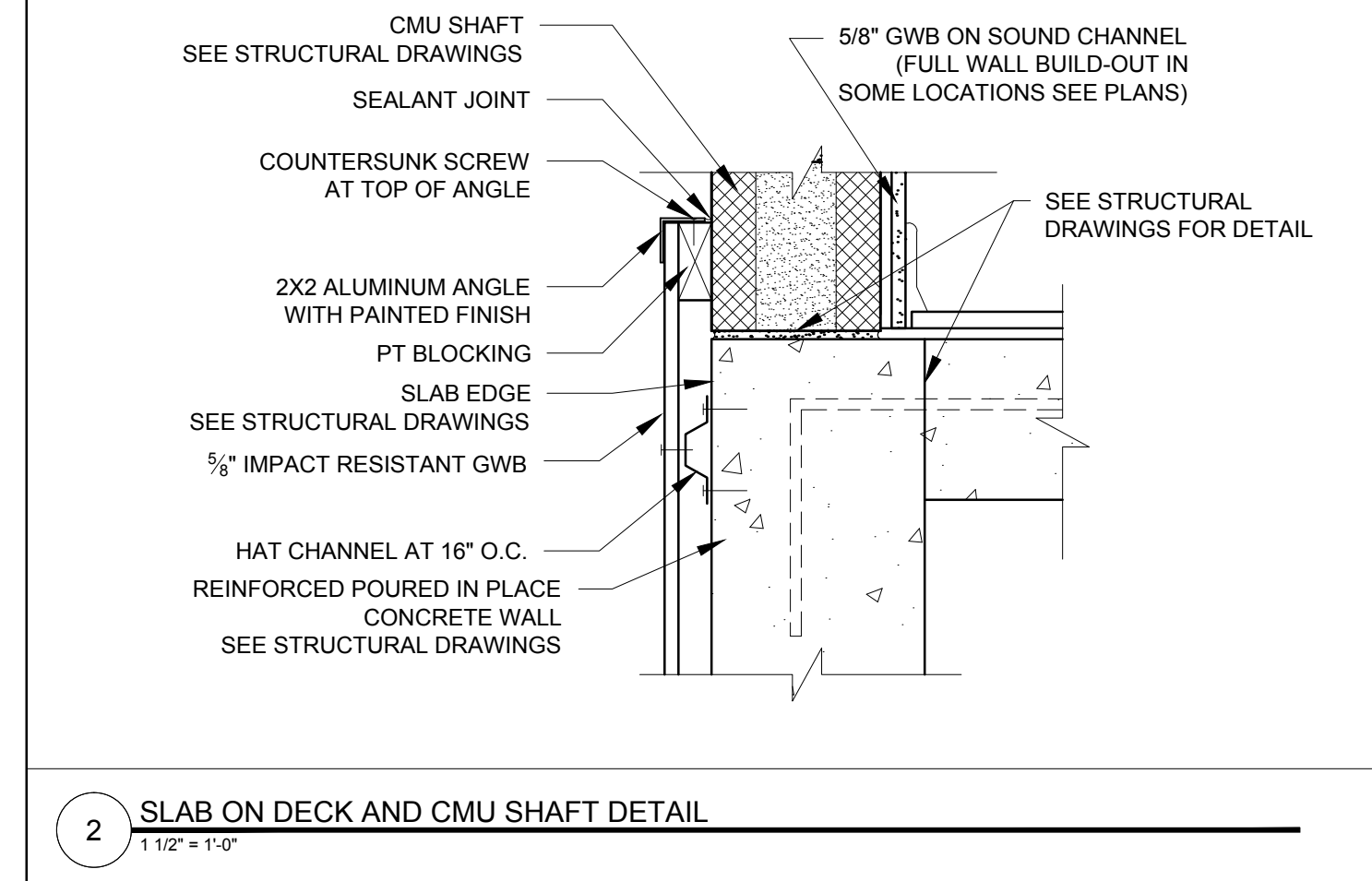
4 SECTION DETAIL AT SCREEN WALL
1 1/2" = 1'-0"



1 SECTION DETAIL AT STOREFRONT WINDOW SILL AND FOUNDATION WALL
1 1/2" = 1'-0"



3 FLOOR TRUSS AND CMU SHAFT DETAIL
1 1/2" = 1'-0"



2 SLAB ON DECK AND CMU SHAFT DETAIL
1 1/2" = 1'-0"