

© 2015 RYAN SENATORE ARCHITECTURE

APARTMENTS
89 ANDERSON STREET
PORTLAND, MAINE



RYAN SENATORE
ARCHITECTURE
565 CONGRESS STREET
PORTLAND, MAINE 04101
207-650-6414
senatorearchitecture.com

CONSULTANTS:

STRUCTURAL:
Structural Integrity
77 Oak Street
Portland, ME 04101
207-774-4614

REVISIONS:

DATE: JULY 3, 2015

PROJECT No. 1415

DRAWN BY: RRT / RJS

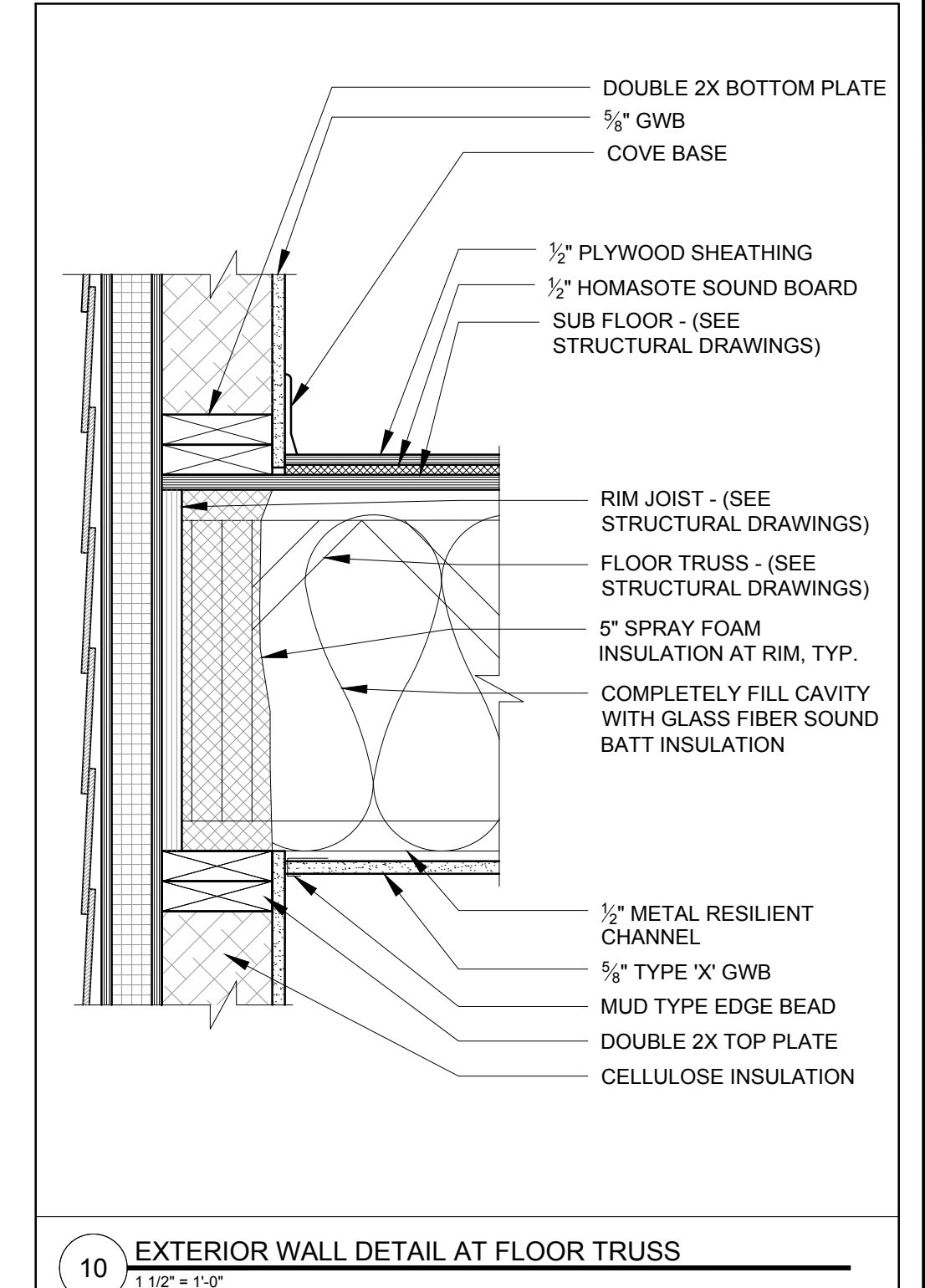
CHECKED BY: RJS

SCALE: AS NOTED

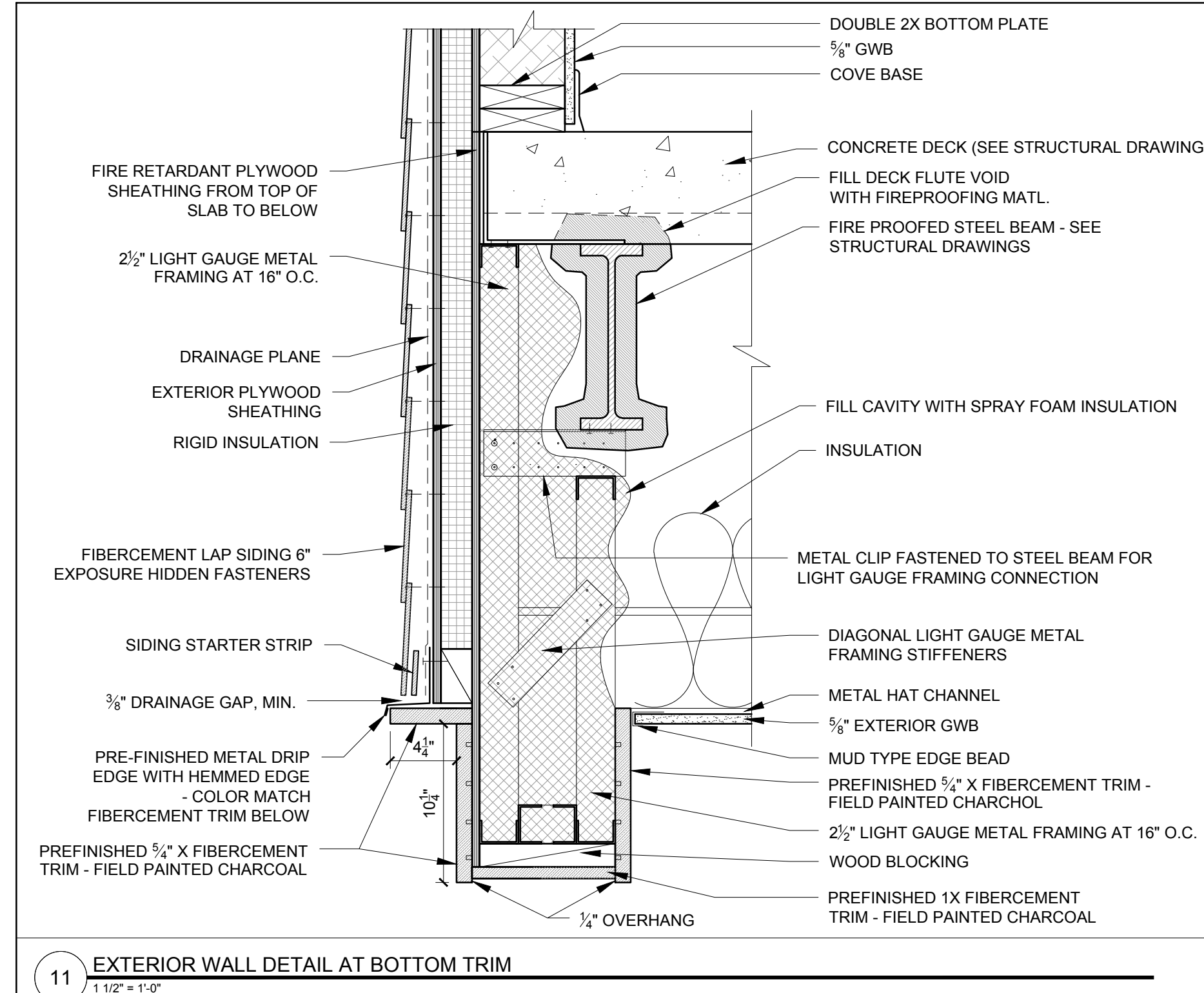
SHEET TITLE:

DETAILS

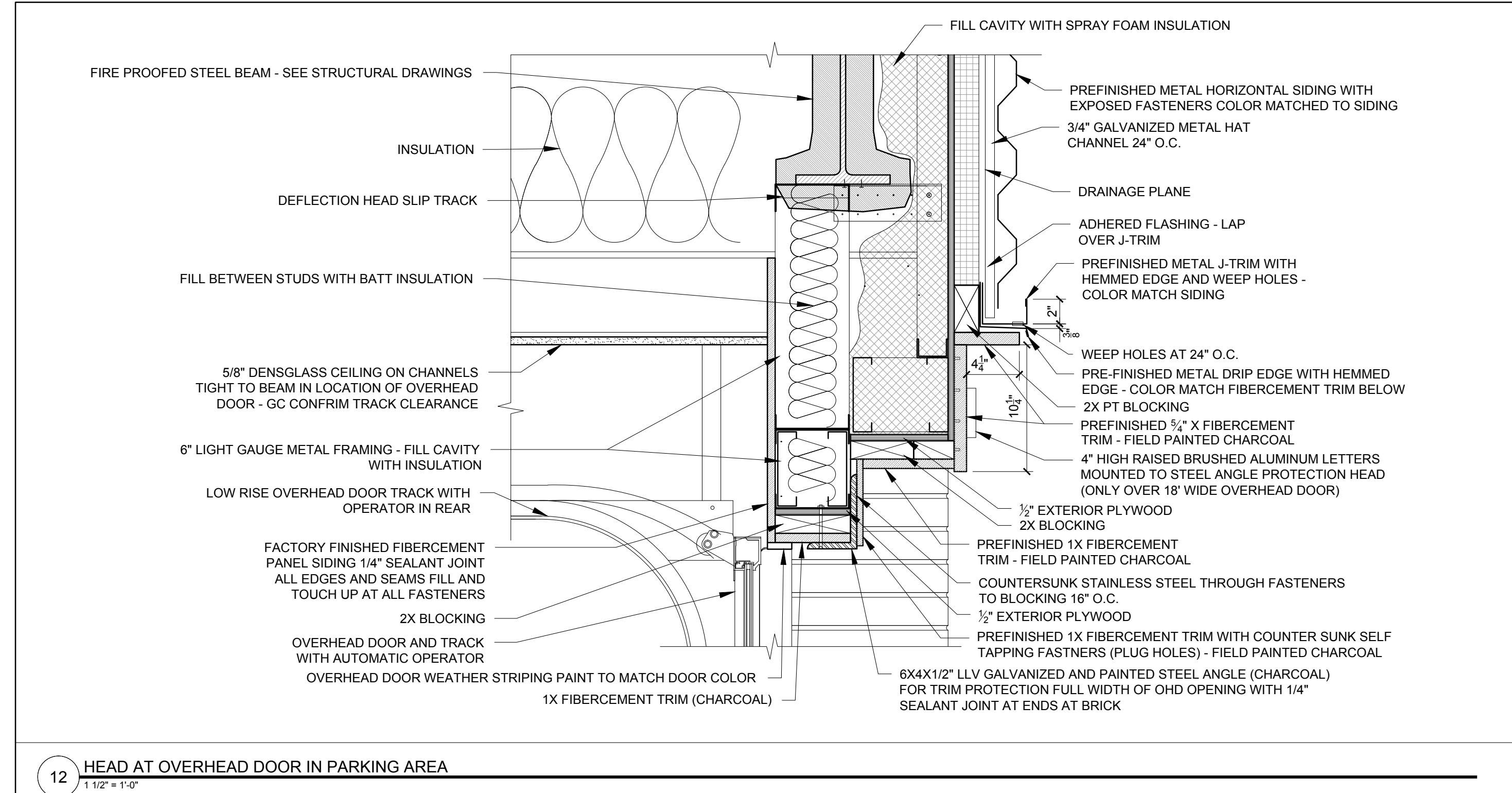
A5-6



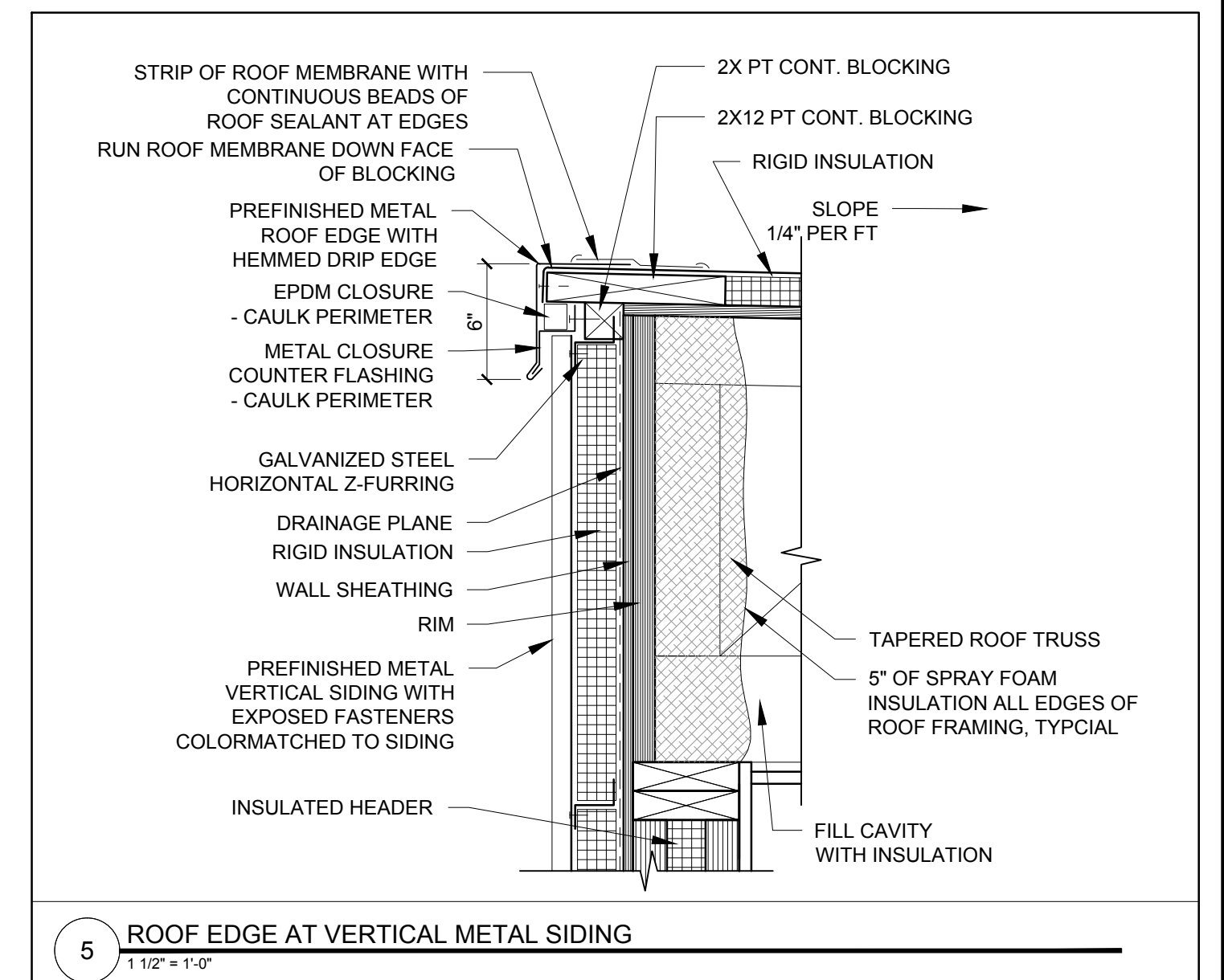
10 EXTERIOR WALL DETAIL AT FLOOR TRUSS
1 1/2" = 1'-0"



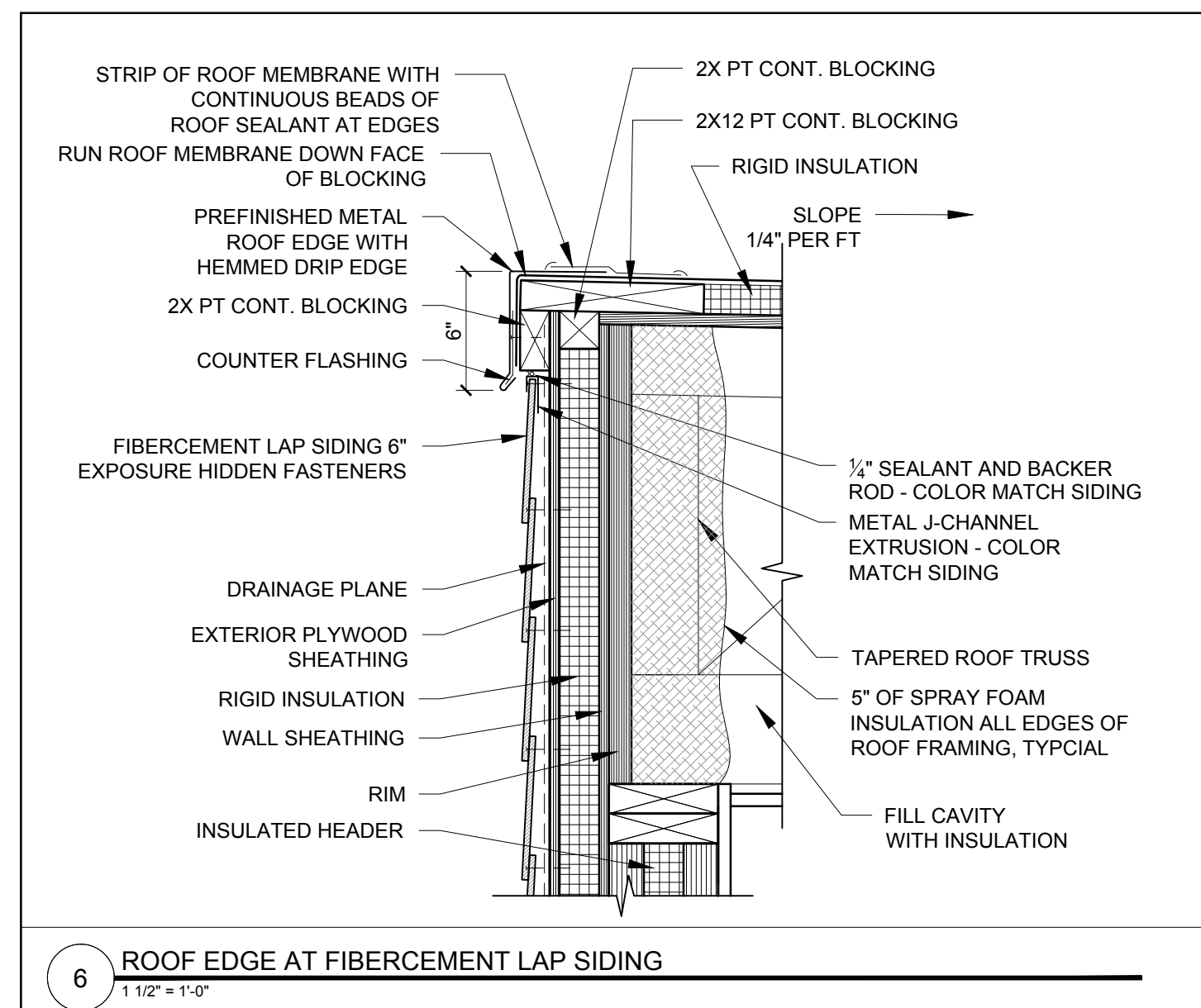
11 EXTERIOR WALL DETAIL AT BOTTOM TRIM
1 1/2" = 1'-0"



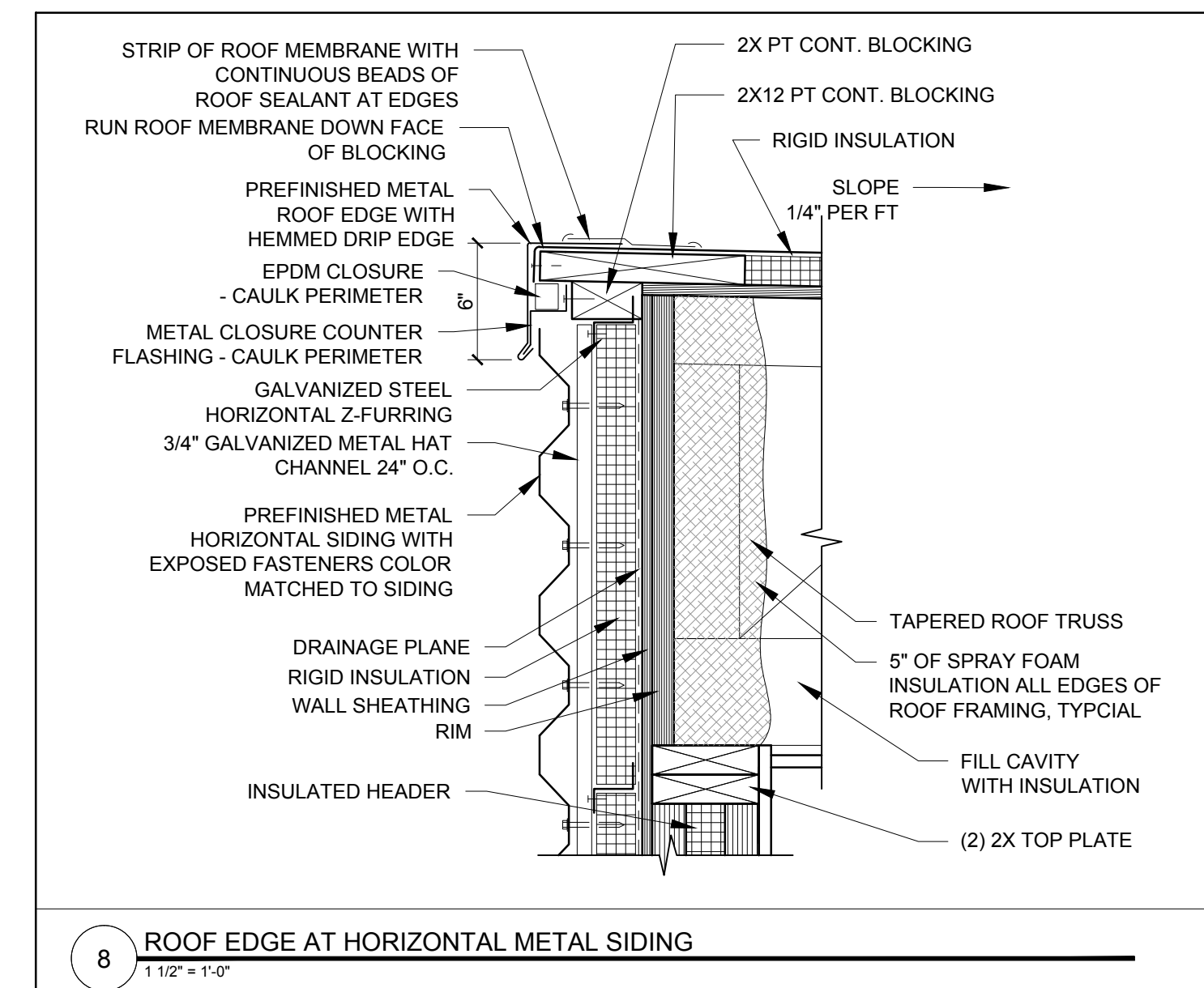
12 HEAD AT OVERHEAD DOOR IN PARKING AREA
1 1/2" = 1'-0"



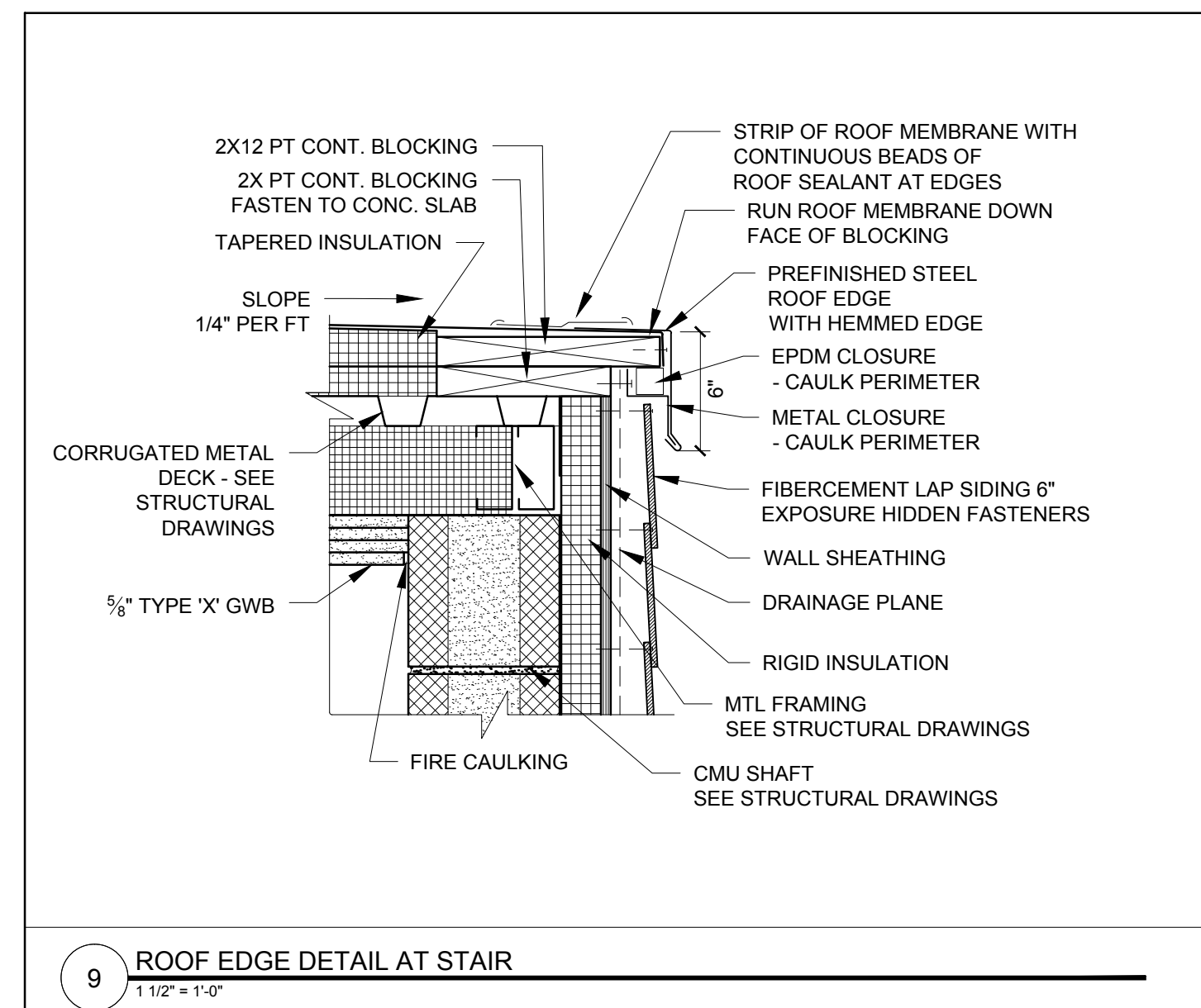
5 ROOF EDGE AT VERTICAL METAL SIDING
1 1/2" = 1'-0"



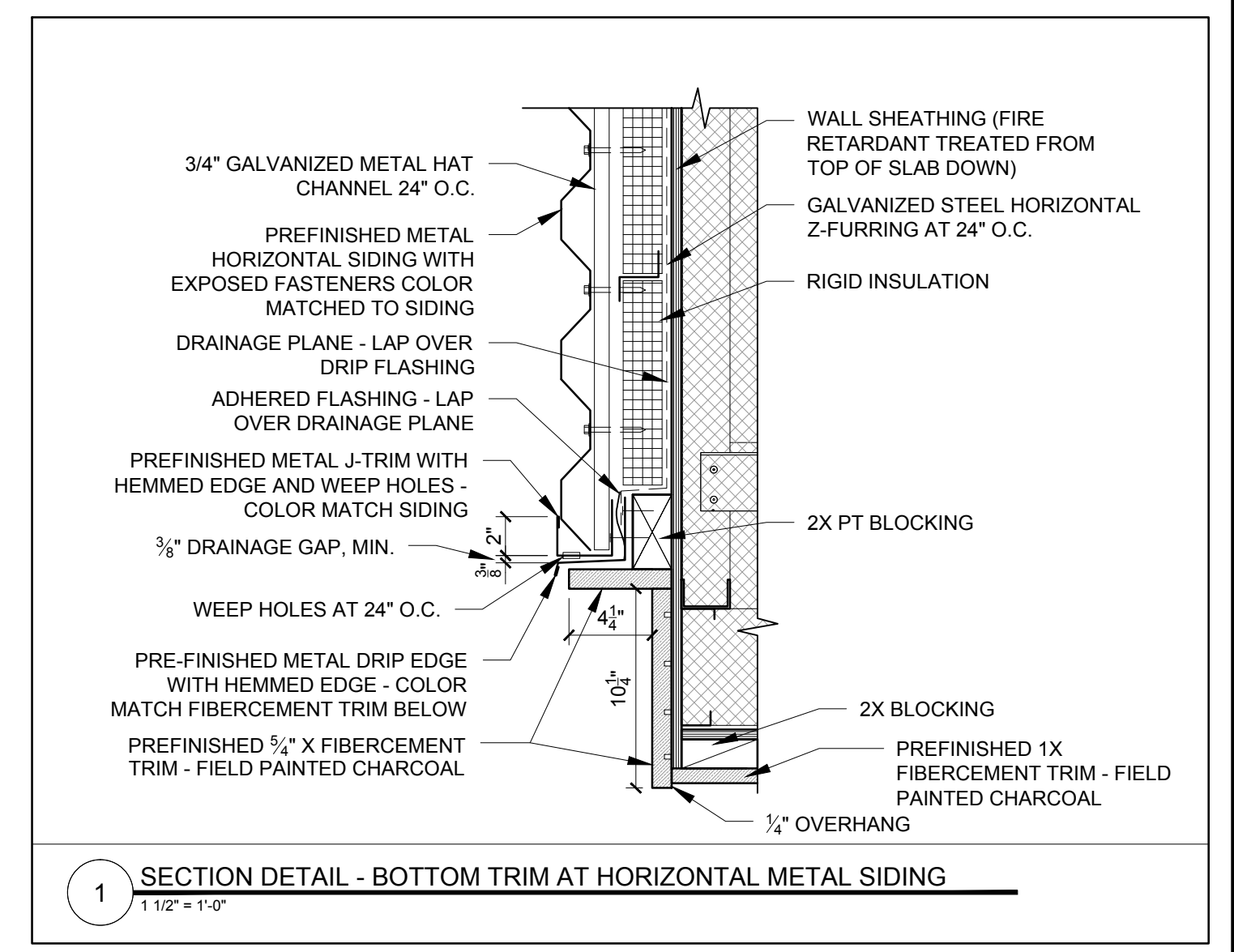
6 ROOF EDGE AT FIBER CEMENT LAP SIDING
1 1/2" = 1'-0"



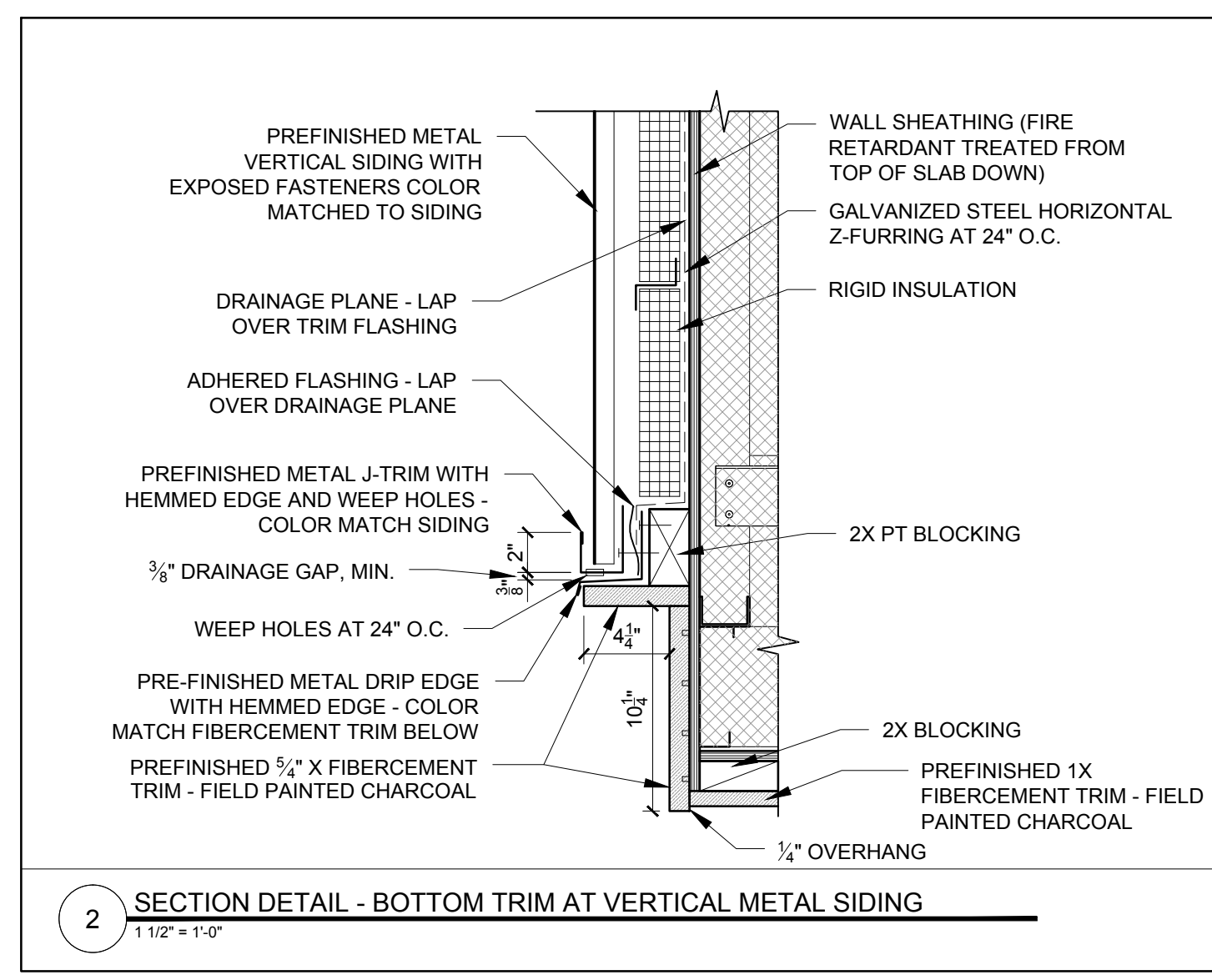
8 ROOF EDGE AT HORIZONTAL METAL SIDING
1 1/2" = 1'-0"



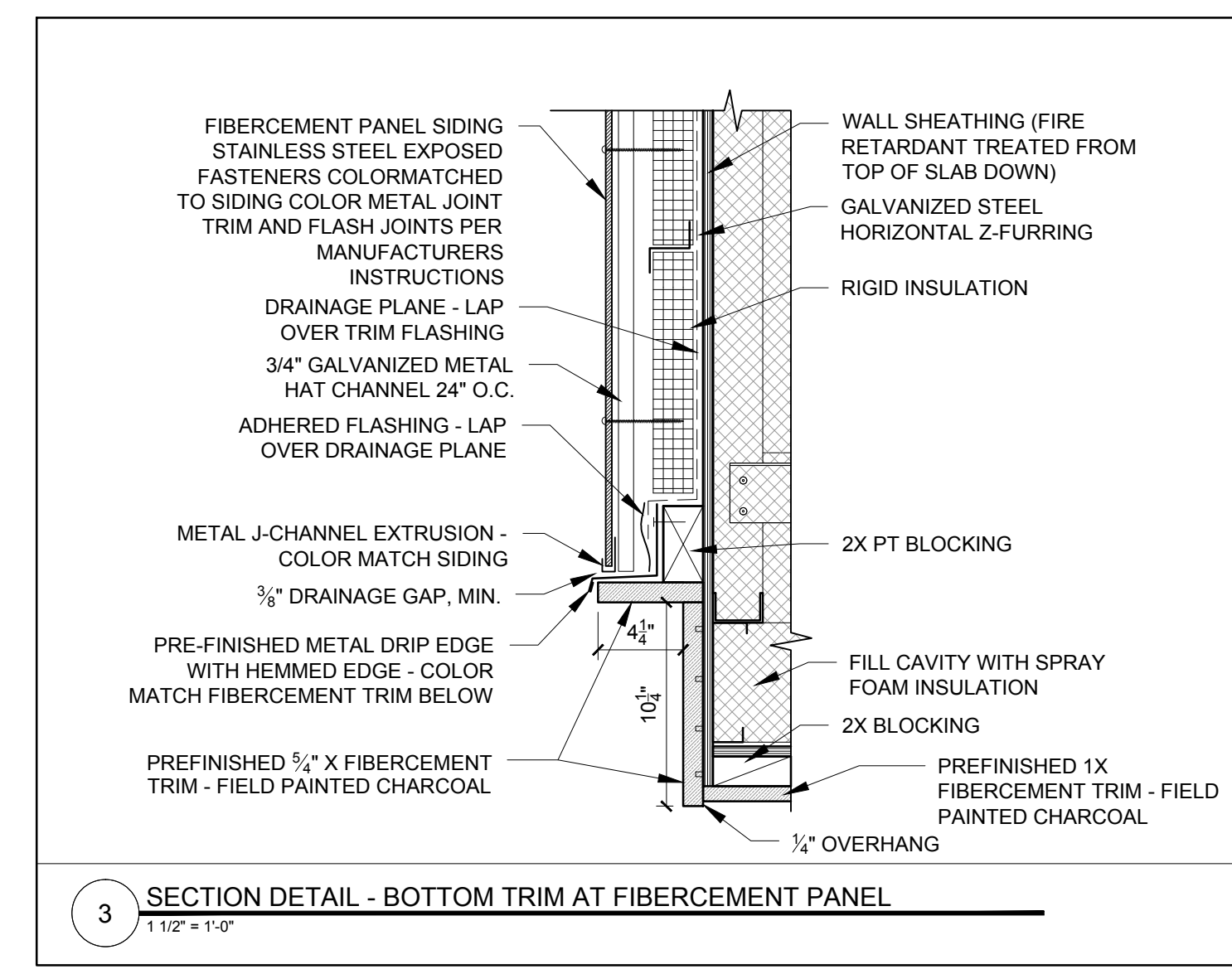
9 ROOF EDGE DETAIL AT STAIR
1 1/2" = 1'-0"



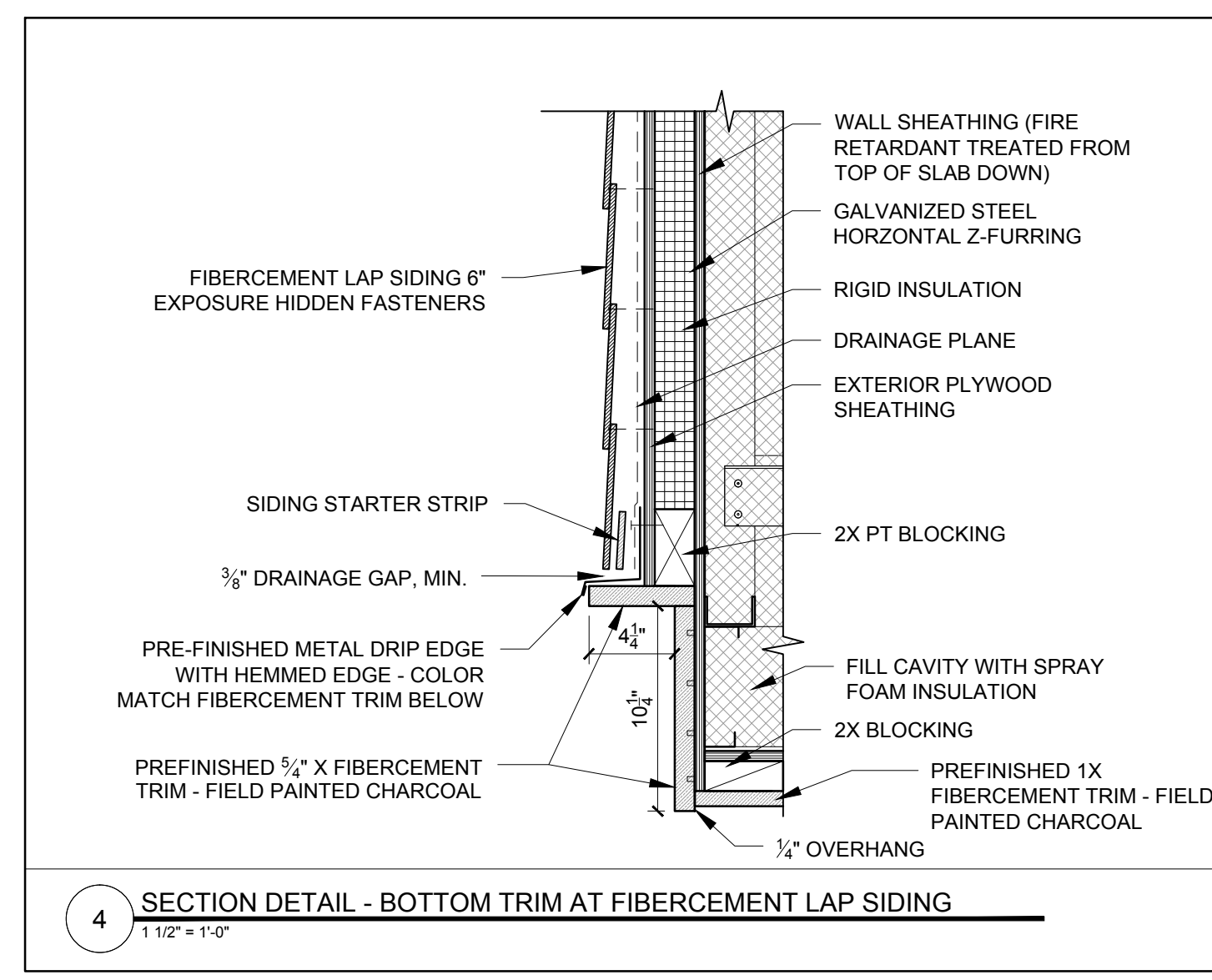
1 SECTION DETAIL - BOTTOM TRIM AT HORIZONTAL METAL SIDING
1 1/2" = 1'-0"



2 SECTION DETAIL - BOTTOM TRIM AT VERTICAL METAL SIDING
1 1/2" = 1'-0"



3 SECTION DETAIL - BOTTOM TRIM AT FIBER CEMENT PANEL
1 1/2" = 1'-0"



4 SECTION DETAIL - BOTTOM TRIM AT FIBER CEMENT LAP SIDING
1 1/2" = 1'-0"