

© 2015 RYAN SENATORE ARCHITECTURE

APARTMENTS
89 ANDERSON STREET
PORTLAND, MAINE



RYAN SENATORE ARCHITECTURE
565 CONGRESS STREET
SUITE 304
PORTLAND, MAINE 04101
207-650-6414
senatorearchitecture.com

CONSULTANTS:
STRUCTURAL:
Structural Integrity
77 Oak Street
Portland, ME 04101
207-774-4614

REVISIONS:

DATE: JULY 3, 2015

PROJECT No. 1415

DRAWN BY: RRT / RJS

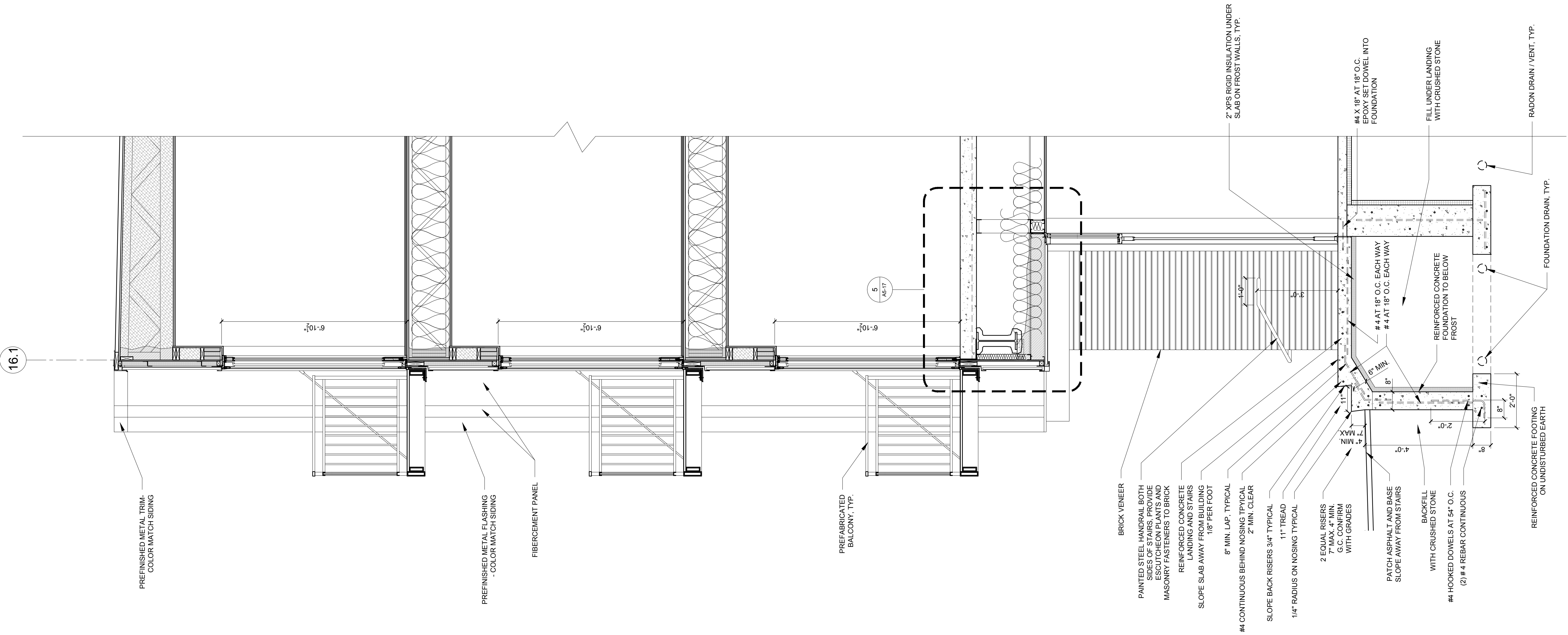
CHECKED BY: RJS

SCALE: AS NOTED

SHEET TITLE:
WALL SECTIONS

A5-4B

1 WALL SECTION
1/2" = 1'-0"



PREFINISHED METAL TRIM -
COLOR MATCH SIDING

PREFINISHED METAL FLASHING -
COLOR MATCH SIDING

FIBERCEMENT PANEL

PREFABRICATED
BALCONY, TYP.

BRICK VENEER

PAINTED STEEL HANDRAIL BOTH
SLOPE AND STAIRS
WITH ESCUTCHEON PLANTS AND
MASONRY FASTENERS TO BRICK

REINFORCED CONCRETE
LANDING AND STAIRS
SLOPE SLAB AWAY FROM BUILDING
1/8" PER FOOT

8" MIN. LAP, TYPICAL
2" MIN. CLEAR

#4 CONTINUOUS BEHIND NOSING, TYPICAL
SLOPE BACK RISERS 3/4" TYPICAL

11" TREAD
1/4" RADIUS ON NOSING TYPICAL

2 EQUAL RISERS
7" MAX. 4" MIN.
G.C. CONFIRM
WITH GRADES

PATCH ASPHALT AND BASE
SLOPE AWAY FROM STAIRS

BACKFILL
WITH CRUSHED STONE

#4 HOOKED DOWELS AT 64" O.C.
(2) #4 REBAR CONTINUOUS

REINFORCED CONCRETE FOOTING
ON UNDISTURBED EARTH

FOUNDATION DRAIN, TYP.

RADON DRAIN / VENT, TYP.

2" XPS RIGID INSULATION UNDER
SLAB ON FROST WALLS, TYP.

#4 X 18" AT 18" O.C.
EPOXY SET DOWEL INTO
FOUNDATION

FILL UNDER LANDING
WITH CRUSHED STONE

#4 AT 18" O.C. EACH WAY
#4 AT 18" O.C. EACH WAY

REINFORCED CONCRETE
FOUNDATION TO BELOW
FROST