



© 2015 RYAN SENATORE ARCHITECTURE

APARTMENTS
89 ANDERSON STREET
PORTLAND, MAINE



RYAN SENATORE
ARCHITECTURE
565 CONGRESS STREET
SUITE 304
PORTLAND, MAINE 04101
207-650-6414
senatorearchitecture.com

CONSULTANTS:
STRUCTURAL:
Structural Integrity
77 Oak Street
Portland, ME 04101
207-774-4614

REVISIONS:

DATE: JULY 3, 2015

PROJECT No. 1415

DRAWN BY: RRT / RJS

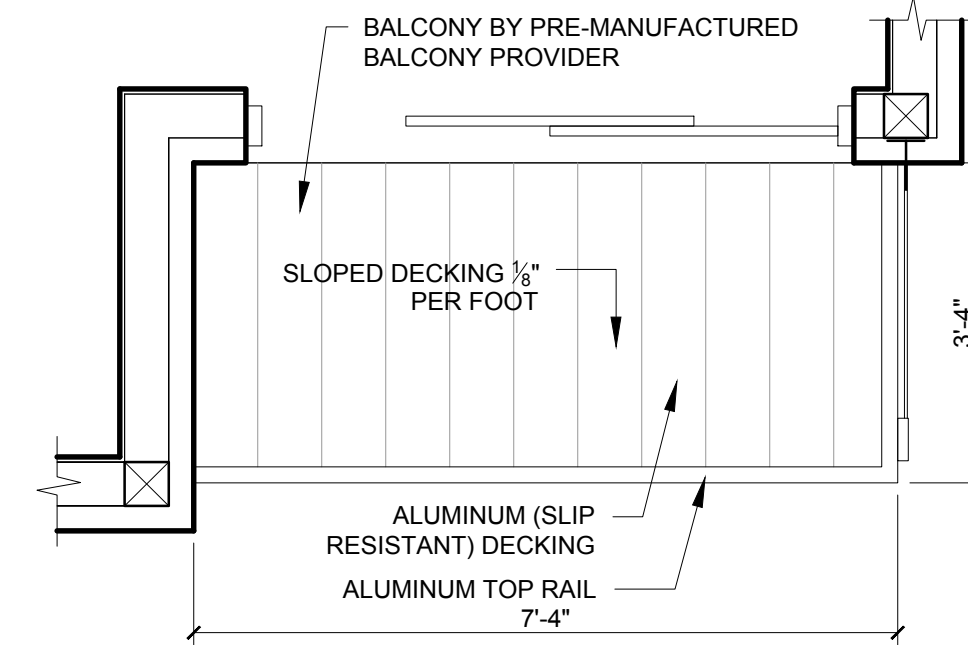
CHECKED BY: RJS

SCALE: AS NOTED

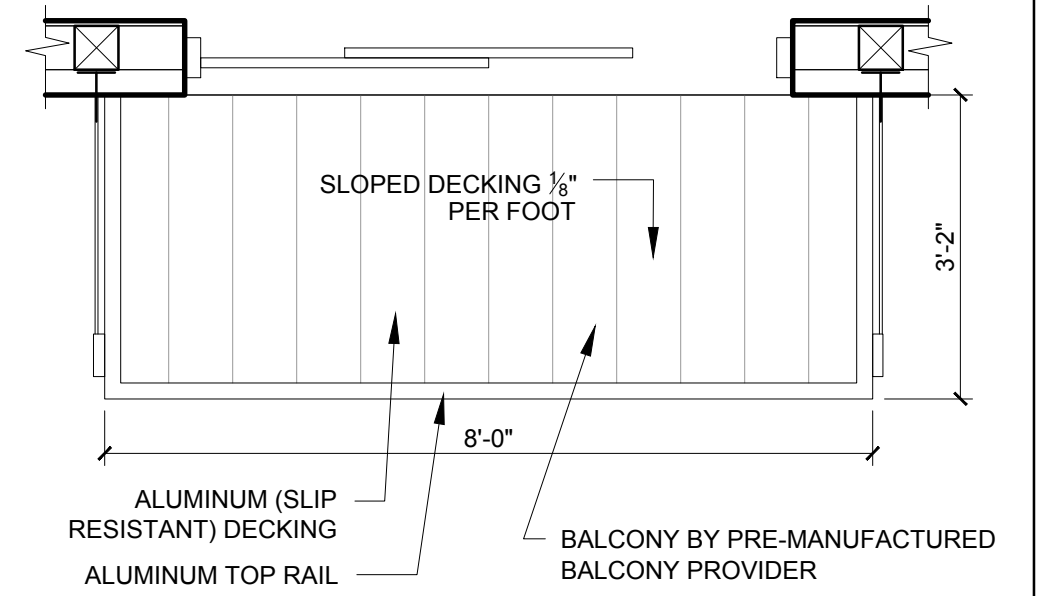
SHEET TITLE:
TYPICAL
BALCONY TYPES

A5-23

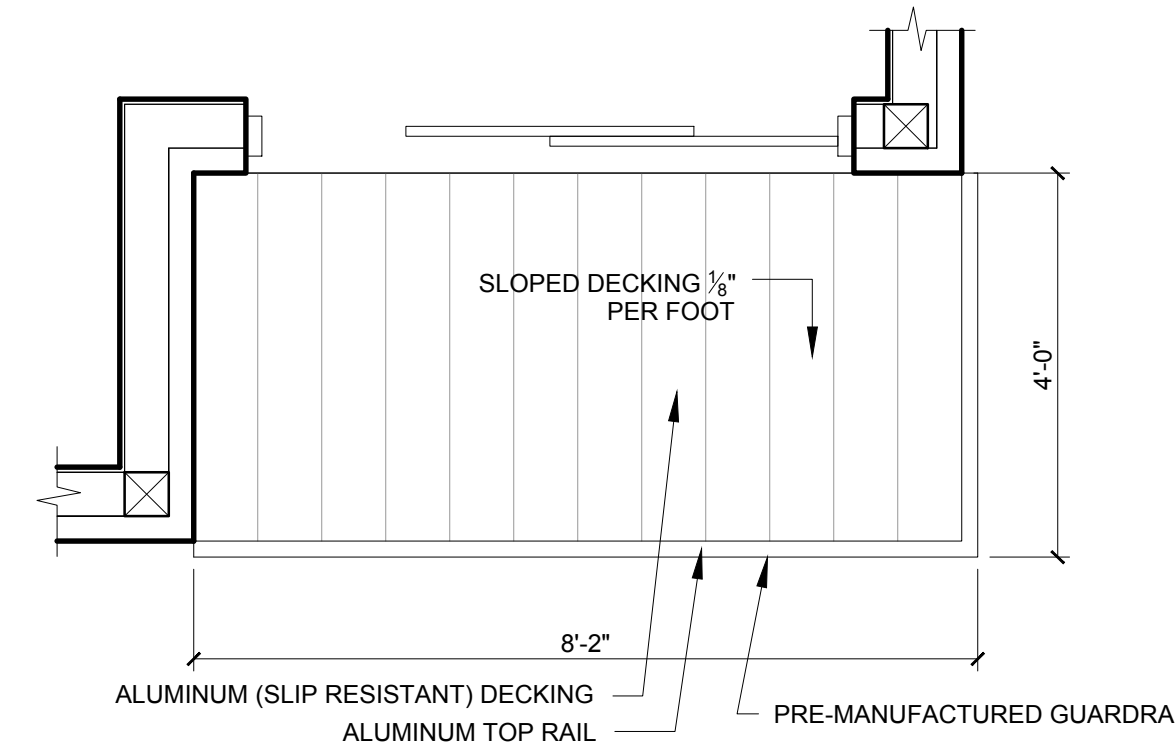
G.C. TO CONFIRM BALCONY SIZES
ON SITE PRIOR TO ORDERING



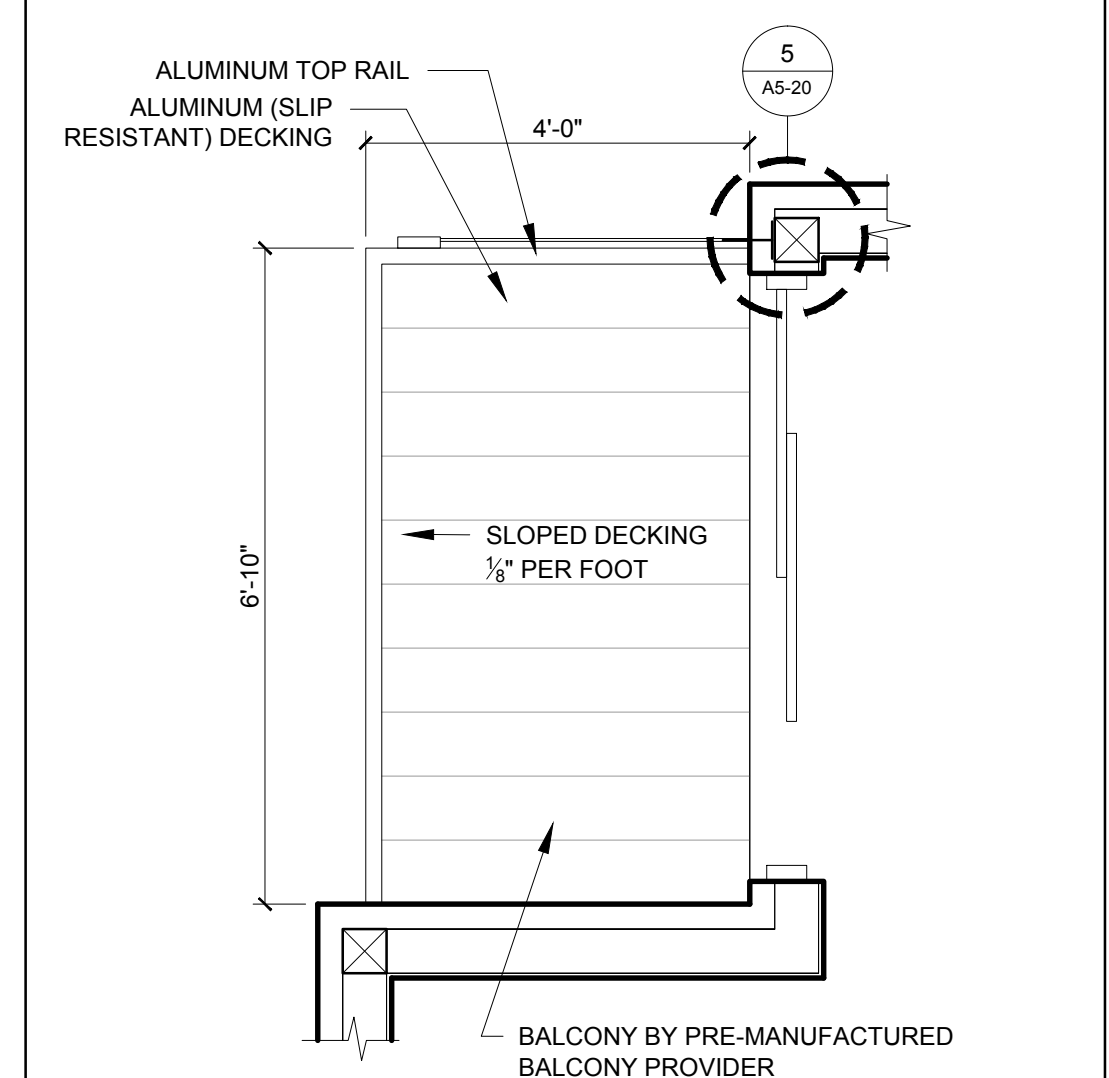
8 TYPE 8 BALCONY
1/2" = 1'-0"



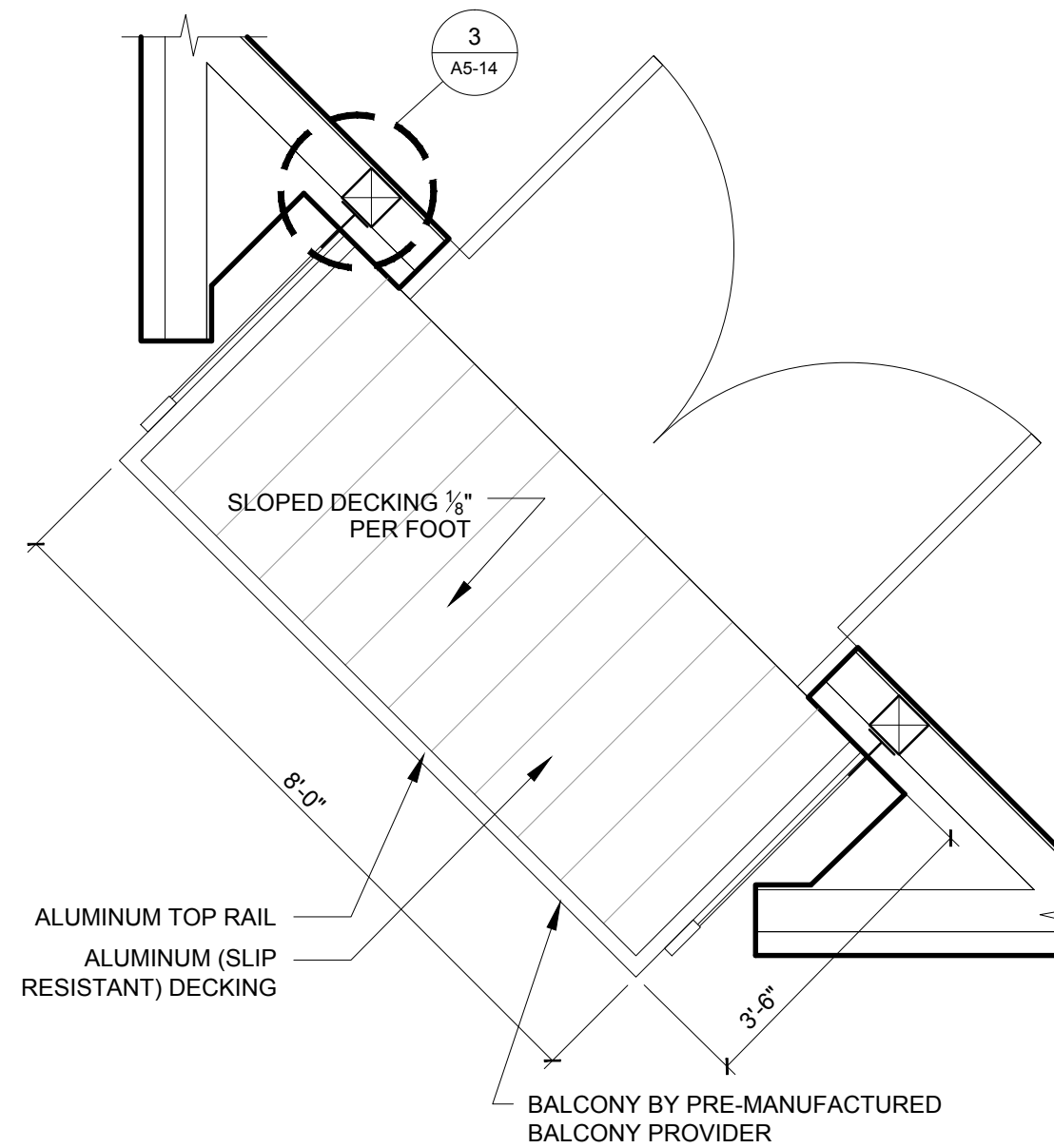
4 TYPE 4 BALCONY
1/2" = 1'-0"



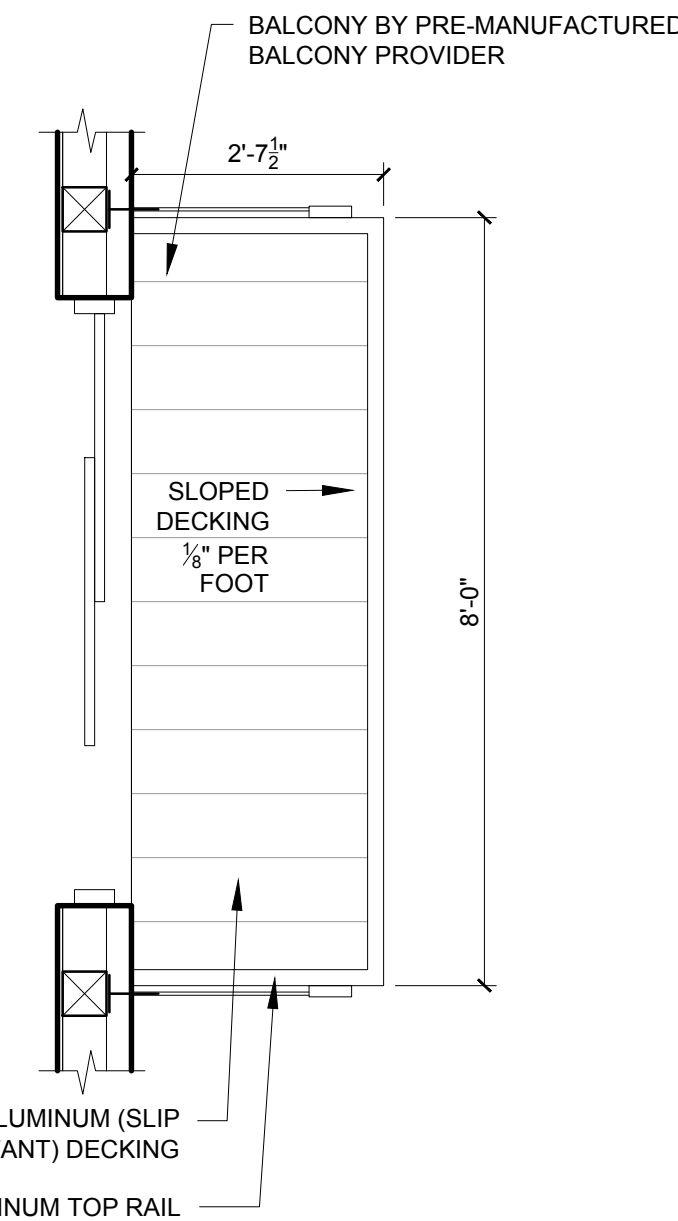
5 TYPE 5 BALCONY
1/2" = 1'-0"



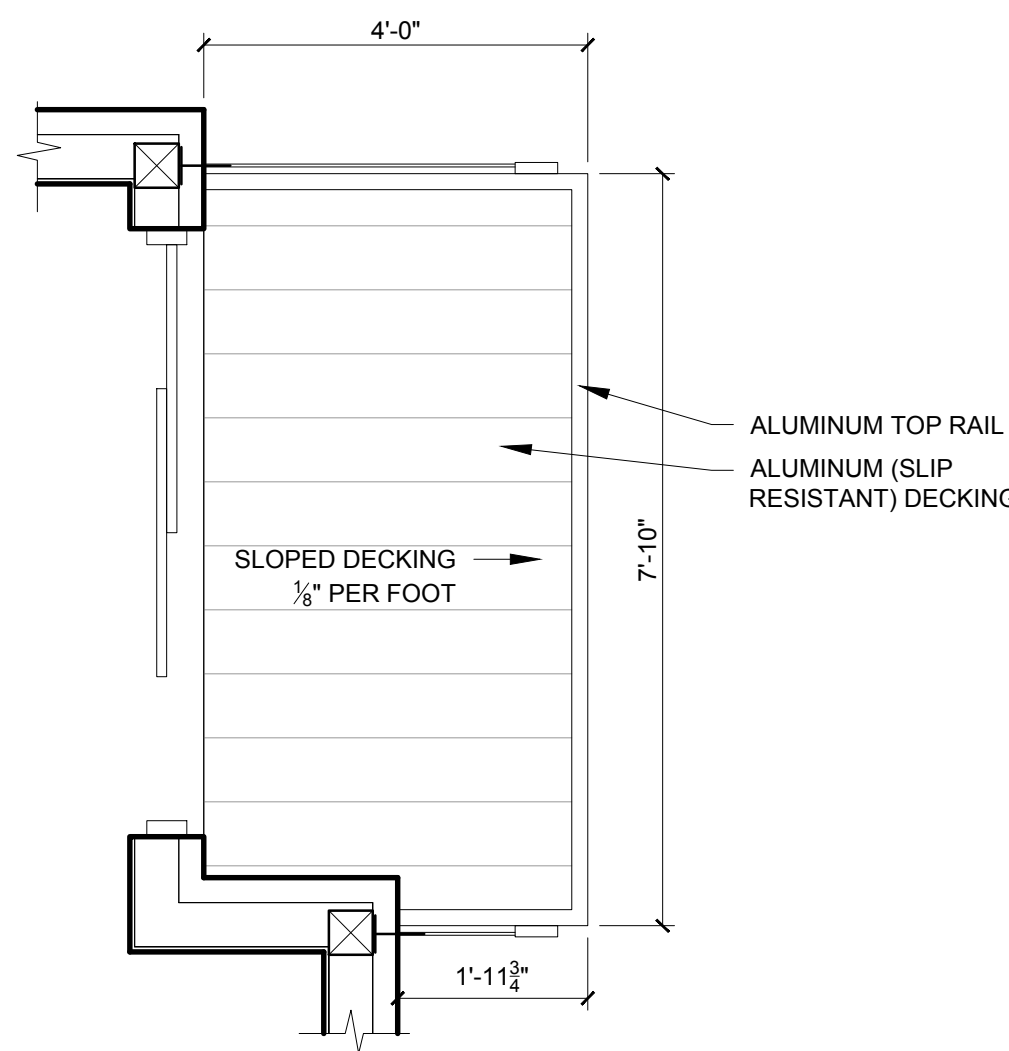
2 TYPE 2 BALCONY
1/2" = 1'-0"



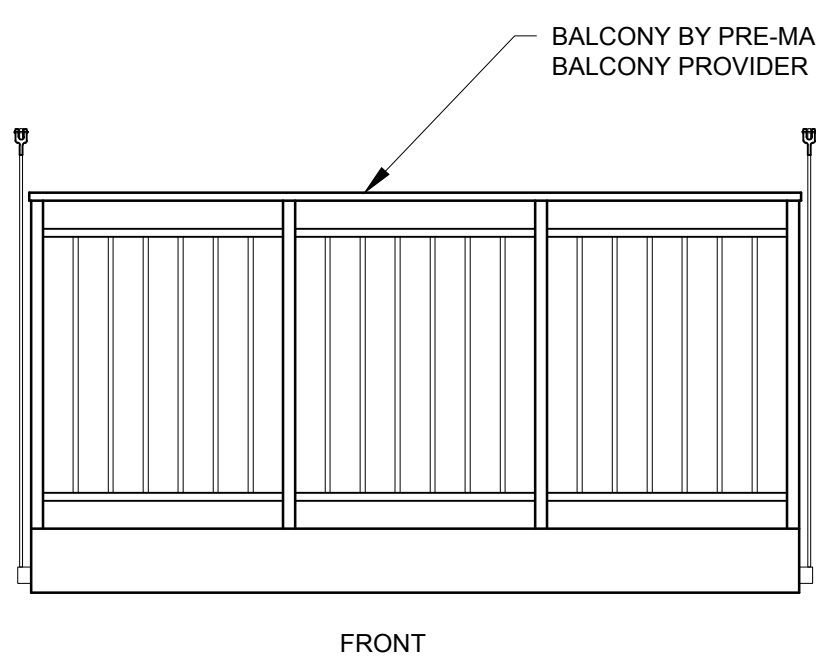
3 TYPE 3 BALCONY
1/2" = 1'-0"



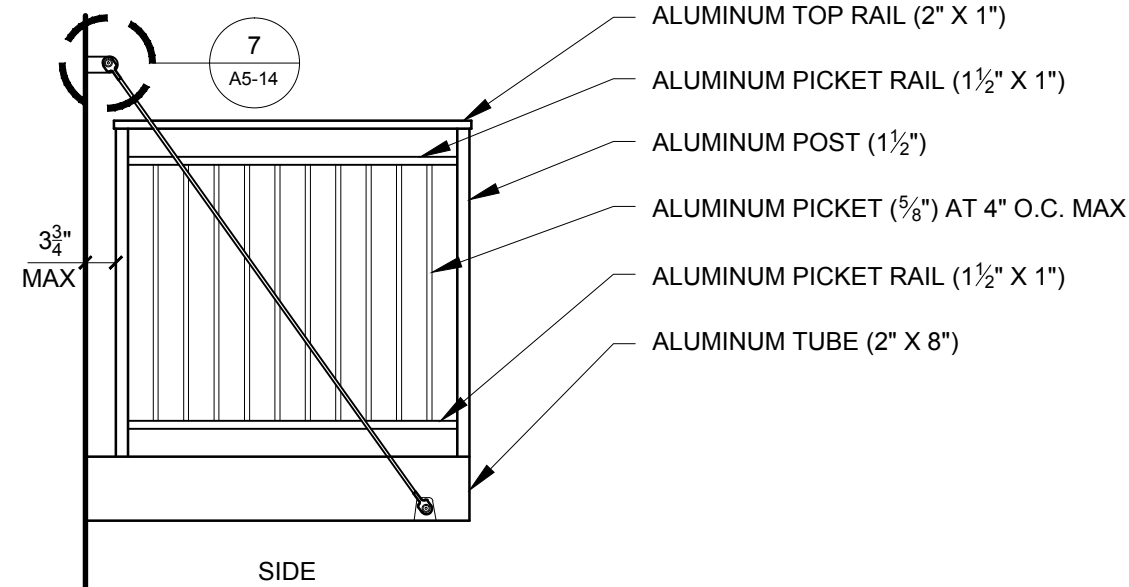
6 TYPE 6 BALCONY
1/2" = 1'-0"



7 TYPE 7 BALCONY
1/2" = 1'-0"



FRONT



SIDE

9 BALCONY ELEVATIONS
1/2" = 1'-0"

- ALUMINUM TOP RAIL (2" X 1")
- ALUMINUM PICKET RAIL (1 1/2" X 1")
- ALUMINUM POST (1 1/2")
- ALUMINUM PICKET (5/8") AT 4" O.C. MAX
- ALUMINUM PICKET RAIL (1 1/2" X 1")
- ALUMINUM TUBE (2" X 8")