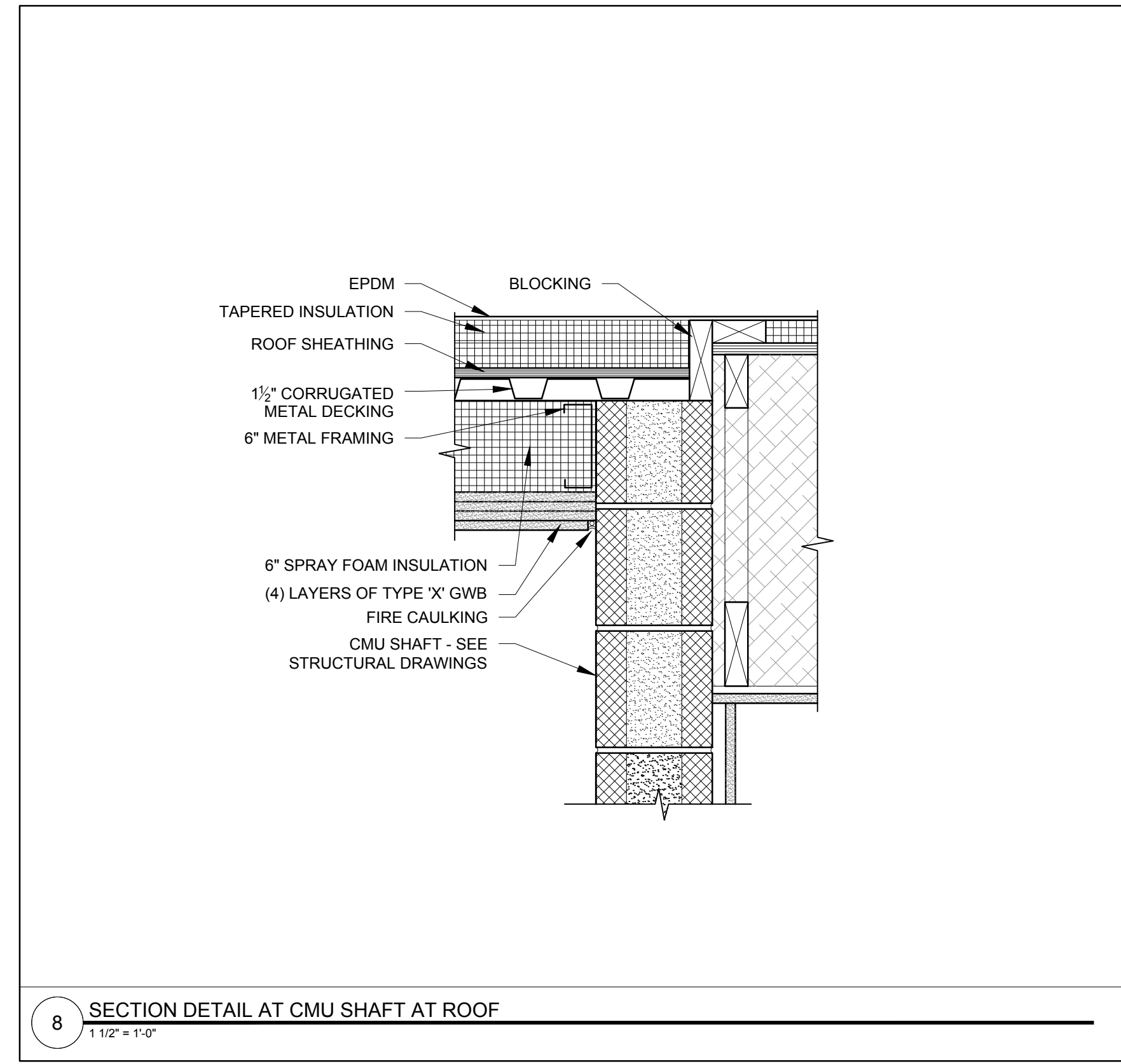
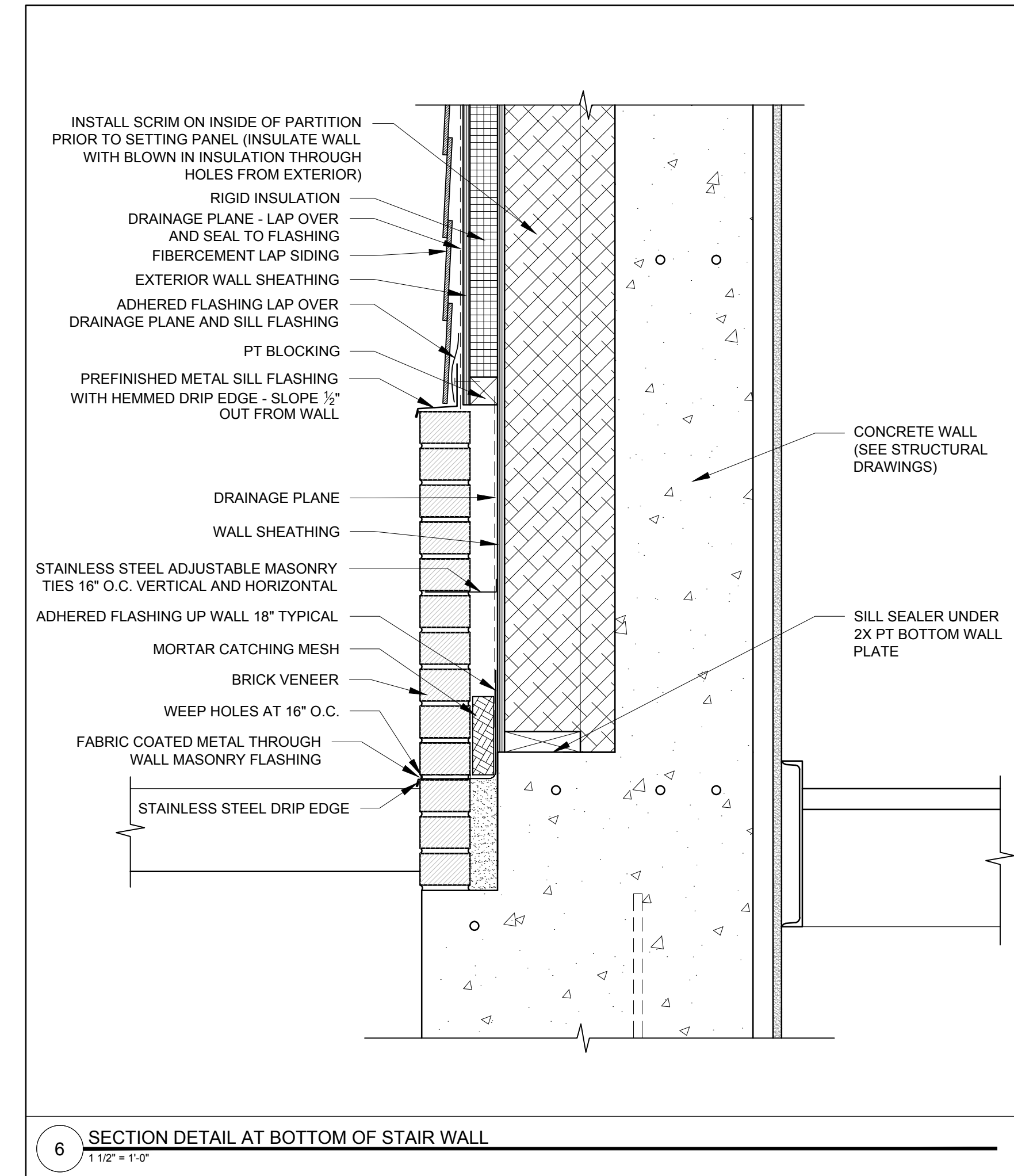


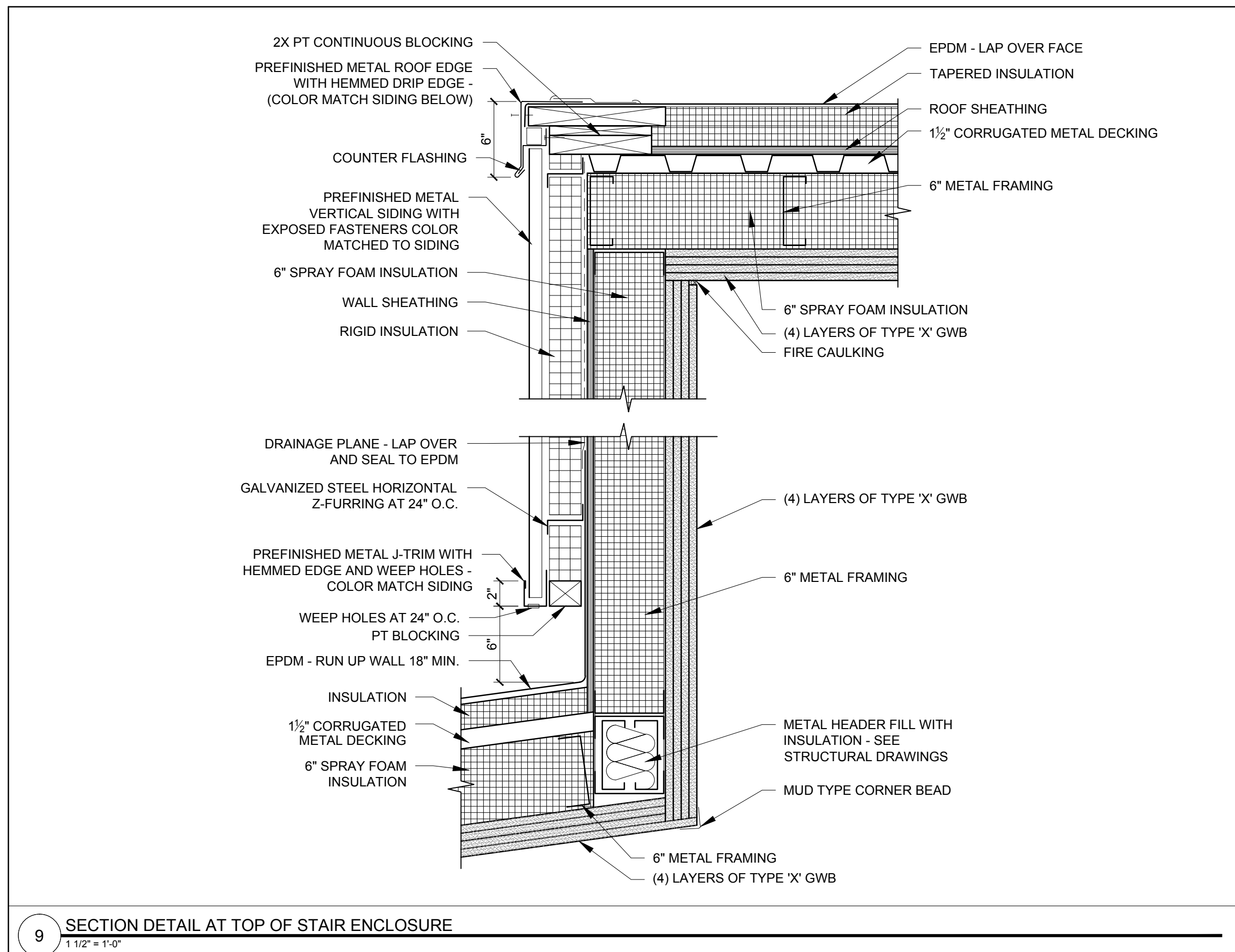
10 DRYWALL EXTENSION AT EXTERIOR WALLS  
1/12" = 1'-0"



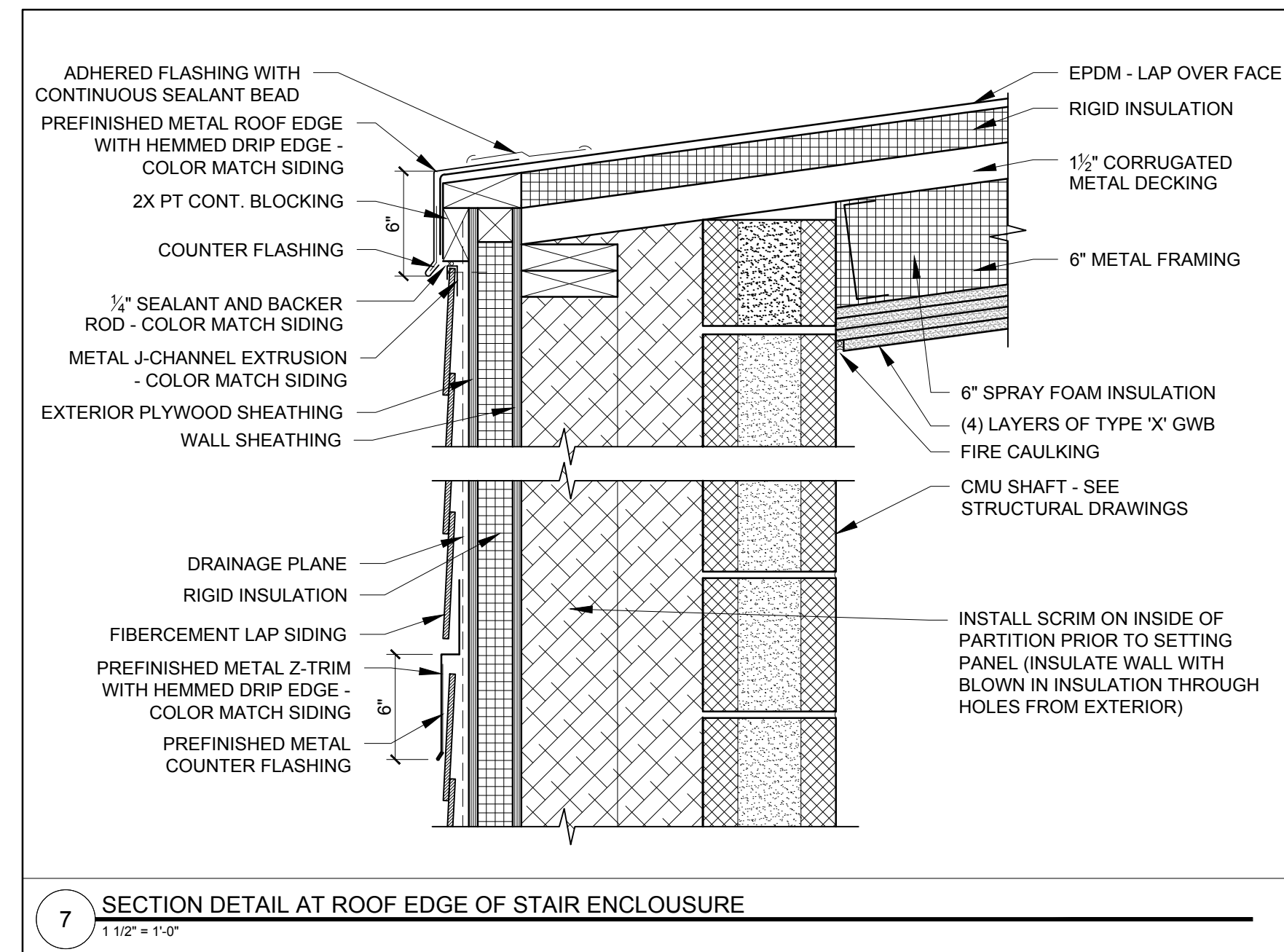
8 SECTION DETAIL AT CMU SHAFT AT ROOF  
1/12" = 1'-0"



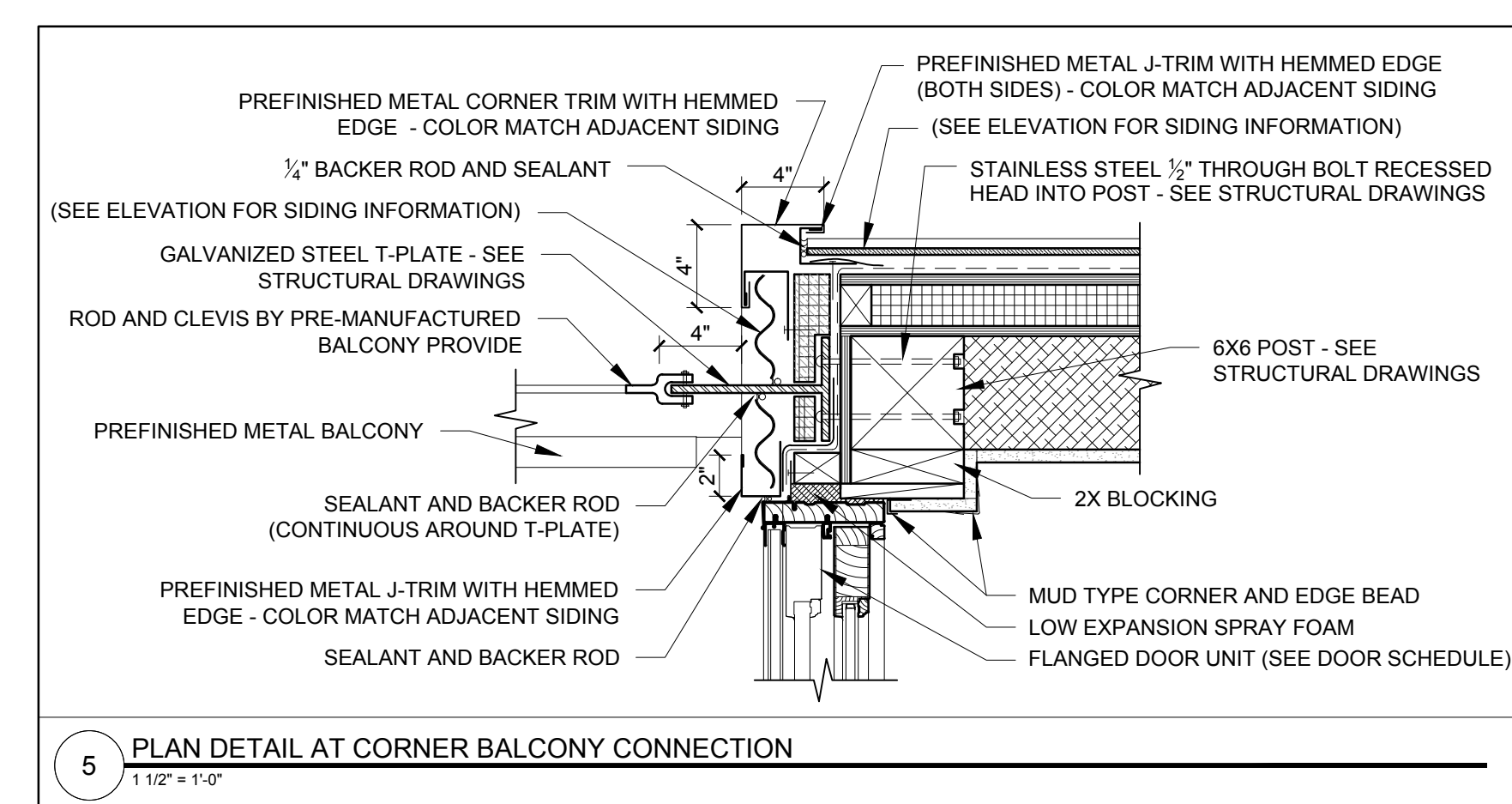
6 SECTION DETAIL AT BOTTOM OF STAIR WALL  
1/12" = 1'-0"



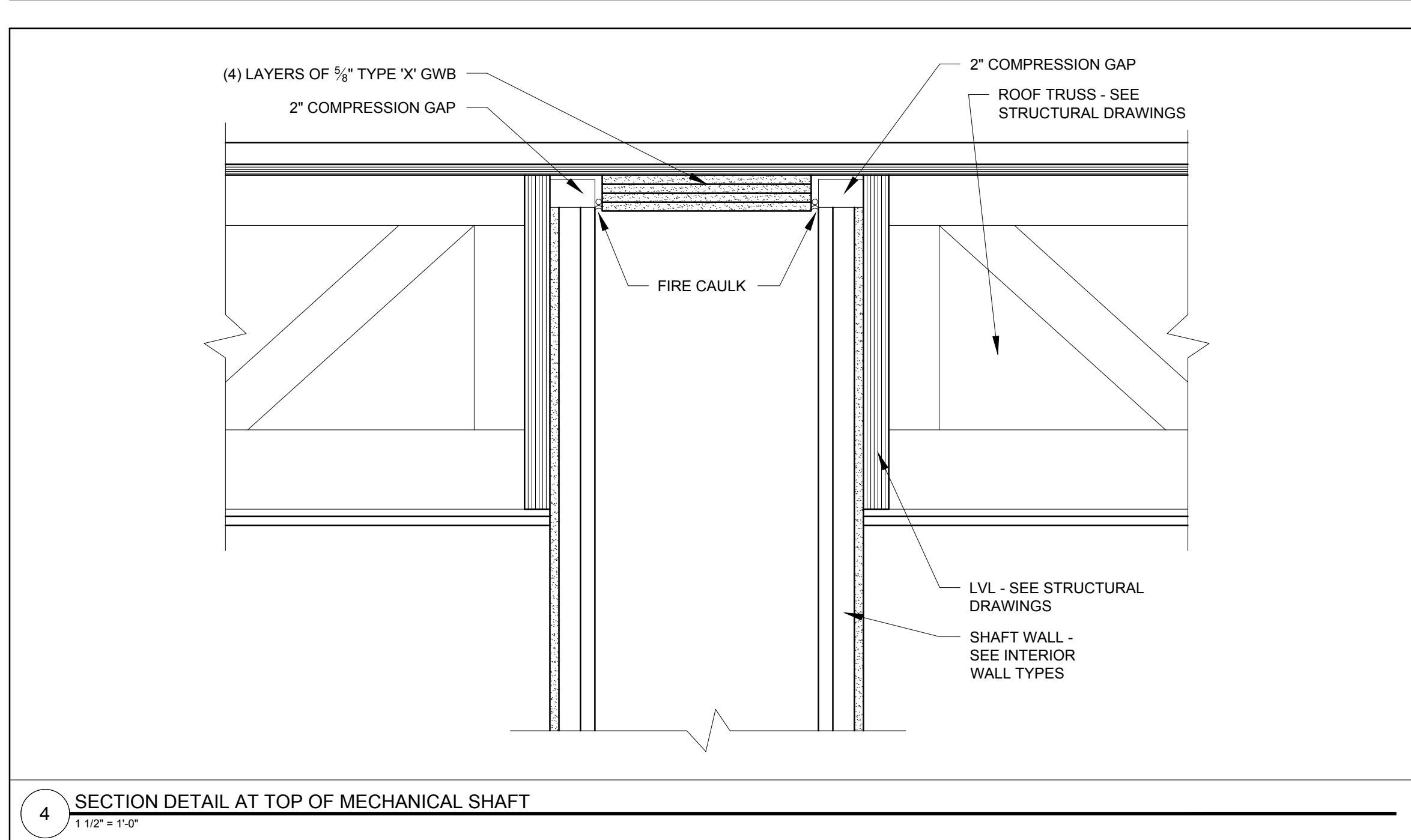
9 SECTION DETAIL AT TOP OF STAIR ENCLOSURE  
1/12" = 1'-0"



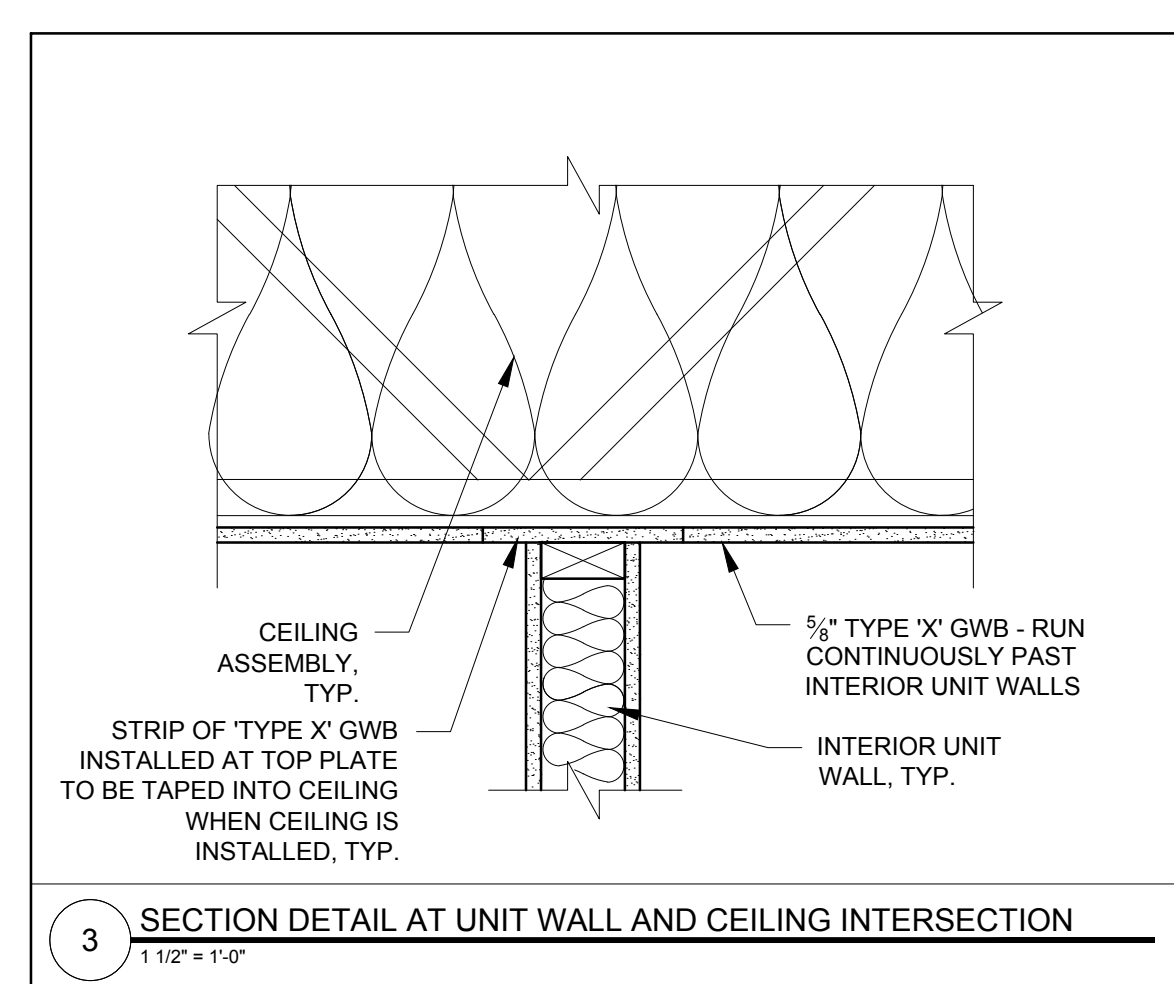
7 SECTION DETAIL AT ROOF EDGE OF STAIR ENCLOSURE  
1/12" = 1'-0"



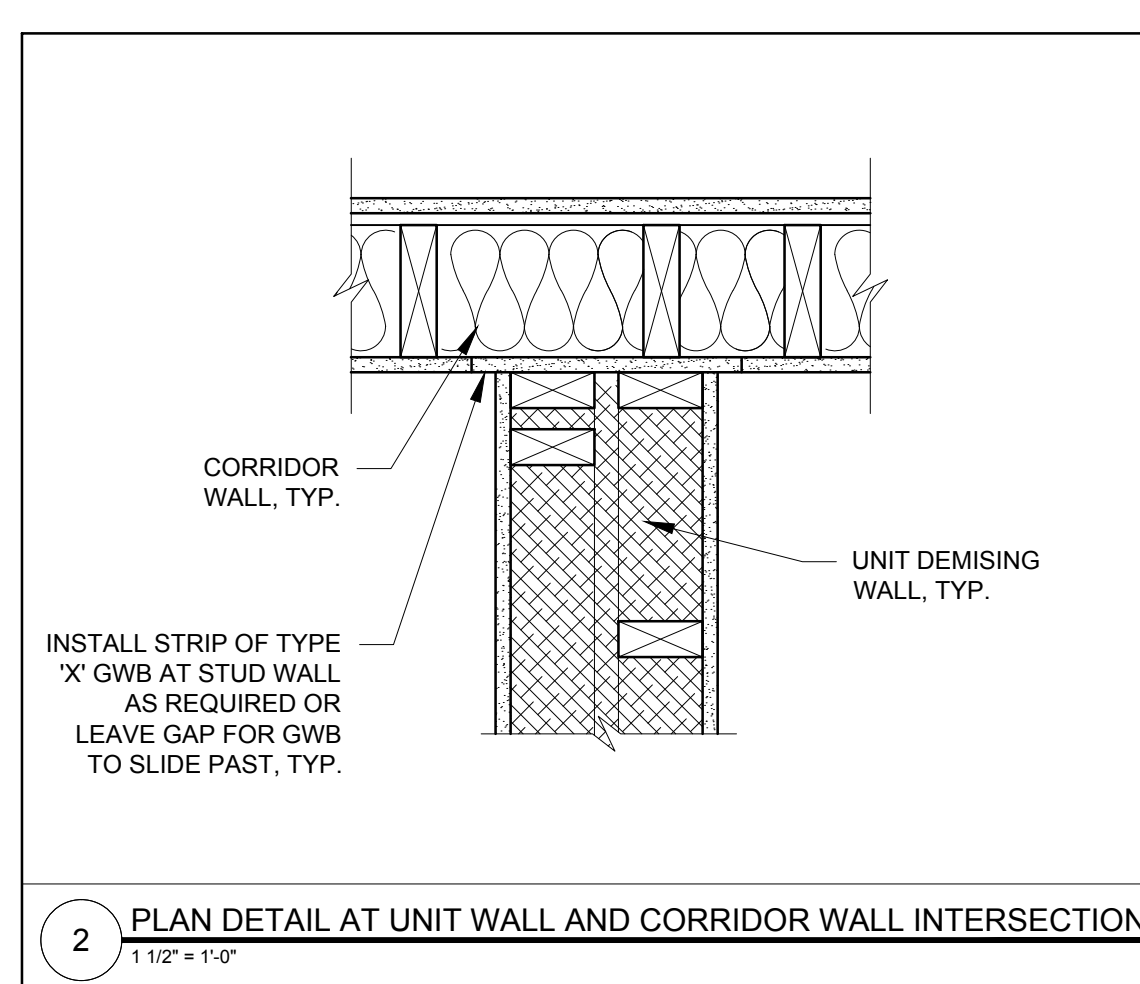
5 PLAN DETAIL AT CORNER BALCONY CONNECTION  
1/12" = 1'-0"



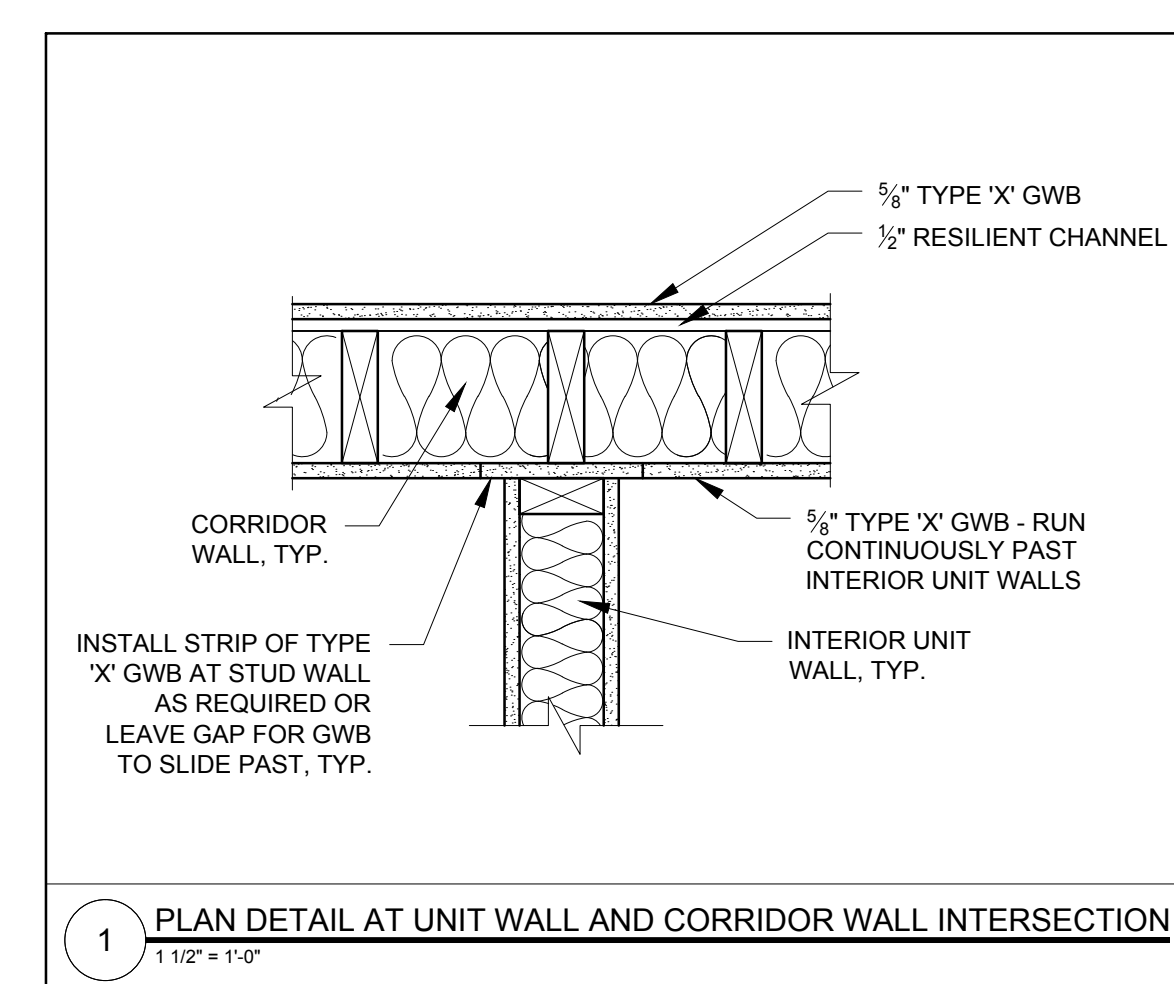
4 SECTION DETAIL AT TOP OF MECHANICAL SHAFT  
1/12" = 1'-0"



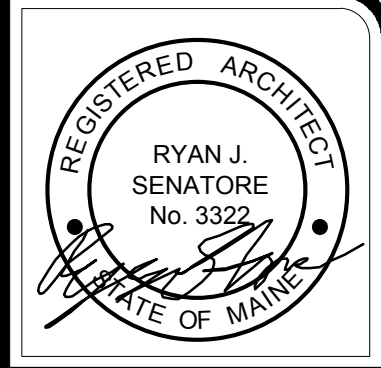
3 SECTION DETAIL AT UNIT WALL AND CEILING INTERSECTION  
1/12" = 1'-0"



2 PLAN DETAIL AT UNIT WALL AND CORRIDOR WALL INTERSECTION  
1/12" = 1'-0"



1 PLAN DETAIL AT UNIT WALL AND CORRIDOR WALL INTERSECTION  
1/12" = 1'-0"



© 2015 RYAN SENATORE ARCHITECTURE

APARTMENTS  
89 ANDERSON STREET  
PORTLAND, MAINE



RYAN SENATORE ARCHITECTURE  
565 CONGRESS STREET  
PORTLAND, MAINE 04101  
207-650-6414  
senatorearchitecture.com

CONSULTANTS:  
STRUCTURAL:  
Structural Integrity  
77 Oak Street  
Portland, ME 04101  
207-774-4614

REVISIONS:

DATE: JULY 3, 2015  
PROJECT No. 1415  
DRAWN BY: RRT / RJS  
CHECKED BY: RJS  
SCALE: AS NOTED

SHEET TITLE:  
DETAILS

A5-20