

© 2015 RYAN SENATORE ARCHITECTURE

APARTMENTS  
89 ANDERSON STREET  
PORTLAND, MAINE



RYAN SENATORE  
ARCHITECTURE  
565 CONGRESS STREET  
PORTLAND, MAINE 04101  
207-650-6414  
senatorearchitecture.com

CONSULTANTS:

STRUCTURAL:  
Structural Integrity  
77 Oak Street  
Portland, ME 04101  
207-774-4614

REVISIONS:

DATE: JULY 3, 2015

PROJECT No. 1415

DRAWN BY: RRT / RJS

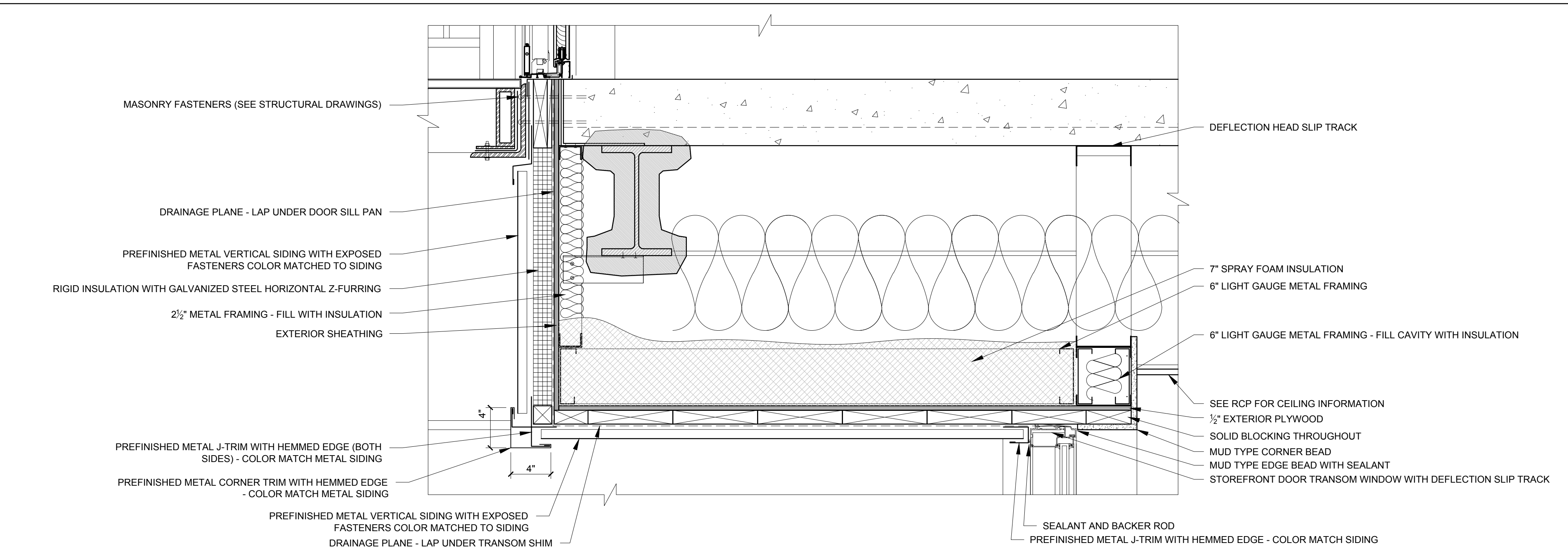
CHECKED BY: RJS

SCALE: AS NOTED

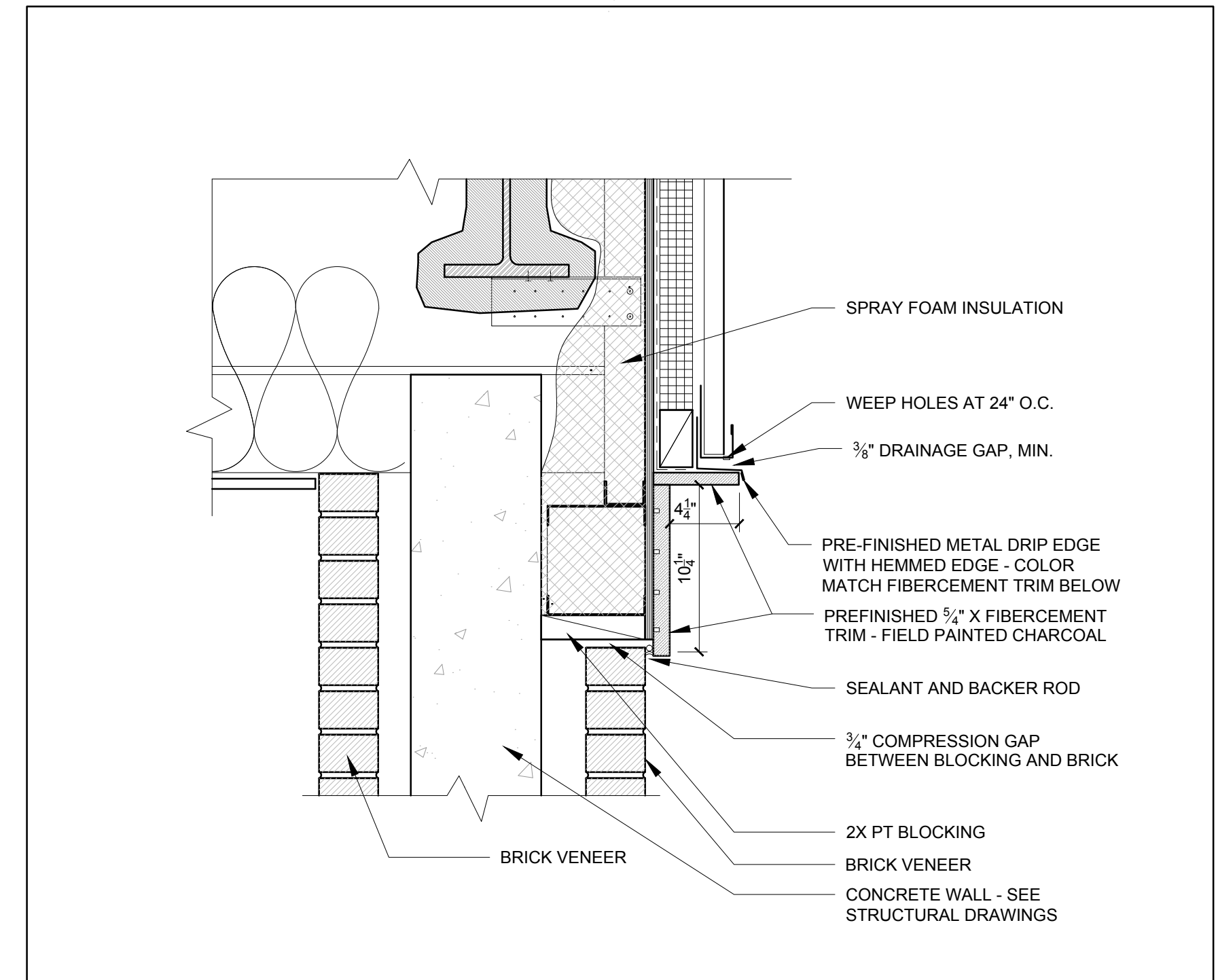
SHEET TITLE:

DETAILS

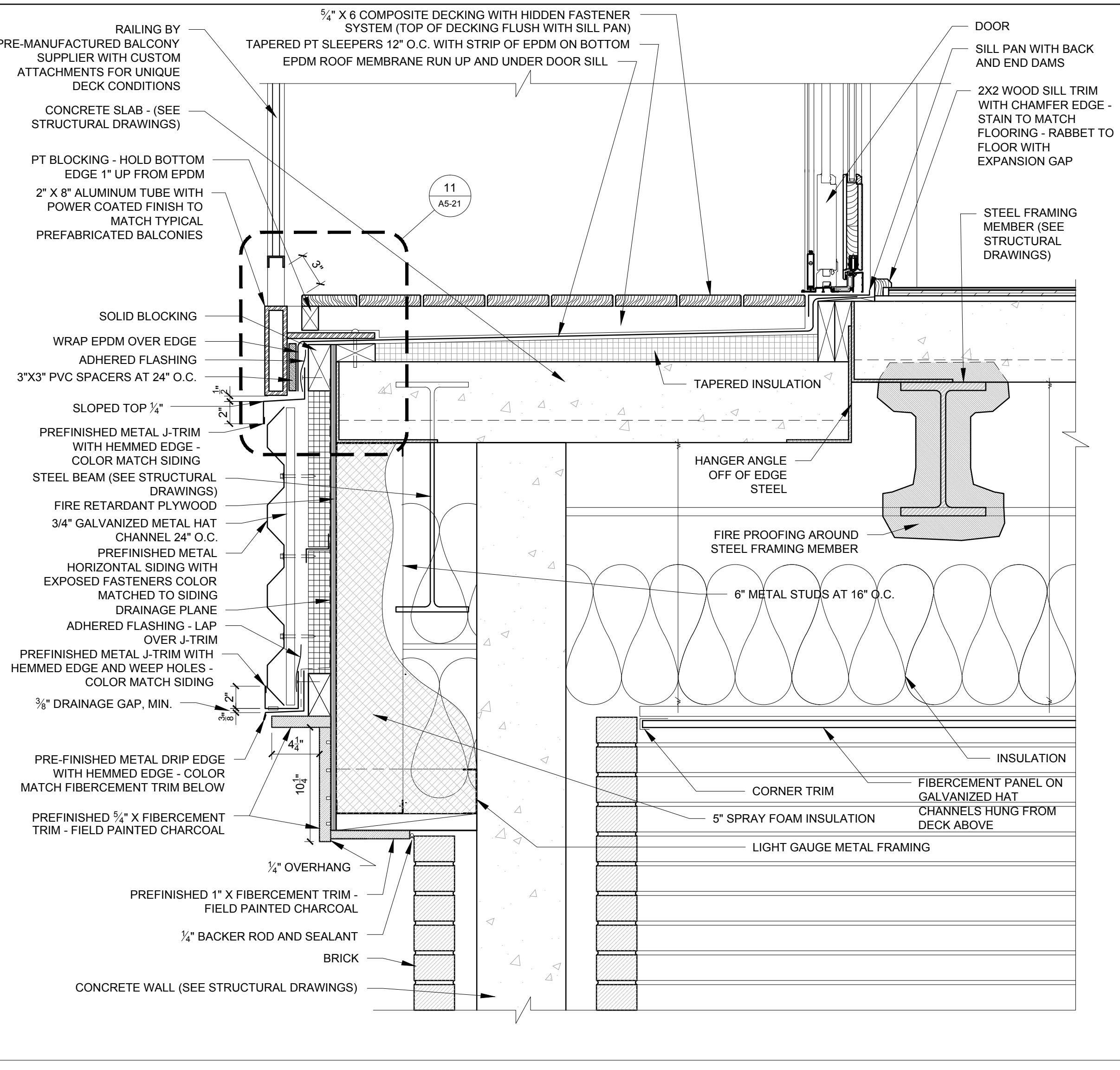
A5-17



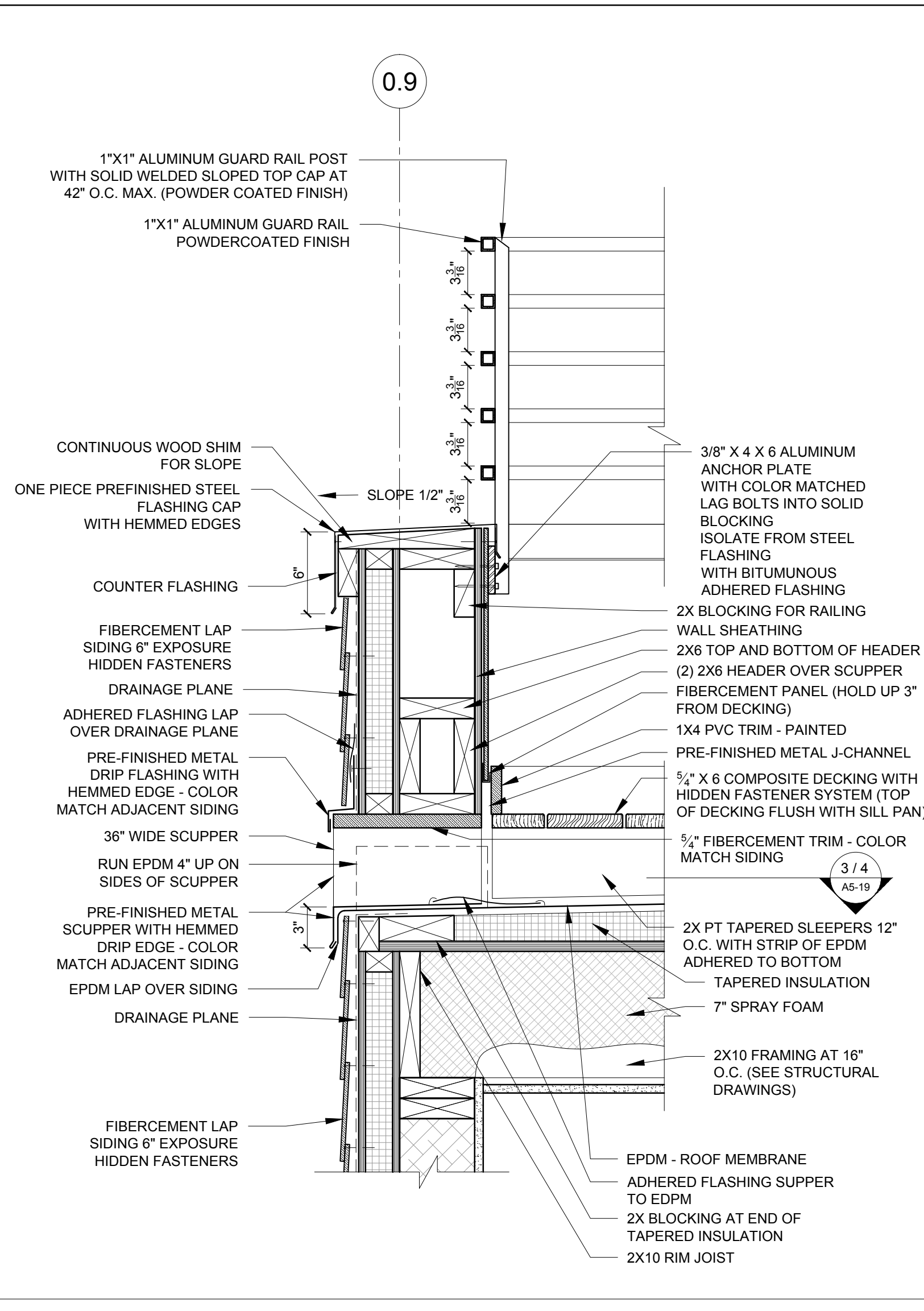
5 SECTION DETAIL AT EXTERIOR ENTRY INTO RESTURANT (COMMERICAL SPACE #1)  
1/12" = 1'-0"



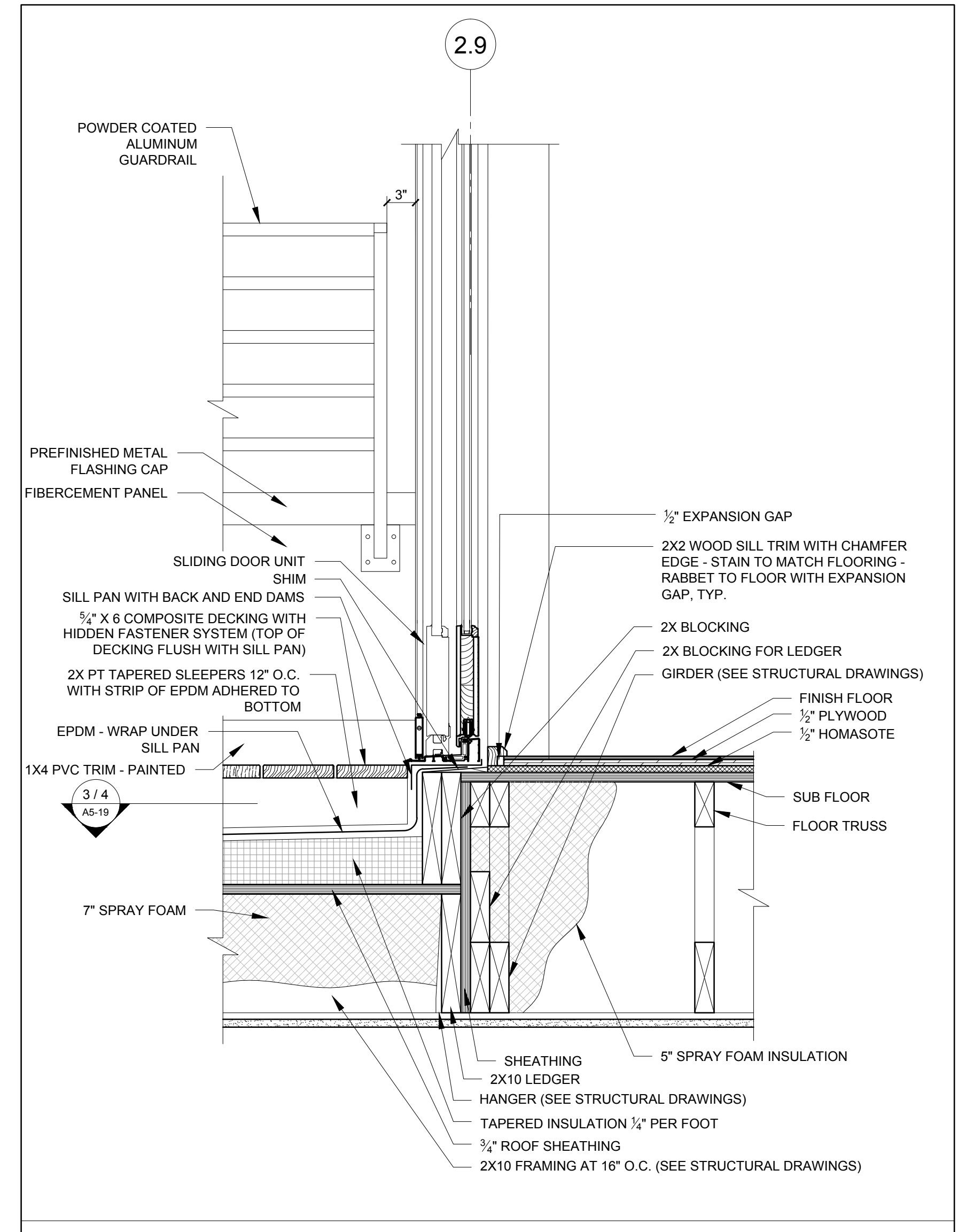
4 SECTION DETAIL AT FULL HEIGHT CONCRETE WALL WITH BRICK WALL VENEER BOTH SIDES  
1/12" = 1'-0"



3 WATERPROOF BALCONY DETAIL  
1/12" = 1'-0"



2 ROOF DECK DETAIL AT RAILING  
1/12" = 1'-0"



1 ROOF DECK DETAIL AT DOOR  
1/12" = 1'-0"