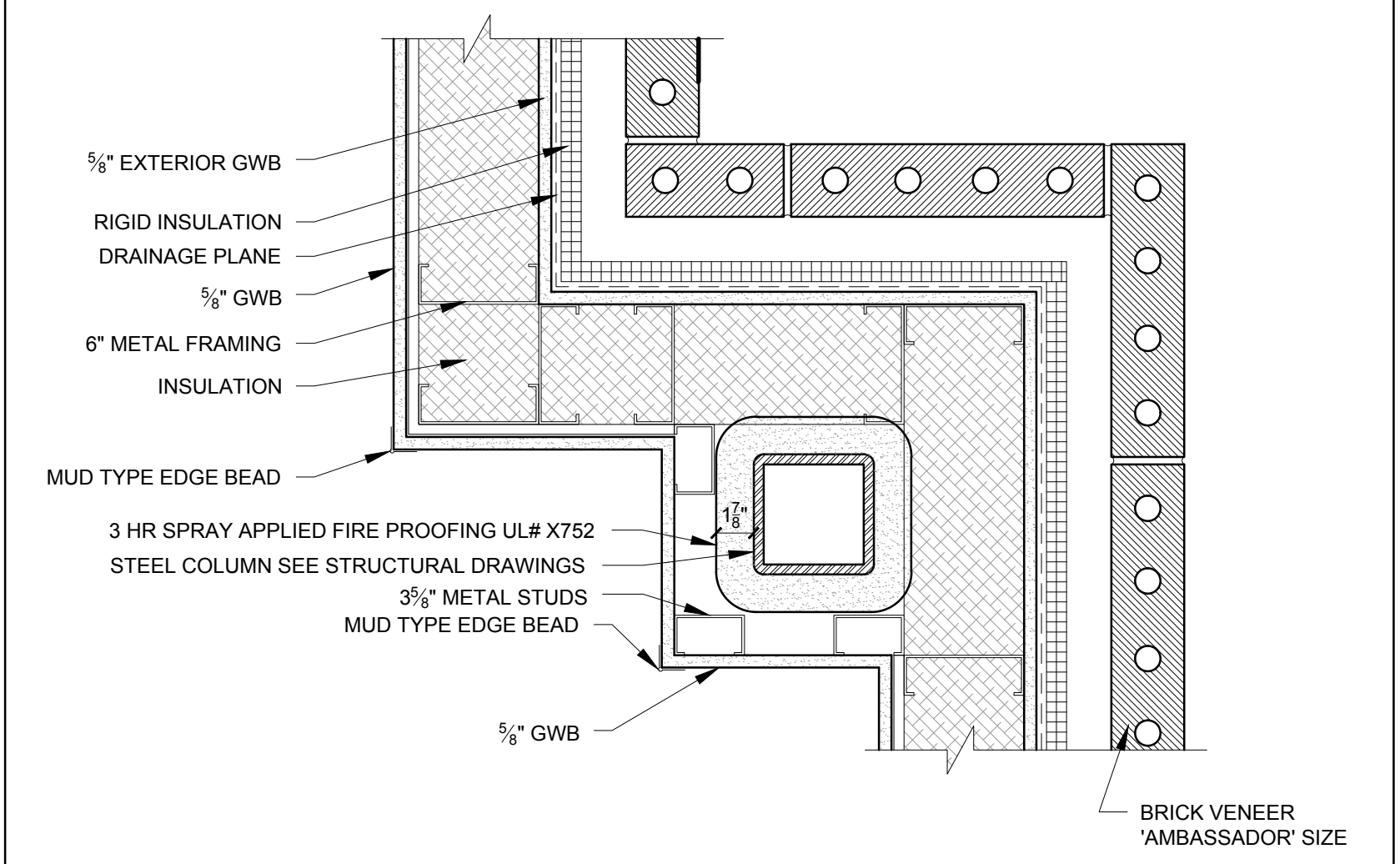
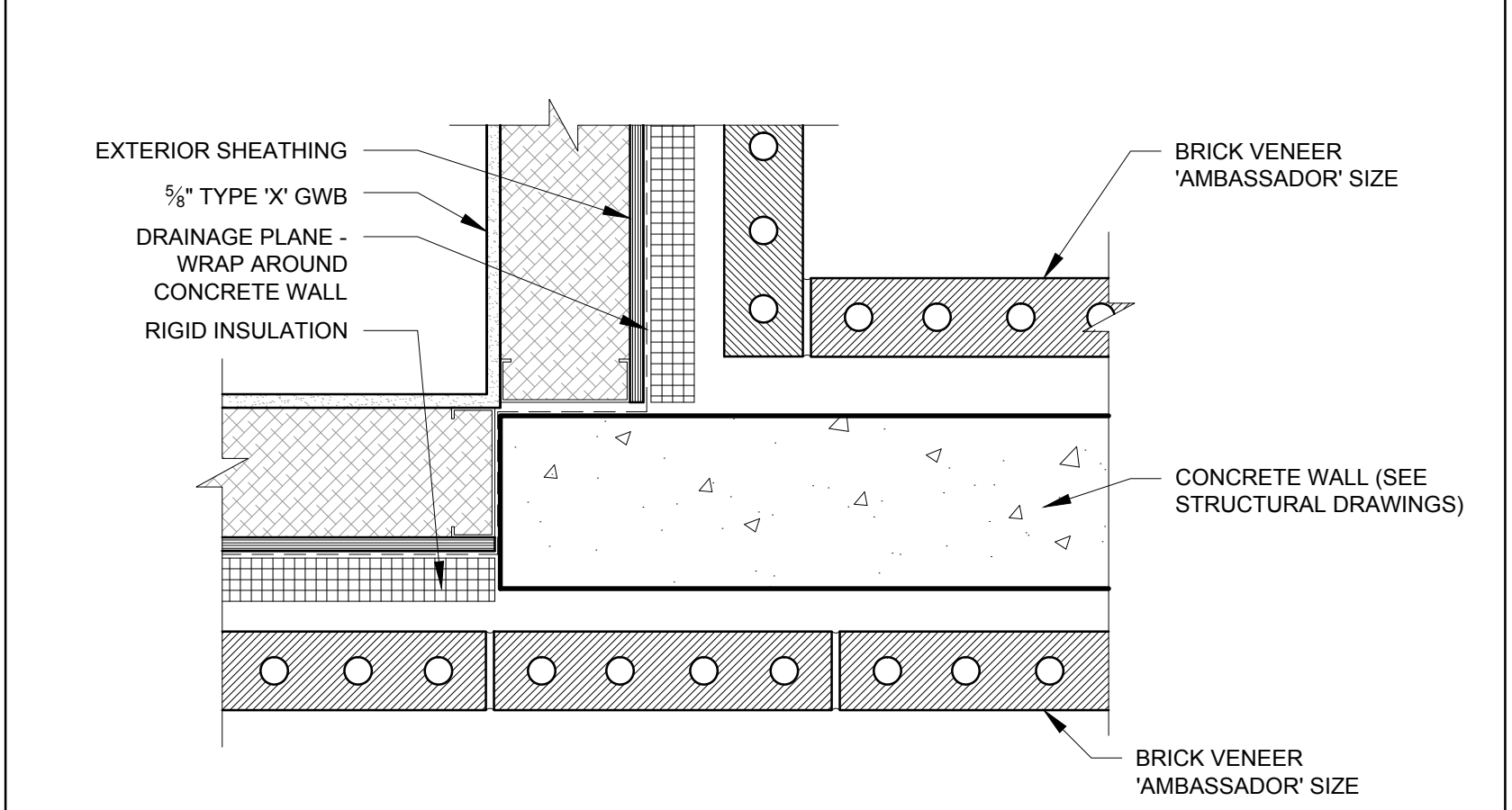


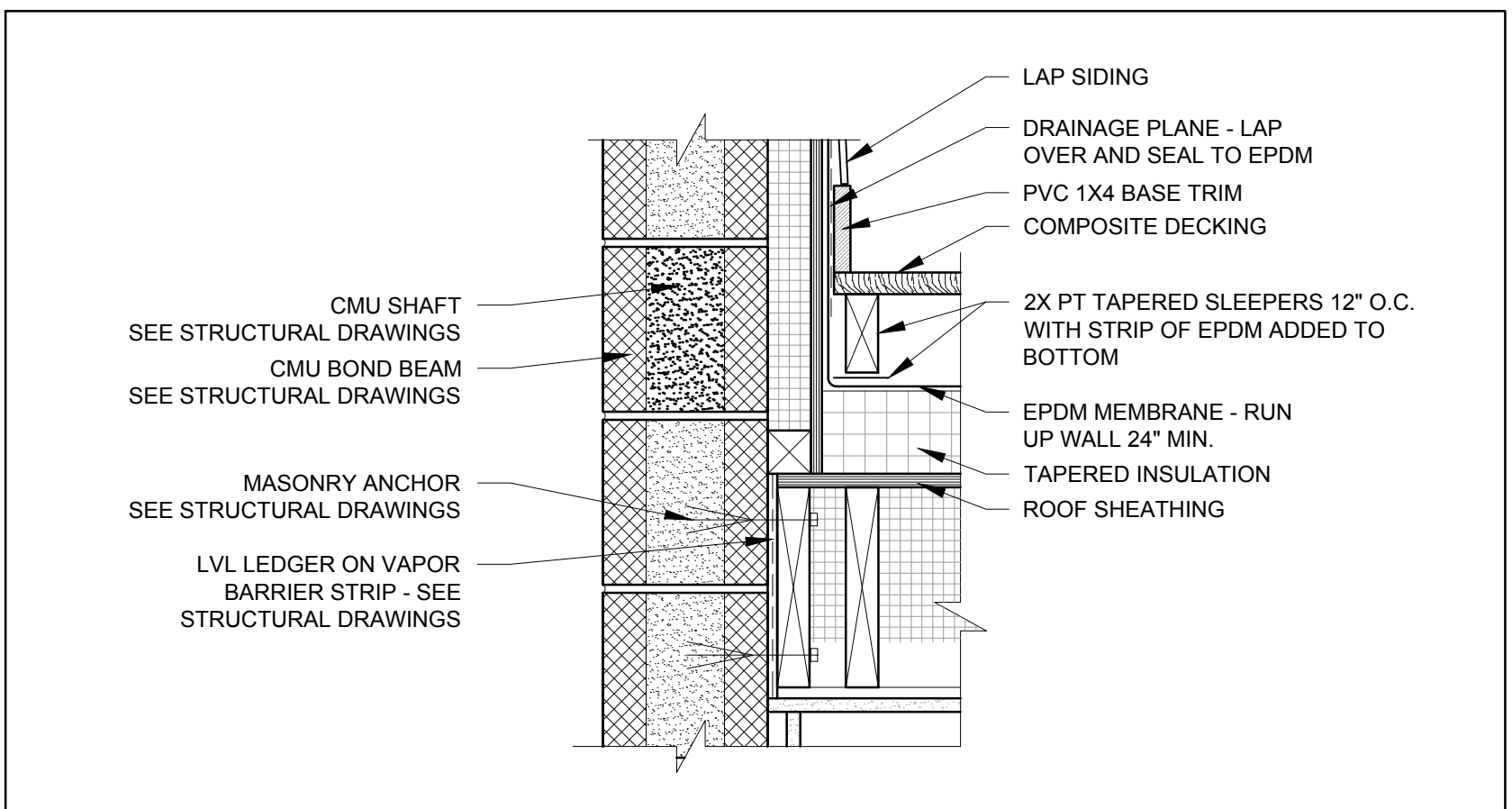
9 TYPICAL GWB CONTROL JOINT DETAIL  
1 1/2" = 1'-0"



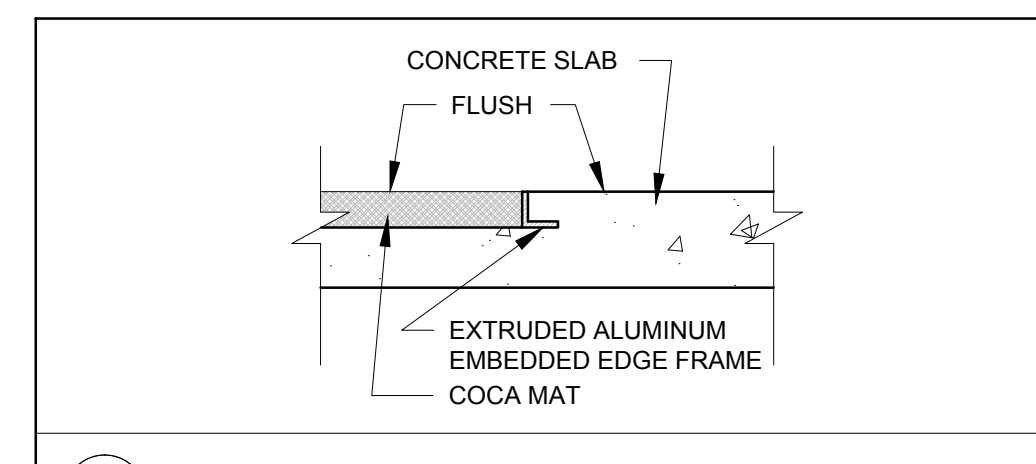
8 PLAN DETAIL AT ELECTRICAL WALL ENCLOSURE  
1 1/2" = 1'-0"



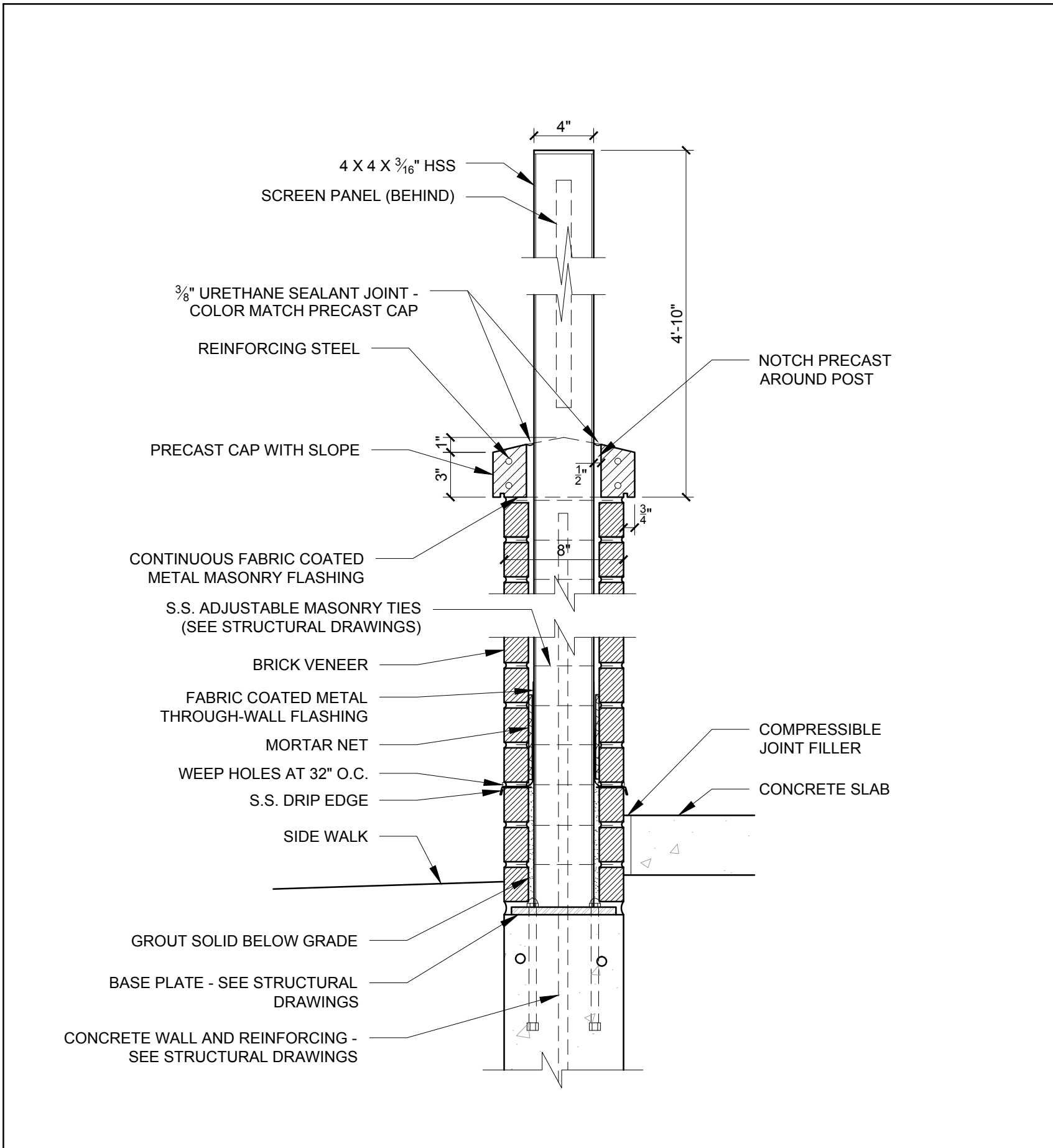
7 PLAN DETAIL AT ELECTRICAL WALL ENCLOSURE  
1 1/2" = 1'-0"



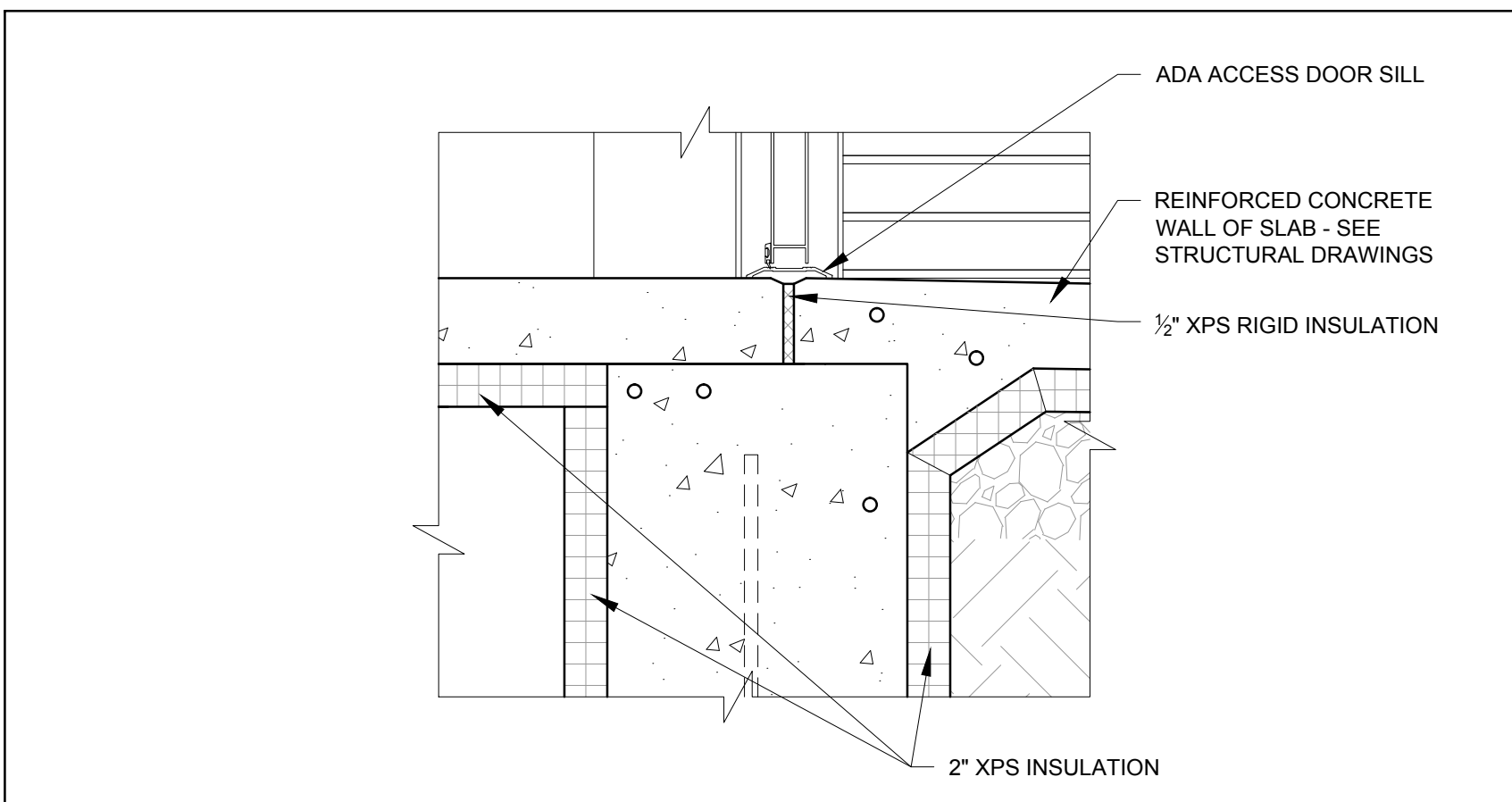
6 SECTION DETAIL AT ROOF DECK AND STAIR WALL  
1 1/2" = 1'-0"



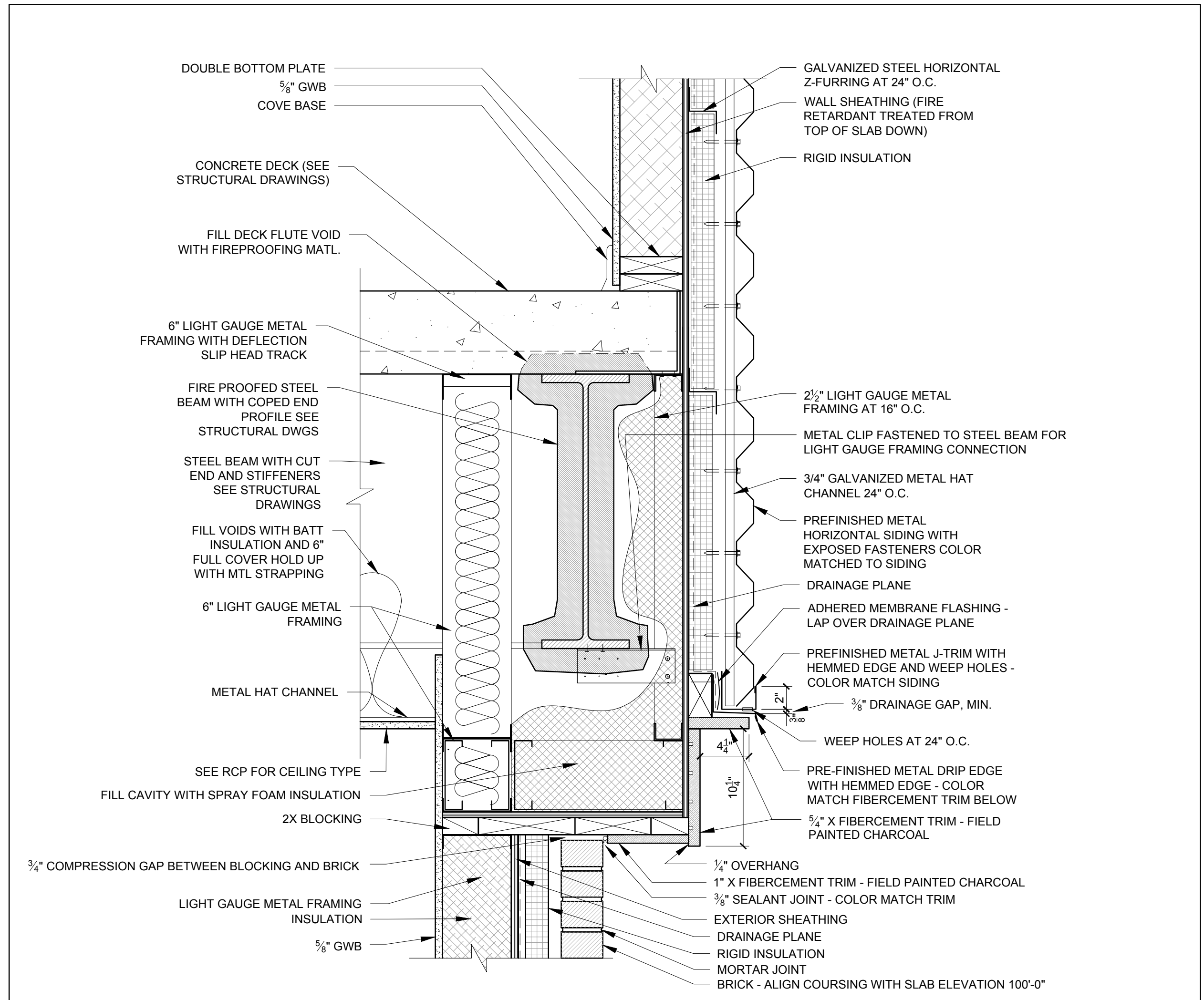
5 RECESSED ENTRY MAT EDGE FRAME SECTION DETAIL  
1 1/2" = 1'-0"



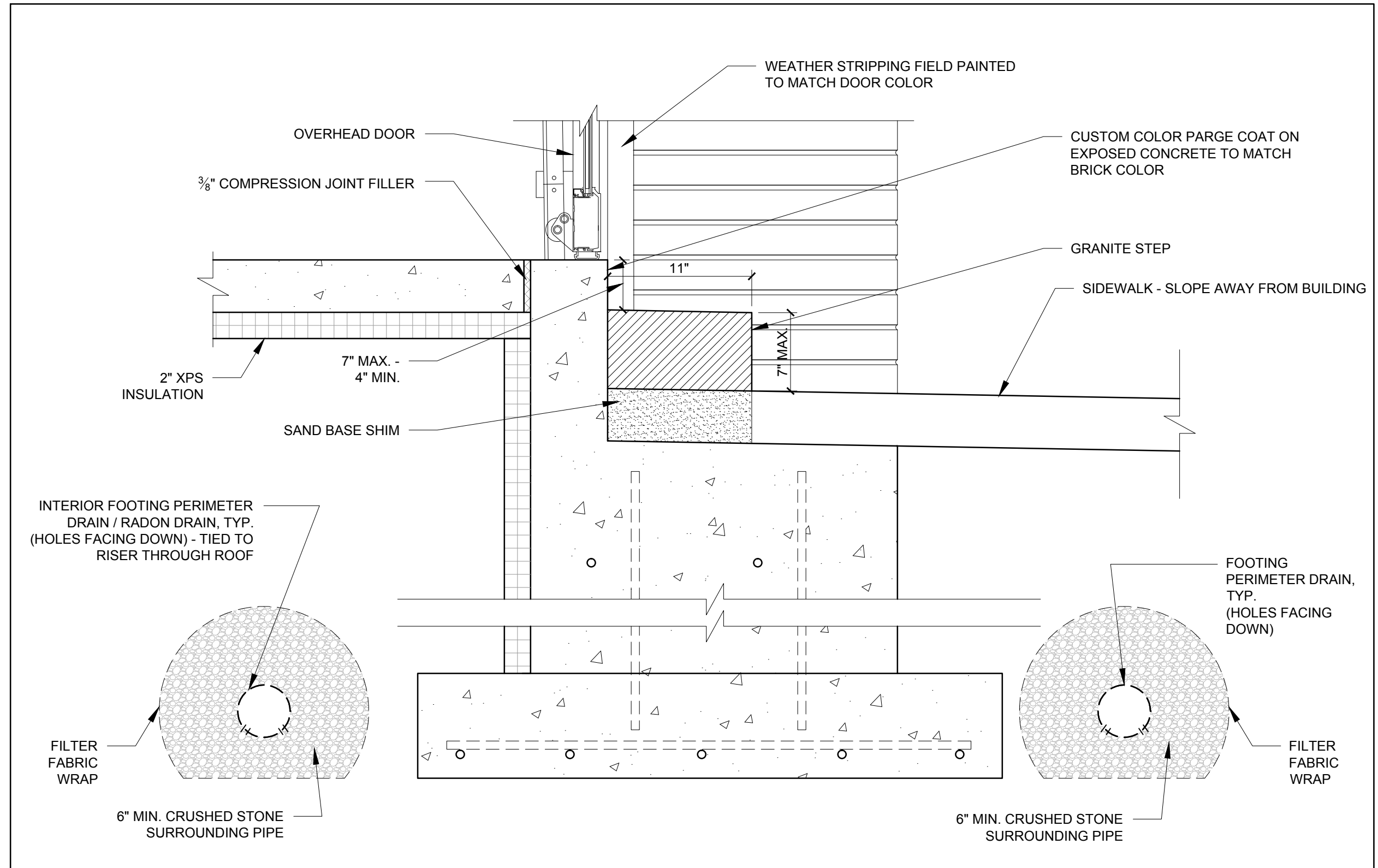
4 SCREEN WALL AT RAMP ENTRY  
1 1/2" = 1'-0"



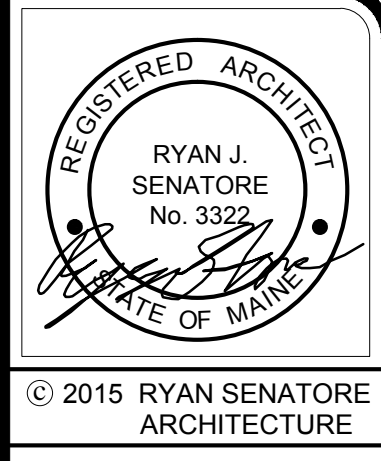
2 FOUNDATION DETAIL AT APARTEMENT DOOR SILL ENTRY ENTRY  
1 1/2" = 1'-0"



3 SECTION DETAIL AT BRICK SIDING AND BOTTOM TRIM  
1 1/2" = 1'-0"



1 FOUNDATION DETAIL AT COMMERCIAL SPACE OVERHEAD DOOR  
1 1/2" = 1'-0"



© 2015 RYAN SENATORE ARCHITECTURE

APARTMENTS  
89 ANDERSON STREET  
PORTLAND, MAINE



RYAN SENATORE ARCHITECTURE  
565 CONGRESS STREET  
PORTLAND, MAINE 04101  
207-650-6414  
senatorearchitecture.com

CONSULTANTS:  
STRUCTURAL:  
Structural Integrity  
77 Oak Street  
Portland, ME 04101  
207-774-4614

REVISIONS:

DATE: JULY 3, 2015  
PROJECT No. 1415  
DRAWN BY: RRT / RJS  
CHECKED BY: RJS  
SCALE: AS NOTED  
SHEET TITLE:  
DETAILS

A5-13