

© 2015 RYAN SENATORE ARCHITECTURE

APARTMENTS
89 ANDERSON STREET
PORTLAND, MAINE



RYAN SENATORE
ARCHITECTURE
565 CONGRESS STREET
PORTLAND, MAINE 04101
207-650-6414
senatorearchitecture.com

CONSULTANTS:

STRUCTURAL:
Structural Integrity
77 Oak Street
Portland, ME 04101
207-774-4614

REVISIONS:

DATE: JULY 3, 2015

PROJECT No. 1415

DRAWN BY: RRT / RJS

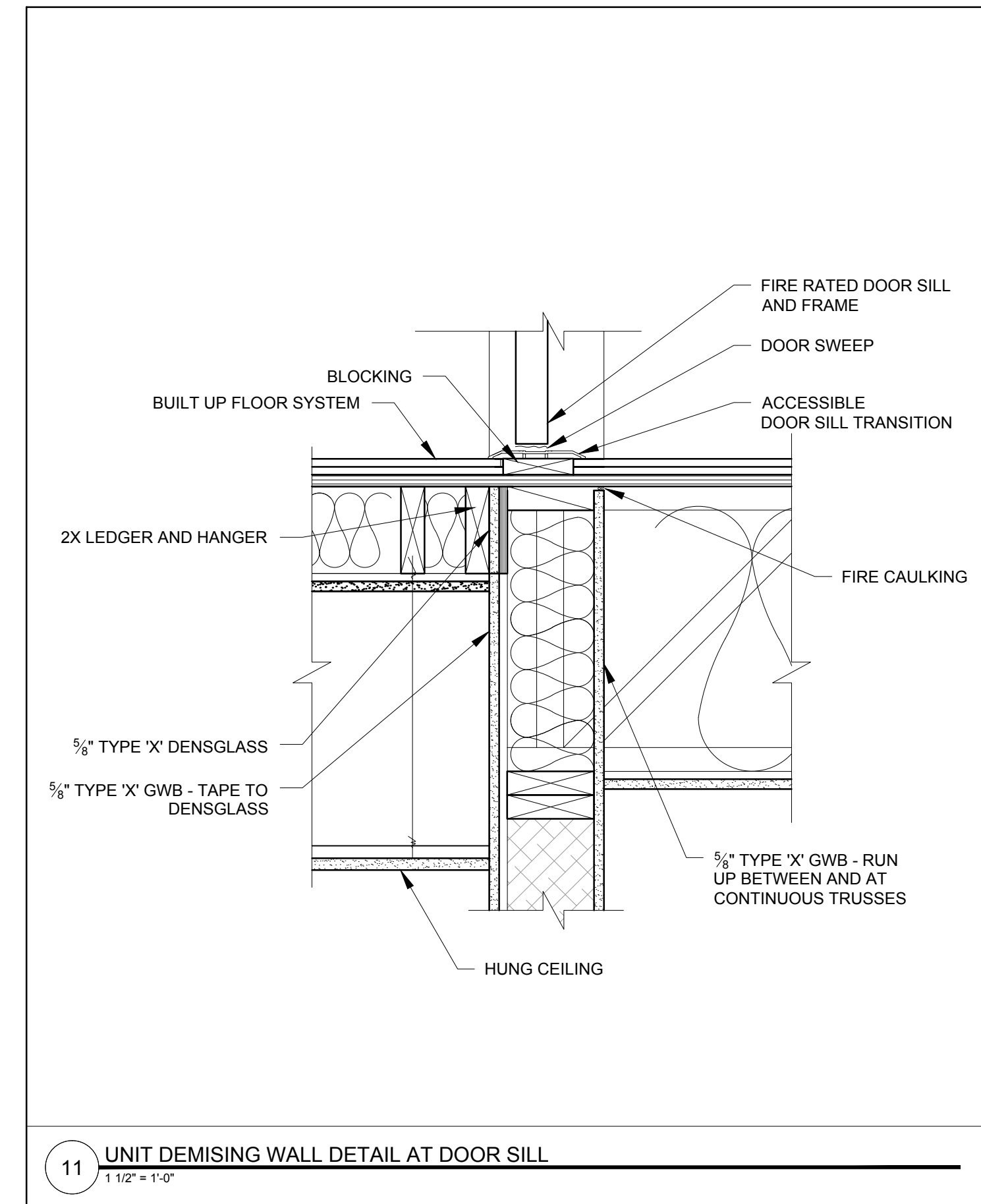
CHECKED BY: RJS

SCALE: AS NOTED

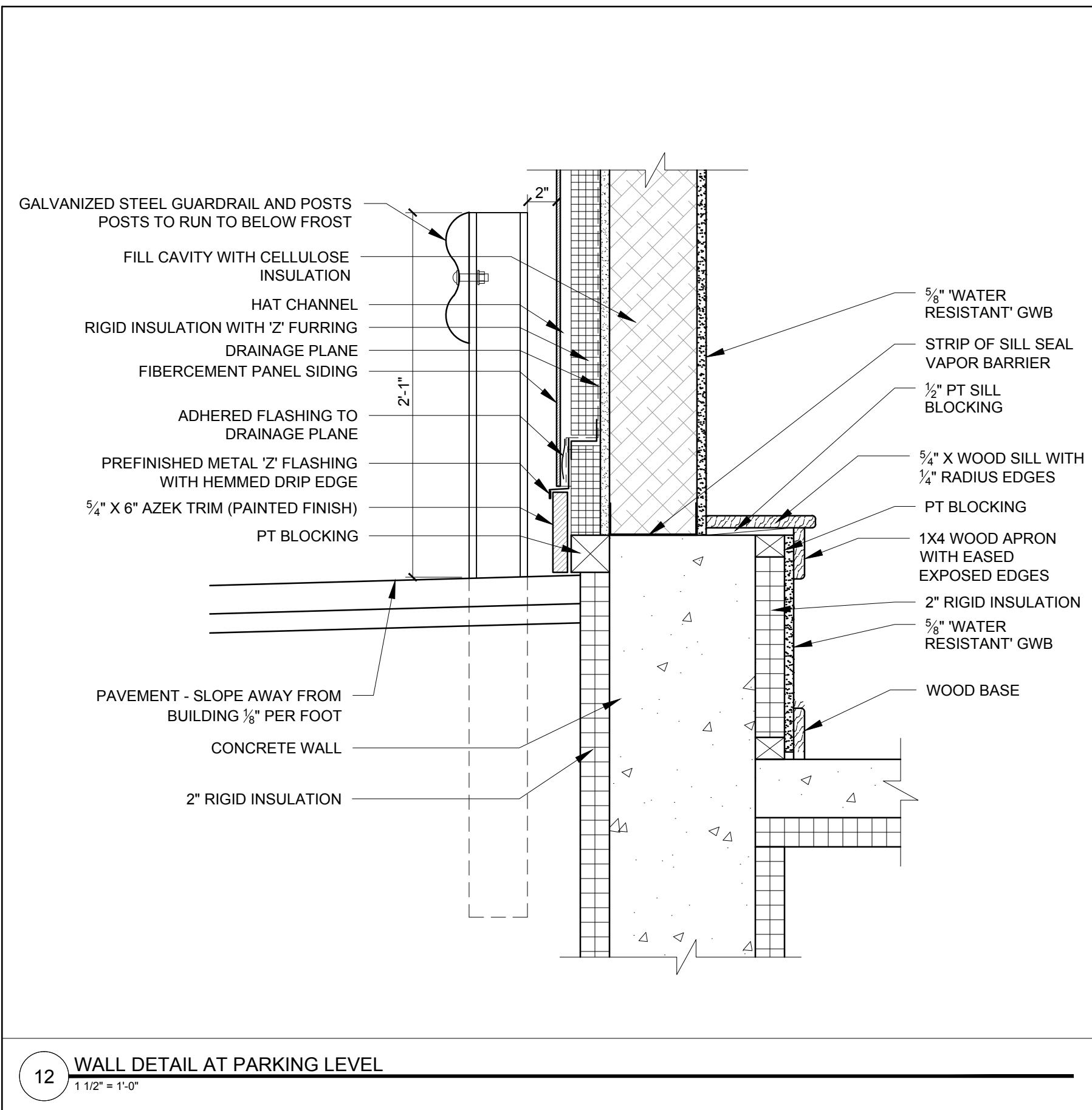
SHEET TITLE:

DETAILS

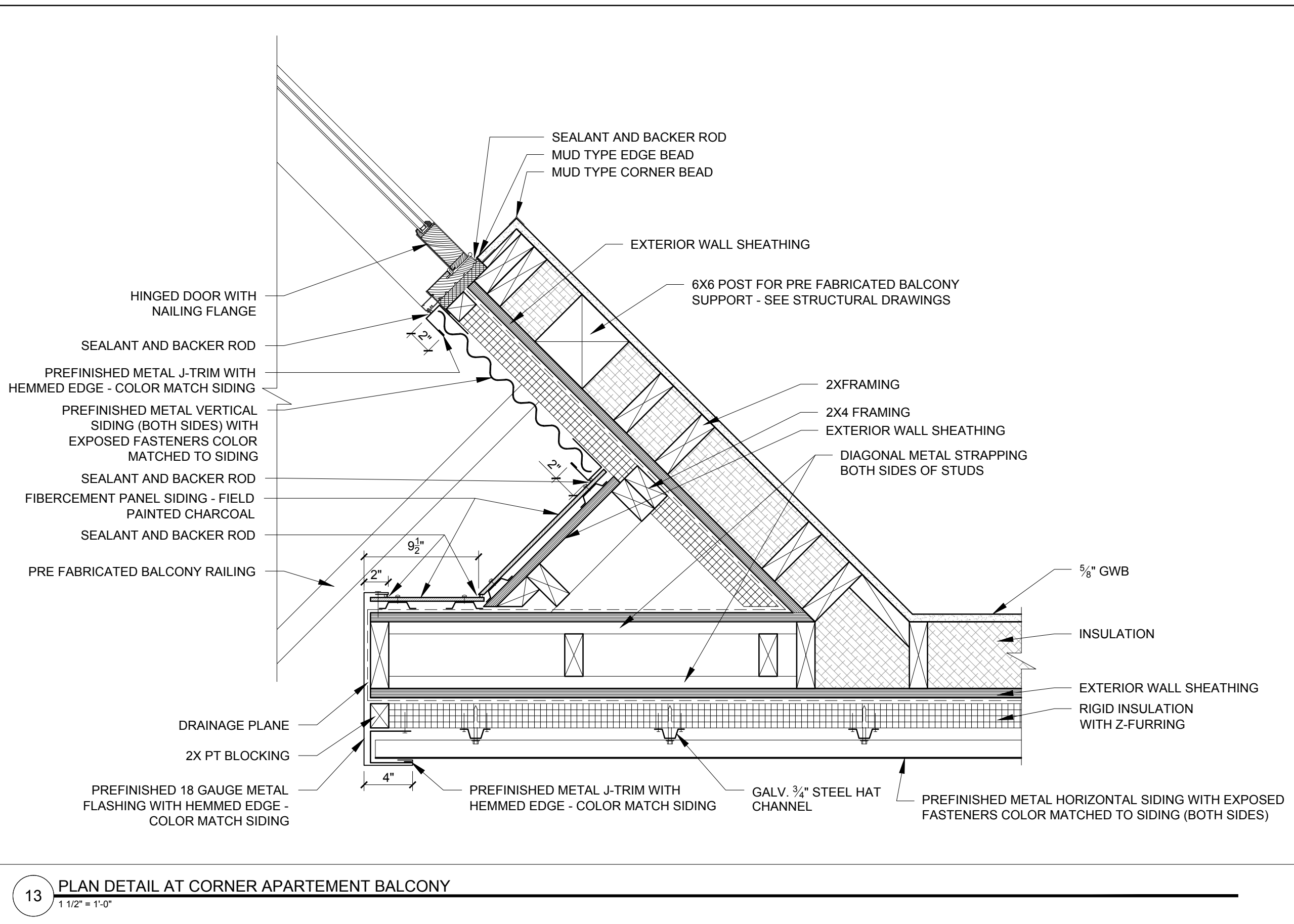
A5-12



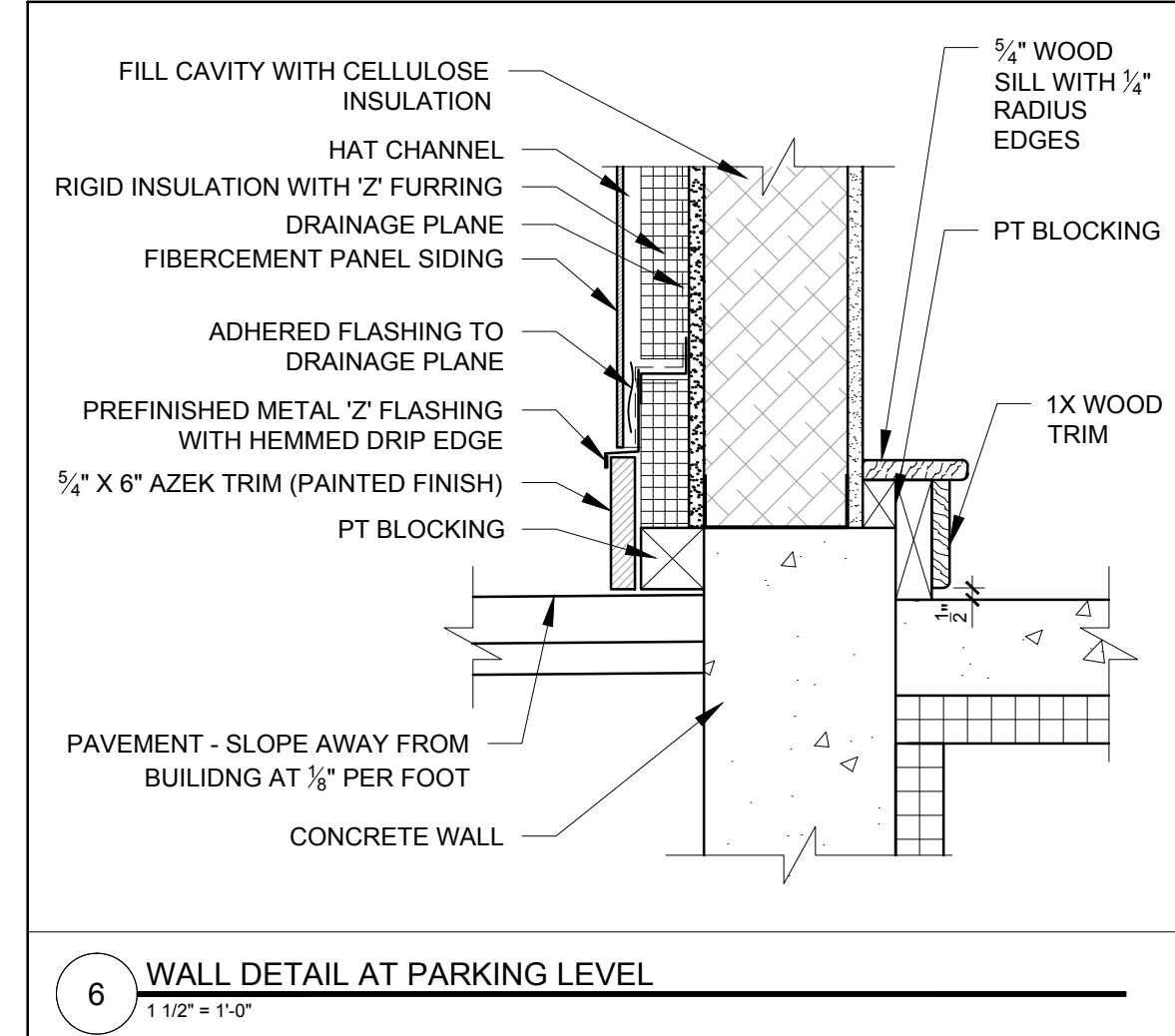
11 UNIT DEMISING WALL DETAIL AT DOOR SILL
1 1/2" = 1'-0"



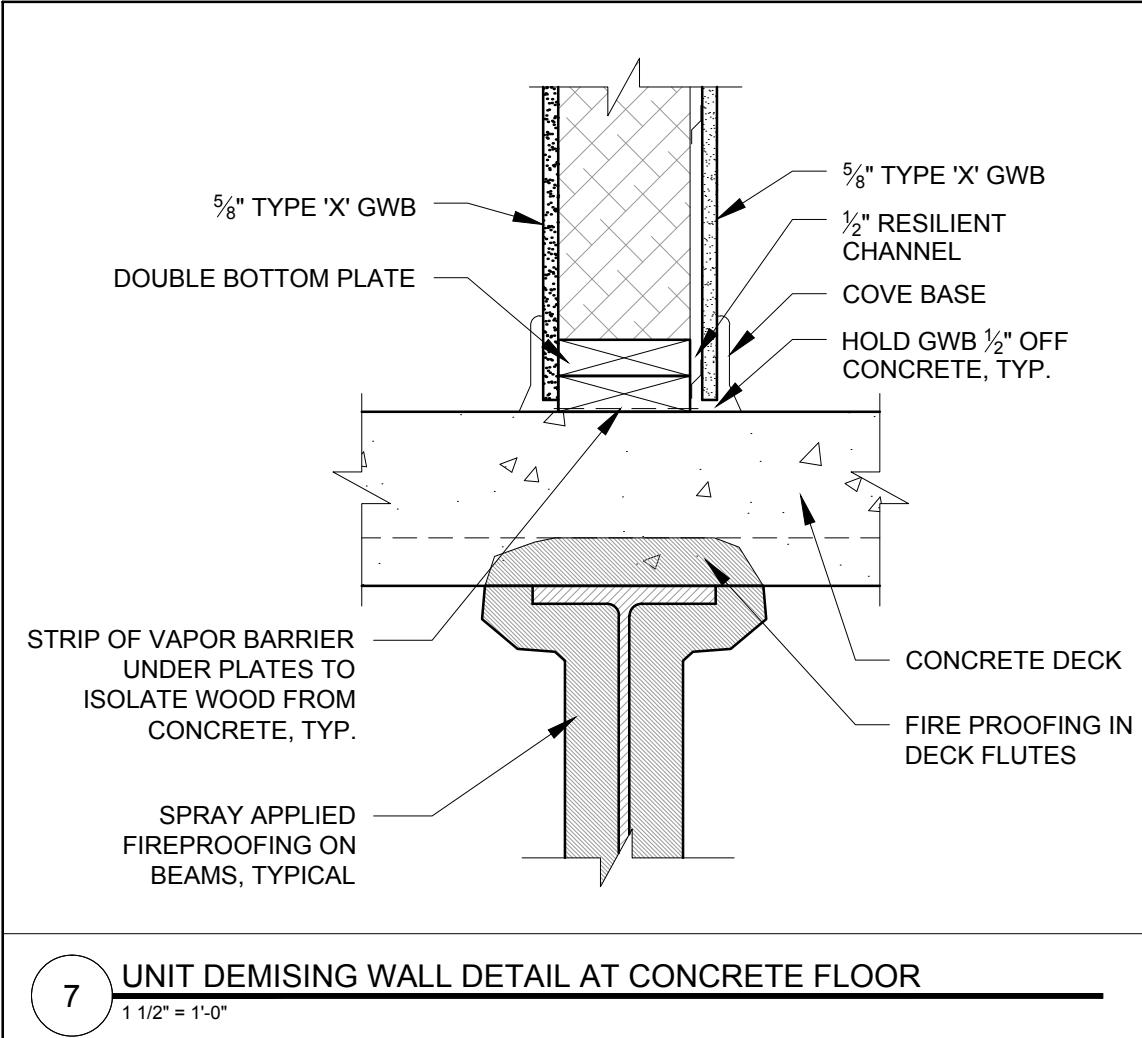
12 WALL DETAIL AT PARKING LEVEL
1 1/2" = 1'-0"



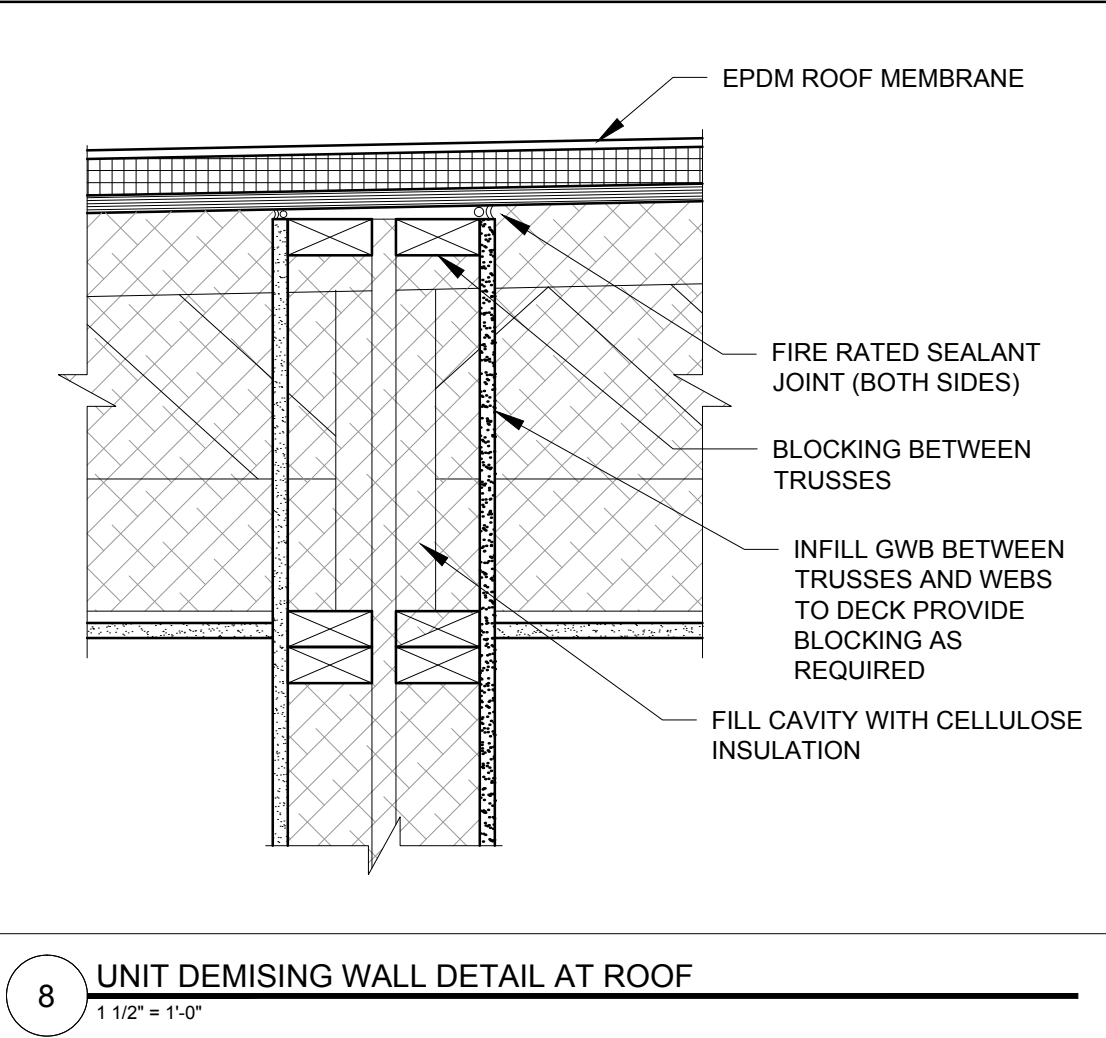
13 PLAN DETAIL AT CORNER APARTEMENT BALCONY
1 1/2" = 1'-0"



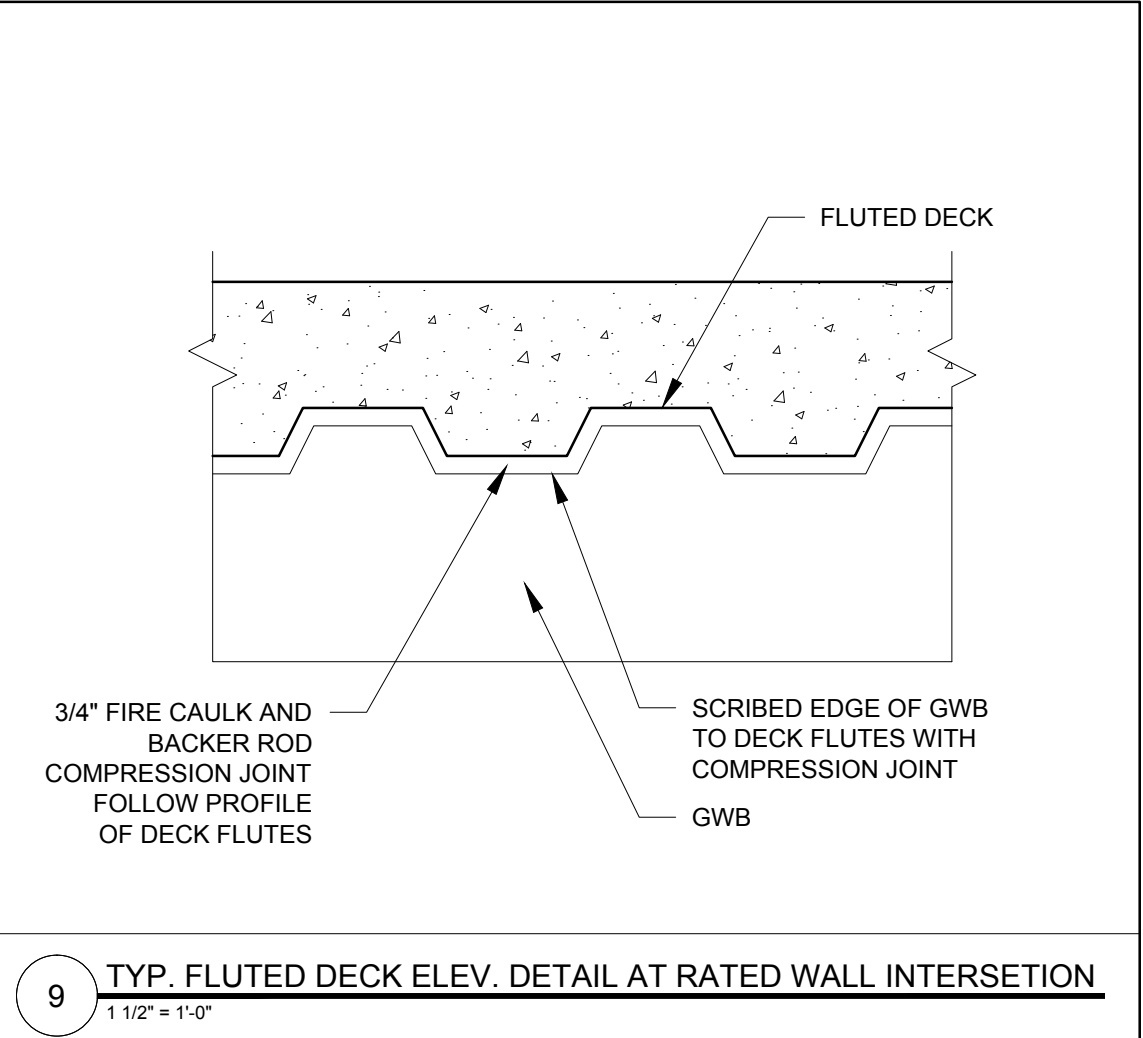
6 WALL DETAIL AT PARKING LEVEL
1 1/2" = 1'-0"



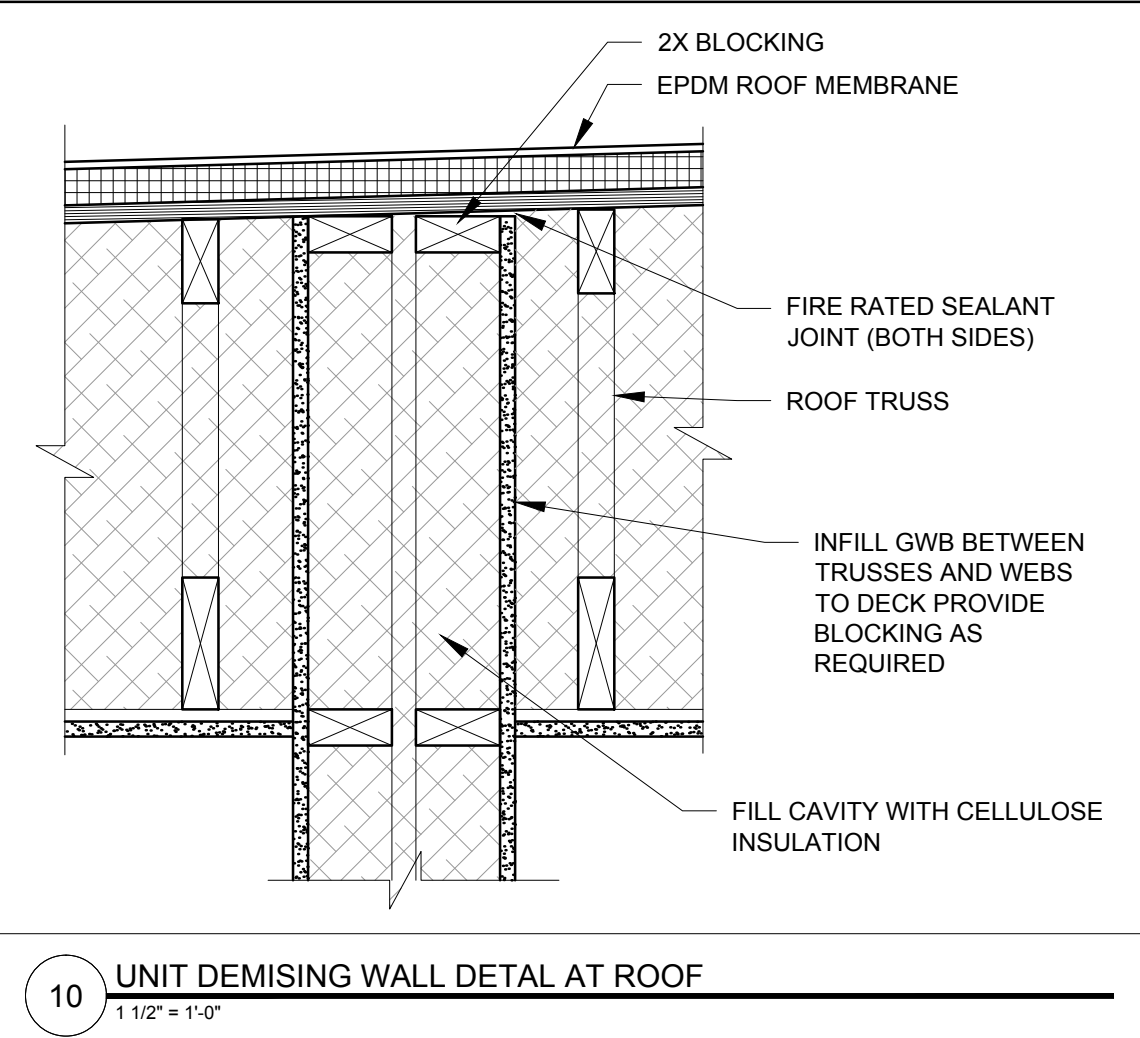
7 UNIT DEMISING WALL DETAIL AT CONCRETE FLOOR
1 1/2" = 1'-0"



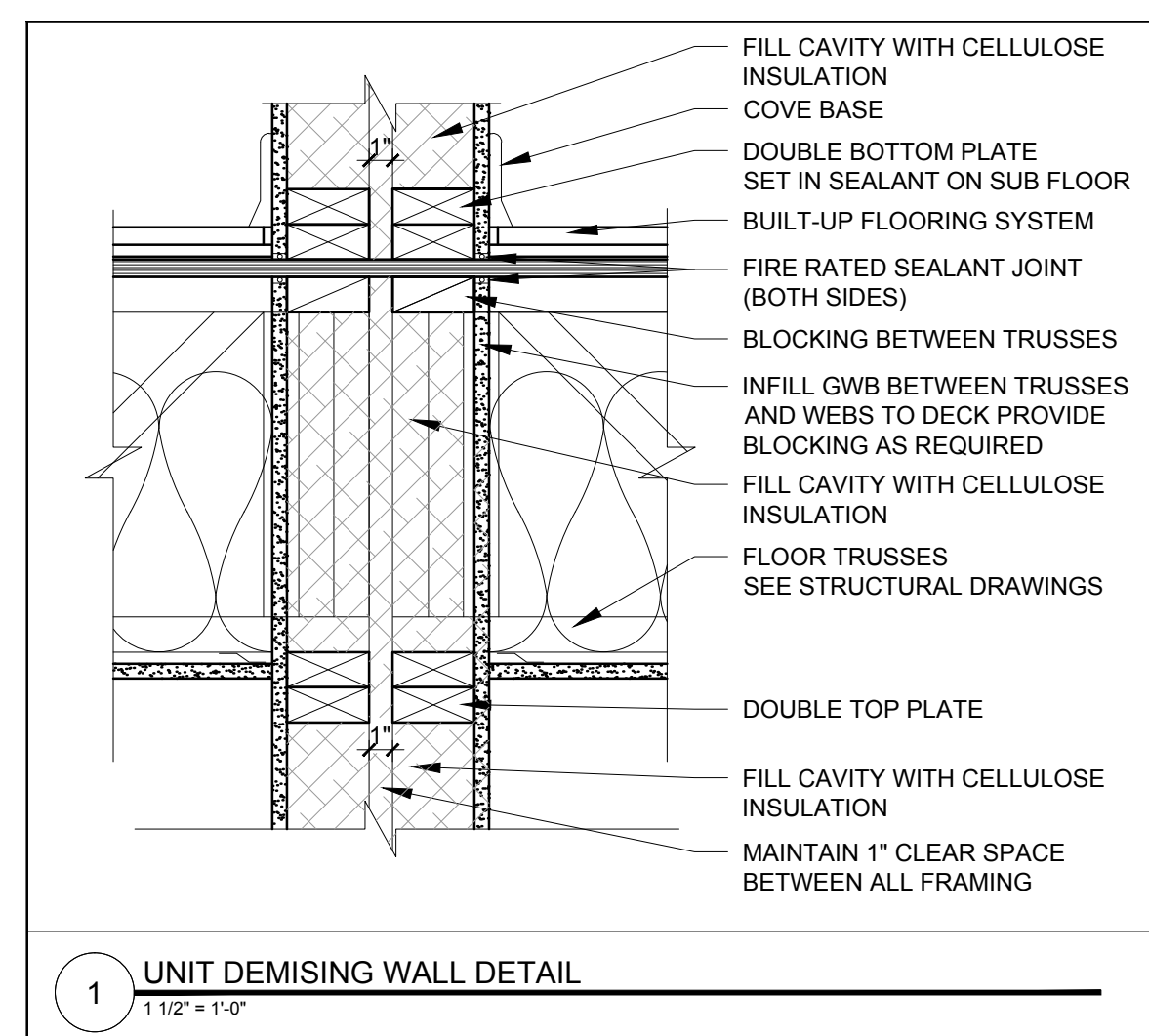
8 UNIT DEMISING WALL DETAIL AT ROOF
1 1/2" = 1'-0"



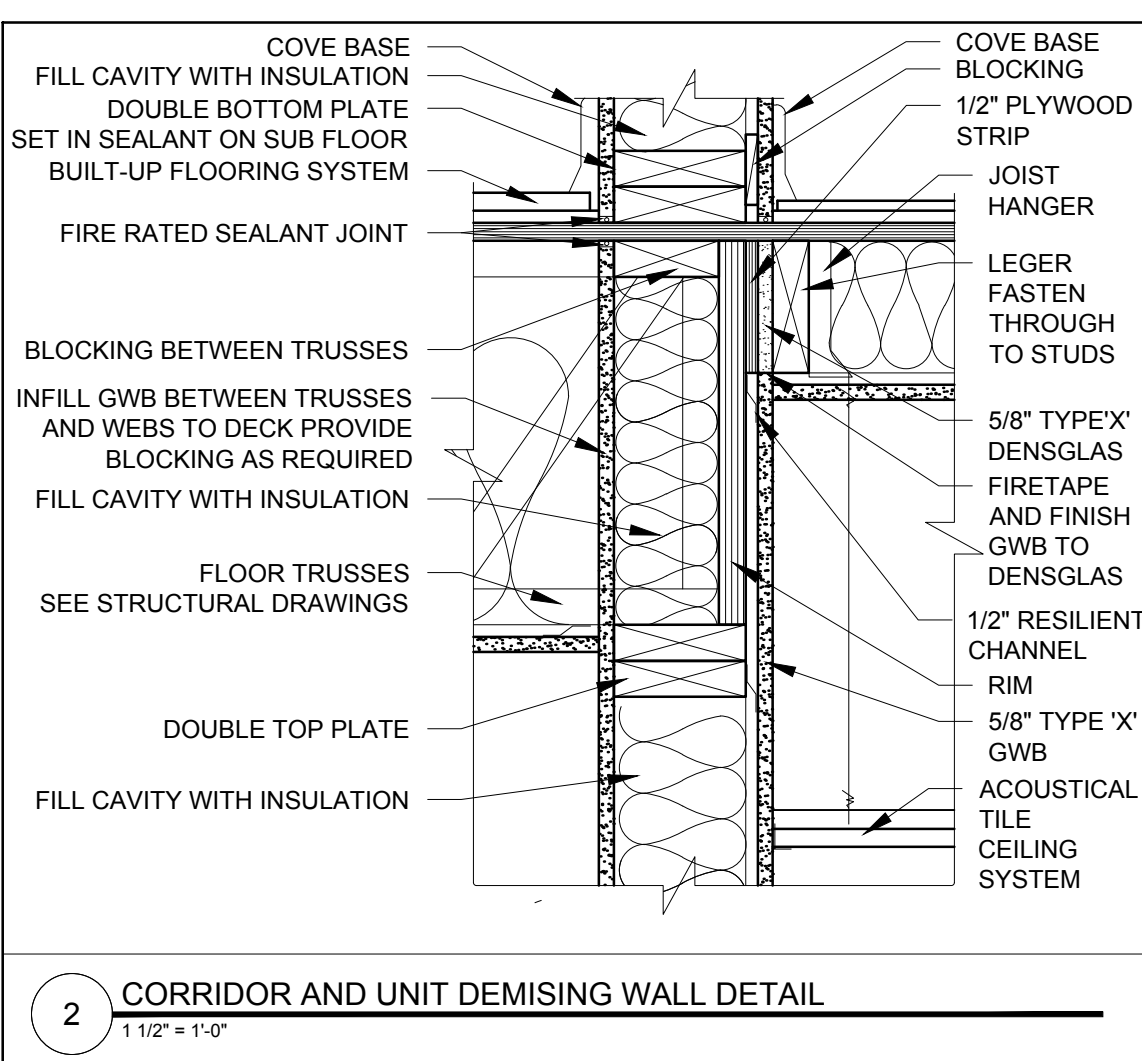
9 TYP. FLUTED DECK ELEV. DETAIL AT RATED WALL INTERSECTION
1 1/2" = 1'-0"



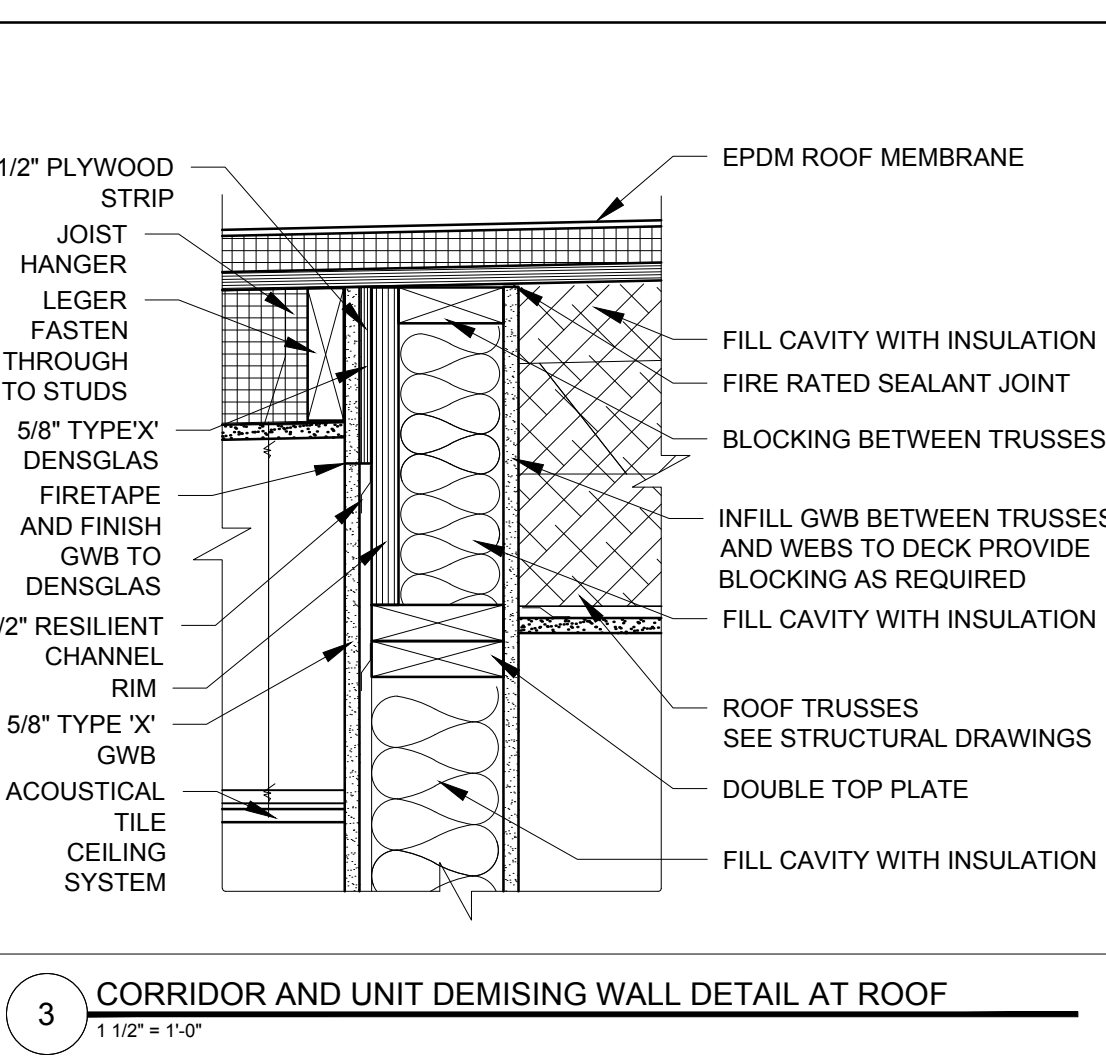
10 UNIT DEMISING WALL DETAL AT ROOF
1 1/2" = 1'-0"



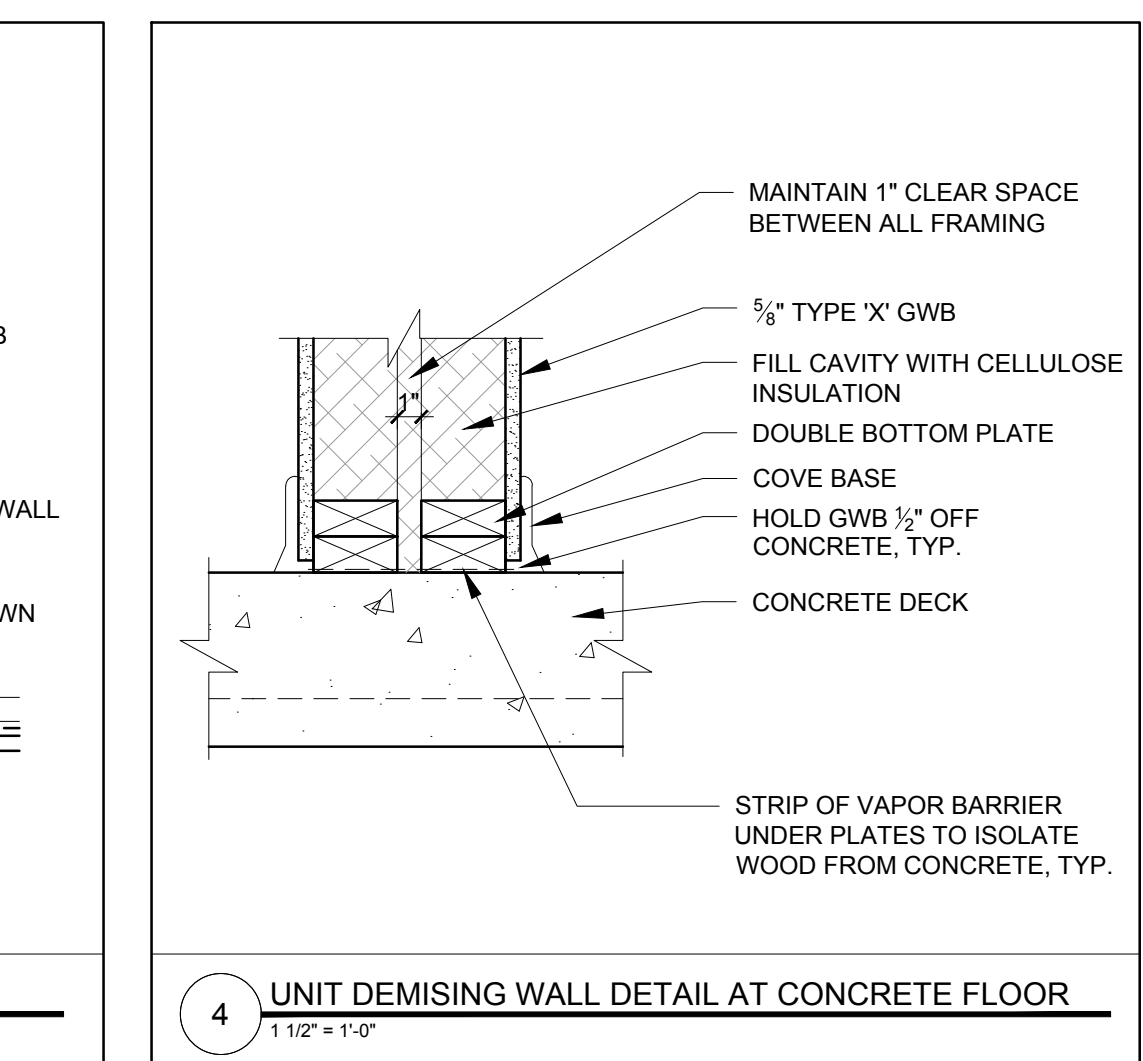
1 UNIT DEMISING WALL DETAIL
1 1/2" = 1'-0"



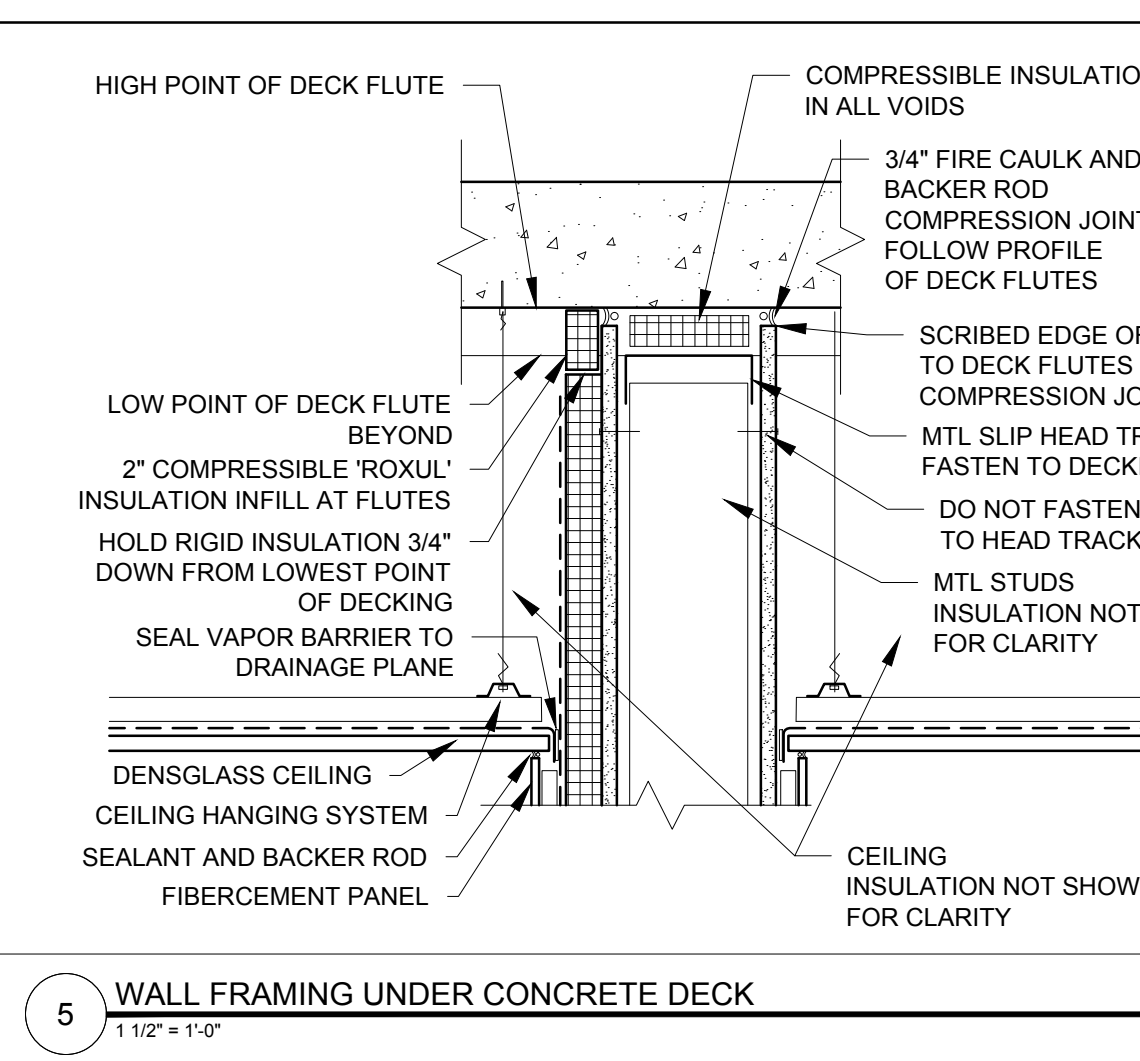
2 CORRIDOR AND UNIT DEMISING WALL DETAIL
1 1/2" = 1'-0"



3 CORRIDOR AND UNIT DEMISING WALL DETAIL AT ROOF
1 1/2" = 1'-0"



4 UNIT DEMISING WALL DETAIL AT CONCRETE FLOOR
1 1/2" = 1'-0"



5 WALL FRAMING UNDER CONCRETE DECK
1 1/2" = 1'-0"