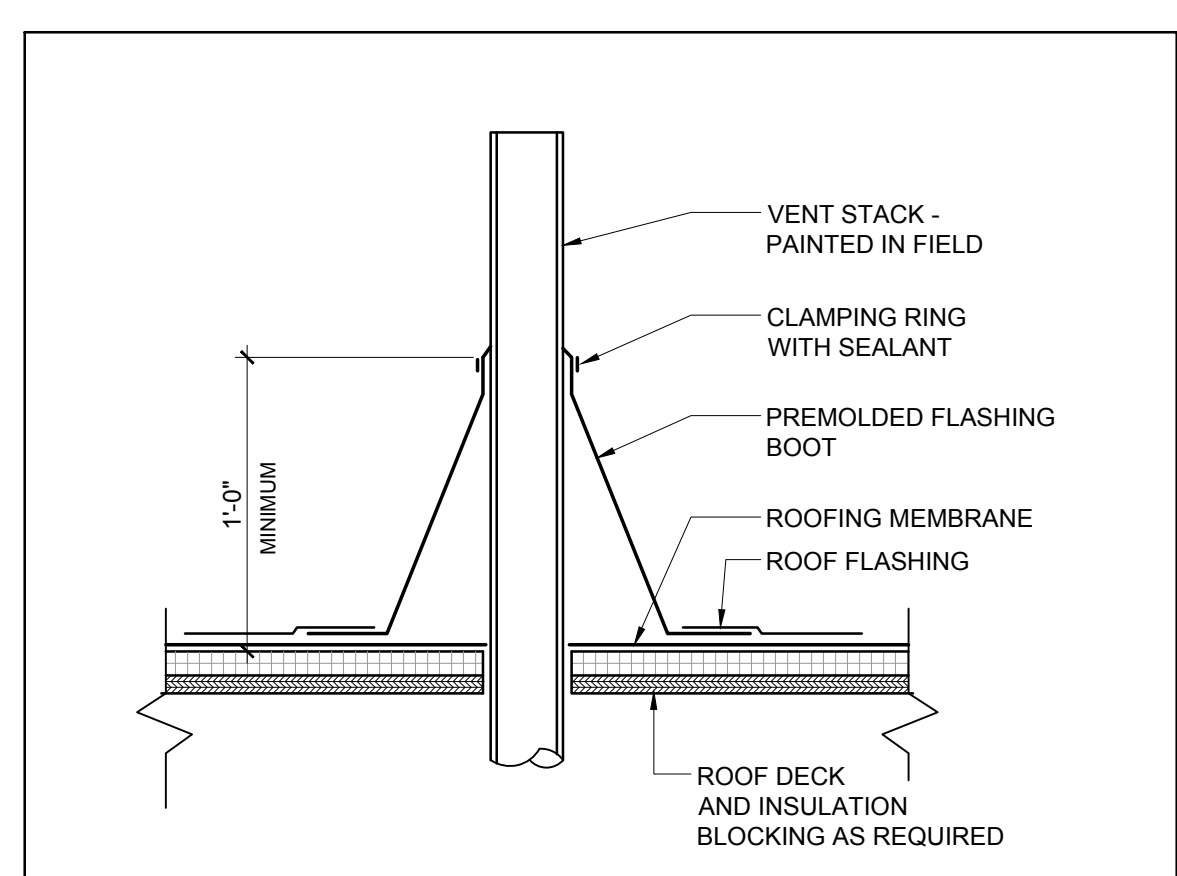
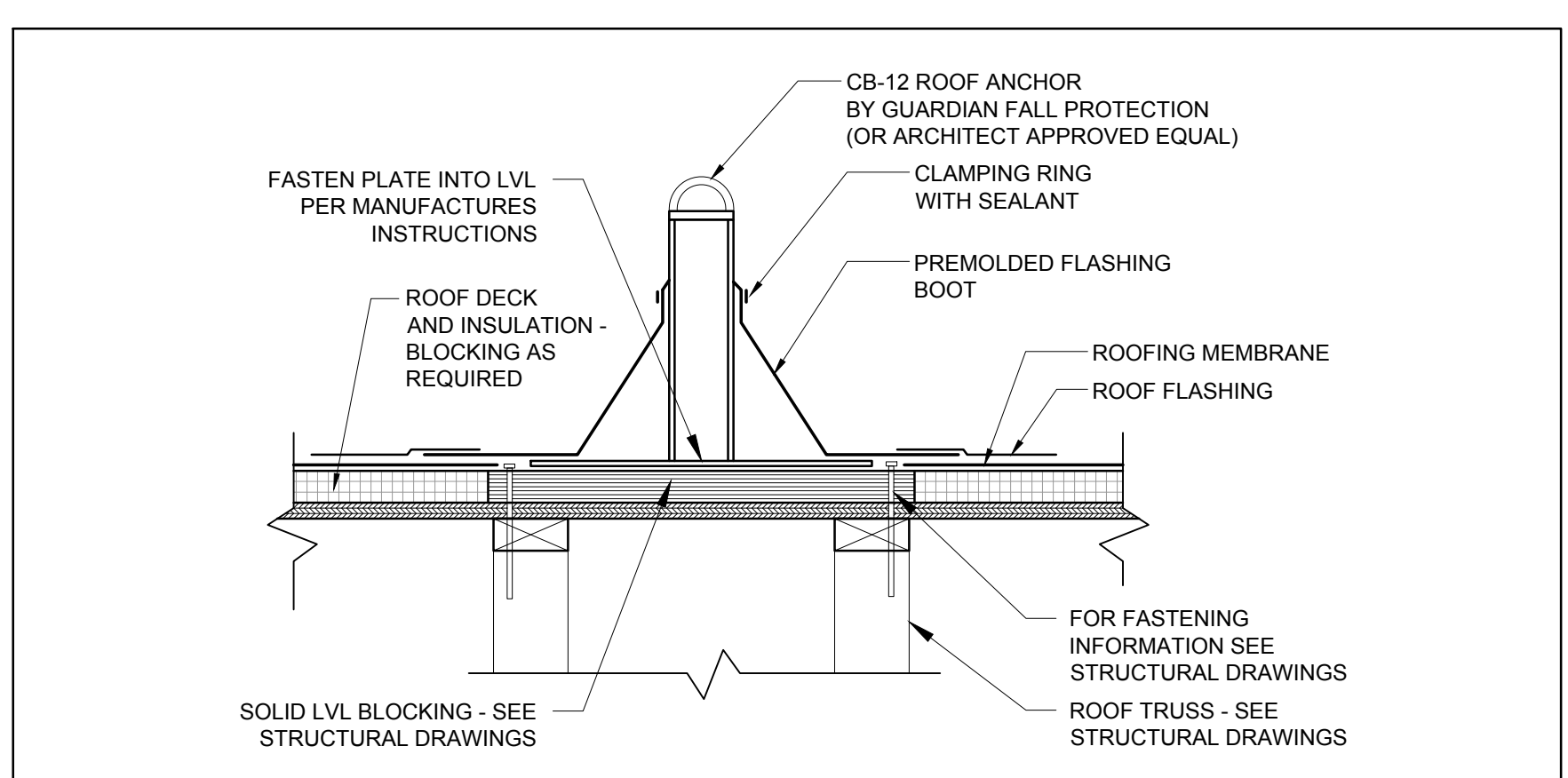


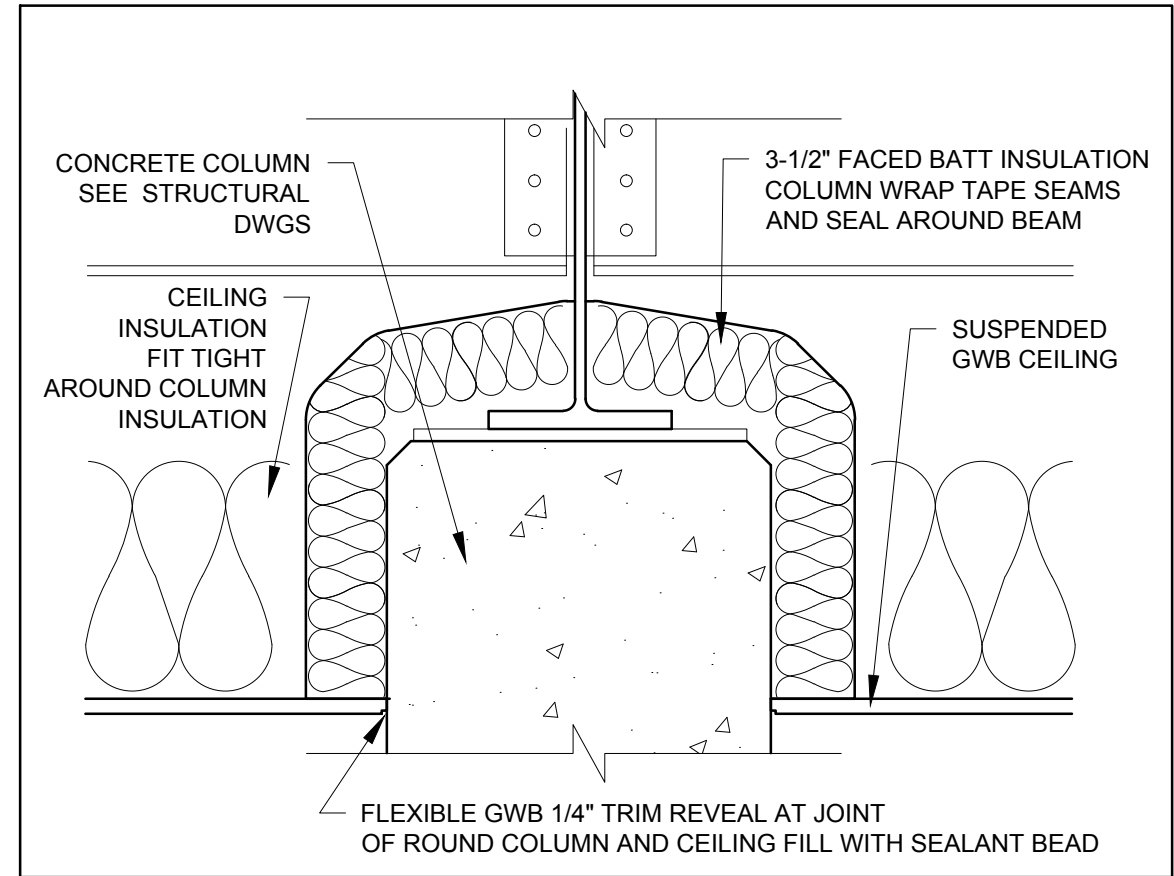
9 ROOF AND SHAFT PENTHOUSE DETAIL  
1 1/2" = 1'-0"



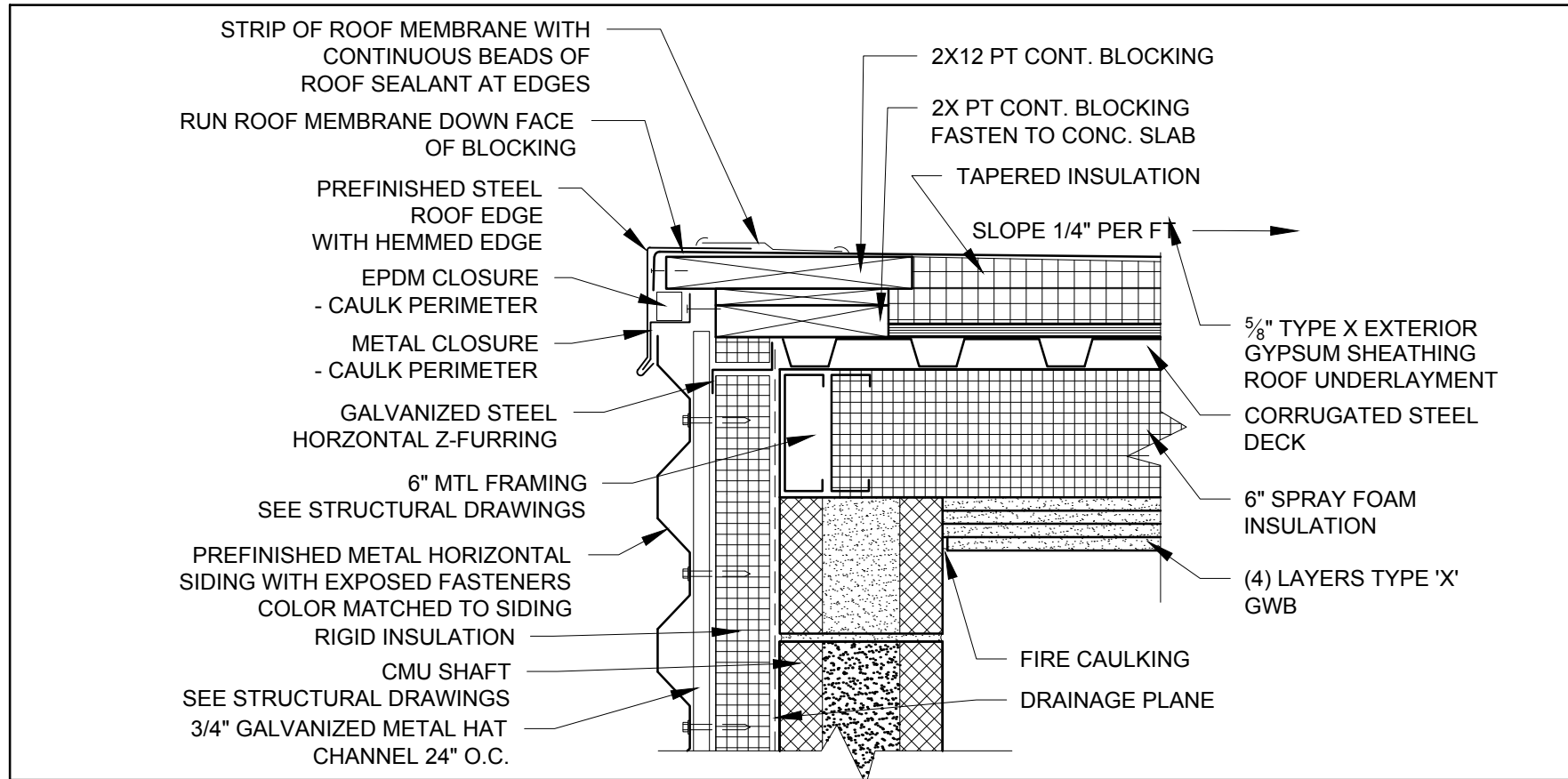
7 TYPICAL PIPE PENETRATION DETAIL AT MEMBRANE ROOF  
1 1/2" = 1'-0"



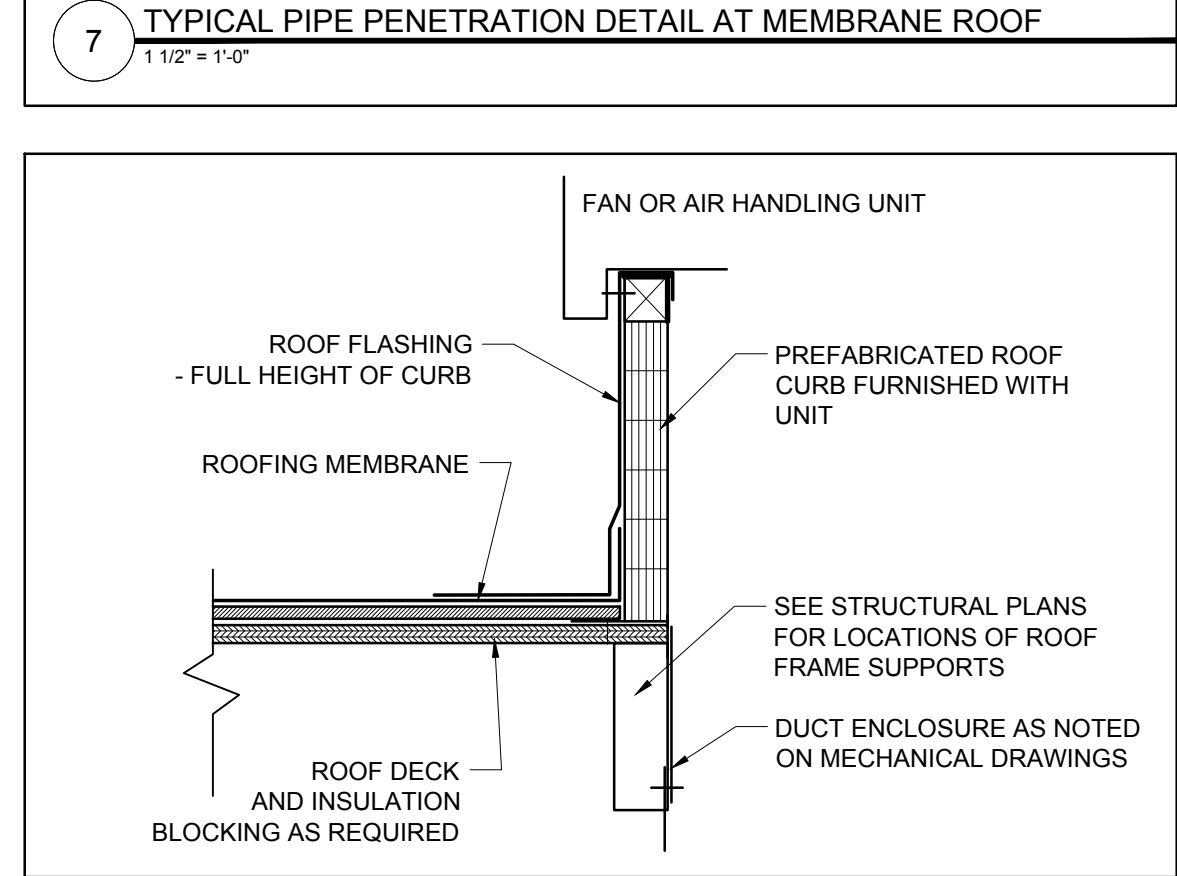
10 TYPICAL SAFETY ANCHOR AT MEMBRANE ROOF  
1 1/2" = 1'-0"



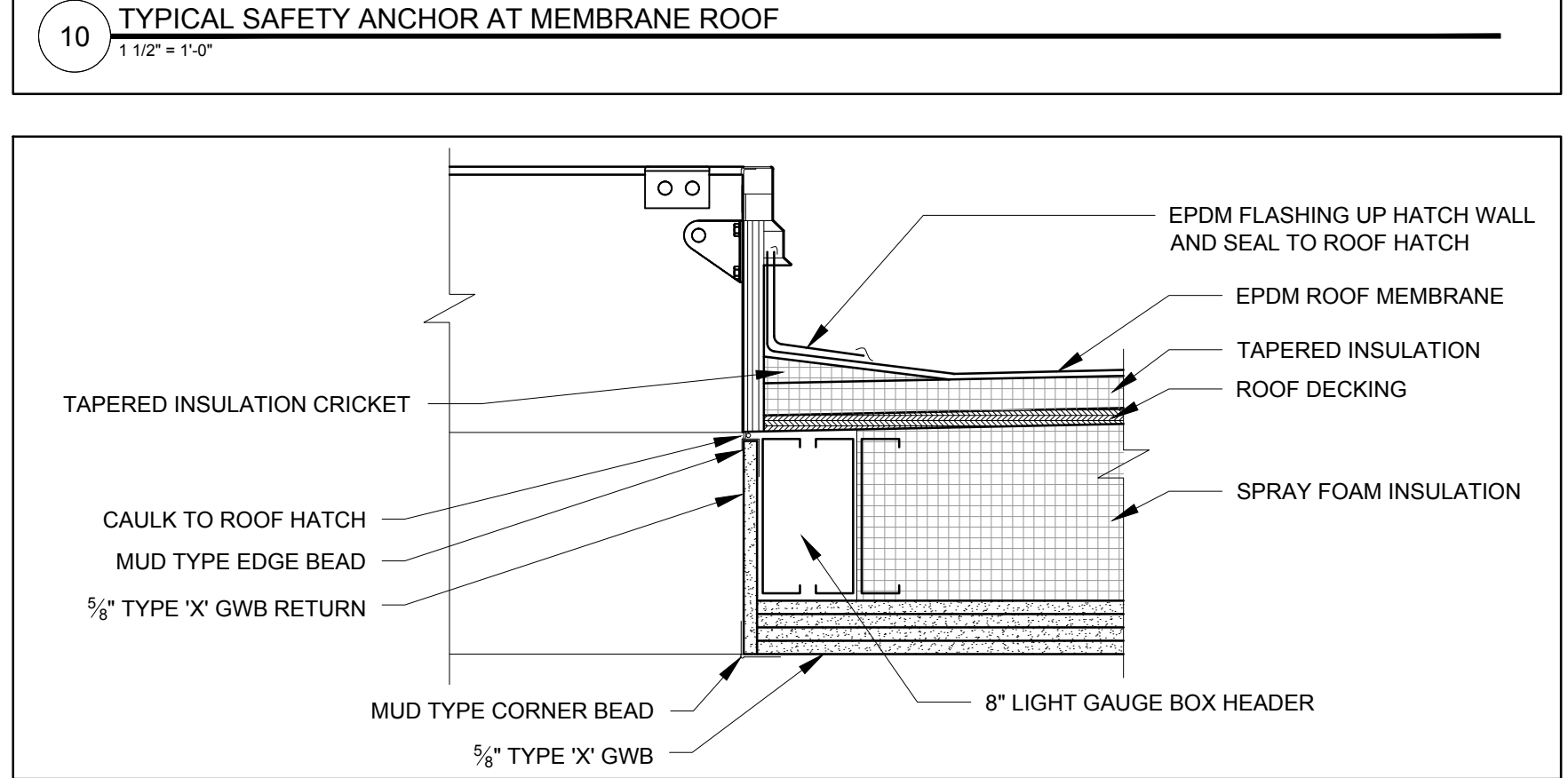
11 TYPICAL CONCRETE COLUMN INSULATION ABOVE PARKING  
1 1/2" = 1'-0"



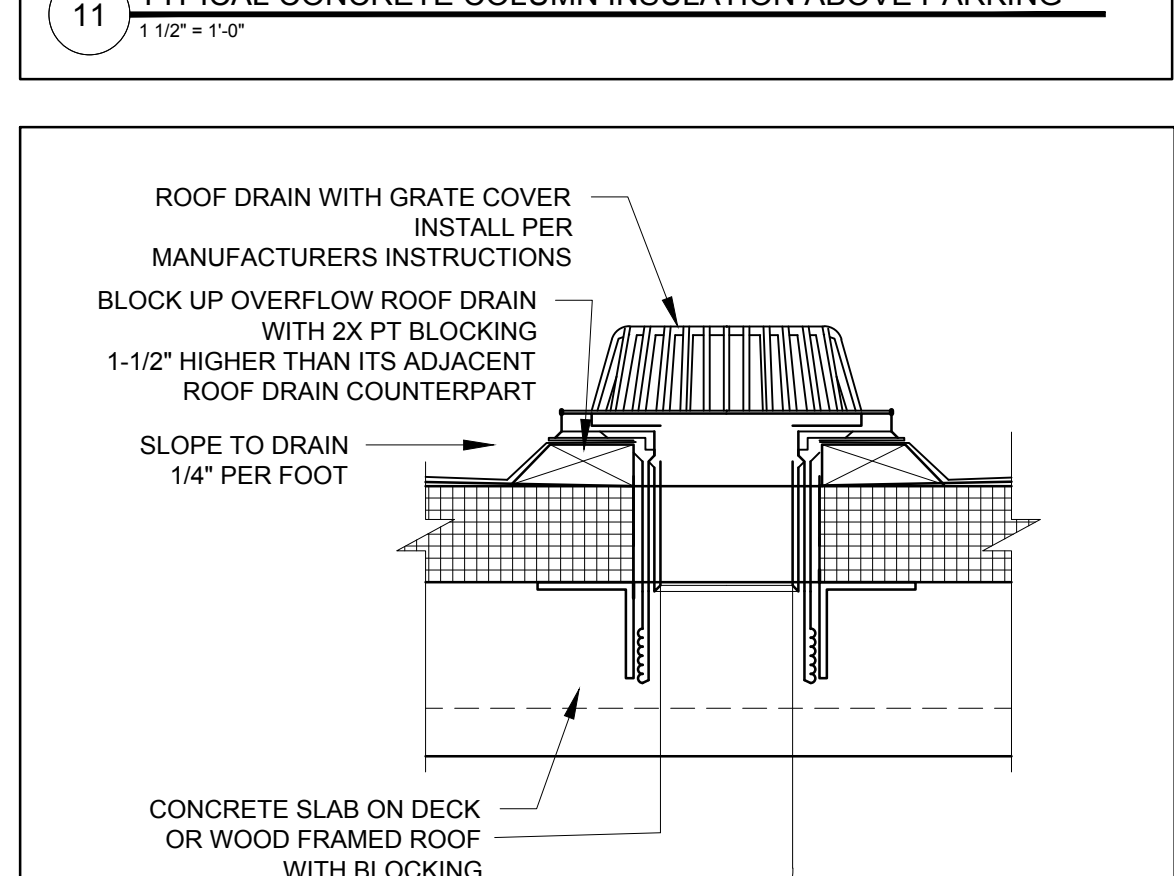
8 SHAFT PENTHOUSE ROOF EDGE DETAIL  
1 1/2" = 1'-0"



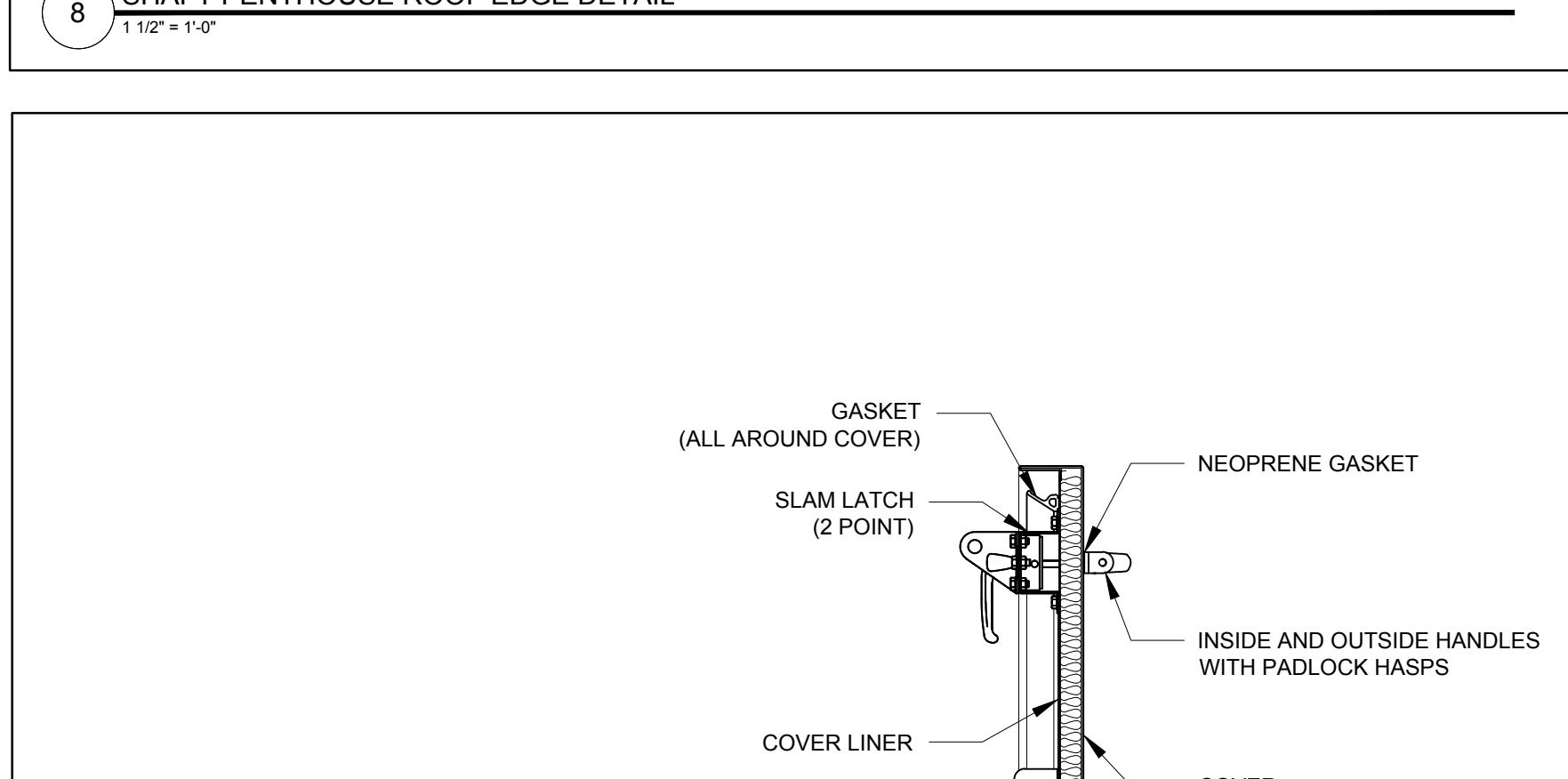
6 TYPICAL ROOF CURB DETAIL AT MECHANICAL UNIT  
1 1/2" = 1'-0"



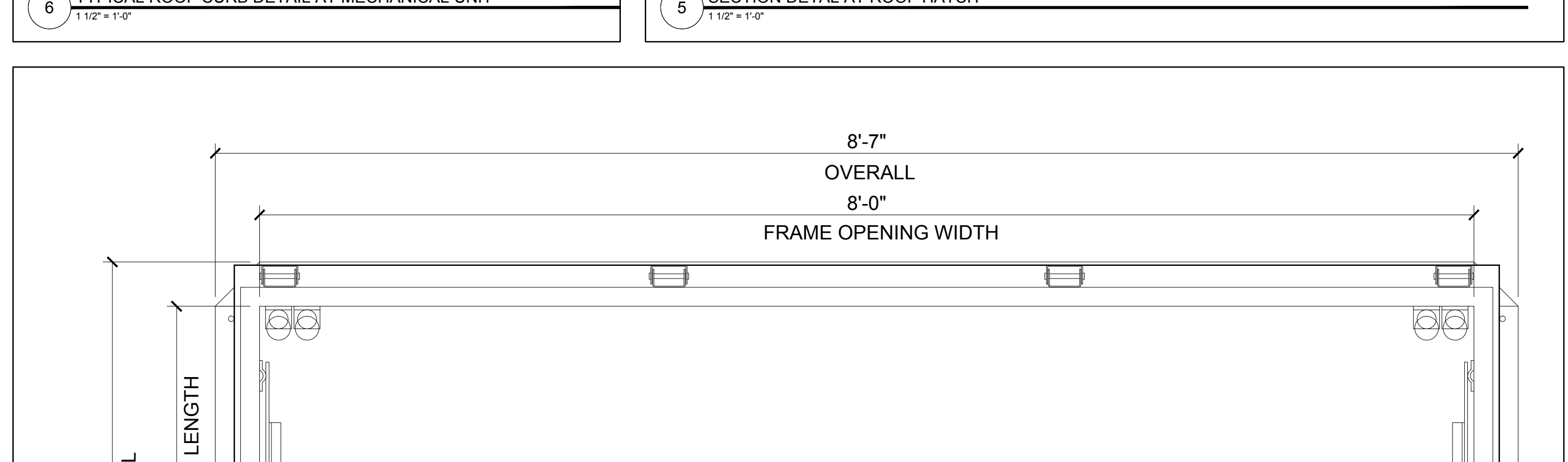
5 SECTION DETAIL AT ROOF HATCH  
1 1/2" = 1'-0"



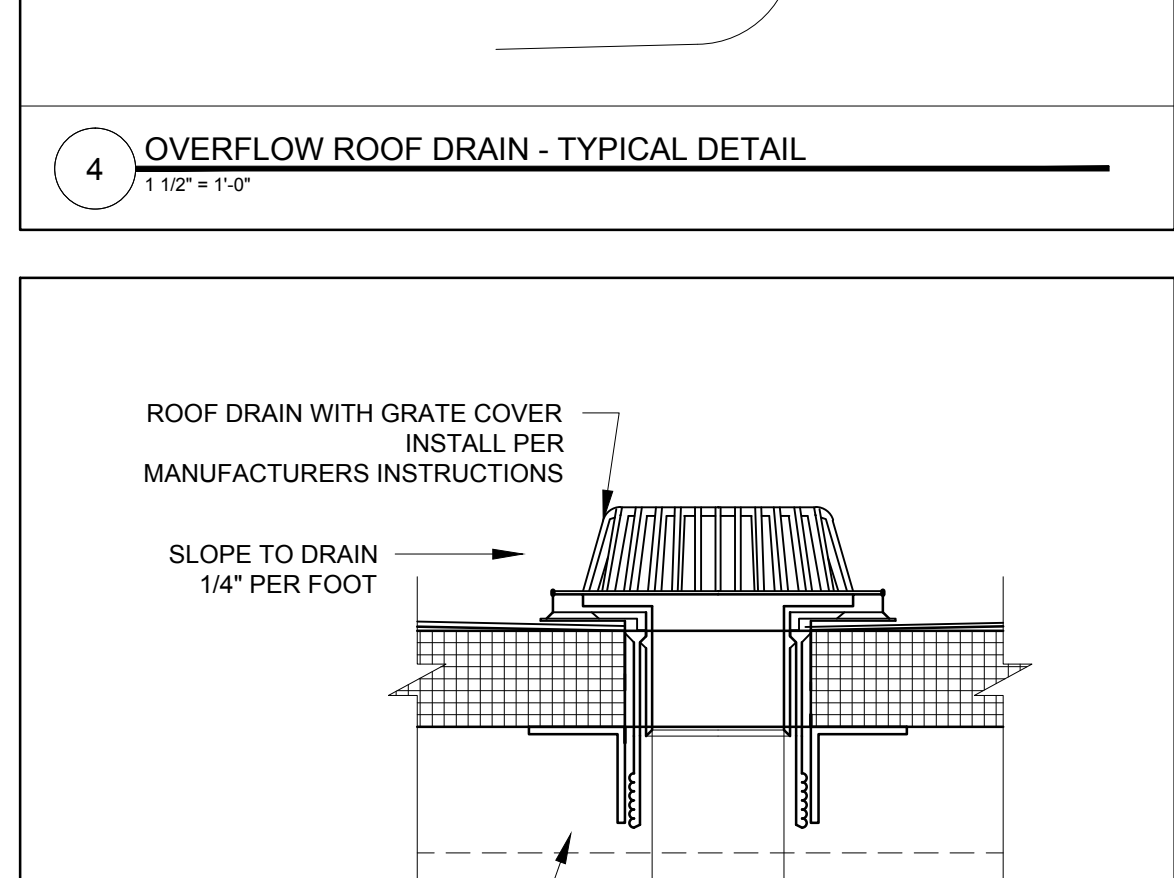
4 OVERFLOW ROOF DRAIN - TYPICAL DETAIL  
1 1/2" = 1'-0"



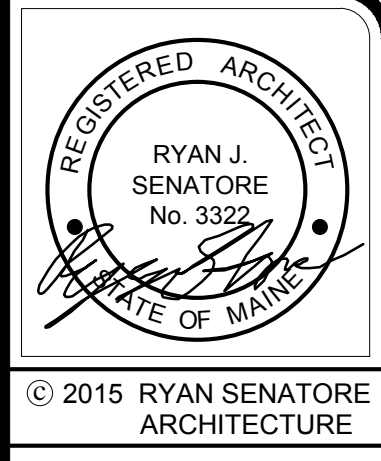
2 SECTION DETAIL - ACCESS DOOR HATCH  
1 1/2" = 1'-0"



1 ACCESS ROOF HATCH  
1 1/2" = 1'-0"



3 ROOF DRAIN - TYPICAL DETAIL  
1 1/2" = 1'-0"



© 2015 RYAN SENATORE ARCHITECTURE

APARTMENTS  
89 ANDERSON STREET  
PORTLAND, MAINE



RYAN SENATORE ARCHITECTURE  
565 CONGRESS STREET  
PORTLAND, MAINE 04101  
207-550-5414  
senatorearchitecture.com

CONSULTANTS:  
STRUCTURAL:  
Structural Integrity  
77 Oak Street  
Portland, ME 04101  
207-774-4614

REVISIONS:

DATE: JULY 3, 2015

PROJECT No. 1415

DRAWN BY: RRT / RJS

CHECKED BY: RJS

SCALE: AS NOTED

SHEET TITLE:  
DETAILS

A5-11