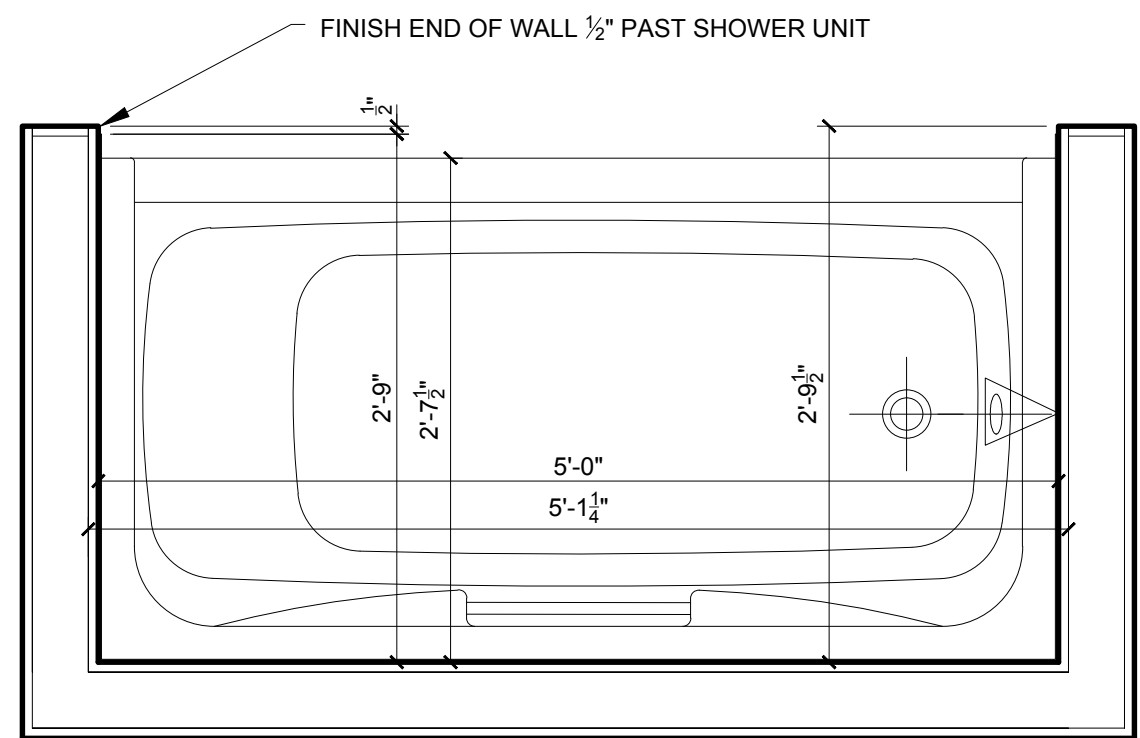


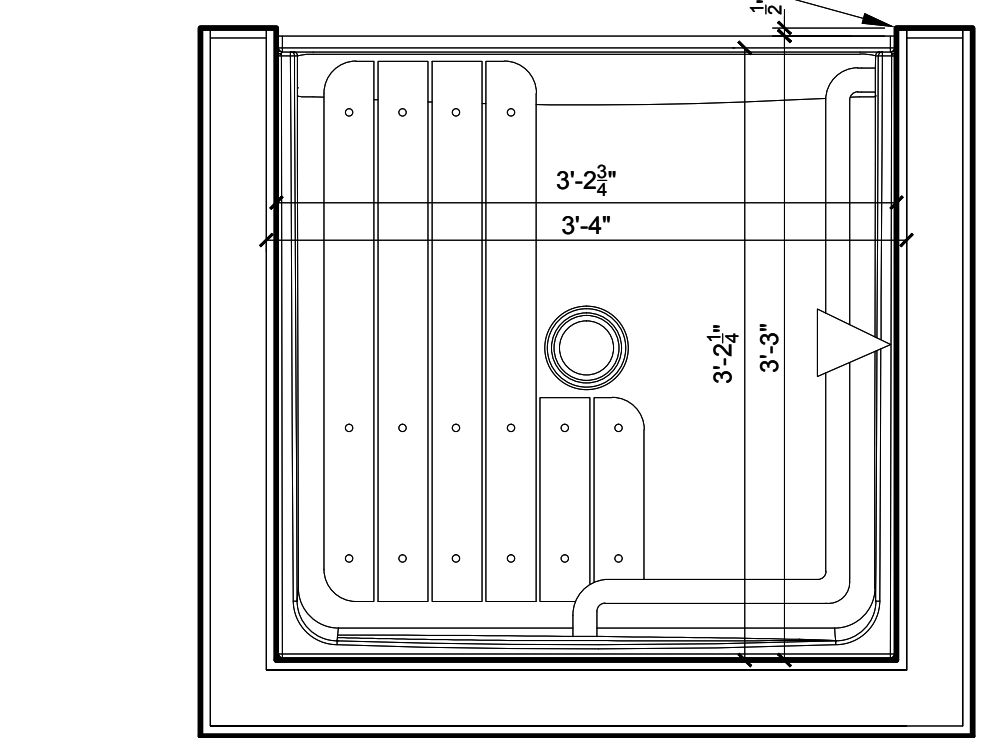
GENERAL CONTRACTOR TO VERIFY AND ADJUST ALL TUB AND SHOWER DIMENSION BASED ON APPROVED SUBMITTALS

AKER TUB UNIT - 141000
CM-60
60" x 31-1/2" x 72"



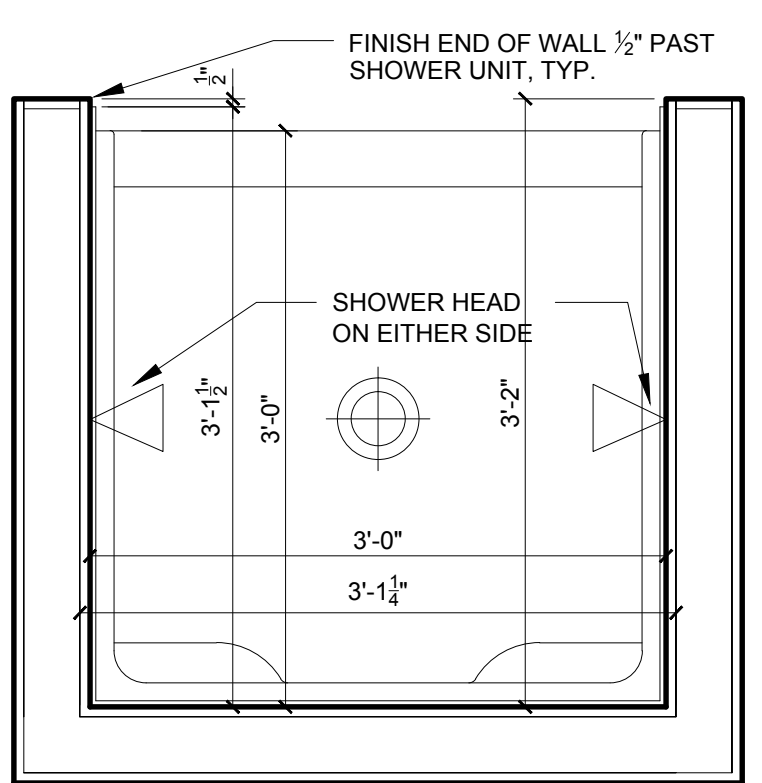
11 60" TYPICAL TUB SHOWER PLAN
1" = 1'-0"

AKER ADA TRANSFER SHOWER UNIT WITH GRAB BARS AND FOLD DOWN SEAT
OPS-3636
38 3/4" x 39" x 78 3/4"



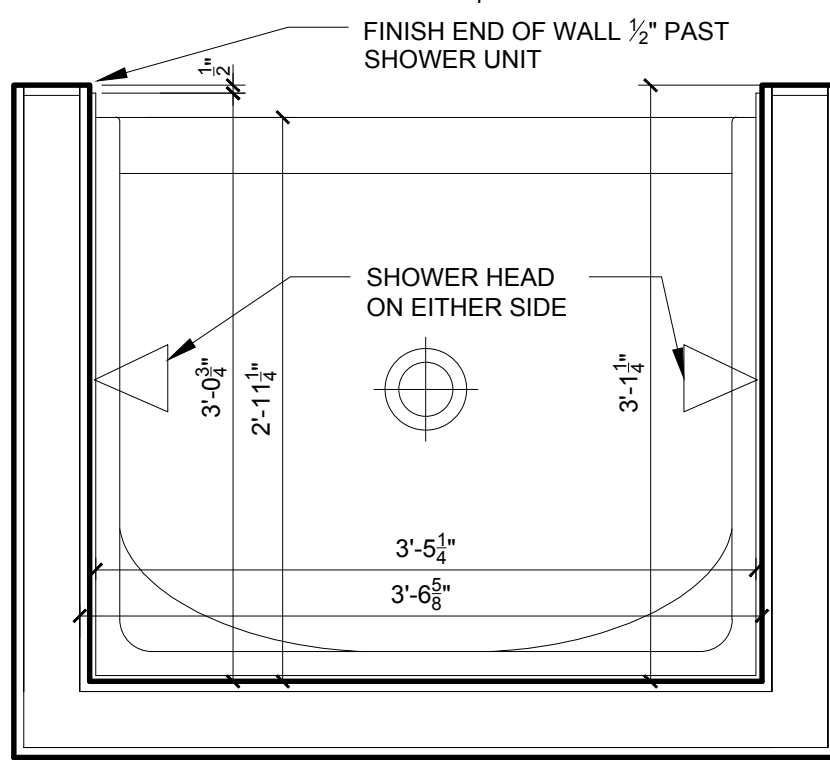
10 TYPICAL ADA TRANSFER SHOWER PLAN
1" = 1'-0"

AKER SHOWER UNIT - 141022
S-36
36" X 36" X 72"



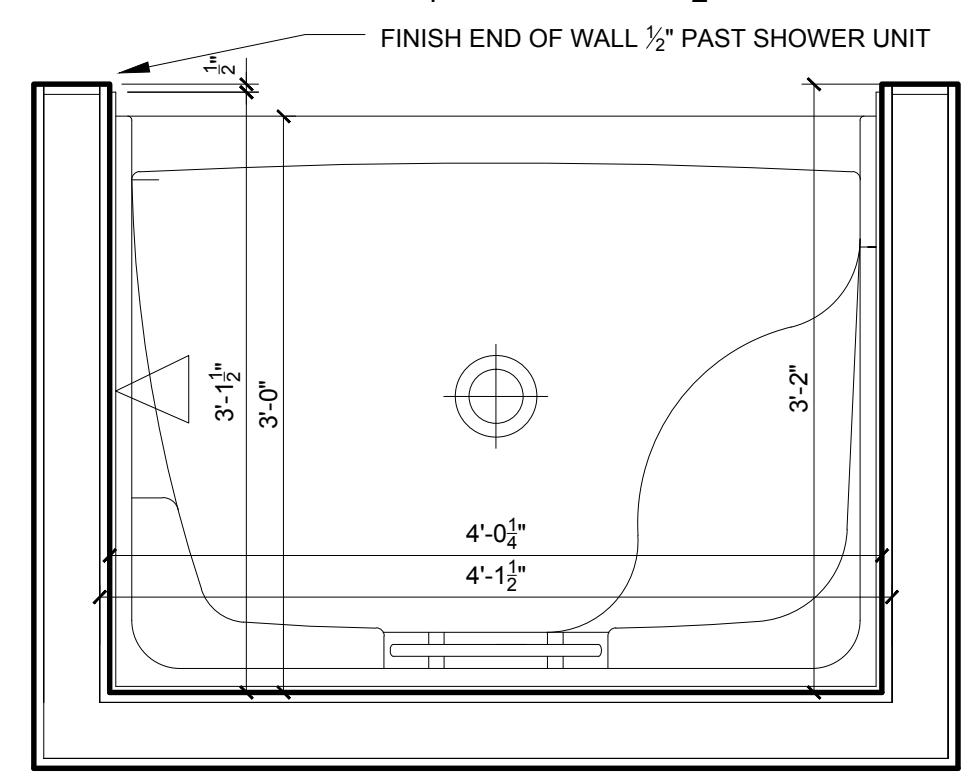
9 36" TYPICAL SHOWER PLAN
1" = 1'-0"

AKER SHOWER UNIT - 141025
S-42
42" X 35 1/4" X 72"

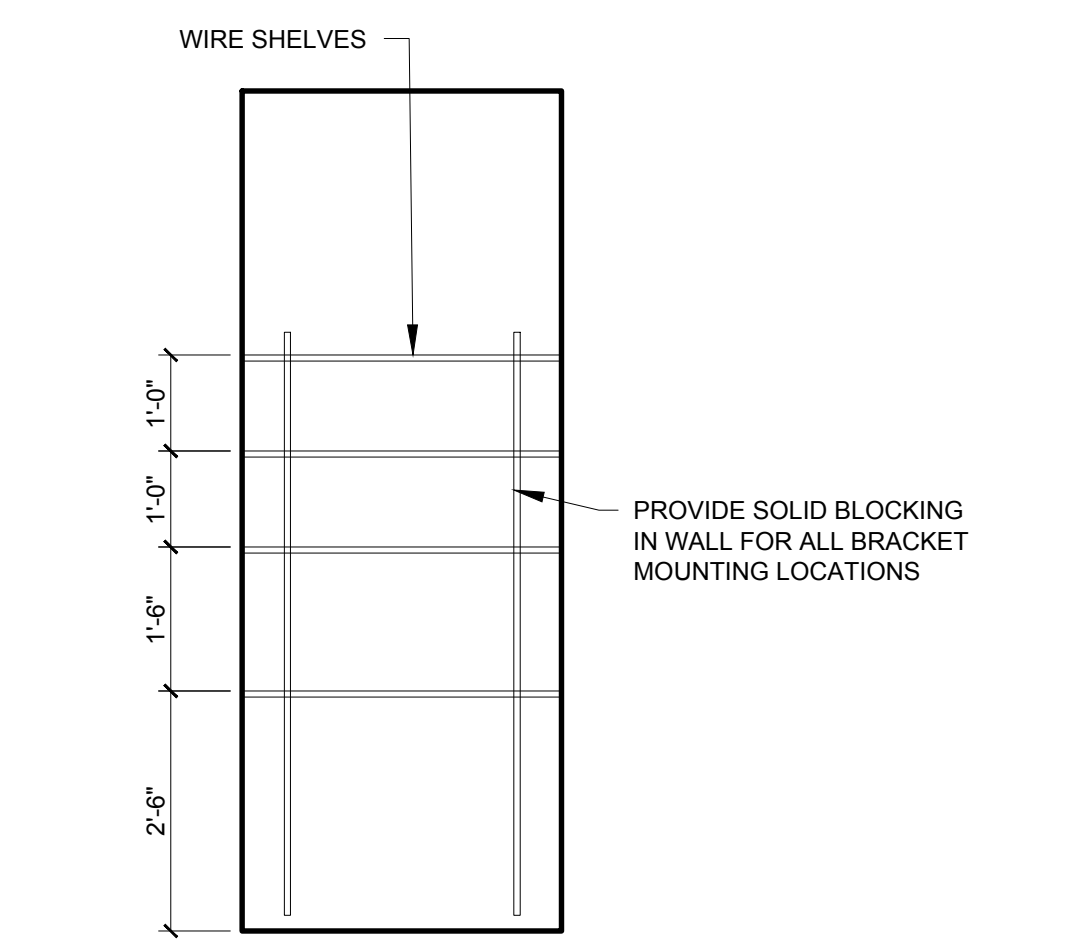


8 42" TYPICAL SHOWER PLAN
1" = 1'-0"

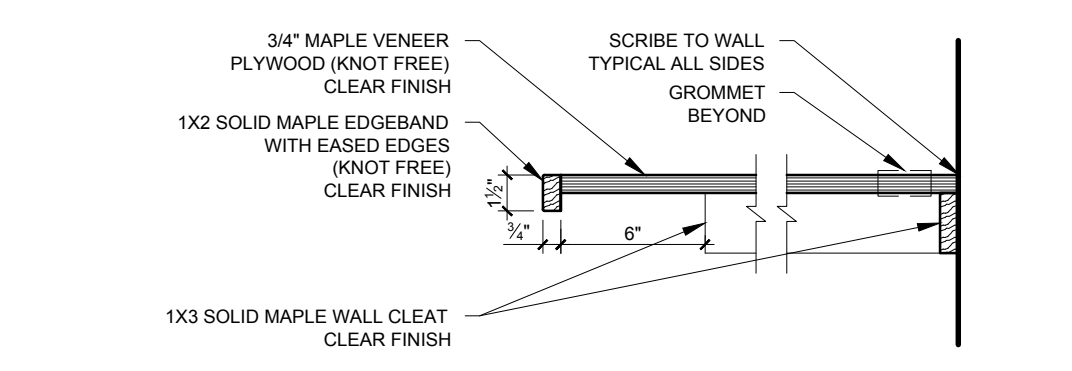
AKER SHOWER UNIT - 141033
SHLS/RS-48
48 1/4" X 36" X 76 1/2"



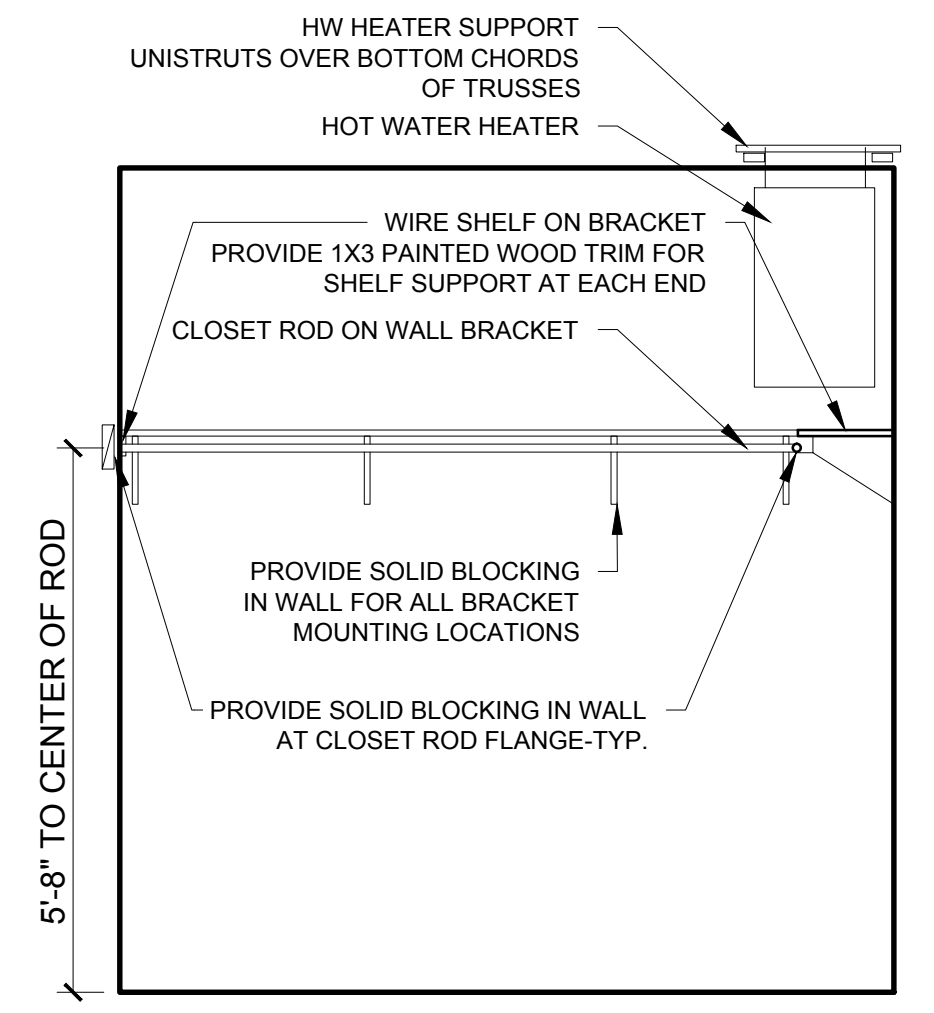
7 48" TYPICAL SHOWER PLAN
1" = 1'-0"



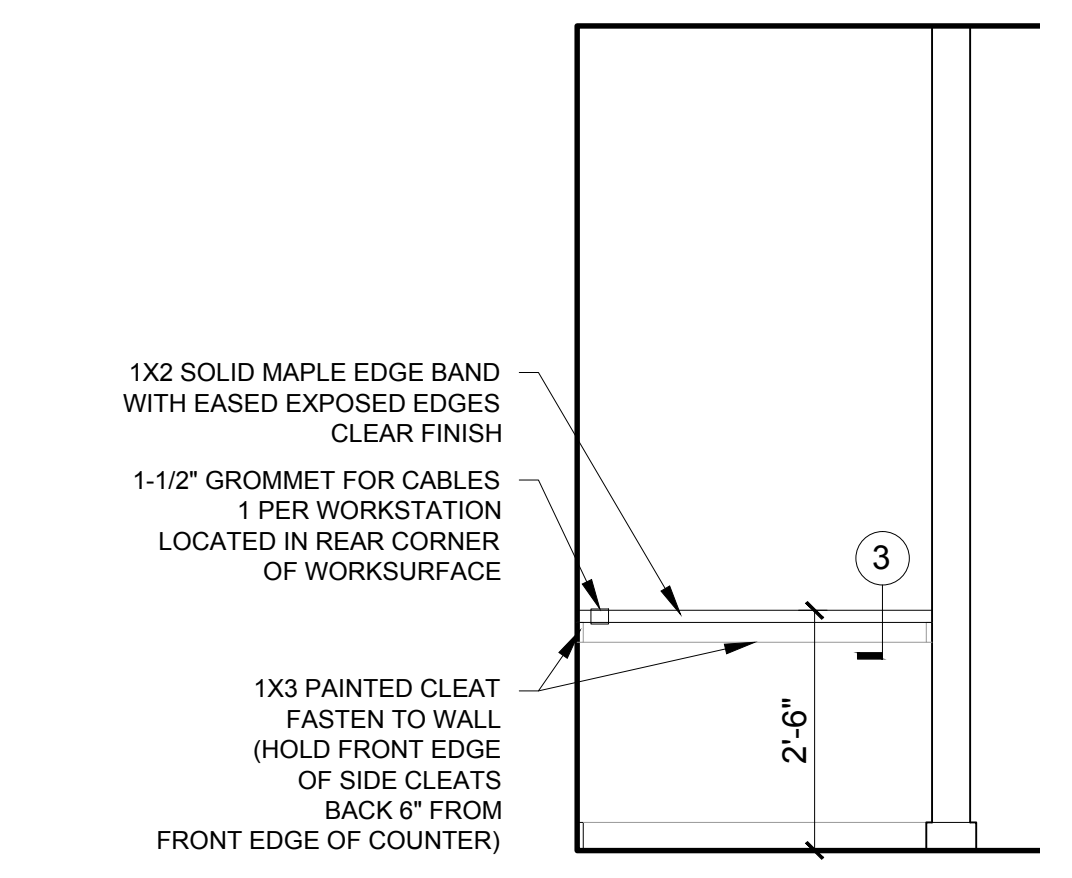
6 TYPICAL LINEN CLOSET DETAIL
1/2" = 1'-0"



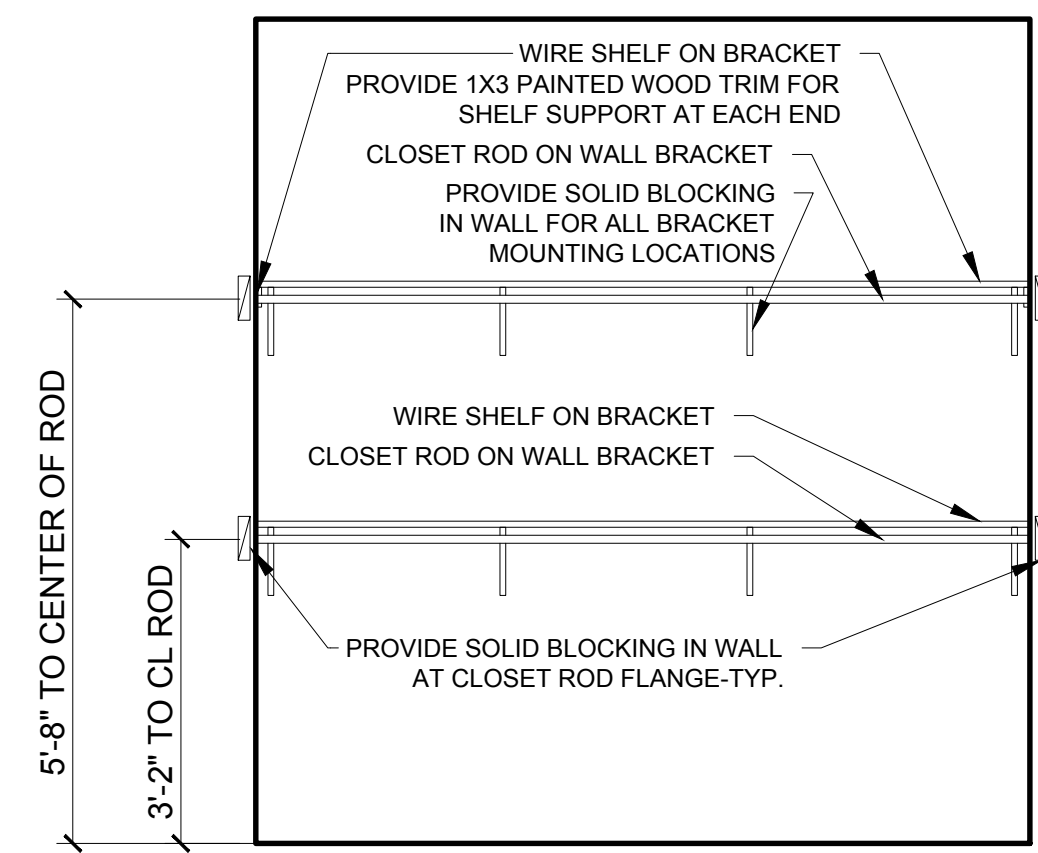
3 TYPICAL WORK SURFACE COUNTER SECTION DETAIL
1-1/2" = 1'-0"



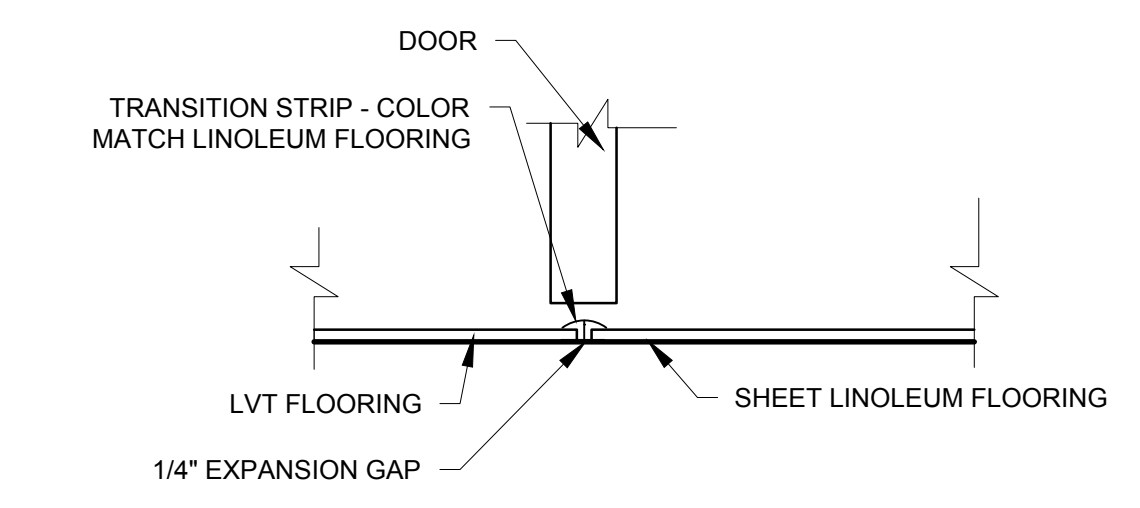
5 TYPICAL CLOSET DETAIL
1/2" = 1'-0"



2 TYPICAL WORK SURFACE COUNTER ELEVATION
1/2" = 1'-0"



4 TYPICAL ADA CLOSET DETAIL
1/2" = 1'-0"



1 FLOORING TRANSITION
3" = 1'-0"



© 2015 RYAN SENATORE ARCHITECTURE

APARTMENTS
89 ANDERSON STREET
PORTLAND, MAINE



RYAN SENATORE ARCHITECTURE
565 CONGRESS STREET
PORTLAND, MAINE 04101
207-650-6414
senatorearchitecture.com

CONSULTANTS:
STRUCTURAL:
Structural Integrity
77 Oak Street
Portland, ME 04101
207-774-4614

REVISIONS:

DATE: JULY 3, 2015

PROJECT No. 1415

DRAWN BY: RRT / RJS

CHECKED BY: RJS

SCALE: AS NOTED

SHEET TITLE:
TYPICAL UNIT DETAILS

A4-3