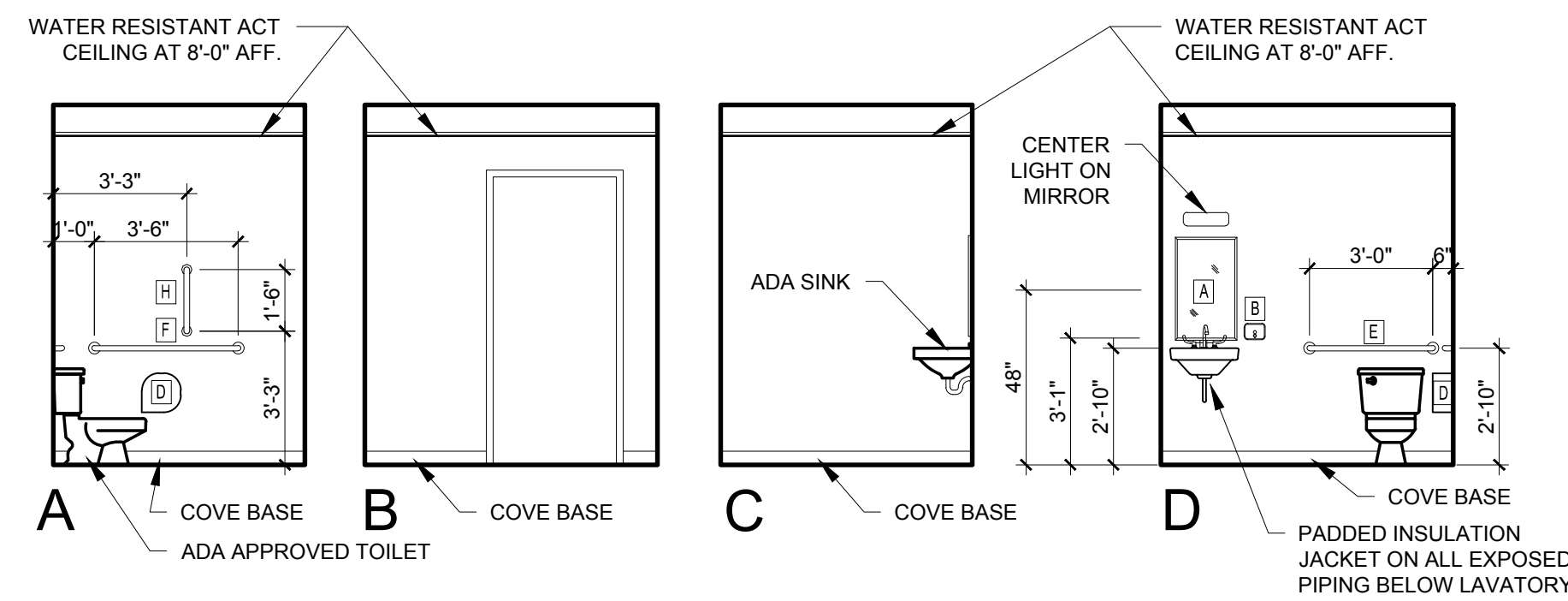
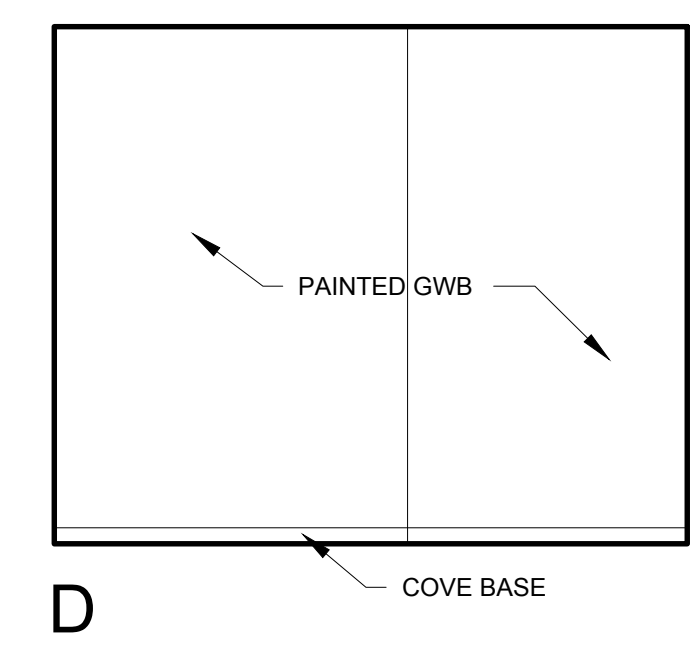
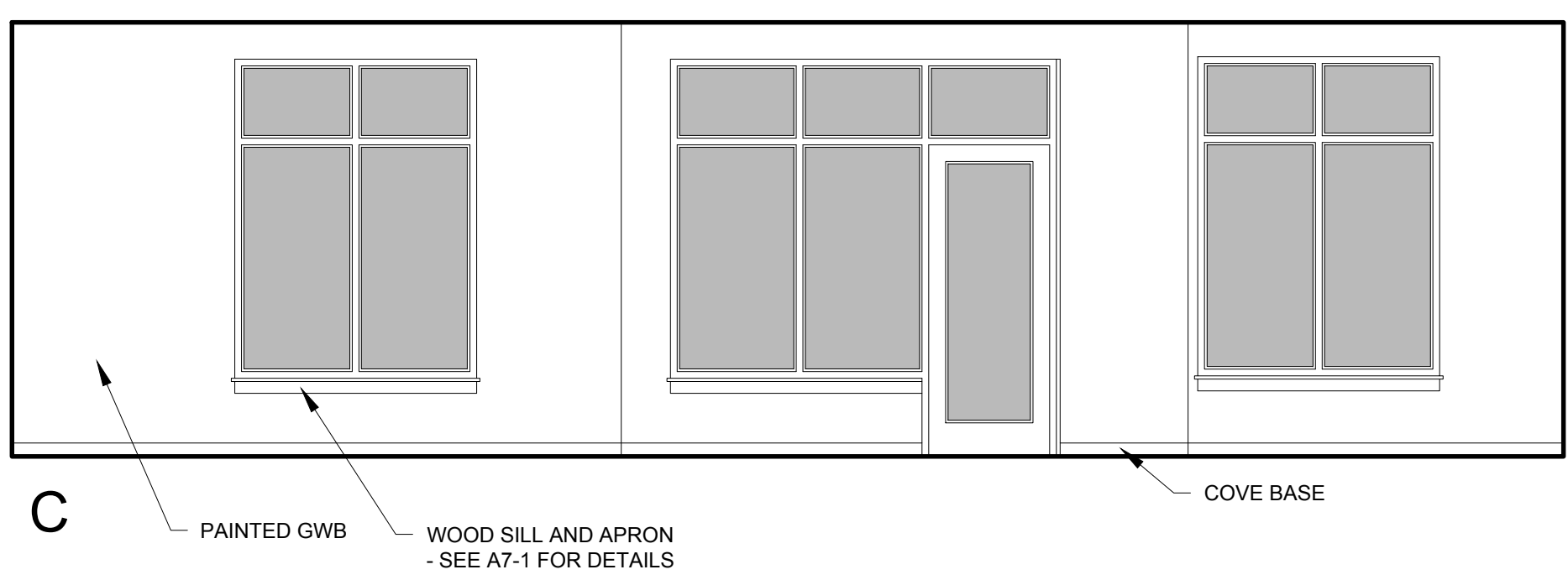
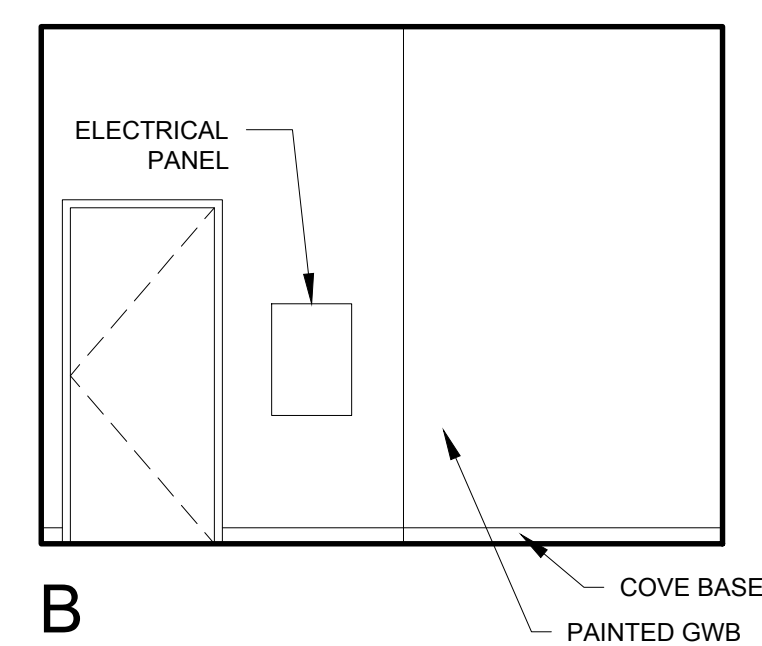
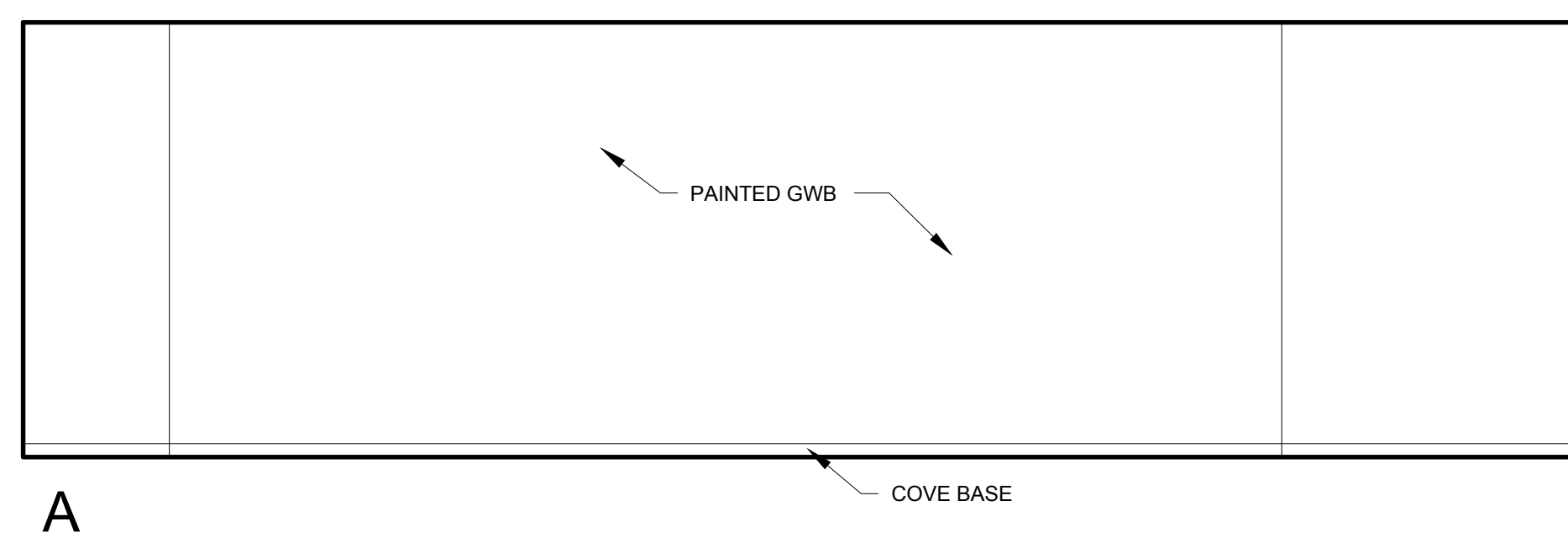


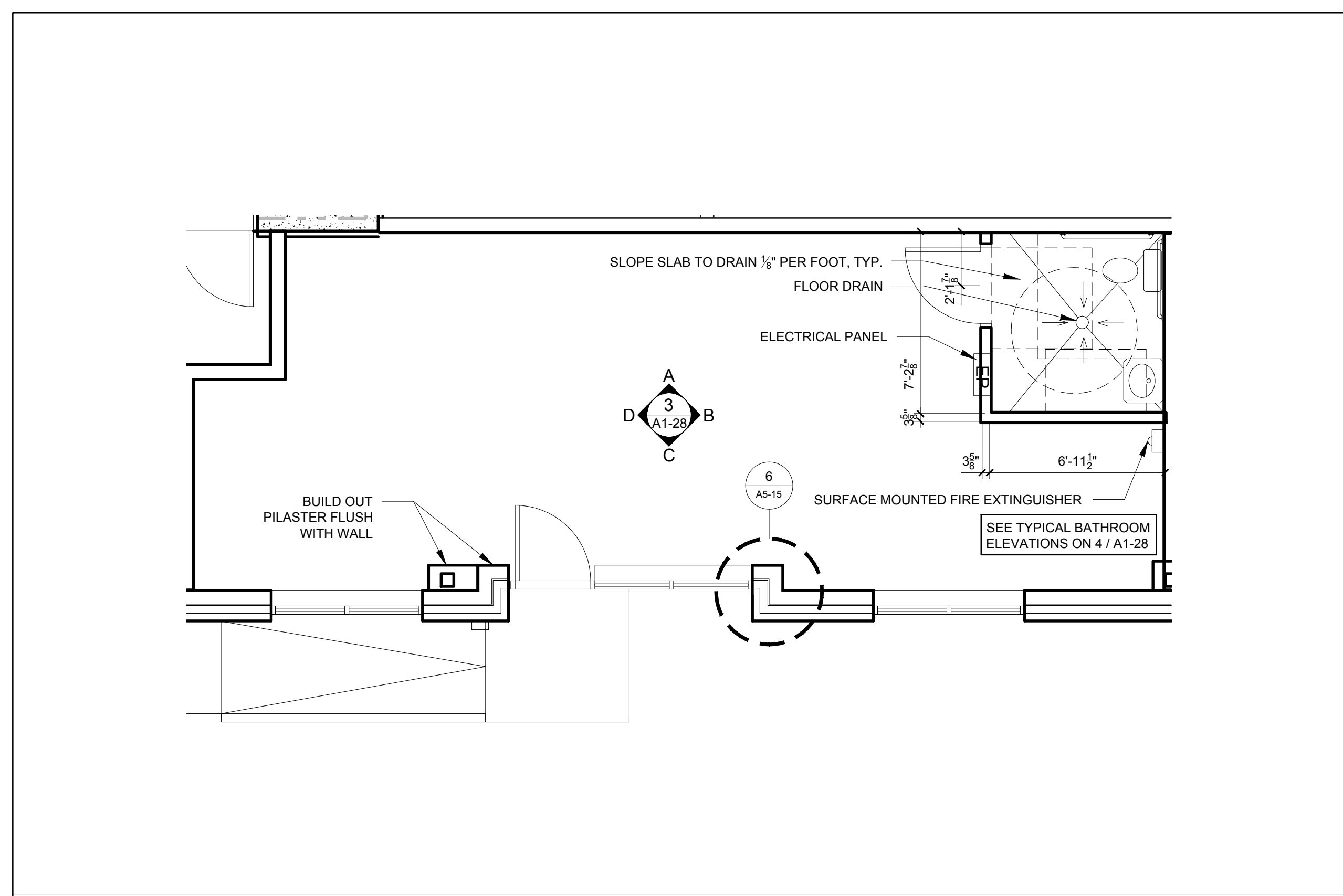
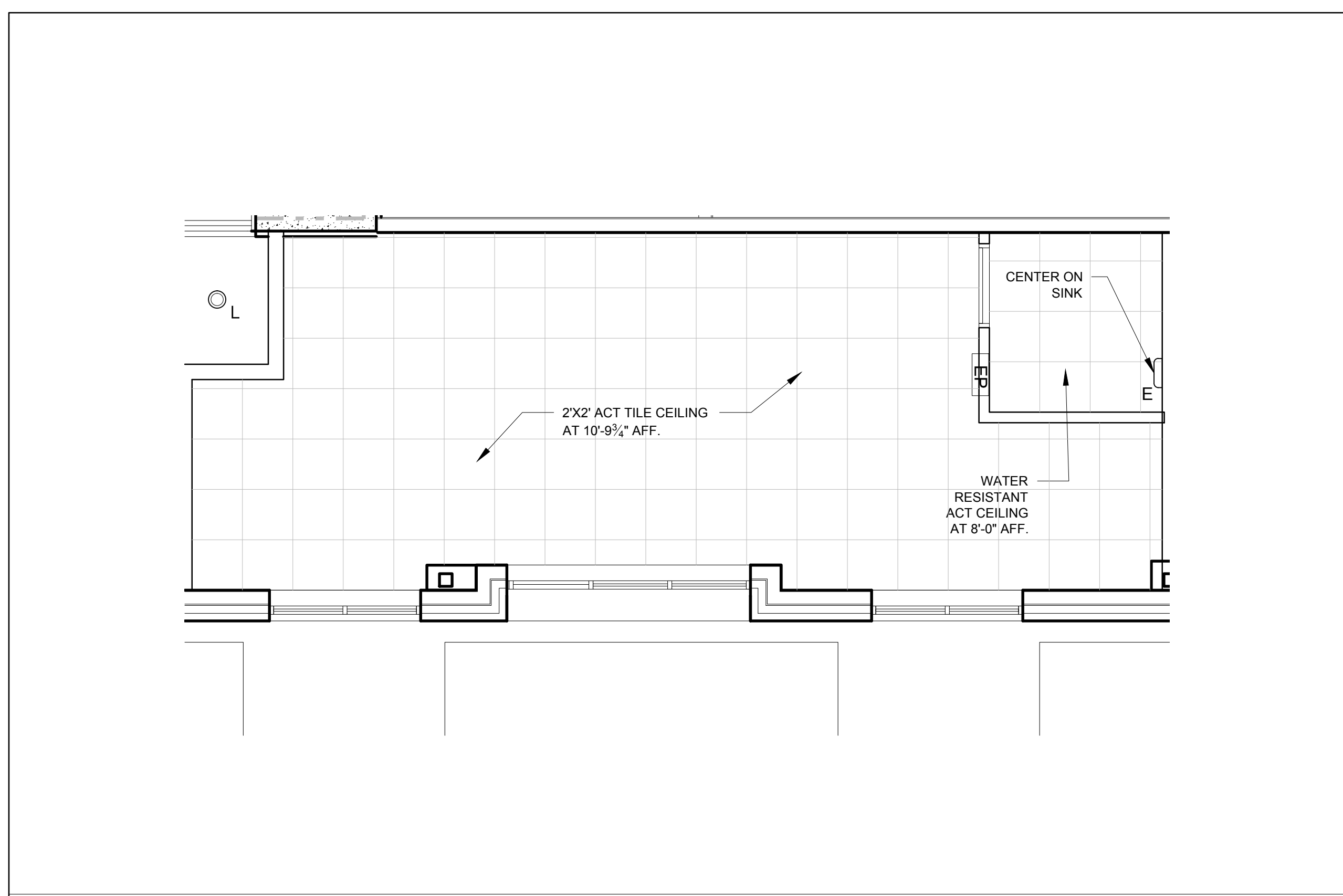
- NOTES**
- WHEN GIVEN A RANGE OF DIMENSIONS FOR PLACEMENT, PLACE ALL FIXTURES OF SAME TYPE AT THE SAME ELEVATION THROUGHOUT, UNLESS OTHERWISE DIRECTED.
 - MIRRORS TO BE CENTERED OVER SINKS
 - PROVIDE APPROPRIATE BLOCKING IN WALLS BEHIND ALL FIXTURES, PARTITIONS, AND ACCESSORIES.
- TOILET ACCESSORIES KEY**
- A MIRROR 18" x 36" NOM.
 - B SOAP DISPENSER - PBOBC
 - C NOT USED
 - D TOILET PAPER DISPENSER
 - E GRAB BAR 36" (1 1/4" TO 1 1/2" O.D.)
 - F GRAB BAR 42" (1 1/4" TO 1 1/2" O.D.)
 - G NOT USED
 - H GRAB BAR 18" (1 1/4" TO 1 1/2" O.D.)



- REFLECTED CEILING PLAN NOTES**
- G.C. TO COORDINATE LOCATIONS OF PLUMBING CLEAN OUTS WITH ACCESS PANELS AS SHOWN ON REFLECTED CEILING PLANS
 - G.C. TO PROVIDE ACCESS PANELS AS REQUIRED FOR ALL ELEMENTS (SPRINKLER, VALVES, ETC) NOT SHOWN ON THIS REFLECTED CEILING PLAN
 - G.C. TO PROVIDE METAL FRAMING AND BLOCKING REQUIRED FOR ALL ACCESS PANELS AND CONTROL JOINTS



3 COMMERCIAL SPACE #2 INTERIOR ELEVATIONS
1/4" = 1'-0"



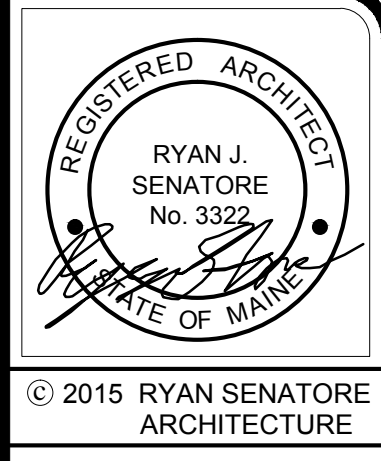
- UNIT NOTES**
- CEILING HEIGHTS, WINDOW HEAD AND SILL HEIGHTS VARY FROM FLOOR TO FLOOR. INTERIOR ELEVATIONS GRAPHICALLY DEPICT ONE FLOOR ONLY. FOR HEIGHT INFORMATION REFER TO BUILDING SECTIONS AND WALL SECTIONS
 - G.C. TO CONFIRM AND COORDINATE ALL ROUGH FRAMING DIMENSIONS FOR TUBS, SHOWERS, BUILT-IN FIXTURES ETC. G.C. TO CONFIRM AND COORDINATE ALL CABINETRY AND APPLIANCES DIMENSIONS
 - PROVIDE APPROPRIATE BLOCKING IN WALLS BEHIND ALL FIXTURES, PARTITIONS AND ACCESSORIES. BLOCKING FOR GRAB BARS TO BE PROVIDED IN WALLS OF BATHROOMS IN ALL UNITS
 - PROVIDE MOISTURE RESISTANT GWB AT ALL WALLS AND CEILINGS IN BATHROOMS TYPICAL
 - SET ALL CLOTHES WASHERS IN PANS WITH WATER SENSOR
 - REFER TO ELECTRICAL AND MECHANICAL DRAWINGS FOR ADDITIONAL INFORMATION REGARDING LIGHTING, DIFFUSERS, ETC.
 - PROVIDE FIRE EXTINGUISHER ON BRACKET IN BASE CABINET BELOW KITCHEN SINK - TYPICAL
 - HANG HOT WATER HEATER FROM CEILING ABOVE CLOTHES ROD IN CLOSET. PROVIDE UNISTRUT SUPPORTS ON TOP OF BOTTOM CHORDS OF TRUSSES PRIOR TO CEILING INSTALLATION
 - WHERE DROPPED SOFFITS AND CEILINGS ARE SHOWN, THESE ARE IN ADDITION TO THE FIRE RATED GWB CEILING ABOVE WHICH IS PART OF THE RATED ASSEMBLY
 - WHERE PLUMBING VALVES (TUB, SHOWER, ETC) ARE LOCATED IN FIRE RATED WALLS, PROVIDE FIRE RATED BOX IN WALL FOR VALVE TO BE INSTALLED WITHIN

CABINETRY AND APPLIANCE ABBREVIATIONS

DB	= DRAWER BASE
DRB	= DOOR BASE
SB	= SINK BASE
WC	= WALL CABINET
WC(24)	= WALL CABINET 24" DEEP
PU	= PANTRY UNIT 24" DEEP
OS	= OPEN SHELVES
RA	= RANGE
DW	= DISHWASHER
REF	= REFRIGERATOR

REFLECTED CEILING PLAN AND LIGHTING LEGEND

SYMBOL	TAG	DESCRIPTION
○	A	TROSS IKEA SURFACE MOUNT
○	B	SURFACE MOUNTED - TBD
○	C	SURFACE MOUNT - IN CLOSETS
○	D	SURFACE MOUNTED ON WALL ABOVE DOOR
○	E	WALL SCONCE IN BATHROOM OVER VANITY
○	F	SURFACE MOUNT - WET LOCATION
○	H	SURFACE MOUNT CENTER IN BEDROOMS
○	J	RECESSED DOWN LIGHT - WET LOCATION
○	K	EXTERIOR CUT OFF DOWN LIGHT
○	L	RECESSED CAN LIGHT FIXTURE
■		CEILING GRILLE



© 2015 RYAN SENATORE ARCHITECTURE

APARTMENTS
89 ANDERSON STREET
PORTLAND, MAINE



RYAN SENATORE ARCHITECTURE
565 CONGRESS STREET
PORTLAND, MAINE 04101
207-650-6414
senatorearchitecture.com

CONSULTANTS:
STRUCTURAL:
Structural Integrity
77 Oak Street
Portland, ME 04101
207-774-4614

REVISIONS:

DATE: JULY 3, 2015
PROJECT No. 1415
DRAWN BY: RRT / RJS
CHECKED BY: RJS
SCALE: AS NOTED

SHEET TITLE:
COMMERCIAL SPACE #2 (108)
PLANS AND INTERIOR ELEVATIONS

A1-28