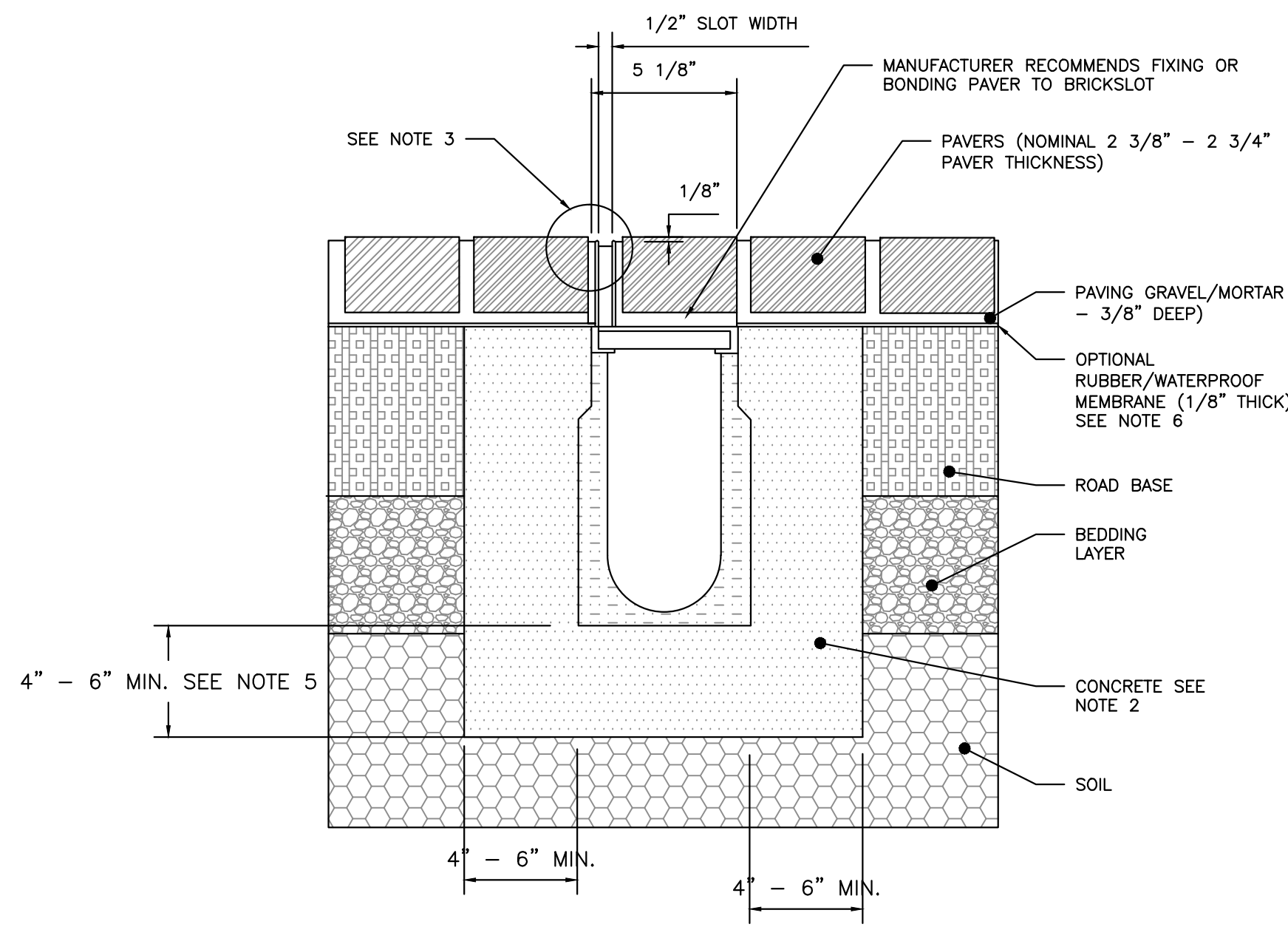
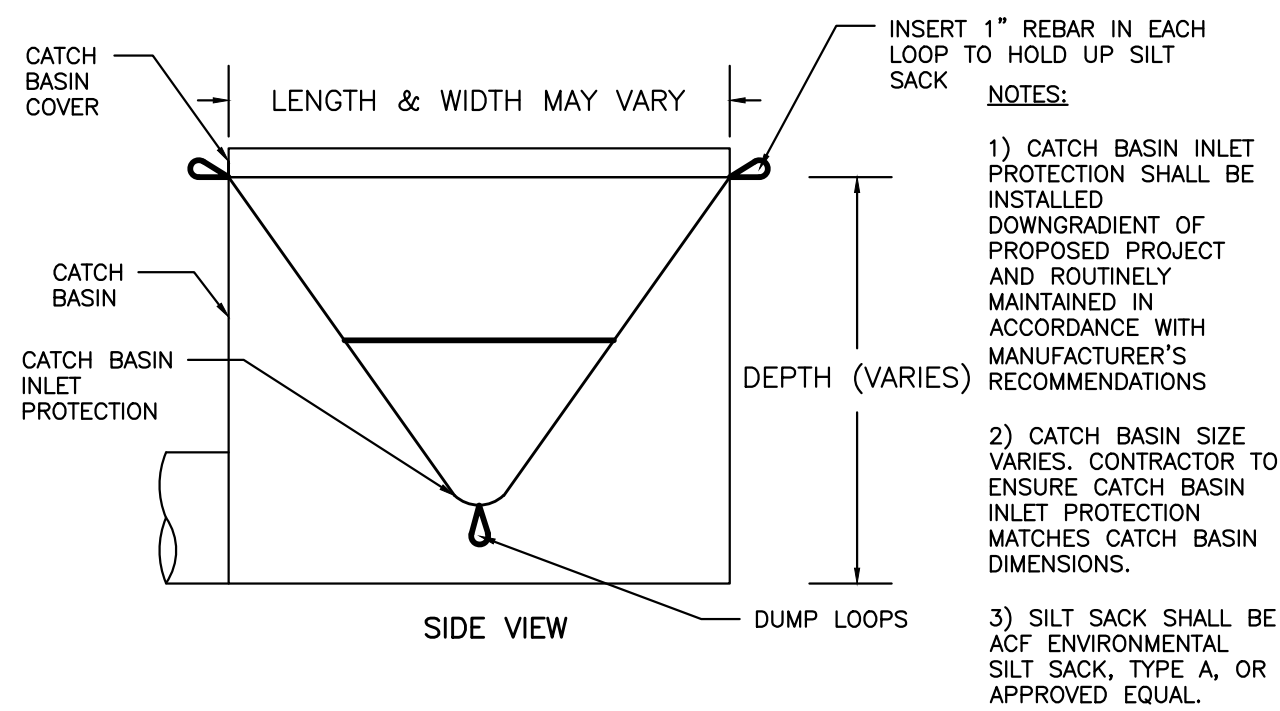


NOTES:

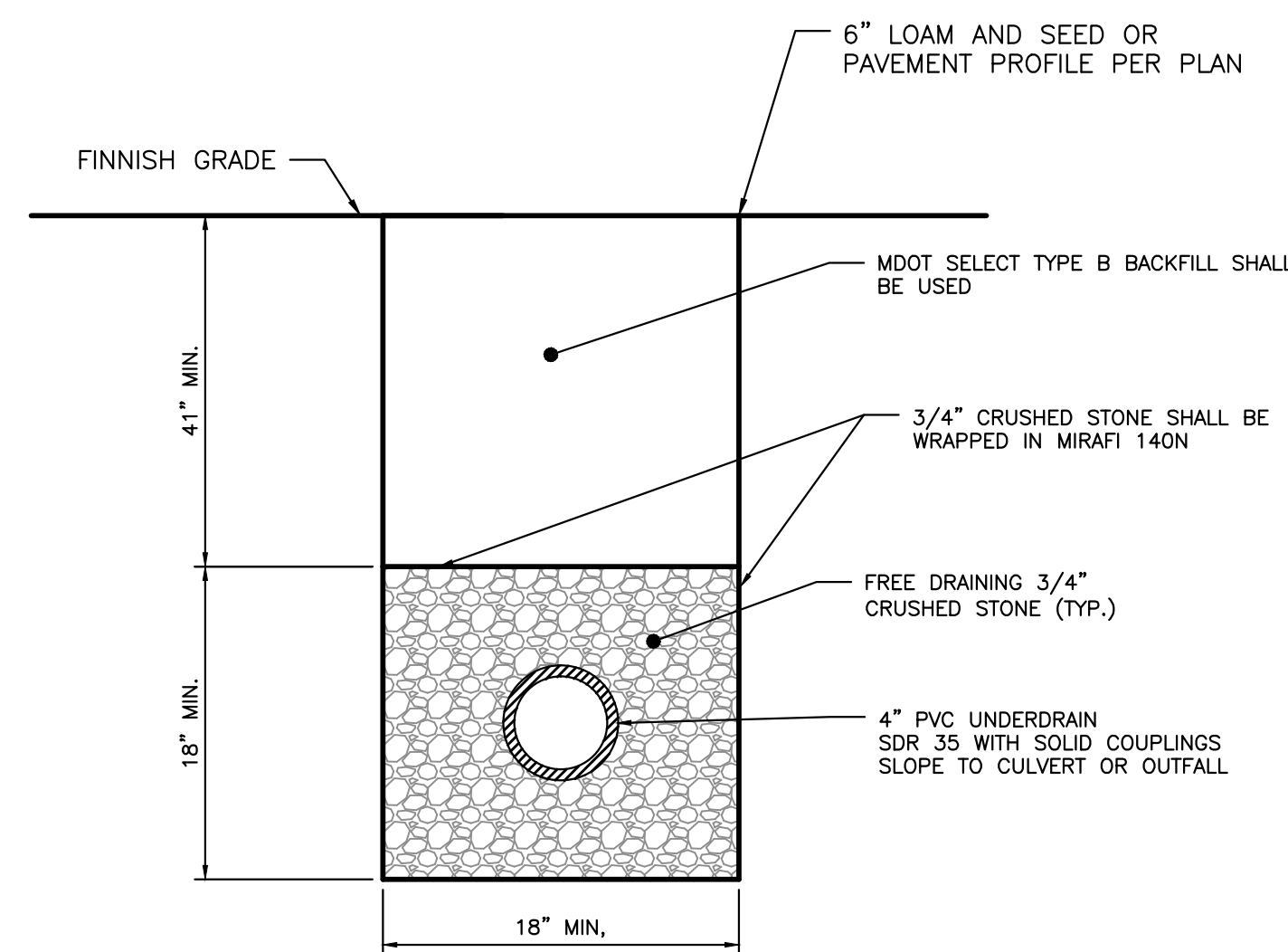
- REFER TO THE CRICK PAVING DETAIL FOR CONSTRUCTION OF THE BASE AND SUBBASE MATERIALS
- A MINIMUM CONCRETE STRENGTH OF 3000 PSI IS RECOMMENDED. THE CONCRETE SHOULD BE VIBRATED TO ELIMINATE AIR POCKETS.
- PAVERS TO BE 1/8" ABOVE CHANNEL EDGE. A BEAD OF SEALANT CAN BE USED BETWEEN THE RAIL & CONCRETE.
- REFER TO ACO'S LATEST INSTALLATION INSTRUCTIONS FOR COMPLETE DETAILS.
- CONCRETE BASE THICKNESS SHOULD MATCH SLAB THICKNESS.
- CONTACT ACO FOR RECOMMENDATIONS ON DRAINING WHEN USING MEMBRANE MATERIAL WITH BRICKSLOT.
- PAVERS SHALL BE ACO DRAIN, K1000S BRICKSLOT, LOAD CLASS A-C: PAVERS.



ACO BRICK SLOT DETAIL
NOT TO SCALE

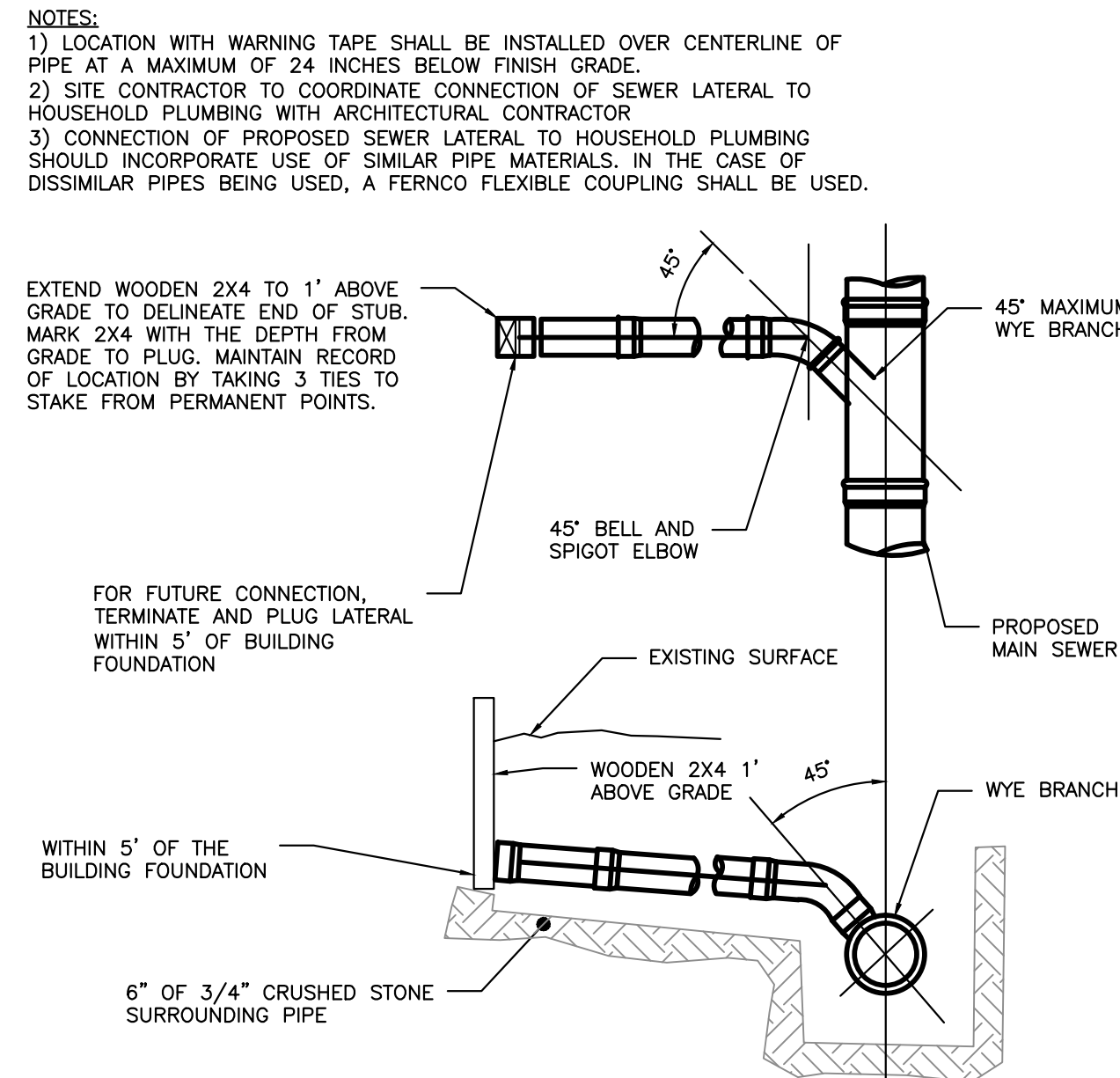


CATCH BASIN INLET PROTECTION
NOT TO SCALE

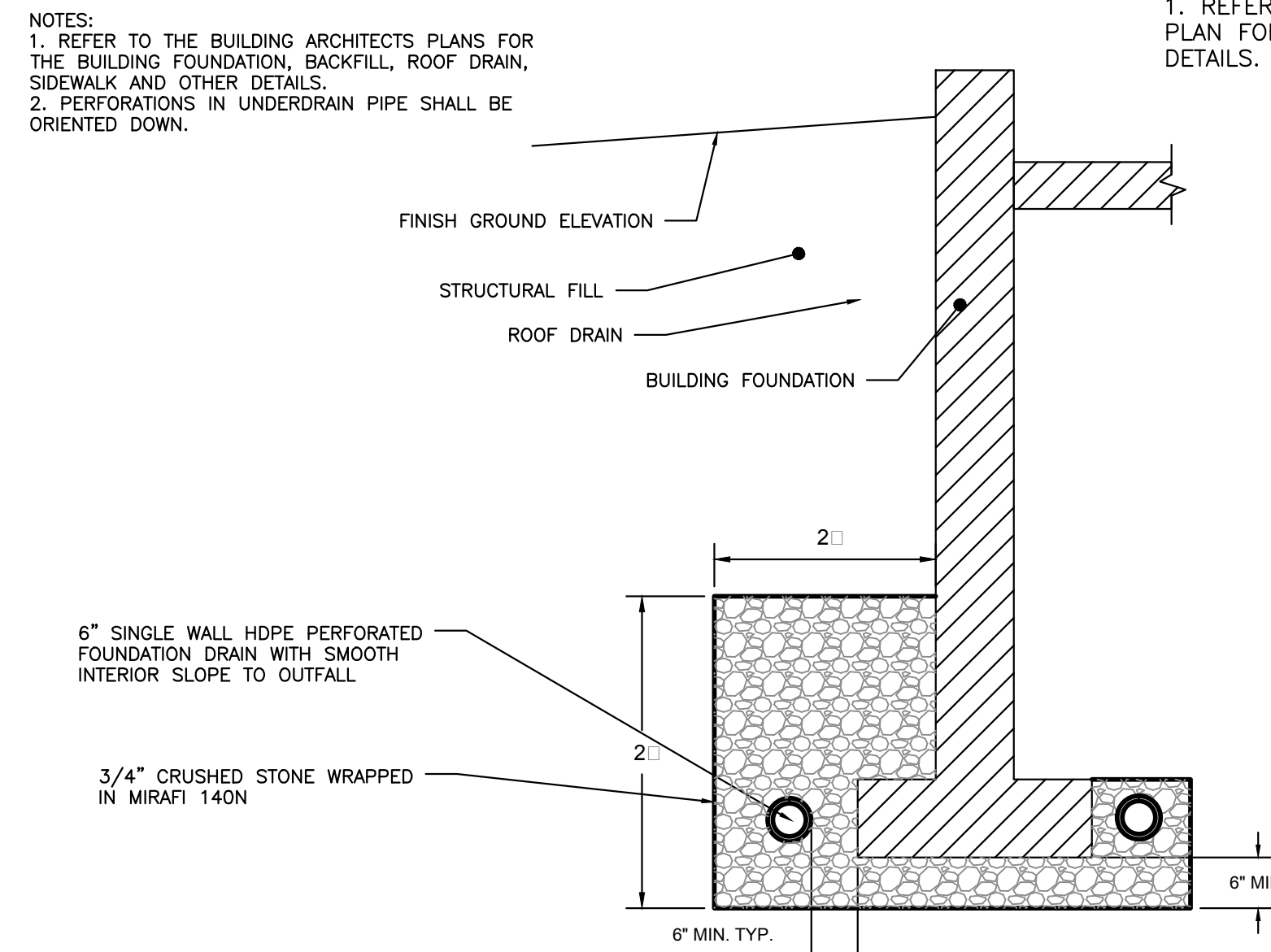


- NOTES:
1. MINIMUM UNDERDRAIN SLOPE 0.0025 (0.25%)
2. PERFORATIONS IN UNDERDRAIN PIPE SHALL BE ORIENTED DOWN.

UNDERDRAIN DETAIL
NOT TO SCALE



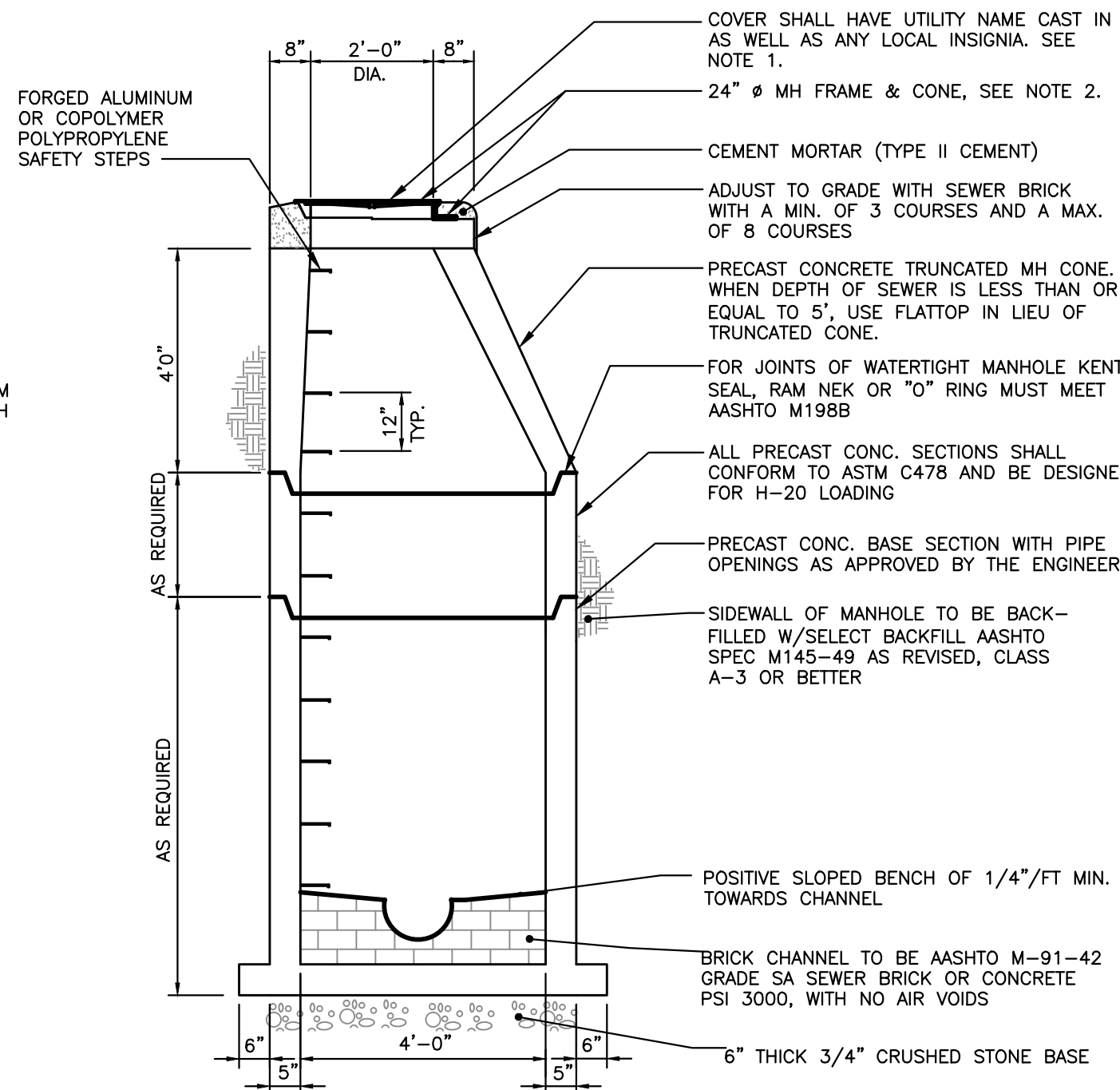
SEWER TEE/WYE CONNECTION DETAIL
NOT TO SCALE



FOUNDATION DRAIN DETAIL
NOT TO SCALE

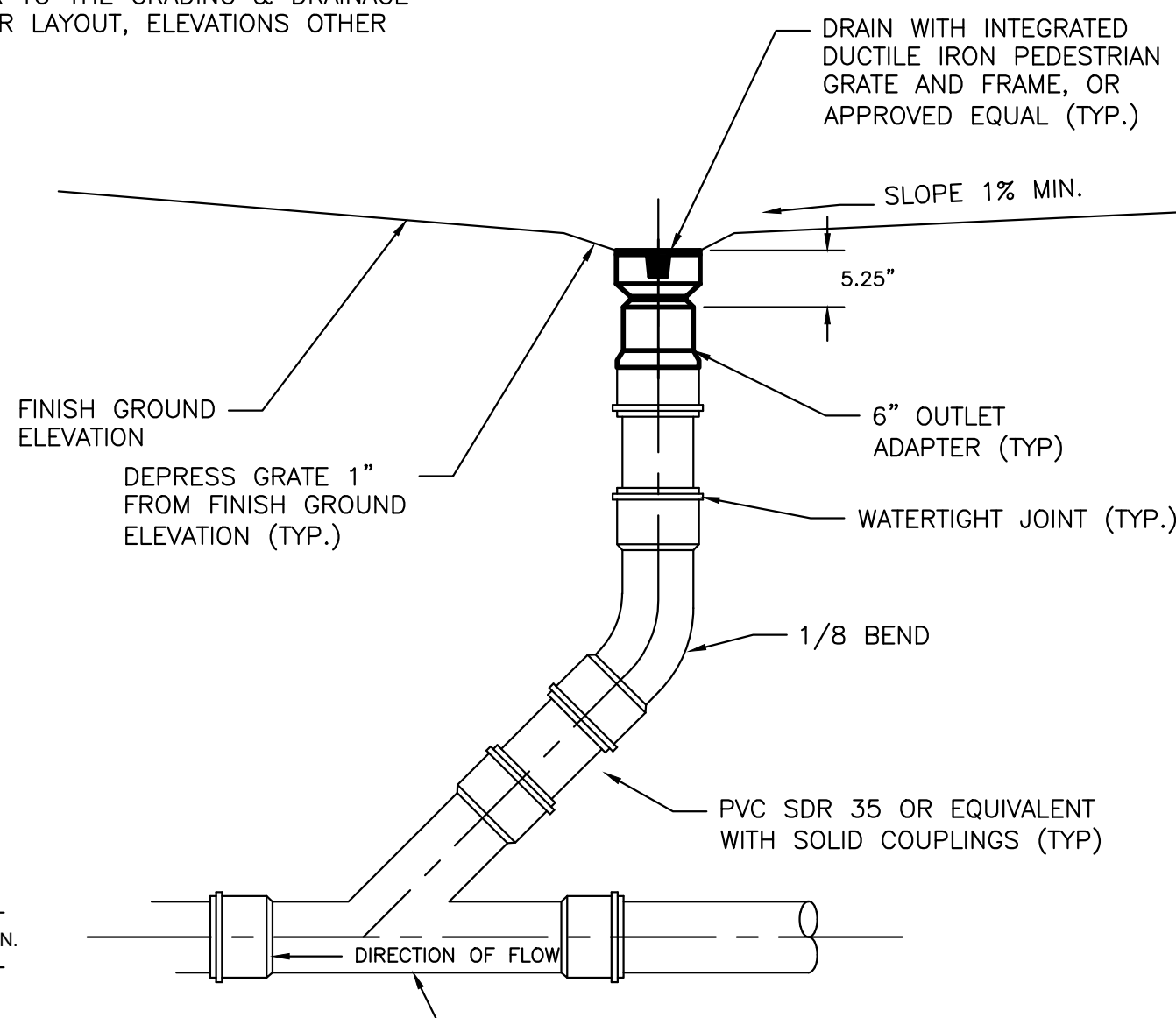
NOTES:

- MANHOLE COVER FOR SEWER MANHOLE SHALL BE ENGRAVED "SEWER", AND SHALL BE EITHER ITEM # 2160A AS MANUFACTURED BY NEENAH FOUNDRY, OR ITEM # 14960002 AS MANUFACTURED BY NEENAH FOUNDRY, MANHOLE COVER FOR STORM SEWER SHALL BE ENGRAVED "DRAIN", AND SHALL BE EITHER ITEM # 2160A AS MANUFACTURED BY NEENAH FOUNDRY, OR ITEM # 14960003 AS MANUFACTURED BY NEENAH FOUNDRY.
- MANHOLE FRAME SHALL BE EITHER ITEM # 14960001, AS MANUFACTURED BY NEENAH FOUNDRY, OR ITEM # 19602, AS MANUFACTURED BY EAST JORDAN CO.
- WITHIN CITY OF PORTLAND ROW, STORM DRAIN MANHOLE SHALL CONFORM WITH "STANDARD PRECAST SEWER MANHOLE DETAIL", WITH THE EXCEPTION THAT THE COVER SHALL BE MARKED AS "DRAIN". REFER TO CITY OF PORTLAND TECHNICAL MANUAL, SECTION 2 - SANITARY SEWER AND STORM DRAIN, FIGURE II-1
- SUBMITTAL REQUIRED FOR MANHOLES, MANHOLE FRAMES & MANHOLE COVERS



STANDARD PRECAST SEWER MANHOLE
NOT TO SCALE

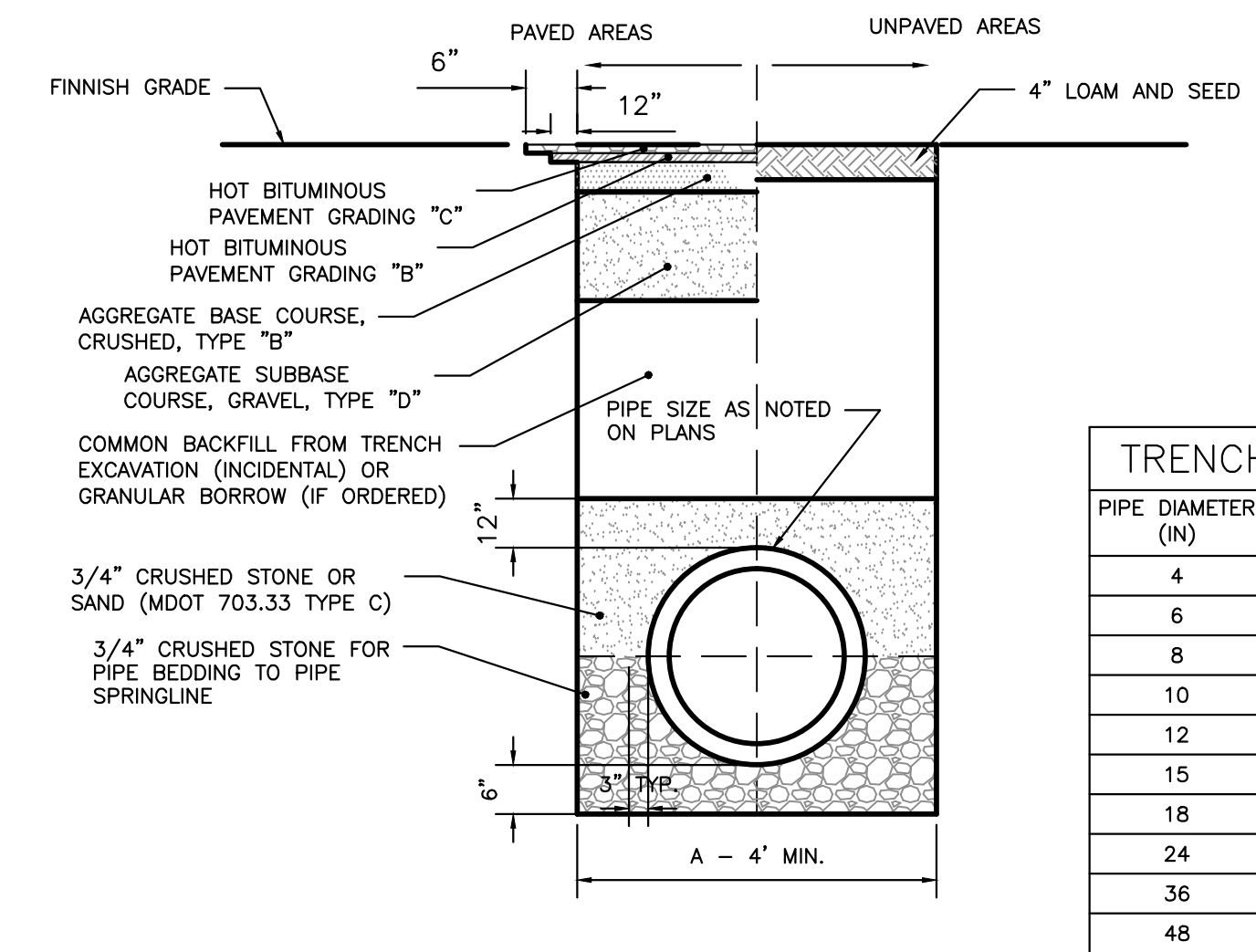
- NOTES:
1. REFER TO THE GRADING & DRAINAGE PLAN FOR LAYOUT, ELEVATIONS OTHER DETAILS.



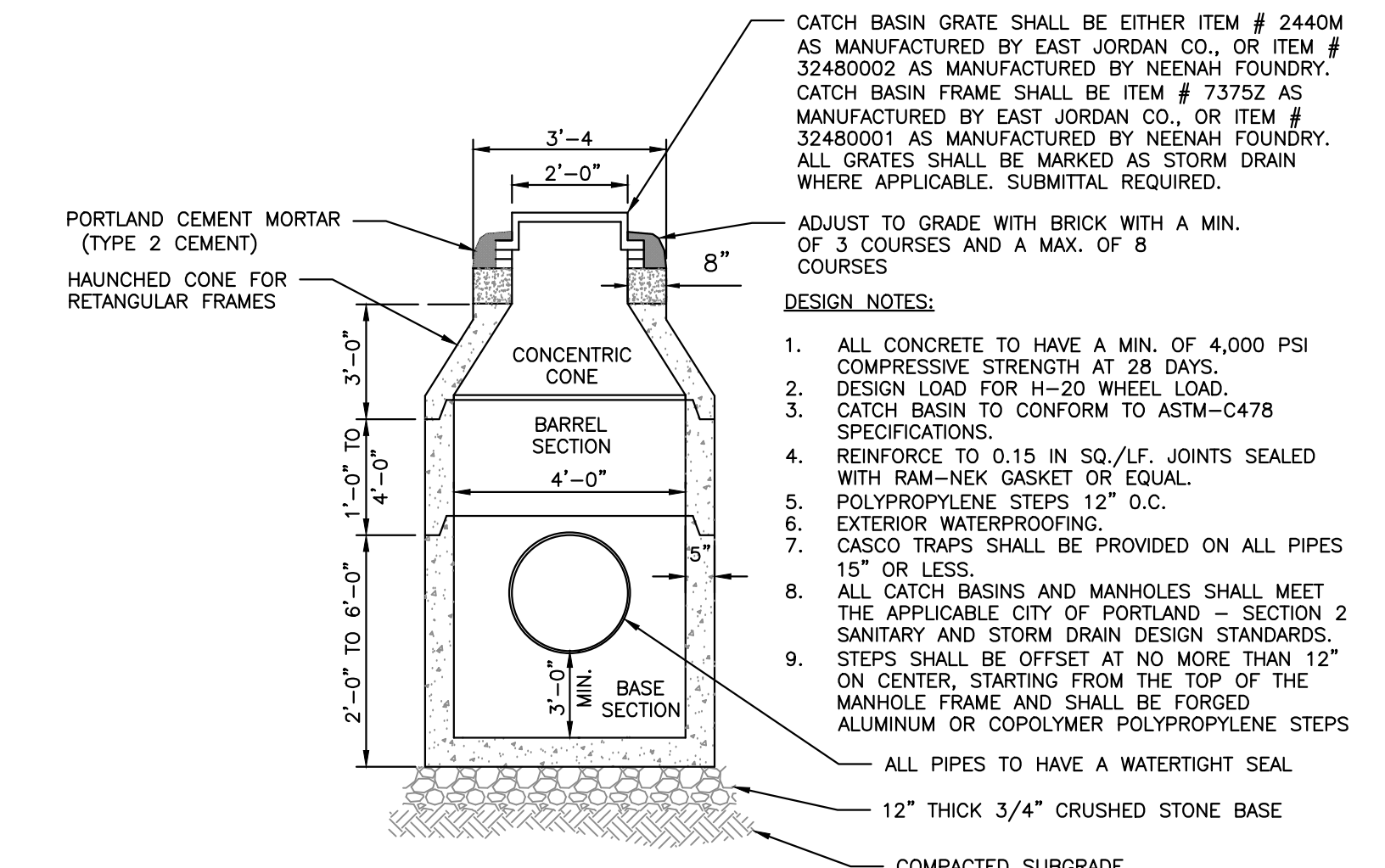
INLINE DRAIN DETAIL
NOT TO SCALE

DESIGN NOTES:

- ANY ALTERNATE TRENCHING METHODS SHALL BE APPROVED IN ADVANCE BY THE CITY.
- ALL CONSTRUCTION METHODS SHALL CONFORM TO THE CITY OF PORTLAND TECHNICAL STANDARDS FIGURE II-2.
- BRACING & SHEETING OR OTHER TRENCH PROTECTION TO BE PROVIDED TO MEET APPLICABLE STATE AND O.S.H.A SAFETY STANDARDS. ALL SUCH TRENCH PROTECTION SHALL BE THE RESPONSIBILITY OF THE CONTRACTOR.
- WHERE APPLICABLE, PERFORATIONS IN STORM DRAIN (PERF.SD) SHALL BE ORIENTED UP.
- ALL STORM DRAINS SHALL BE PVC SDR 35 MIN PS-46 RATING OR OR IN ACCORDANCE WITH CITY OF PORTLAND TECHNICAL MANUAL, SECTION 2 - SANITARY SEWER AND STORM DRAIN - PART 2.5.2
- IN PAVED AREAS, DEPTHS OF GRAVEL AND HOT MIX ASPHALT PAVEMENT SHALL MATCH THE GREATER OF EXISTING CONDITIONS OR THE REQUIREMENTS FOR THE CORRESPONDING STREET CLASSIFICATION.

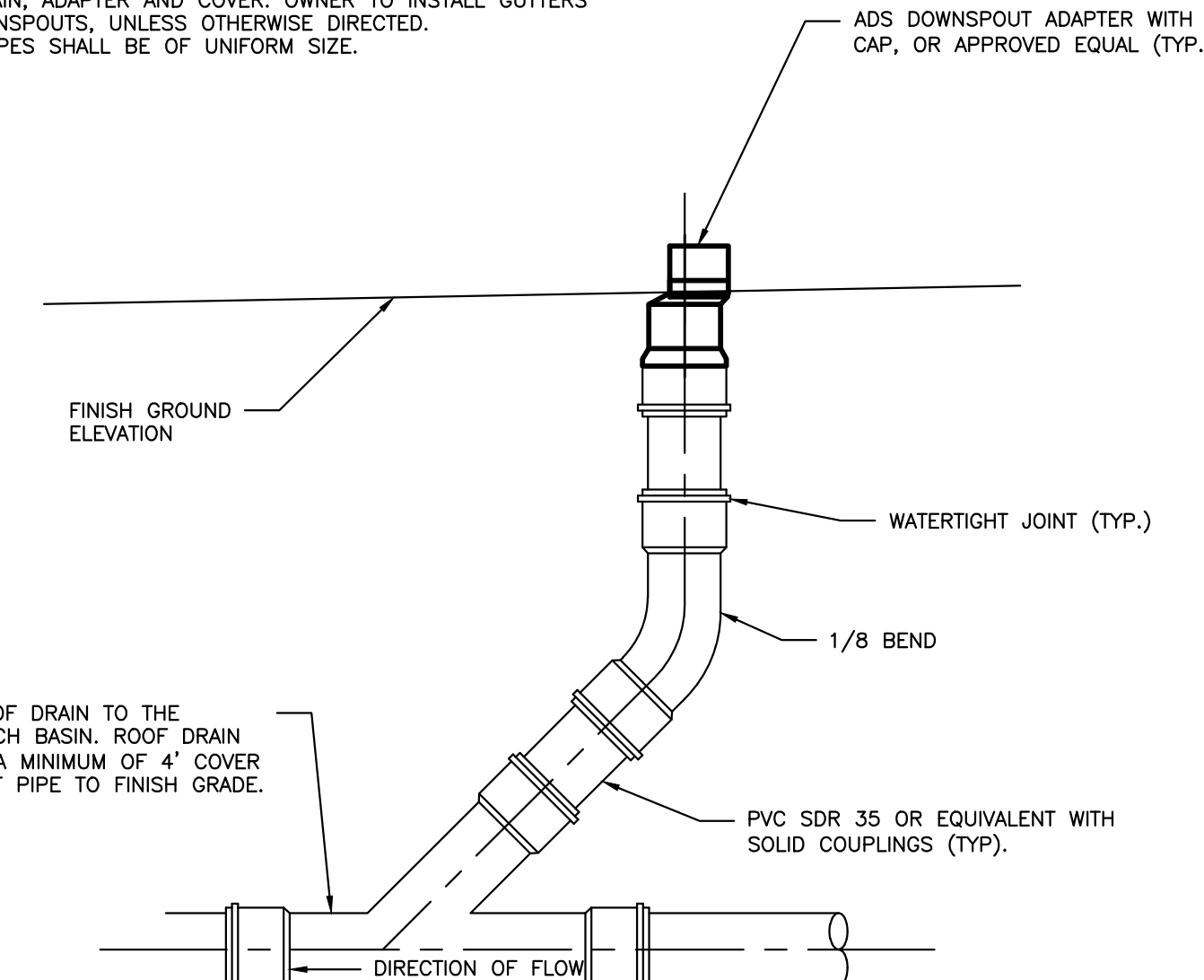


CITY OF PORTLAND TYPICAL PIPE TRENCH DETAIL
NOT TO SCALE



4'-0" DIAMETER PRECAST CATCH BASIN/MANHOLE
NOT TO SCALE

- NOTES:
1. CONTRACTOR RESPONSIBLE FOR THE INSTALLATION OF THE ROOF DRAIN, ADAPTER AND COVER. OWNER TO INSTALL GUTTERS AND DOWNSPOUTS, UNLESS OTHERWISE DIRECTED.
2. ALL PIPES SHALL BE OF UNIFORM SIZE.



ROOF DRAIN DETAIL
NOT TO SCALE

PERMIT DRAWINGS
NOT FOR CONSTRUCTION

ISSUED FOR	DATE	BY
WORKSHOP #2	11/12/13	WHS
FINAL SUBMISSION	12/2/13	WHS
MAINE DEP MCGP	12/16/13	WHS

REVISION	REV. DATE	BY
REV. STANDARD DETAIL	12/4/13	WHS
STAFF COMMENTS	12/8/13	WHS

DRAWING NAME: DRAINAGE DETAILS - 1

PROJECT NAME: MUNJOY HEIGHTS

CLIENT: REDEFERN MUNJOY, LLC.
P.O. BOX 8816, PORTLAND, MAINE 04104

DRAWING NAME:

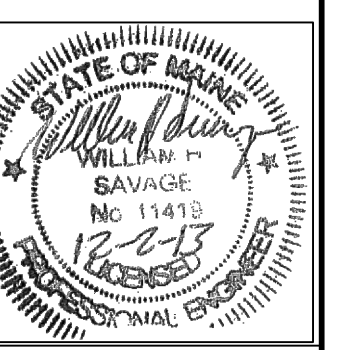
PROJECT NAME:

CLIENT:

A C O R N
ENGINEERING, INC.

ACORN ENGINEERING, INC.
3372 PORTLAND, MAINE 04104
P.O. BOX 3372 PORTLAND, MAINE 04104
(207) 775-2655

FILE: 1047_details
DATE: 7/11/13
JN: 302-001
SCALE: NTS
DESIGN BY: WHS
DRAWN BY: ZRJ
CHECKED BY: WHS



DRAWING NO.
C-41