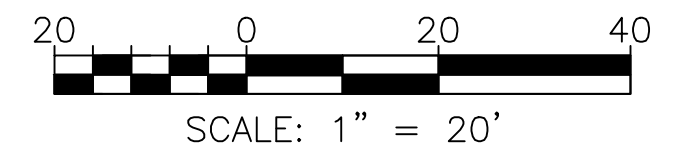
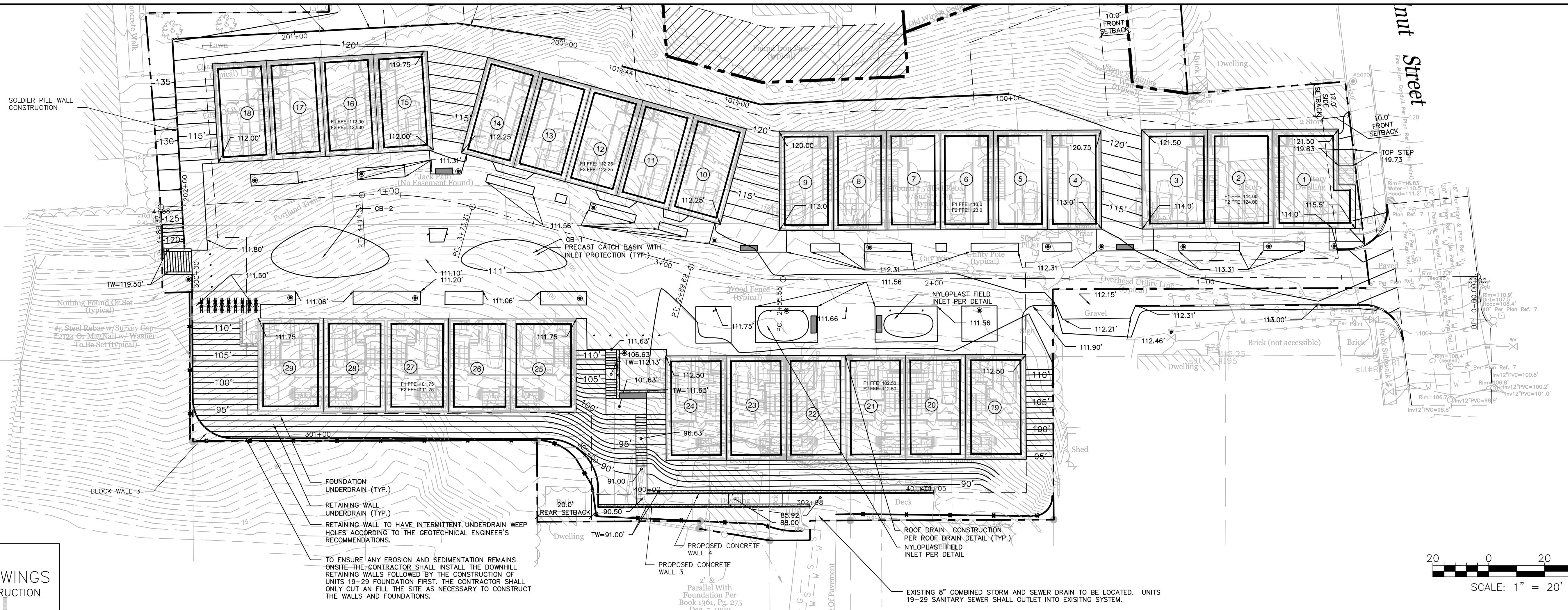
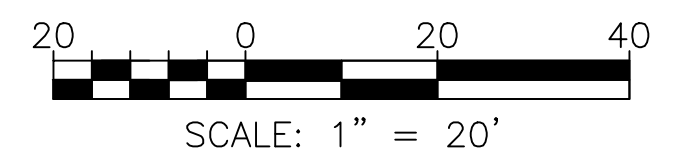
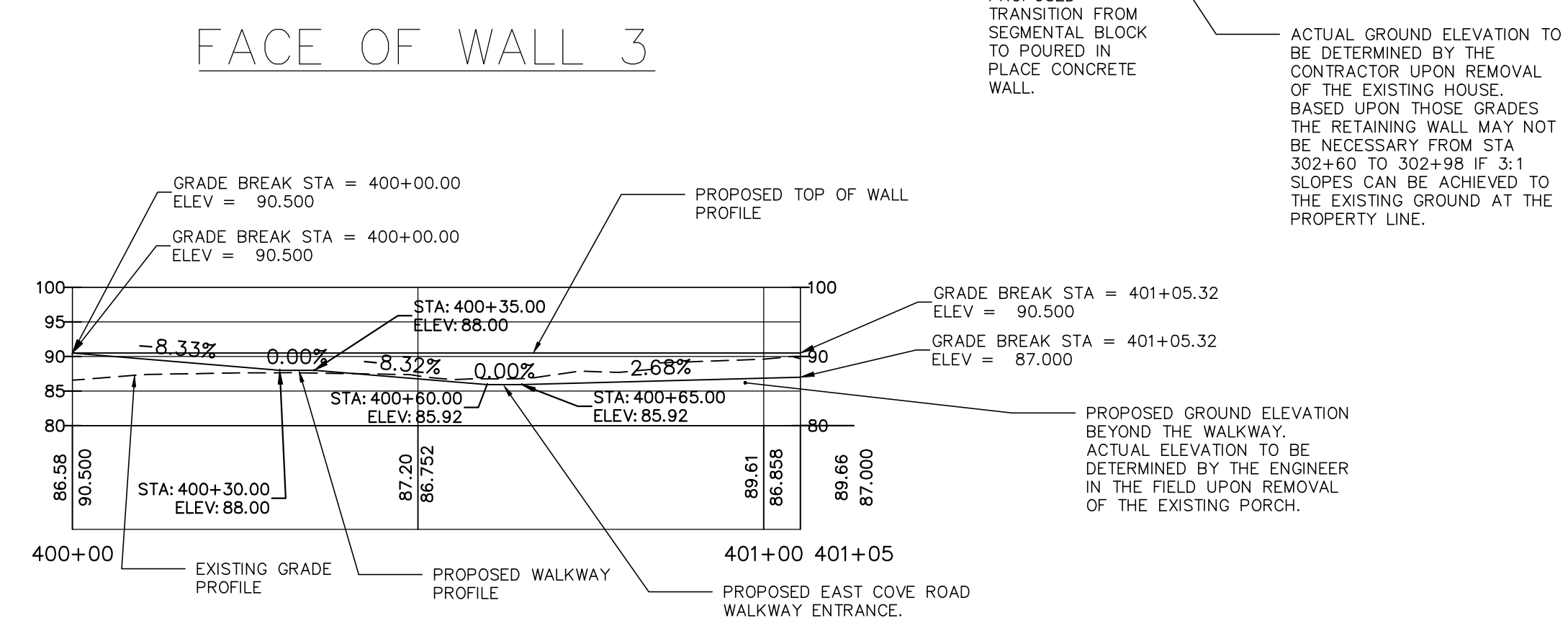
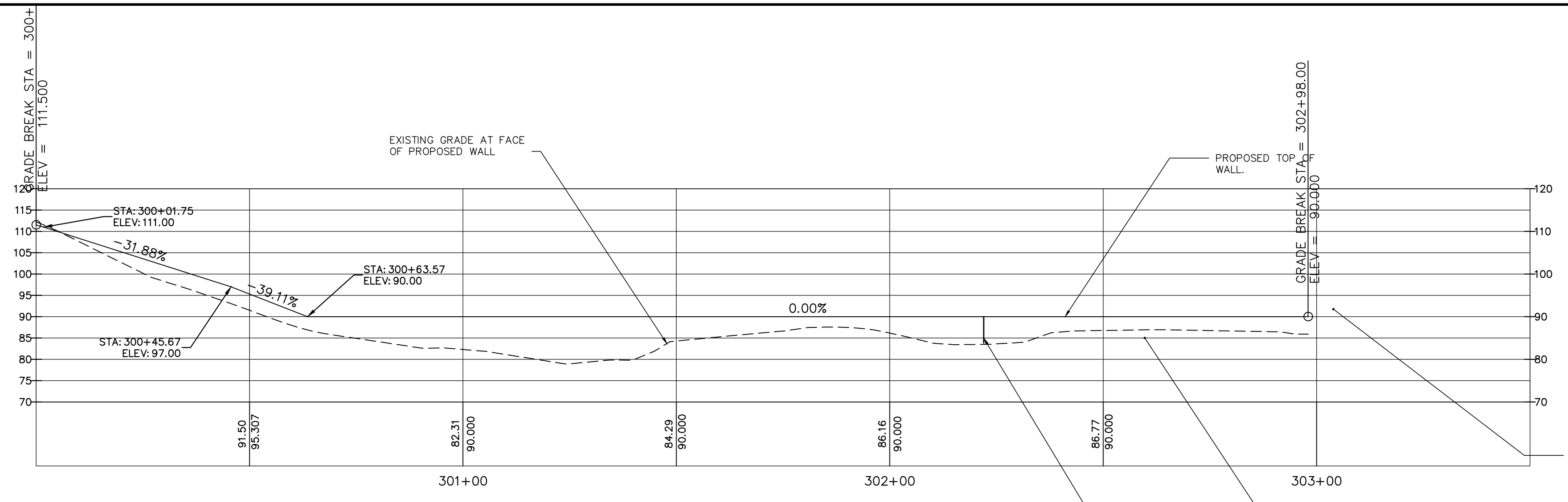


NOTES:
 1. SUMMIT GEOENGINEERING SERVICES IN COORDINATION WITH STRUCTURAL INTEGRITY CONSULTING ENGINEERS, INC. SHALL PROVIDE THE RETAINING WALL DESIGN, GLOBAL STABILITY ANALYSIS, AND THE DESIGN OF THE TEMPORARY SOIL RESTRAINT MEASURES, AS REQUIRED.



PERMIT DRAWINGS
 NOT FOR CONSTRUCTION

ISSUED FOR	DATE	BY
CITY SUBMISSION	9/23/13	WHS
WORKSHOP #2	11/7/13	WHS
FINAL SUBMISSION	12/2/13	WHS
MAINE DEP MCGP	12/16/13	WHS

REVISION	DATE	BY
STAFF COMMENTS	12/6/13	WHS

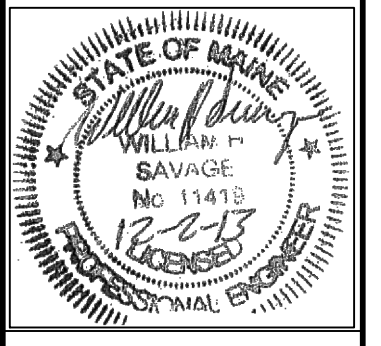
DRAWING NAME: WALL 3 PROFILE PLAN
 PROJECT NAME: MUNJOY HEIGHTS
 CLIENT: REDFERN MUNJOY, LLC.
 P.O. BOX 8816, PORTLAND, MAINE 04104

ACORN ENGINEERING, INC.
 333 BROADWAY, PORTLAND, MAINE 04104
 (207) 775-2655

ACORN ENGINEERING, INC. ENGINEERING INC.

THIS PLAN SHALL NOT BE MODIFIED WITHOUT WRITTEN PERMISSION FROM THE ENGINEER. ANY CHANGES SHALL BE AT THE CLIENT'S RISK AND WITHOUT LIABILITY TO ACORN ENGINEERING, INC.

FILE: 1047_CIVIL
 DATE: 9/23/13
 JUN: 1047
 SCALE: 1"=20'
 DESIGN BY: WHS
 DRAWN BY: ZRJ
 CHECKED BY: WHS



DRAWING NO. C-33