

GRAPHIC DEPICTION		DESCRIPTION	
		TOTAL WALL R-VALUE = 31.9 - FIBERCEMENT LAP SIDING 6" EXPOSURE HIDDEN FASTENERS - OR FIBERCEMENT PANEL SIDING ON PT 3/8" X 4 VERTICAL FURRING STRIPS 16" O.C. MAX (SEE ELEVATIONS) - DRAINAGE PLANE (SHOWN DASHED) - 5/8" PLYWOOD SHEATHING FASTENED THROUGH TO STUDS - 2" EXTRUDED POLYSTYRENE RIGID INSULATION BOARD (R-10 MIN) - 7/16" EXTERIOR SHEATHING (SEE STRUCTURAL DRAWINGS) (7/16" FIRE RETARDANT TREATED PLYWOOD SHEATHING TO 4" OUT FROM EACH SIDE OF PARTY (DEMISING) WALLS) - 2X6 WOOD STUDS AT 16" O.C. (SEE STRUCTURAL DRAWINGS) (PROVIDE 2X6 CONTINUOUS BLOCKING AT MID-HEIGHT OF WALL) - 5-1/2" SPRAY APPLIED DENSE-PACK CELLULOSE INSULATION (R-20.9 MIN) NOMINAL DRY DENSITY 3.5LB / CUBIC FT (DRY COMPLETELY PRIOR TO GWB INSTALLATION) - MESH NETTING AS REQUIRED - LAYER OF 5/8" GWB	
TYPE		FIRE RATING	
E1		N/A	
TYPE		UL NUMBER	
		N/A	
TYPE		STC RATING	
		N/A	
TYPE		IIC RATING	
		N/A	

GRAPHIC DEPICTION		DESCRIPTION	
		TOTAL WALL R-VALUE = 10 - DECOPLAST DECO-DIRECT SYSTEM (DDS) - 5/16" DUROCK CEMENT BOARD FASTENED THROUGH TO CONCRETE WITH TAP-CON FASTENER - 2" XPS RIGID INSULATION (R-10) - FLUID APPLIED DAMPPROOFING - REINFORCED CONCRETE FOUNDATION WALL (SEE STRUCTURAL DRAWINGS)	
TYPE		FIRE RATING	
E2		N/A	
TYPE		UL NUMBER	
		N/A	
TYPE		STC RATING	
		N/A	
TYPE		IIC RATING	
		N/A	

GRAPHIC DEPICTION		DESCRIPTION	
		TOTAL WALL R-VALUE = 31.9 - FIBERCEMENT LAP SIDING 6" EXPOSURE HIDDEN FASTENERS - OR FIBERCEMENT PANEL SIDING ON PT 3/8" X 4 VERTICAL FURRING STRIPS 16" O.C. MAX (SEE ELEVATIONS) - DRAINAGE PLANE (SHOWN DASHED) - 5/8" PLYWOOD SHEATHING FASTENED THROUGH TO STUDS - 2" EXTRUDED POLYSTYRENE RIGID INSULATION BOARD (R-10 MIN) - LAYER OF 5/8" TYPE-X GWB - 7/16" EXTERIOR SHEATHING (SEE STRUCTURAL DRAWINGS) (7/16" FIRE RETARDANT TREATED PLYWOOD SHEATHING TO 4" OUT FROM EACH SIDE OF PARTY (DEMISING) WALLS) - 2X6 WOOD STUDS AT 16" O.C. (SEE STRUCTURAL DRAWINGS) (PROVIDE 2X6 CONTINUOUS BLOCKING AT MID-HEIGHT OF WALL) - 5-1/2" SPRAY APPLIED DENSE-PACK CELLULOSE INSULATION (R-20.9 MIN) NOMINAL DRY DENSITY 3.5LB / CUBIC FT (DRY COMPLETELY PRIOR TO GWB INSTALLATION) - MESH NETTING AS REQUIRED - LAYER OF 5/8" TYPE-X GWB	
TYPE		FIRE RATING	
E3		1HR	
TYPE		UL NUMBER	
		U364	
TYPE		STC RATING	
		N/A	
TYPE		IIC RATING	
		N/A	

GRAPHIC DEPICTION		DESCRIPTION	
		TOTAL WALL R-VALUE = 31.9 - FIBERCEMENT LAP SIDING 6" EXPOSURE HIDDEN FASTENERS - OR FIBERCEMENT PANEL SIDING ON PT 3/8" X 4 VERTICAL FURRING STRIPS 16" O.C. MAX (SEE ELEVATIONS) - DRAINAGE PLANE (SHOWN DASHED) - 5/8" PLYWOOD SHEATHING FASTENED THROUGH TO STUDS - 2" EXTRUDED POLYSTYRENE RIGID INSULATION BOARD (R-10 MIN) - LAYER OF 5/8" TYPE-X GWB - 7/16" EXTERIOR SHEATHING (SEE STRUCTURAL DRAWINGS) (7/16" FIRE RETARDANT TREATED PLYWOOD SHEATHING TO 4" OUT FROM EACH SIDE OF PARTY (DEMISING) WALLS) - 2X6 WOOD STUDS AT 16" O.C. (SEE STRUCTURAL DRAWINGS) (PROVIDE 2X6 CONTINUOUS BLOCKING AT MID-HEIGHT OF WALL) - 5-1/2" SPRAY APPLIED DENSE-PACK CELLULOSE INSULATION (R-20.9 MIN) NOMINAL DRY DENSITY 3.5LB / CUBIC FT (DRY COMPLETELY PRIOR TO GWB INSTALLATION) - MESH NETTING AS REQUIRED - (2) LAYERS OF 5/8" TYPE-X GWB	
TYPE		FIRE RATING	
E4		2HR	
TYPE		UL NUMBER	
		N/A	
TYPE		STC RATING	
		N/A	
TYPE		IIC RATING	
		N/A	

GRAPHIC DEPICTION		DESCRIPTION	
		- FIBERCEMENT LAP SIDING 6" EXPOSURE HIDDEN FASTENERS - DRAINAGE PLANE (SHOWN DASHED) - 5/8" PLYWOOD SHEATHING FASTENED THROUGH TO STUDS - 2X4 (ACTUAL) HORIZONTAL STRAPPING AT 16" O.C. - 7/16" EXTERIOR SHEATHING (SEE STRUCTURAL DRAWINGS) - 2X6 WOOD STUDS AT 16" O.C. (SEE STRUCTURAL DRAWINGS)	
TYPE		FIRE RATING	
E5		N/A	
TYPE		UL NUMBER	
		N/A	
TYPE		STC RATING	
		N/A	
TYPE		IIC RATING	
		N/A	

GRAPHIC DEPICTION		DESCRIPTION	
		- LAYER OF 5/8" GWB - 2X4 WOOD STUDS AT 16" O.C. - 3-1/2" MINERAL WOOL SOUND/FIRE BATT INSULATION - 3/4" MIN. CLEAR SPACE BETWEEN LINER PANEL AND 2X FRAMING - (2) LAYERS OF 1" THICK DENSGLASS ULTRA SHAFTLINER WITH H-STUDS 24" O.C. - ATTACHMENT CLIPS - 3/4" MIN. CLEAR SPACE BETWEEN LINER PANEL AND 2X FRAMING - 3-1/2" MINERAL WOOL SOUND/FIRE BATT INSULATION - 2X4 WOOD STUDS AT 16" O.C. - LAYER OF 5/8" GWB	
TYPE		FIRE RATING	
2A		2 HR	
TYPE		UL NUMBER	
		U373	
TYPE		STC RATING	
		60	
TYPE		IIC RATING	
		N/A	

GRAPHIC DEPICTION		DESCRIPTION	
		- 2 LAYERS OF 5/8" TYPE-X GWB - 2X4 WOOD STUDS AT 16" O.C. - 3-1/2" ACOUSTICAL FIRE BATT INSULATION - 2 LAYERS OF 5/8" TYPE-X GWB	
TYPE		FIRE RATING	
2B		2 HR	
TYPE		UL NUMBER	
		U301	
TYPE		STC RATING	
		35-39	
TYPE		IIC RATING	
		N/A	

GRAPHIC DEPICTION		DESCRIPTION	
		- 2 LAYERS OF 5/8" TYPE-X GWB - 2X4 WOOD STUDS AT 16" O.C. - 3-1/2" MINERAL WOOL SOUND/FIRE BATT INSULATION - 1" SPACE BETWEEN ROWS OF STUDS (STAGGERED FROM OTHER ROW) (PROVIDE 2X4 CONTINUOUS BLOCKING AT MID-HEIGHT OF WALL BOTH ROWS OF STUDS) - 3-1/2" MINERAL WOOL SOUND/FIRE BATT INSULATION - LAYER OF PLYWOOD SHEATHING BETWEEN ROWS OF STUDS AT SELECT LOCATIONS (SEE STRUCTURAL DRAWINGS) - BEARING PLATES (NOT SHOWN) 2X4 TOP AND BOTTOM - 2 LAYERS OF 5/8" TYPE-X GWB	
TYPE		FIRE RATING	
2C		2 HR	
TYPE		UL NUMBER	
		SIM. U301	
TYPE		STC RATING	
		58	
TYPE		IIC RATING	
		N/A	

GRAPHIC DEPICTION		DESCRIPTION	
		- FIBERCEMENT SIDING PANEL - DRAINAGE PLANE - EXTERIOR SHEATHING - 2 LAYERS OF 5/8" TYPE-X GWB - 2X6 WOOD STUDS AT 16" O.C. - 2 LAYERS OF 5/8" TYPE-X GWB - EXTERIOR SHEATHING - DRAINAGE PLANE - FIBERCEMENT SIDING PANEL	
TYPE		FIRE RATING	
2D		2 HR	
TYPE		UL NUMBER	
		SIM. U301	
TYPE		STC RATING	
		N/A	
TYPE		IIC RATING	
		N/A	

GRAPHIC DEPICTION		DESCRIPTION	
		- LAYER OF 5/8" TYPE-X GWB - 2X4 WOOD STUDS AT 16" O.C. - 3-1/2" MINERAL WOOL SOUND/FIRE BATT INSULATION - 1" SPACE BETWEEN ROWS OF STUDS (STAGGERED FROM OTHER ROW) (PROVIDE 2X4 CONTINUOUS BLOCKING AT MID-HEIGHT OF WALL BOTH ROWS OF STUDS) - 3-1/2" MINERAL WOOL SOUND/FIRE BATT INSULATION - LAYER OF PLYWOOD SHEATHING BETWEEN ROWS OF STUDS AT SELECT LOCATIONS (SEE STRUCTURAL DRAWINGS) - BEARING PLATES (NOT SHOWN) 2X4 TOP AND BOTTOM - LAYER OF 5/8" TYPE-X GWB	
TYPE		FIRE RATING	
1A		1 HR	
TYPE		UL NUMBER	
		U305	
TYPE		STC RATING	
		58	
TYPE		IIC RATING	
		N/A	

GRAPHIC DEPICTION		DESCRIPTION	
		- LAYER OF 5/8" TYPE-X GWB - 2X4 WOOD STUDS AT 16" O.C. - 3-1/2" ACOUSTICAL FIRE BATT INSULATION - LAYER OF 5/8" TYPE-X GWB	
TYPE		FIRE RATING	
1B		1 HR	
TYPE		UL NUMBER	
		U311	
TYPE		STC RATING	
		35-39	
TYPE		IIC RATING	
		N/A	

GRAPHIC DEPICTION		DESCRIPTION	
		- LAYER OF 5/8" TYPE-X GWB - 2X6 WOOD STUDS AT 16" O.C. - 5-1/2" ACOUSTICAL FIRE BATT INSULATION - LAYER OF 5/8" TYPE-X GWB	
TYPE		FIRE RATING	
1C		1 HR	
TYPE		UL NUMBER	
		U311	
TYPE		STC RATING	
		35-39	
TYPE		IIC RATING	
		N/A	

GRAPHIC DEPICTION		DESCRIPTION	
		- LAYER OF 5/8" TYPE-X GWB - 2X4 WOOD STUDS AT 16" O.C. - 3-1/2" ACOUSTICAL FIRE BATT INSULATION - LAYER OF 5/8" TYPE-X GWB - CONTINUOUS SHAFT WALL WITH CLIPS TO STRUCTURE 16" O.C. AT EACH FLOOR AND ROOF LEVEL	
TYPE		FIRE RATING	
1D		1 HR	
TYPE		UL NUMBER	
		U311	
TYPE		STC RATING	
		35-39	
TYPE		IIC RATING	
		N/A	

GRAPHIC DEPICTION		DESCRIPTION	
		- FIBERCEMENT SIDING PANEL - 5/8" X 4 PT STRAPPING 16" O.C. - DRAINAGE PLANE - EXTERIOR SHEATHING - 1 LAYER OF 5/8" TYPE-X GWB - 2X6 WOOD STUDS AT 16" O.C. - 1 LAYER OF 5/8" TYPE-X GWB - EXTERIOR SHEATHING - DRAINAGE PLANE - 5/8" X 4 PT STRAPPING 16" O.C. - FIBERCEMENT SIDING PANEL	
TYPE		FIRE RATING	
1E		1 HR	
TYPE		UL NUMBER	
		SIM. U311	
TYPE		STC RATING	
		N/A	
TYPE		IIC RATING	
		N/A	

GRAPHIC DEPICTION		DESCRIPTION	
		ROOF TOP PRIVACY WALL - FIBERCEMENT PANEL SIDING ON PT 3/8" X 4 VERTICAL FURRING STRIPS 16" O.C. MAX - DRAINAGE PLANE - LAYER OF 5/8" PLYWOOD - 2X4 WOOD STUDS AT 16" O.C. CONTINUOUS FROM LEVEL BELOW (SEE STRUCTURAL DWGS) - 1" SPACE BETWEEN ROWS OF STUDS OR LARGER SPACE AT 2HR WALL BELOW - 2X4 WOOD STUDS AT 16" O.C. CONTINUOUS FROM LEVEL BELOW (SEE STRUCTURAL DWGS) - LAYER OF 5/8" PLYWOOD - DRAINAGE PLANE - FIBERCEMENT PANEL SIDING ON PT 3/8" X 4 VERTICAL FURRING STRIPS 16" O.C. MAX	
TYPE		FIRE RATING	
NF		N/A	
TYPE		UL NUMBER	
		N/A	
TYPE		STC RATING	
		N/A	
TYPE		IIC RATING	
		N/A	

GRAPHIC DEPICTION		DESCRIPTION	
		- 1" SPACE FROM CONCRETE - 2X4 WOOD STUDS AT 24" O.C. - LAYER OF 5/8" GWB	
TYPE		FIRE RATING	
NE		N/A	
TYPE		UL NUMBER	
		N/A	
TYPE		STC RATING	
		N/A	
TYPE		IIC RATING	
		N/A	

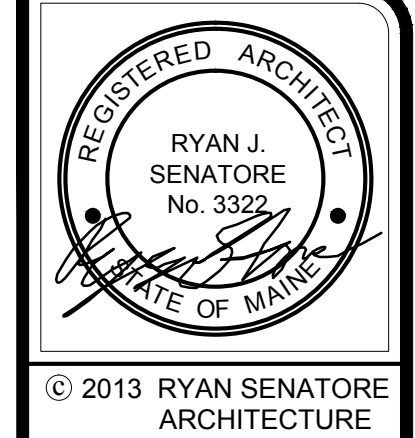
GRAPHIC DEPICTION		DESCRIPTION	
		- LAYER OF 5/8" GWB - 2X6 WOOD STUDS AT 24" O.C. - LAYER OF 5/8" GWB	
TYPE		FIRE RATING	
ND		N/A	
TYPE		UL NUMBER	
		N/A	
TYPE		STC RATING	
		35-39	
TYPE		IIC RATING	
		N/A	

GRAPHIC DEPICTION		DESCRIPTION	
		- LAYER OF 5/8" GWB - 2X6 WOOD STUDS AT 24" O.C. - 5-1/2" SOUND BATT INSULATION - LAYER OF 5/8" GWB	
TYPE		FIRE RATING	
NC		N/A	
TYPE		UL NUMBER	
		N/A	
TYPE		STC RATING	
		35-39	
TYPE		IIC RATING	
		N/A	

GRAPHIC DEPICTION		DESCRIPTION	
		- LAYER OF 5/8" GWB - 2X4 WOOD STUDS AT 24" O.C. - LAYER OF 5/8" GWB	
TYPE		FIRE RATING	
NB		N/A	
TYPE		UL NUMBER	
		N/A	
TYPE		STC RATING	
		N/A	
TYPE		IIC RATING	
		N/A	

GRAPHIC DEPICTION		DESCRIPTION	
		- LAYER OF 5/8" GWB - 2X4 WOOD STUDS AT 24" O.C. - 3-1/2" SOUND BATT INSULATION - LAYER OF 5/8" GWB	
TYPE		FIRE RATING	
NA		N/A	
TYPE		UL NUMBER	
		N/A	
TYPE		STC RATING	
		35-39	
TYPE		IIC RATING	
		N/A	

WALL TYPE NOTES	
1.)	REFER TO STRUCTURAL DRAWINGS FOR STUD SIZE AND SPACING
2.)	FIRE RATED WALLS TO EXTEND UP TO DECKING ABOVE THROUGH THE FLOOR / CEILING ASSEMBLY. AT FLUTED DECKING DRYWALL TO BE CUT TO AND EXTEND UP TO PROFILE OF DECK FLUTES WITH ALLOWANCE FOR DEFLECTION JOINT
3.)	INSTALL WATER RESISTANT GYPSUM WALLBOARD IN ALL RESTROOMS AND TOILET ROOM WALLS AND CEILINGS, AND AT ANY WALL WITH PLUMBING FIXTURES
4.)	PROVIDE 1/2" GWB BEHIND ALL TUBS AND SHOWERS AT EXTERIOR WALLS AND FIRE RATED ASSEMBLIES. PROVIDE ADDITIONAL LAYER OF GWB TO COVER TUB AND SHOWER FLANGE. EXTEND ADDED LAYER ALONG ADJACENT WALLS AND ADJUST DOOR JAMB WIDTHS AS REQUIRED.
5.)	WHEN TWO ADJACENT WALL TYPES HAVE DIFFERING NUMBERS OF LAYERS OF GWB, THE FINISHED FACE OF GWB MUST FORM ONE CONTINUOUS PLANE. ADJUST STUD PLANE LOCATION AS REQUIRED TO ACHIEVE THE CONTINUOUS PLANE
6.)	HOLD BOTTOM OF GWB UP 1/2" FROM CONCRETE, PROVIDE SEALANT AT JOINT.
7.)	ALL WALL TYPES WITH AN INSULATION COMPONENT TO BE ACOUSTICALLY SEALED
8.)	PROVIDE ACOUSTICAL SEALANT AROUND ALL PENETRATING ELEMENTS IN WALLS AND CEILINGS (ELECTRICAL BOXES, DUCTS, PIPES, ETC.)

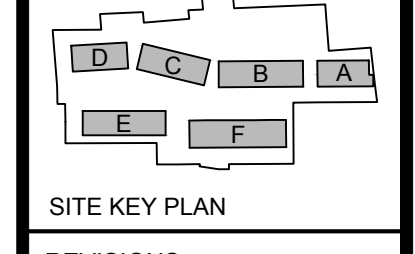


© 2013 RYAN SENATORE ARCHITECTURE

MUNJOY HEIGHTS
79 WALNUT STREET
PORTLAND, MAINE



CONSULTANTS:
Structural Integrity
77 Oak Street
Portland, ME 04101
207-774-4614



REVISIONS:
REVISION #1 - 01/02/14
REVISION #2 - 02/10/14

DATE: DECEMBER 13, 2013
PROJECT No. 1303
DRAWN BY: RJS / RRT
CHECKED BY: RJS
SCALE: AS NOTED

SHEET TITLE:
WALL ASSEMBLIES

A0-1