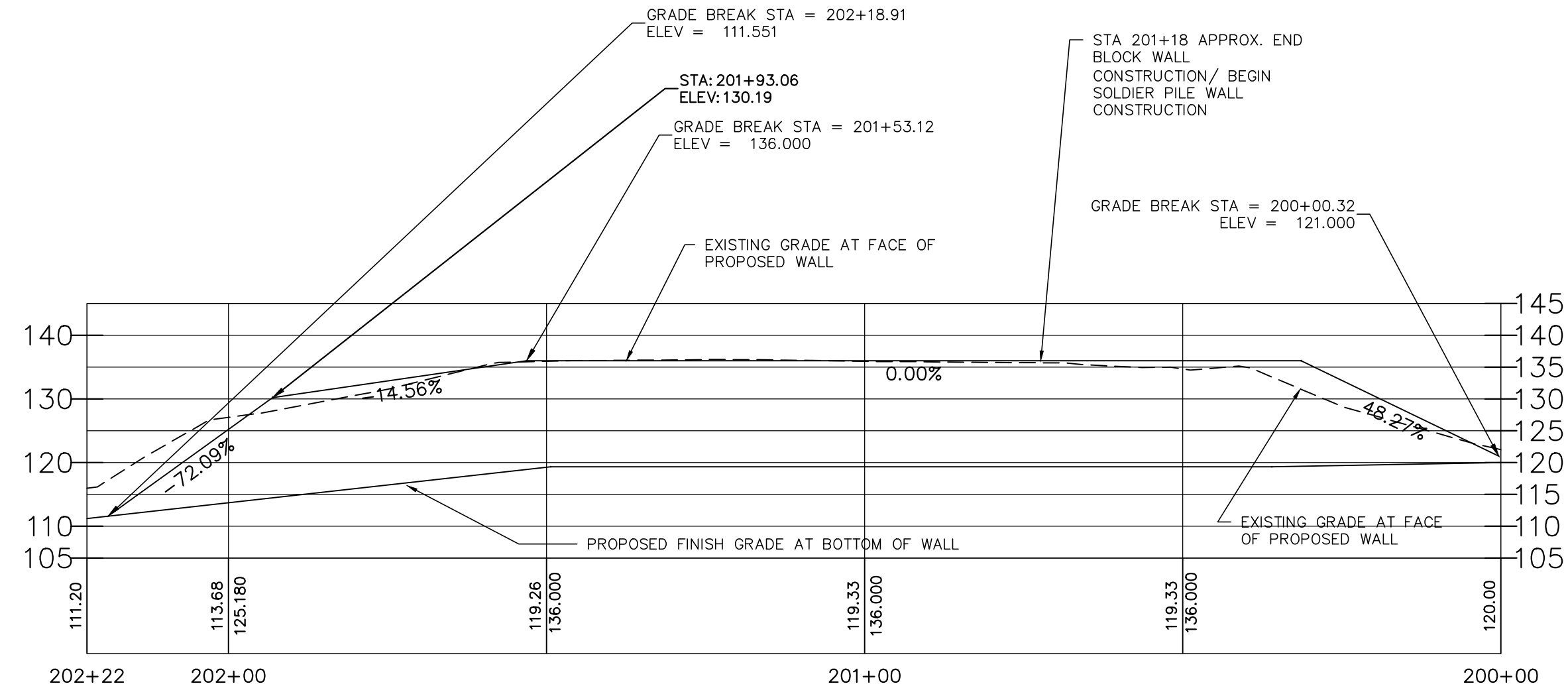
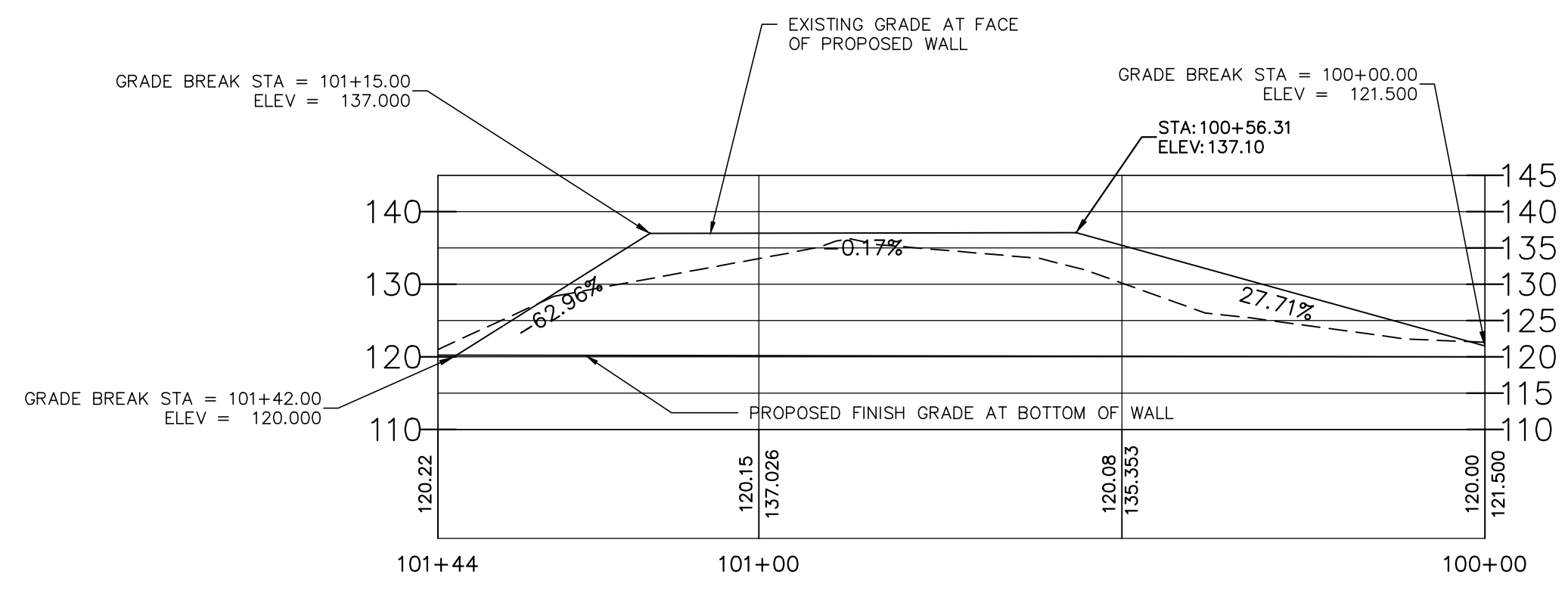


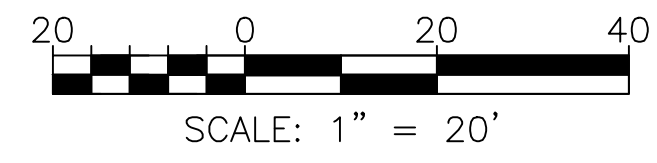
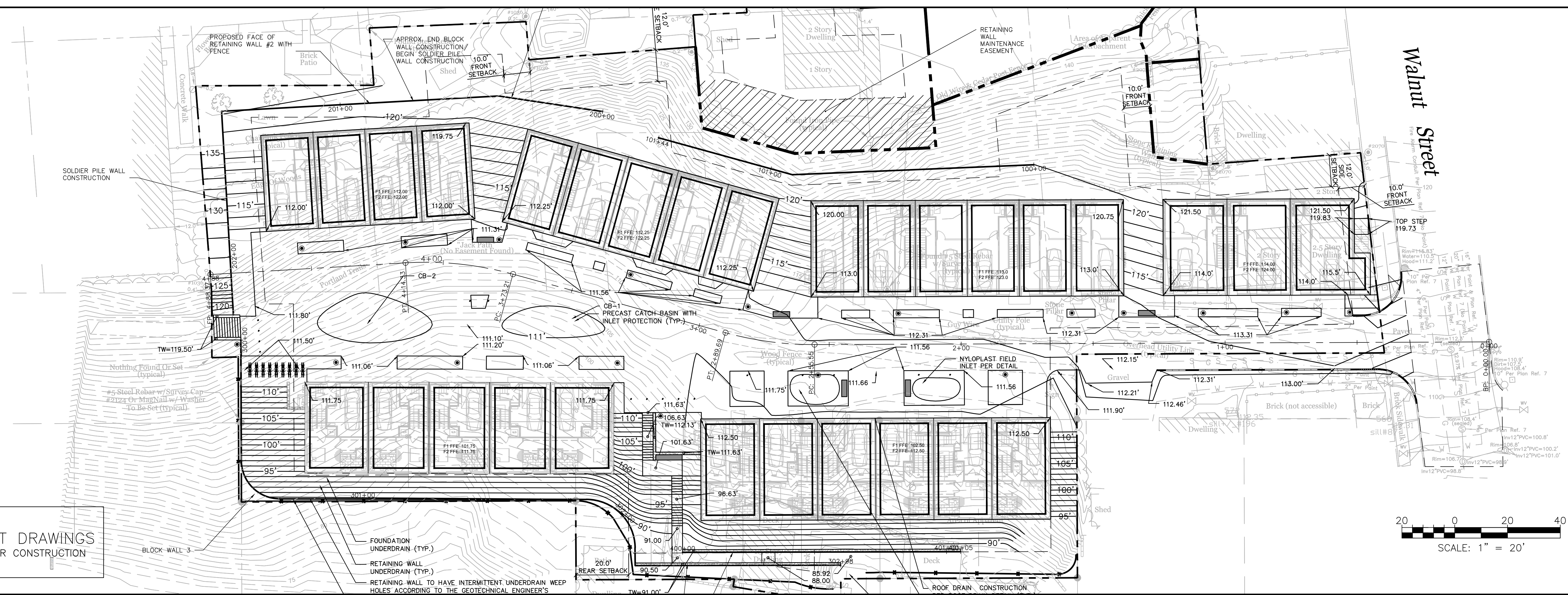
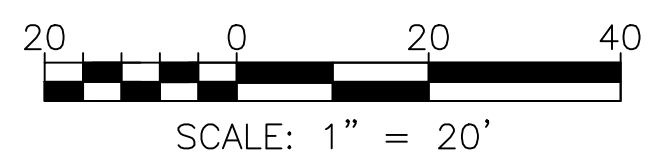
NOTES:  
 1. SUMMIT GEOENGINEERING SERVICES IN COORDINATION WITH STRUCTURAL INTEGRITY CONSULTING ENGINEERS, INC. SHALL PROVIDE THE RETAINING WALL DESIGN, GLOBAL STABILITY ANALYSIS, AND THE DESIGN OF THE TEMPORARY SOIL RESTRAINT MEASURES, AS REQUIRED.



FACE OF WALL 2



FACE OF WALL 1



PERMIT DRAWINGS  
 NOT FOR CONSTRUCTION

| ISSUED FOR       | DATE     | BY  |
|------------------|----------|-----|
| CITY SUBMISSION  | 9/23/13  | WHS |
| WORKSHOP #2      | 11/12/13 | WHS |
| FINAL SUBMISSION | 12/22/13 | WHS |
| MAINE DEP MCGP   | 12/16/13 | WHS |

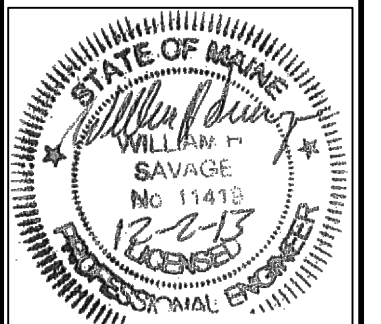
| REVISION       | REV. DATE | BY  |
|----------------|-----------|-----|
| STAFF COMMENTS | 12/16/13  | WHS |

DRAWING NAME: WALL 1 & 2 PROFILE PLAN  
 PROJECT NAME: MUNJOY HEIGHTS  
 CLIENT: REDFERN MUNJOY, LLC.  
 P.O. BOX 8816, PORTLAND, MAINE 04104

ACORN ENGINEERING, INC. ENGINEERING INC.  
 P.O. BOX 3302 PORTLAND, MAINE 04104  
 (207) 775-2655

THIS PLAN SHALL NOT BE MODIFIED WITHOUT WRITTEN PERMISSION FROM ACORN ENGINEERING, INC. ANY CHANGES SHALL BE AT THE CLIENT'S RISK AND WITHOUT LIABILITY TO ACORN ENGINEERING, INC.

FILE: 1047\_CIVIL  
 DATE: 9/23/13  
 JUN: 1047  
 SCALE: 1"=20'  
 DESIGN BY: WHS  
 DRAWN BY: ZRJ  
 CHECKED BY: WHS



DRAWING NO.  
**C-32**