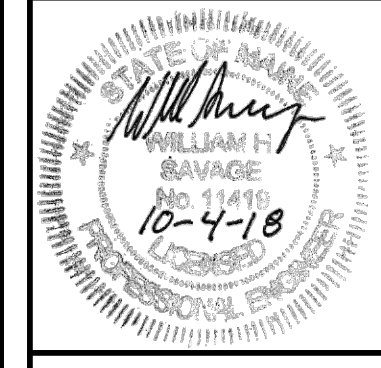


ISSUED FOR	BY
LEVEL II SITE PLAN	WHS
	10/03/18

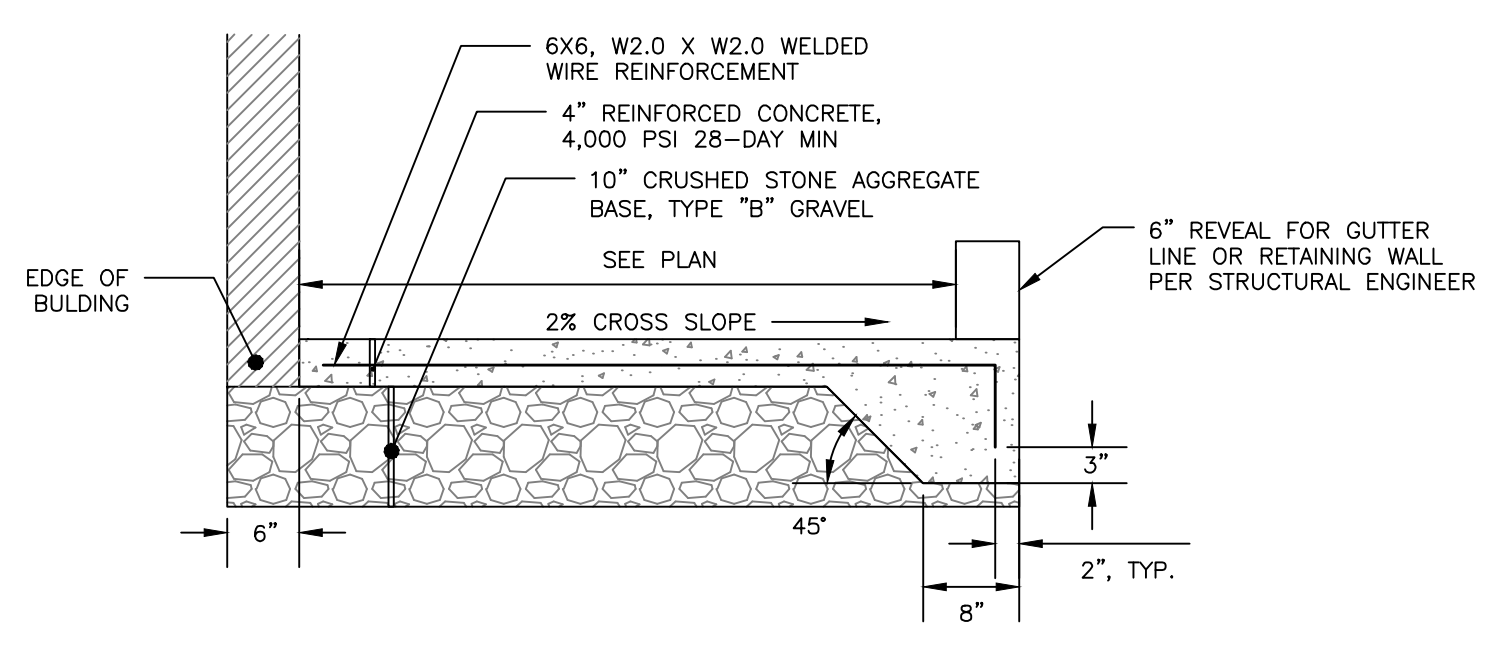
DRAWING NAME: **SITE DETAILS - 1**
 PROJECT NAME: **WASHINGTON BATHS**
 CLIENT: **AKASHA 155 LLC**
 ADDRESS: **PO BOX 11546, PORTLAND, ME 04104**

A C O R N
ENGINEERING, INC.
WE DESIGN, CONSTRUCT AND MAINTAIN HIGH QUALITY INFRASTRUCTURE PROJECTS FROM ACROSS THE STATE OF MAINE. WE ARE AN EQUAL OPPORTUNITY, AFFIRMATIVE ACTION EMPLOYER. WE ARE AN EQUAL OPPORTUNITY, AFFIRMATIVE ACTION EMPLOYER. WE ARE AN EQUAL OPPORTUNITY, AFFIRMATIVE ACTION EMPLOYER.
 158 BANGOR RD. PORTLAND, MAINE 04102
 (207) 775-2655

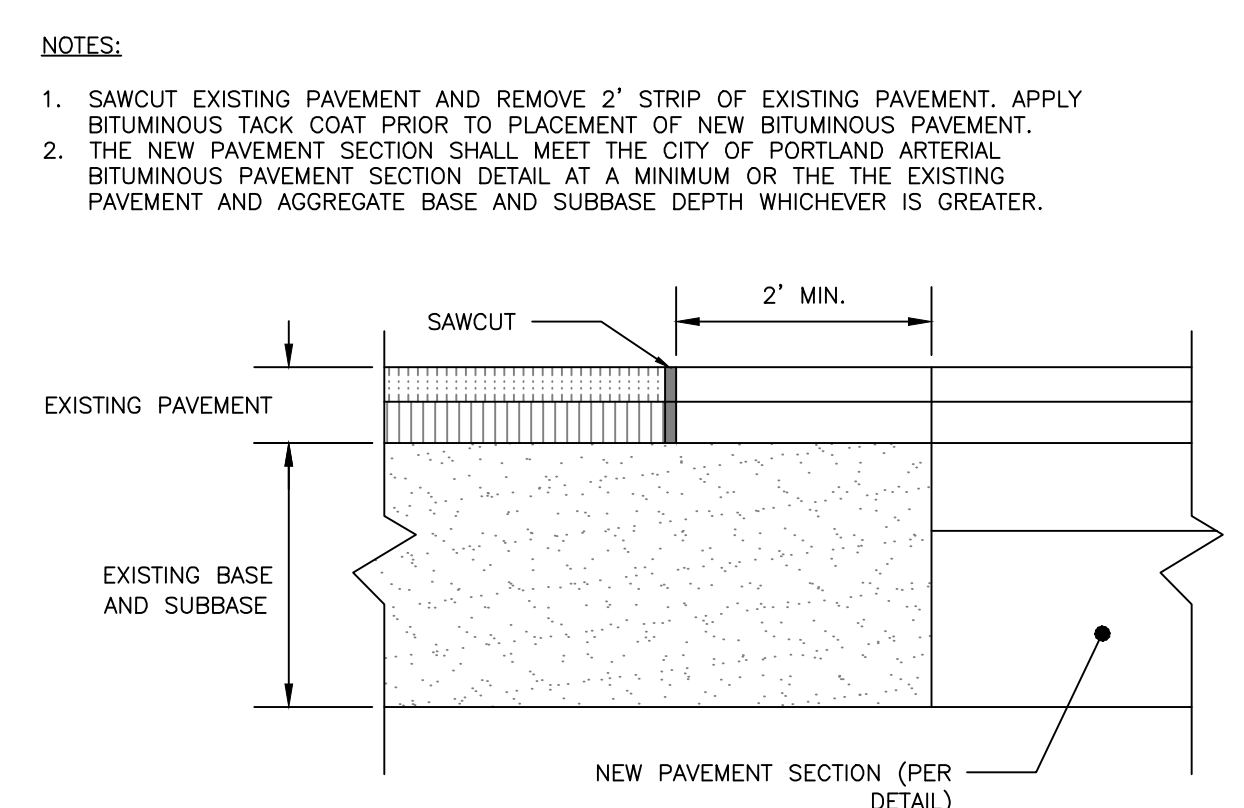
FILE:	1108_DETAILS
JN:	1108
SCALE:	NTS
DESIGNED BY:	SJL
DRAWN BY:	FRT
CHECKED BY:	WHS



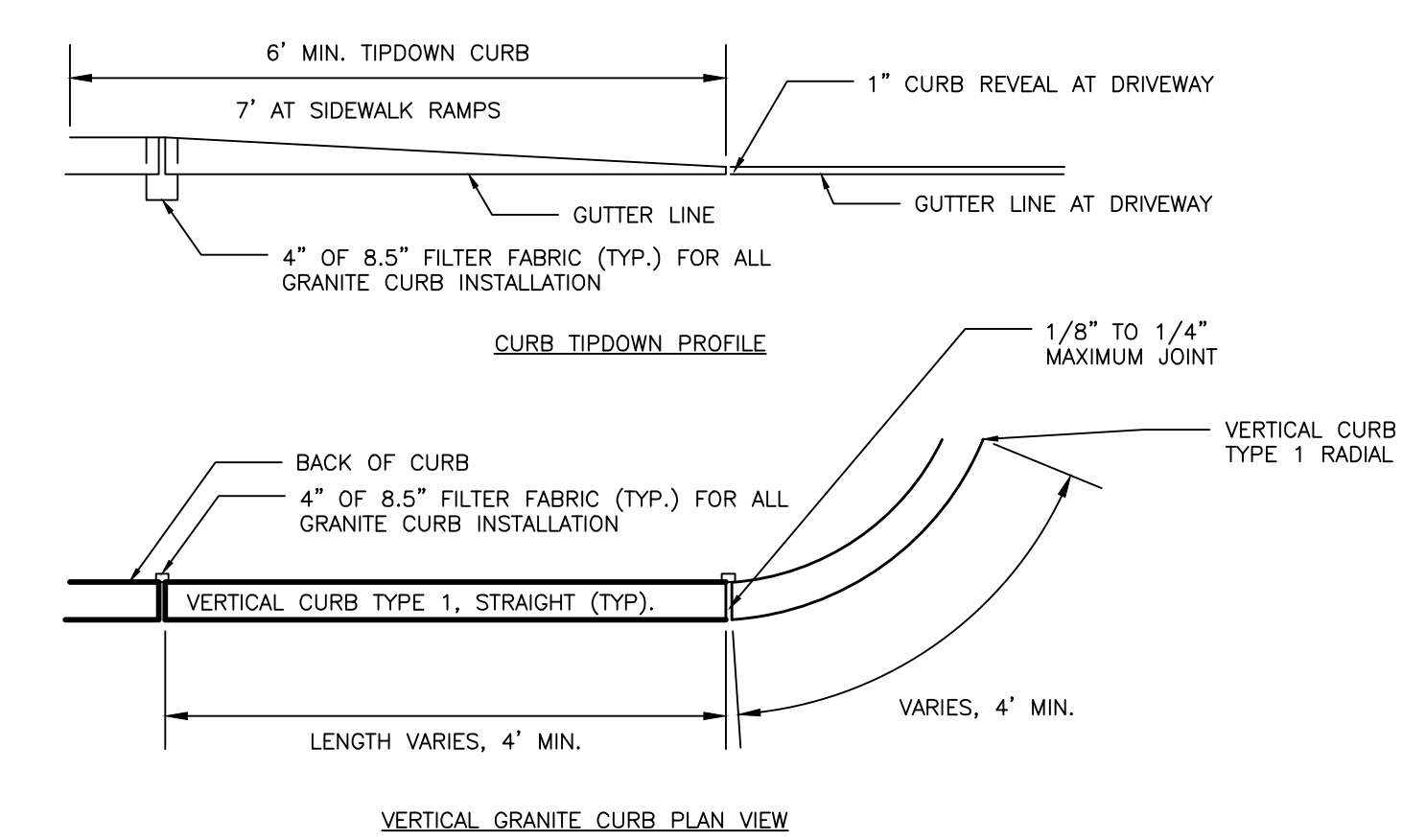
DRAWING NO. **C-40**



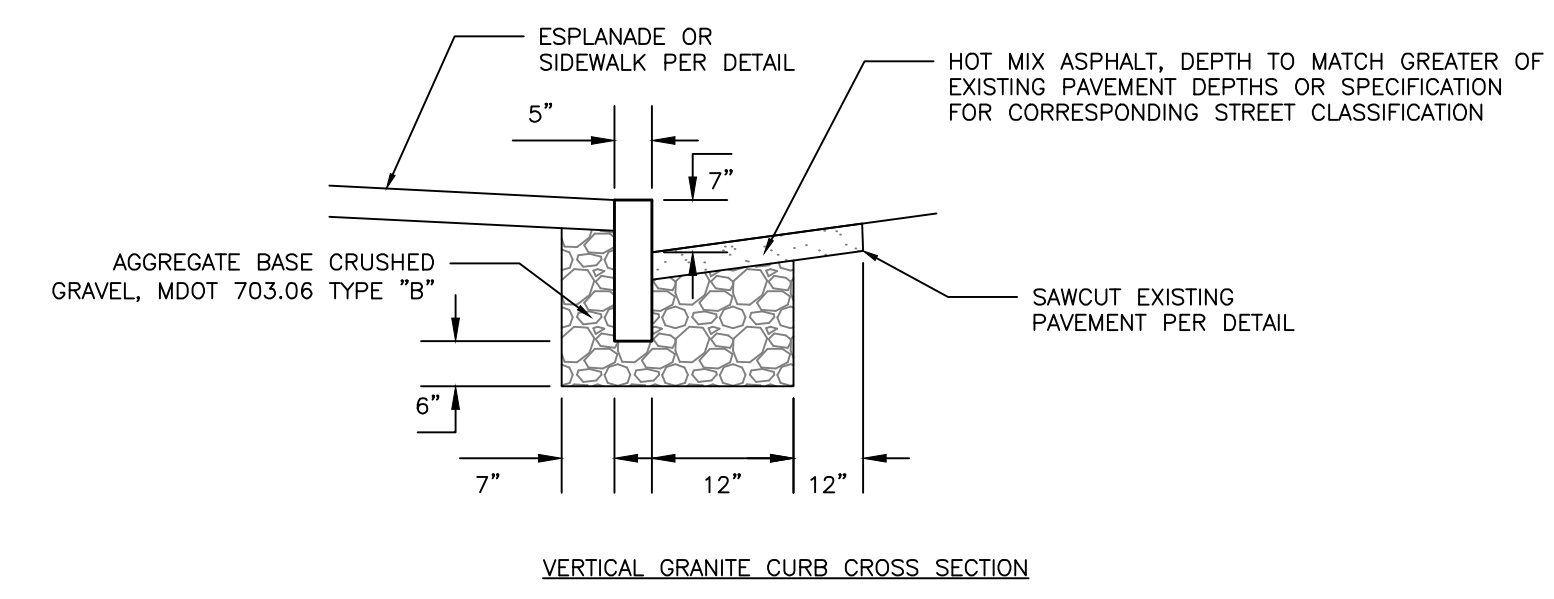
MONOLITHIC CONCRETE SIDEWALK
NOT TO SCALE



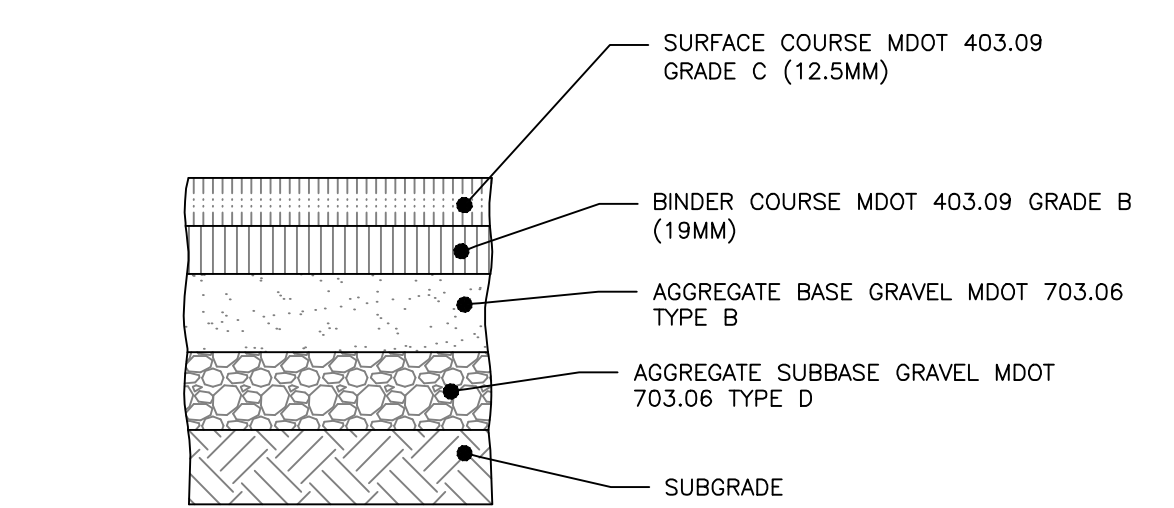
PAVEMENT SAWCUT DETAIL
NOT TO SCALE



VERTICAL GRANITE CURB AND TIPDOWN INSTALLATION
NOT TO SCALE



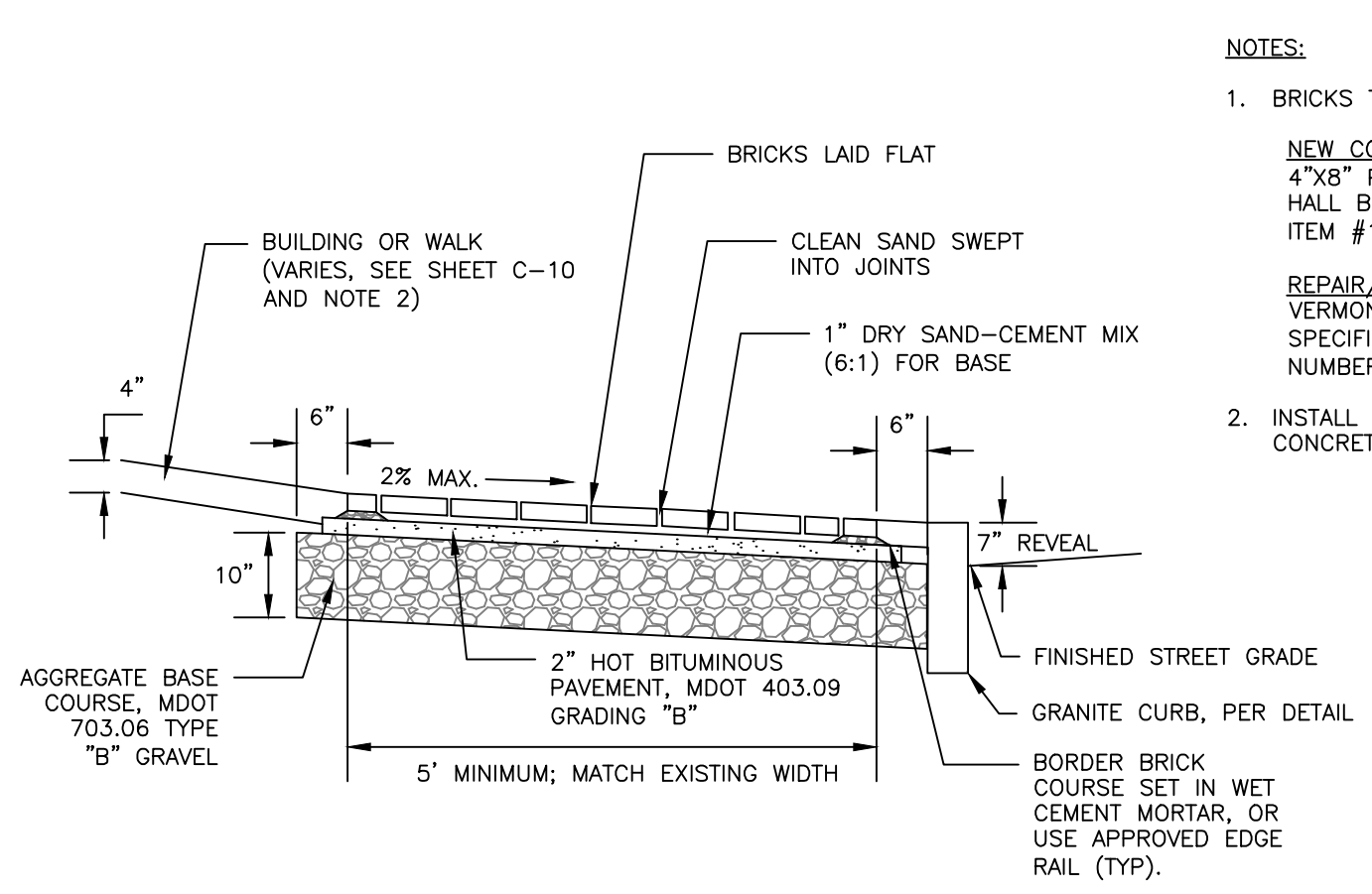
VERTICAL GRANITE CURB AND TIPDOWN INSTALLATION
NOT TO SCALE



- NOTES:**
1. COMPACT SUBGRADE TO 95% MAXIMUM DRY DENSITY IN ACCORDANCE WITH ASTM D-1557.
 2. SURFACE AND AGGREGATE MATERIALS SHALL MEET THE CITY OF PORTLAND STANDARDS IN ADDITION TO MDOT STANDARDS.

THICKNESS OF LAYERS	
STANDARD	LAYERS
2"	SURFACE COURSE MDOT 403.09 GRADE C (12.5mm)
3"	BINDER COURSE MDOT 403.09 GRADE B (19mm)
6"	AGGREGATE BASE GRAVEL MDOT 703.06 TYPE B
18"	AGGREGATE SUBBASE GRAVEL MDOT 703.06 TYPE D

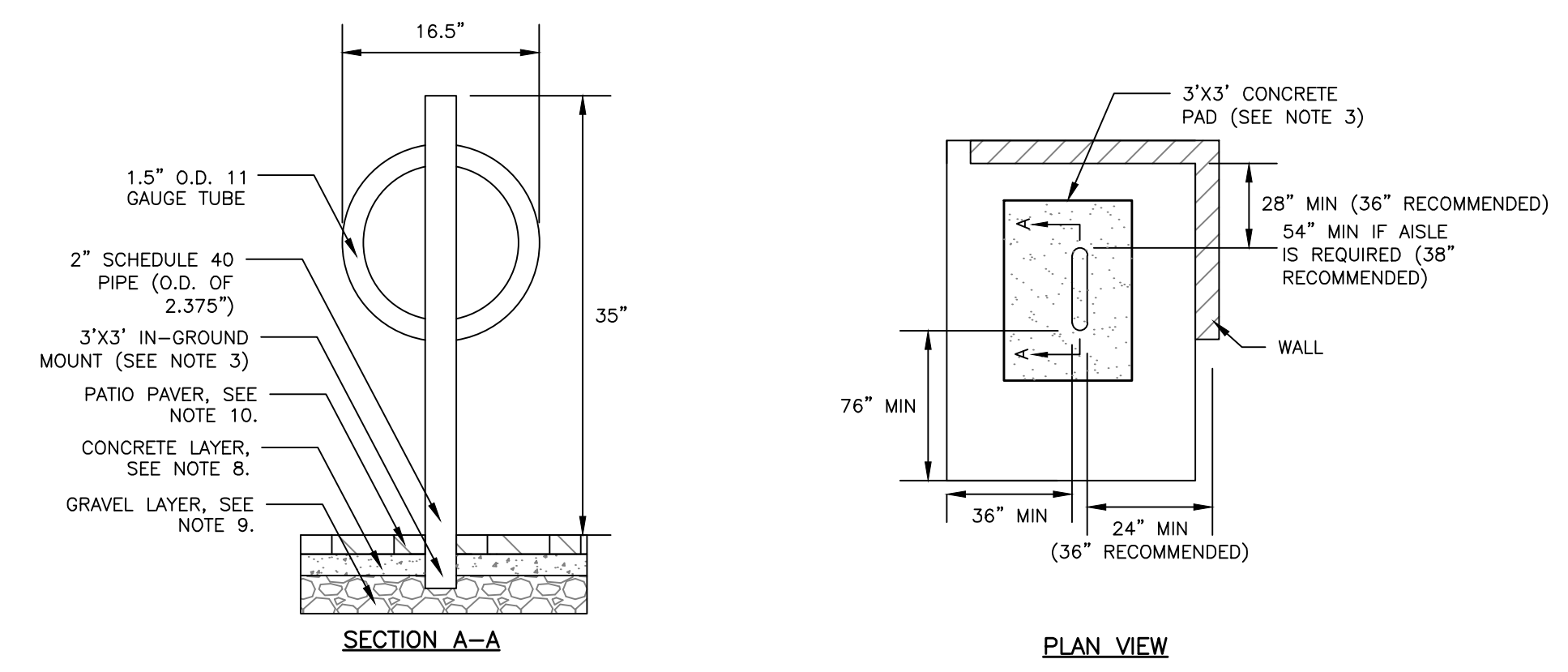
CITY OF PORTLAND ARTERIAL BITUMINOUS PAVEMENT PROFILE: WASHINGTON AVENUE
NOT TO SCALE



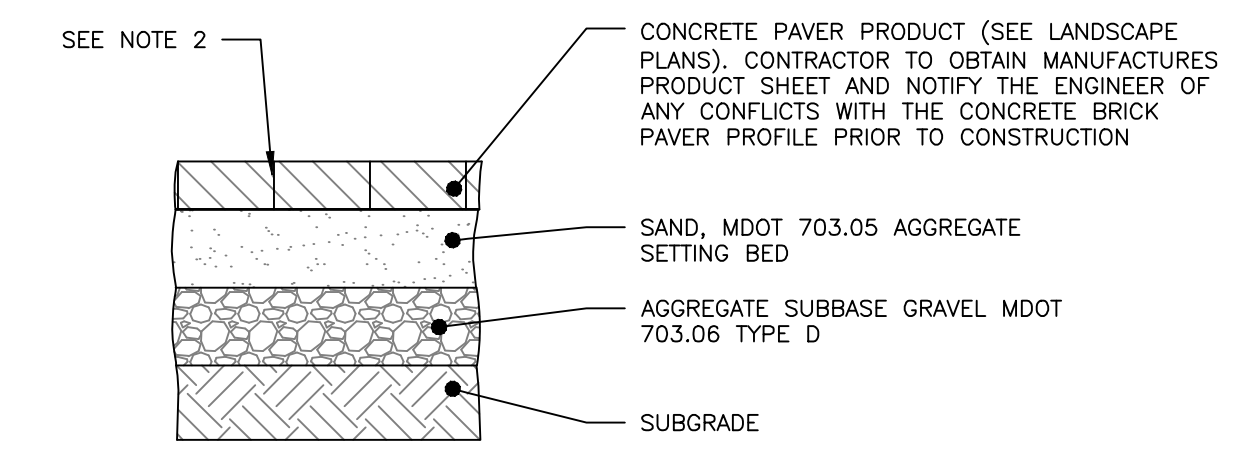
BRICK SIDEWALK WITH BITUMINOUS BASE DETAIL
NOT TO SCALE

- NOTES:**
1. BRICKS TO BE USED:
NEW CONSTRUCTION:
 4"x8" PINE HALL PATHWAY PAVER BRICK; MFG. BY PINE HALL BRICK CO., MADISON, NORTH CAROLINA. LACHANCE ITEM #193623; PINE HALL PATHWAY PAVER BRICK.
REPAIR/MAINTENANCE TO EXISTING BRICK SIDEWALKS:
 VERMONT BACKER SUPPLIED BY GAGNE AND SONS SPECIFICATION NUMBER: "VERMONT PAVER BRICK", ITEM NUMBER #VB88
 2. INSTALL BRICK FLUSH UP TO BUILDING, PAVEMENT, STAIRS, CONCRETE SURFACES, CURB OR LANDSCAPED AREAS.

- NOTES:**
1. BICYCLE RACK SHALL HAVE CAPACITY FOR TWO BICYCLES.
 2. BICYCLE RACK PARTS SHALL BE OF UNIFORM COLOR AND SHALL BE FINISHED IN ACCORDANCE WITH PRODUCT SPECIFICATION. PER CITY OF PORTLAND TECHNICAL STANDARDS ALL BICYCLE RACKS WITHIN THE RIGHT-OF-WAY SHALL MATCH THE FURNITURE COLOR FOR THAT LOCATION AS DESCRIBED IN THE MUNICIPAL LIGHTING STANDARDS; IF NO DESIGNATED COLOR FOR THAT AREA EXISTS, BICYCLE RACKS SHALL BE BLACK.
 3. BICYCLE RACK SHALL BE INSTALLED IN ACCORDANCE WITH MANUFACTURER'S MOST RECENT INSTALLATION RECOMMENDATIONS, AND SHALL BE INSTALLED WITH AN IN-GROUND MOUNT UNLESS OTHERWISE APPROVED BY ENGINEER.
 4. BICYCLE RACK SHALL BE "DERO BIKE HITCH", AS MANUFACTURED BY DERO BIKE RACKS.
 5. MINIMUM OFFSETS SHOWN, MANUFACTURER'S RECOMMENDED OFFSETS SHALL BE ENFORCED WHERE POSSIBLE.
 6. MINIMUM DISTANCE BETWEEN BICYCLE RACKS SHALL BE 24". RECOMMENDED DISTANCE BETWEEN BICYCLE RACKS SHALL BE 38".
 7. ALL OFFSETS ARE FROM OUTSIDE EDGES OF ITEMS.
 8. CONCRETE SHALL BE 4000 PSI @28 DAYS. BOTTOM OF CONCRETE SHALL BE AT TOP OF SIDEWALK GRAVEL ELEVATION. DEPTH VARIES APPROX. 4"-7".
 9. GRAVEL LAYER SHALL BE INSTALLED IN ACCORDANCE WITH BITUMINOUS BASE DETAIL, AND SHALL BE MAINTAINED 703.06 TYPE B.
 10. TOP OF PATIO PAVERS AT BIKE HITCH SHALL BE FLUSH WITH REST OF PATIO PAVER SURFACE.



BICYCLE HITCH DETAIL
NOT TO SCALE



- NOTE:**
1. COMPACT AGGREGATE MATERIALS AND SUBGRADE TO 95% MAXIMUM DRY DENSITY IN ACCORDANCE WITH ASTM D-1557
 2. INSTALL WITH ALLIANCE GATOR XP POLY SAND PER MANUFACTURER'S RECOMMENDATION. POLY SAND COLOR PER ARCHITECT.

THICKNESS OF LAYERS	
STANDARD	LAYERS
2-3/4"	CONCRETE PAVER (DEPTH TBD BASED UPON THE MANUFACTURER)
4"	AGGREGATE BASE SAND MDOT 703.05
15"	AGGREGATE SUBBASE GRAVEL MDOT 703.06 TYPE D

CONCRETE BRICK PAVER PROFILE
NOT TO SCALE

PERMIT LEVEL
NOT ISSUED FOR
CONSTRUCTION