

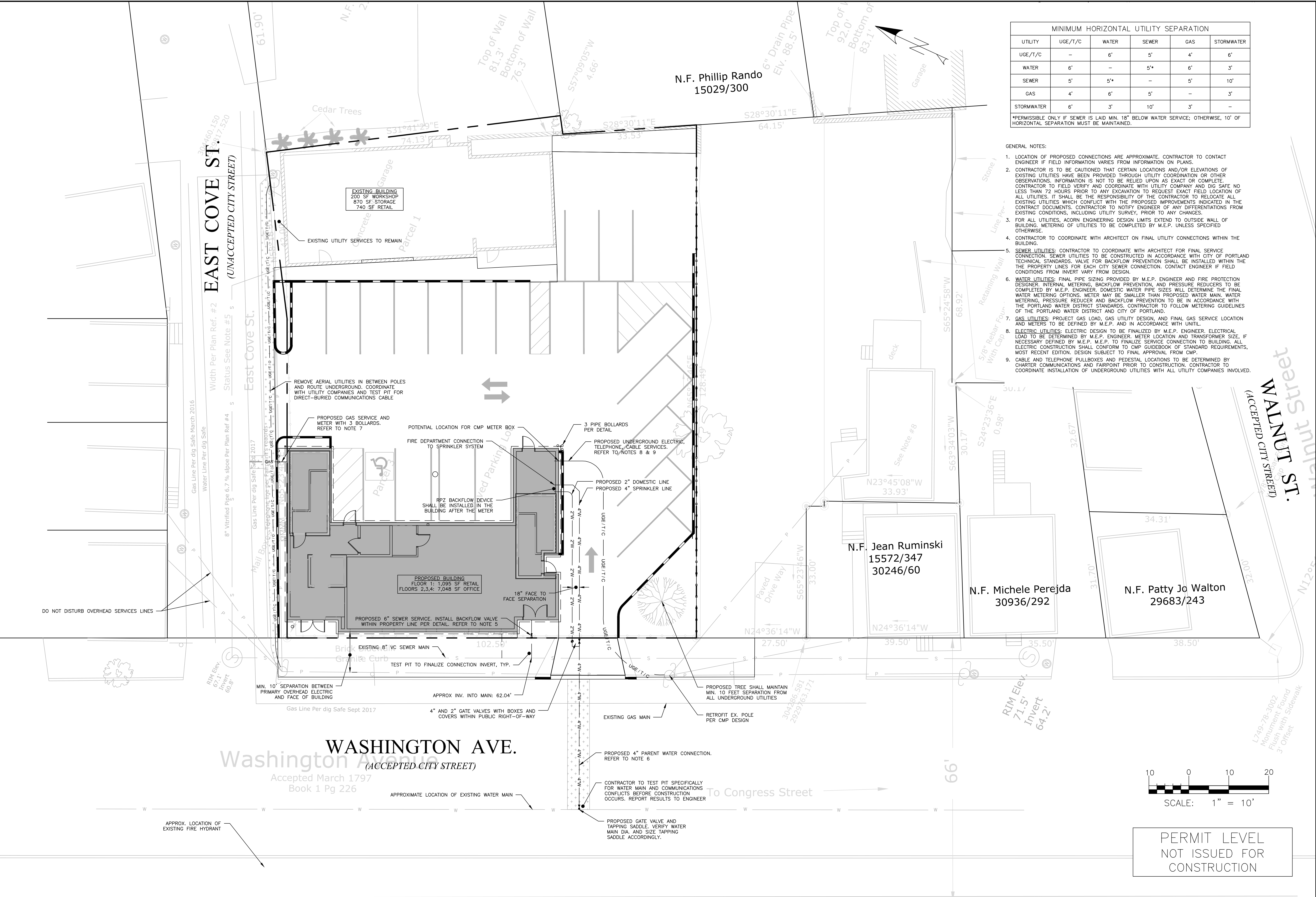
ISSUED FOR	BY
ABILITY TO SERVE	WHS
CITY APP.	WHS
	DATE
	11/27/17
	12/27/17

MINIMUM HORIZONTAL UTILITY SEPARATION					
UTILITY	UGE/T/C	WATER	SEWER	GAS	STORMWATER
UGE/T/C	-	6'	5'	4'	6'
WATER	6'	-	5*	6'	3'
SEWER	5'	5*	-	5'	10'
GAS	4'	6'	5'	-	3'
STORMWATER	6'	3'	10'	3'	-

\*PERMISSIBLE ONLY IF SEWER IS LAID MIN. 18" BELOW WATER SERVICE; OTHERWISE, 10' OF HORIZONTAL SEPARATION MUST BE MAINTAINED.

GENERAL NOTES:

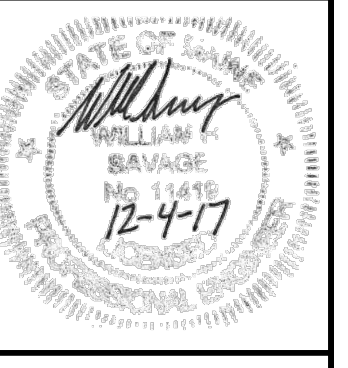
1. LOCATION OF PROPOSED CONNECTIONS ARE APPROXIMATE. CONTRACTOR TO CONTACT ENGINEER IF FIELD INFORMATION VARIES FROM INFORMATION ON PLANS.
2. CONTRACTOR IS TO BE CAUTIONED THAT CERTAIN LOCATIONS AND/OR ELEVATIONS OF EXISTING UTILITIES HAVE BEEN PROVIDED THROUGH UTILITY COORDINATION OR OTHER OBSERVATIONS. INFORMATION IS NOT TO BE RELIED UPON AS EXACT OR COMPLETE. CONTRACTOR TO FIELD VERIFY AND COORDINATE WITH UTILITY COMPANY AND DIG SAFE NO LESS THAN 72 HOURS PRIOR TO ANY EXCAVATION TO REQUEST EXACT FIELD LOCATION OF ALL UTILITIES. IT SHALL BE THE RESPONSIBILITY OF THE CONTRACTOR TO RELOCATE ALL EXISTING UTILITIES WHICH CONFLICT WITH THE PROPOSED IMPROVEMENTS INDICATED IN THE CONTRACT DOCUMENTS. CONTRACTOR TO NOTIFY ENGINEER OF ANY DIFFERENTIATIONS FROM EXISTING CONDITIONS, INCLUDING UTILITY SURVEY, PRIOR TO ANY CHANGES.
3. FOR ALL UTILITIES, ACORN ENGINEERING DESIGN LIMITS EXTEND TO OUTSIDE WALL OF BUILDING. METERING OF UTILITIES TO BE COMPLETED BY M.E.P. UNLESS SPECIFIED OTHERWISE.
4. CONTRACTOR TO COORDINATE WITH ARCHITECT ON FINAL UTILITY CONNECTIONS WITHIN THE BUILDING.
5. SEWER UTILITIES: CONTRACTOR TO COORDINATE WITH ARCHITECT FOR FINAL SERVICE CONNECTION. SEWER UTILITIES TO BE CONSTRUCTED IN ACCORDANCE WITH CITY OF PORTLAND TECHNICAL STANDARDS. VALVE FOR BACKFLOW PREVENTION SHALL BE INSTALLED WITHIN THE PROPERTY LINES FOR EACH CITY SEWER CONNECTION. CONTACT ENGINEER IF FIELD CONDITIONS FROM INVERT VARY FROM DESIGN.
6. WATER UTILITIES: FINAL PIPE SIZING PROVIDED BY M.E.P. ENGINEER AND FIRE PROTECTION DESIGNER. INTERNAL METERING, BACKFLOW PREVENTION, AND PRESSURE REDUCERS TO BE COMPLETED BY M.E.P. ENGINEER. DOMESTIC WATER PIPE SIZES WILL DETERMINE THE FINAL WATER METERING OPTIONS. METER MAY BE SMALLER THAN PROPOSED WATER MAIN. WATER METERING, PRESSURE REDUCER AND BACKFLOW PREVENTION TO BE IN ACCORDANCE WITH THE PORTLAND WATER DISTRICT STANDARDS. CONTRACTOR TO FOLLOW METERING GUIDELINES OF THE PORTLAND WATER DISTRICT AND CITY OF PORTLAND.
7. GAS UTILITIES: PROJECT GAS LOAD, GAS UTILITY DESIGN, AND FINAL GAS SERVICE LOCATION AND METERS TO BE DEFINED BY M.E.P. AND IN ACCORDANCE WITH UNTIL.
8. ELECTRIC UTILITIES: ELECTRIC DESIGN TO BE FINALIZED BY M.E.P. ENGINEER. ELECTRICAL LOAD TO BE DETERMINED BY M.E.P. ENGINEER. METER LOCATION AND TRANSFORMER SIZE, IF NECESSARY DEFINED BY M.E.P. M.E.P. TO FINALIZE SERVICE CONNECTION TO BUILDING. ALL ELECTRIC CONSTRUCTION SHALL CONFORM TO CMP GUIDEBOOK OF STANDARD REQUIREMENTS, MOST RECENT EDITION. DESIGN SUBJECT TO FINAL APPROVAL FROM CMP.
9. CABLE AND TELEPHONE PULLBOXES AND PEDESTAL LOCATIONS TO BE DETERMINED BY CHARTER COMMUNICATIONS AND FAIRPOINT PRIOR TO CONSTRUCTION. CONTRACTOR TO COORDINATE INSTALLATION OF UNDERGROUND UTILITIES WITH ALL UTILITY COMPANIES INVOLVED.



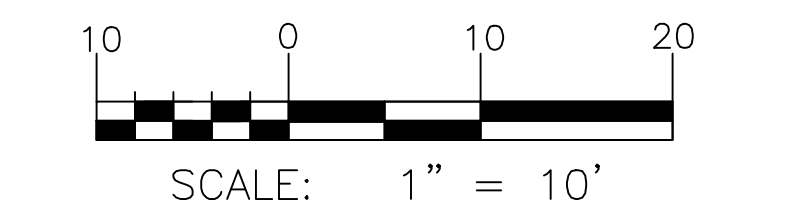
UTILITY PLAN  
 PROJECT NAME: 151 WASHINGTON AVE. REDEVELOPMENT  
 CLIENT: DIVING ROCK, LLC  
 15 HOWARD STREET, PORTLAND, ME 04101

ACORN ENGINEERING, INC.  
 ENGINEERING, INC.  
 158 BANGOR ST. PORTLAND, MAINE 04102  
 (207) 775-2655

FILE: 1090\_CIVIL  
 JN: 1090  
 SCALE: 1" = 10'  
 DESIGNED BY: SJL  
 DRAWN BY: SJL  
 CHECKED BY: WHS



DRAWING NO. C-20



PERMIT LEVEL  
 NOT ISSUED FOR  
 CONSTRUCTION