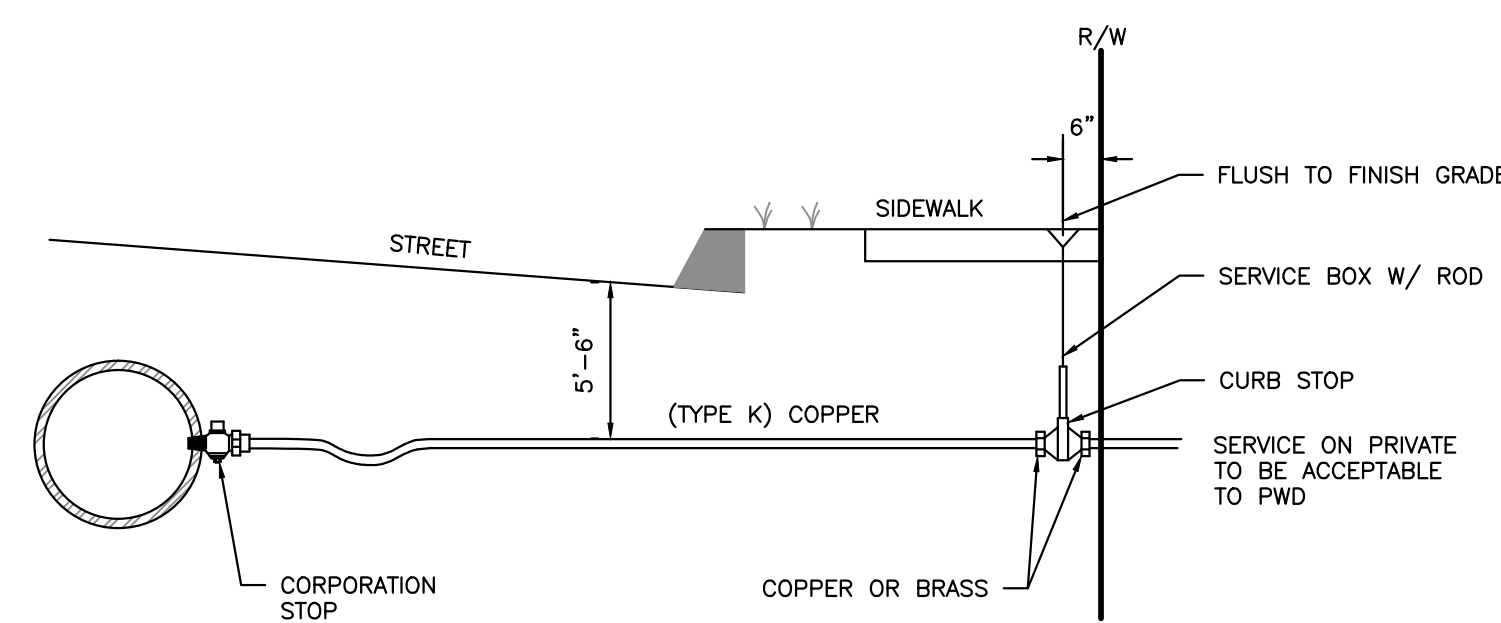
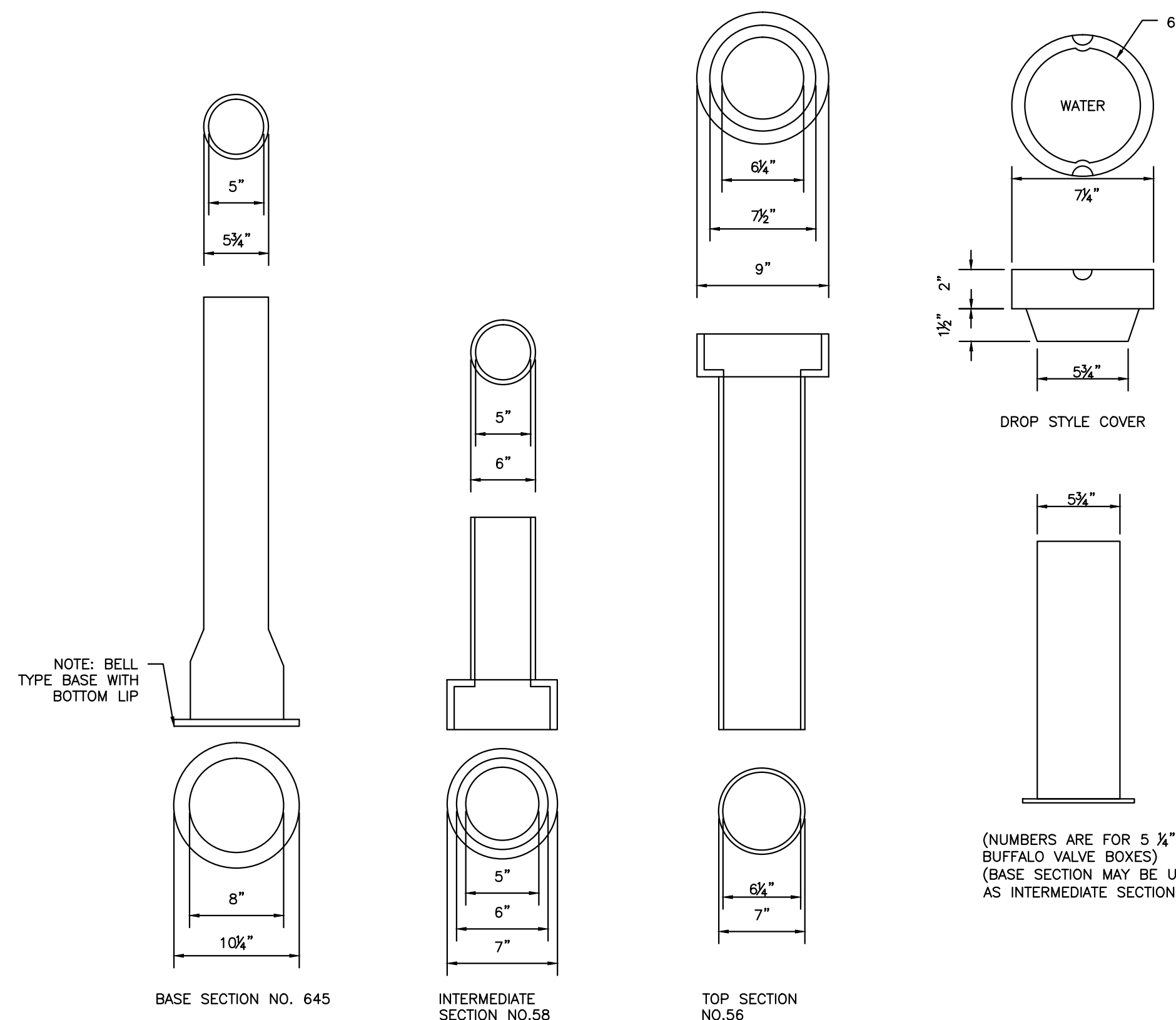


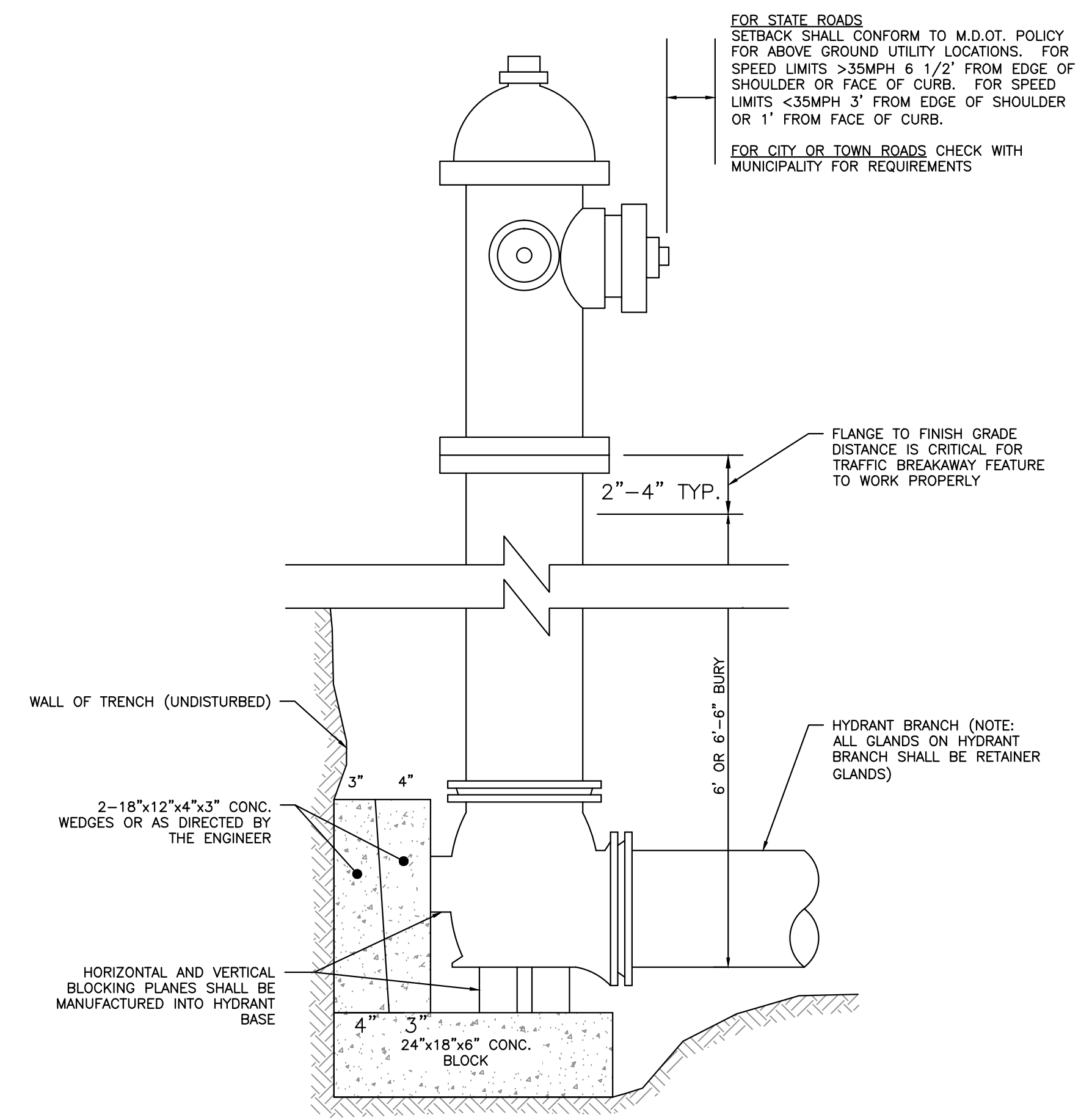
**SERVICE TAP**  
(3/4" AND 1" C.C. THREAD)



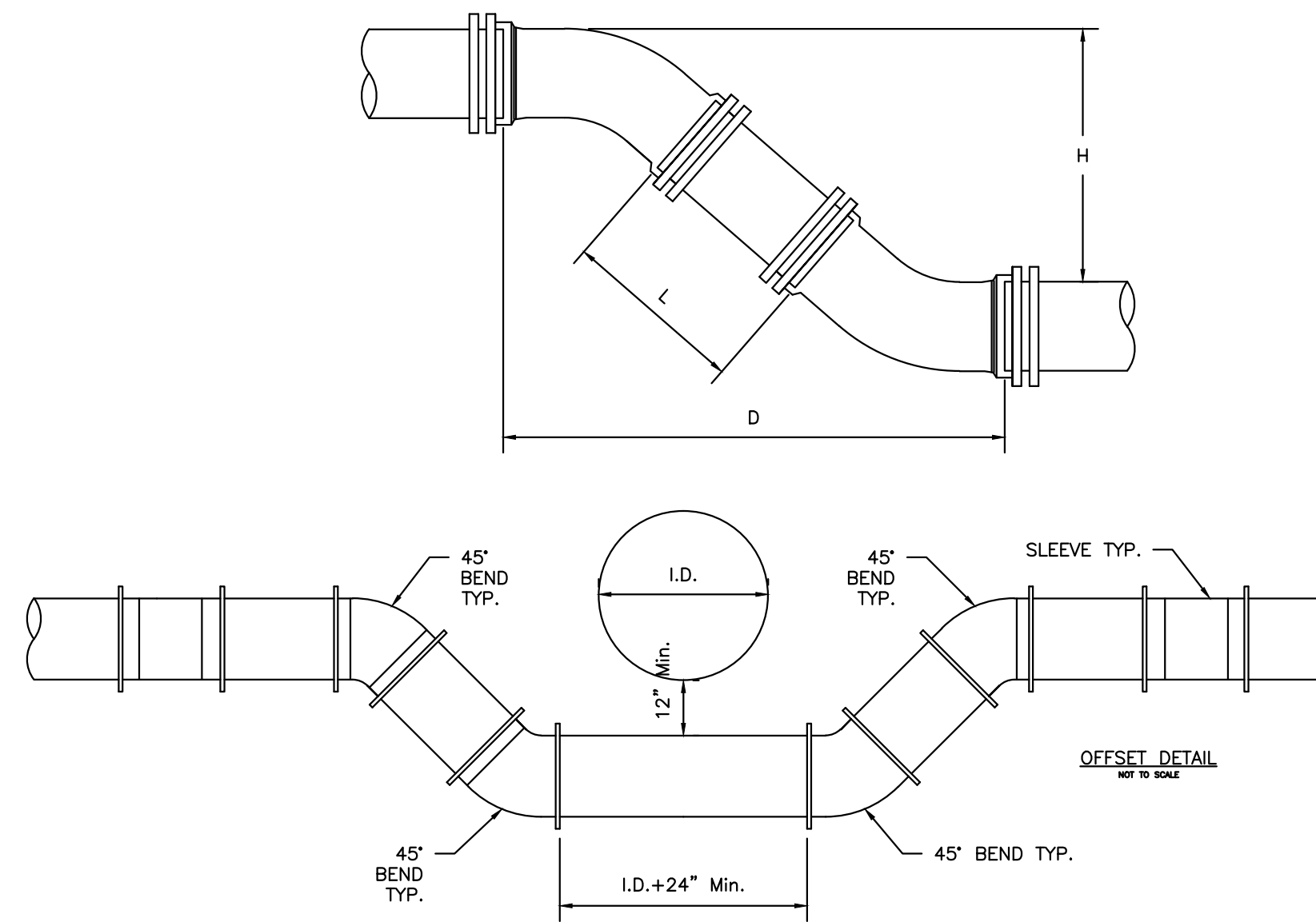
**TYPICAL SERVICE CONNECTION**  
N.T.S.



**VALVE BOX & COVER**  
N.T.S.



**TYPICAL HYDRANT INSTALLATION DETAIL**



NOTE: DIMENSIONS APPLICABLE FOR SIGMA COMPACT BENDS. FOR TYLER COMPACT BENDS, ADD 1/2" TO "D" DIMENSION AND SUBTRACT 1/2" FROM "L" DIMENSION. FOR OTHER FITTINGS REFER TO MANUFACTURER'S RECOMMENDATIONS.

H	6" PIPE		8" PIPE		12" PIPE	
	D	L	D	L	D	L
12'	1' 6-1/2"	0' 10-1/2"	1' 7-1/2"	0' 9-1/2"	1' 11-1/2"	0' 5-1/2"
13'	1' 7-1/2"	0' 11-7/8"	1' 8-1/2"	0' 10-7/8"	2' 0-1/2"	0' 6-7/8"
14'	1' 8-1/2"	1' 1-5/16"	1' 9-1/2"	1' 0-5/16"	2' 1-1/2"	0' 8-5/16"
15'	1' 9-1/2"	1' 2-1/16"	1' 10-1/2"	1' 1-11/16"	2' 2-1/2"	0' 9-11/16"
16'	1' 10-1/2"	1' 4-1/8"	1' 11-1/2"	1' 3-1/8"	2' 3-1/2"	0' 11-1/8"
17'	1' 11-1/2"	1' 5-9/16"	2' 0-1/2"	1' 4-9/16"	2' 4-1/2"	1' 0-9/16"
18'	2' 0-1/2"	1' 6-15/16"	2' 1-1/2"	1' 5-15/16"	2' 5-1/2"	1' 1-15/16"
19'	2' 1-1/2"	1' 8-3/8"	2' 2-1/2"	1' 7-3/8"	2' 6-1/2"	1' 3-3/8"
20'	2' 2-1/2"	1' 9-13/16"	2' 3-1/2"	1' 8-13/16"	2' 7-1/2"	1' 4-13/16"
21'	2' 3-1/2"	1' 11-3/16"	2' 4-1/2"	1' 10-3/16"	2' 8-1/2"	1' 6-3/16"
22'	2' 4-1/2"	2' 0-5/8"	2' 5-1/2"	1' 11-5/8"	2' 9-1/2"	1' 7-5/8"
23'	2' 5-1/2"	2' 2"	2' 6-1/2"	2' 1"	2' 10-1/2"	1' 9"
24'	2' 6-1/2"	2' 3-7/8"	2' 7-1/2"	2' 2-7/8"	2' 11-1/2"	1' 10-7/16"
25'	2' 7-1/2"	2' 4-7/8"	2' 8-1/2"	2' 3-7/8"	3' 0-1/2"	1' 11-7/8"
26'	2' 8-1/2"	2' 6-1/4"	2' 9-1/2"	2' 5-1/4"	3' 1-1/2"	2' 1-1/4"
27'	2' 9-1/2"	2' 7-11/16"	2' 10-1/2"	2' 6-11/16"	3' 2-1/2"	2' 2-11/16"
28'	2' 10-1/2"	2' 9-1/8"	2' 11-1/2"	2' 8-1/8"	3' 3-1/2"	2' 4-1/8"
29'	2' 11-1/2"	2' 10-1/2"	3' 0-1/2"	2' 9-1/2"	3' 4-1/2"	2' 5-1/2"
30'	3' 0-1/2"	2' 11-15/16"	3' 1-1/2"	2' 10-15/16"	3' 5-1/2"	2' 6-15/16"
31'	3' 1-1/2"	3' 1-5/16"	3' 2-1/2"	3' 0-5/16"	3' 6-1/2"	2' 8-5/16"
32'	3' 2-1/2"	3' 2-3/4"	3' 3-1/2"	3' 1-3/4"	3' 7-1/2"	2' 9-3/4"
33'	3' 3-1/2"	3' 4-3/16"	3' 4-1/2"	3' 3-3/16"	3' 8-1/2"	2' 11-3/16"
34'	3' 4-1/2"	3' 5-9/16"	3' 5-1/2"	3' 4-9/16"	3' 9-1/2"	3' 0-9/16"
35'	3' 5-1/2"	3' 5-3/8"	3' 6-1/2"	3' 5-3/8"	3' 10-1/2"	3' 2"
36'	3' 6-1/2"	3' 8-7/16"	3' 7-1/2"	3' 7-9/16"	3' 11-1/2"	3' 3-7/16"
37'	3' 7-1/2"	3' 9-13/16"	3' 8-1/2"	3' 8-13/16"	4' 0-1/2"	3' 4-13/16"
38'	3' 8-1/2"	3' 11-1/4"	3' 9-1/2"	3' 10-1/4"	4' 1-1/2"	3' 6-1/4"
39'	3' 9-1/2"	4' 0-11/16"	3' 10-1/2"	3' 10-11/16"	4' 2-1/2"	3' 7-11/16"
40'	3' 10-1/2"	4' 2-1/16"	3' 11-1/2"	4' 1-1/16"	4' 3-1/2"	3' 9-1/16"
41'	3' 11-1/2"	4' 3-1/2"	4' 0-1/2"	4' 2-1/2"	4' 4-1/2"	3' 10-1/2"
42'	4' 0-1/2"	4' 4-7/8"	4' 1-1/2"	4' 3-7/8"	4' 5-1/2"	3' 11-7/8"
43'	4' 1-1/2"	4' 5-5/8"	4' 2-1/2"	4' 5-5/8"	4' 6-1/2"	4' 1-5/8"
44'	4' 2-1/2"	4' 7-3/8"	4' 3-1/2"	4' 6-3/8"	4' 7-1/2"	4' 2-3/4"
45'	4' 3-1/2"	4' 9-1/8"	4' 4-1/2"	4' 8-1/8"	4' 8-1/2"	4' 4-1/8"
46'	4' 4-1/2"	4' 10-9/16"	4' 5-1/2"	4' 9-9/16"	4' 9-1/2"	4' 5-9/16"
47'	4' 5-1/2"	4' 11-15/16"	4' 6-1/2"	4' 10-15/16"	4' 10-1/2"	4' 6-15/16"
48'	4' 6-1/2"	5' 1-3/8"	4' 7-1/2"	5' 0-3/8"	4' 11-1/2"	4' 8-3/8"
49'	4' 7-1/2"	5' 2-13/16"	4' 8-1/2"	5' 1-13/16"	5' 0-1/2"	4' 9-13/16"
50'	4' 8-1/2"	5' 4-3/16"	4' 9-1/2"	5' 3-3/16"	5' 1-1/2"	4' 11-3/16"
51'	4' 9-1/2"	5' 5-5/8"	4' 10-1/2"	5' 4-5/8"	5' 2-1/2"	5' 0-5/8"
52'	4' 10-1/2"	5' 7-1/8"	4' 11-1/2"	5' 6-1/8"	5' 3-1/2"	5' 2-1/8"
53'	4' 11-1/2"	5' 8-7/16"	5' 0-1/2"	5' 7-7/16"	5' 4-1/2"	5' 3-7/16"
54'	5' 0-1/2"	5' 9-7/8"	5' 1-1/2"	5' 8-7/8"	5' 5-1/2"	5' 4-7/8"
55'	5' 1-1/2"	5' 11-5/16"	5' 2-1/2"	5' 10-5/16"	5' 6-1/2"	5' 6-5/16"

**TYPICAL MAIN OFFSET**  
NOT TO SCALE

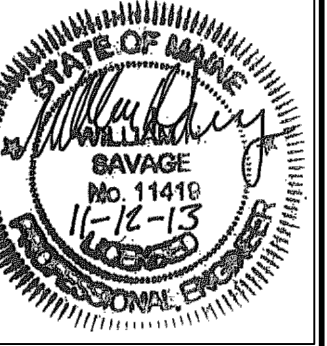
WORKSHOP SUBMISSION  
75% LEVEL DRAWINGS  
NOT FOR CONSTRUCTION

ISSUED FOR	BY
CITY SUBMISSION	DATE
	WHS
	11/12/13

REVISION	REV. DATE

DRAWING NAME: **PORTLAND WATER DISTRICT DETAILS -- 1**  
PROJECT NAME: **MUNJOY HEIGHTS**  
CLIENT: **REDFERN PROPERTIES**  
PORTLAND, MAINE

ACORN ENGINEERING, INC.  
P.O. BOX 3372 PORTLAND, MAINE 04104  
(207) 775-2655



DRAWING NO.  
**C-44**