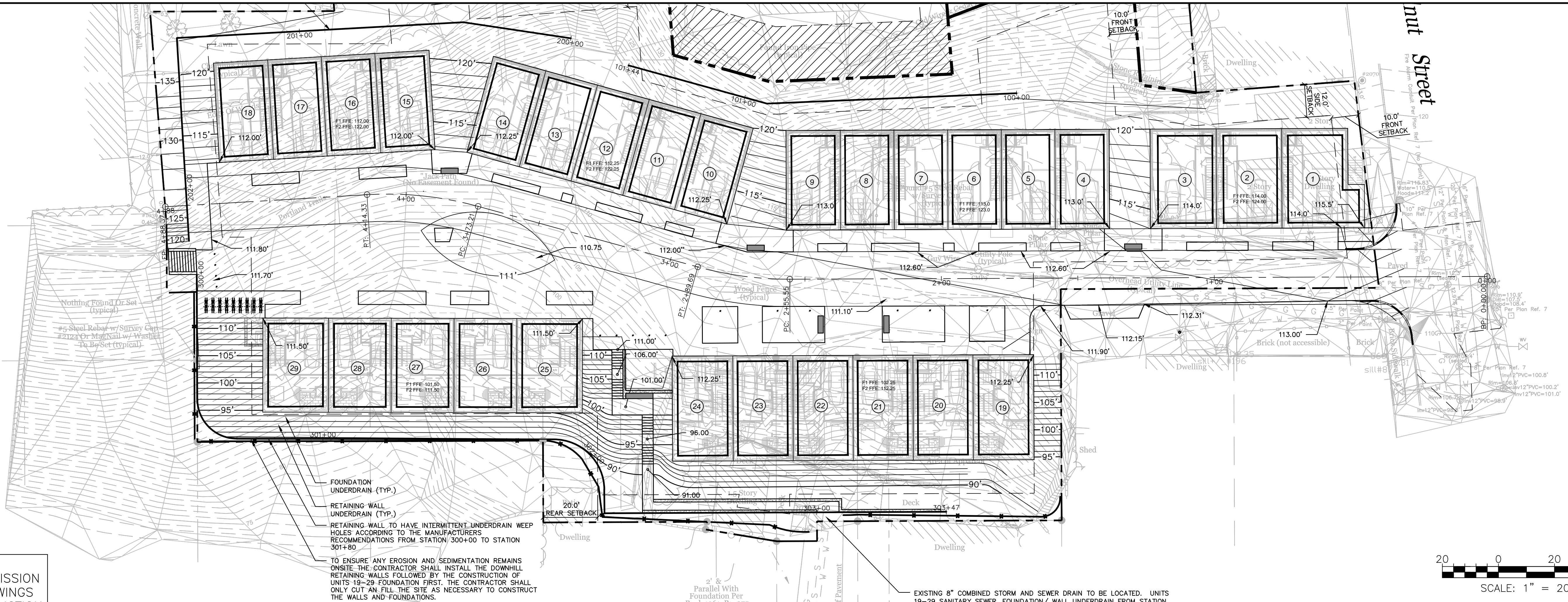
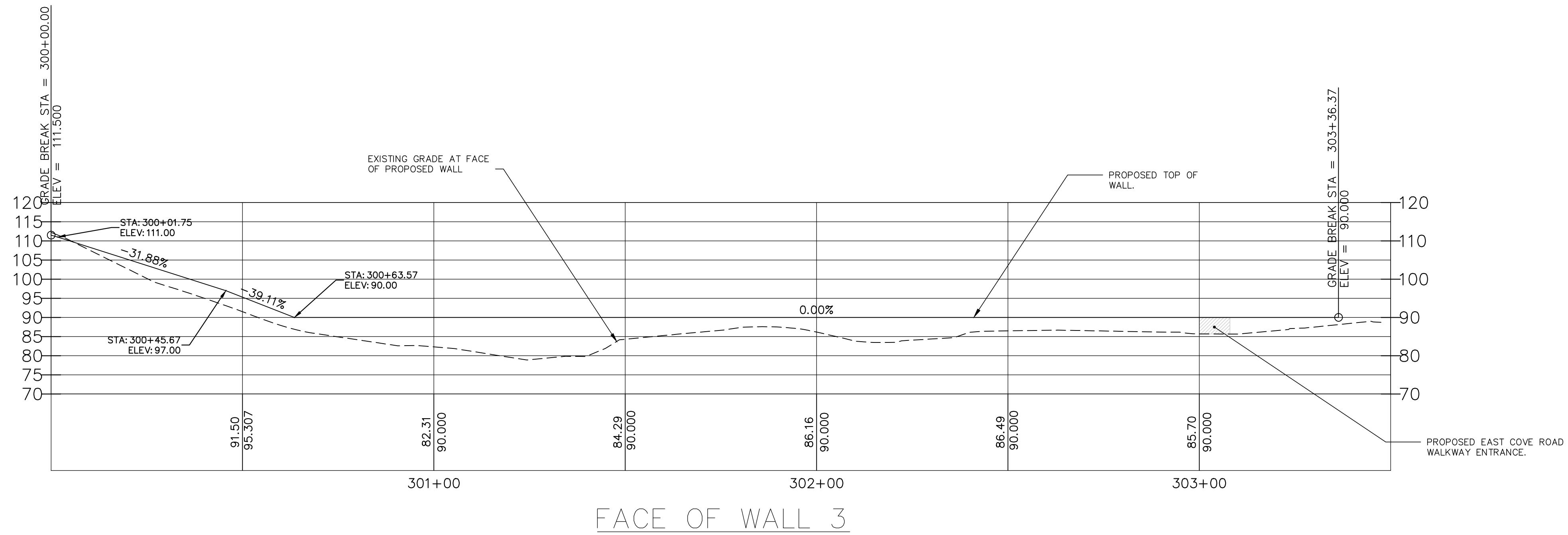


NOTES:
 1. SUMMIT GEOENGINEERING SERVICES IN COORDINATION WITH STRUCTURAL INTEGRITY CONSULTING ENGINEERS, INC. SHALL PROVIDE THE RETAINING WALL DESIGN, GLOBAL STABILITY ANALYSIS, AND THE DESIGN OF THE TEMPORARY SOIL RESTRAINT MEASURES, AS REQUIRED.



WORKSHOP SUBMISSION
 75% LEVEL DRAWINGS
 NOT FOR CONSTRUCTION

ISSUED FOR	DATE	BY
CITY SUBMISSION	9/23/13	WHS
WORKSHOP #2	11/15/13	WHS

REVISION	REV. DATE

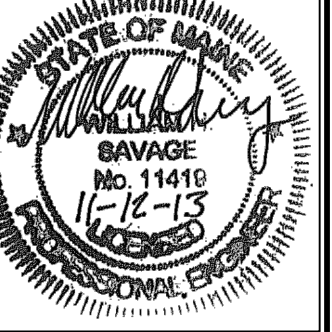
DRAWING NAME: WALL 3 PROFILE PLAN
 PROJECT NAME: MUNJOY HEIGHTS
 CLIENT: REDFERN PROPERTIES, LLC
 P.O. BOX 8816, PORTLAND, MAINE 04104

ACORN ENGINEERING, INC.
 333 PLAZA DRIVE, PORTLAND, MAINE 04104
 P.O. BOX 3333, PORTLAND, MAINE 04104
 (207) 775-2655

ACORN ENGINEERING, INC. ENGINEERING, INC.

STATE OF MAINE
 REGISTERED PROFESSIONAL ENGINEER
 No. 11416
 11-12-13

FILE:	1047_CIVIL
DATE:	9/23/13
JN:	1047
SCALE:	1"=20'
DESIGN BY:	WHS
DRAWN BY:	ZRJ
CHECKED BY:	WHS



DRAWING NO.
C-33