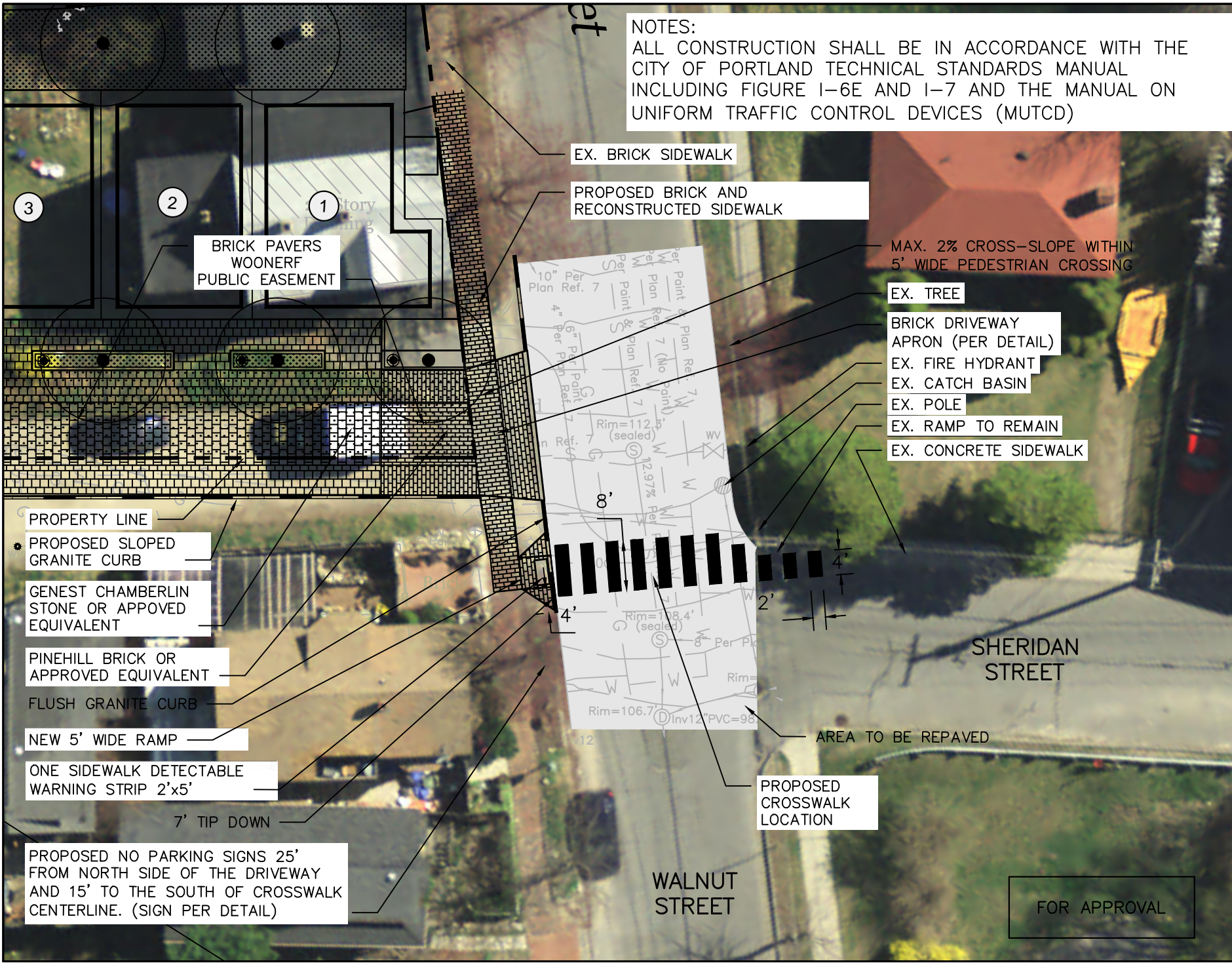


NOTES:
 ALL CONSTRUCTION SHALL BE IN ACCORDANCE WITH THE CITY OF PORTLAND TECHNICAL STANDARDS MANUAL INCLUDING FIGURE I-6E AND I-7 AND THE MANUAL ON UNIFORM TRAFFIC CONTROL DEVICES (MUTCD)



EX. BRICK SIDEWALK

PROPOSED BRICK AND RECONSTRUCTED SIDEWALK

BRICK PAVERS
 WOONERF
 PUBLIC EASEMENT

MAX. 2% CROSS-SLOPE WITHIN
 5' WIDE PEDESTRIAN CROSSING

EX. TREE

BRICK DRIVEWAY
 APRON (PER DETAIL)

EX. FIRE HYDRANT

EX. CATCH BASIN

EX. POLE

EX. RAMP TO REMAIN

EX. CONCRETE SIDEWALK

PROPERTY LINE

PROPOSED SLOPED
 GRANITE CURB

GENEST CHAMBERLIN
 STONE OR APPROVED
 EQUIVALENT

PINEHILL BRICK OR
 APPROVED EQUIVALENT

FLUSH GRANITE CURB

NEW 5' WIDE RAMP

ONE SIDEWALK DETECTABLE
 WARNING STRIP 2'x5'

7' TIP DOWN

PROPOSED NO PARKING SIGNS 25'
 FROM NORTH SIDE OF THE DRIVEWAY
 AND 15' TO THE SOUTH OF CROSSWALK
 CENTERLINE. (SIGN PER DETAIL)

AREA TO BE REPAVED

PROPOSED
 CROSSWALK
 LOCATION

WALNUT
 STREET

SHERIDAN
 STREET

FOR APPROVAL

ISSUED FOR	CONCEPT	7/27/14
	CONCEPT 1	7/27/14
	DRAFT TO DPS	7/27/14
	PLANNING COMMENTS	7/27/14
REVISION		
DRAWING NAME:	WALNUT STREET CROSSWALK PLAN	
PROJECT NAME:	MUNJOY HEIGHTS	
CLIENT:	REDFERN MUNJOY, LLC. P.O. BOX 8816, PORTLAND, MAINE 04104	
<small>ACORR ENGINEERING, INC. 04104 P.A. REG. 3378 100 W. BROAD ST. PORTLAND, MAINE 04104 (207) 772-2000</small>		
FILE:	1047_CIVIL	
DATE:	2/17/14	
JN:	1047	
SCALE:	1"=20'	
DESIGN BY:	WHS	
DRAWN BY:	WHS	
CHECKED BY:	WHS	
DRAWING NO.	SK-1	