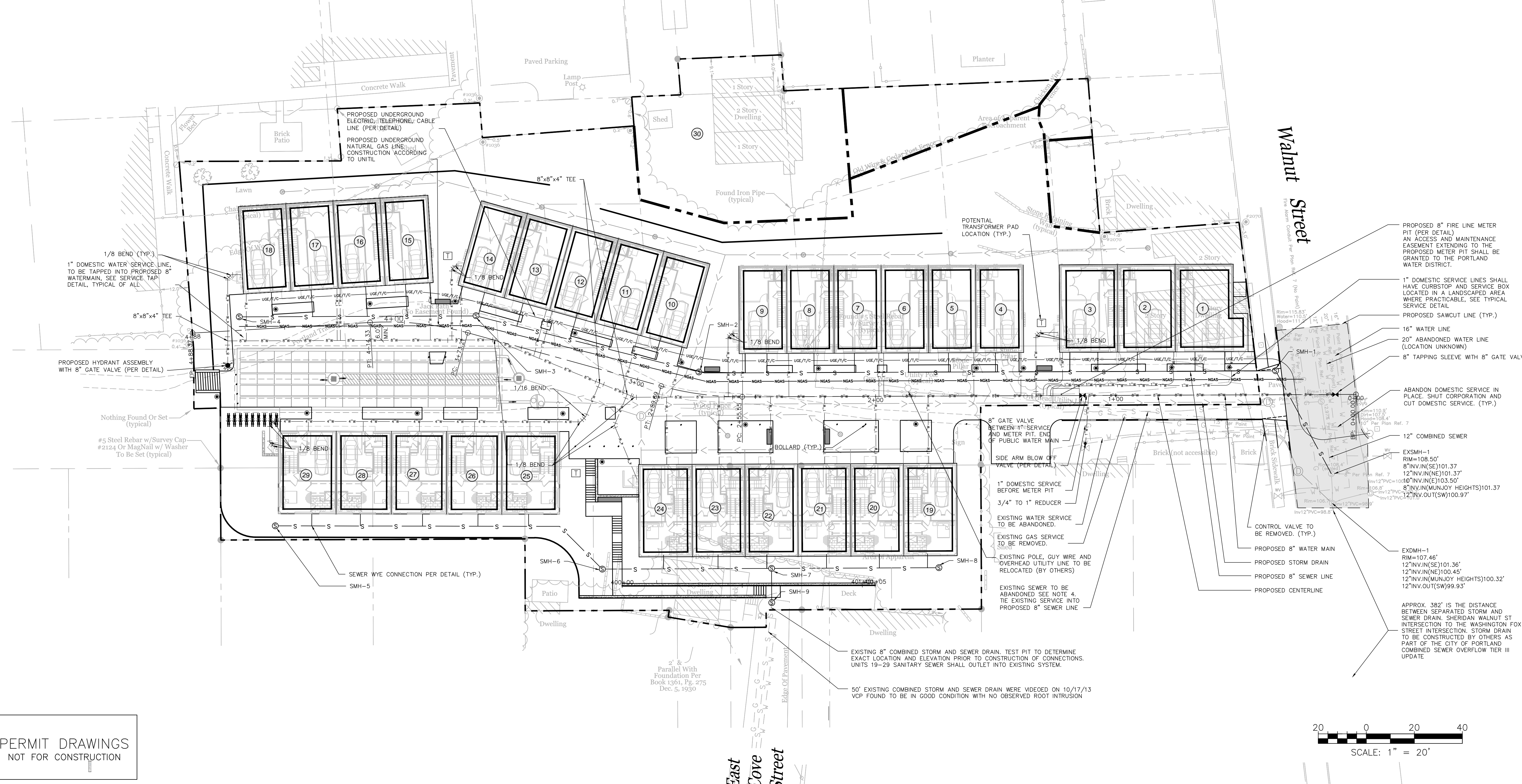


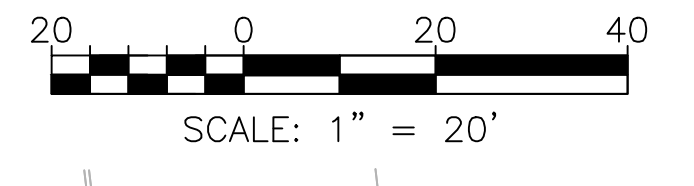
- NOTES:
- UTILITY NOTES WITHIN WALNUT STREET FROM PLAN TITLED SHERIDAN STREET SANITARY SEWER AND STREET RECONSTRUCTION BY WOODARD & CURRAN CONSULTING ENGINEERS, SHEET 5, STAMPED AS-BUILTS 6-20-89.
 - COORDINATE ALL UTILITY ENTRY POINTS WITH ARCHITECTURAL PLANS PRIOR TO START OF CONSTRUCTION.
 - THE CONDOMINIUM ASSOCIATION DOCUMENTS SHALL PROVIDE A HYDRANT MAINTENANCE AGREEMENT IN ACCORDANCE WITH CITY OF PORTLAND TECHNICAL MANUAL SECTION 3.2.3 REVISED 6/17/11.
 - PLUGGING OF ABANDONED SEWER LATERALS SHALL BE IN ACCORDANCE WITH CITY OF PORTLAND TECHNICAL MANUAL SECTION 2.6.11 REVISED 6/7/11.
 - POTENTIAL TRANSFORMER PAD LOCATIONS ARE APPROXIMATE PENDING CONFIRMATION BY CENTRAL MAINE POWER COMPANY AND FUTURE REVIEW/APPROVAL BY THE CITY.
 - IF NECESSARY, ELECTRIC AND TELEPHONE PULL BOXES LOCATIONS TO BE DETERMINED BY THE CENTRAL MAINE POWER AND VERIZON PRIOR TO CONSTRUCTION. CONTRACTOR TO COORDINATE.
 - CONTRACTOR TO COORDINATE THE RELOCATION OF THE EXISTING GUY WIRE AND UTILITY POLE WITH CENTRAL MAINE POWER COMPANY.
 - MAINTAIN MINIMUM 10' HORIZONTAL SEPARATION BETWEEN SANITARY SEWER AND WATERMAIN. DEFLECT WATER MAIN JOINT UP TO 3' TO MAINTAIN ALIGNMENT. THE CONTRACTOR MAY REDUCE THE HORIZONTAL SEPARATION TO 5', PROVIDED THE INSTALLATION MEETS THE PORTLAND WATER DISTRICT SPECIFICATION AND PROCEDURES SECTION 1: GENERAL INFORMATION, D. 2. CONTRACTOR SHALL OBTAIN APPROVAL IN WRITING FROM THE PORTLAND WATER DISTRICT PRIOR TO ANY WATER AND SEWER LINE CONSTRUCTION.
 - THE EXACT LOCATION OF THE INDIVIDUAL GAS AND UGE/T/C LOCATIONS SHALL BE PROVIDED BY WRIGHT-RYAN TO THE RESPONSIBLE CONTRACTOR.

SEWER STRUCTURE SCHEDULE				
STRUCTURE	SIZE	RIM	INV. IN	INV. OUT
EXSMH-1	EXIST.	108.50'	8" INV. IN (SE) 101.37' 12" INV. IN (NE) 101.37' 10" INV. IN (E) 103.50' 8" INV. IN (MUNJOY HEIGHTS) 101.37'	12" INV. OUT (SW) 100.97'
SMH-1	4'	113.35'	102.52'	102.42'
SMH-2	4'	112.23'	105.00'	104.90'
SMH-3	4'	111.75'	105.71'	105.61'
SMH-4	4'	112.41'	-	106.08'
SMH-5	4'	93.00'	-	87.50'
SMH-6	4'	90.00'	84.50'	84.40'
SMH-7*	4'	91.50'	8"/83.04' 8"/83.04'	TBD
SMH-8	4'	91.50'	-	84.40'
SMH-9**	4'	TBD/85.75'	TBD	TBD

* IF THE DROP IS GREATER THAN 2 FEET BETWEEN THE INVERT IN & OUT, BASED UPON THE DATA RECEIVED FROM THE TEST PIT, THEN A DROP MANHOLE SHALL BE REQUIRED. PROVIDE TEST PIT INFORMATION TO THE ENGINEER FOR VERIFICATION.
 ** INVERTS IN & OUT TO BE DETERMINED BASED UPON TEST PIT DATA.



PERMIT DRAWINGS
NOT FOR CONSTRUCTION



ISSUED FOR	DATE	BY
CITY SUBMISSION	9/23/13	WHS
WORKSHOP #2	11/12/13	WHS
FINAL SUBMISSION	12/22/13	WHS
MAINE DEP MCGP	12/16/13	WHS
CONDITIONS APPROVAL	1/7/14	WHS
REVISION	REV.	DATE
STAFF COMMENTS	WHS	12/2/13

DRAWING NAME: UTILITY PLAN
 PROJECT NAME: MUNJOY HEIGHTS
 CLIENT: REDFERN MUNJOY, LLC.
 P.O. BOX 8816, PORTLAND, MAINE 04104

ACORN ENGINEERING, INC.
 2207 775-2655
 P.O. BOX 33201 PORTLAND, ME 04104

STATE OF MAINE
 WILLIAM SAVAGE
 No. 11419
 1-17-14
 LICENSED PROFESSIONAL ENGINEER

FILE: 1047_CIVIL
 DATE: 9/23/13
 JN: 1047
 SCALE: 1"=20'
 DESIGN BY: WHS
 DRAWN BY: ZRJ
 CHECKED BY: WHS

DRAWING NO. C-20